



City of Bellevue

Ashwood Park Master Plan Update

bellevuewa.gov/ashwood-master-plan

Community Meeting #1 | April 3, 2024

AGENDA



Welcome and Introductions



Presentation

- Park Development – A Master Plan
- Ashwood Park Background
- Downtown in 30 Years
- Public Engagement
- Park Visioning



Questions

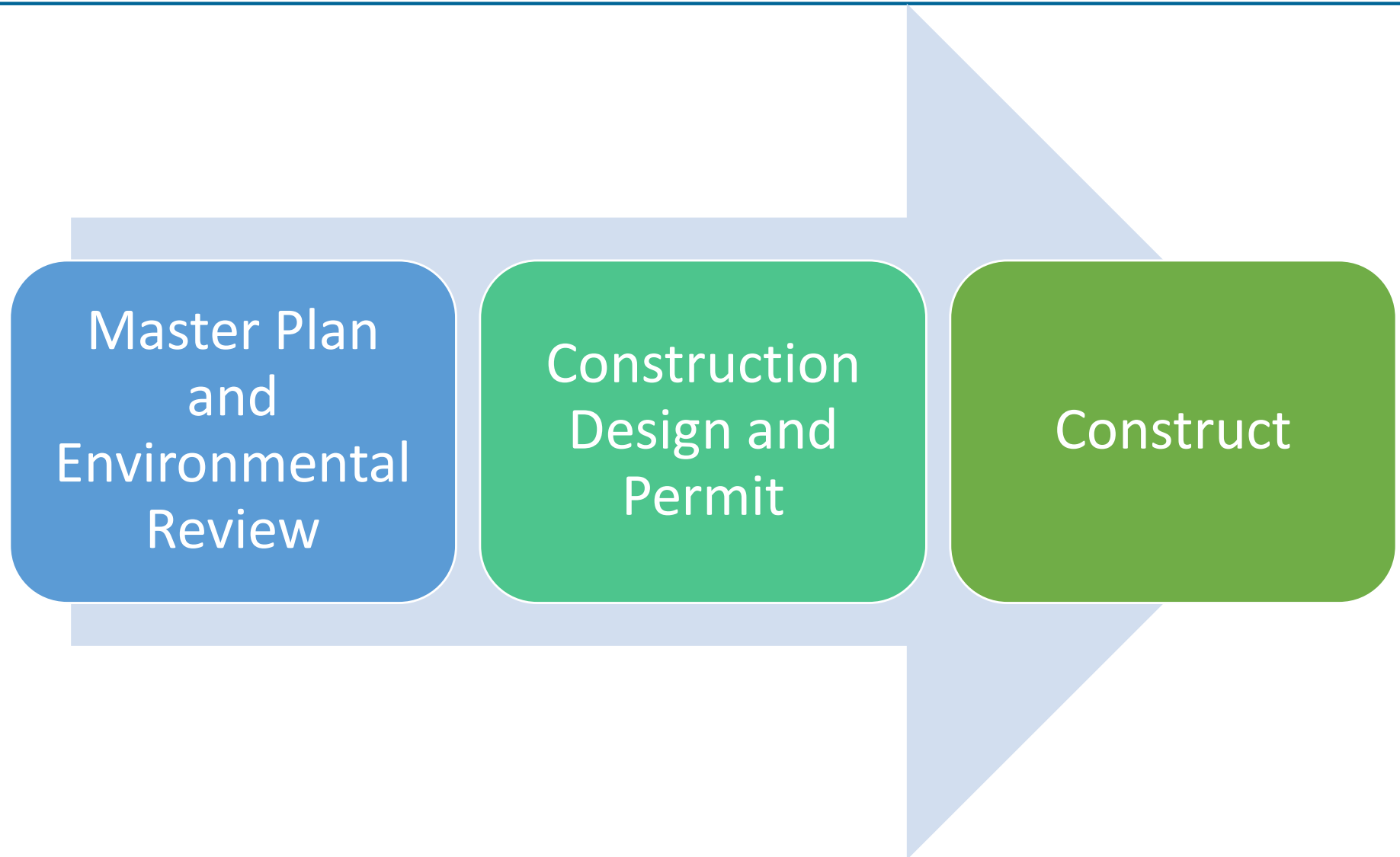


Station Discussions



Park Development

Park Development



Park Development – Est. Timeline





Ashwood Park Background

Ashwood Park



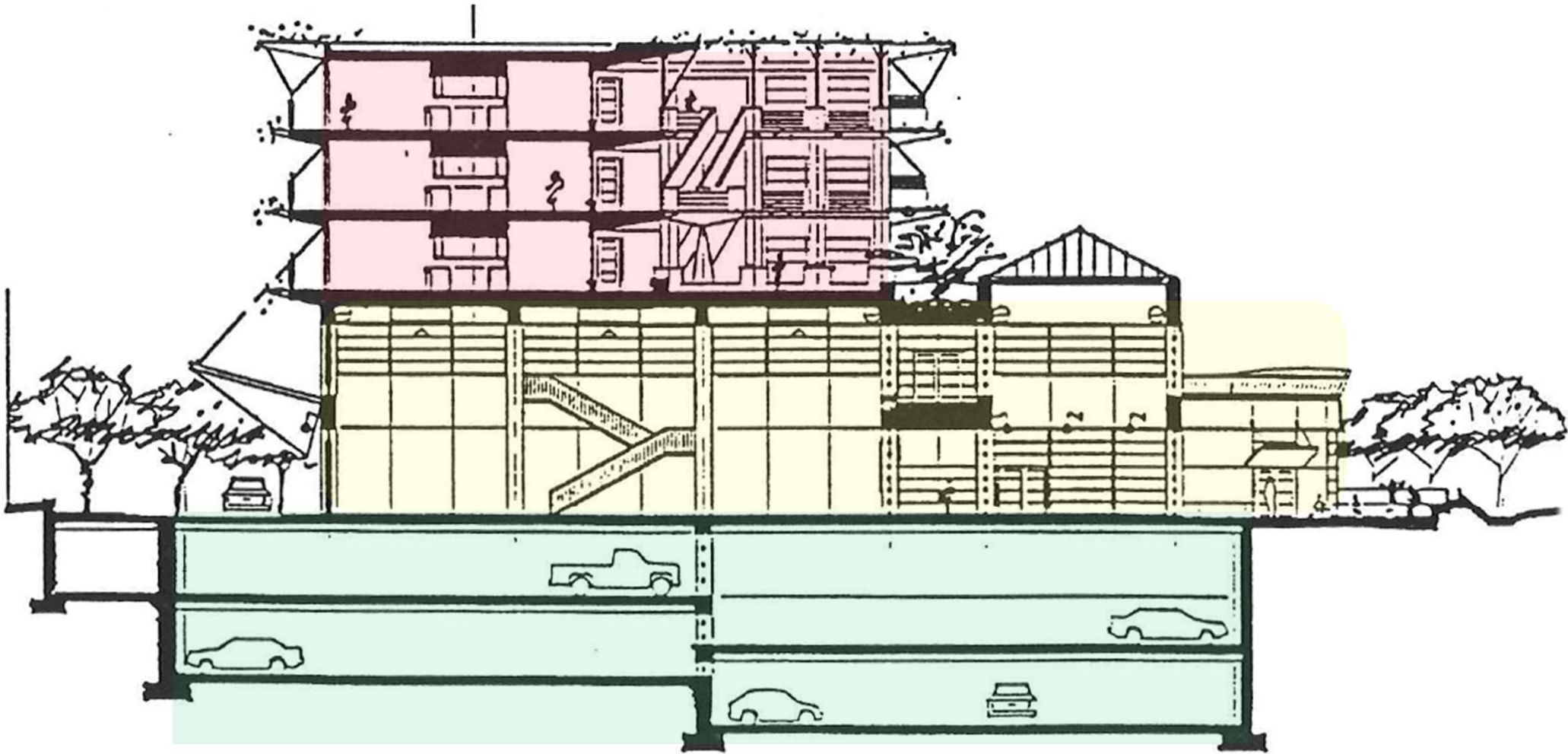
2023 Aerial

1990 Conceptual Site Plan



1990 Adopted Site Plan

1990 Conceptual Site Plan (Cont.)



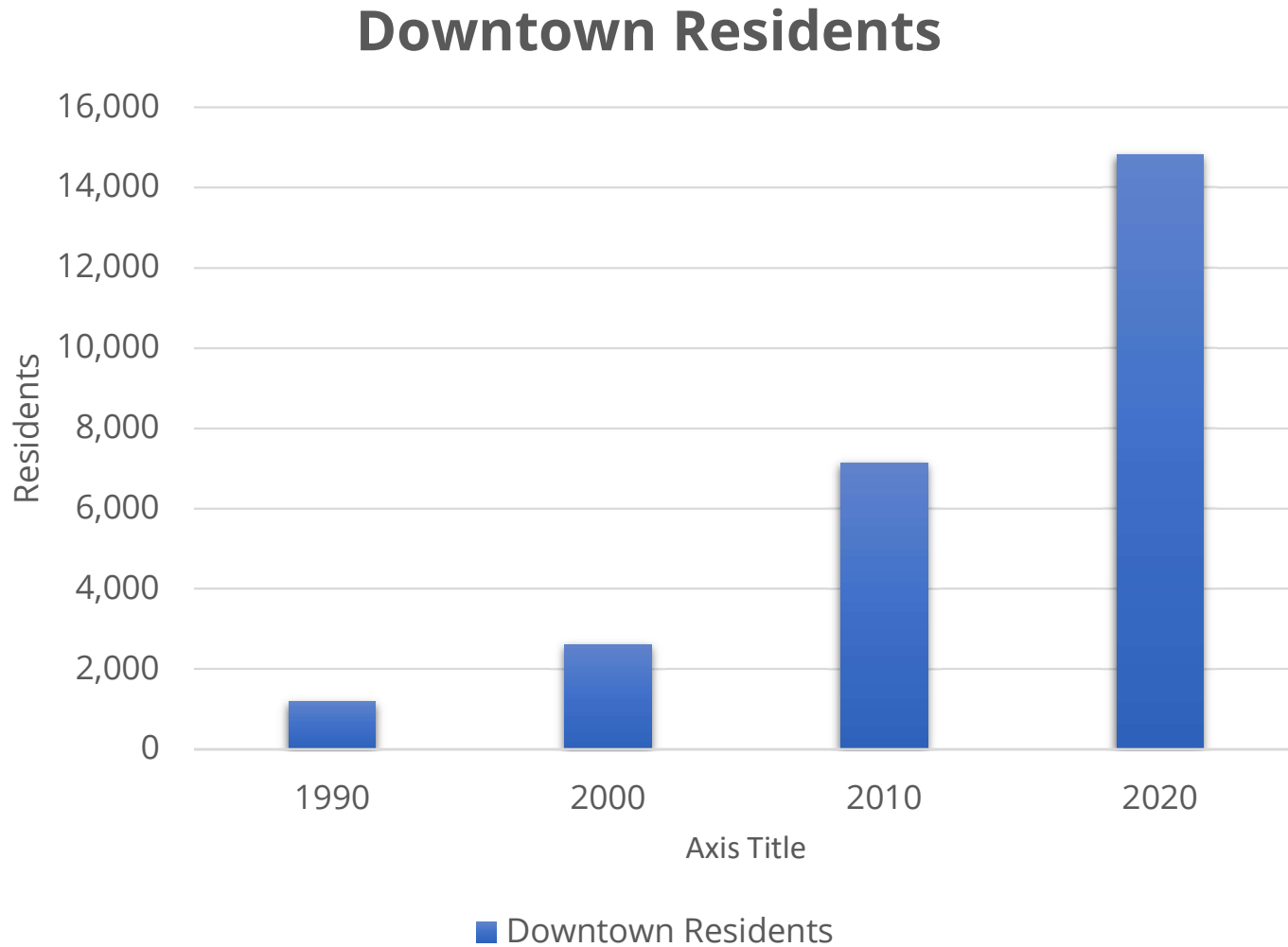
Ashwood Park



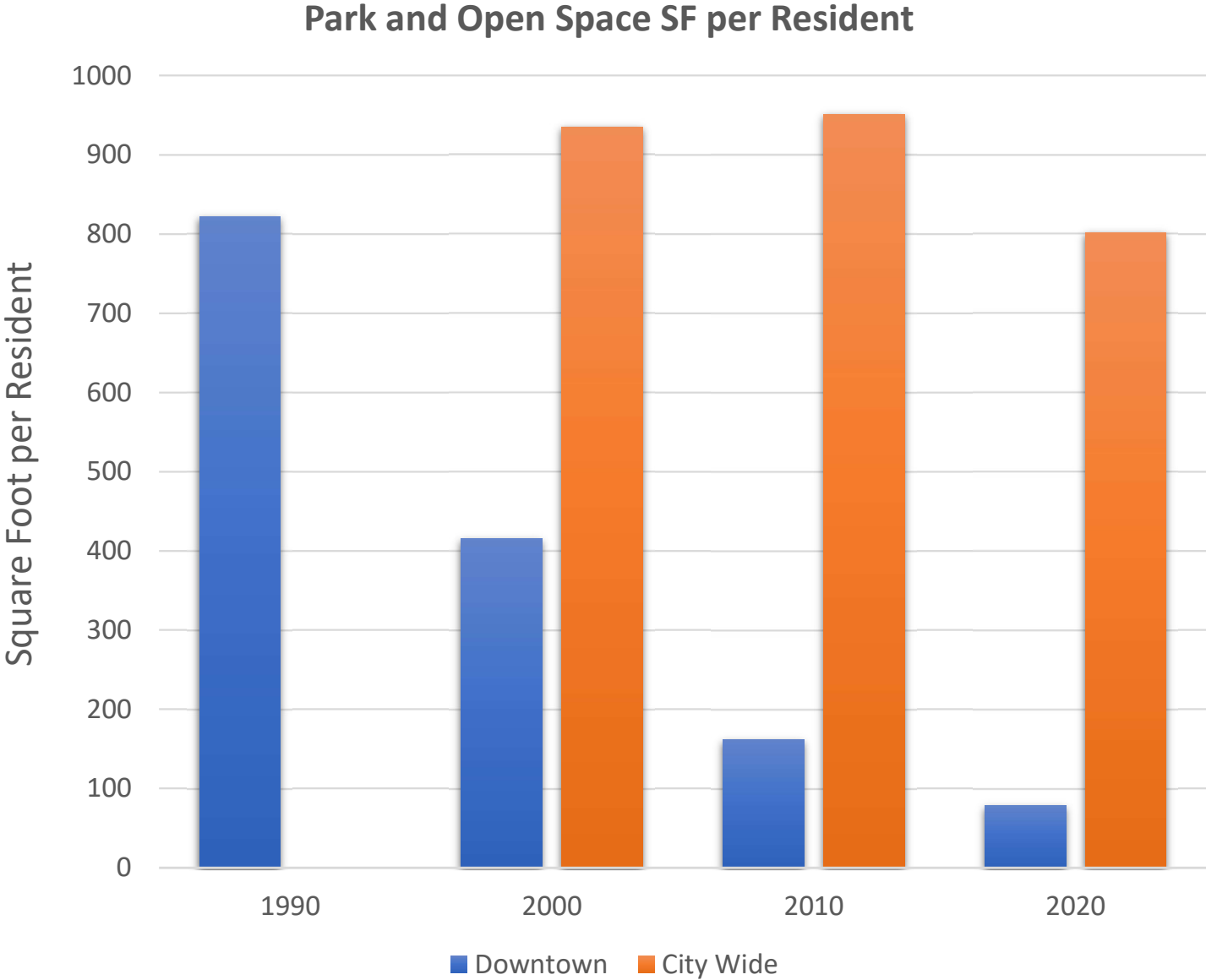


Downtown Bellevue – 30 Years

Downtown Residents



Park and Open Space Acre per Resident





Public Engagement

Public Outreach Plan

Goal and objectives

- Provide a range of opportunities for community input
- Generate broad reaching, cross cultural input
- Engage community stakeholders
- Keep public, Parks Board, and City Council informed
- Website: Bellevuewa.gov/ashwood-master-plan



Park Visioning

Park Visioning

Evaluation

- Establish criteria for decision making

Assessment

- Community Needs
- Current Conditions / Uses
- Opportunities and Challenges

Program

- Develop list of preferences
- Identify aesthetic character

Park Visioning - Evaluation Criteria

Screening Criteria:

1. % of HHs within Walkable Access Service Area
2. Access to Active, Passive, and Indoor Facilities
3. Costs
4. Site and Design Constraints
5. Citywide Goals

Optimization Criteria:

1. Public input from user groups; current use
2. Resident demographics
3. Other accessible Parks & Recreation spaces

SCREEN

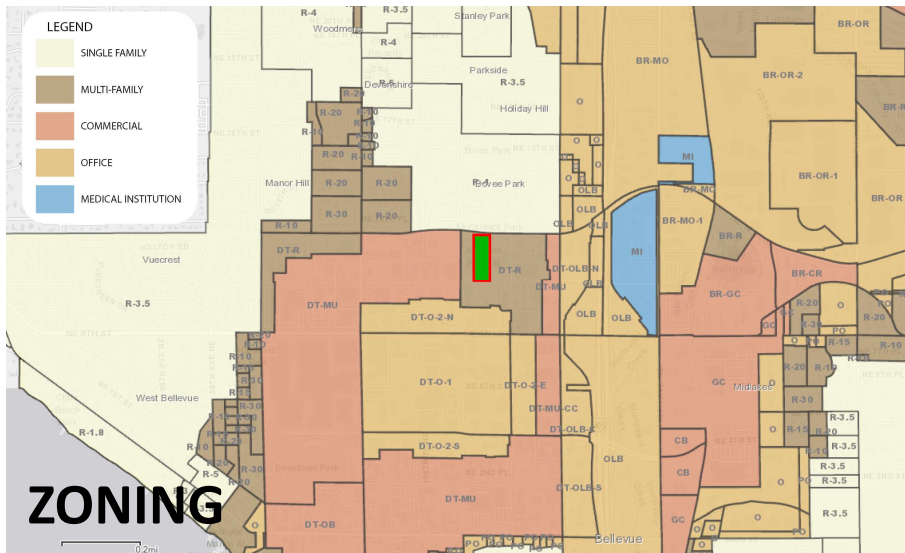
Evaluate feasibility, access, effects on levels of service for various alternatives



OPTIMIZE

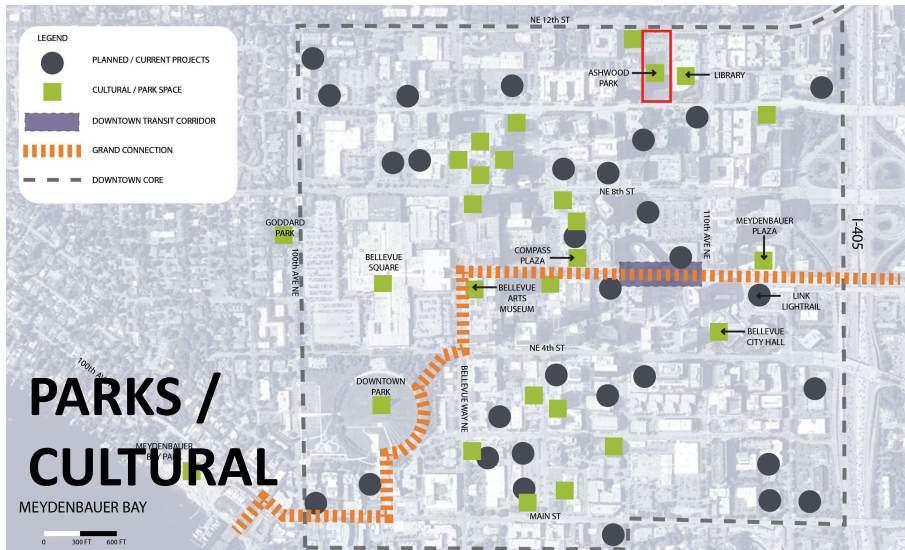
Program combination that matches the needs of user groups

Park Visioning - Assessment

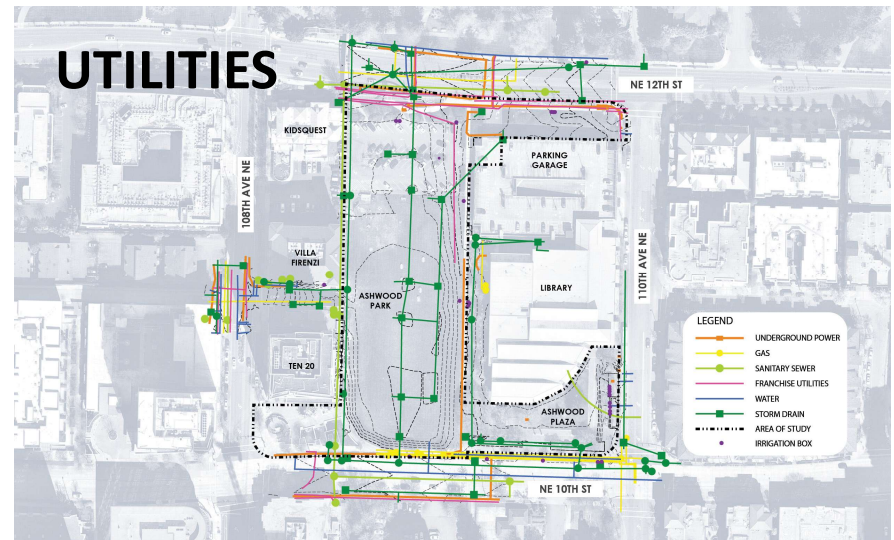
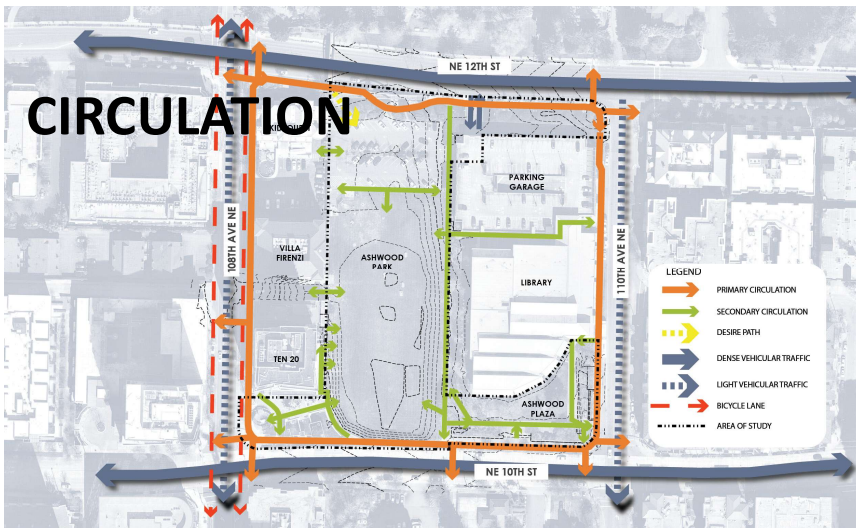
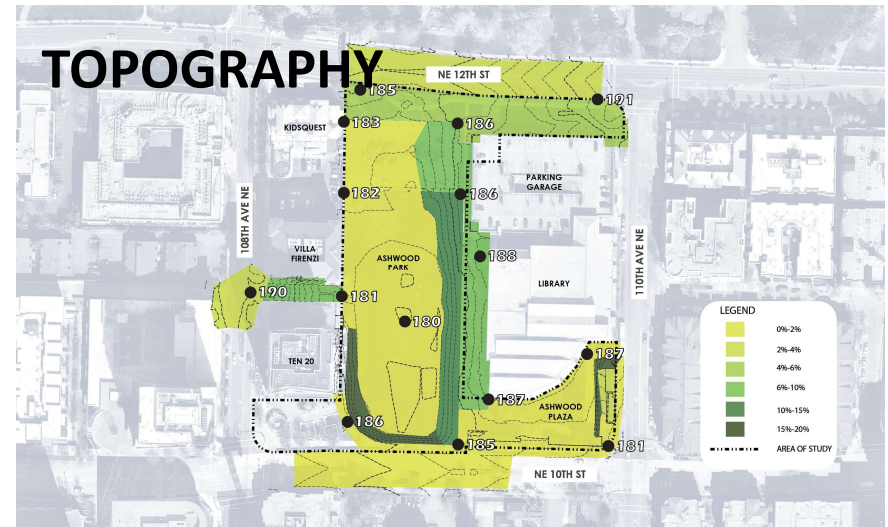
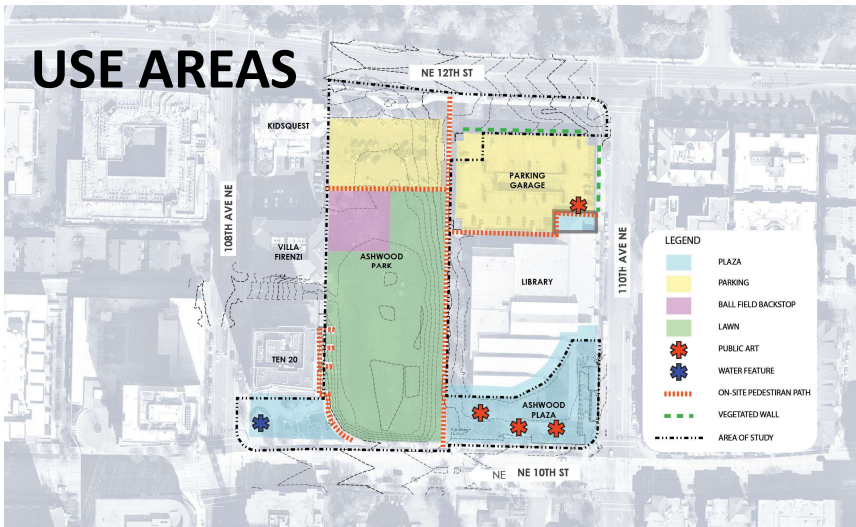


Community Needs

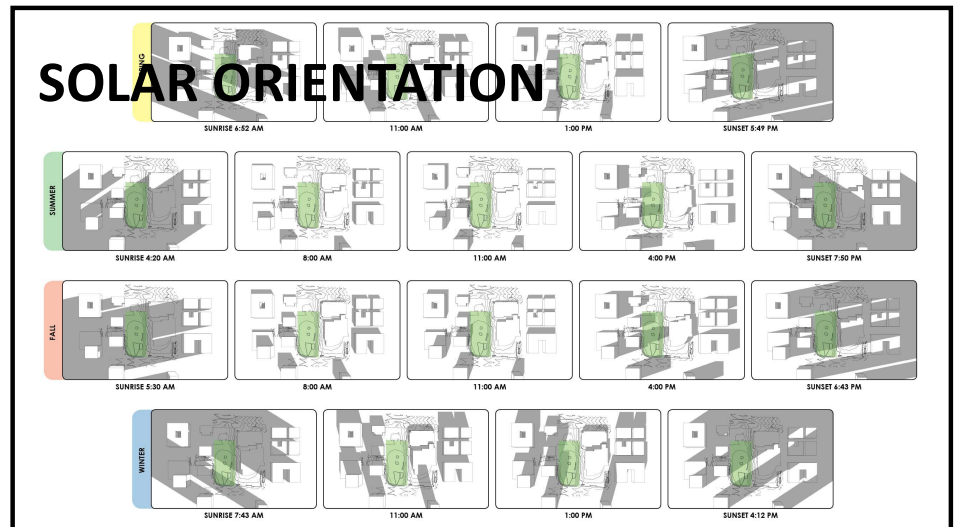
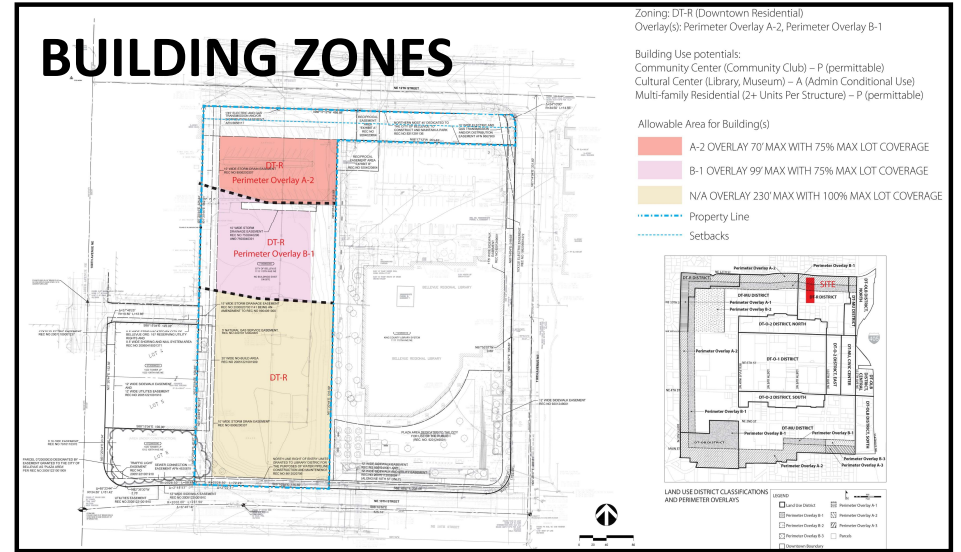
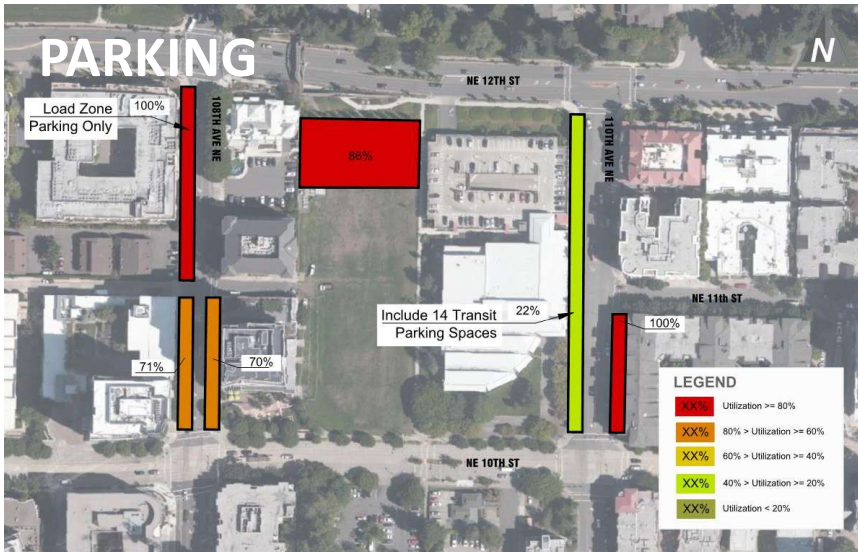
- Comprehensive Plan, Subarea Plan, Park and Open Space System Plan
- Targeted Public Outreach



Park Visioning - Assessment



Park Visioning - Assessment



Park Visioning - Program

GREENSPACE ACTIVITIES



PARK STRUCTURES



PLAZAS AND PATHWAYS



PARKING AND ACCESS



Park Visioning - Program

STATION #1 GREENSPACE ACTIVITIES



Park Visioning - Program

STATION #2 PARK STRUCTURES

concessions / sales



picnic shelter



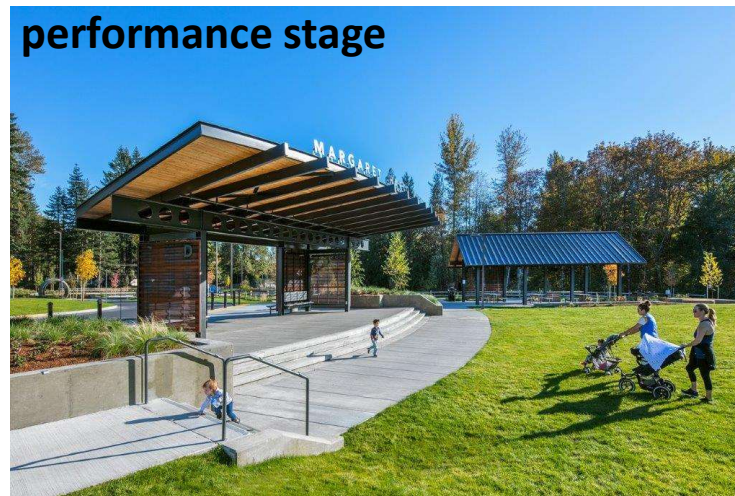
swings / benches



gateways/arches



performance stage



restrooms



dog park shelter



Park Visioning - Program

STATION #3

PLAZAS AND PATHWAYS



Park Visioning - Program

STATION #4

PARKING AND ACCESS



Park Visioning - Program

STATION #5

Vote with Dots!

What program elements are most important to you? (choose 3)

ADA Accessible Play Area 	Affordable Housing 	Community Social/Cultural Center 	Parking 	Landscape (Trees, Shrubs, Grass) 	Off-leash Dog Area 	Other? (Write In)
Picnic/Shade Shelter 	Public Restroom 	Sport Court(s) 	Multi-purpose Sports Field 	Walking/Rolling Path 	Outdoor Story/Gathering Space 	

Program Elements Voting

Ashwood Park Master Plan Update | Community Meeting #1

April 3, 2024

MAGLE
OD·RE
OKORD





Ways to Comment

Gathering Input

Station Discussions

- Join us in discussions at any or all of 4 stations
- We will take your comments and address questions

Vote with Dots at **STATION #5**

- Identify your three most important elements for park improvements

Survey and Comment

- Fill out a survey here or online at bellevuewa.gov/ashwood-master-plan
- Fill out a comment card here or online
- Find out who to talk to
- Sign up for alerts and meeting announcements on the website

Contact: Zachariah Collom zcollom@bellevuewa.gov
bellevuewa.gov/ashwood-master-plan



Questions and Comments?