



**MARCH-JUNE  
2024**

# KELSEY CREEK FARM

Promoting learning opportunities  
in a farm environment





**Kelsey Creek Farm** provides the community an opportunity to cross the threshold of urban living into an agricultural experience, while maintaining the historic integrity of the farm, through interpretive displays and education. Our programs foster creativity and active play. The Farm's two historical barns sit prominently on the crest of a hill. There is no entrance fee; however, we welcome and appreciate your donations.

When visiting any of Bellevue's parks, all dogs and other pets must be kept on a leash. Out of consideration for our farm animals' health and wellbeing, please observe all posted signs prohibiting pets from the barnyard.

**FARM ANIMALS IN THE PASTURES  
DAILY FROM 9 a.m.-3 p.m.  
365 DAYS A YEAR  
(R) RESIDENT / (N) NON-RESIDENT**

# Weekday Classes

## Adult/Child Teams

### Farm Story Time

Come enjoy story time in a farm setting. Each story session will involve a different farm-related theme and include a visit with one of our resident farm animals. The stories will come alive for your children as they see the featured animal characters from the stories in real life. Pre-registration not required. Children must be accompanied by an adult. Space is limited. Doors close when the program begins.

**Ages: 1-5**

**Fees: FREE**

**Hours/Dates: 10-10:30 a.m.**

[March 28 \(Thursday\)](#)

[May 2 \(Thursday\)](#)

[June 13 \(Thursday\)](#)



### Little Farmers

Join us for hands-on fun in the barn and barnyard with your 2-3-year-old. Classes will feature various farm animals, seasonal themes, barn chores, feeding and petting farm animals, crafts, parallel play, and a pony ride. Children team up with an adult to actively participate in this class. Each session focuses on a different set of animals and will have different activities. Some activities and animals will overlap but many will be new. Come dressed to play inside and outside and get dirty! Siblings under two are welcome in front or backpacks.

**Ages: 2-3**

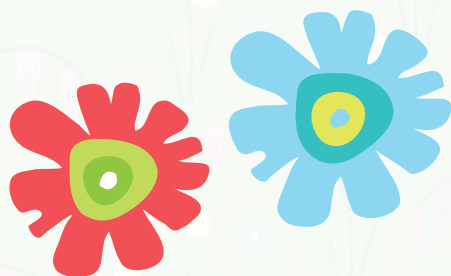
**Hours/Dates: 10-11:30 a.m.**

**Fees: \$78 (R) \$94 (N)**

[March 5-19 \(Tuesdays\)](#)

**Fee: \$55 (R) \$66 (N)**

[April 2-16 \(Tuesdays\)](#)





**Fee: \$78 (R) \$94 (N)**

May 7-21 (Tuesdays)

**Fees: \$55 (R) \$66 (N)**

May 28-June 4 (Tuesdays)

**Private Trail Rides**

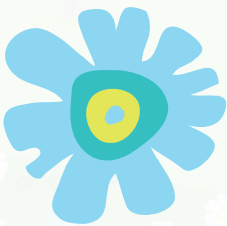
Your child will get to ride one of our adorable ponies on a private ride through the barnyard or trails at Kelsey Creek Farm. Your child will learn the basics of horseback riding and experience the farm in a whole new way. One adult may choose to walk along, but no strollers allowed. We recommend only signing up for one 15-minute increment per day.

**Ages: 2-5**

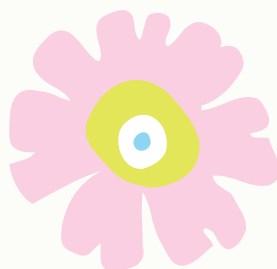
**Fees: \$20 (R) \$24 (N)**

**Dates/Hours:**

|                          |                       |
|--------------------------|-----------------------|
| <u>May 2 (Thursday)</u>  | <u>2-2:15 p.m.</u>    |
| <u>May 2 (Thursday)</u>  | <u>2:15-2:30 p.m.</u> |
| <u>May 2 (Thursday)</u>  | <u>2:30-2:45 p.m.</u> |
| <u>May 2 (Thursday)</u>  | <u>2:45-3 p.m.</u>    |
| <u>May 7 (Tuesday)</u>   | <u>2-2:15 p.m.</u>    |
| <u>May 7 (Tuesday)</u>   | <u>2:15-2:30 p.m.</u> |
| <u>May 7 (Tuesday)</u>   | <u>2:30-2:45 p.m.</u> |
| <u>May 7 (Tuesday)</u>   | <u>2:45-3 p.m.</u>    |
| <u>May 9 (Thursday)</u>  | <u>2-2:15 p.m.</u>    |
| <u>May 9 (Thursday)</u>  | <u>2:15-2:30 p.m.</u> |
| <u>May 9 (Thursday)</u>  | <u>2:30-2:45 p.m.</u> |
| <u>May 9 (Thursday)</u>  | <u>2:45-3 p.m.</u>    |
| <u>May 14 (Tuesday)</u>  | <u>2-2:15 p.m.</u>    |
| <u>May 14 (Tuesday)</u>  | <u>2:15-2:30 p.m.</u> |
| <u>May 14 (Tuesday)</u>  | <u>2:30-2:45 p.m.</u> |
| <u>May 14 (Tuesday)</u>  | <u>2:45-3 p.m.</u>    |
| <u>May 16 (Thursday)</u> | <u>2-2:15 p.m.</u>    |
| <u>May 16 (Thursday)</u> | <u>2:15-2:30 p.m.</u> |
| <u>May 16 (Thursday)</u> | <u>2:30-2:45 p.m.</u> |
| <u>May 16 (Thursday)</u> | <u>2:45-3 p.m.</u>    |
| <u>May 21 (Tuesday)</u>  | <u>2-2:15 p.m.</u>    |



|                          |                       |
|--------------------------|-----------------------|
| <u>May 21 (Tuesday)</u>  | <u>2:15-2:30 p.m.</u> |
| <u>May 21 (Tuesday)</u>  | <u>2:30-2:45 p.m.</u> |
| <u>May 21 (Tuesday)</u>  | <u>2:45-3 p.m.</u>    |
| <u>May 23 (Thursday)</u> | <u>2-2:15 p.m.</u>    |
| <u>May 23 (Thursday)</u> | <u>2:15-2:30 p.m.</u> |
| <u>May 23 (Thursday)</u> | <u>2:30-2:45 p.m.</u> |
| <u>May 23 (Thursday)</u> | <u>2:45-3 p.m.</u>    |
| <u>May 28 (Tuesday)</u>  | <u>2-2:15 p.m.</u>    |
| <u>May 28 (Tuesday)</u>  | <u>2:15-2:30 p.m.</u> |
| <u>May 28 (Tuesday)</u>  | <u>2:30-2:45 p.m.</u> |
| <u>May 28 (Tuesday)</u>  | <u>2:45-3 p.m.</u>    |
| <u>May 30 (Thursday)</u> | <u>2-2:15 p.m.</u>    |
| <u>May 30 (Thursday)</u> | <u>2:15-2:30 p.m.</u> |
| <u>May 30 (Thursday)</u> | <u>2:30-2:45 p.m.</u> |
| <u>May 30 (Thursday)</u> | <u>2:45-3 p.m.</u>    |



## Drop Off Programs

### Farm Explorers

Join us for a farm adventure featuring animal care, barn chores, a pony ride, and baking yummy snacks. This drop-off program is designed for the independent 4-6 year-old. Curriculum is integrated with seasonal themes, arts and crafts, stories, and animal interactions. This class includes a pony ride. Some activities and animals will repeat but many will be new.

**Ages: 4-6**

**Fees: \$96 (R) \$115 (N)**

**Hours/Dates: 10 a.m.-12:30 p.m.**

March 7-21 (Thursdays)

**Fees: \$64 (R) \$77 (N)**

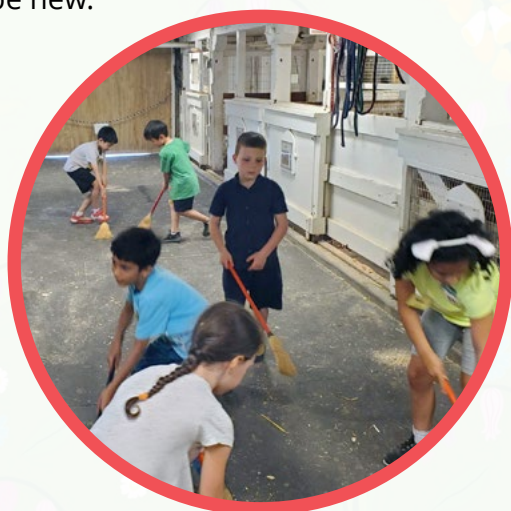
April 4-18 (Thursdays)

**Fees: \$96 (R) \$115 (N)**

May 9-23 (Thursdays)

**Fees: \$64 (R) \$77 (N)**

May 30- June 6 (Thursdays)



## Junior Farmers

Your child will be immersed in farm life in this after-school program. Activities include interacting with our farm animals, exploring the park's natural habitats, and creating crafts. Your child will take the animals on walks around the farm, see what's growing in the garden, and explore Bellevue's past through the historic buildings at Kelsey Creek Farm.

**Ages: 7-9**

**Fees: \$78 (R) \$94 (N)**

**Hours/Dates: 2-4 p.m.**

[March 6-20 \(Wednesdays\)](#)

**Fees: \$52 (R) \$63 (N)**

[April 3-17 \(Wednesdays\)](#)

**Fees: \$78 (R) \$94(N)**

[May 8-22 \(Wednesdays\)](#)

**Fees: \$52 (R) / \$63 (N)**

[May 29-June 5 \(Wednesdays\)](#)



## Weekend Workshops

### St. Patrick's Celebration

Celebrate St. Patrick's Day at the farm with the animals! We'll dress up a pony in green decorations, go on a treasure hunt to look for leprechaun gold, and do a craft. Adult/child teams only, a team is one child and one adult.

**Ages: 4-8**

**Fees: \$25 (R) \$30 (N)**

**Hours/Dates: 1-2 p.m.**

[March 17 \(Sunday\)](#)

### Grass to Butter:

### An Introduction to Farm Science and a Tasty Snack

How does a farm actually work? Come meet our cows and see what's growing in our pastures. You'll learn how cows digest grass, when they produce milk, and what people can make with milk. Then we'll make butter with milk from a certified western Washington dairy and

taste-test it with some yummy crackers. Adult/child teams only, a team is one child and one adult.

**Ages: 4-8**

**Fees: \$25 (R) \$30 (N)**

**Hours/Dates: 1-2 p.m**

March 31 (Sunday)

## Log Cabin Open House

Visitors of all ages are welcome to join us for this free, drop-in activity to explore Kelsey Creek Farm's log cabin, which was built in 1888. We will have antique logging and farming implements from the 1880s on display, including a variety of axes, farm implements, and other tools. Children can participate in a variety of free pioneer activities, including grinding wheat, churning butter, and playing with bread dough. They can watch a wool spinning demonstration and try their hand at carding wool. Adults can take a deeper dive into the history of logging and farming on the Eastside with our farm's passionate historian. Registration is not required.

**Ages: All ages welcome**

**Fees: FREE**

**Hours/Dates: 1-3 p.m.**

April 21 (Sunday)

## Bees and Blooms

Come meet Kelsey Creek Farm's newest residents, the honeybees! You and your child will visit our bees, explore what kinds of flowers pollinators like, and make a bee-themed notebook. We'll talk about what honeybees do on farms and what native bees do for us all over Bellevue. Adult/child teams only. A team is one adult and one child.

**Ages: 4-8**

**Fees: \$25 (R) \$30 (N)**

**Hours/Dates: 1-2 p.m.**

May 19 (Sunday)





# Volunteer Opportunities

## Sheep Shearing Special Event Volunteer

Assist staff with event set up, running children's activity booths and other event tasks at our annual Sheep Shearing event. This is one of Bellevue's most unique events, running for over 40 years. Volunteers will gain experience working a large event, customer service skills, experience working with children, and teamwork skills while earning community service hours.

**Ages: 15+**

**Fees: Free**

**Dates/Hours: 9:30 a.m.-5 p.m.**

[April 27 \(Saturday\)](#)

## After School Teen Farm Volunteers

Assist Kelsey Creek Farm staff in providing daily care to our farm animals. Help prepare meals for the animals, clean their living quarters, assist with other farm chores, and help bring the animals back into the barn each day. Teens will learn responsible animal care, job skills, and independence while earning service hours for school.

**Ages: 12-18**

**Fees: \$15 (R) \$18 (N)**

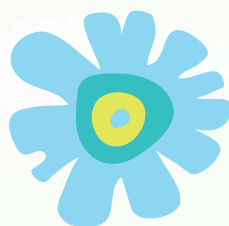
**Hours/Dates: 2-4:30 p.m**

[March 6-20 \(Wednesday\)](#)

[April 3-17 \(Wednesdays\)](#)

[May 8-22 \(Wednesdays\)](#)

[May 29-June 12 \(Wednesdays\)](#)



## Saturday Morning Teen Farm Volunteers

Assist Kelsey Creek Farm staff in providing daily care to our farm animals. Help prepare meals for the animals, clean their living quarters, assist with other farm chores, and help bring the animals out to pasture for the day. Teens will learn responsible animal care, job skills, and independence while earning service hours for school.

**Ages: 15-18**

**Fees: \$15 (R) \$18 (N)**

**Hours/Dates: 8:30 a.m.-12 p.m.**



March 9-23 (Saturday)

April 6-20 (Saturday)

May 11-25 (Saturday)

June 1-15 (Saturday)

## Adult Farm Volunteers

Assist Kelsey Creek Farm staff in providing daily care to our farm animals. Help staff bring the animals out to pasture, clean their living quarters, and prepare meals for the animals each day. Volunteers will learn about caring for livestock and about Bellevue's agricultural history while giving back to their community.

**Ages: 18+**

**Fees: FREE**

**Hours/Dates: 8:30-10:30 a.m.**

March 5-April 16 (Tuesday)

March 6-April 17 (Wednesday)

May 7-June 11 (Tuesday)

May 8-June 12 (Wednesday)



## Spring Break Camps

### Future Veterinarian: Equine Camp

Become a vet and learn all about the care and maintenance of a horse. Take an oath and use real medical tools to keep your newly adopted plush horse happy and healthy. After learning about horse anatomy, riding styles, and nutrition you can ride into the sunset with your diploma. Giddy up! Please note: this camp does not include a pony ride.

**Ages: 8-10**

**Fees: \$350 (R) \$420 (N)**

**Hours/Dates: 9:15 a.m.-12:15 p.m.**

April 8-12 (Monday-Friday)



## Future Doctor Camp

Camp participants will role-play the key responsibilities of a doctor and learn about vital organs in the human body. These future doctors will learn how to use a stethoscope, blood pressure cuff, and reflex hammer. They will practice administering first aid, learn how pharmacists play a role in administering medications, and more!

**Ages: 8-10**

**Fees: \$350 (R) \$420 (N)**

**Hours/Dates: 1-4 p.m.**

[April 8-12 \(Monday-Friday\)](#)

## Special Events

### Sheep Shearing

Watch the sheep being shorn of their winter coats. Enjoy wool spinning demonstrations, children's crafts, tractor-pulled wagon rides, food, animal viewing areas, and more. Free shuttle service available at Wilburton Park & Ride and Bannerwood Sports Park. Please note: no pets allowed on shuttle bus or in the barnyard areas. No registration needed. Admission is free, costs vary for food and activities.

**Ages: All**

**Dates/Hours: 11 a.m.-4 p.m.**

[April 27 \(Saturday\)](#)



# Birthday Parties

Kelsey Creek Farm offers a variety of party packages to make your child's day special. All party packages are approximately two hours long. Each party begins with a guided tour and group activity led by a member of our farm staff. Activities and crafts vary based on party themes. The guided activity time is followed by a one-hour room rental for cake and presents. Please note: animals available for interaction may change without notice based on individual animals' health and wellbeing.

Room locations may vary, but all party locations are indoor and include:

- ◆ 3 preschool-height tables (6 feet long by 2.5 feet wide) with children's chairs
- ◆ A refrigerator/freezer and microwave
- ◆ A restroom with hand-washing soap and paper towels

Maximum capacity for all parties is 25 people (number includes adults and children) and has been set to respect facility codes, the safety and well-being of the animals, and to ensure guest enjoyment.

## Farm Birthday Party

Celebrate your child's birthday with a visit to our historic farm. Make memories meeting farm animal friends. Birthday party package includes an approximately 45-minute farm tour and farm-themed craft, followed by one hour of room rental.

**Ages: 2-11**

**Fees: \$350 (R) \$420 (N)**

## Bunny Birthday Party

Celebrate your child's birthday by visiting the farm and meeting our friendly bunny. Enjoy a farm tour, a bunny craft, and extra time visiting the bunnies. Birthday party package includes approximately 45-minute farm tour and bunny themed craft, followed by one hour of room rental.

**Ages: 2-11**

**Fees: \$350 (R) \$420 (N)**



## Pony Birthday Party

Celebrate your child's birthday by visiting the farm and meeting one of our ponies. Enjoy a farm tour, pony craft, and special time with the birthday pony. Birthday party package includes an approximately 45-minute farm tour and pony-themed craft, followed by one hour of room rental. Please note: this party does NOT include a pony ride.

**Ages: 4-11**

**Fees: \$350 (R \$420 (N))**



## Guided Farm Tours

Experience the farm with a tour designed specifically for groups. Choose from various year-round and seasonal themes. Guided farm tours are available weekdays and are approximately 45 minutes in length. Each tour includes time with a variety of farm animals and a group activity led by a member of our farm staff. Animals included in tour and group activities vary based on tour themes. Please note animals available for interaction during the guided tour may change without notice based on individual animals' health and well-being.

**Ages: most tours appropriate for children ages 2+  
(see below for exceptions)**

### Kids on the Farm Group Tour

Available year-round

Explore our historic dairy farm with hands-on fun as you meet our farm animals. Learn interesting animal facts and local history as you travel back in time to when Bellevue was mostly farmland and forest. Go into the animal barn to see where the animals sleep at night and work on barn "chores" with child-sized pails and rakes.





## Fuzzy Farm Friends Group Tour

Available year-round

Have you ever wondered where yarn and wool sweaters come from? How does a sheep give us a pair of warm wool socks? Meet the Kelsey Creek Farm sheep and practice the skill of carding wool all while learning about sheep and fiber processing. Children will create a fuzzy sheep craft to take home.



## Pioneers on the Farm Group Tour

Available year-round (recommended for ages 4+)

Imagine life in Bellevue in the 1880s. Children spend time looking around the Fraser cabin, built in 1888, and learning about what life was like for the pioneers when they arrived in the Bellevue area. Practice pioneer living history skills and go on a farm walk to learn how some of our farm animals would have been used by the pioneers.

## Springtime in the Barnyard Group Tour

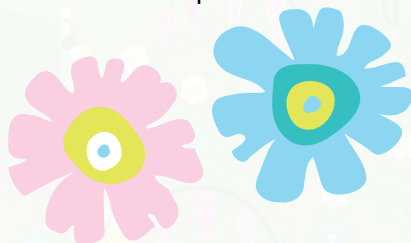
Available mid-May to mid-June only

Welcome springtime in the barnyard with a hands-on tour among our favorite animals. Learn about their care, then get dirty in the garden planting and watering seeds.

## Fall on the Farm Group Tour

Available October only

Experience harvest season on the farm! Visit with some of our friendly farm animals and watch them eat a pumpkin treat. Then finish up by enjoying a story in our indoor off-the-vine pumpkin patch. Pumpkins are available for purchase for an additional fee.



# Rentals

For more rental information including pricing and room specs, visit [BellevueWA.gov/kelsey](http://BellevueWA.gov/kelsey).

## Outdoor Rentals

### Kelsey Creek Farm Picnic Shelter

Rent Kelsey Creek Farm's Picnic Shelter for your next event! This covered picnic shelter has a capacity of 75 people and includes 6 picnic tables and 2 charcoal grills. To reserve, visit our online catalog at [Register.BellevueWA.gov](http://Register.BellevueWA.gov). Questions? Email [kelseycreekfarm@bellevuewa.gov](mailto:kelseycreekfarm@bellevuewa.gov).



## Indoor Rentals

Looking for space to host a party, class, or meeting? Kelsey Creek Farm features several indoor rental spaces including a Farm House with a 760 square-foot community room and kitchen space as well as a 900 square-foot room in the historic 1943 barn. The unique farm setting makes these spaces perfect for memorable events.

Both rental spaces can be reserved seven days a week, and these spaces easily accommodate groups large or small with rooms for groups from 10 to 30 people. To reserve, send an email with requested dates and times to [kelseycreekfarm@bellevuewa.gov](mailto:kelseycreekfarm@bellevuewa.gov).

**Kelsey Creek Farm Room (Education Barn)**



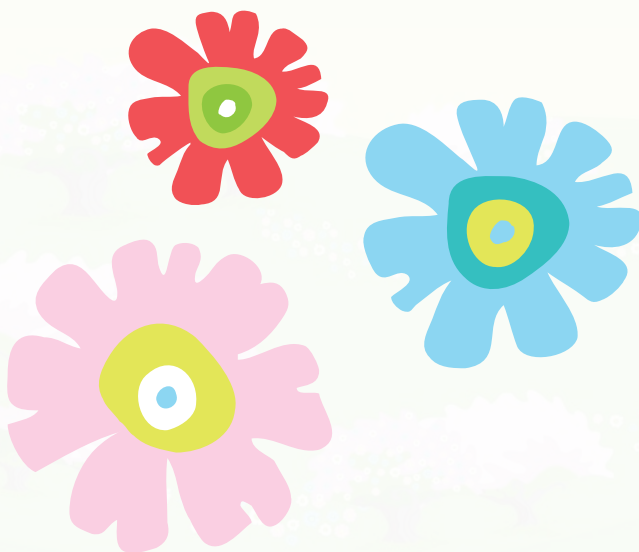
**Kelsey Creek Farm House**



## Scholarships

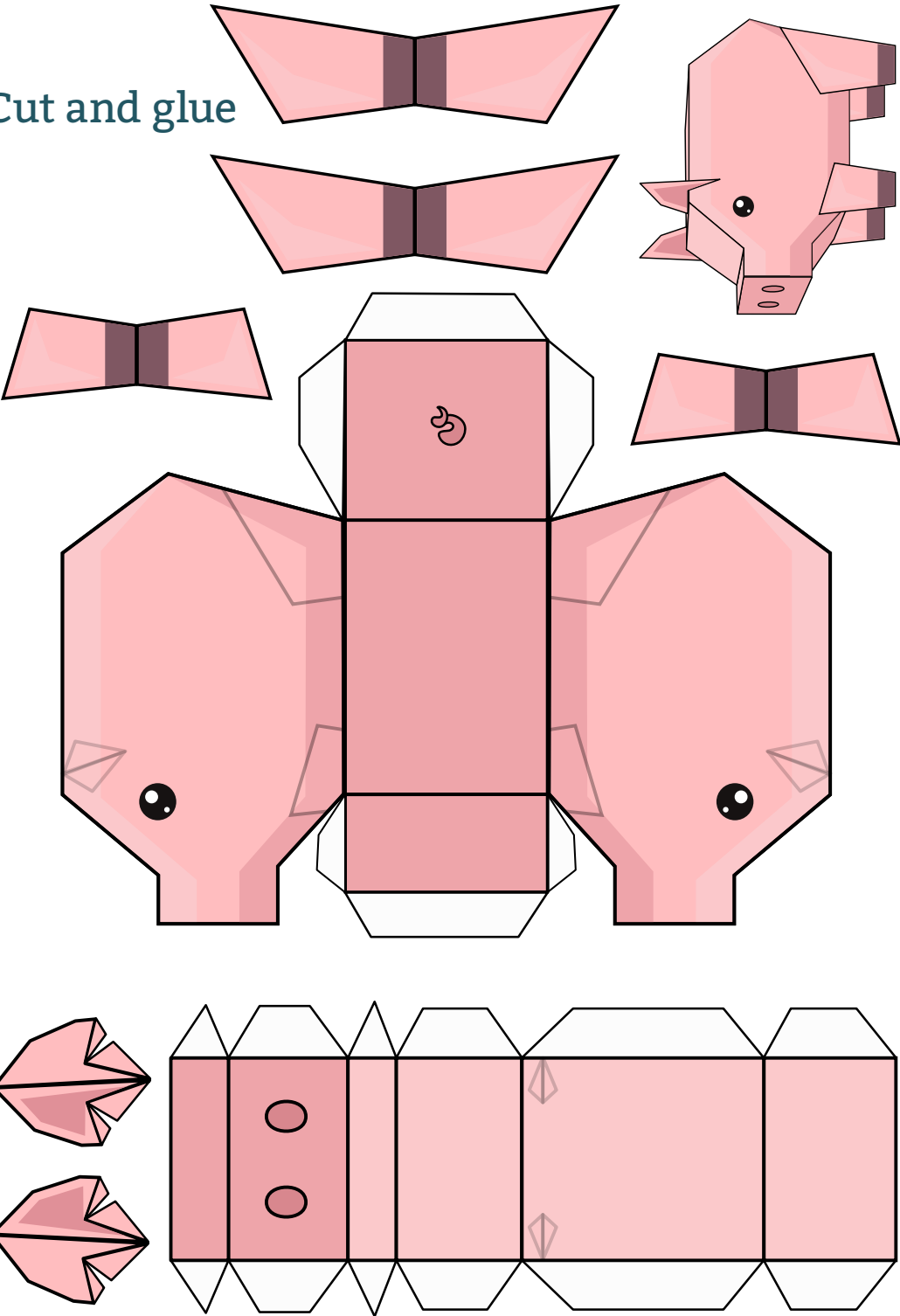
Bellevue Parks & Community Services strives to make program opportunities available to all interested individuals who live in Bellevue, regardless of income. We provide financial assistance to those who might not otherwise be able to participate. Scholarships may be granted for the entire class fee or may provide a percentage discount, depending on individual circumstances.

Visit [BellevueWA.gov/city-government/departments/parks/programs/scholarships](https://BellevueWA.gov/city-government/departments/parks/programs/scholarships) for information and application.





Cut and glue



Help the animals find their babies





## FARM HISTORY

The farm's history began in 1921, when the Duey Family rented 190 acres and began delivering cream and butter stamped with the name Twin Valley Dairy. In August of 1933 the original barn burned. Mr. Duey, a skilled carpenter, along with some hired hands, rebuilt the barn in two weeks. Today, this barn is the smaller of the two barns and is called the Animal Barn. Mr. Duey also built the Red Barn, originally used as a milk house.

The second dairy barn was built in 1943–44 by Mr. Michaels, the new owner, (this is the north barn now known as the Education Barn) and the dairy herd was increased in size. After the end of WWII, he sold the farmstead to Ray and Nettie Fisher. The Fishers phased out the dairy operation and began raising Hereford beef cattle. They built the current farmhouse in 1954 and moved to live on the property.

In 1968 neighbors to the farm began a movement to petition the Bellevue City Council to purchase the property and secure it as a public park. The neighbors' petition succeeded, and the city negotiated with the Fisher family to purchase the 80 acres, including the farmhouse, barns and outbuildings. The Fishers sold their farm property to the City at a price much reduced from what they knew that they could get from developers. They did so because they believed in preserving the beauty and legacy of the agricultural buildings and the land.

In 1972 the oldest barn was modified to house an assortment of farm animals for public viewing. The other, larger barn, commonly referred to as the Education Barn, was remodeled inside and used to accommodate a variety of community programs, including children's day camps, art classes, and farm-themed classes, to name just a few.

# REGISTER ONLINE!

[register.bellevuewa.gov](https://register.bellevuewa.gov)

Scholarships available for  
many programs.

**(R) RESIDENT / (N) NON-RESIDENT**



Kelsey Creek Farm

410 130th Pl SE | Bellevue, WA 98005

425-452-7688

[KelseyCreekFarm@bellevuewa.gov](mailto:KelseyCreekFarm@bellevuewa.gov)



For alternate formats, interpreters, or reasonable modification requests please phone at least 48 hours in advance 425-452-4253 (voice) or email [hcox@bellevuewa.gov](mailto:hcox@bellevuewa.gov). For complaints regarding modifications, contact the City of Bellevue ADA, Title VI, and Equal Opportunity Officer at [ADATitleVI@bellevuewa.gov](mailto:ADATitleVI@bellevuewa.gov).