



**JAN-MARCH
2024**

KELSEY CREEK FARM

Promoting learning opportunities
in a farm environment





Kelsey Creek Farm provides the community an opportunity to cross the threshold of urban living into an agricultural experience, while maintaining the historic integrity of the farm, through interpretive displays and education. Our programs foster creativity and active play. The Farm's two historical barns sit prominently on the crest of a hill. There is no entrance fee; however, we welcome and appreciate your donations.

When visiting any of Bellevue's parks, all dogs and other pets must be kept on a leash. Out of consideration for our farm animals' health and wellbeing, please observe all posted signs prohibiting pets from the barnyard.

**FARM ANIMALS IN THE PASTURES
DAILY FROM 9 a.m.-3 p.m.
365 DAYS A YEAR
(R) RESIDENT / (N) NON-RESIDENT**

Weekday Classes

Adult/Child Teams

Farm Story Time

Come enjoy story time in a farm setting. Each story session will involve a different farm-related theme and include a visit with one of our resident farm animals. The stories will come alive for your children as they see the featured animal characters from the stories in real life. Pre-registration not required. Children must be accompanied by an adult. Space is limited. Doors close when the program begins.

Ages: 1-5

Fees: FREE

Hours/Dates: 10-10:30 a.m

[Jan. 4 \(Thursday\)](#)

[Feb. 1 \(Thursday\)](#)

[Feb. 29 \(Thursday\)](#)

[March 28 \(Thursday\)](#)



Little Farmers

Join us for hands-on fun in the barn and barnyard with your 2-3-year-old. Classes will feature various farm animals, seasonal themes, barn chores, feeding and petting farm animals, crafts, parallel play, and a pony ride. Children team up with an adult to actively participate in this class. Each session focuses on a different set of animals and will have different activities. Some activities and animals will overlap but many will be new. Come dressed to play inside and outside and get dirty! Siblings under two are welcome in front or backpacks.

Ages: 2-3

Fees: \$78 (R) \$94 (N)

Hours/Dates: 10-11:30 a.m.

3-Week Sessions

[Jan. 9-23 \(Tuesday\)](#)

[Feb. 6-20 \(Tuesday\)](#)

[March 5-19 \(Tuesday\)](#)



Drop Off Programs

Farm Explorers

Join us for a farm adventure featuring animal care, barn chores, a pony ride, and baking yummy snacks. This drop-off program is designed for the independent 4-6 year-old. Curriculum is integrated with seasonal themes, arts and crafts, stories, and animal interactions. This class includes a pony ride. Some activities and animals will repeat but many will be new.

Ages: 4-6

Fees: \$96 (R) \$115 (N)

Hours/Dates: 10 a.m.-12:30 p.m.

[Jan. 11-25 \(Thursdays\)](#)

[Feb. 8-22 \(Thursdays\)](#)

[March 7-21 \(Thursdays\)](#)



Junior Farmers

Your child will be immersed in farm life in this after-school program. Activities include interacting with our farm animals, exploring the park's natural habitats, and creating crafts. Your child will take the animals on walks around the farm, see what's growing in the garden, and explore Bellevue's past through the historic buildings at Kelsey Creek Farm.

Ages: 7-9

Fees: \$78 (R) \$94 (N)

Hours/Dates: 2-4 p.m.

[Jan. 10-24 \(Wednesdays\)](#)

[Feb. 7-21 \(Wednesdays\)](#)

[March 6-20 \(Wednesdays\)](#)



Weekend Workshops

Veggies for Valentine's

Do you love farm animals? So do we! We'll celebrate Valentine's Day by making veggie treats for the farm animals and popcorn treats for the kids! Your child will meet our animals, make a Valentine card for an animal, and receive one in return! If you do not want your child to eat popcorn, please bring your own snack. Adult/child teams only, a team is one child and one adult.

Ages: 4-8

Fees: \$25 (R) \$30 (N)

Hours/Dates: 1-2 p.m.

[Feb. 11 \(Sunday\)](#)



St. Patrick's Celebration

Celebrate St. Patrick's Day at the farm with the animals! We'll dress up a pony in green decorations, go on a treasure hunt to look for leprechaun gold, and do a craft. Adult/child teams only, a team is one child and one adult.

Ages: 4-8

Fees: \$25 (R) \$30 (N)

Hours/Dates: 1-2 p.m.

[March 17 \(Sunday\)](#)



Grass to Butter:

An Introduction to Farm Science and a Tasty Snack

How does a farm actually work? Come meet our cows and see what's growing in our pastures. You'll learn how cows digest grass, when they produce milk, and what people can make with milk. Then we'll make butter with milk from a certified western Washington dairy and taste-test it with some yummy crackers. Adult/child teams only, a team is one child and one adult.

Ages: 4-8

Fees: \$25 (R) \$30 (N)

Hours/Dates: 1-2 p.m.

[March 31 \(Sunday\)](#)



Teen Programs

After School Teen Farm Volunteers

Assist Kelsey Creek Farm staff in providing daily care to our farm animals. Help prepare meals for the animals, clean their living quarters, assist with other farm chores, and help bring the animals back into the barn each day. Teens will learn responsible animal care, job skills, and independence while earning service hours for school.

Ages: 12-18

Fees: \$15 (R) \$18 (N)

Hours/Dates: 2-4:30 p.m

[Jan. 10-24 \(Wednesday\)](#)

[Feb. 7-21 \(Wednesday\)](#)

[March 6-20 \(Wednesday\)](#)



Saturday Morning Teen Farm Volunteers

Assist Kelsey Creek Farm staff in providing daily care to our farm animals. Help prepare meals for the animals, clean their living quarters, assist with other farm chores, and help bring the animals out to pasture for the day. Teens will learn responsible animal care, job skills, and independence while earning service hours for school.

Ages: 15-18

Fees: \$15 (R) \$18 (N)

Hours/Dates: 8:30 a.m.-12 p.m.

[Jan. 13-27 \(Saturday\)](#)

[Feb. 10-24 \(Saturday\)](#)

[March 9-23 \(Saturday\)](#)



Adult Programs

Adult Farm Volunteers

Assist Kelsey Creek Farm staff in providing daily care to our farm animals. Help staff bring the animals out to pasture, clean their living quarters, and prepare meals for the animals each day. Volunteers will learn about caring for livestock and about Bellevue's agricultural history while giving back to their community.

Ages: 18+

Fees: FREE

Hours/Dates: 8:30-10:30 a.m.

[Jan. 9-Feb. 20 \(Tuesday\)](#)

[Jan. 10-Feb. 21 \(Wednesday\)](#)

[March 5-April 16 \(Tuesday\)](#)

[March 6-April 17 \(Wednesday\)](#)



Mid-Winter Break Camps

Future Doctor Camp

Camp participants will role-play the key responsibilities of a doctor and learn about vital organs in the human body. These future doctors will learn how to use a stethoscope, blood pressure cuff, and reflex hammer. They will practice administering first aid, learn how pharmacists play a role in administering medications, and more!

Ages: 8-10

Fees: \$280 (R) \$336 (NR)

Hours/Dates: 9:15 a.m.-12:15 p.m.

[Feb. 20-23](#)

Future Veterinarian: Dog Camp

Camp participants will role-play the key responsibilities of a veterinarian and learn how to care for a dog. These future veterinarians will learn how to remove ticks, perform a nose-to-tail exam, understand proper animal nutrition and hydration, suture lacerations, and more!

Ages: 8-10

Fees: \$280 (R) \$336 (NR)

Hours/Dates: 1-4 p.m.

[Feb. 20-23](#)



Birthday Parties

Kelsey Creek Farm offers a variety of party packages to make your child's day special. All party packages are approximately two hours long. Each party begins with a guided tour and group activity led by a member of our farm staff. Activities and crafts vary based on party themes. The guided activity time is followed by a one-hour room rental for cake and presents. Room locations may vary, but all party locations are indoor and include:

- ◆ 3 preschool-height tables (6 feet long by 2.5 feet wide) with children's chairs
- ◆ A refrigerator/freezer and microwave
- ◆ Kitchen sink and trash cans
- ◆ A restroom with hand-washing soap and paper towels

Maximum capacity for all parties is 25 people (number includes adults and children) and has been set to respect facility codes, the safety and well-being of the animals, and to ensure guest enjoyment. Please note: animals available for interaction may change without warning based on individual animals' health and wellbeing.

Farm Birthday Party

Celebrate your child's birthday with a visit to our historic farm. Make memories meeting farm animal friends. Birthday party package includes an approximately 45-minute farm tour and farm-themed craft, followed by one hour of room rental.

Ages: 2-11

Fees: \$350 (R) \$420 (N)

Bunny Birthday Party

Celebrate your child's birthday by visiting the farm and meeting our friendly bunny. Enjoy a farm tour, a bunny craft, and extra time visiting the bunnies. Birthday party package includes approximately 45-minute farm tour and bunny themed craft, followed by one hour of room rental.

Ages: 2-11

Fees: \$350 (R) \$420 (N)



Pony Birthday Party

Celebrate your child's birthday by visiting the farm and meeting one of our ponies. Enjoy a farm tour, pony craft, and special time with the birthday pony. Birthday party package includes an approximately 45-minute farm tour and pony-themed craft, followed by one hour of room rental. Please note: this party does NOT include a pony ride.

Ages: 4-11

Fees: \$350 (R \$420 (N))



Tours

Experience the farm with a tour designed specifically for groups. Tour themes vary by season. Tours are available weekdays and are approximately 45 minutes long.

Ages: most tours appropriate for children ages 2+ (see below for exceptions)

Kids on the Farm Group Tour

Available year-round

Explore our historic dairy farm with hands-on fun as you meet our farm animals. Learn interesting animal facts and local history as you travel back in time to when Bellevue was mostly farmland and forest. Go into the animal barn to see where the animals sleep at night and work on barn "chores" with child-sized pails and rakes.

Fuzzy Farm Friends Group Tour

Available year-round

Have you ever wondered where yarn and wool sweaters come from? How does a sheep give us a pair of warm wool socks? Meet the Kelsey Creek Farm sheep and practice the skill of carding wool all while learning about sheep and fiber processing. Children will create a fuzzy sheep craft to take home.



Pioneers on the Farm Group Tour

Available year-round (recommended for ages 4+)

Imagine life in Bellevue in the 1880s. Children spend time looking around the Fraser cabin, built in 1888, and learning about what life was like for the pioneers when they arrived in the Bellevue area. Practice pioneer living history skills and go on a farm walk to learn how some of our farm animals would have been used by the pioneers.

Springtime in the Barnyard Group Tour

Available May only

Welcome springtime in the barnyard with a hands-on tour among our favorite animals. Learn about their care, then get dirty in the garden planting and watering seeds.

Fall on the Farm Group Tour

Available October only

Experience harvest season on the farm! Visit with some of our friendly farm animals and watch them eat a pumpkin treat. Then finish up by enjoying a story in our indoor off-the-vine pumpkin patch. Pumpkins are available for purchase for an additional fee.



Rentals

For more rental information including pricing and room specs, visit BellevueWA.gov/kelsey.

Outdoor Rentals

Kelsey Creek Farm Picnic Shelter

Rent Kelsey Creek Farm's Picnic Shelter for your next event! This covered picnic shelter has a capacity of 75 people and includes 6 picnic tables and 2 charcoal grills. To reserve, send an email with requested dates and times to kelseycreekfarm@bellevuewa.gov



Indoor Rentals

Looking for space to host a party, class, or meeting? Kelsey Creek Farm features several indoor rental spaces including a farm house with a 760 square-foot community room and kitchen space as well as a 900 square-foot room in the historic 1943 barn. The unique farm setting makes these spaces perfect for memorable events.

Both rental spaces can be reserved seven days a week, and these spaces easily accommodate groups large or small with rooms for groups from 10 to 30 people. To reserve, send an email with requested dates and times to kelseycreekfarm@bellevuewa.gov

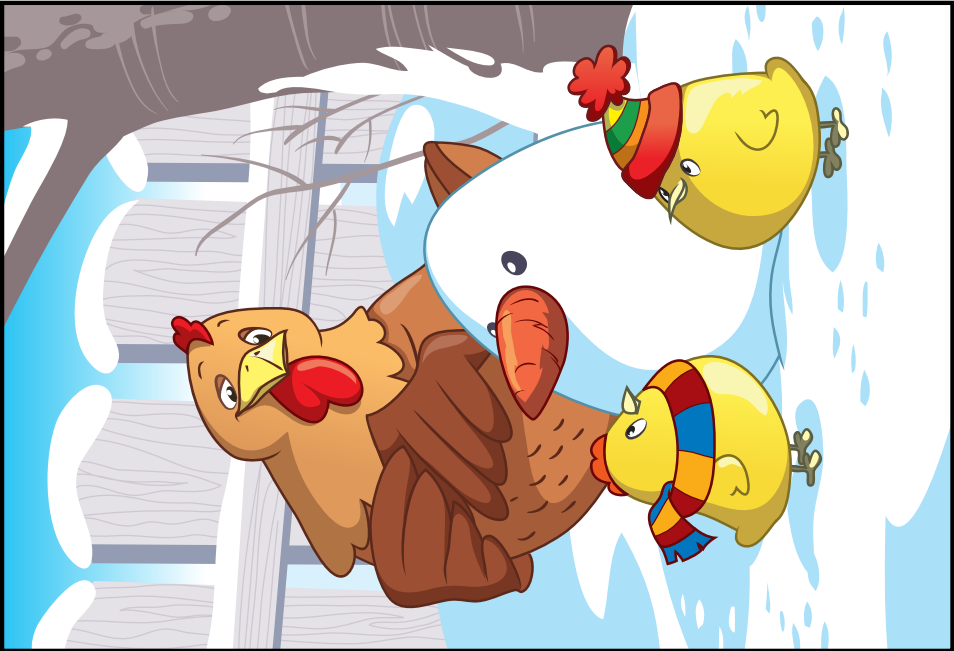
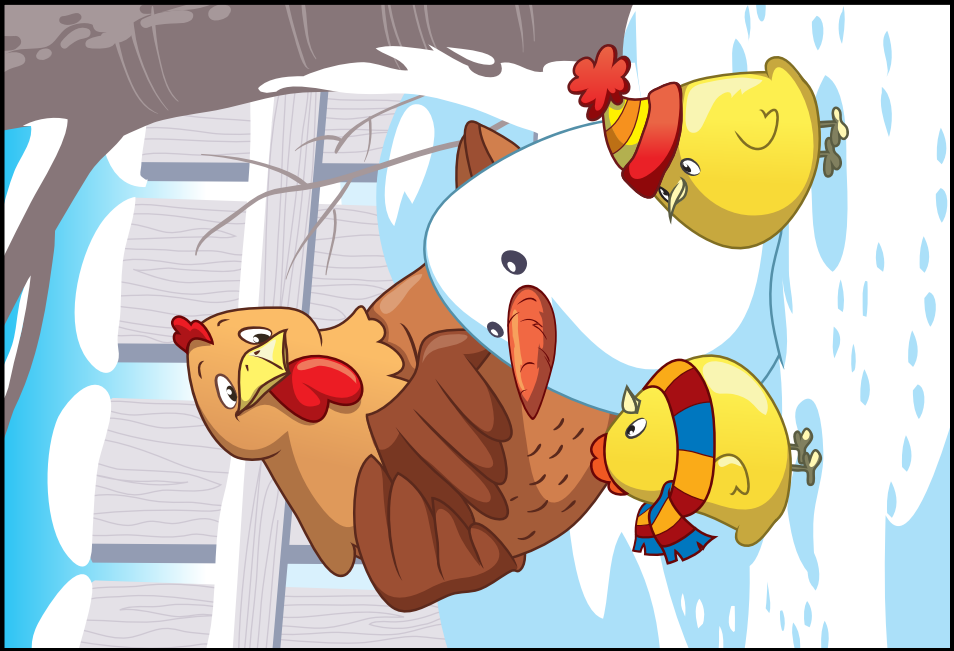
Kelsey Creek Farm Room (Education Barn)



Kelsey Creek Farm House



Find 10 differences





FARM HISTORY

The farm's history began in 1921, when the Duey Family rented 190 acres and began delivering cream and butter stamped with the name Twin Valley Dairy. In August of 1933 the original barn burned. Mr. Duey, a skilled carpenter, along with some hired hands, rebuilt the barn in two weeks. Today, this barn is the smaller of the two barns and is called the Animal Barn. Mr. Duey also built the Red Barn, originally used as a milk house.

The second dairy barn was built in 1943–44 by Mr. Michaels, the new owner, (this is the north barn now known as the Education Barn) and the dairy herd was increased in size. After the end of WWII, he sold the farmstead to Ray and Nettie Fisher. The Fishers phased out the dairy operation and began raising Hereford beef cattle. They built the current farmhouse in 1954 and moved to live on the property.

In 1968 neighbors to the farm began a movement to petition the Bellevue City Council to purchase the property and secure it as a public park. The neighbors' petition succeeded, and the city negotiated with the Fisher family to purchase the 80 acres, including the farmhouse, barns and outbuildings. The Fishers sold their farm property to the City at a price much reduced from what they knew that they could get from developers. They did so because they believed in preserving the beauty and legacy of the agricultural buildings and the land.

In 1972 the oldest barn was modified to house an assortment of farm animals for public viewing. The other, larger barn, commonly referred to as the Education Barn, was remodeled inside and used to accommodate a variety of community programs, including children's day camps, art classes, and farm-themed classes, to name just a few.

REGISTER ONLINE!

register.bellevuewa.gov

Scholarships available for
many programs.

(R) RESIDENT / (N) NON-RESIDENT



Kelsey Creek Farm
410 130th PI SE | Bellevue, WA 98005
425-452-7688
KelseyCreekFarm@bellevuewa.gov



For alternate formats, interpreters, or reasonable modification requests please phone at least 48 hours in advance 425-452-4253 (voice) or email hcox@bellevuewa.gov. For complaints regarding modifications, contact the City of Bellevue ADA, Title VI, and Equal Opportunity Officer at ADATitleVI@bellevuewa.gov.