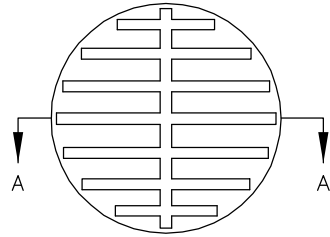
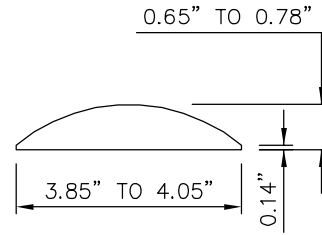


TOP VIEW

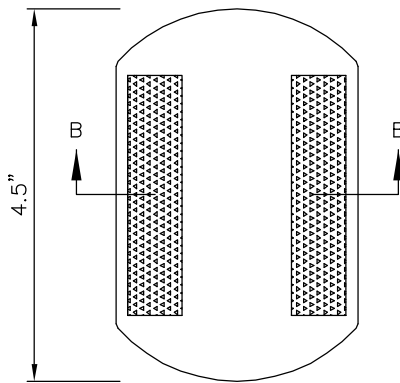


BOTTOM VIEW EXAMPLE
(SEE NOTE 2)



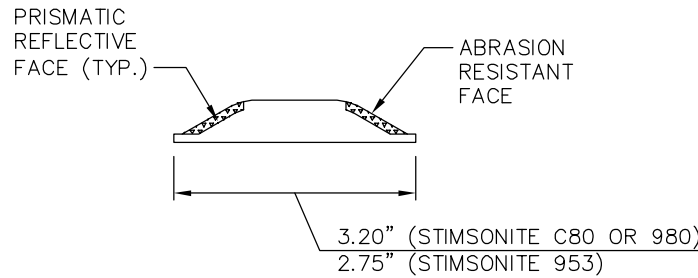
SECTION A-A

TYPE 1



PLAN

← DIRECTION OF TRAFFIC



SECTION B-B

TYPE 2

NOTES:

1. RAISED PAVEMENT MARKER TYPE 1 SHALL BE ALPINE PRODUCTS MODEL ANR-Y1 OR ANR-W1, STIMSONITE MODEL B10 OR APPROVED EQUAL. MARKERS SHALL BE MOLDED OF A HIGH IMPACT, RECYCLED ACRYLONITRILE BUTADIENE STYRENE (ABS), CONFORMING TO ASTM SPEC DI 78868.
2. TYPE 1 MARKER BOTTOM SHALL ALLOW UPWARD FLOW OF ADHESIVE AND VENTING TO PREVENT AIR ENTRAPMENT.
3. RAISED PAVEMENT MARKER TYPE 2 SHALL BE ENNIS FLINT STIMSONITE MODEL C80, 980, OR 953.
4. SUBSTITUTE PAVEMENT MARKERS SHALL NOT BE ACCEPTED WITHOUT WRITTEN APPROVAL BY THE ENGINEER, PRIOR TO INSTALLATION.
5. ALL MARKERS INSTALLED ON CEMENT CONCRETE PAVEMENT SHALL BE INSTALLED WITH AN EAS-60 TWO PART EPOXY. SEE STD. DWG. CH-300-1.
6. ALL MARKERS INSTALLED ON HMA PAVEMENTS SHALL BE INSTALLED WITH BITUMINOUS ADHESIVE, CRAFCO STANDARD PAVEMENT MARKER ADHESIVE. SEE STD. DWG. CH-300-1.



RAISED PAVEMENT MARKER DETAILS

DRAWING NUMBER	CH-120-1
SCALE	NONE
REVISION DATE	2/24
DEPARTMENT	TRANS