



# Comprehensive Plan Periodic Update

Complete Draft Info Session

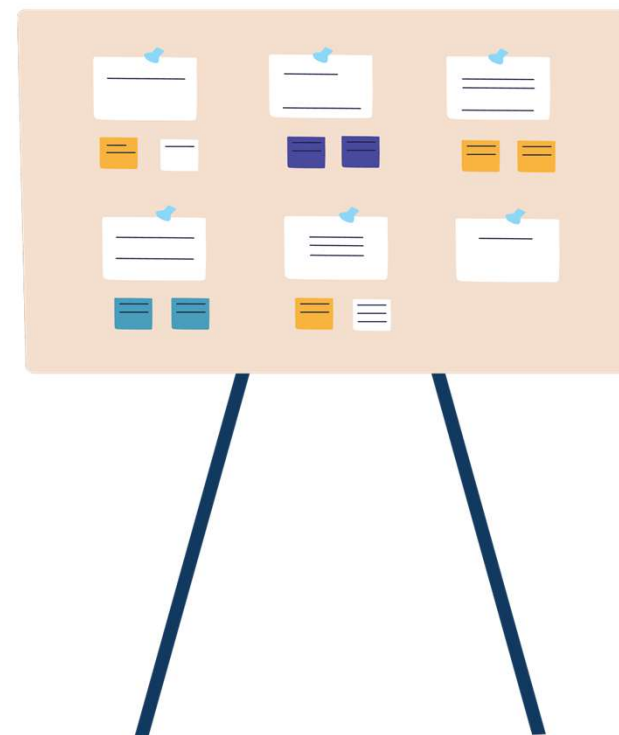
May 6, 2024

**BELLEVUE** 2044  
COMPREHENSIVE PLAN  
Building A Livable City for All



# Agenda

1. Overview of Engagement
2. What We Heard – Broad Themes
3. What We Heard – Policy Feedback
4. How Feedback Informed the Final Draft
5. What Happens Next – How to Stay Involved
6. Q+A



# Key Issue Areas

| EQUITY   | CLIMATE  | HOUSING  |
|--|--|--|
| <ul style="list-style-type: none"> <li>Promote safe, healthy, equitable communities</li> <li>Address historic inequities in access to home ownership</li> <li>Ensure all people can attain the resources and opportunities to improve their quality of life</li> </ul> | <ul style="list-style-type: none"> <li>Substantially reduce emissions</li> <li>Enhance urban tree canopy</li> <li>Support climate resilience</li> <li>Address impacts of climate change on vulnerable populations</li> </ul> | <ul style="list-style-type: none"> <li>Plan for a range of housing types including duplexes and other middle density types</li> <li>Address the need for housing that is affordable to low-income households</li> <li>Expand range and amount of housing near transit</li> </ul> |



# Engagement by the Numbers



Youth Workshops



Community Deep Dives



Community Tabling

**7,000+**  
 individuals engaged.

**3,300**  
 respondents to the Vision Questionnaire that was mailed to all 64,000 Bellevue households.

**1,800**  
 individuals provided feedback via the city's online engagement hub.

**1,110**  
 Bellevue residents responded to the city's statistically valid survey.

**567**  
 people responded to Middle Housing Questionnaire.

**62**  
 people shared their housing stories.

**228**  
 Bellevue residents took part in Missing Middle Housing: Tell Your City a regional collaboration between Eastside cities and Community Based Organizations.

**78**  
 events including in-person and virtual presentations, community workshops, focus group conversations, tabling events, meetings with the Bellevue 2044 Strategy Team, and more.

**50**  
 representatives from the business sector, developers, non-profits, neighborhood leaders, institutional partners, and advocacy groups participated in the Bellevue 2044 Strategy Team.

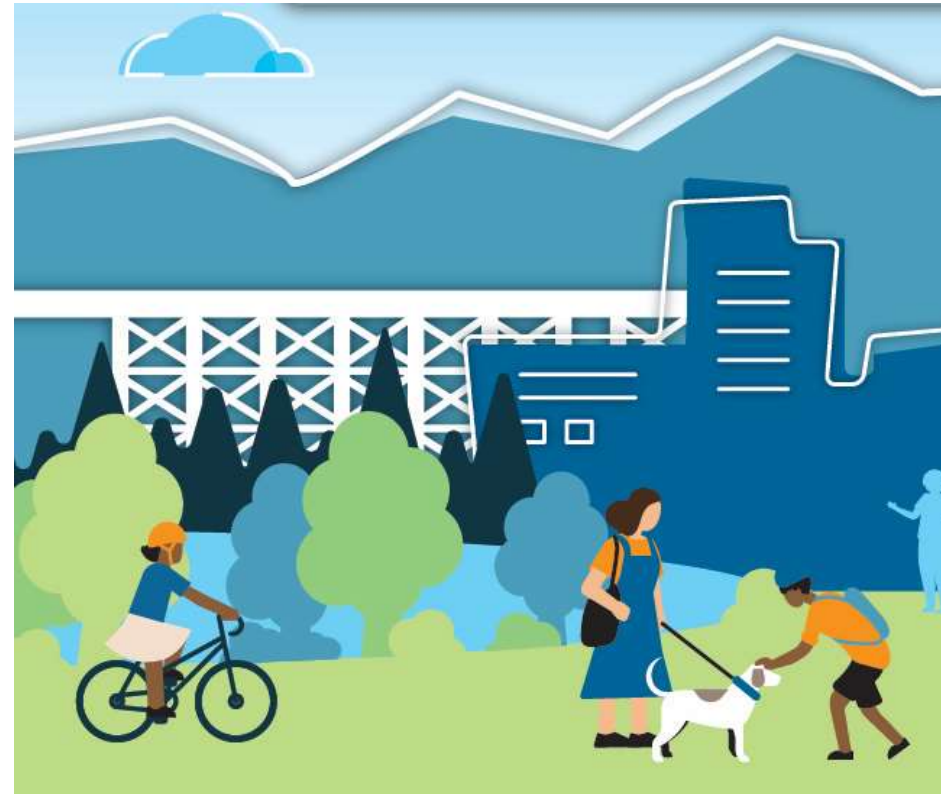
# Broad Themes: Housing

- Affordability consistently the top concern
- Desire for more homeownership opportunities at all income levels
- Desire for more housing options – duplexes, cottage homes, small apartments, that can meet different needs.
- Senior housing, middle-income housing, family sized housing.



# Broad Themes: Climate & Environment

- Reducing carbon emissions is a priority
- Preserving and enhancing the tree canopy
- Balancing growth with need for open space and trees is a challenge
- Mixed-Use & Neighborhood Centers are an exciting idea with many potential benefits
  - Increased walkability to retail and services
  - Possibility of integrating with parks & natural areas
  - More sustainable neighborhoods overall



## Broad Themes: Placemaking

- Strong interest creating more areas focused on activity, arts & entertainment.
- Desire for more gathering spots for people to connect
- Support public spaces and art that celebrate different cultures and traditions
- Enhance existing and create new neighborhood centers that support local businesses and provide amenities.



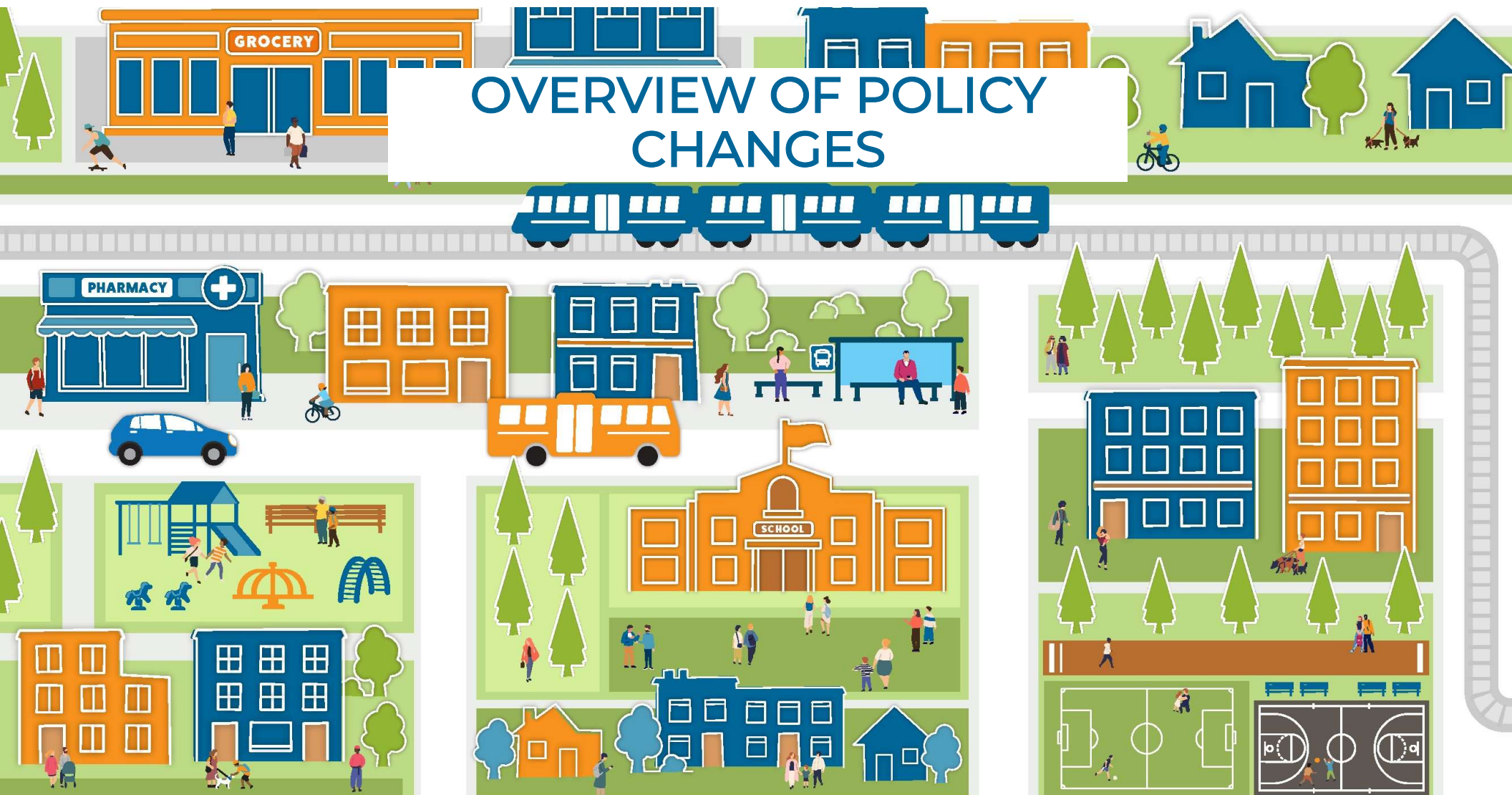
# Broad Themes: Access & Mobility

- People are interested in alternative modes but need more infrastructure and more transit frequency/access
- Focus on connection to destinations – Downtown, shopping/retail centers
- Traffic is a big concern
- Cars are not going away, people will still need to drive for some trips - groceries, taking kids to activities, etc.





# OVERVIEW OF POLICY CHANGES

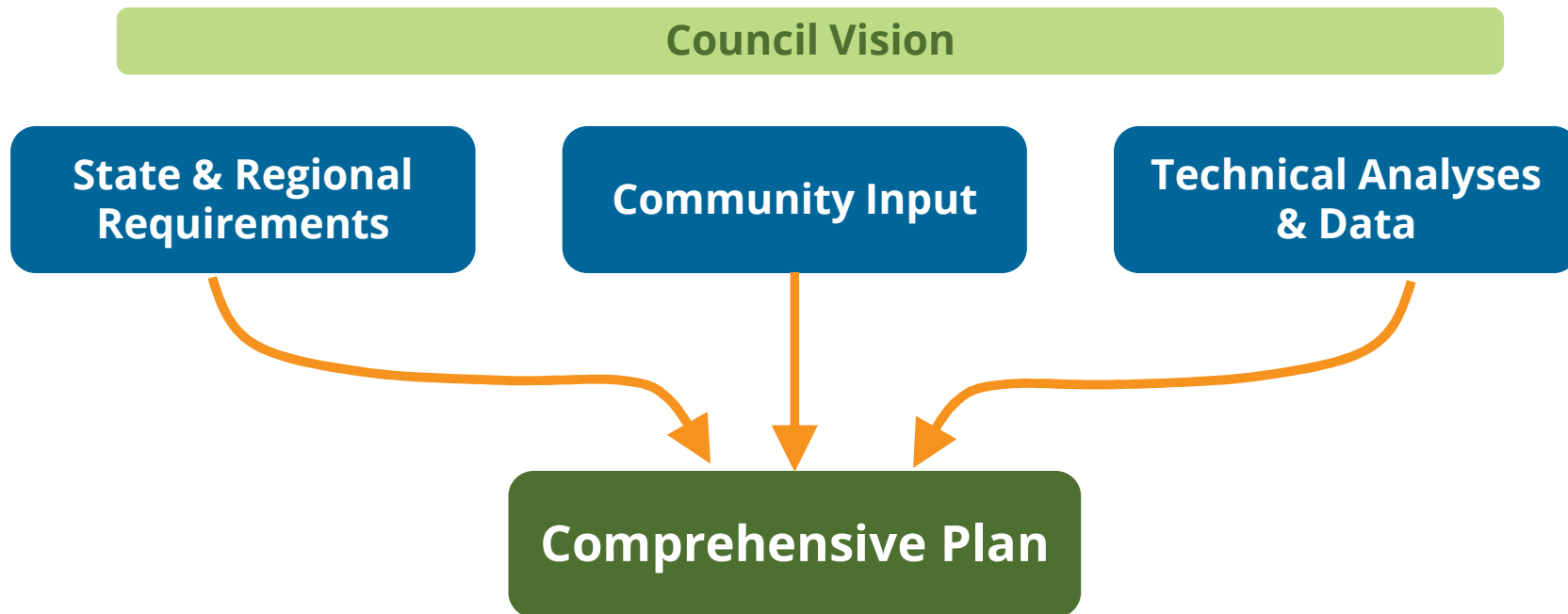


# Draft Policy Review Period

## January 15 – February 15

- In-Person Open House
- In-Person Community Conversation
- Online questionnaires
- Over 400 participants

# Where Policy Direction Comes From



# Addressing Comments

- Aligned with Council direction
- Complies with State Law
- Is it best addressed through Comprehensive Plan or in a Functional Plan?
- Is this a new idea that has not been considered?
- Is there a significant amount of community support for this?
- Does this advance equity in Bellevue?

# Focus on Safety

## WHAT WE HEARD:

- Ensure all transportation modes are safe, including pedestrian facilities
- More focus on crime prevention

## HOW IT WAS ADDRESSED:

- Proposed policies to address safety for active transportation modes include LU-15, LU-39, TR-71, TR-72, TR-99, TR-105. **Modified TR-66** to specify safe pedestrian and bicycle access to transit.
- Specific projects are **best addressed through the Transportation Facilities Plan or Neighborhood Enhancement Project program.**
- Proposed new section in the Neighborhoods element on safety. Crime prevention activities and techniques are **best addressed in the Police Department Strategic Plan**

# Ensure Housing Options for All

## WHAT WE HEARD:

- Desire for different regulations or permitting processes
- Use of universal design
- Retain the status quo in areas that are currently primarily single-family
- Prohibit housing close to freeways

## HOW IT WAS ADDRESSED:

- Regulations of zones and specific uses **addressed through the Land Use Code.**
- **Modified HO-63 and HO-64** to explicitly address housing needs of older adults separately from more general accessibility in housing.
- **Not aligned with new state law** requires cities like Bellevue to allow duplexes and triplexes, up to 4 units, anywhere that is usually single-family.
- **Updated LU-44** to consult with the community to prevent, mitigate and remediate harmful environmental pollutants.

# More Support for the Environment and Trees

## WHAT WE HEARD:

- Native and climate change resilient plantings
- Tree retention during development
- Specific actions to combat climate change

## HOW IT WAS ADDRESSED:

- Proposed policies on native plantings: UD-9, UD-13, CL-64, CL-78, CL-89, CL-91. **Modified CL-50** to include enhancements to native vegetation to promote soil stability.
- Proposed new section on Urban Forestry in Climate and Environment element. **Added LU-40** about tree retention during development of parcels over 10 acres.
- Climate Change mitigation strategies are **best addressed in functional plans**, particularly Environmental Sustainability Implementation Plan.

# Policies Promoting Equity & Inclusion

## WHAT WE HEARD:

- Address unique needs of senior/older adult activities and access
- Better support for small businesses at risk of displacement
- Recognition of tribal rights and better coordination

## HOW IT WAS ADDRESSED:

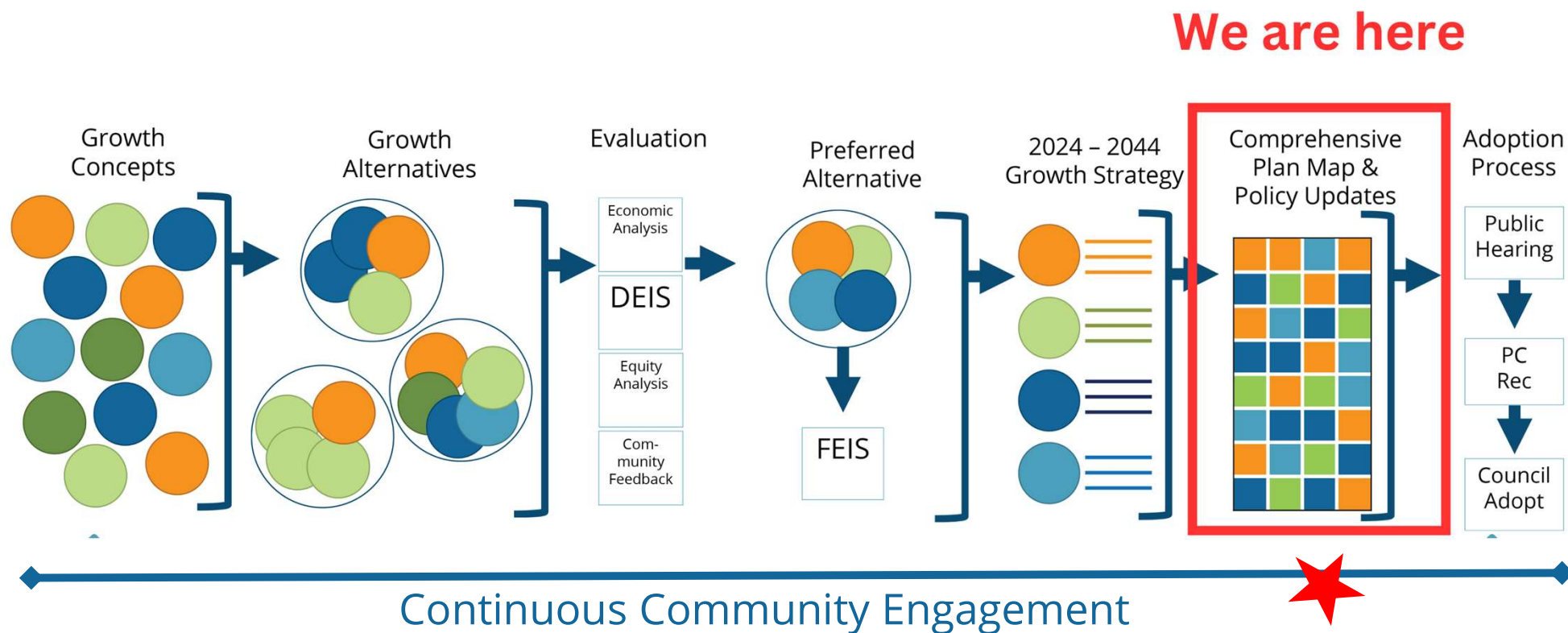
- **Updated HO-63** to focus on housing needs of older adults.
- **Updated policy HO-1 and HO-20** to include all ages and religions in making Bellevue a welcoming, safe and just community.
- Specific activity programming is **best address through functional plans** such as the Parks and Recreation Plan
- **Added ED-40** to identify areas at risk of business displacement and work to mitigate those risks.
- Updates to several policies (CL-1, CL-6, CL-8, CL-10, CL-96), plus **added CL-21** to protect culturally modified trees



# STAY ENGAGED



# Planning Process



# Upcoming Opportunities

Comments should go directly to Planning Commission

- **Email**

- [planningcommission@bellevuewa.gov](mailto:planningcommission@bellevuewa.gov)

- **Meetings**

- May 8 | 6:30 p.m.
- May 22 | 6:30 p.m.

- **Tentative Public Hearing Dates**

- June 20 | 6:30 p.m.
- June 26 | 6:30 p.m.

# Questions

If you have comments on policies, please direct to Planning Commission

We can take questions related to:

- Policies that may or may not be in Comp Plan
- Process