

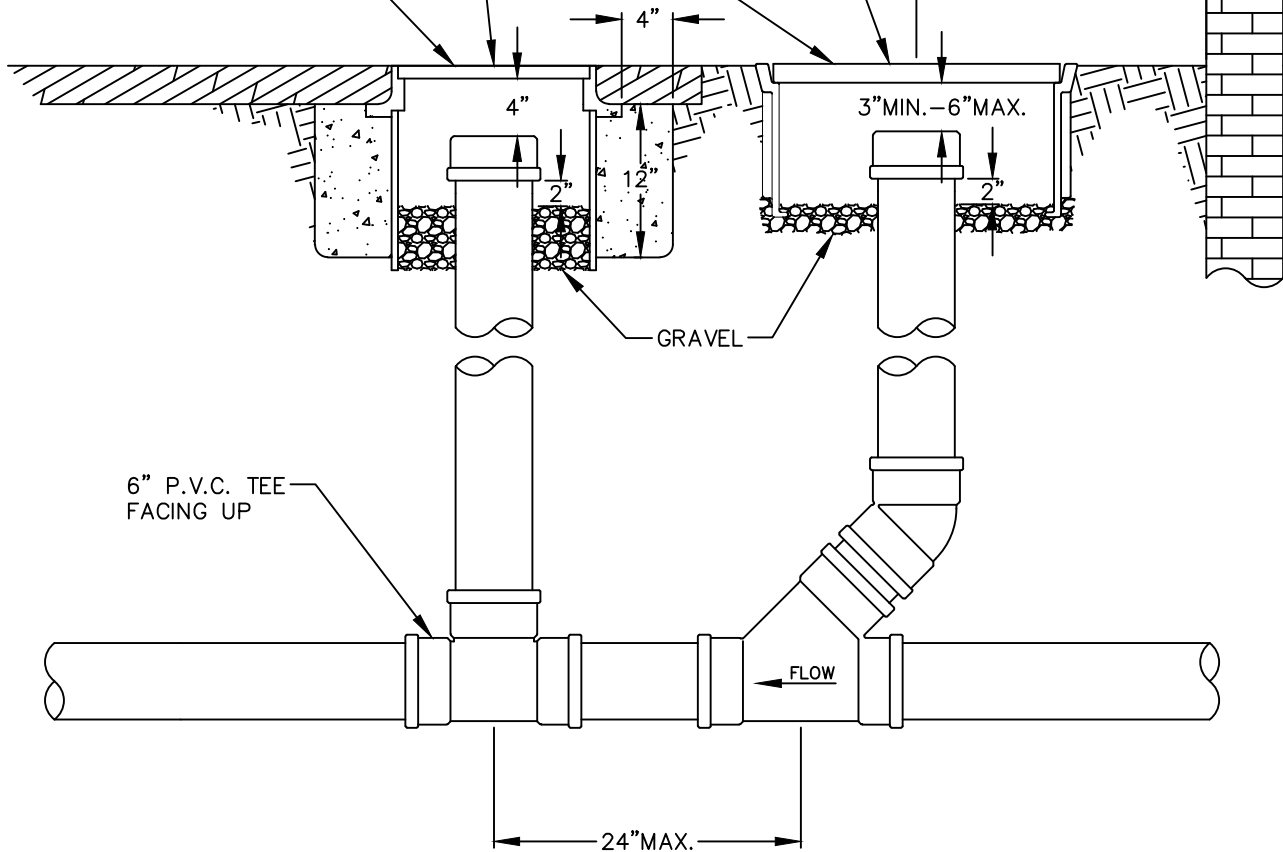
RESTAURANT, BAKERY OR OTHER F.O.G. CONTRIBUTOR
WITHOUT AN EXTERIOR GREASE INTERCEPTOR

INSTALL CLEANOUT AND SAMPLING
TEE TO GRADE PER STANDARD
DETAIL S-16

SEE NOTE 3

SEE NOTE 3

36" MIN.



NOTES:

1. ONLY FOR USE ON PROPERTIES THAT DO NOT HAVE AN EXTERIOR GREASE INTERCEPTOR.
2. INSTALL SAMPLING TEE ON EXISTING OR NEW SIDE SEWER.
3. FOR PAVED AREAS USE 14" BOLT-LOCKING RING AND COVER EQUAL TO INLAND FOUNDRY NUMBER 209 OR 210. FOR UNPAVED AREAS USE MID-STATES PLASTIC BOX MODEL MSBCF-1118-18XL OR EQUAL. THE COVER FOR THE PLASTIC BOX SHALL BE DUCTILE IRON AND READ "SEWER", OR BE BLANK (NO LABEL).



City of
Bellevue

SEWER UTILITIES

TITLE

SAMPLING TEE