

# KELSEY CREEK FARM

Promoting learning opportunities  
in a farm environment



**APRIL-JUNE 2023**



**Kelsey Creek Farm** provides the community an opportunity to cross the threshold of urban living into an agricultural experience, while maintaining the historic integrity of the farm, through interpretive displays and education. Our programs foster creativity and active play. The Farm's two historical barns sit prominently on the crest of a hill. There is no entrance fee; however, we welcome and appreciate your donations.

When visiting any of Bellevue's parks, all dogs and other pets must be kept on a leash. Out of consideration for our farm animals' health and wellbeing, please observe all posted signs prohibiting pets from the barnyard.

**FARM ANIMALS IN THE PASTURES  
DAILY FROM 9 a.m.-3 p.m.  
365 DAYS A YEAR  
(R) RESIDENT / (N) NON-RESIDENT**

# Weekday Classes

## Adult/Child

### Little Farmers

Join us for hands-on fun in the barn and barnyard with your 2-3-year-old. Classes will feature various farm animals, seasonal themes, barn chores, feeding and petting farm animals, crafts, parallel play, and taking a pony ride - all the fun is right here! Children team up with a parent/adult to actively participate in this class. Come dressed to play inside and outside and get dirty! Each session includes a pony ride. Siblings under two are welcome in front or back packs. Each session has different activities, animals and some activities will overlap but many will be new.

**Ages: 2-3**

**Fees: \$78 (R) / \$94 (N)**

**Hours/Dates: 10-11:30 a.m.**

#### 3-Week Sessions

[Apr 3-17 \(Monday\)](#)

[Apr 4-18 \(Tuesday\)](#)

[Apr 5-19 \(Wednesday\)](#)

[Apr 6-20 \(Thursday\)](#)

[May 8-22 \(Monday\)](#)

[May 9-23 \(Tuesday\)](#)

[May 10-24 \(Wednesday\)](#)

[May 11-25 \(Thursday\)](#)

**Fees: \$55 (R) / \$66 (N)**

**Hours/Dates: 10-11:30 a.m.**

#### 2-Week Sessions

[June 5-12 \(Monday\)](#)

[June 6-13 \(Tuesday\)](#)

[June 7-14 \(Wednesday\)](#)

[June 8-15 \(Thursday\)](#)



# Fun on the Farm

Join Kandi & Beth for a fun time as an adult/child team. Each week we will have a different theme enhanced with sensory activities based on a farm topic or animal. We will play, create and explore the farm. There will even be time to pet a chicken or hug a bunny. Each session includes a pony ride. Siblings under two are welcome in front or back packs. Each session has different activities, animals and some activities will overlap but many will be new.

**Ages: 2-5**

**Fees: \$90 (R) / \$108 (N)**

**Hours/Dates: 10-11:30 a.m.**

**4-Week Session**

[Apr 5-26 \(Wednesday\)](#)

**Fees: \$110 (R) / \$132 (N)**

**Hours/Dates: 10-11:30 a.m.**

**5-Week Session**

[May 3-31 \(Wednesday\)](#)



## Private Trail Rides

Your child will get to ride one of our adorable ponies on a private ride through the barnyard or trails at Kelsey Creek Farm. Your child will learn the basics of horseback riding and experience the farm in a whole new way. Parents/guardians may choose to walk along, but no strollers allowed.

**Ages: 2-4**

**Fees: \$20 (R) / \$24 (N)**

**Hours/Dates:**

<b>May 9 (Tuesday)</b>	<u><a href="#">1:30-1:45</a></u>	<u><a href="#">1:45-2</a></u>	<u><a href="#">2:30-2:45</a></u>	<u><a href="#">2:45-3</a></u>
<b>May 11 (Thursday)</b>	<u><a href="#">1:30-1:45</a></u>	<u><a href="#">1:45-2</a></u>	<u><a href="#">2:30-2:45</a></u>	<u><a href="#">2:45-3</a></u>
<b>May 23 (Tuesday)</b>	<u><a href="#">1:30-1:45</a></u>	<u><a href="#">1:45-2</a></u>	<u><a href="#">2:30-2:45</a></u>	<u><a href="#">2:45-3</a></u>
<b>May 25 (Thursday)</b>	<u><a href="#">1:30-1:45</a></u>	<u><a href="#">1:45-2</a></u>	<u><a href="#">2:30-2:45</a></u>	<u><a href="#">2:45-3</a></u>
<b>May 30 (Tuesday)</b>	<u><a href="#">1:30-1:45</a></u>	<u><a href="#">1:45-2</a></u>	<u><a href="#">2:30-2:45</a></u>	<u><a href="#">2:45-3</a></u>
<b>June 1 (Thursday)</b>	<u><a href="#">1:30-1:45</a></u>	<u><a href="#">1:45-2</a></u>	<u><a href="#">2:30-2:45</a></u>	<u><a href="#">2:45-3</a></u>
<b>June 6 (Tuesday)</b>	<u><a href="#">1:30-1:45</a></u>	<u><a href="#">1:45-2</a></u>	<u><a href="#">2:30-2:45</a></u>	<u><a href="#">2:45-3</a></u>
<b>June 8 (Thursday)</b>	<u><a href="#">1:30-1:45</a></u>	<u><a href="#">1:45-2</a></u>	<u><a href="#">2:30-2:45</a></u>	<u><a href="#">2:45-3</a></u>
<b>June 13 (Tuesday)</b>	<u><a href="#">1:30-1:45</a></u>	<u><a href="#">1:45-2</a></u>	<u><a href="#">2:30-2:45</a></u>	<u><a href="#">2:45-3</a></u>
<b>June 15 (Thursday)</b>	<u><a href="#">1:30-1:45</a></u>	<u><a href="#">1:45-2</a></u>	<u><a href="#">2:30-2:45</a></u>	<u><a href="#">2:45-3</a></u>



## Little Scientists

Join us for science experiments on the farm! You and your child will explore chemistry, biology, and animal science with interactive experiments. Outside, we will get to interact with one of our farm animals each week. This program includes a pony ride. Adult/child teams only.

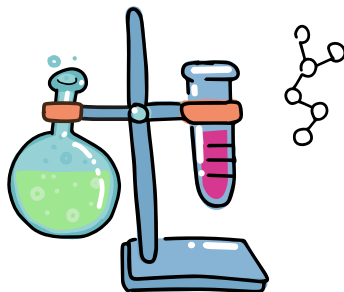
**Ages: 2-3**

**Fees: \$78 (R) / \$94 (N)**

**Hours/Dates: 10-11:30 a.m.**

[Apr 7-21 \(Friday\)](#)

[May 12-26 \(Friday\)](#)



## Little Pioneers

Come to the farm with your little one and learn about pioneer history! Each week, your child will learn about different aspects of pioneer life and meet some of the animals on the farm. This program includes a pony ride. Adult/child teams only.

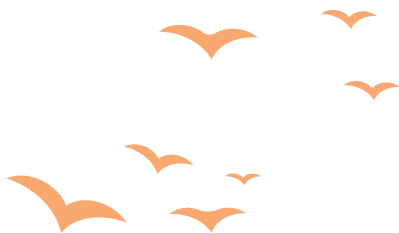
**Ages: 2-3**

**Fees: \$78 (R) / \$94 (N)**

**Hours/Dates: 10-11:30 a.m.**

[Apr 4-18 \(Tuesday\)](#)

[May 9-23 \(Tuesday\)](#)



# Drop Off Programs

## Farm Explorers

Join us for a farm adventure featuring animal care, barn chores, a pony ride, and baking yummy snacks. This drop-off program is designed for the independent 4-6-year-old. Curriculum is integrated with seasonal themes, arts and crafts, stories and animal interactions. This program includes a pony ride. Children must be potty trained.

**Ages: 4-6**

**Fees: \$106 (R) / 127 (N)**

**Hours/Dates: 10 a.m.-12:30 p.m.**

**3-Week Sessions**

[Apr 4-18 \(Tuesday\)](#)

[Apr 6-20 \(Thursday\)](#)

[May 9-23 \(Tuesday\)](#)

[May 11-25 \(Thursday\)](#)

**Fees: \$74 (R) / \$89 (N)**

**Hours/Dates: 10 a.m.-12:30 p.m.**

**2-Week Sessions**

[June 6-13 \(Tuesday\)](#)

[June 8-15 \(Thursday\)](#)



## Science Explorers

Come to the farm and have some fun with biology and chemistry! In this drop-off program, children will get to interact with a farm animal while learning about what they eat and why. We will take a nature walk to find mushrooms and native plants. This class is designed for the independent 4-6 year old. Children must be potty trained. This program includes a pony ride.

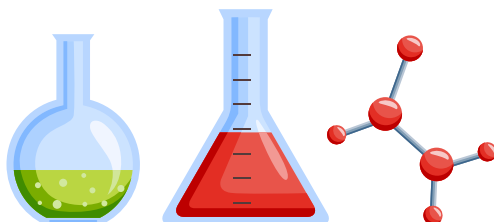
**Ages: 4-6**

**Fees: \$106 (R) / \$127 (N)**

**Hours/Dates: 10 a.m.-12:30 p.m.**

[Apr 7-21 \(Friday\)](#)

[May 12-26 \(Friday\)](#)



## Pioneer Explorers

Come and learn about pioneer history on the farm at this drop off program for the independent 4-6 year old! Each week, your child will learn about different aspects of pioneer life, and meet some of the animals on the farm. This program includes a pony ride.

**Ages: 4-6**

**Fees: \$106 (R) / \$127 (N)**

**Hours/Dates: 10 a.m.-12:30 p.m.**

[Apr 5-19 \(Wednesday\)](#)

[May 10-24 \(Wednesday\)](#)

## Elementary Fun on the Farm: Fiber Art

Join Beth & Kandi for a fun time on the farm after school on Wednesdays. The month of April will be fiber focused as we talk about different fiber animals, participate in fiber activities, and prepare for Sheep Shearing on the farm! \$15 supply fee payable to the instructor on the first class.

**Ages: 7-10**

**Fees: \$59 (R) / \$71 (N)**

**Hours/Dates: 2-4 p.m.**

[Apr 5-26 \(Wednesday\)](#)

## Elementary Fun on the Farm: Cake Decorating

Join Beth & Kandi for a fun time on the farm after school on Wednesdays. The month of May is the time to learn all about cupcake and cake decorating and baking. Each week we will bake or decorate and take home a beautiful creation. Five weeks of fun in May! We will have farm walks and animal viewing to stimulate creativity. \$25 supply fee payable to the instructor on the first day of class.

**Ages: 7-10**

**Fees: \$100 (R) / \$120 (N)**

**Hours/Dates: 2-4 p.m.**

[May 3-31 \(Wednesday\)](#)



## Farm School

Your child will be immersed in farm life in this after-school drop off program. Activities include interacting with our farm animals, exploring the park's natural habitats, and creating crafts. Your child will take the animals on walks around the farm, see what's growing in the garden, and explore Bellevue's past through the historic buildings at Kelsey Creek Farm.

**Ages: 7-9**

**Fees: \$78 (R) / \$94 (N)**

**Hours/Dates: 2-4 p.m.**

[Apr 5-19 \(Wednesday\)](#)

[May 10-24 \(Wednesday\)](#)



## Young Scientists

Join us for science on the farm! Each day we will focus on a different subject and meet a different animal. We will learn about nature, chemistry, biology, and animal science. This is a drop off class.

**Ages: 7-10**

**Fees: \$78 (R) / \$94 (N)**

**Hours/Dates: 2-4 p.m.**

[Apr 5-19 \(Wednesday\)](#)

[May 10-24 \(Wednesday\)](#)





# Weekend Workshops

## Spring Eggstravaganza

Come to Kelsey Creek for a fun morning on the farm with our lovable farm animals and learn all about eggs. Children will get to collect eggs from our chicken coops and compare chicken, duck, and goose eggs. They will also pet a bunny, pet a chicken, and go on an egg hunt! Adult/child teams only.

**Ages: 2-3**

**Fees: \$25 (R) / \$30 (N)**

**Hours/Dates: 11 a.m.-noon**

[Apr 8 \(Saturday\)](#)



**Ages: 4-7**

**Fees: \$25 (R) / \$30 (N)**

**Hours/Dates: 9:30-10:30 a.m.**

[Apr 8 \(Saturday\)](#)

## Spring Around the World

How is spring celebrated in different parts of the world? We'll investigate what spring is and when it happens, learn about spring traditions from different parts of the world, check out signs of spring on the farm, and make spring-themed crafts. Adult/child teams only.

**Ages: 2-3**

**Fees: \$25 (R) / \$30 (N)**

**Hours/Dates: 11 a.m.-noon**

[Apr 16 \(Sunday\)](#)

**Ages: 4-7**

**Fees: \$25 (R) / \$30 (N)**

**Hours/Dates: 9:30-10:30 a.m.**

[Apr 16 \(Sunday\)](#)



## Busy Beavers

Beavers are busy in the creeks at Kelsey Creek Farm and you can come learn about them! Your child will help us build an outdoor beaver pond diorama to learn all about these aquatic engineers. Then we'll each create a multi-media beaver scene to take home. This is an adult/child class.

**Ages: 4-8**

**Fees: \$25 (R) / \$30 (N)**

**Hours/Dates: 1-2 p.m.**

[Apr 16 \(Sunday\)](#)

## Mother's Day on the Farm

Join us with your child for a fun Mother's Day activity at Kelsey Creek Farm. You and your child will get to feed treats to our farm animals and take the goats on a walk. Then your child will help us prepare a fun Mother's Day surprise! This is an adult/child class.

**Ages: 4-8**

**Fees: \$25 (R) / \$30 (N)**

**Hours/Dates: 1-2 p.m.**

[May 14 \(Sunday\)](#)

## Log Cabin Open House

Visitors of all ages are welcome to join us for this free, drop-in event to explore Kelsey Creek Farm's log cabin, which was built in 1888. Children can participate in a variety of free pioneer activities, including grinding wheat, churning butter, and playing with bread dough. We will have antique logging and farming implements from the 1880s on display, including a variety of axes, farm implements, and other tools. You can watch a wool spinning demonstration and try your hand at carding wool. Adults can take a deeper dive into the history of logging and farming on the Eastside with our farm's passionate historian. Registration is not required.

**Ages: All ages welcome**

**Fees: Free**

**Hours/Dates: 1-3 p.m.**

[May 28 \(Sunday\)](#)

## Fraser Cabin Heritage Program

Presented by the Eastside Heritage Center in partnership with Bellevue Parks & Community Services, the Fraser Cabin, built in 1888, comes to life with hands-on activities that relate to 1880s settler life. For more information, contact the Eastside Heritage Center at 425-450-1049, or visit [eastsideheritagecenter.org](http://eastsideheritagecenter.org). Registration not required.

**Ages: all ages welcome**

**Fees: Free**

**Hours/Dates: 11 a.m.-3 p.m.**

June 10 (Saturday)

## Bees and Blooms

Come explore the world of pollinators at Kelsey Creek Farm! You and your child will visit our beehive, explore what kinds of flowers pollinators like, and make a bee-themed notebook. We'll talk about what honeybees do on farms and what native bees do for us all over Bellevue. Adult/child teams only.

**Ages: 4-8**

**Fees: \$25 (R) / \$30 (N)**

**Hours/Dates: 1-2 p.m.**

[June 18 \(Sunday\)](#)



# Weekend Programs

## Adult/Child Programs

### Little Farm Foodies

Do you ever wonder where your food comes from? Join Taran Burnett, a Registered Dietitian Nutritionist to learn more about growing, making, and eating delicious and nutrition foods. Each week will be packed with sensory activities, books, songs, farm animal encounters, and nutrition tips. Adult/child teams only.

**Ages: 2-3**

**Fees: \$78 (R) / \$94 (N)**

**Hours/Dates: 10-11a.m.**

[April 8-22 \(Saturday\)](#)

[May 13-27 \(Saturday\)](#)

[June 3-17 \(Saturday\)](#)

### Junior Farm Foodies

Do you ever wonder where your food comes from? Join Taran Burnett, a Registered Dietitian Nutritionist to learn more about growing, making, and eating delicious and nutrition foods. Each week will be packed with sensory activities, books, songs, farm animal encounters, and nutrition tips. Adult/child teams only.

**Ages: 4-6**

**Fees: \$106 (R) / \$127 (N)**

**Hours/Dates: 11:30 a.m.-noon**

[April 8-22 \(Saturday\)](#)

[May 13-27 \(Saturday\)](#)

[June 3-17 \(Saturday\)](#)



# Teen Programs

## Sheep Shearing Special Event Volunteers

Earn community service hours. Assist with children's activities and other event tasks at our annual Sheep Shearing event. Volunteers need to be able to follow directions, be comfortable in crowds, and be on their feet in all types of weather. Participants must register by April 17th, 2023. For more information, email us at [kelseycreekfarm@bellevuewa.gov](mailto:kelseycreekfarm@bellevuewa.gov), or call 425-452-7688. No day-of-event registrations will be accepted. All volunteers will be required to complete a Criminal Background check and provide their Social Security number which must be submitted by April 21st, 2023.

**Ages: 15+**

**Fees: Free**

**Hours/Dates: 10 a.m.-5:30 p.m.**

[Apr 29 \(Saturday\)](#)

## Saturday Morning Teen Farm Volunteers

Assist Kelsey Creek Farm staff in providing daily care to our farm animals. Help prepare meals for the animals, clean their living quarters, assist with other farm chores, and help bring the animals out to pasture for the day. Teens will learn responsible animal care, job skills, and independence while earning service hours for school.

**Ages: 15-18**

**Fees: \$15 (R) / \$18 (N)**

**Hours/Dates: 8:30 a.m.-noon**

[Apr 8-22 \(Saturday\)](#)

[May 6-27 \(Saturday\)](#)

[June 3-24 \(Saturday\)](#)





## After School Teen Farm Volunteers

Assist Kelsey Creek Farm staff with farm chores and learn responsible animal care while earning service hours for school. Participants will be working outside exposed to animals, hay, vegetation, and dust. Participants must be capable of understanding and following directions.

**Ages: 12-18**

**Fees: \$15 (R) / \$18 (N)**

**Hours/Dates: 1:30-4:30 p.m.**

[Apr 5-19 \(Wednesday\)](#)

[May 10-24 \(Wednesday\)](#)

[June 7-21 \(Wednesday\)](#)



## Adult Programs

### Sheep Shearing Special Event Volunteers

Assist staff with event set up, running children's activity booths and other event tasks at our annual Sheep Shearing event. This is one of Bellevue's most unique events, running for over 40 years. Volunteers gain experience working a large event, customer service skills, experience working with children, and teamwork skills while earning community service hours.

**Ages: 15+**

**Fees: Free**

**Hours/Dates: 10 a.m.-5:30 p.m.**

[Apr 29 \(Saturday\)](#)



## Adult Farm Volunteers

Assist Kelsey Creek Farm staff in providing daily care to our farm animals. Help prepare meals for the animals, clean their living quarters, assist with other farm chores, and help bring the animals out to pasture for the day. Volunteers will learn about caring for livestock and about Bellevue's agricultural history while giving back to their community.

**Ages: 18+**

**Fees: Free**

**Hours/Dates: 8:30-10:30 a.m.**

[Apr 4-18 \(Tuesday\)](#)

[Apr 5-19 \(Wednesday\)](#)

[Apr 6-20 \(Thursday\)](#)

[May 9-23 \(Tuesday\)](#)

[May 10-24 \(Wednesday\)](#)

[May 11-25 \(Thursday\)](#)

[June 6-20 \(Tuesday\)](#)

[June 7-21 \(Wednesday\)](#)

[June 8-22 \(Thursday\)](#)



## Stitch Circle

Bring your current fiber project to Kelsey Creek Farm and work on it while meeting fellow crafters. This is an opportunity to gather, chat, and work on projects while meeting new people, not a formal class. Bring your own materials. Pre-registration encouraged. Questions? Email Stacy at [ssstenslie@bellevuewa.gov](mailto:ssstenslie@bellevuewa.gov).

**Ages: 18+**

**Fees: Free**

**Hours/Dates: 10 a.m.-noon**

[Apr 14 \(Friday\)](#)

[May 12 \(Friday\)](#)

[June 9 \(Friday\)](#)

# Special Events

## Sheep Shearing

Watch the sheep being shorn of their winter coats. Enjoy wool spinning demonstrations, children's crafts, tractor-pulled wagon rides, pony rides, food, animal viewing areas, and more. Free shuttle service available at Wilburton Park & Ride and Bannerwood Sports Park. Please note: no pets allowed on shuttle bus or in the barnyard areas. No registration needed.

**Ages: All ages**

**Fees: Admission is free, costs vary for food & activities**

**Hours/Dates: 11 a.m.-4 p.m.**

[Apr 29 \(Saturday\)](#)





## Birthday Parties

Kelsey Creek Farm offers a variety of party packages to make your child's day special. All party packages are approximately two hours long. Each party begins with a group activity led by a member of our farm team and is followed by a one-hour room rental for cake and presents. The locations of the room vary with the type of party and room availability. All party room locations are indoor and include:

- ◆ 3 preschool-height tables (6 feet long by 2.5 feet wide) with children's chairs
- ◆ A refrigerator/freezer
- ◆ Kitchen sink and trash cans
- ◆ A restroom with hand-washing soap and paper towels

Maximum capacity for all parties is 25 people and has been set to respect facility codes, the safety and well-being of the animals, and to ensure guest enjoyment. Please note: animals available for interaction may change without warning based on individual animals' health and wellbeing.



## Farm Birthday Party

Celebrate your child's birthday with a visit to our historic farm. Make memories meeting farm animal friends. Birthday party package includes an approximately 45-minute farm tour and farm-themed craft, followed by one hour of room rental.

**Ages: 2-11**

**Fees: \$350 (R) \$420 (N)**

## Bunny Birthday Party

Celebrate your child's birthday by visiting the farm and meeting our friendly bunny. Enjoy a farm tour, a bunny craft, and special time with the birthday bunny. Birthday party package includes approximately 45-minute farm tour/bunny activity, followed by one hour of room rental.



**Ages: 2-11**

**Fees: \$350 (R) \$420 (N)**

## Pony Birthday Party

Celebrate your child's birthday by visiting the farm and meeting one of our ponies. Enjoy a farm tour, pony craft, and special time with the birthday pony. Birthday party package includes an approximately 45-minute farm tour and pony-themed craft, followed by one hour of room rental. Please note: this party does NOT include a pony ride.

**Ages: 4-11**

**Fees: \$350 (R) \$420 (N)**





# Tours

Experience the farm with a tour designed specifically for groups. Tour themes vary by season. Tours are available weekdays and are approximately 45 minutes long.

**Ages: most tours appropriate for children ages 2+ (see below for exceptions)**

## Kids on the Farm Group Tour

Available year-round

Explore our historic dairy farm with hands-on fun as you meet our farm animals. Learn interesting animal facts and local history as you travel back in time to when Bellevue was mostly farmland and forest. Go into the animal barn to see where the animals sleep at night and work on barn “chores” with child-sized pails and rakes.

## Fuzzy Farm Friends Group Tour

Available year-round

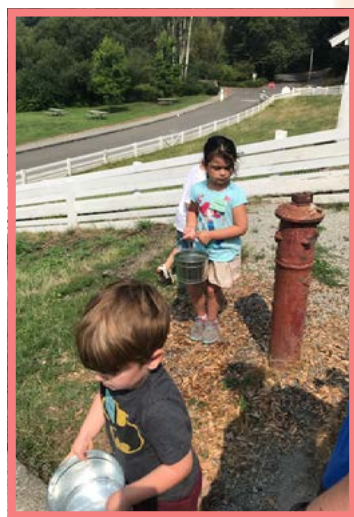
Have you ever wondered where yarn and wool sweaters come from? How does a sheep give us a pair of warm wool socks? Meet the Kelsey Creek Farm sheep and practice the skill of carding wool all while learning about sheep and fiber processing. Children will create a fuzzy sheep craft to take home.

## Pioneers on the Farm Group Tour

Available year-round

(recommended for ages 4+)

Imagine life in Bellevue in the 1880s. Children spend time looking around the Fraser cabin, built in 1888, and learning about what life was like for the pioneers when they arrived in the Bellevue area. Practice pioneer living history skills and go on a farm walk to learn how some of our farm animals would have been used by the pioneers.



## Springtime in the Barnyard Group Tour

Available May only

Welcome springtime in the barnyard with a hands-on tour among our favorite animals. Learn about their care, then get dirty in the garden planting and watering seeds.

## Fall on the Farm Group Tour

Available October only

Experience harvest season on the farm! Visit with some of our friendly farm animals and watch them eat a pumpkin treat. Then finish up by enjoying a story in our indoor off-the-vine pumpkin patch. Pumpkins are available for purchase for an additional fee.

## Rentals

For more rental information including pricing and room specs, visit [BellevueWA.gov/kelsey](http://BellevueWA.gov/kelsey).

### Outdoor Rentals

#### Kelsey Creek Farm Picnic Shelter

Rent Kelsey Creek Farm's Picnic Shelter for your next event! This covered picnic shelter has a capacity of 75 people and includes 6 picnic tables and 2 charcoal grills. To reserve, send an email with requested dates and times to [kelseycreekfarm@bellevuewa.gov](mailto:kelseycreekfarm@bellevuewa.gov)



## Indoor Rentals

Looking for space to host a party, class, or meeting? Kelsey Creek Farm features several indoor rental spaces including a farm house with a 760 square-foot community room and kitchen space as well as a 900 square-foot room in the historic 1943 barn. The unique farm setting makes these spaces perfect for memorable events.

Both rental spaces can be reserved seven days a week, and these spaces easily accommodate groups large or small with rooms for groups from 10 to 30 people. To reserve, send an email with requested dates and times to [kelseycreekfarm@bellevuewa.gov](mailto:kelseycreekfarm@bellevuewa.gov)

### Kelsey Creek Farm Room (Education Barn)



### Kelsey Creek Farm House







## FARM HISTORY

The farm's history began in 1921, when the Duey Family rented 190 acres and began delivering cream and butter stamped with the name Twin Valley Dairy. In August of 1933 the original barn burned. Mr. Duey, a skilled carpenter, along with some hired hands, rebuilt the barn in two weeks. Today, this barn is the smaller of the two barns and is called the Animal Barn. Mr. Duey also built the Red Barn, originally used as a milk house.

The second dairy barn (the north barn now known as the Education Barn) was built in 1943-44 by Mr. Michaels and the dairy herd was increased in size. After the end of WWII, he sold the farmstead to Ray and Nettie Fisher. The Fishers phased out the dairy operation and began raising Hereford beef cattle. They built the current farmhouse in 1954 and moved to live on the property.

In 1968 neighbors to the farm began a movement to petition the Bellevue City Council to purchase the property and secure it as a public park. The neighbors' petition succeeded, and the city negotiated with the Fisher family to purchase the 80 acres, including the farmhouse, barns and outbuildings. The Fishers sold their farm property to the City at a price much reduced from what they knew that they could get from developers. They did so because they believed in preserving the beauty and legacy of the agricultural buildings and the land.

In 1972 the oldest barn was modified to house an assortment of farm animals for public viewing. The other, larger barn, commonly referred to as the Education Barn, was remodeled inside and used to accommodate a variety of community programs, including children's day camps, art classes, and farm-themed classes, to name just a few.



# REGISTER ONLINE!

[register.bellevuewa.gov](https://register.bellevuewa.gov)

Scholarships available for  
many programs.

(R) RESIDENT / (N) NON-RESIDENT



**Kelsey Creek Farm**

410 130th Pl SE | Bellevue, WA 98005

425-452-7688

425-452-7688

[KelseyCreekFarm@bellevuewa.gov](mailto:KelseyCreekFarm@bellevuewa.gov)

[KelseyCreekFarm@bellevuewa.gov](mailto:KelseyCreekFarm@bellevuewa.gov)



For alternate formats, interpreters, or reasonable accommodation requests please  
phone at least 48 hours in advance 425-452-4253 (voice) or email [aslomonson@bellevuewa.gov](mailto:aslomonson@bellevuewa.gov)  
For alternate formats, interpreters, or reasonable accommodation  
requests please phone at least 48 hours in advance 425-452-4253  
ADA/Title VI Administrator at 425-452-6168 (voice) or email [ADATitleVI@bellevuewa.gov](mailto:ADATitleVI@bellevuewa.gov)  
(voice) or email [aslomonson@bellevuewa.gov](mailto:aslomonson@bellevuewa.gov). For complaints regarding  
if you are deaf or hard of hearing dial 711. All meetings are wheelchair accessible.

Disclaimer: The Bellevue School District does not sponsor nor endorse this event and  
for information purposes the district assumes responsibility for the consideration of  
the needs of hearing and deaf individuals. All meetings are wheelchair accessible  
less from any cause of action filed in any court or administrative tribunal arising out of the  
distribution of these materials, including costs, attorney's fees and judgments or awards.