

SUMMER
CAMPS
AND MORE

KELSEY CREEK FARM

Promoting learning opportunities
in a farm environment



SUMMER 2023



Kelsey Creek Farm provides the community an opportunity to cross the threshold of urban living into an agricultural experience, while maintaining the historic integrity of the farm, through interpretive displays and education. Our programs foster creativity and active play. The Farm's two historical barns sit prominently on the crest of a hill. There is no entrance fee; however, we welcome and appreciate your donations.

When visiting any of Bellevue's parks, all dogs and other pets must be kept on a leash. Out of consideration for our farm animals' health and wellbeing, please observe all posted signs prohibiting pets from the barnyard.

**FARM ANIMALS IN THE PASTURES
DAILY FROM 9 a.m.-3 p.m.
365 DAYS A YEAR
(R) /RESIDENT / (N) NON-RESIDENT**

Summer Day Camps

Kelsey Creek & Kid's Connection Day Camps

Explore the farm, play active outdoor games, create crafts, and make new friends. Trained staff will provide a safe and supportive environment in a small group setting. Each week will bring a variety of new and different activities.

Location: Kelsey Creek Farm

Ages: 4-6 (Kelsey Creek Day Camp)

Ages: 7-10 (Kid's Connection Day Camp)

Camp Fees: \$287 (R) / \$344 (N)

*Adjusted Fees: July 5-7 / \$172 (R) / \$206 (N)

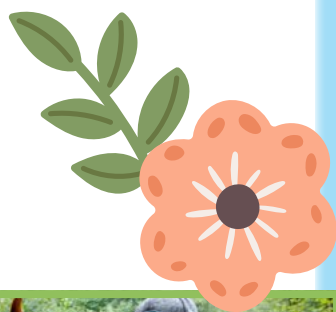
Hours: Mon-Fri, 9:30 a.m.-3 p.m.

Extended Care Package Available

Fees: \$124 (R) / \$149 (N)

*Adjusted fees: July 5-7 / \$74 (R) / \$90 (N)

Hours: 7:30 a.m.-5:30 p.m.



Out on the Farm

Gather eggs, get up close with the rabbits and chickens. Learn what it takes to care for the smaller animals on the Farm. Trained staff will provide a safe and supportive environment in a small group setting.

Date: June 26-30

Ages: [4-6](#)

Ages: [7-10](#)



Country Fair

Campers, join the fun at an old-fashioned country fair. Participate in an animal parade, enter a pie contest, and cool off with a refreshing glass of lemonade. Trained staff will provide a safe and supportive environment in a small group setting.

Date: July 5-7 *

Ages: [4-6](#)

Ages: [7-10](#)

Farm Science

How far can an egg fall without breaking? Learn about how pigs use mud to stay healthy and create a muddy concoction for your own toy piglet. This week will be filled with farm-style experiments, outdoor games, and activities. Trained staff will provide a safe and supportive environment in a small group setting.

Date: July 10-14

Ages: [4-6](#)

Ages: [7-10](#)

Sports & Games for All

Join barnyard relays, challenge yourself with a western-style obstacle course and participate in a variety of active sports and games. Join us as we celebrate the week with Farm Olympics. Trained staff will provide a safe and supportive environment in a small group setting.

Date: July 17-21

Ages: [4-6](#)

Ages: [7-10](#)

Wildlife Beyond the Barnyard

Did you know that owls, blue herons, beavers, and bobcats all call Kelsey Creek Farm Park their home? Create your own pair of binoculars and explore nearby wetlands, forest, and creek-sides in search of wildlife. Trained staff will provide a safe and supportive environment in a small group setting.

Date: July 24-28

Ages: [4-6](#)

Ages: [7-10](#)

Nature Science

Campers will spend their time outside, observing nature up close. Science concepts are introduced in a fun environment, with crafts, games, and hands-on activities. Come dressed to get messy and explore Kelsey Creek Farm. Trained staff will provide a safe and supportive environment in a small group setting.

Date: July 31-Aug 4

Ages: [4-6](#)

Ages: [7-10](#)



Stay Cool

Learn how the Kelsey Creek Farm animals stay cool on those long hot days of summer. Fill water troughs, make frozen treats for the rabbits and watch the pig play in the mud. Get ready for some wet and refreshing fun! This week will include a field trip to Robinswood Park for a water carnival. Trained staff will provide a safe and supportive environment in a small group setting.

Date: Aug 7-11

Ages: [4-6](#)

Ages: [7-10](#)

Young Farmers

Open the barn door and get to know some of the larger animals at the Farm. Help with barn chores, go on a goat walk and make a tasty treat for the pig. Trained staff will provide a safe and supportive environment in a small group setting.

Date: Aug 14-18

Ages: [4-6](#)

Ages: [7-10](#)



Robinswood Day Camp

Active play, imagination, and creativity in a safe and caring environment. Trained and competent staff in a small group setting. Each week will bring a variety of new and different activities.

Location: Robinswood Park

Ages: 4-7

Camp Fees: \$287 (R) / \$344 (N)

*Adjusted Fees: July 5-7 / \$172 (R) / \$206 (N)

Hours: Mon-Fri, 9:30 a.m.-3 p.m.

Extended Care Package Available

Fees: \$99 (R) / \$119 (N)

*Adjusted fees: July 5-7 / \$59 (R) / \$71 (N)

Hours: 8:30 a.m.-5 p.m.

Salty Seas

Create sandcastles, sift through the sand, and cool off in the water. Use seashells to create an underwater scene and participate in a game of sharks and minnows. Trained staff will provide a safe and supportive environment in a small group setting.

Date: [June 26-30](#)

Summer Celebrations

Come one, come all! Enter a pie making contest, crunch on a snow cone, and play carnival games. Each day will be a different themed celebration. Trained staff will provide a safe and supportive environment in a small group setting.

Date: [July 5-7](#) *

Wonders of Science

Open the door to the world of science. Mix up some ooey, gooey experiments and see what cool concoctions you can make. Trained staff will provide a safe and supportive environment in a small group setting.

Date: [July 10-14](#)



Ready, Set...Go!

Join us for this fun-filled week, packed with great games, sports and non-stop action! Run relays and challenge yourself with an obstacle course. This week campers will travel to Kelsey Creek Farm to participate in camp-wide Olympics. Trained staff will provide a safe and supportive environment in a small group setting.

Date: July 17-21

Out and About in Nature

Take a hike and explore the park for unique plants, bugs, and animals. Design your own binoculars to use when we go bug hunting. See how many different tiny creatures you can find! Trained staff will provide a safe and supportive environment in a small group setting.

Date: July 24-28

World of Rainbows through Science and Art

This week, camp is all things science and art. Children will get a chance to put their creativity to work through rainbow themed science experiments and a variety of art projects. Trained staff will provide a safe and supportive environment in a small group setting.

Date: July 31-Aug 4

Let's Get Wet!

Create your own sea creatures and enjoy a camp-wide water carnival. Get ready for lots of water fun. Trained staff will provide a safe and supportive environment in a small group setting.

Date: Aug 7-11



Go Go with Van Gogh Art Camp

Fine arts on the farm, inspired by the Kelsey Creek Farm environment. Your elementary-age child will celebrate their individual creative expressions through exploration of multiple-medias. Paint with colorful acrylics, sketch on the farm, develop watercolor style with color theory exploration, sculpting with Model Magic, create collages, and use oil pastels too. Dress for creative mess and bring your playful imagination. Instructor Diane Culhane is a renowned artist in the Pacific Northwest with a master's degree in Art Education and extensive teaching experience. Her work is represented in galleries and shows across the country. \$20 supply fee due the first day of camp.

Ages: 6-11

Camp Fees: \$390 (R) / \$468 (N)

*Adjusted Fees: July 5-7 / \$234 (R) / \$281 (N)

Hours: Mon-Fri, 9:30 a.m.-3 p.m.

Extended Care Package Available

Fees: \$124 (R) / \$149 (N)

*Adjusted fees: July 5-7 / \$74 (R) / \$90 (N)

Hours/Dates: 7:30 a.m.-5:30 p.m.

[June 26-30](#)

[July 5-7*](#)

[July 10-14](#)

[July 17-21](#)

[Aug 7-11](#)

[Aug 14-18](#)



Cartooniversity Day Camp

Ages: 9-14

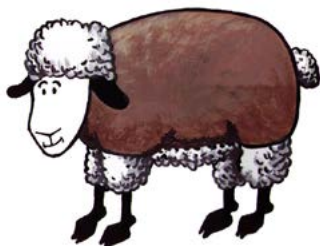
Fees: \$400 (R) / \$480 (N)

Hours: Mon-Fri, 10 a.m.-3 p.m.

Location: Robinswood Park

Join professional cartoonist Jeff Johnson for a unique opportunity for kids of all skill levels to explore the art of cartooning in an encouraging, positive classroom environment at Robinswood Park. A series of fun, challenging projects showcase multiple areas of study including faces, bodies, character development, layout, perspective, lettering and much more. Emphasis is on developing each student's own style. All materials provided. Come join the fun!

[Aug 14-18](#)



Location: Kelsey Creek Farm

Join professional cartoonist Jeff Johnson for a unique opportunity for kids of all skill levels to explore the art of cartooning in an encouraging, positive classroom environment at Kelsey Creek Farm. Surrounded by historic dairy barns and the farm animals that call Kelsey Creek Farm, "home," students will have plenty of inspiration to create their own cartoons. A series of fun, challenging projects showcase multiple areas of study including faces, bodies, character development, layout, perspective, lettering and much more. Emphasis is on developing each student's own style. All materials provided. Come join the fun at Kelsey Creek Farm!

[Aug 21-25](#)



Farm Adventurers Camp

Spend a week exploring the world of farming! Activities will include animal interactions, agricultural education, and actual work experience for which your child will receive an official volunteer certificate. Participants will learn to work with various farm animals, they will create crafts with material from the farm, learn about the history of Seattle-area agriculture, and participate in farm chores.

Ages: 11-13

Fees: \$136 (R) / \$163 (N)

*Adjusted Fees: July 5-7 / \$82 (R) / \$98 (N)

Hours/Dates: Mon-Fri, 9a.m.-2:30p.m.

[June 26-30](#)

[July 5-7*](#)

[July 10-14](#)

[July 17-21](#)

[July 24-28](#)

[July 31-Aug 4](#)

[Aug 7-11](#)

[Aug 14-18](#)

[Aug 21-25](#)



Future Doctor Camp

Students will role-play the key responsibilities of a doctor and learn about vital organs in the human body. These future doctors will practice suturing stitches and administering first aid; they will learn about the heart, lungs, bones, brain, spine, eyes, digestion, and how pharmacists play a role in prescribing medicine. This camp is offered by Little Medical School.

Ages: 7-9

Fees: \$325 (R) / \$390 (N)

Hours/Dates: 9:30 a.m.-12:30 p.m.

[July 24-28](#)



Future Veterinarian Dog Camp

Students will role-play the key responsibilities of a veterinarian and learn how to care for a dog. These future veterinarians will learn how to remove ticks, give immunizations, suture lacerations, read an x-ray, design their own veterinarian office, and explore dog digestion. This camp is offered by Little Medical School.

Ages: 7-9

Fees: \$325 (R) / \$390 (N)

Hours/Dates: 12:30-3:30 p.m.

[July 24-28](#)

Future Veterinarian Horse Camp

Students will role-play the key responsibilities of a veterinarian and learn how to care for a horse. These future veterinarians will learn basic horse facts, horse anatomy, preparing a horse to ride, caring for a horse, and horseback riding styles. Campers will learn and practice their skills on a stuffed animal horse. This camp does not include a pony ride. This camp is offered by Little Medical School.

Ages: 7-9

Fees: \$325 (R) / \$390 (N)

Hours/Dates: 9:30 a.m.-12:30 p.m.

[July 31-Aug 4](#)

Future Pediatrician Camp

Students will role-play the key responsibilities of a pediatrician and learn how to care for a baby. These future pediatricians will learn how to change a diaper, bathe, burp, swaddle, and bottle feed a baby, explore the different parts of the brain and spine, perform a physical exam, administer first aid, and discover the functions of the heart and lungs. This camp is offered by Little Medical School.

Ages: 5-7

Fees: \$325 (R) / \$390 (N)

Hours/Dates: 12:30-3:30 p.m.

[July 31-Aug 4](#)



Teen Programs

Summer Teen Farm Volunteers

Volunteers will help with the animal chores, participate in special projects, and learn responsible animal care. Qualifications include understanding and following directions, ability to be on your feet for a physically active day, tolerance for being outside and working in a farm environment near animals, hay, vegetation, and dust.

Ages: 14-18

Fees: \$15 (R) / \$18 (N)

Hours/Dates: Mon-Fri, 8:30 a.m.-4 p.m.

[June 26-30](#)

[July 5-7](#)

[July 10-14](#)

[July 17-21](#)

[July 24-28](#)

[July 31-Aug 4](#)

[Aug 7-11](#)

[Aug 14-18](#)

[Aug 21-25](#)



Counselor in Training: Kelsey Creek Camp Volunteer

Counselor in Training (CIT) volunteers will assist Day Camp staff with children in our Day Camp programs. CITs will assist staff with daily activities for campers, provide attentive supervision during assigned activities, provide a positive role model for campers by exhibiting an upbeat, cooperative, and friendly attitude, and help campers learn and follow rules to ensure a safe and healthy environment. CIT volunteers must be punctual, follow directions, and demonstrate excellent verbal communication skills.

Ages: 15-18

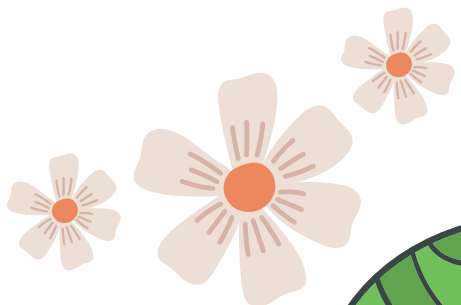
Fees: \$15 (R) / \$18 (N)

Hours/Dates: 8:30 a.m.-4:30 p.m.

[June 26-30](#)

[July 5-7](#)

[July 10-14](#)



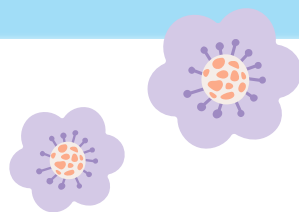
[July 17-21](#)

[July 24-28](#)

[July 31-Aug 4](#)

[Aug 7-11](#)

[Aug 14-18](#)



Counselor in Training: Robinswood Camp Volunteer

Counselor in Training (CIT) volunteers will assist Day Camp staff with children in our Day Camp programs. CITs will assist staff with daily activities for campers, provide attentive supervision during assigned activities, provide a positive role model for campers by exhibiting an upbeat, cooperative, and friendly attitude, and help campers learn and follow rules to ensure a safe and healthy environment. CIT volunteers must be punctual, follow directions, and demonstrate excellent verbal communication skills.

Ages: 15-18

Fees: \$15 (R) / \$18 (N)

Hours/Dates: 8:30 a.m. -4:30 p.m.

[June 26-30](#)

[July 5-7](#)

[July 10-14](#)

[July 17-21](#)

[July 24-28](#)

[July 31-Aug 4](#)

[Aug 7-11](#)



Counselor in Training: Farm Discoveries Camp Volunteer

Counselor in Training (CIT) volunteers will assist Day Camp staff with children in our Day Camp programs. CITs will assist staff with daily activities for campers, provide attentive supervision during assigned activities, provide a positive role model for campers by exhibiting an upbeat, cooperative, and friendly attitude, and help campers learn and follow rules to ensure a safe and healthy environment. CIT volunteers must be punctual, follow directions, and demonstrate excellent verbal communication skills.

Ages: 15-18

Fees: \$15 (R) / \$18 (N)

Hours/Dates: 8:30 a.m.-1:30 p.m.

[June 26-30](#)

[July 5-7](#)

[July 10-14](#)

[July 17-21](#)

[July 24-28](#)

[July 31-Aug 4](#)

[Aug 7-11](#)

[Aug 14-18](#)

[Aug 21-25](#)



Fraser Cabin Heritage Program

Presented by the Eastside Heritage Center in partnership with Bellevue Parks & Community Services, the Fraser Cabin, built in 1888, comes to life with hands-on activities that relate to 1880s settler life. For more information, contact the Eastside Heritage Center at 425-450-1049, or visit eastsideheritagecenter.org. Registration not required.

Ages: Open to all ages

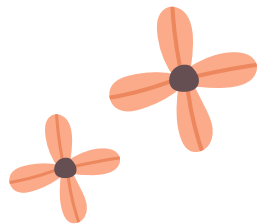
Fees: Free

Hours/Dates: 11 a.m.-3 p.m.

[June 10](#)

[July 8](#)

[August 12](#)



Log Cabin Open House

Visitors of all ages are welcome to join us for this free, drop-in event to explore Kelsey Creek Farm's log cabin, which was built in 1888. Children can participate in a variety of free pioneer activities, including grinding wheat, churning butter, and playing with bread dough. We will have antique logging and farming implements from the 1880s on display, including a variety of axes, farm implements, and other tools. You can watch a wool spinning demonstration and try your hand at carding wool. Adults can take a deeper dive into the history of logging and farming on the Eastside with our farm's passionate historian. Registration is not required.

Ages: Open to all ages

Fees: Free

Hours/Dates: 1-3 p.m.

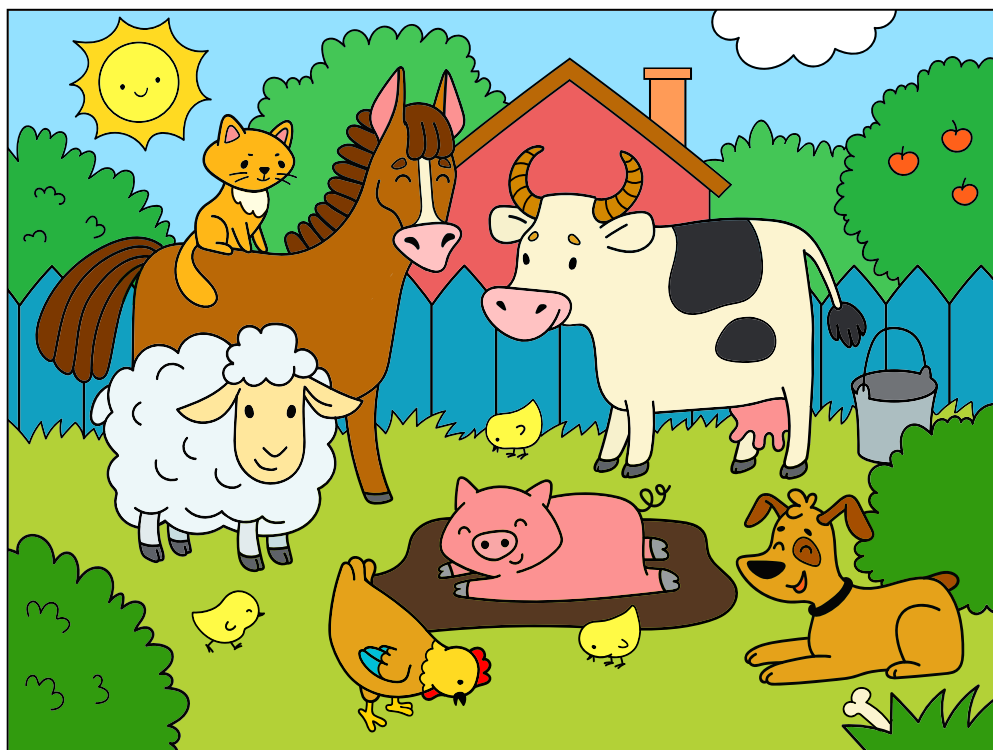
[Jul 16](#)



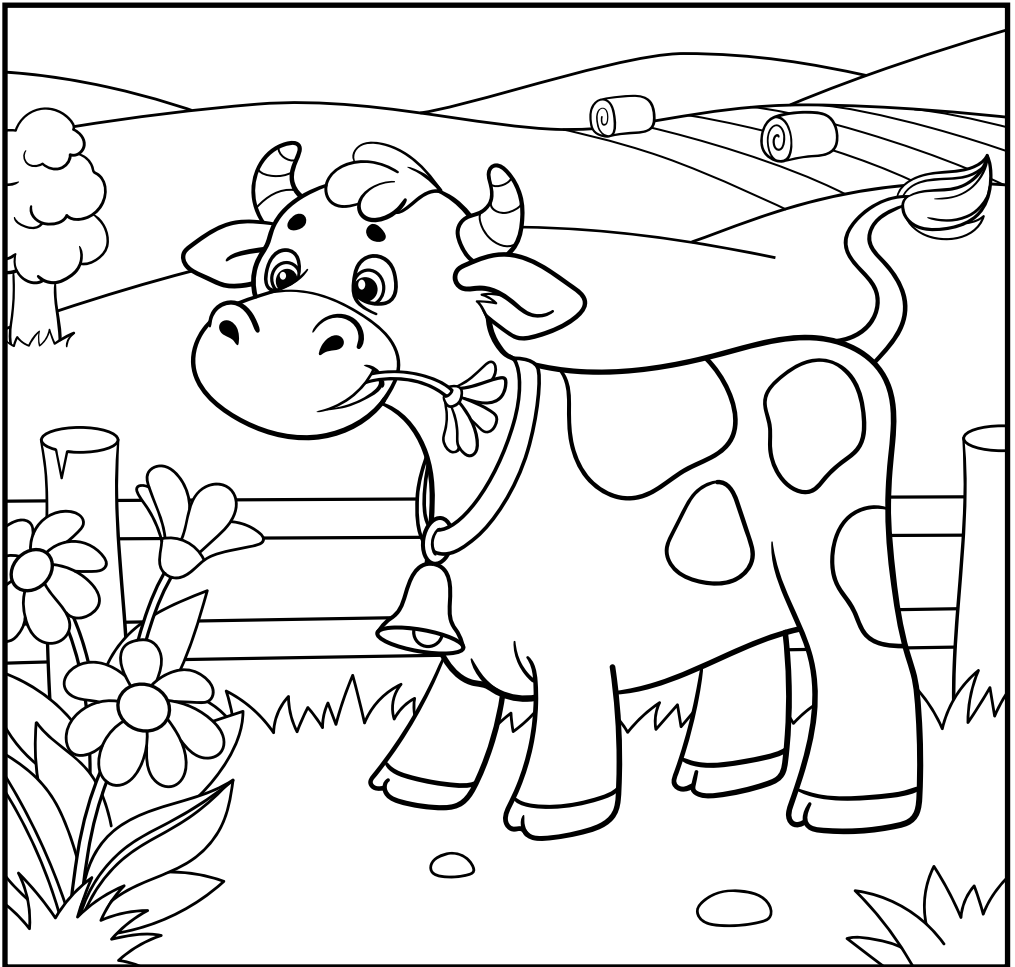
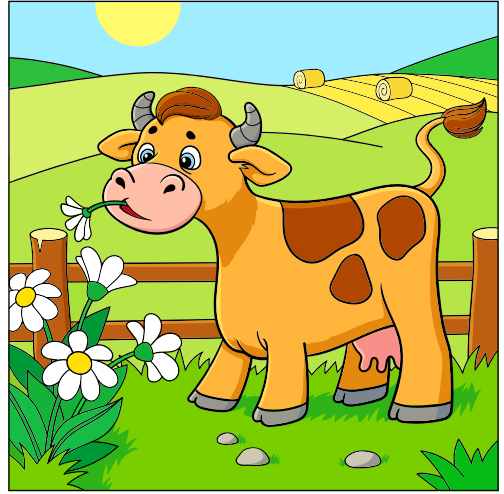
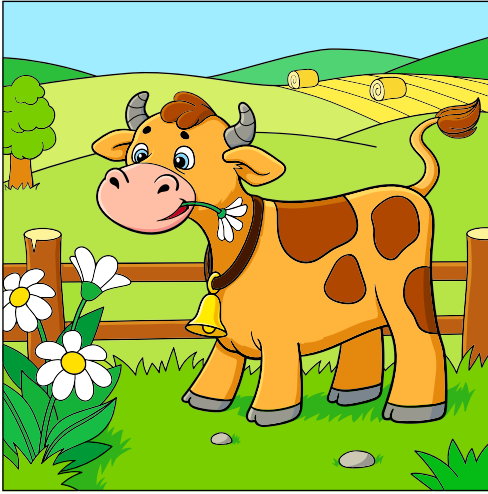




Find 12 differences



Find 10 differences





FARM HISTORY

The farm's history began in 1921, when the Duey Family rented 190 acres and began delivering cream and butter stamped with the name Twin Valley Dairy. In August of 1933 the original barn burned. Mr. Duey, a skilled carpenter, along with some hired hands, rebuilt the barn in two weeks. Today, this barn is the smaller of the two barns and is called the Animal Barn. Mr. Duey also built the Red Barn, originally used as a milk house.

The second dairy barn was built in 1943–44 by Mr. Michaels, the new owner, (this is the north barn now known as the Education Barn) and the dairy herd was increased in size. After the end of WWII, he sold the farmstead to Ray and Nettie Fisher. The Fishers phased out the dairy operation and began raising Hereford beef cattle. They built the current farmhouse in 1954 and moved to live on the property.

In 1968 neighbors to the farm began a movement to petition the Bellevue City Council to purchase the property and secure it as a public park. The neighbors' petition succeeded, and the city negotiated with the Fisher family to purchase the 80 acres, including the farmhouse, barns and outbuildings. The Fishers sold their farm property to the City at a price much reduced from what they knew that they could get from developers. They did so because they believed in preserving the beauty and legacy of the agricultural buildings and the land.

In 1972 the oldest barn was modified to house an assortment of farm animals for public viewing. The other, larger barn, commonly referred to as the Education Barn, was remodeled inside and used to accommodate a variety of community programs, including children's day camps, art classes, and farm-themed classes, to name just a few.

REGISTER ONLINE!

register.bellevuewa.gov

**Scholarships available for
many programs.**

(R) /RESIDENT / (N) NON-RESIDENT



Kelsey Creek Farm

410 130th PI SE | Bellevue, WA 98005

425-452-7688

KelseyCreekFarm@bellevuewa.gov



For alternate formats, interpreters, or reasonable accommodation requests please phone at least 48 hours in advance 425-452-4253 (voice) or email asolomonson@bellevuewa.gov. For complaints regarding accommodations, contact City of Bellevue ADA/Title VI Administrator at 425-452-6168 (voice) or email ADATitleVI@bellevuewa.gov. If you are deaf or hard of hearing dial 711. All meetings are wheelchair accessible.