



**EASTGATE/FACTORIA
NEIGHBORHOOD AREA**



OPEN HOUSE AGENDA

- **INTRODUCTIONS**
- **RE-CAP OF NEP PROCESS**
- **PROJECT SCOPING/REVIEW - CRITERIA USED**
- **TYPES OF PROJECTS SUBMITTED**
- **OVERVIEW OF EASTGATE/FACTORIA SCHEDULE**
- **EASTGATE/FACTORIA PROJECTS AND LOCATION MAP**
- **HOW NEP VOTING WORKS**
- **MEET WITH PROJECT MANAGERS**



NEP IS...

- **Council-directed, City-Funded, Capital Improvements Program**
- **Provides RESIDENTS the opportunity to PROPOSE and SELECT enhancement projects for their individual neighborhood area**
- **\$7 Million BUDGET distributed among 14 NEP designated neighborhood areas**
- **Area funds allocated based on the number of households in each Neighborhood Area**
- **Rotates through 14 Neighborhood areas over seven-year period – TWO AREAS per year (2023-2029)**
- **Program supported by multiple City departments – Community Development, Parks, Transportation, Utilities**
- **Currently 25 NEP capital projects in progress around the city in 12 of the 14 neighborhood areas**



RE-CAP OF PROGRAM IN EASTGATE/FACTORIA

- **CITY ALLOCATES \$\$ TO NEIGHBORHOODS**
\$370,000 FOR EASTGATE/FACTORIA
- RESIDENTS SUBMIT IDEAS FOR SPENDING \$\$
144 SUBMISSIONS RECEIVED (NOT UNIQUE)
- **CITY REVIEWS IDEAS & GENERATES PROJECTS**
10 PROJECTS ON NEP BALLOT
- RESIDENTS SELECT PROJECTS TO RECEIVE \$\$
MAIL-IN NEP BALLOTS DUE JULY 21ST
- **SELECTED PROJECTS ANNOUNCED LATE
SEPTEMBER**
- **CITY IMPLEMENTS PROJECTS IN 3-5 YEARS**



PROJECT SCOPING/REVIEW

- MARCH – MAY 2023
- TRANSPORTATION, PARKS, COMMUNITY DEVELOPMENT & UTILITIES
- REVIEWED & EVALUATED SUBMISSIONS PER NEP CRITERIA
- CONSIDERED CURRENT & FUTURE WORK PLANS
- CONDUCTED SITE VISITS
- DEVELOPED **10** PROJECTS



PROJECT CRITERIA

AFFORDABILITY

PROJECT COSTS MUST NOT EXCEED THE FUNDING ALLOCATION FOR THE NEIGHBORHOOD AREA

CONSISTENCY

PROJECTS MUST BE CONSISTENT WITH CITY PLANS AND POLICIES

FEASIBILITY

PROJECTS MUST BE PRACTICAL AND ACHIEVABLE FOR THE CITY

IMPLEMENTATION

PROJECTS MUST BE DESIGNED AND CONSTRUCTED WITHIN 3-5 YEARS OF SELECTION

MAINTAINABILITY

PROJECTS MUST NOT REQUIRE MAINTENANCE THAT IS BURDOMESONE TO THE CITY

PUBLIC BENEFIT

PROJECTS MUST BE LOCATED ON PUBLIC PROPERTY, EASEMENTS, OR PROPERTY DESIGNATED FOR PUBLIC USE, AND MUST BENEFIT THE GENERAL PUBLIC



PROJECT REQUESTS

144 PROJECT SUBMISSIONS RECEIVED

SIDEWALKS

CROSSWALKS

TRAFFIC MANAGEMENT (EX.
SPEED BUMPS)

STREETLIGHTS

TRAIL IMPROVEMENTS

LANDSCAPING

NEIGHBORHOOD SIGNAGE

FENCE REPAIR

PARK ENHANCEMENTS

PICKLEBALL COURTS

LAND ACQUISITION

DOG PARK

SEWER LINE CONNECTION

BIKE PATHS

UNDERGROUND POWERLINES

LICENSE PLATE READERS

SECURITY CAMERAS

SKATE PARK

TENNIS COURTS

BOCCE BALL COURTS



EASTGATE/FACTORIA SCHEDULE

KICKOFF MEETING – January 25, 2023 - ZOOM

IDEA SUBMISSION – January 25 – March 3, 2023

PROJECT SCOPING – March- May 2023

**PUBLIC OPEN HOUSE – June 15, 2023 – South
Bellevue Community Center**

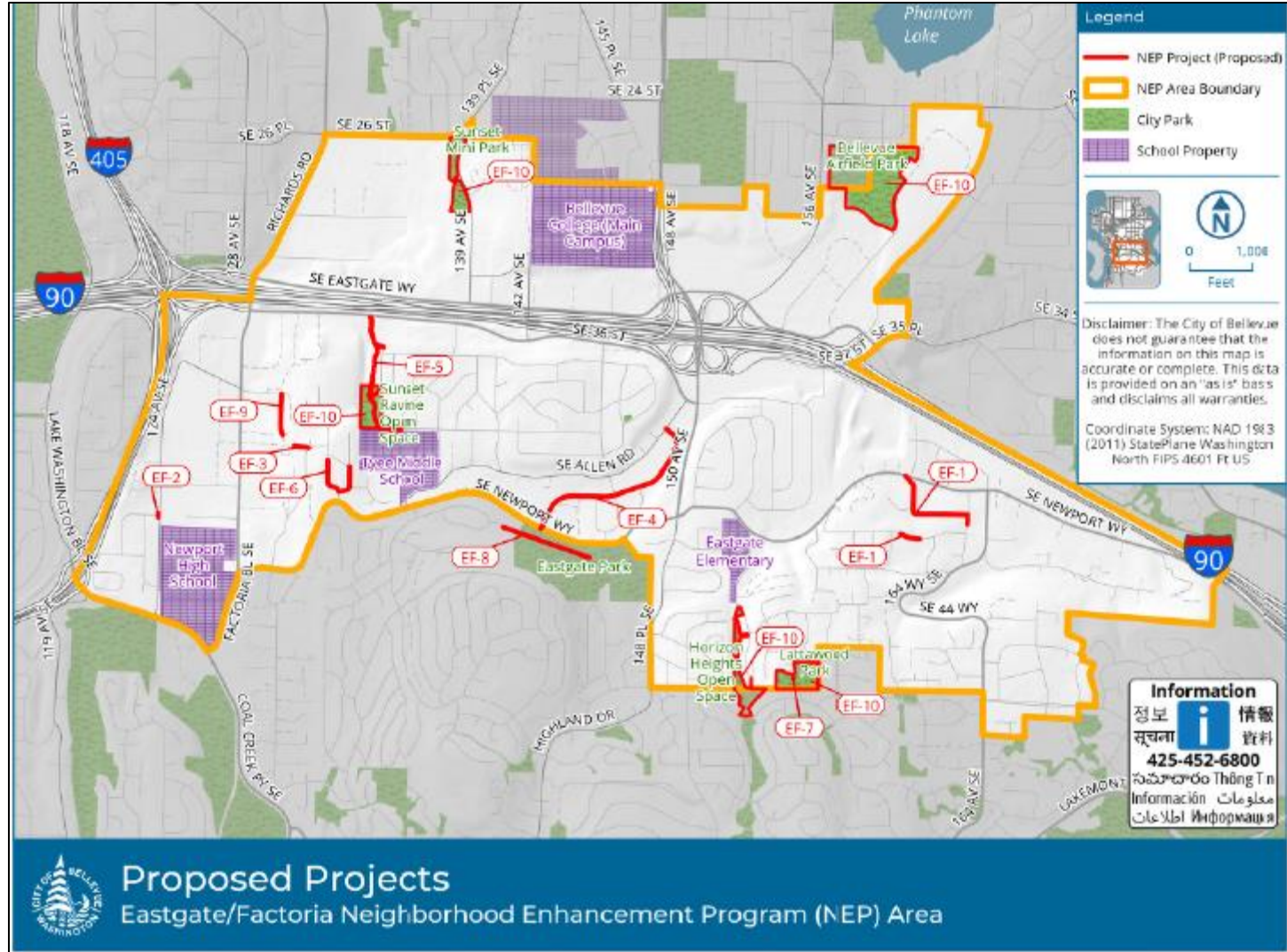
RESIDENT VOTING – June – July 21, 2023

PROJECT ANNOUNCEMENT NEWSLETTER – Sept 2023

RESIDENT EVALUATIONS – October 2023



EASTGATE/FACTORIA PROJECT LOCATIONS MAP





EASTGATE/FACTORIA BALLOT PROJECTS

(EF-1) SE 42nd St/PL and 161st Ave SE Streetlights

(EF-2) New Pedestrian-Activated Crosswalk Flashing System (124th SE/SE 44th)

(EF-3) 131st Ave SE Staircase and Pedestrian Railing

(EF-4) SE 42nd St and 149th Ave SE Streetlights

(EF-5) Sunset Ravine Trail Enhancements

(EF-6) 134th Ave SE and 133rd Ave SE Street Lights

(EF-7) Adult Exercise Equipment @ Lattawood Park

(EF-8) Eastgate Trail Connection to SE 42nd Street

(EF-9) 129th PI SE Street Lights

(EF-10) Eastgate/Factoria Area Invasive Vegetation Removal & Tree Planting



HOW VOTING WORKS

- EACH EASTGATE/FACTORIA HOUSEHOLD RECEIVED (1) BALLOT EARLY JUNE 2023 (HOUSEHOLD = SINGLE FAMILY HOME, CONDO UNIT, APARTMENT)
- VOTE FOR TOP 3 PROJECTS AND MAIL BALLOT BY **JULY 21ST, 2023**
- STAFF TABULATES VOTES
#1 = 3 POINTS #2 = 2 POINTS #3 = 1 POINT
- VOTING BY MAIL ONLY, LIMITED TO ONE PER HOUSEHOLD ADDRESS
- PROJECTS ANNOUNCED IN **LATE SEPTEMBER 2023**



STAY INFORMED

WWW.BELLEVUEWA.GOV/NEP

NEP:

Theresa Cuthill

TCuthill@Bellevuewa.gov

Eastgate Neighborhood Liaison:

Mark Heilman

MHeilman@Bellevuewa.gov

Factoria Neighborhood Liaison:

Sarina Miller

SaMiller@Bellevuewa.gov

Bellevue Essentials – Civic Engagement Academy



The graphic is a promotional poster for "Bellevue Essentials". At the top left is the City of Bellevue logo. To its right, the text "Bellevue Essentials" is written in a large, blue, sans-serif font. Below this, a dark blue banner contains the text "An Introduction to Civic Engagement" in white. Underneath the banner, a black bar reads "NOW IN OUR 11TH YEAR!". The main body of the graphic is a photograph showing a group of people gathered around a table, engaged in a community activity. In the bottom left corner, there is a smaller inset photograph of a group of people walking outdoors. To the right of this inset, the text "Eleven-week course on Bellevue city government in action" is written in white on a blue background.

- 11-week introduction to Civic Engagement
- Information meeting:
Tues. June 20 5:30pm
Newport Way Library,
14250 SE Newport Way
- For More Information contact:
Julie Ellenhorn
Jellenhorn@bellevuewa.gov
- Application deadline: July 20

bellevuewa.gov/bellevue-essentials

Keep Bellevue Beautiful – New Clean Up Program Coming to City



Two Summer Clean Up Events Scheduled!

Join us for helping to pick up litter and clean up Downtown and Factoria this summer!

Downtown, Saturday morning, August 12, 8:30 -10 a.m. (Meet at Bellevue City Hall)

Factoria, Saturday morning, August 19, 8:30-10 a.m. (Meet at Factoria Mall)

For More Information contact: Sarina Miller

Samiller@bellevuewa.gov

bellevuewa.gov/keepbellevuebeautiful

MONTHLY NEIGHBORHOOD NEWS




Lake to Lake Bike Ride

Explore Bellevue's hidden treasures by bike, and be part of the tenth annual Lake to Lake Bike Ride on Saturday, June 10. The event will provide riders of all levels and abilities an opportunity to experience and explore Bellevue by bicycle on some of the city's beautiful trail systems. Children 8 years of age and younger can enjoy a ride in the park afterwards. Bring the whole family to this enjoyable, non-competitive ride benefitting the City of Bellevue Youth Program donation fund to help make healthy and fun recreation accessible to all kids!

Start and Finish is at Robinswood Community Park, 14915 SE 22nd Street.

For more information, call 425-452-4882, email bikeride@bellevuewa.gov or visit parks.BellevueWA.gov/ride.



 For alternate formats, interpreters, or reasonable accommodation requests please phone at least 48 hours in advance 425-452-2735 (voice) or email mheilman@bellevuewa.gov. For complaints regarding accommodations, contact City of Bellevue ADA/Title VI Administrator at 425-452-6168 (voice) or email ADATitleVI@bellevuewa.gov. If you are deaf or hard of hearing dial 711. All meetings are wheelchair accessible.



Homeowners receive help through Day of Sharing and Caring

Requests for outdoor home projects are due by June 30



Residents needing assistance with outside home maintenance can apply for help from a team of volunteers who will complete one-day improvement projects through the Day of Sharing and Caring program. Past projects have included yard clean-up, power washing, fence, gate or shed repair and painting, green debris and junk hauling, wood-round removal and bark spreading.

In its 18th year, Day of Sharing and Caring is a partnership between the City of Bellevue and Jubilee REACH, a Bellevue-based nonprofit organization.

A committee representing Jubilee REACH will review applications and select projects that fit the skills of the volunteer teams.

To be considered for home repair assistance, residents must own and occupy a home in Bellevue. Project selection is need-based, and residents facing economic or other life challenges are highly encouraged to apply.

Residents can request more information, learn of additional resources and begin the application process by contacting Sarina Miller at samiller@bellevuewa.gov.

Interested in volunteering? Individuals, businesses and nonprofit groups interested in volunteering on Service Day, Saturday August 26, can access online registration at JubileeREACH.org.

Subscribe to Neighborhood News electronically: BellevueWA.gov/neighborhood-news

Neighborhood Enhancement Program

Eastgate/Factoria Projects Open House scheduled for June 15.

Eastgate/Factoria residents are invited to join your neighbors and city staff at a public open house on Thursday, June 15, 6:30-8 p.m. at the South Bellevue Community Center, 1459 SE Newport Way. The open house will allow you to review 10 small capital projects that will be included on your NEP ballot and eligible for funding from the \$370,000 Eastgate/Factoria NEP budget allocation. A brief overview of the project scoping and NEP voting processes will also be provided. Please email your reservation to neighborhoodoutreach@bellevuewa.gov

Cougar Mountain/Lakemont NEP is in scoping and review phase.

The project submission phase for the Cougar Mountain/Lakemont NEP closed on May 6. City staff are now in the scoping and review phase of the more than 120 project ideas that were submitted for your neighborhood area. Staff will present projects eligible for funding through the \$377,000 Cougar Mountain/Lakemont NEP budget allocation at a Sept. 14 public open house at the Lewis Creek Visitor Center.

The Neighborhood Enhancement Program is a city-funded program that allows residents to propose and select modest, capital projects to enhance their neighborhoods. The program rotates through the city's 14 NEP neighborhood areas over the course of seven years, serving two areas each year. The \$7 million program allocation is distributed among each of the NEP neighborhood areas, according to the number of households in each area.

Questions? Contact Theresa Cuthill at tcuthill@bellevuewa.gov.

June Walking Tours!

If you missed the walking tours during the 2022 Experience Bellevue Conference, they are back by popular demand! Join City of Bellevue staff and learn about Downtown's development as the city's



fastest growing neighborhood. The meeting place and instructions for each tour listed below will be emailed to you upon registration.

Note: The Wilburton and BelRed/Spring District tours are at participant capacity, and we are no longer accepting reservations for those tours.

Each tour is limited to 20 participants and requires registration. Tours will include leisurely walks, approximately 1.5 miles in length, rain or shine. To reserve your space, indicate which tour interests you in an email to neighborhoodoutreach@bellevuewa.gov or contact Julie Ellenhorn at 425-452-5372.

North Downtown Walking Tour Tuesday, June 6 | 5:30-7 p.m.

The longstanding vision for Downtown Bellevue is to be a great place to live, work and visit. The work to make this vision a reality is called the Great Place Strategy, and significant public and private investments are now occurring that will add more vibrancy and attractions to the area. Are you interested in learning more about the Downtown neighborhood? What are your thoughts on Downtown's evolution? Join Liz Stead, Land Use Director and Emil King, Planning Director, along with your neighbors to see and experience Downtown Bellevue and envision its future with us. The tour will take participants on a walk through Downtown and north to Northeast 12th Street.

South Downtown Walking Tour Tuesday, June 13 | 5:30-7 p.m.

In this exploration of Downtown Bellevue's Great Place Strategy, participants will walk downtown and south to Main Street. Significant public and private investments are now occurring that will add more vibrancy and attractions to the entire Downtown area. Are you interested in learning more about the Downtown neighborhood? What are your thoughts on Downtown's evolution? Join Liz Stead, Land Use Director and Emil King, Planning Director, along with your neighbors to see and experience Downtown Bellevue through the south edition walking tour.



To Subscribe: BellevueWA.gov/neighborhood-news