

Curb Type Overview: Movement (Auto)

Description:

- Curbside lane may be used primarily as a general purpose travel lane
- May include continuous landscaping "buffer" with few gaps or breaks
- Some curbside lanes may be used for storage uses (i.e. parking) during off-peak periods

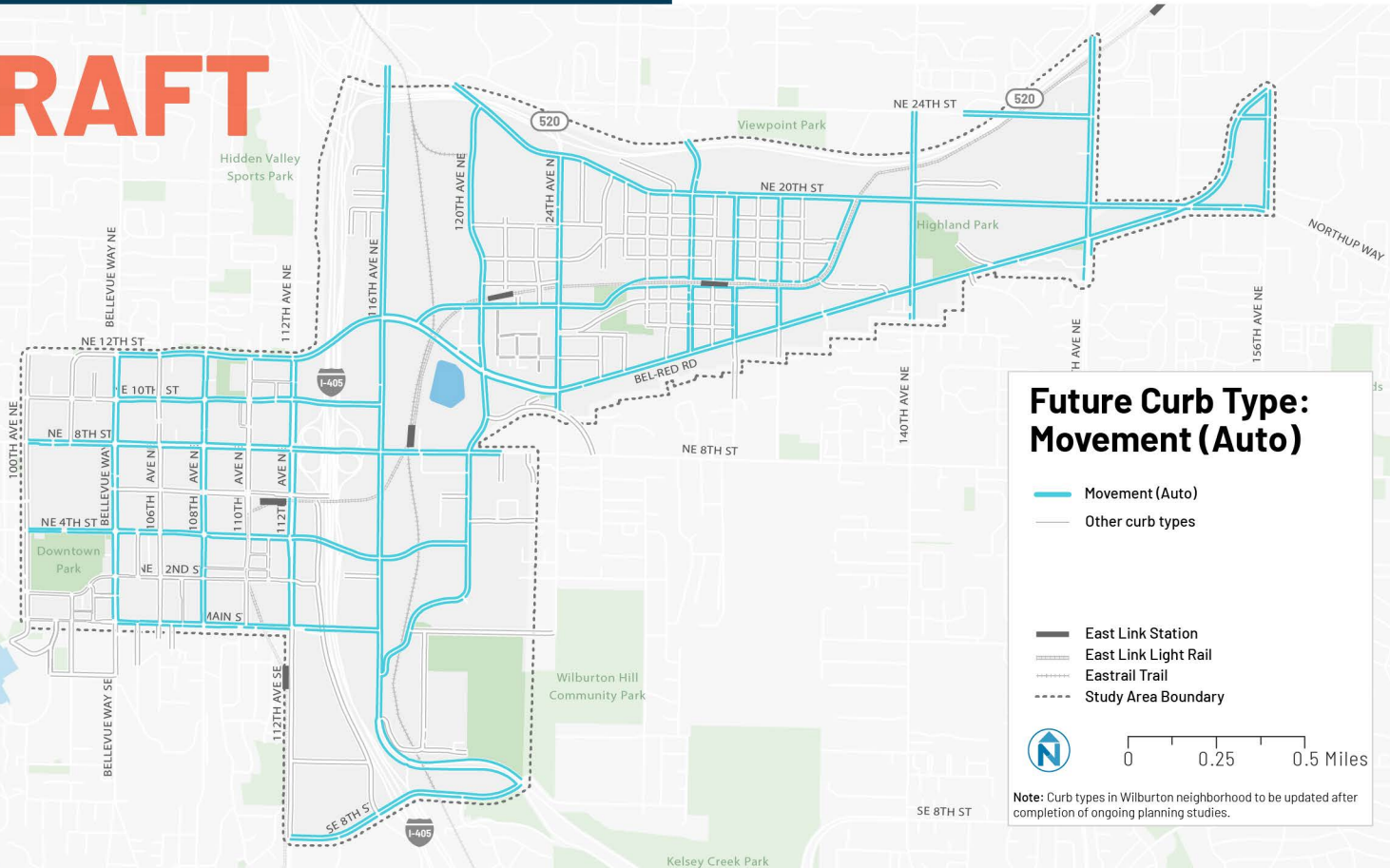
References:

- Mobility Implementation Plan – Primary vehicle corridor
- Bellevue Comprehensive Plan Downtown Element – Auto priority
- Bellevue Comprehensive Plan – Freight route
- BelRed Streetscape Plan – Mobility network

Example Diagram:



DRAFT



Curb Type Overview: Movement (Bicycle)

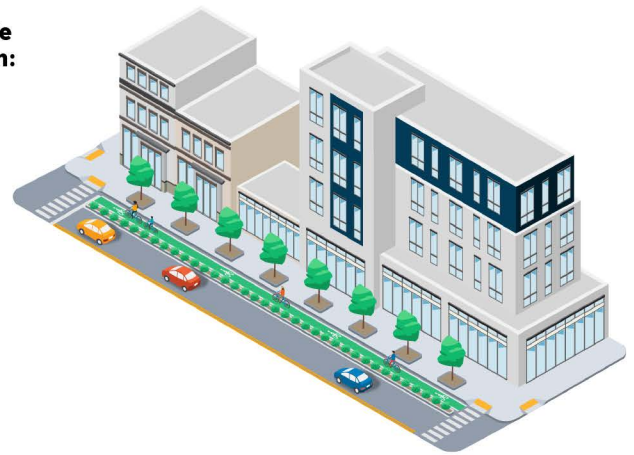
Description:

- Curbside lane may include a dedicated bicycle facility such as a bike lane and protected bike lane
- May include bicycle parking nearby

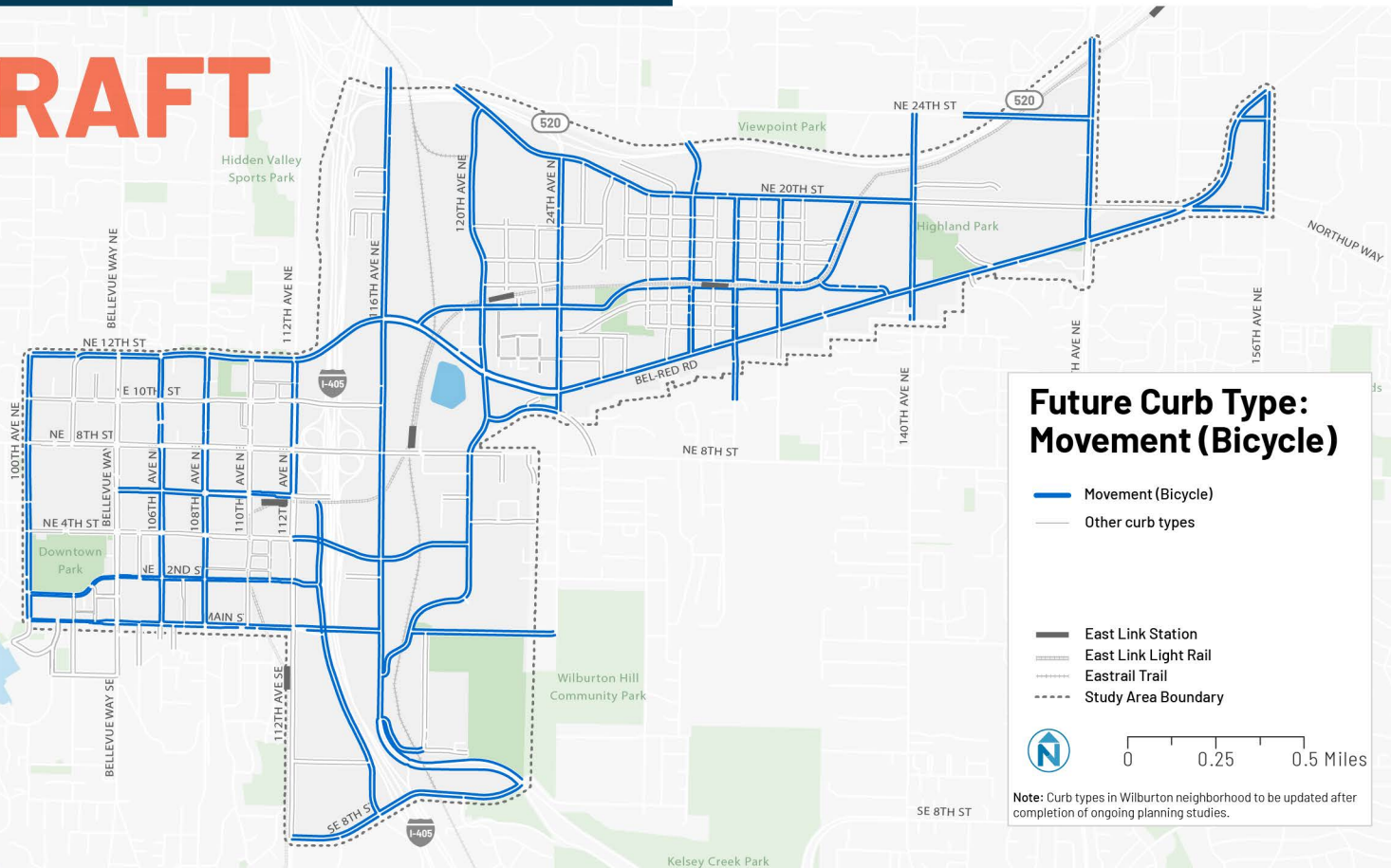
References:

- Mobility Implementation Plan – Level of Traffic Stress (LTS) Map
- Bellevue Pedestrian-Bicycle Plan – Bicycle Project Map
- BelRed Streetscape Plan – Mobility Network

Example Diagram:



DRAFT



Curb Type Overview: Movement (Transit)

Description:

- Curbside lane may include dedicated transit facility, such as a bus lane, BAT lane, or peak hour bus lane
- May include transit stops or stations

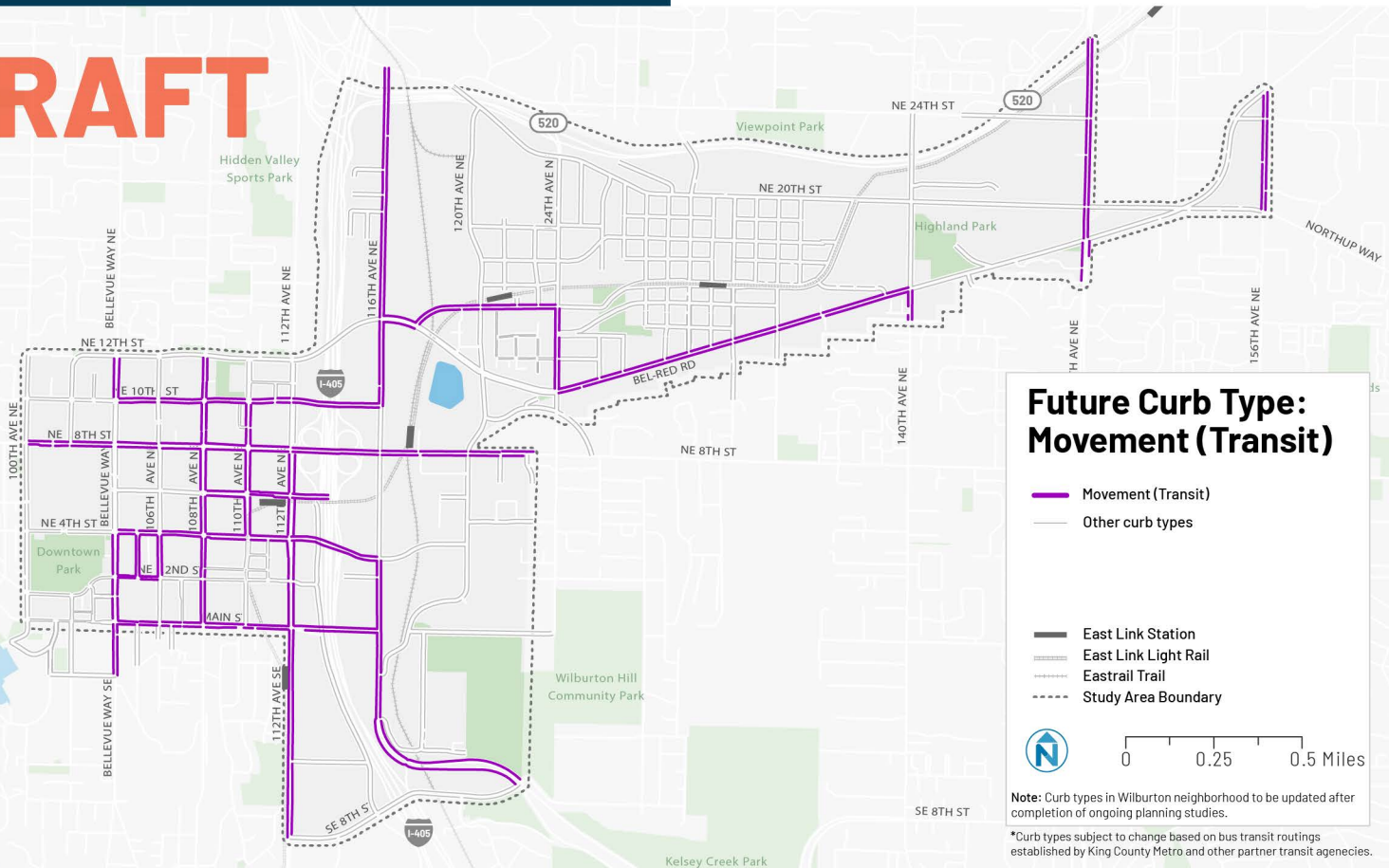
References:

- Mobility Implementation Plan – Frequent transit network
- Bellevue Comprehensive Plan Downtown Element – Transit priority
- Transit Master Plan – Frequent transit network

Example Diagram:

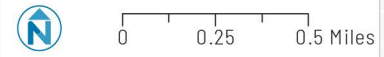


DRAFT



Future Curb Type: Movement (Transit)

- Movement (Transit)
- Other curb types
- East Link Station
- East Link Light Rail
- Eastrail Trail
- Study Area Boundary



Note: Curb types in Wilburton neighborhood to be updated after completion of ongoing planning studies.

*Curb types subject to change based on bus transit routings established by King County Metro and other partner transit agencies.

Curb Type Overview: Access

Description:

- Curbside lane may include loading zones, passenger pick-up/drop-off zones, short-term parking, bicycle parking and landscaping that allows access between the curbside and the sidewalk

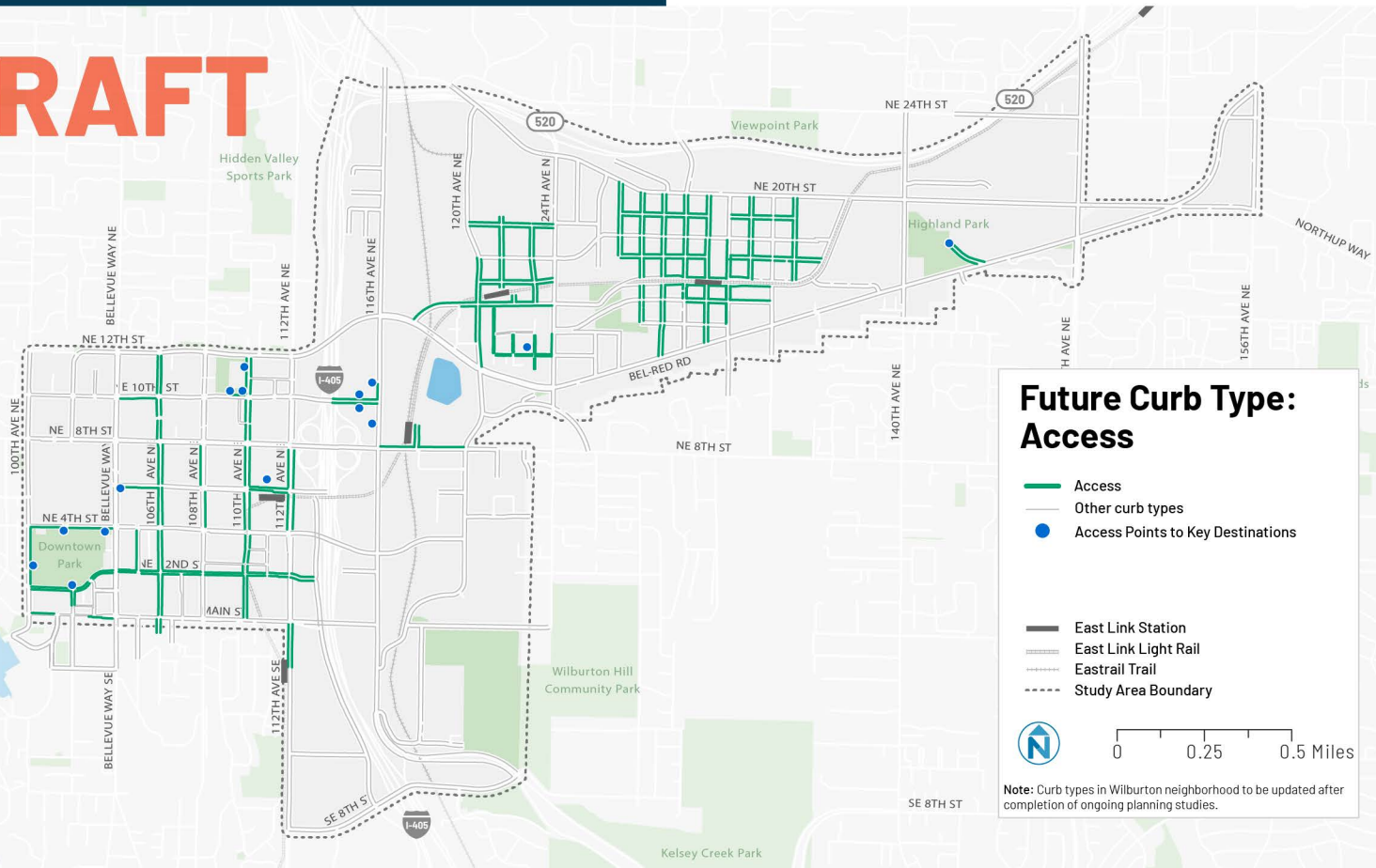
References:

- BelRed Streetscape Plan – Shopping streets and local streets
- Locations within 1 block from major transit stops and key destinations
- Locations with an existing loading zone or pick-up/drop-off zone
- Minor arterial streets not identified with the MIP Layered Network

Example Diagram:



DRAFT



Future Curb Type: Access

- Access
- Other curb types
- Access Points to Key Destinations

- East Link Station
- East Link Light Rail
- Eastrail Trail
- Study Area Boundary



0 0.25 0.5 Miles

Note: Curb types in Wilburton neighborhood to be updated after completion of ongoing planning studies.

Curb Type Overview: Place

Description:

- Curbside area* may be used for dining, parklets, and programmed uses
- Adjacent uses may include public spaces, plazas, parks, civic buildings, institutions, and shopping and dining destinations

References:

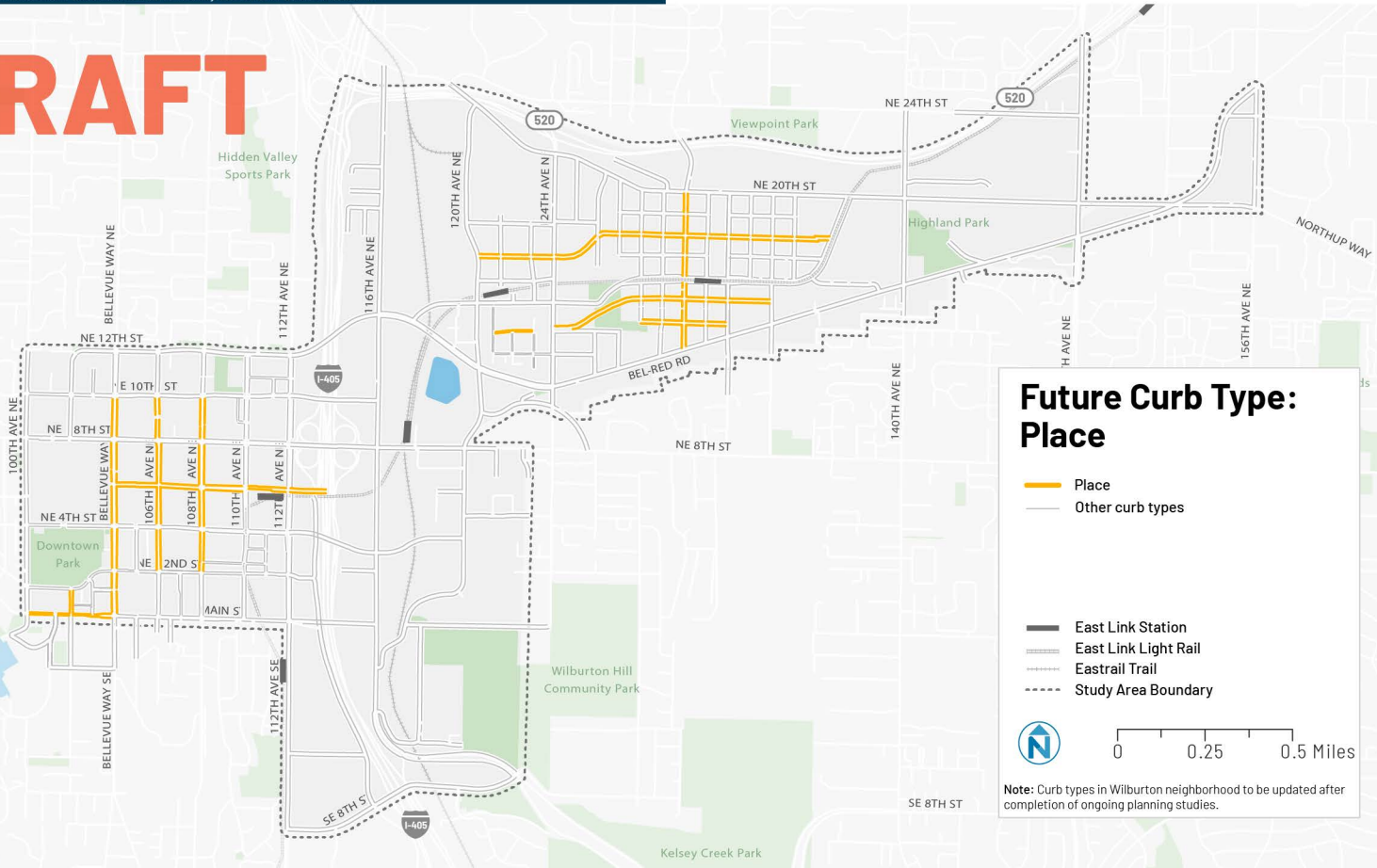
- BelRed Streetscape Plan – Green, Shopping, and Pedestrian Streets
- Grand Connection Framework
- Bellevue Comprehensive Plan Downtown Element – Signature streets and pedestrian bias

*Curbside area includes curbside lane, amenity zone, and sidewalk zone

Example Diagram:



DRAFT



Future Curb Type: Place

- Place
- Other curb types

- East Link Station
- East Link Light Rail
- Eastrail Trail
- Study Area Boundary

0 0.25 0.5 Miles

Note: Curb types in Wilburton neighborhood to be updated after completion of ongoing planning studies.

Curb Type Overview: Storage (Auto)

Description:

- Curbside may be used for long-term parking (more than 30 minutes) which may be time-limited, or priced

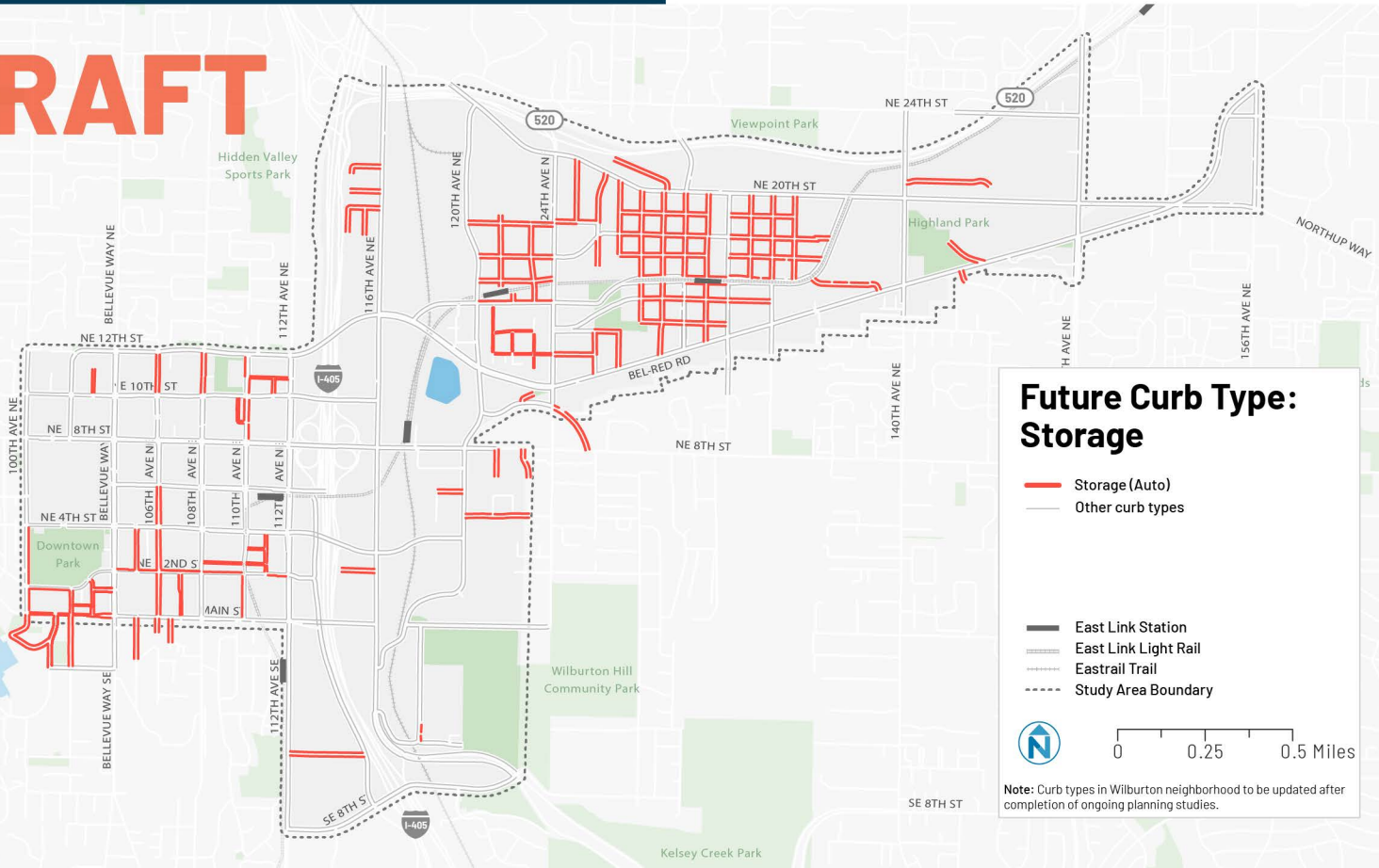
References:

- Existing on-street parking areas
- BelRed Streetscape Plan - Required on-street parking areas
- Local streets less than one block long

Example Diagram:



DRAFT



Future Curb Type: Storage

- Storage (Auto)
- Other curb types

- East Link Station
- East Link Light Rail
- Eastrail Trail
- Study Area Boundary



0 0.25 0.5 Miles

Note: Curb types in Wilburton neighborhood to be updated after completion of ongoing planning studies.

Curb Type Overview: Storage (Transit)

Description:

- Curbside lane may include dedicated space for transit vehicle layover
- May be located near amenities for transit operators such as seating, restrooms, or a break area

References:

- King County Metro Transit Layover Study
- Proximity to East Link Light Rail stations

Example Diagram:



DRAFT

