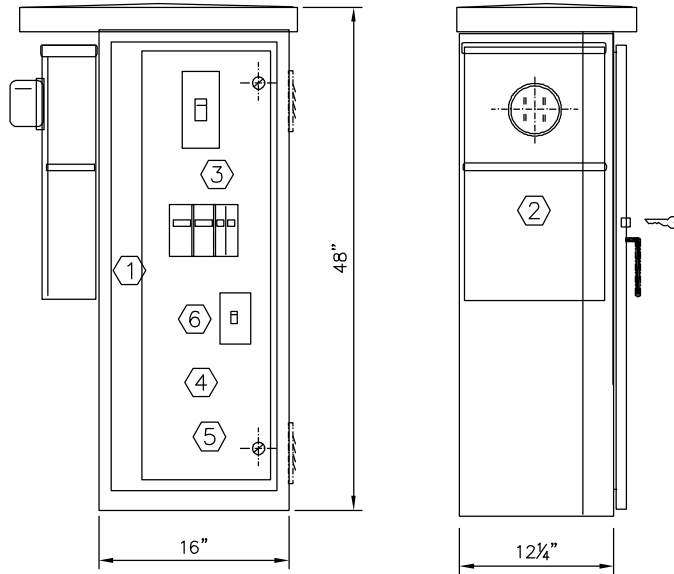


CABINET DESIGNATION
CITY OF BELLEVUE "TINY" CABINET

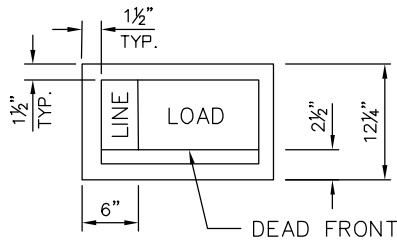
SKYLINE SERIES #65348

1 REQUIRED



FRONT ELEVATION
(DOOR NOT SHOWN)

SIDE ELEVATION



FOOTPRINT

CABINET:

CONSTRUCTION:

NEMA TYPE 3R, OUTDOOR PADMOUNT, 3/8" 5052-H32 ALUMINUM CONSTRUCTION, 2 SCREENED AND GASKETED VENTS, REMOVABLE EQUIPMENT MOUNTING PAN, CABINET GROUND WITH MINIMUM BONDING WIRE TO NEUTRAL.

DOORS:

HEAVY-DUTY CONCEALED HINGES (LIFT-OFF TYPE), STAINLESS STEEL VAULT HANDLE WITH ROLLER RODS THAT PROVIDE 3-POINT COMPRESSION ON CLOSED CELL NEOPRENE GASKET, "BEST" LOCK AND PADLOCK TABS ON DOOR

DEADFRONT:

HINGED AND SECURED WITH QUARTER-TURN FASTENERS

FINISH:

MILL FINISH ALUMINUM, DEADFRONT AND WIREWAY COVER WHITE

COMPONENT SCHEDULE:

- ① SERVICE WIREWAY
- ② METER BASE: 200A, 4 JAW, MANUAL BYPASS, B-LINE U264, W/ 5TH JAW
- ③ PANELBOARD: 120/240 VAC, 125 AMP COPPER BUS, 1 PHASE, 3 WIRE, 6 CKT, FULLY RATED AT 10K AIC, WITH ENGRAVED NAME PLATES
MAIN BREAKER: 100AMP, 2 POLE, EATON QC2100
BRANCH BREAKERS, BOLT ON, EATON TYPE BAB:
2-20/2 LIGHTING 1, 2
1-20/1 RRFB
1-15/1 CONTROL
- ④ CONTACTOR: LIGHTING RATED, 30A, 4 POLE, 120V COIL, SQD 8910DPA34V02U1
- ⑤ TERMINAL BLOCK FOR FIELD WIRE CONNECTION TO REMOTE PHOTO CELL
- ⑥ PHOTO-CELL BYPASS SWITCH

UL LISTED PER STANDARD #508A
SUITABLE FOR USE AS SERVICE ENTRANCE



"TINY" SERVICE CABINET DETAIL

DRAWING NUMBER	SL-221-1
SCALE	NONE
REVISION DATE	2/22
DEPARTMENT	TRANS