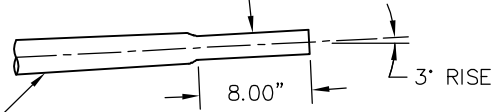


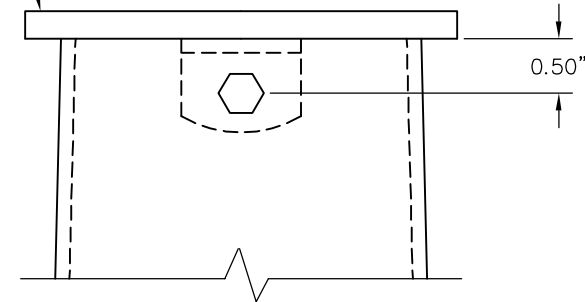
8.00" NOMINAL STRAIGHT SECTION REFORMED TO APPROX. 2.38" O.D.

TAPERING SECTION, SEE DETAIL 2, STD DWG SL-102-1



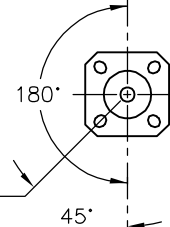
DETAIL 3 - ARM END

SQUARE, 0.229" THICK COMMERCIAL QUALITY HOT ROLLED MILD STEEL CAP. CAP HELD IN PLACE WITH A MOUNTING CLIP AND 0.25" STAINLESS STEEL HEX HEAD SCREW. CAST ALUMINUM POLE TOP CAP WITH SET SCREWS ALSO ACCEPTABLE.



DETAIL 4 - POLE CAP PLATE

- 6"X11" HANDHOLE @ 1'-6" FROM BOTTOM OF HOLE
- 4"X6" HANDHOLE @ 15'-0" FROM BOTTOM OF POLE
- 4"X6" HANDHOLE @ 10'-4" FROM TOP OF POLE
- 2.5"X5" HANDHOLE @ 1'-0" FROM TOP OF POLE



ANCHOR BOLT SLOT

ALL ANGLES MEASURED CLOCKWISE FROM LUMINAIRE ARM

- 4"X6.5" HANDHOLE @ 1'-6" FROM BOTTOM OF POLE
- FESTOON OUTLET FRAME @ 11'-7" FROM BOTTOM OF POLE
- 2.5"X5" HANDHOLE @ 6'-1" FROM TOP OF POLE
- INTERNAL DIVIDER
- LUMINAIRE ARM

DETAIL 5 - RADIAL INDEX



STEEL ROADWAY LIGHTING POLE DETAILS  
(SMALL WIRELESS FACILITY COMPATIBLE)

DRAWING NUMBER	SL-103-1
SCALE	NONE
REVISION DATE	6/21
DEPARTMENT	TRANS