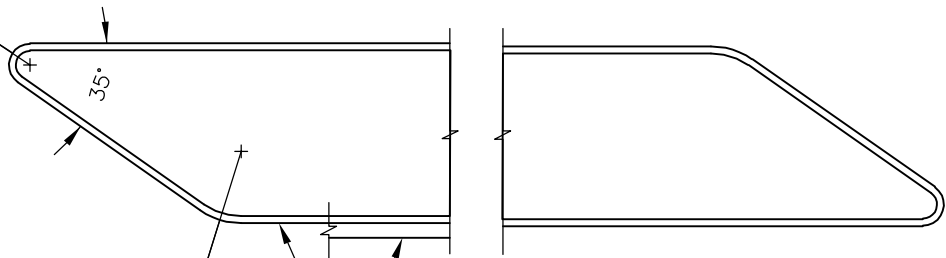


R=1.5'
FACE OF
CURB (TYP.)



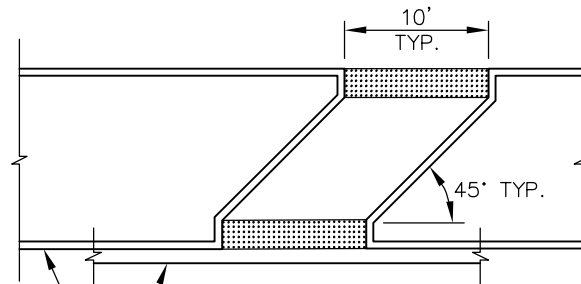
R=5'
FACE OF
CURB (TYP.)

CURB OR CURB
AND GUTTER

MEDIAN NOSE LAYOUT

NOTES:

1. FOR TYPICAL CHANNELIZATION AT MEDIAN ISLAND, SEE STD. DWG. NO. CH-220-1.
2. IF MEDIAN IS LESS THAN 8' IN WIDTH, ANGLING OF CROSSWALK REFUGE MAY NOT BE REQUIRED, AS DETERMINED BY REVIEW ENGINEER.



CURB OR CURB
AND GUTTER

AT-GRADE CROSSWALK REFUGE



City of
Bellevue

MEDIAN ISLAND DETAILS

DRAWING NUMBER	RC-121-1
SCALE	NONE
REVISION DATE	12/22
DEPARTMENT	TRANS