

KELSEY CREEK FARM

Promoting learning
opportunities in a
farm environment



See inside
for fun
coloring!



SEPT-DEC 2022



Kelsey Creek Farm provides the community an opportunity to cross the threshold of urban living into an agricultural experience, while maintaining the historic integrity of the farm, through interpretive displays and education. Our programs foster creativity and active play. The Farm's two historical barns sit prominently on the crest of a hill. There is no entrance fee; however, we welcome and appreciate your donations.

When visiting any of Bellevue's parks, all dogs and other pets must be kept on a leash. Out of consideration for our farm animals' health and wellbeing, please observe all posted signs prohibiting pets from the barnyard.

**FARM ANIMALS IN THE PASTURES
DAILY FROM 9 a.m.-3 p.m.
365 DAYS A YEAR**



Child and Family Activities

Little Farmers

Join us for hands-on fun in the barn and barnyard with your 2-3-year-old. Classes will feature various farm animals, seasonal themes, barn chores, feeding and petting farm animals, crafts, parallel play, and taking a pony ride—all the fun is right here! Children team up with a parent/adult to actively participate in this class. Come dressed to play inside and outside and get dirty! Siblings under two are welcome in front or back packs. Each session has different activities, animals and some activities will overlap but many will be new.

Ages: 2-3

Fees: \$78 (R) \$93 (N)

Hours/Dates: 10-11:30 a.m.

Sept. 6-20 (Tuesday)
Sept. 7-21 (Wednesday)
Sept. 8-22 (Thursday)
Oct. 11-25 (Tuesday)
Oct. 12-26 (Wednesday)
Oct. 13-27 (Thursday)
Nov. 1-15 (Tuesday)
Nov. 2-16 (Wednesday)
Nov. 3-17 (Thursday)
Nov. 29-Dec. 13 (Tuesday)
Nov. 30-Dec. 14 (Wednesday)
Dec. 1-15 (Thursday)



Farm Explorers

Join us for a farm adventure featuring animal care, barn chores, and baking yummy snacks. This drop-off program is designed for the independent 4-6-year-old. Curriculum is integrated with seasonal themes, arts and crafts, stories, and animal interactions. This class includes a pony ride. Children must be potty trained.

Ages: 4-6

Fees: \$106 (R) \$127 (N)

Hours/Dates: 10 a.m.-12:30 p.m.

Sept. 8-22 (Thursday)
Sept. 12-26 (Monday)
Oct. 10-24 (Monday)
Oct. 13-27 (Thursday)
Oct. 31-Nov. 14 (Monday)

Nov. 3-17 (Thursday)
Nov. 28-Dec. 12 (Monday)
Dec. 1-15 (Thursday)

Farm School

Your child will be immersed in farm life in this after-school program. Activities include interacting with our farm animals, exploring the park's natural habitats, and creating crafts. Your child will take the animals on walks around the farm, see what's growing in the garden, and explore Bellevue's past through the historic buildings at Kelsey Creek Farm.

Ages: 7-9

Fees: \$78 (R) \$94 (N)

Hours/Dates: 2-4 p.m.

Sept. 7-21 (Wednesday)
Oct. 12-26 (Wednesday)
Nov. 2-16 (Wednesday)

Little Scientists

Join us for science experiments on the farm! You and your child will explore chemistry and color concepts with tactile crafts like puffy painting, our very own color laboratory, and making a colorful volcanic eruption. Outside, we will get to interact with one of our farm animals. This program includes a pony ride. Adult/child teams only.

Ages: 2-3

Hours/Dates: 10-11:30 a.m.

3-week session

Fees: \$55 (R) \$66 (N)

Nov. 4-18 (Friday)

4-week sessions

Fees: \$68 (R) \$81 (N)

Sept. 9-23 (Friday)

Oct. 14-28 (Friday)

Dec. 2-16 (Friday)



Science Explorers

Come to the farm and have some fun with biology and chemistry! In this drop-off program, children will get to interact with a farm animal while we learn about what they eat and why, and we'll take a nature walk to find mushrooms and native plants. In the lab, we'll look at mushroom spores up close and learn about some of the smallest forms of life, and do a craft with a chemical reaction. This class is designed for the independent 4-6-year-old. This class includes a pony ride. Children must be potty trained.

Ages: 4-6

Fees: \$113 (R) \$135 (N)

Hours/Dates: 10 a.m.-12:30 p.m.

Sept. 6-20 (Tuesday)

Oct. 11-25 (Tuesday)

Nov. 1-15 (Tuesday)

Nov. 29-Dec. 13 (Tuesday)

Young Scientists

Join us for science on the farm! Each day we will focus on a different subject. We'll look at chicken and duck feathers and learn how birds fly, learn about our local mushrooms and their life cycles, identify our native plants and dissect flowers, learn how bugs aren't so scary, and more! Your child will learn how to use a microscope and will get to see for themselves some of the smallest forms of life.

Ages: 7-10

Fees: \$78 (R) \$94 (N)

Hours/Dates: 2-4 p.m.

Sept. 7-21 (Wednesday)

Oct. 12-26 (Wednesday)

Nov. 2-16 (Wednesday)

Nov. 30-Dec. 14 (Wednesday)



Little Pioneers

Come to the farm with your little one and learn all about pioneer history! Each week, your kiddo will learn all about different aspects of pioneer life and meet some of the animals on the farm. This class includes a pony ride. Adult/child teams only.

Ages: 2-3

Fees: \$78 (R) \$93 (N)

Hours/Dates: 10-11:30 a.m.

Sept. 12-26 (Monday)

Oct. 10-24 (Monday)

Oct. 31-Nov. 14 (Monday)

Nov. 28-Dec. 12 (Monday)



Pioneer Explorers

Come and learn all about pioneer history on the farm at this drop off program for the independent 4–6-year-old! Each week, your kiddo will learn all about different aspects of pioneer life and meet some of the animals on the farm. This class includes a pony ride.

Ages: 4-6

Fees: \$123 (R) \$147 (N)

Hours/Dates: 10 a.m.-12:30 p.m

Sept. 9-23 (Friday)

Oct. 14-28 (Friday)

Nov. 4-18 (Friday)

Dec. 2-16 (Friday)

Little Vet School: Cat

Students will role-play the key responsibilities of a veterinarian and learn how to care for a cat. These future veterinarians will learn how to give a tip-to-tail exam, suture lacerations, give immunizations, discover the elements that make up a cat's blood, explore cat digestion, and understand cat body language. Each student will receive a lab coat, plush cat and diploma as a graduate of Little Veterinarian School upon completion of the course along with supplies for each class. This program is designed for the independent 4-6-year-old. Participants must be potty trained. This class is taught by Little Medical School Seattle staff.

Ages: 4-6

Fees: \$105 (R) \$126 (N)

Hours/Dates: 10:30-11:30 a.m.

Sept. 13-27 (Tuesday)

Little Doctor School: Heart and Lungs

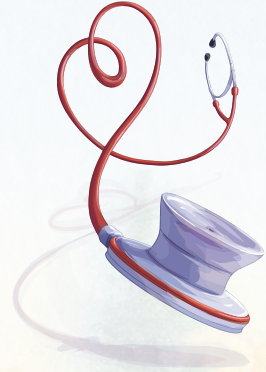
Students will role-play a doctor, perform a physical exam, use real medical tools, explore the primary functions of the heart. This session will focus on the heart and lungs. This program is designed for the independent 4-6-year-old. Participants must be potty trained. This program is taught by Little Medical School Seattle staff.

Ages: 4-6

Fees: \$105 (R) \$126 (N)

Hours/Dates: 10:30-11:30 a.m.

Sept. 14-28 (Wednesday)



Little Vet School: Dog

Students will role-play the key responsibilities of a veterinarian and learn how to care for a dog. These future veterinarians will learn how to remove ticks, give immunizations, suture lacerations, read an x-ray, design their own veterinarian office, and explore dog digestion. Each student will receive a lab coat, plush dog, and diploma as a graduate of Little Veterinarian School upon completion of the course along with supplies for each class. This program is designed for the independent 4-6-year-old. Participants must be potty trained. This class is taught by Little Medical School Seattle staff.

Ages: 4-6

Fees: \$140 (R) \$168 (N)

Hours/Dates: 10:30-11:30 a.m.

Oct. 4-25 (Tuesday)



Little Doctor School: Bones

Students will role-play a doctor, perform a physical exam, use real medical tools, explore the primary functions of the bones. This program is designed for the independent 4-6-year-old. Participants must be potty trained. This program is taught by Little Medical School Seattle staff.

Ages: 4-6

Fees: \$140 (R) \$168 (N)

Hours/Dates: 10:30-11:30 a.m.

Oct. 5-26 (Wednesday)

Little Vet School: Horse

Students can learn all about horses and their care from the newest Little Medical School Equine program. Students will adopt and name their plush horse and learn the anatomy and maintenance of a horse. They will also learn basic horse nutrition, riding styles, gaits and role-play and basic key responsibilities of an equine veterinarian. This program is designed for the independent 4-6 year old. Participants must be potty trained. This class is taught by Little Medical School Seattle staff.

Ages: 4-6

Fees: \$140 (R) \$168 (N)

Hours/Dates: 10:30-11:30 a.m.

Nov. 1-22 (Tuesday)

Little Doctor School: Digestion and Nutrition

Students will role-play a doctor, perform a physical exam, use real medical tools, explore the primary functions of the digestive system. This program is designed for the independent 4-6 year old. Participants must be potty trained. This program is taught by Little Medical School Seattle staff.

Ages: 4-6

Fees: \$140 (R) \$168 (N)

Hours/Dates: 10:30-11:30 a.m.

Nov. 2-23 (Wednesday)

Private Trail Rides

Your child will get to ride one of our adorable ponies on a private ride through the trails at Kelsey Creek Farm! Your child will learn the basics of horseback riding and experience the farm in a whole new way! Parents/guardians may choose to walk along, but no strollers allowed. Wednesday "Private Trail Rides Waitlist" available as separate program; adding to the waitlist will add you to the waitlist for all sessions.

Ages: 2-5

Fees: \$20 (R) \$24 (N)

Hours/Dates: See register@bellevuewa.gov for available dates and hours.

Baking Bonanza

Are you interested in baking? Come learn to bake a different treat each week, master baking basics, and enjoy the delicious results! We'll make cookies, cakes, and more, and discuss important foundational methods for the tasty art of baking. Recipe cards included.

Ages: 10-15

Fees: \$35 (R) \$42 (N)

Hours/Dates: 2-3:30 p.m

Oct. 12 – Nov. 2 (Wednesday)

Potato Power

Looking for something to do on this BSD no-school day? Learn to cook! If you can bake a potato, you can make lots of other delicious dinners! We'll bake potatoes (so easy!) and turn them into two different tasty dishes that you can take home and easily reproduce. Recipe cards included.

Ages: 13-17

Fees: \$45 (R) \$54 (N)

Hours/Dates: 10 a.m.-12 p.m

Oct. 14 (Friday)

Farm Animal Pen Pals

Are you curious about what Kelsey Creek Farm's animals are up to? Our popular pen pal program is back with new animals and new letters! Sign up to receive a letter in the mail from one of our farm animals. If you send a letter back to your animal, your animal will reply with a custom letter! For each purchase, you will receive a photograph of your animal, a self-addressed envelope for your reply letter, and up to two letters from your animal to you!

Ages: all ages welcome, recommended for ages 4-10

Fees: \$8 (R) \$10 (N)

Animal Choices:

Paisley the Sheep

Hazel the Bunny

Jackson the Cat

Benny the Pony



Weekend Workshops

Salmon Stuff

If we have a local fish, it must surely be the salmon! Come learn about the history of salmon in this region, the salmon life cycle, and practice “fishing”. We’ll have a fishy snack and experience some of the challenges of swimming upstream! Adult/child teams only.

Ages: 4-7

Fees: \$25 (R) \$30 (N)

Hours/Dates: 10-11 a.m.

Sept. 4 (Sunday)

Ages: 2-3

Fees: \$25 (R) \$30 (N)

Hours/Dates: 10-11a.m

Sept. 11 (Sunday)

Firs on the Farm

The trees at the farm have a story to tell! In this class, we’ll learn about Kelsey Creek Farm’s most common tree, the Douglas-fir. We’ll learn about their lifecycle, why they’re important, and how to plant their seeds. You’ll even get to plant your own seeds to take home. Come dressed for the weather. Adult/child teams only.

Ages: 4-8

Fees: \$25 (R) \$30 (N)

Hours/Dates: 1-2 p.m.

Sept. 4 (Sunday)

Botany Blast

Have you ever walked around your neighborhood and looked carefully at the plants? Come and take a nature walk with a goat at Kelsey Creek and learn to identify native and invasive plants, find edible and medicinal plants, and bring back some of the leaves and stems you gather to learn how to cyanoprint on paper.

Ages: 7-10

Fees: \$25 (R) \$30 (N)

Hours/Dates: 10-11 a.m.

Sept. 10 (Saturday)

Ages: 4-6

Hours: 1-2 p.m.

Fees: \$25 (R) \$30 (N)

Oct. 15 (Saturday)

Ages: 7-10

Hours: 10-11 a.m.

Fees: \$25 (R) \$30 (N)

Oct. 15 (Saturday)

Birds of a Feather

Ever wonder about the birds that live in your neighborhood? Come to the farm and learn how to identify birds by their song and how they look. We'll take a nature walk and see what different wild birds we can find, visit birds on the farm, and learn how to tell what a bird eats based on the shape of its beak. We'll look at different feather types under a microscope, and learn about bird evolution—did you know birds are dinosaurs? Later, we'll do a bird-based craft and play "Pin the Feather on the Dinosaur". Some activities will be different, and some will repeat.

Ages: 7-10

Fees: \$25 (R) \$30 (N)

Hours/Dates: 1-2 p.m.

Sept. 10 (Saturday)

Hours/Dates: 10-11 a.m.

Oct. 22 (Saturday)

Around the World on a Farm

The plants and animals at Kelsey Creek Farm were domesticated around the world. In this class, you'll visit our garden and pet our farm animals on a tour designed to teach children about the domestication of farm animals and the places around the world where they came from. You'll see domestic plants growing in the garden, learn about which animals were domesticated in Asia, the Middle East, and Africa, and see one of the few species domesticated in North America.

Adult/child teams only.

Ages: 4-8

Fees: \$25 (R) \$30 (N)

Hours/Dates: 1-2 p.m.

Sept. 11 (Sunday)



Pioneer Play

When it starts to get cold and wet, we like to stay inside more and watch TV or read books. Do you ever wonder about what pioneers did for fun in the fall? Come learn about how the pioneers played!

Adult/child teams only.

Ages: 4-6

Fees: \$25 (R) \$30 (N)

Hours/Dates: 10-11 a.m.

Sept. 17 (Saturday)

Fall Fun on the Farm

The trees are starting to change colors and drop their leaves! Do you ever wonder why this happens? Come learn about the life cycle of a tree, make a fun leaf-themed craft and visit some friends at Kelsey Creek Farm! Adult/child teams only.

Ages: 4-6

Fees: \$25 (R) \$30 (N)

Hours/Dates: 1-2 p.m.

Sept. 17 (Saturday)

Travels with Trains

Does your child love trains? In this class, your child will get to operate a working model train, make a train-themed craft, and listen to a train story. We'll also learn how trains helped people in Bellevue more than 100 years ago. Adult/child teams only.

Ages: 4-8

Fees: \$25 (R) \$30 (N)

Hours/Dates: 1-2 p.m.

Sept. 18 (Sunday)

Pioneer Fall Harvest

It's fall, so it's time to harvest the garden! You and your child will pick veggies from the garden, grind wheat into flour, and plant cover crops for the coming winter. We'll learn about historic farming in our log cabin built in 1888 and visit some of our friendly farm animals.

Adult/child teams only.

Ages: 4-8

Fees: \$25 (R) \$30 (N)

Hours/Dates: 1-2 p.m.

Sept. 25 (Sunday)

Dinotastic

Is your child a dinosaur fan? Did you know that some of the animals on our farm have dinosaurs as distant ancestors? Come enjoy lots of dino fun with your toddler as we play dinosaur games, learn more about these majestic creatures and their descendants and go on an "archeological" dig! Adult/child teams only.

Ages: 2-3

Fees: \$25 (R) \$30 (N)

Hours/Dates: 10-11 a.m.
Oct. 9 (Sunday)

Ages: 4-7

Fees: \$25 (R) \$30 (N)

Dates/Hours: 1-2 p.m.
Oct. 16 (Sunday)

Pumpkins and Pals

What do we see a lot of in the fall? If you guessed pumpkins, good guess! Come with your kiddo and learn about pumpkins! We will find out which of our animal pals at Kelsey Creek like to snack on them. You will also get to take home your own jack-o-lantern craft! Adult/child teams only.

Ages: 2-3

Fees: \$25 (R) \$30 (N)

Hours/Dates: 10-11 a.m.
Oct. 15 (Saturday)

Ages: 4-6

Fees: \$25 (R) \$30 (N)

Hours/Dates: 1-2 p.m.
Oct. 15 (Saturday)

Spectacularly Spooky

Boo! Did I scare you? We like to have spooky fun at the farm, and we would love for you and your little one to join us! Come create a not-too-creepy craft, find some spooky spider webs, and trick or treat around the farm! Costumes encouraged. Adult/child teams only.

Ages: 2-3

Fees: \$25 (R) \$30 (N)

Hours/Dates: 10-11 a.m.
Oct. 22 (Saturday)

Ages: 4-6

Fees: \$25 (R) \$30 (N)

Hours/Dates: 1-2 p.m.
Oct. 22 (Saturday)



Dino-Chickens

Let's learn all about dinosaur groups, and how dinosaurs became chickens! We'll meet and feed our farm chickens, talk about their behavior, the way they move, their vision, and look at the different breeds we have on the farm and what makes them different from each other. We'll compare their feathers under a microscope, learn about feather evolution, how feathered dinosaurs may have looked, and what feathers are good for besides flying. Later, we'll do a bird-themed craft and play "Pin the Feather on the Dinosaur".

Ages: 7-10

Fees: \$25 (R) \$30 (N)

Hours/Dates: 1-2 p.m.

Sept. Oct. 22 (Saturday)

Bearable

Did you know that bears used to roam our nearby woods? Bring your toddler and join us to learn about the history of local bear populations, try acting and snacking like a bear, and enjoy bear crafts and games! Adult/child teams only.

Ages: 2-3

Fees: \$25 (R) \$30 (N)

Hours/Dates: 10-11 a.m.

Oct. 23 (Sunday)

Ages: 4-7

Fees: \$25 (R) \$30 (N)

Hours/Dates: 1-2 p.m.

Oct. 30 (Sunday)

Tractor Tales

Bring your tractor-loving child to this fun tractor experience! Your child will get to ride toy tractors, sit in the seat of our real tractor for a photo, and watch the real tractor in action. We will do a tractor-themed craft and learn all about what tractors do on farms. Adult/child teams only.

Ages: 4-8

Fees: \$25 (R) \$30 (N)

Hours/Dates: 1-2 p.m.

Oct. 23 (Sunday)



Practice in Pioneering

Pioneers had to be self-sufficient and practice many talents in this drop-off class. Come learn some of these crafty pioneer skills! Find out how to hand sew on buttons and make biscuits. You will also get to visit our sheep and practice hand-spinning wool!

Ages: 7-10

Fees: \$25 (R) \$30 (N)

Hours/Dates: 1-2 p.m.

Nov. 5 (Saturday)

My First Soil Science Class

Come explore the world beneath our feet! Your child will learn what soil is made of, how it keeps our planet working, and what animals live in the soil. Then we'll pick up our shovels and visit the farm garden and the compost pile to learn about soil in real-life situations. Your child will also get to create a garden-themed craft to take home. Adult/child teams only.

Ages: 4-8

Fees: \$25 (R) \$30 (N)

Hours/Dates: 1-2 p.m.

Nov. 6 (Sunday)

Better Butter

Are you a fan of butter? Taste how amazing butter is when you make it yourself! We'll test three different ways of making butter, create tasty compound butters, and bake biscuits to enjoy with all our fabulous homemade butters. Recipe cards included.

Ages: 13-17

Fees: \$30 (R) \$36 (N)

Hours/Dates: 1-2 p.m.

Nov. 6 (Sunday)



Creature Comparison

On the farm, we have many different examples of how animals have evolved to fit the life they live and the niche they occupy. Join us to interact with our animals and learn how beak shape, pupil shape, eye orientation, coat coloration, digestion type, and more are all adaptations animals have because of the strategies they use to survive. You'll also get to do a farm chore to help the animals and give them yummy treats.

Ages: 7-10

Fees: \$25 (R) \$30 (N)

Hours/Dates: 10-11 a.m.

Nov. 12 (Saturday)

Quilts and Tails

From the fabrics used to make them to specific patterns with different meanings, quilts have long been used to tell stories. Come learn about different ways a quilt can tell a tale and meet some furry friends who have tails. Make your very own, quilt patch craft. What story will you tell?

Ages: 7-10

Fees: \$25 (R) \$30 (N)

Hours/Dates: 10-11 a.m.

Nov. 12 (Saturday)

Hibernation Station

It's getting cold outside! Ever wonder what animals do for the winter? Come to the farm and learn all about how we keep our animals warm, how some animals hibernate, and where the birds and bugs go when it gets too cold. We'll visit the sheep and admire their home-grown winter coats. Inside, we'll build our own hibernation stations, gather "food" for the winter, and drink hot cocoa. Adult/child teams only.

Ages: 4-8

Fees: \$25 (R) \$30 (N)

Hours/Dates: 1-2 p.m.

Nov. 12 (Saturday)



Raccoon Roundup

Have you seen a raccoon lately? Many of them live in our neighborhoods. Come with your toddler and learn more about these resourceful and adaptable animal neighbors, impersonate a raccoon, and enjoy raccoon snacks and crafts. Adult/child teams only.

Ages: 2-3

Fees: \$25 (R) / \$30 (N)

Dates/Hours: 10-11 a.m.

Nov. 13 (Sunday)

Ages: 4-7

Fees: \$25 (R) / \$30 (N)

Dates/Hours: 10-11 a.m.

Nov. 20 (Sunday)

Grateful for Goats

There's a lot to be thankful for at Kelsey Creek Farm! You and your child will make a Thanksgiving treat for the goats, spend some time with one of our bunnies, and create a Thanksgiving-themed craft to take home. Adult/child teams only.

Ages: 4-8

Fees: \$25 (R) \$30 (N)

Hours/Dates: 1-2 p.m.

Nov. 20 (Sunday)

Winter Wonderland

In the Pacific Northwest, we don't get much snow. Instead, we have to make our own snowy fun! Come to Kelsey Creek with your little one and make wonderfully wintery crafts, visit some furry animals who know how to keep warm in the snow, and warm up with some hot cocoa! Adult/child teams only.

Ages: 2-3

Fees: \$25 (R) \$30 (N)

Hours/Dates: 10-11 a.m.

Dec. 10 (Saturday)

Ages: 4-6

Fees: \$25 (R) / \$30 (N)

Dates/Hours: 1-2 p.m.

Dec. 10 (Saturday)



Winter is Coming!

Winter is on the way! How do things change on the farm as it gets colder? How do animals prepare for winter? Come see for yourself and learn the tips and tricks our animal friends use to get ready for cold weather! Adult/child teams only.

Ages: 2-3

Fees: \$25 (R) \$30 (N)

Hours/Dates: 10-11 a.m.

Dec. 11 (Sunday)

Ages: 4-7

Fees: \$25 (R) / \$30 (N)

Dates/Hours: 1-2 p.m.

Dec. 18 (Sunday)

Cats and Cows

Sometimes, animals make friends that surprise us. Come to Kelsey Creek with your little one and learn about cats and cows and the friendship they share! Meet the cows, go on a hunt for Jackson the farm cat, and make a cow cat craft! We might even get to give Jackson a treat! Adult/child teams only.

Ages: 2-3

Fees: \$25 (R) \$30 (N)

Hours/Dates: 10-11 a.m.

Dec. 17 (Saturday)

Ages: 4-6

Fees: \$25 (R) / \$30 (N)

Dates/Hours: 1-2 p.m.

Dec. 17 (Saturday)



Winter Break Camps and Programs

Winter Break Mini Camp

Spend your winter break exploring Kelsey Creek Farm, meeting farm animals, playing active games, creating crafts, and making new friends. Experienced staff will provide a safe and supportive environment in a small group setting.

Ages: 4-6

Fees: \$190 (R) \$228 (N)

Hours/Dates: 9 a.m.-1 p.m.

Dec. 19-23 (Monday-Friday)

Fees: \$152 (R) \$183 (N)

Hours/Dates: 9 a.m.-1 p.m.

Dec. 27-30 (Tuesday-Friday)

Farmer for a Day

Your child will spend the day meeting our animals, doing crafts, and exploring the farm. Activities will include taking a pony on a walk, making chicken treats, and learning all about how farms work. Please pack a lunch, a snack, and a water bottle for your child. This program will include outdoor activities, so please dress for the weather.

Ages: 7-10

Fees: \$55 (R) \$66 (N)

Hours/Dates: 9:30 a.m.-3 p.m.

Dec. 19 (Monday)



Pioneer for a Day

Your child will spend the day learning about Bellevue's history and exploring how farms worked more than 100 years ago. Activities will include preparing animal treats, preparing the garden for winter, and touring the historic buildings at Kelsey Creek Farm. Your child will learn about pioneer life and create a craft to take home. Please pack a lunch, a snack, and a water bottle for your child. This program will include outdoor activities, so please dress for the weather..

Ages: 7-10

Fees: \$55 (R) \$66 (N)

Hours/Dates: 9:30 a.m.-3 p.m.

Dec. 20 (Tuesday)

Naturalist for a Day

Your child will spend the day immersed in the forests and wetlands at Kelsey Creek Farm. We'll learn to identify common Pacific Northwest trees and look for signs of beaver in the wetlands. Your child will examine plants under a microscope and learn how plants grow. Each child will create their own nature journal to take home. Please pack a lunch, a snack, and a water bottle for your child. This program will include outdoor activities, so please dress for the weather.

Ages: 7-10

Fees: \$55 (R) \$66 (N)

Hours/Dates: 9:30 a.m.-3 p.m.

Dec. 21 (Wednesday)



Teen Programs

Saturday Morning Teen Farm Volunteers

Assist Kelsey Creek Farm staff with farm chores and learn responsible animal care while earning service hours for school. Participants will be working outside exposed to animals, hay, vegetation, and dust. Participants must be capable of understanding and following directions.

Ages: 15-18

Fees: \$15 (R) \$18 (N)

Hours/Dates: 8:30 a.m.-12 p.m.

Sept. 3-24 (Saturday)

Oct. 8-29 (Saturday)

Nov. 5-26 (Saturday)

Dec. 3-17 (Saturday)

After School Teen Farm Volunteers

Assist Kelsey Creek Farm staff with farm chores and learn responsible animal care while earning service hours for school. Participants will be working outside exposed to animals, hay, vegetation, and dust. Participants must be capable of understanding and following directions.

Ages: 12-18

Fees: \$15 (R) \$18 (N)

Hours/Dates: 1:30-4:30 p.m.

Sept. 7-21 (Wednesday)

Oct. 12-26 (Wednesday)

Nov. 2-30 (Wednesday)

Dec. 7-14 (Wednesday)



Adult Programs

Adult Farm Volunteers

Assist Kelsey Creek Farm staff with farm chores and learn responsible animal care. Participants will be working outside exposed to animals, hay, vegetation, and dust. Participants must be capable of understanding and following directions.

Ages: 18+

Fees: FREE

Hours/Dates: 8:30-10:30 a.m.

Sept. 6-27 (Tuesday)

Sept. 7-28 (Wednesday)

Sept. 8-29 (Thursday)

Oct. 4-25 (Tuesday)

Oct. 5-26 (Wednesday)

Oct. 6-27 (Thursday)

Nov. 1-29 (Tuesday)

Nov. 2-30 (Wednesday)

Nov. 3-17 (Thursday)

Stitch Circle

Bring your current fiber project to Kelsey Creek Farm and work on it while meeting fellow crafters. This is an opportunity to gather, chat, and work on projects while meeting new people, not a formal class. Bring your own materials. Pre-registration encouraged. Questions? Email Stacy at [sstenslie@bellevuewa.gov](mailto:ssstenslie@bellevuewa.gov).

Ages: 18+

Fees: FREE

Hours/Dates: 10 a.m.-12 p.m.

Sept. 12 (Monday)

Oct. 10 (Monday)

Nov. 14 (Monday)

Dec. 12 (Monday)



Better Butter

Are you a fan of butter? Taste how amazing butter is when you make it yourself! We'll test three different ways of making butter, create tasty compound butters, and bake biscuits to enjoy with all our fabulous homemade butters. Recipe cards included.

Ages: 18+

Fees: \$30 (R) \$36 (N)

Hours/Dates: 1-2 p.m.

Sept. 4 (Sunday)

Start Something with Sourdough #1

Have you ever wanted to try your hand at sourdough? Have you tried it, but something went awry? Sourdough starter is good for so much more than just sourdough bread! Learn tips for raising and feeding a starter, and how to make just a few of the delicious treats you can enjoy along the way! Recipe cards included.

Ages: 18+

Fees: \$90 (R) \$108 (N)

Hours/Dates: 5:30-7 p.m.

Sept. 12-15 (Monday-Thursday)

Easy Fancy

Delicious food that looks beautiful doesn't have to be complicated! Each week we'll learn how to make a different easy-to-master dish that is sure to please the discriminating diner, from appetizer to dessert. Recipe cards included

Ages: 18+

Fees: \$180 (R) \$216 (N)

Hours/Dates: 5:30-7 p.m.

Sept. 19-Oct. 10 (Monday)

Start Something with Sourdough #2

Prerequisite: "Start Something with Sourdough #1". By now you've got a lively, ripe starter! Come try even more delicious recipes for that sourdough discard, discuss troubleshooting tips, learn about baking with a banneton, and more. Recipe cards included.

Ages: 18+

Fees: \$45 (R) \$54 (N)

Hours/Dates: 1-4 p.m.

Oct. 23 (Sunday)

Potato Power

If you can bake a potato, you can make lots of other delicious dinners! We'll bake potatoes (so easy!) and turn them into two different tasty dishes that you can take home and easily reproduce. Recipe cards included.

Ages: 18+

Fees: \$45 (R) \$54 (N)

Hours/Dates: 1-3 p.m.

Nov. 13 (Sunday)

Special Events

Farm Fair Event Volunteers

Earn community service hours. Assist with children's activities and other event tasks at our annual Farm Fair. Volunteers need to be able to follow directions, be comfortable in crowds, and be on their feet in all types of weather. Participants must register by September 23, 2022. For more information, email us at kelseycreekfarm@bellevuewa.gov, or call 425-452-7688. No day-of-event registrations will be accepted. All volunteers will be required to complete a Criminal Background check and provide their Social Security number which must be submitted by September 23, 2022. Volunteers working directly with children must be fully vaccinated.

Ages: 15+

Fees: FREE

Hours/Dates: 10 a.m.-6 p.m.

Oct. 1 (Saturday)



Kelsey Creek Farm Fair

Bring your family to the Farm and enjoy our Fall Festival. Event features include tractor-pulled wagon rides, Country Lane Play Area, pick-a-pumpkin already gathered from the vine but in a farm pasture, farm animals, and much more! Free shuttle service from Wilburton Park & Ride and Bannerwood Sports Park. Please note: no pets allowed on shuttle bus or in the barnyard areas. For more information call 425-452-7688 or e-mail kelseycreekfarm@bellevuewa.gov

Ages: all ages welcome

Fees: admission is free, some activities have nominal fees

Hours/Dates: 11 a.m.-4 p.m.

Oct. 1 (Saturday)

Trick or Treat with the Farm Animals

Put on your Halloween costume and come to the farm for a fun mini event! Your child will get to go trick-or-treating with the farm animals and see what costumes they're wearing! You'll also get to decorate a trick-or-treating bag, make a paper plate Jack-O-Lantern, and visit the real pumpkin patch. Snacks will be available for sale separately. This mini event is mostly outdoors so come dressed for the weather.

Ages: 2-10

Fees: \$10 (R) \$12 (N)

Hours/Dates: 1-3 p.m.

Oct. 29 (Saturday)

Holiday Barn Lighting

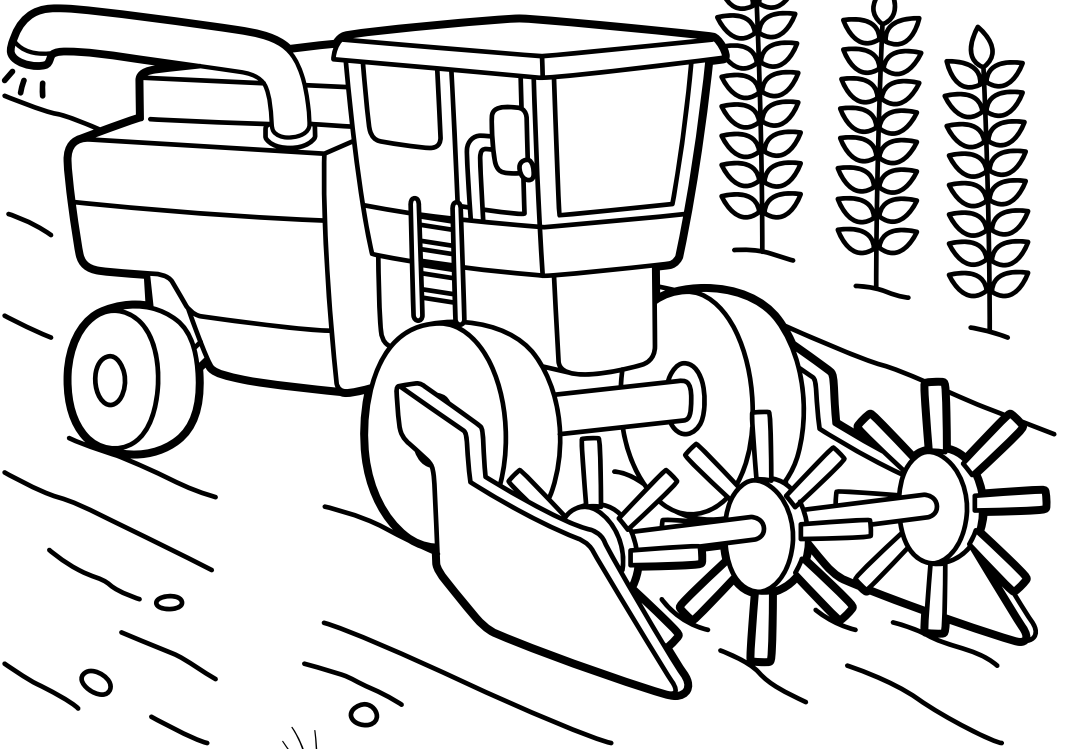
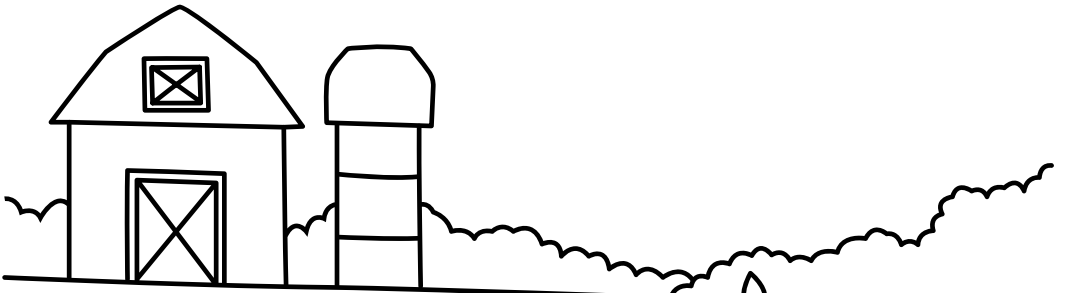
Join us for our 3rd annual barn lighting celebration at Kelsey Creek Farm. Bring the whole family to experience the magic of the farm lit up for the holidays. Enjoy traditional carols, meet resident farm animals decked out in the spirit of the season, and sip hot cocoa. Keep an eye out for Santa, who will be making a special appearance. Join us in making this holiday season memorable as we light up the farm and enjoy this wonderful season of giving. All ages are welcome. No registration required. No entrance fee, some activities may have nominal fees.

Ages: all ages welcome

Fees: admission is free, some activities have nominal fees

Hours/Dates: 4-6 p.m.

Dec. 3 (Saturday)





FARM HISTORY

The farm's history began in 1921, when the Duey Family rented 190 acres and began delivering cream and butter stamped with the name Twin Valley Dairy. In August of 1933 the original barn burned. Mr. Duey, a skilled carpenter, along with some hired hands rebuilt the barn in two weeks. Today, this barn is the smaller of the two barns and is called the Animal Barn. Mr. Duey also built the Red Barn, originally used as a milk house. The second dairy barn was built in 1943-44 by Mr. Michaels, the new owner, (this is the north barn now known as the Education Barn) and the dairy herd was increased in size. After the end of WWII, he sold the farmstead to Ray and Nettie Fisher. The Fishers phased out the dairy operation and began raising Hereford beef cattle. They built the current farm house in 1954 and moved to live on the property.

In 1968 neighbors to the farm began a movement to petition the Bellevue City Council to purchase the property and secure it as a public park. The neighbors' petition succeeded and the City negotiated with the Fisher family to purchase the 80 acres, including the farm house, barns and out buildings. The Fishers sold their farm property to the City at a price much reduced from what they knew that they could get from developers. They did so because they believed in preserving the beauty and legacy of the agricultural buildings and the land.

In 1972 the oldest barn was modified to house an assortment of farm animals for public viewing. The other, larger barn, commonly referred to as the Education Barn, was remodeled inside and used to accommodate a variety of community programs, including children's day camps, art classes, and farm-themed classes, to name just a few.

REGISTER ONLINE!

register.bellevuewa.gov


Scholarships available for
many programs.

(R) RESIDENT / (N) NON-RESIDENT



Kelsey Creek Farm
410 130th Pl SE | Bellevue, WA 98005
425-452-7688
KelseyCreekFarm@bellevuewa.gov



 For alternate formats, interpreters, or reasonable accommodation requests please phone at least 48 hours in advance 425-452-4253 (voice) or email asolomonson@bellevuewa.gov. For complaints regarding accommodations, contact City of Bellevue ADA/Title VI Administrator at 425-452-6168 (voice) or email ADATitleVI@bellevuewa.gov. If you are deaf or hard of hearing dial 711. All meetings are wheelchair accessible.