



May-August

NATURAL RESOURCE PROGRAMS

Mercer Slough Environmental Education Center

Lake Hills Greenbelt Ranger Station

Lewis Creek Visitor Center



Bellevue Parks &
Community Services

Natural Resource Division

Table of Contents

Events2

Local Area Hikes.....3

Mercer Slough Programs8

Lewis Creek Programs.....12

Adult Enrichment Series.....14

Visitor Centers15

Visitor Center Locations16



Let us know how we're doing!

Bellevue Parks & Community Services wants to know how we can make our environmental education programs better. We invite you to give us feedback about programs you've attended and suggestions for future programs. You can do this two ways:

1. Ask for an evaluation card at a visitor's center that you can fill out on the spot, OR
2. Simply send us an email at program_feedback@bellevuewa.gov

Any thoughts you have about our programs are welcome, but we're specifically wondering;

- Did the program you attended increase your knowledge of the natural world?
- Did the program you attended increase your respect for natural areas?
- What would the ideal length be for a ranger program?
- Do you prefer programs on animals, plants, ecosystems, natural resources, or something else?
- Do you/your family prefer programs outdoors/in parks or indoors with photos and videos?

Thank you for your help in shaping the future of our educational programs!



Events

NATIONAL MOTH WEEK AT THE BELLEVUE BOTANICAL GARDEN

Saturday, July 23, 8:30-10:30 p.m.

Saturday, July 30, 8:30-10:30 p.m.

All different colors, patterns, shapes, and sizes—this is just some of what we see when peeking into the incredible world of moths! For the first time ever, join us in celebrating this very special week by observing these stunning insects up close. Flutter over to the Bellevue Botanical Garden to learn about the fascinating lives of moths, and see them for yourself as they visit our moth light and sheet setup! This event will take place outdoors, so be sure to dress for the weather.

Ages: 5+. **Cost:** Free! **Registration:** Required.



Local Area Hikes

MERCER SLOUGH RANGER HIKES

Sunday, May 8, 2-3:30 p.m.

Sunday, June 5, 2-3:30 p.m.

Sunday, June 19, 2-3:30 p.m.

Sunday, July 3, 2-3:30 p.m.

Sunday, July 17, 2-3:30 p.m.

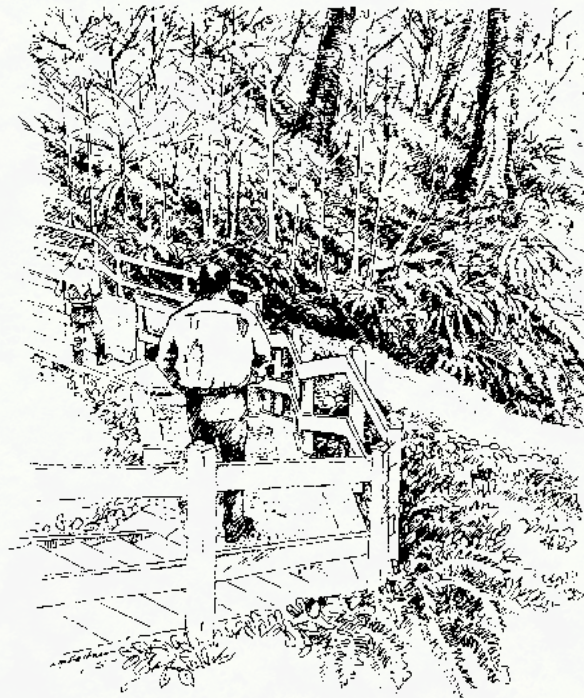
Sunday, August 7, 2-3:30 p.m.

Sunday, August 21, 2-3:30 p.m.

Bring the whole family to join a Ranger on a guided 1.5-mile hike through the Mercer Slough Nature Park. This kid-oriented program aims to educate kids and their parents about the Nature Park while discovering the birds and animals that call the Mercer Slough home. The hour-long nature walk ends at the channel bridge in the middle of the park. From there you can continue on to further explore the rich diversity the park has to offer. **Ages:** All are welcome but best for 5 and up. **Cost:** FREE!

Distance: 1.5 miles.

Meeting Place: Mercer Slough Environmental Education Center,
1625 118 Avenue SE



Online registration required for all participants.

register.bellevuewa.gov

LAKE HILLS GREENBELT RANGER WALKS

Saturday, May 7, 2022, 2-3 p.m.
Saturday, May 14, 2022, 2-3 p.m.
Saturday, May 21, 2022, 2-3 p.m.
Saturday, May 28, 2022, 2-3 p.m.
Saturday, June 4, 2022, 2-3 p.m.
Saturday, June 11, 2022, 2-3 p.m.
Saturday, June 18, 2022, 2-3 p.m.
Saturday, June 25, 2022, 2-3 p.m.
Saturday, July 2, 2022, 2-3 p.m.
Saturday, July 9, 2022, 2-3 p.m.
Saturday, July 16, 2022, 2-3 p.m.
Saturday, July 23, 2022, 2-3 p.m.
Saturday, July 30, 2022, 2-3 p.m.
Saturday, August 13, 2022, 2-3 p.m.
Saturday, August 20, 2022, 2-3 p.m.
Saturday, August 27, 2022, 2-3 p.m.



Interested in a weekend activity that's both fun and educational? Bring the whole family to the Lake Hills Greenbelt Ranger Station for a ranger-led walk! Every Saturday from 2-3 p.m., join us for a mild 1-mile nature hike through the Greenbelt's trails and discover the season's myriad of flora and fauna. Wear your favorite weather-appropriate outdoor clothing and shoes, and

feel free to bring personal wildlife-viewing gear (e.g. binoculars or magnifying glasses) to further enjoy the park. If you're feeling especially energized, continue to the Larsen Lake trail loop and use your newfound knowledge to explore. We'll be heading out rain or shine, so come prepared to learn and have a great time! **Ages:** Best for all ages. **Cost:** FREE! **Registration:** Required.

Distance: 1 mile.

Meeting Place: Lake Hills Greenbelt Ranger Station,
15416 SE 16 Street

RANGER-LED HIKE AT LEWIS CREEK PARK

Saturday, May 7, 10:30-11:30 a.m.

Saturday, June 4, 10:30-11:30 a.m.

Saturday, July 2, 10:30-11:30 a.m.

Saturday, August 6, 10:30-11:30 a.m.

Join a Bellevue Park Ranger to explore the natural and cultural history of Lewis Creek Park. Look for signs of local wildlife and learn what to do when encountering animals in the wild. Please dress for the weather and wear sturdy shoes. **Ages:** All ages. **Cost:** Free!

Distance: 1 mile. Level of Difficulty: Easy
(Approximately 50 ft elevation change).

Meeting Place: Lewis Creek Park Visitor Center,
5808 Lakemont Blvd SE

RANGER-LED HIKE AT LAKEMONT COMMUNITY PARK

Sunday, May 15, 10:30 a.m.-12 p.m.

This lovely trail winds alongside a creek as we ascend and descend throughout the park. Please dress for the weather and wear sturdy shoes. **Ages:** All ages. **Cost:** Free!

Distance: 2 miles. Level of Difficulty: Moderately Difficult
(700 ft total elevation change).

Meeting Place: Lakemont Community Park, 5170 Village Park Dr SE

RANGER-LED HIKE AT COAL CREEK

Saturday, June 12, 10:30 a.m.-12 p.m.

Explore Coal Creek at the Cinder Mine Trailhead to discover Bellevue's largest park and get lost in the wilderness while still in the city! This area is rich in history and wildlife you'll learn about while being guided by a Bellevue Park Ranger. Please dress for the weather and wear sturdy shoes. **Ages:** All ages. **Cost:** Free!

Distance: 2 miles. Level of Difficulty: Moderately Difficult
(240 ft elevation change).

Meeting Place: Meets at Cinder Mine Trailhead,
15400 SE Newcastle Coal Creek Road

RANGER-LED HIKE AT LAKEMONT HIGHLANDS OPEN SPACE

Sunday, July 10, 10 a.m.–12 p.m.

Join a Bellevue Park Ranger at the Lewis Creek Visitor Center to explore the Lakemont Highlands Open Space trail system. Please dress for the weather and wear sturdy shoes. **Ages:** All ages. **Cost:** Free!

Distance: 3 miles. Level of Difficulty: Moderately Difficult (680 ft elevation change).

Meeting Place: Meets at Lewis Creek Park Visitor Center, 5808 Lakemont Blvd SE

RANGER-LED HIKE AT LAKEMONT COMMUNITY PARK

Sunday, August 21, 10:30 a.m.–12 p.m.

This lovely trail winds alongside a creek as we ascend and descend throughout the park. Please dress for the weather and wear sturdy shoes. **Ages:** All ages. **Cost:** Free!

Distance: 2 miles. Level of Difficulty: Moderately Difficult (700 ft total elevation change).

Meeting Place: Meets at Lakemont Community Park, 5170 Village Park Dr SE



Online registration required for all participants.

register.bellevuewa.gov



MERCER SLOUGH

ENVIRONMENTAL EDUCATION CENTER

Mercer Slough Environmental Education Center, 1625 118 Avenue SE

Hours: Daily, 10 a.m.-4 p.m. **Phone:** 425-452-2565

Email: mseec@bellevuewa.gov

Overlooking the 320 acre Mercer Slough Nature Park, the Visitor Center offers remarkable view of the forest canopy and swampy wetlands below. Inside, enjoy an interactive library and interpretive displays for adults and families. Park Rangers provide information and free weekly programs. Pick up trail maps, brochures, and program information today.

We welcome your service animal to our programs. For planning purposes, please include them on your RSVP.



Online registration required for all participants.

register.bellevuewa.gov

Mercer Slough Programs

STORY AND A STROLL

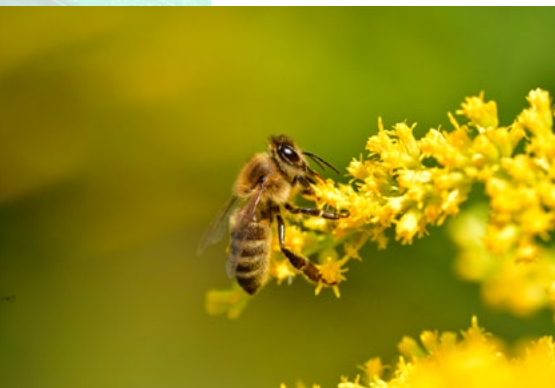
Friday, May 6, 11 a.m-12 p.m.
Friday, May 13, 11 a.m-12 p.m.
Friday, May 27, 11 a.m-12 p.m.
Friday, June 3, 11 a.m-12 p.m.
Friday, June 10, 11 a.m-12 p.m.
Saturday, June 17, 2-3 p.m.
Friday, June 24, 11 a.m-12 p.m.
Friday, July 1, 11 a.m-12 p.m.
Friday, July 8, 11 a.m-12 p.m.
Saturday, July 15, 2-3 p.m.
Friday, July 22, 11 a.m-12 p.m.
Friday, July 29, 11 a.m-12 p.m.
Friday, August 5, 11 a.m-12 p.m.
Friday, August 12, 11 a.m-12 p.m.
Friday, August 19, 11 a.m-12 p.m.
Friday, August 26, 11 a.m-12 p.m.



Join a park Ranger to explore the forested Wetlands of the Mercer Slough Nature Park. Each week as we venture outside, children will be fascinated by all there is to discover and become more comfortable navigating the trail. Children will also enjoy a nature-based story connecting them to the natural world. **Ages:** 3-5. **Cost:** FREE!

RANGER PROGRAM: PERFECT POLLINATORS

Saturday, May 28, 2-3 p.m.



Pollination is not just fascinating; it is an essential ecological function. Over 80% of the world's flowering plants require a pollinator to reproduce. Unfortunately, we are witnessing a significant decline in our natural pollinator populations. Without these pollinators, humans will not survive, and terrestrial ecosystems will continue to deteriorate. Join a Park Ranger to learn more about what we can do to protect our future of food. **Ages:** 5-10. **Cost:** FREE!

Online registration required for all participants.

register.bellevuewa.gov

RANGER PROGRAM: WHO LET THE BUGS OUT

Saturday, June 18, 2-3 p.m.

We can find insects in almost every habitat, yet insects are underappreciated for their role in the food web. Without insects to help break down and dispose of wastes, dead animals and plants would accumulate in our environment. Other animals rely on insects as their primary food source. Without them they would starve. Join a Park Ranger for a nature walk in search of bugs. Enjoy some hands-on activities and crafts as well. **Ages:** 5-10. **Cost:** FREE!

RANGER PROGRAM: WHO'S HUMMING

Saturday, July 16, 2-3 p.m.

Did you know that Hummingbirds flap their wings 80 times per second? This is why you hear that humming sound when they are nearby. These small colorful birds are fascinating to watch as they eagerly drink nectar from flowers or visit backyard feeders. Join a park Ranger to discover more fun facts, enjoy some crafts, and a stroll in nature to listen for some humming...birds. **Ages:** 5-10.

Cost: FREE!

RANGER PROGRAM: HUNTERS OF THE SKY

Saturday, August 20, 2-3 p.m.

Dragonflies are beautiful and intriguing to watch but did you know they are also ferocious predators? They can judge the speed and trajectory of their prey with such precision that they adjust their flight accordingly and ambush unsuspecting insect's mid-air. Join a Park Ranger for a fun filled hour to learn more about these aerial hunters. **Ages:** 5-10. **Cost:** Free!



Mercer Slough Environmental Education Center is a collaboration between the City of Bellevue and the Pacific Science Center. For information on programs provided by Pacific Science Center, please visit pacificsciencecenter.org



Online registration required for all participants.

register.bellevuewa.gov



Lake Hills Greenbelt Ranger Station, 15416 SE 16 Street

Hours: Tuesday-Saturday, 12-4 p.m. **Phone:** 425-452-6993

Email: parkrangerprogram@bellevuewa.gov

Surrounded by community farms, gardens, and beautiful wetlands, you will find interpretive displays, trails, environmental program information, and friendly Park Rangers to answer your questions.

We welcome your service animal to our programs. For planning purposes, please include them on your RSVP.

Lake Hills Greenbelt Programs

NIGHT HIKE WITH A RANGER

Friday, May 27, 2022, 9-10 p.m.

Friday, June 24, 2022, 9:30-10:30 p.m.

Friday, August 26, 2022, 8:30-9:30 p.m.

Most of us have taken walks or hikes during the day, but what about the evening? A whole different world of creatures awakens as the sun goes down in our parks, ready to be discovered! Take a relaxed hike through the Lake Hills Greenbelt with a ranger to look and listen for these mysterious animals. You'll be amazed how different the sights and sounds of the forest are in the evening hours. Bring warm clothing and comfortable shoes, as we'll be doing about a mile of walking in rainy or clear weather! **Ages:** 5+. **Cost:** FREE! **Registration:** Required.



Online registration required for all participants.

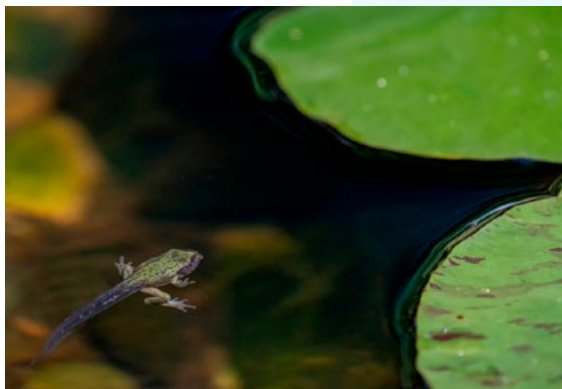
register.bellevuewa.gov

POND PEEK

Saturday, May 7, 2022, 10-11 a.m.

Saturday, May 14, 2022, 10-11 a.m.

Our region is known for its mild, damp conditions, creating the perfect pond habitats for a multitude of creatures, from dragonflies to tadpoles. Join a park ranger for a closer look into the water at the critters that call these ponds home, and learn more about their fascinating (and often strange) lives by seeing them firsthand! We'll be looking at live animals, so get ready to use those observational skills and learn lots! **Ages:** 5-10. **Cost:** FREE! **Registration:** Required.



AMAZING AMPHIBIANS

Saturday, June 4, 2022, 10-11 a.m.

Saturday, June 11, 2022, 10-11 a.m.

Ribbit! Ever wonder more about the incredible chorus of frogs heard on warm evenings, or maybe even the sleek salamanders that find refuge under logs and leaves? Learn all you need to know about the amphibians that inhabit our natural spaces, and head out on a park ranger-led walk for a chance to spy a few! We'll use our newfound knowledge to explore where we might find these amazing animals in the park.

Ages: 5-10. **Cost:** FREE! **Registration:** Required.



BRILLIANT BUGS

Friday, August 12, 2022, 10-11 a.m.

Friday, August 19, 2022, 10-11 a.m.

Lots of bugs call our park home, but how many of them have you actually seen? Join us for a deeper look into where these important critters can be found, from up in the trees to deep in the ground. We'll be looking to see just how many different kinds of bugs we can find, and discussing how they affect the world around them. Come prepared to explore the Lake Hills Greenbelt (with clothing you don't mind getting a little dirty), and discover its many-legged inhabitants—the findings may surprise you! **Ages:** 5-10. **Cost:** Free! **Registration:** Required.



Online registration required for all participants.

register.bellevuewa.gov



LEWIS CREEK

VISITOR CENTER

Lewis Creek Visitor Center, 5808 Lakemont Blvd SE

Hours: Wednesday-Sunday, 10 a.m.-4 p.m **Phone:** 425-452-4195

Email: lcvc@bellevuewa.gov

This beautiful park offers ample opportunity to wander through forests, meadows, and wetlands. Come inside the Visitor Center to pick up trail and park maps for the area, attend a free Natural Resource program, or simply enjoy the relaxing atmosphere.

We welcome your service animal to our programs. For planning purposes, please include them on your RSVP.

Lewis Creek Programs

TODDLER TRAILS

Sunday, May 1, 10-11 a.m.

Friday, May 20, 10-11 a.m.

Saturday, June 11, 10-11 a.m.

Friday, June 24, 10-11 a.m.

Friday, July 8, 10-11 a.m.

Sunday, July 31, 10-11 a.m.

Sunday, August 14, 10-11 a.m.

Friday, August 26, 10-11 a.m.



Meeting Place: Lewis Creek Park Visitor Center,
5808 Lakemont Blvd SE

Explore the trails at Lewis Creek Park with a park ranger and get out some wiggles this summer. We'll take frequent stops while we investigate the different environments of Lewis Creek Park we wander through and learn how we can make hiking fun for everyone. This is an outdoor program, please dress for the weather and wear sturdy shoes. **Ages:** 18 months-3 years with accompanying adult(s).

Cost: Free!

Online registration required for all participants.

register.bellevuewa.gov

WHO'S THAT BIRD?

Sunday, May 8, 2:30-3:30 p.m.

Saturday, May 21, 2:30-3:30 p.m.

Saturday, May 28, 2:30-3:30 p.m.

Fly in this month to learn the who's who and what's what of our local bird species. We'll learn some new feathered friends, explore the dangers of migration, and participants will choose their favorite bird for an art piece to be displayed at the Lewis Creek Visitor Center. **Ages:** 5-10 with accompanying adult(s). **Cost:** Free!



MONSTERS IN THE CREEK

Sunday, June 5, 2:30-3:30 p.m.

Saturday, June 18, 2:30-3:30 p.m.

Saturday, June 25, 2:30-3:30 p.m.

Look closely into a creek. Stay still, and you might just see a giant set of jaws emerge from the deep to snatch dinner as it swims by! Creeks are full of living organisms, and while they might just look like ordinary bugs from afar, we'll get a tadpole's view of all the exoskeletons, pinchers, and external gills creeping along the creek bed this month. **Ages:** 5-10 with accompanying adult(s). **Cost:** Free!



CASCADE CANINES

Saturday, July 9, 2:30-3:30 p.m.

Did you know foxes are the only canids to climb trees or that coyotes tip toe to be extra sneaky? Discover more about Washington's furry canines and practice your howl with a park ranger this month.

Ages: 5-10 with accompanying adult(s).

Cost: Free!



Online registration required for all participants.

register.bellevuewa.gov

FOREST FIRE TAG

Sunday, August 7, 2:30-3:30 p.m.

Saturday, August 13, 2:30-3:30 p.m.

Saturday, August 20, 2:30-3:30 p.m.

Join a park ranger to learn about forest fires this month. We'll play some fun games to explore the science behind wildland fires, learn how trees protect themselves from fire and even how some forests need fire to keep the ecosystem healthy. **Ages:** 5-10 with accompanying adult(s). **Cost:** Free!

BATTY NIGHTS AT LEWIS CREEK PARK

Friday, May 13, 8-9:30 p.m.

Friday, June 3, 8:30-10 p.m.

Friday, July 15, 8:30-10 p.m.

Friday, August 12, 8-9:30 p.m.

Come test out your echolocation with a Park Ranger. We'll learn all about our local bat species while taking a dusk hike to watch for bats as they forage for insects! Bring a flashlight or headlamp, as well as sturdy shoes! **Ages:** 5+ with accompanying adult(s). **Cost:** Free!

Adult Enrichment Series EVENING NATURE WALK

Friday, June 17, 8:30-10 p.m.

Join a Bellevue Park Ranger for a (grown-ups only) hike where we'll explore some of the park's nocturnal species, as well as strategies for seeing these shy animals at night. Please bring a flashlight or headlamp, dress for the weather, and wear sturdy shoes. This hike's difficulty is rated as easy (1 mile with approximately 50 ft elevation change). **Ages:** 18+. **Cost:** Free!



Visitor Centers



Mercer Slough Environmental
Education Center
425-452-2565
1625 118 Avenue SE

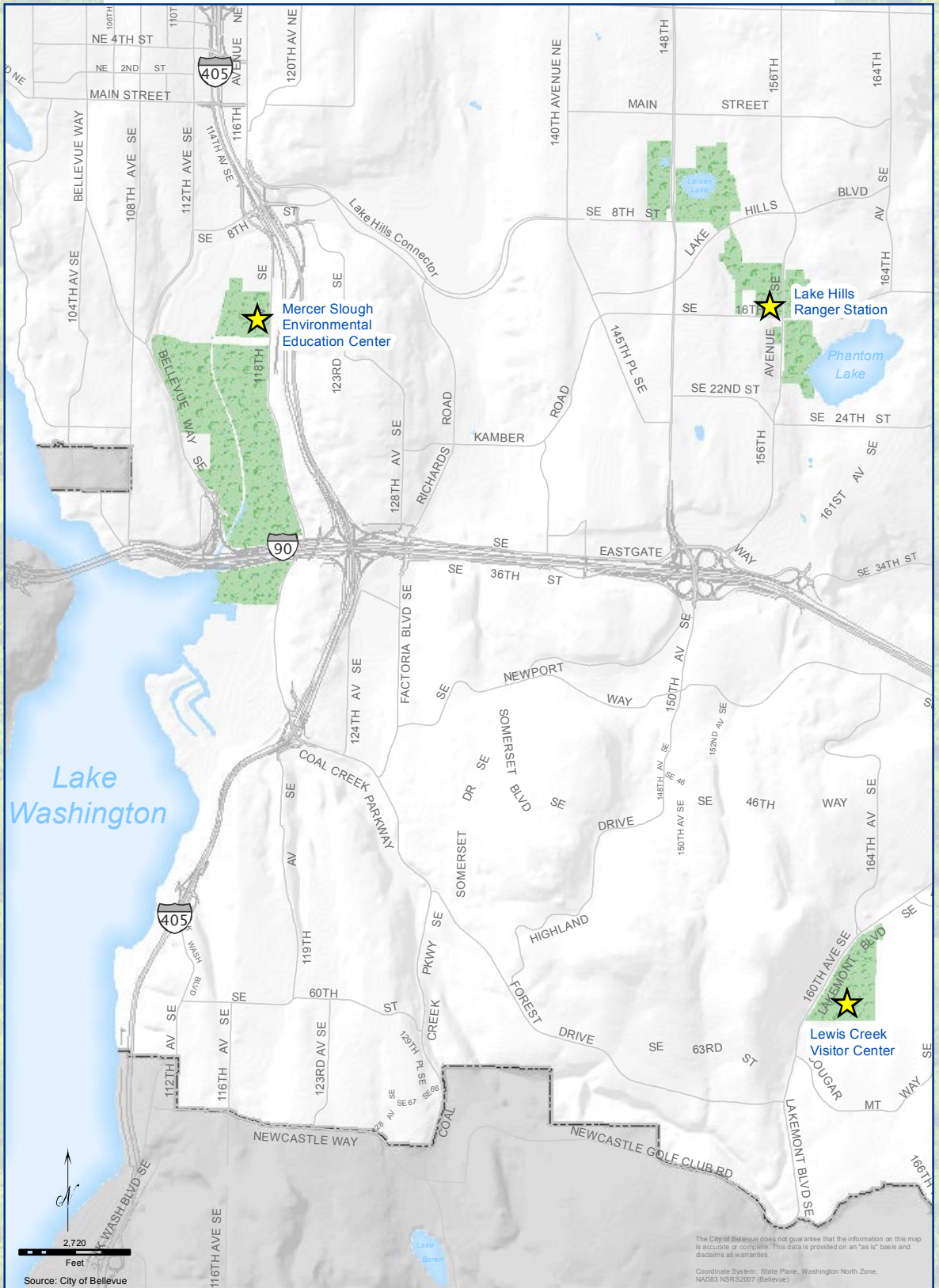


Lake Hills Greenbelt
Ranger Station
425-452-6993
15416 SE 16 Street
(15500 SE 16 Street:
Parking Location)



Lewis Creek Visitor Center
425-452-4195
5808 Lakemont Blvd SE

Visitor Center Locations



NOTES

[illegible]

Mercer Slough Environmental Education Center

425-452-2565

1625 118 Avenue SE

Lake Hills Greenbelt Ranger Station

425-452-6993

15416 SE 16 Street

15500 SE 16 Street: Parking Location

Lewis Creek Visitor Center

425-452-4195

5808 Lakemont Blvd SE



Bellevue Parks & Community Services



For alternate formats, interpreters, or reasonable accommodation requests please phone at least 48 hours in advance 425-452-2565 (voice) or email dvannieula@bellevuewa.gov. For complaints regarding accommodations, contact City of Bellevue ADA/Title VI Administrator at 425-452-6168 (voice) or email ADATitleVI@bellevuewa.gov. If you are deaf or hard of hearing dial 711. All meetings are wheelchair accessible.



PKS-22-6790