



# Neighborhood News

March 2022

## “Unique and United” virtual event to spotlight youth talents

Celebrate the vibrancy and strength of our diverse community with Bellevue Youth Link and the Diversity Advantage Team’s showcase of cultural dances, spoken word and more on Friday, March 4, 6-7:30 p.m.

The event, via Zoom, celebrates Bellevue’s growing diversity. Bellevue Youth Link is a leadership program sponsored by the Parks & Community Service Department and Bellevue Public Schools.

“Bellevue is one of the most diverse cities in the state,” said Parks & Community Services Director Michael Shiosaki. “Nearly 100 languages are spoken by students in the Bellevue School District, and we want to celebrate the vibrancy and strength of our diverse community.”

UNITY THROUGH DIVERSITY  
*Unique & United*



The event is open to the public and preregistration is required. For more information or for accommodations, please contact Patrick Alina, Youth Link coordinator, at [palina@bellevuewa.gov](mailto:palina@bellevuewa.gov) or 425-452-5254.

Subscribe to Neighborhood News electronically:  
[BellevueWA.gov/neighborhood-news](http://BellevueWA.gov/neighborhood-news)



## Brief the Chief!

Police Chief Wendell Shirley wants to hear from you. Do you have questions, concerns or feedback? Do you want to know more about the major projects that the police department is working on, such as body cameras, catalytic converter theft reduction or police use of force reforms?



The first “Brief the Chief” session will be held Tuesday, March 15 at noon via Zoom. Please register at <https://bit.ly/3oW42vw>.

Future Brief the Chief Zoom meetings will vary in time and day to help accommodate as many schedules as possible. Please monitor the city website and the Bellevue police social media channels for announcements. @Bvupd for Twitter and Facebook.



For alternate formats, interpreters, or reasonable accommodation requests please phone at least 48 hours in advance 425-452-2735 (voice) or email [mheilman@bellevuewa.gov](mailto:mheilman@bellevuewa.gov). For complaints regarding accommodations, contact City of Bellevue ADA/Title VI Administrator at 425-452-6168 (voice) or email [ADATitleVI@bellevuewa.gov](mailto:ADATitleVI@bellevuewa.gov). If you are deaf or hard of hearing dial 711. All meetings are wheelchair accessible.



## Newport Neighbors: March 3 is the deadline to send in your NEP project ideas!

Don't miss the opportunity to let the City of Bellevue know what you'd like to see done in your neighborhood.



The project idea submission period is now open for the Newport Neighborhood Enhancement Program, a capital improvements program that provides you and your neighbors with the opportunity to propose and select small-scale physical projects that improve the quality of life and enhance the character in your neighborhood area. The city has a budget of \$282,000 for you and your Newport neighbors to spend on projects.

Submit your ideas in two easy ways:

1. **BY MAIL:** Return the prepaid Project Idea Request Card all Newport residents received in the mail in late January.
2. **ONLINE:** [BellevueWA.gov/nep](http://BellevueWA.gov/nep)

There is no limit on the number of project ideas you can submit, but all ideas must be received at City Hall or submitted online by Thursday, March 3, 2022.

### Somerset NEP Virtual Kickoff Meeting Thursday, Apr 7, 6:30 p.m.

Email [neighborhoodoutreach@bellevuewa.gov](mailto:neighborhoodoutreach@bellevuewa.gov) for Zoom meeting link

A virtual kickoff meeting will be held at 6:30 p.m., Thursday, Apr. 7 to kick off the Neighborhood Enhancement Program process for the Somerset

neighborhood. City staff will provide attendees with a brief overview of the program guidelines and schedule, answer questions, and invite folks to share, discuss and submit project ideas. City project managers will be available in breakout rooms for specific project discussions. Each household in Somerset will receive a postage-paid NEP Project Request Form in the mail in early April. \$217,000 in NEP funding is available to the Somerset neighborhood area.

To find out which NEP Neighborhood Area you call home, when NEP will be in your area and how much funding your area has been allocated, please visit [www.bellevuewa.gov/nep](http://www.bellevuewa.gov/nep).

The program rotates through the city's 14 NEP Neighborhood Areas, serving two areas each year. Since 2015, NEP has rotated through the Eastgate/Factoria, Cougar Mountain/Lakemont, West Lake Sammamish, NE Bellevue, Bridle Trails, NW Bellevue, Downtown/BelRed, Lake Hills, Crossroads, Wilburton, West Bellevue, and Woodridge Neighborhood Areas.

Questions? Please contact Theresa Cuthill at [tcuthill@bellevuewa.gov](mailto:tcuthill@bellevuewa.gov) or 425-462-4186.

---

## Welcome to the Comp Plan Corner!

*Brooke Brod, Community Development Department*

It's no surprise that Bellevue is growing. Recent census data shows that King County is one of the fastest growing places in the country. That growth is expected to continue as our region is projected to add 1.8 million people by 2050, and Bellevue is planning for an additional 35,000 housing units and 70,000 jobs by 2044.

Bellevue's Comprehensive Plan is a tool that helps the city to proactively respond to this growth and change. The plan looks ahead twenty years to anticipate the needs of current and future residents, business owners, workers and visitors to Bellevue. The plan is organized into sections that cover important topics like housing, transportation, neighborhoods, parks and more.

The Comprehensive Plan is updated every eight to ten years and the city is beginning the planning process this month. The entire planning process will take place over two years, and there will be

many opportunities for people to participate and to share their input and ideas.

We're introducing **"Comp Plan Corner"** as a regular feature in Neighborhood News to provide updates on the planning process, let you know about upcoming events and to share opportunities to participate online.

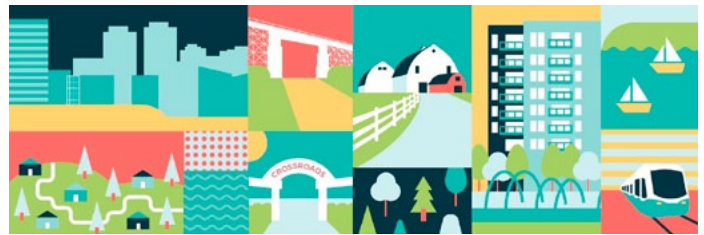
The planning process will begin with an exploration of the city's vision and discussions about the strengths that we want to see continue, and the challenges that we need to address. There are a number of ways for you to be part of the discussion.

- **Register on Engaging Bellevue**  
([engagingbellevue.com/hub-page/bellevue-2044](https://engagingbellevue.com/hub-page/bellevue-2044)). You can learn more about the Comprehensive Plan, ask questions, and share your thoughts at any time.
- **Respond to the Vision Questionnaire**  
Residents should be on the lookout for a mailed questionnaire that will be received by every household in the city. We want to gather your feedback on the future of Bellevue. You can also respond to the questionnaire at [tinyurl.com/bellevue-2044-vision](https://tinyurl.com/bellevue-2044-vision)
- **Attend a Vision Workshop**  
We'll be hosting a community event to talk about the vision for the future on Tuesday, March 22. Register at [bellevue-2044-setting-the-vision.eventbrite.com](https://bellevue-2044-setting-the-vision.eventbrite.com)

Bellevue plans for people, and that means that we need to hear from you! We hope to see you at one of our upcoming events and hear your ideas for the future.

## Save the date for Evening of Cultural Conversations!

Wednesday, April 6



## Save the Date for Neighborhoods Conference

**"Experience Bellevue!"**

Saturday, May 14

[BellevueWA.gov/city-government/departments/community-development/neighborhoods/classes-and-events/bellevue\\_neighborhoods\\_conference](https://BellevueWA.gov/city-government/departments/community-development/neighborhoods/classes-and-events/bellevue_neighborhoods_conference)

Don't miss this opportunity to "Experience Bellevue!" at 24 interactive workshops inside City Hall and outside at sites around Bellevue and its neighborhoods.

Experience Bellevue is for residents, workers and



visitors who want to experience the treasures of a growing and exciting city. Invite a friend, meet new neighbors and explore YOUR city inside and out!

On May 14, 9 a.m.-3 p.m., participants are invited to Experience Bellevue! Choose from guided walking tours, site visits, neighborhood bus tours, park tours and more at multiple locations around the city.

At City Hall, a range of skills workshops will be offered including discussions on race, an active listening class, a workshop on reimagining retail, CPR and emergency preparedness training, and much more. City departments will host multiple demonstrations and community engagement opportunities. Mix and match, inside or outside, all within current Covid-19 public health guidelines.

If you prefer to get outside, choose from guided walking tours of downtown development, the Wilburton district, and Bellevue's newest neighborhood, the Spring District. Parks tours, tree tours and utilities demonstrations will also be offered at on-site locations.

*Continued on next page*



*Continued from previous page*

The full catalog of experiences, along with registration details, will be available at [BellevueWA.gov/neighborhoodsconference](https://BellevueWA.gov/neighborhoodsconference) beginning April 1. Admission for the day is \$10, with fee waivers available.

For more information or to receive an email when registration opens, contact [NeighborhoodsConference@bellevuewa.gov](mailto:NeighborhoodsConference@bellevuewa.gov) or 425-452-6836.



## Safer spring cleaning and responsible reorganizing

*By Erin Hislop, Utilities Conservation and Outreach*

Spring cleaning traditions are approaching! Here are tips to help safely clean and reorganize at home while making the most of the items you no longer want. Remember: **"Every Day is Earth Day!"**

1. **Choose safer cleaners.** Avoid cleaners with the words "poison" or "danger" on the label. If you are getting rid of toxic cleaners, they must go to the Factoria Hazardous Waste Drop Off at the transfer station for proper disposal. Find recipes to make your own safer cleaners at home at [BellevueWA.gov/hazardous-waste](https://BellevueWA.gov/hazardous-waste).
2. **Donate or Repair usable items.** Consider giving usable items to neighbors through apps like "Buy Nothing" or sign up to bring a broken item you want to keep using to a local Repair Fair by visiting [RepairEconomyWA.org](https://RepairEconomyWA.org).
3. **Properly recycle or dispose of items that are not usable.** Looking to recycle unusual items such as propane tanks or mattresses? Bellevue Utilities has compiled a list of locations that take such items at [BellevueWA.gov/recycle-more](https://BellevueWA.gov/recycle-more). Learn which items you can recycle at home at [BellevueWA.gov/recycle-at-home](https://BellevueWA.gov/recycle-at-home).
4. **Take a free Greener Living Class.** Bellevue Utilities is offering a number of free, virtual

classes this spring to provide assistance with cleaning and reorganizing. For a complete class schedule visit [BellevueWA.gov/greener-living-classes](https://BellevueWA.gov/greener-living-classes).

## City exploring changes to the City Noise Code to support small-scale events and community gatherings

Over the past few years, many city planning efforts have received stakeholder input that there is a desire for more gatherings and celebratory activities throughout the city. This includes neighborhood gatherings and celebrations, multifamily resident gatherings, and small events in corporate plazas and other public spaces to highlight our multicultural community and add to the city's vibrancy.

In response to this feedback, city staff completed a process and policy analysis regarding the noise code as it relates to events and neighborhood celebrations under 500 people. This review identified minor changes that will better support smaller events and community celebrations while still limiting negative impacts to neighbors.

The City of Bellevue is exploring amendments to the Bellevue City Code to better support small-scale events and neighborhood gatherings by extending the hours allowable for amplified sound past 5 p.m. and allowing amplified sound on a Sunday or holiday.

Learn more about the proposed changes on the project webpage:

[BellevueWA.gov/noisecontrol-update](https://BellevueWA.gov/noisecontrol-update)

Questions, comments, and feedback can be provided to project manager, Kristina Gallant, senior planner with Development Services at 425-452-6196 or email [kgallant@bellevuewa.gov](mailto:kgallant@bellevuewa.gov).



## Virtual Permit Center connects customers with permit center staff

The city's Development Services Department is offering appointments through a Virtual Permit Center for customers with general questions about permits and the permitting process. The Virtual Permit Center allows customers guaranteed time via video meeting with permit technicians and plan reviewers. Before applying for any permits, customers can ask questions and get real-time answers about the permit process – all from the convenience of their home or office. Learn more about the Virtual Permit Center and book a meeting at [BellevueWA.gov/virtual-permit-center](https://BellevueWA.gov/virtual-permit-center).



Customers who have utilized the Virtual Permit Center appointments since it launched last summer have provided positive feedback on the ease of scheduling and service they have received. Development Services staff have helped customers determine what kind of permit they need and answered questions about city codes. Feedback to staff has included kudos on the setup and service, as well as appreciation for being able to connect directly with knowledgeable staff who can answer questions. Feedback to staff has also been used to improve the service by offering additional appointment times for customers.

Development Services offers one-stop permit shopping for land and building development.

Department staff review plans, inspect projects and investigate code violations. These services ensure that projects are safe and aligned with federal, state and city codes. When customers are ready to apply for building permits, permitting in Bellevue is paperless via [MyBuildingPermit.com](https://MyBuildingPermit.com). More information about permits and the paperless permit process is available at [BellevueWA.gov/development-services](https://BellevueWA.gov/development-services).

## Shingles: Did you know?

Shingles is a viral infection that causes a painful rash typically on one side of the face or body. The duration can be two to four weeks.



It is caused by the varicella-zoster virus – the same virus that causes chickenpox. After you've had chickenpox, the virus lies inactive in nerve tissue near your spinal cord and brain. Years later, the virus may reactivate as shingles.

While shingles isn't a life-threatening condition, it can be very painful. The most common complication is postherpetic neuralgia which causes shingles pain for a long time after your blisters have cleared. A less common complication affects the eye and may result in facial scarring and, in rare instances, vision loss.

The cause of shingles activating is unclear but a contributing factor may be lowered immunity to infections as we grow older. It's more common in older adults and in those with weakened immune systems.

Pain is usually the first symptom of shingles. Other symptoms include burning, numbness or tingling, sensitivity to touch, a red rash that begins a few days after the pain followed by fluid filled blisters that break open, crust over and itch.

Shingles is not contagious and cannot be spread from one person to another. However, it can cause chickenpox in someone who has never had chickenpox or the chickenpox vaccine if they come in contact with a shingles blister. Like chickenpox, once the blisters have developed a crust, they are no longer contagious.

The good news is shingles can be prevented. If you're 50 years of age or older, even if you've had the single dose Zostavax vaccine or have had shingles, you are eligible for the Shingrix vaccine. If you've had shingles, it is possible to contract it again. This vaccine is used as a prevention strategy that is more than 90% effective at preventing shingles and the complications from the disease. It doesn't guarantee that you won't get shingles. But it will likely reduce the course

and severity of the disease and reduce your risk of postherpetic neuralgia.

The Centers for Disease Control (CDC) recommends you get 2 doses of the Shingrix vaccine. The doses are to be given 2-6 months apart. Talk to your doctor or pharmacist about the vaccine and call your health insurance provider ahead of time to see if it's covered.

For additional information about shingles or the Shingrix vaccine, visit these websites, or use your preferred web browser to research shingles:

CDC: [cdc.gov/shingles/index.html](https://cdc.gov/shingles/index.html)

Mayo Clinic: [mayoclinic.org/diseases-conditions/shingles/diagnosis-treatment/drc-20353060](https://mayoclinic.org/diseases-conditions/shingles/diagnosis-treatment/drc-20353060)

---

## City seeks feedback to better manage curb areas

Competition for curbside areas – the space between streets and sidewalks – in downtown



and other dense neighborhoods continues to grow as Bellevue grows. To keep pace, the city has started work on a Curb Management Plan and is seeking input from the public, employers and others about how curb spaces should be used.

Traditional uses of curb areas include on-street parking, travel lanes and bus stops. But newer uses for the same space have placed a strain on this important segment of the city right-of-way. Other pressure comes from:

- Charging stations for electric vehicles
- On-street dining areas
- Rideshare services
- Employer shuttles
- Uses such as delivery services, “micromobility” providers that rent scooters and bicycles, and the desire for more greenery to enhance the urban setting.

Recently, the city council directed the Transportation Commission to work with staff and the community to prepare recommendations

for the Curb Management Plan, and to propose amendments to the city's comprehensive plan in support of the effort.

As part of the outreach, the city is inviting people to respond to a short questionnaire, available at [engagingbellevue.com/curb-management-plan](https://engagingbellevue.com/curb-management-plan); it will be live until April 15 at 5 p.m. People will also have opportunities for input at several Transportation Commission ([BellevueWA.gov/city-government/departments/transportation/planning/transportation-commission](https://BellevueWA.gov/city-government/departments/transportation/planning/transportation-commission)) meetings starting in March.

The new Curb Management Plan will provide a high-level planning framework to help guide how curb areas develop. It will assess existing curb conditions, establish a curb usage prioritization framework, analyze costs and benefits of creating a dedicated curb program and create a “curbside playbook” of options for permits, designs, and uses.

That work is expected to continue throughout 2022. More information is available at [BellevueWA.gov/curb-management-plan](https://BellevueWA.gov/curb-management-plan).



---

## WSDOT reschedules start of Main Street bridge replacement work

### Project will require the closure of Main Street, weekend closure of I-405

The state Department of Transportation has rescheduled the closure of Main Street, between 112th and 116th, in preparation for replacing the Main Street bridge over Interstate 405 with a span that includes a pedestrian and bicycle path.

In the February edition of Neighborhood News, the closure had been listed as beginning as early as March 1; the new timetable calls for the closure to start in late March or April.

In addition to a 150-day closure of Main, WSDOT will close I-405 in both directions through



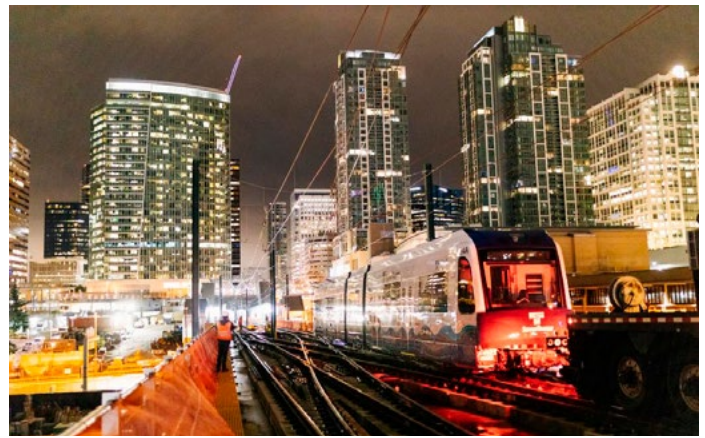
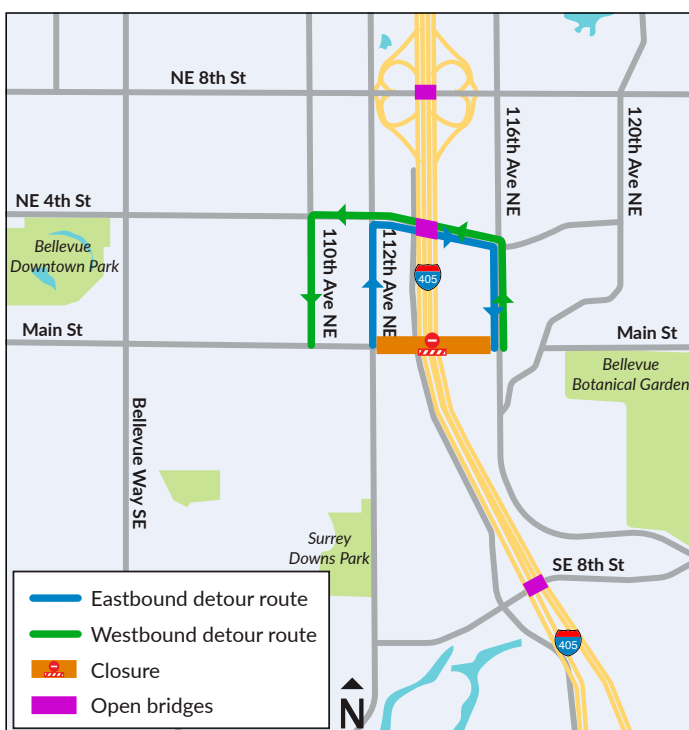
downtown to demolish the bridge. The timing of the highway closure is weather-dependent, but likely would come a few days after Main Street is closed.

City and WSDOT officials know the closure will impact traffic around downtown and encourage travelers to use alternate routes, if possible.

The overpass project is part of WSDOT's I-405 Renton-to-Bellevue Widening and Express Toll Lanes Project. The new bridge will span the new, wider I-405. The project requires that:

- The principal detour for Main Street will be on Northeast Fourth Street. The closure of Main Street will be followed by a 60-day period when one lane in each direction is open.
- The detour route for the I-405 closure will move traffic onto city streets between the highway ramps at Northeast Fourth and Southeast Eighth streets.
- Additional I-405 weekend closures will be scheduled in the coming months to set girders for the new bridge, but those closures will be in one direction only.

More information about the Main Street bridge replacement and all WSDOT closures on I-405 is at [WSDOT.wa.gov/I405Widening](https://www.wsdot.wa.gov/I405Widening). Get the latest information on street closures citywide at [BellevueWA.gov/trafficadvisories](https://BellevueWA.gov/trafficadvisories).



*Nighttime train testing at the Bellevue Downtown Station. Image courtesy of Sound Transit.*

## East Link light rail train testing underway

As construction of East Link light rail heads into substantial completion, Sound Transit has begun testing the light rail system throughout the 14-mile extension.

Light rail vehicle testing involves different scenarios and components. Some of these scenarios can be simulated in sequential order, others cannot. Systems testing takes years to complete, starting at a basic level and becoming more complex over time.

Some of the first work involved manually pulling a train car to confirm it cleared under crossings, turns, etc. Crews have now progressed to testing trains with power. Live wire testing checks the safety and capacity of overhead power lines.

In early spring, testing will occur in the BelRed Overlake and Redmond areas. Over this year, there will be more night trains as the crews continue to test different components, including tracking switches, control lines, signal houses, power systems and other functions.

Current testing is occurring at night; future testing may occur in the daytime. Crews are onboard trains but not passengers. You can view footage from recent testing here: East Link testing continues - YouTube ([youtube.com/watch?v=rpzW1uFHxGQ](https://www.youtube.com/watch?v=rpzW1uFHxGQ)).

With these activities moving toward the opening of the 2 Line in 2023, please remember to pay attention to safety. The trains will be moving fast and can appear quickly. It is important to stay off the tracks at all times and only cross at designated crossings.

## Boards and Commissions Meetings

As of April 2020, no meetings are taking place at City Hall. Stay updated on meetings and cancellations: [BellevueWA.gov](http://BellevueWA.gov)

All meetings are conducted at City Hall unless otherwise noted. Agendas are subject to change. If a holiday occurs on a Monday, please check the updated calendar. Agendas can be downloaded from the city's web pages listed below. Meeting alerts are available through subscribing to the City's Special Meeting Notices page. [BellevueWA.gov/city-government/departments/city-clerks-office/special-meeting-notice](http://BellevueWA.gov/city-government/departments/city-clerks-office/special-meeting-notice)

### Bellevue Diversity Advisory Network

(6 p.m., Bellevue City Hall) Last Tuesday of each month [BellevueWA.gov/city-government/departments/city-managers-office/diversity/bellevue-diversity-advisory-network](http://BellevueWA.gov/city-government/departments/city-managers-office/diversity/bellevue-diversity-advisory-network)

**East Bellevue Community Council** (6:30 p.m., Lake Hills Clubhouse, 15230 Lake Hills Blvd) First Tuesday of each month [BellevueWA.gov/city-government/east-bellevue-community-council](http://BellevueWA.gov/city-government/east-bellevue-community-council)

### Arts Commission

(4:30 p.m., 1E-109) First Tuesday of each month [BellevueWA.gov/city-government/departments/community-development/arts-and-culture/arts-commission](http://BellevueWA.gov/city-government/departments/community-development/arts-and-culture/arts-commission)

### Environmental Services Commission

(6:30 p.m., 1E-113) First Thursday of each month [BellevueWA.gov/city-government/departments/utilities/conservation-and-the-environment/environmental-services-commission](http://BellevueWA.gov/city-government/departments/utilities/conservation-and-the-environment/environmental-services-commission)

**Planning Commission** (6:30 p.m., 1E-113) Second and fourth Wednesday of each month [BellevueWA.gov/city-government/departments/community-development/planning-commission](http://BellevueWA.gov/city-government/departments/community-development/planning-commission)

### Transportation Commission

(6:30 p.m., 1E-113) Second Thursday of each month with fourth Thursday as needed. [BellevueWA.gov/planning/transportation-commission](http://BellevueWA.gov/planning/transportation-commission)

## City Council [Bellevue.Legistar.com/Calendar.aspx](http://Bellevue.Legistar.com/Calendar.aspx)

Day	Scheduled Meeting(s)	Location	Public Comment Opportunity
First four Mondays of each Month, except August and December	6 p.m. Regular Meeting	Virtual Bellevue TV channel 21 and BTV YouTube channel <a href="http://youtube.com/user/BellevueWashington">youtube.com/user/BellevueWashington</a>	Emails to Council are accepted at <a href="mailto:council@bellevuewa.gov">council@bellevuewa.gov</a> at any time. Further opportunities for public comment are published on each Council agenda and can be found at <a href="http://bellevue.legistar.com/Calendar.aspx">bellevue.legistar.com/Calendar.aspx</a>
August – first Monday only			
December – first and second Mondays only			

### Human Services Commission

(6 p.m., 1E-113) First and third Tuesday of each month [BellevueWA.gov/city-government/departments/city-clerks-office/boards-and-commissions/human-services-commission](http://BellevueWA.gov/city-government/departments/city-clerks-office/boards-and-commissions/human-services-commission)

### LEOFF 1 Disability Board

(6 p.m., Room 1E-118) First Tuesday of each month [BellevueWA.gov/city-government/departments/human-resources/retirees-former-employees/leoff-1-disability-board](http://BellevueWA.gov/city-government/departments/human-resources/retirees-former-employees/leoff-1-disability-board)

### Library Board

(5p.m., Lake Hills, Bellevue or Newport Way Library) Third Tuesday of each month [BellevueWA.gov/city-government/departments/city-clerks-office/boards-and-commissions/library-board](http://BellevueWA.gov/city-government/departments/city-clerks-office/boards-and-commissions/library-board)

### Parks & Community Services Board

(6 p.m., 1E-113) Second Tuesday of each month [BellevueWA.gov/city-government/departments/city-clerks-office/boards-and-commissions/parks-and-community-services-board](http://BellevueWA.gov/city-government/departments/city-clerks-office/boards-and-commissions/parks-and-community-services-board)

### The Bellevue Network on Aging (BNOA)

8:30 a.m., North Bellevue Community Center 4063 148th Ave NE, Bellevue) First Thursday of each month [BellevueWA.gov/bnoa](http://BellevueWA.gov/bnoa)

### Special Events Committee

(8:30 a.m., 1E-112) Second Thursday of each month [BellevueWA.gov/city-government/departments/city-clerks-office/boards-and-commissions/special-events-committee](http://BellevueWA.gov/city-government/departments/city-clerks-office/boards-and-commissions/special-events-committee)

### Youth Link Board

(6 p.m., 1E-120) Second Wednesday of each month [BellevueWA.gov/city-government/departments/city-clerks-office/boards-and-commissions/youth-link-board](http://BellevueWA.gov/city-government/departments/city-clerks-office/boards-and-commissions/youth-link-board)

Bellevue's Neighborhood Services Division offers a variety of programs and partnerships for neighborhood leaders and active residents. To learn more about citizen involvement opportunities and programs to enhance neighborhoods, please visit our website at: [BellevueWA.gov/city-government/departments/community-development/neighborhoods](http://BellevueWA.gov/city-government/departments/community-development/neighborhoods) or call 425-452-6836 or email: [neighborhoodoutreach@bellevuewa.gov](mailto:neighborhoodoutreach@bellevuewa.gov).

To subscribe to this newsletter, visit: [BellevueWA.gov/neighborhood-news](http://BellevueWA.gov/neighborhood-news)