

KELSEY CREEK FARM

PROMOTING LEARNING OPPORTUNITIES
IN A FARM ENVIRONMENT



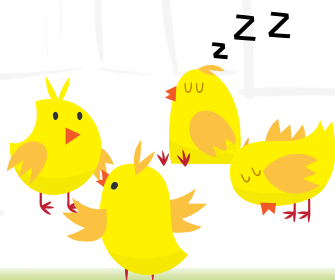
JAN-MAY 2022



Kelsey Creek Farm provides the community an opportunity to cross the threshold of urban living into an agricultural experience, while maintaining the historic integrity of the farm, through interpretive displays and education. Our programs foster creativity and active play. The Farm's two historical barns sit prominently on the crest of a hill. There is no entrance fee; however, we welcome and appreciate your donations.

When visiting any of Bellevue's parks, all dogs and other pets must be kept on a leash. Out of consideration for our farm animals' health and wellbeing, please observe all posted signs prohibiting pets from the barnyard.

**FARM ANIMALS IN THE PASTURES
DAILY FROM 9 a.m.-3 p.m.
365 DAYS A YEAR**



Child and Family Activities

Little Farmers

Join us for hands-on fun in the barnyard with your 2-3-year-old. Classes will feature various farm animals, barn chores, feeding, petting, and taking a pony ride – all the fun is right here! Children team up with a parent/adult to actively participate in this class. Come dressed to play outside and get dirty! Siblings under two are welcome in front or back packs. Adult/ child teams only. A team is one child and one adult.

Ages: 2-3

Hours/Dates: 10-11:30 a.m.

3 Classes: Fees: \$75 (R) \$90 (N)

[Jan.11-25 \(Tuesday\)](#)

[Jan. 12-26 \(Wednesday\)](#)

[Jan. 13-27 \(Thursday\)](#)

[Feb. 1-15 \(Tuesday\)](#)

[Feb. 2-16 \(Wednesday\)](#)

[Feb. 3-17 \(Thursday\)](#)

4 Classes: Fees: \$97 (R) \$116 (N)

[March 1-22 \(Tuesday\)](#)

[March 2-23 \(Wednesday\)](#)

[March 3-24 \(Thursday\)](#)

[March 29-April 19 \(Tuesday\)](#)

[March 30-April 20 \(Wednesday\)](#)

[March 31-April 21 \(Thursday\)](#)

[May 3-24 \(Tuesday\)](#)

[May 4-24 \(Wednesday\)](#)

[May 5-24 \(Thursday\)](#)



Farm Explorers

Join us for a farm adventure featuring animal care, barn chores, a pony ride, and baking yummy snacks. This drop-off program is designed for the independent 4-6-year-old. Curriculum is integrated with seasonal themes, arts and crafts, stories and animal interaction. This class includes a pony ride. Children must be potty trained.

Ages: 4-6

Hours/Dates: 10 a.m.-12:30 p.m.

2 Classes: Fees: \$57 (R) \$68 (N)

Jan. 10-24 (Monday) No class Jan 17

3 Classes: Fees: \$85 (R) \$102 (N)

Jan. 31-Feb. 14 (Monday)

4 Classes: Fees: \$110 (R) \$132 (N)

Feb. 28-March 21 (Monday)

March 28-April 18 (Monday)

May 2-23 (Monday)

Private Trail Rides

Your child will get to ride one of our adorable ponies on a private ride through the trails at Kelsey Creek Farm! Your child will learn the basics of horseback riding and experience the farm in a whole new way! Parents/guardians may choose to walk along, but no strollers allowed.

Ages: 2-5

Fees: \$20 (R) \$24 (N)

Hours/Dates:

Ages: 2-3 1:30-1:45 p.m. or 1:45-2 p.m.

Ages: 4-5 2:30-2:45 p.m. or 2:45-3 p.m.

May 10 (Tuesday)	<u>1:30-1:45</u>	<u>1:45-2</u>	<u>2:30-2:45</u>	<u>2:45-3</u>
May 12 (Thursday)	<u>1:30-1:45</u>	<u>1:45-2</u>	<u>2:30-2:45</u>	<u>2:45-3</u>
May 17 (Tuesday)	<u>1:30-1:45</u>	<u>1:45-2</u>	<u>2:30-2:45</u>	<u>2:45-3</u>
May 19 (Thursday)	<u>1:30-1:45</u>	<u>1:45-2</u>	<u>2:30-2:45</u>	<u>2:45-3</u>
May 24 (Tuesday)	<u>1:30-1:45</u>	<u>1:45-2</u>	<u>2:30-2:45</u>	<u>2:45-3</u>
May 26 (Thursday)	<u>1:30-1:45</u>	<u>1:45-2</u>	<u>2:30-2:45</u>	<u>2:45-3</u>
May 31 (Tuesday)	<u>1:30-1:45</u>	<u>1:45-2</u>	<u>2:30-2:45</u>	<u>2:45-3</u>

Farm Animal Pen Pals

Are you curious about what Kelsey Creek Farm's animals are up to? Sign up for this program to receive a letter from one of our adorable farm animals! When you sign up, your animal will send you a letter and a photograph of him/herself. If you send a letter in reply to your farm animal, you will receive a customized letter in return. For each purchase, you will receive a picture of your animal, a self-addressed envelope, and up to two letters.

Animal choices: [Rascal the Pony](#), [Harriet the Bunny](#), [Jackson the Cat](#), [Eleanor the Duck](#)

Age recommendation: 4-10

Fees: \$6 (R) \$8 (N)

Weekend Workshops

Veggies for Valentine's

Do you love farm animals? So do we! We'll celebrate Valentine's Day by making veggie treats for the farm animals and popcorn treats for the kids! Your child will meet our animals, make a Valentine card for an animal, and receive one in return! If you do not want your child to eat popcorn, please bring your own snack. Adult/child teams only. A team is one child and one adult.

Ages: 4-8

Fees: \$25 (R) \$30 (N)

Hours/Dates: 1-2 p.m

[Feb. 13 \(Sunday\)](#)

St. Patrick's Celebration

Celebrate St. Patrick's Day at the farm with the animals! We'll dress up a pony in green decorations, go on a treasure hunt to look for leprechaun gold, and do a craft. Adult/child teams only. A team is one child and one adult.

Ages: 4-8

Fees: \$25 (R) \$30 (N)

Hours/Dates: 1-2 p.m

[March 6 \(Sunday\)](#)



Adventures in Pioneer Farming

Enjoy a spring afternoon immersed in farm life. Spend time with our animals and learn about pioneer farming in our historic log cabin that was built in 1888. Activities will include learning how to grind wheat into flour, feeding lunch to the farm animals, and working with real wool from our sheep. Children will have fun experiencing what life was like a hundred years ago. Adult/ child teams only. A team is one child and one adult.

Ages: 4-8

Fees: \$25 (R) \$30 (N)

Hours/Dates: 1-2 p.m

[March 20 \(Sunday\)](#)

Bellevue's Hidden Pioneer History

Before Bellevue grew into the city that we know, it was a rural community homesteaded by pioneers who built log cabins, raised animals, and kept gardens. Join us for this class to learn what life was like in Bellevue before electricity, cars, and communications revolutionized daily life. You and your child will get to grind wheat into flour, bake pioneer hardtack to feed to the pig, and get an in-depth tour of our log cabin that was built in 1888. Adult/child teams only. A team is one child and one adult.

Ages: 9-12

Fees: \$30 (R) / \$36 (N)

Hours/Dates: 1-2:30 p.m.

[March 27 \(Sunday\)](#)

Spring Egg-stravaganza

Celebrate spring at this egg-themed workshop. We'll collect eggs from our chicken coops and compare the eggs that chickens and ducks lay. We'll pet a bunny, read a story, and go on an egg hunt! Adult/child teams only. A team is one child and one adult.

Ages: 4-8

Fees: \$25 (R) \$30 (N)

Hours/Dates: 1-2 p.m

[April 10 \(Sunday\)](#)



Busy Beavers

Beavers are busy in the creeks at Kelsey Creek Farm and you can come learn about them! Your child will help us build an outdoor beaver pond diorama to learn all about these aquatic engineers. Then we'll visit the beaver's wetlands and look for signs of beaver activity. Your child will receive their own nature notebook to record their findings. Adult/child teams only. A team is one child and one adult.

Ages: 4-8

Fees: \$25 (R) \$30 (N)

Hours/Dates: 1-2 p.m

[April 24 \(Sunday\)](#)

Introduction to Sheep and Fiber Arts

In this hands-on class, you and your child will get to meet our sheep, go on a sheep walk, and learn about crafting with wool. Working with wool from our sheep, you'll card wool, spin wool into yarn, and learn about felting. You will take home a simple bracelet that you'll spin with wool from our sheep. Adult/child teams only. A team is one child and one adult.

Ages: 9-12

Fees: \$30 (R) \$36 (N)

Hours/Dates: 10-11:30 a.m.

[April 24 \(Sunday\)](#)

Mother's Day on the Farm

Join us with your child for a fun Mother's Day activity at Kelsey Creek Farm. You and your child will get to feed treats to our farm animals and take the goats on a walk. Then your child will help us prepare a fun Mother's Day surprise! Adult/child teams only. A team is one child and one adult.

Ages: 4-8

Fees: \$25 (R) \$30 (N)

Hours/Dates: 1-2 p.m

[May 8 \(Sunday\)](#)



Hop Into Spring

Bunnies love spring because the carrots are growing everywhere! You and your child will get to meet our adorable bunnies, do a bunny-themed craft, and find out what's growing in the garden. Adult/child teams only. A team is one child and one adult.

Ages: 4-8

Fees: \$25 (R) \$30 (N)

Hours/Dates: 1-2 p.m

May 15 (Sunday)

Around the World on a Farm

The plants and animals at Kelsey Creek Farm were domesticated all around the world. In this class, you'll visit our garden and pet our farm animals on a tour designed to teach about the domestication of farm animals and the places around the world where they came from. You'll see wheat and corn growing, learn about which animals were domesticated in Asia, the Middle East, and Africa, and see one of the few species domesticated on North America. Adult/child teams only. A team is one child and one adult.

Ages: 9-12

Fees: \$30 (R) \$36 (N)

Hours/Dates: 1-2:30pm

May 22 (Sunday)



Tractor Tales

Bring your tractor-loving child to this fun tractor experience! Your child will get to ride toy tractors, sit in the seat of our real tractor for a photo, and watch the real tractor in action. We will do a tractor-themed craft and learn all about what tractors do on farms. Adult/child teams only. A team is one child and one adult.

Ages: 4-6

Fees: \$25 (R) \$30 (N)

Hours/Dates: 1-2 p.m

[May 29 \(Sunday\)](#)

Mid-Winter Break Camps

Cartooniversity Camp

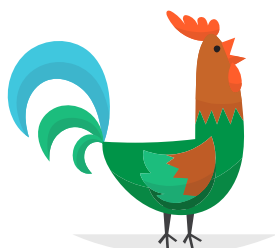
Join professional cartoonist Jeff Johnson for a unique opportunity for kids of all skill levels to explore the art of cartooning in an encouraging, positive classroom environment at Kelsey Creek Farm. Surrounded by historic dairy barns and the farm animals that call Kelsey Creek Farm, "home," students will have plenty of inspiration to create their own cartoons. A series of fun, challenging projects showcase multiple areas of study including faces, bodies, character development, layout, perspective, lettering and much more. Emphasis is on developing each student's own style. All materials provided. Come join the fun at Kelsey Creek Farm!

Ages: 9-14

Fees: \$320 (R) \$384 (N)

Hours/Dates: 10 a.m.-3 p.m.

[Feb. 22-25 \(Tuesday-Friday\)](#)



Mid-Winter Break Mini Camp

Spend your mid-winter break exploring Kelsey Creek Farm, meeting farm animals, playing active games, creating crafts, and making new friends. Experienced staff will provide a safe and supportive environment in a small group setting.

Ages: 4-6

Fees: \$150 (R) \$180 (N)

Hours/Dates: 9 a.m.-1 p.m.

[Feb. 22-25 \(Tuesday-Friday\)](#)

Spring Break Programs

Spring Break Mini Camp

Children will be actively engaged with the joys of farm life. Learn about our animal friends, work in the barn with rakes and pails and mix up treats for the animals. We'll create art, bake snacks, and play games too.

Ages: 4-6

Fees: \$180 (R) \$216 (N)

Hours/Dates: 9 a.m.-1 p.m.

[April 11-15 \(Monday-Friday\)](#)

Farmer for a Day

Bring your child to Kelsey Creek Farm for a fun day meeting our animals, doing crafts, and exploring the farm. Your child will take our goats on a walk, do a painting with a chicken, and learn all about how farms work.

Ages: 9-11

Fees: \$40 (R) / \$48 (NR)

Hours/Dates: 10 a.m.-2 p.m.

[April 11 \(Monday\)](#)



Pioneer for a Day

Explore what life in Bellevue was like before electricity, cars, and cell phones. Your child will spend the day in our historic log cabin built in 1888. We'll learn how to plow a wheat field, grind wheat into flour, and make pioneer hardtack to feed to our pig! Your child will learn how to work with real wool from our sheep and will create a wool craft to take home.

Ages: 9-11

Fees: \$40 (R) \$48 (N)

Hours/Dates: 10 a.m.-2 p.m.

[April 12 \(Tuesday\)](#)



Naturalist for a Day

In this class, your child will explore the wetlands and forests of Kelsey Creek Farm. We'll learn about the wild plants and animals that live here, we'll look for signs of beavers, and we'll learn how to identify Bellevue's common native trees. Your child will create their own nature journal to take home.

Ages: 9-11

Fees: \$40 (R) \$48 (N)

Hours/Dates: 10 a.m.-2 p.m.

[April 13 \(Wednesday\)](#)



Teen Programs

After School Teen Program

Assist Kelsey Creek Farm staff with farm chores and learn responsible animal care while earning service hours for school. Participants will be working outside exposed to animals, hay, vegetation, and dust. Participants must be capable of understanding and following directions. Volunteers need to be able to attend the first two weeks of the program.

Ages: 12-18

Fees: \$15 (R) \$18 (N)

Hours/Dates: 1:30-4:30 p.m.

[Jan. 5-26 \(Wednesday\)](#)

[Feb. 2-23 \(Wednesday\)](#)

[March 2-23 \(Wednesday\)](#)

[March 30-April 20 \(Wednesday\)](#)

[May 4-25 \(Wednesday\)](#)

Saturday Morning Teen Program

Assist Kelsey Creek Farm staff with farm chores and learn responsible animal care while earning service hours for school. Participants will be working outside exposed to animals, hay, vegetation, and dust. Participants must be capable of understanding and following directions. Volunteers need to be able to attend the first two weeks of the program.

Ages: 15-18

Fees: \$15 (R) \$18 (N)

Hours/Dates: 8:30 a.m.-noon

[Feb. 5-26 \(Saturday\)](#)

[March 5-26 \(Saturday\)](#)

[April 2-23 \(Saturday\)](#)

[May 7-28 \(Saturday\)](#)



Adult Programs

Stitch Circle

Bring your current fiber project to Kelsey Creek Farm and work on it while meeting fellow crafters. This is an opportunity to gather, chat, and work on projects while meeting new people, not a formal class. Bring your own materials. Pre-registration suggested to reserve a seat, space is limited due to Covid restrictions. Questions? Email Stacy at sstenslie@bellevuewa.gov.

Ages: 18+

Fees: free

Hours/Dates: 10:30 a.m.-noon

[Jan. 14 \(Friday\)](#)

[Feb. 11 \(Friday\)](#)

[March 11 \(Friday\)](#)

[April 8 \(Friday\)](#)

[May 13 \(Friday\)](#)

Tour of Bellevue's Pioneer and Agricultural History

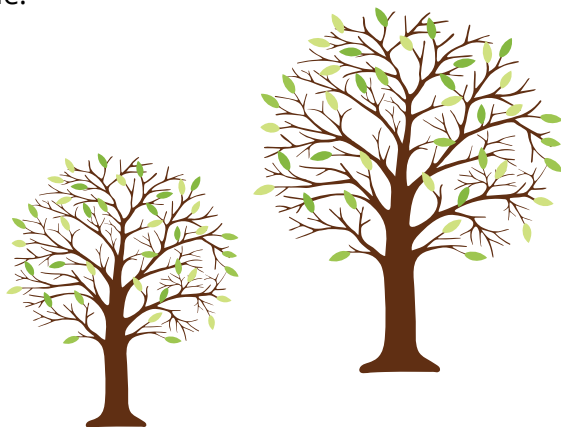
The stories at Kelsey Creek Farm provide a window into the wider history of Bellevue and the Eastside. In this tour, we'll visit the log cabin, which was built in 1888, and see authentic artifacts owned by the pioneers who built it. We'll tour the interiors of the barns, built in the 1930s and 1940s, to learn about dairy farming in the early twentieth century. Through historic photos, artifacts, and stories, we'll connect the history of Kelsey Creek Farm to the settlement and development of early Bellevue.

Ages: 16+

Fees: free

Hours/Dates: 1-2 p.m.

[May 14 \(Saturday\)](#)



Special Events

Sheep Shearing

Watch the sheep being shorn of their winter coats. Enjoy wool spinning demonstrations, children's crafts, tractor-pulled wagon rides, pony rides, food, animal viewing areas, and more. Free shuttle service available at Wilburton Park & Ride and Bannerwood Sports Park. Please note: no pets allowed on shuttle bus or in the barnyard areas. No entrance fees. Costs vary for food & activities. All ages. No registration needed.

Ages: All ages welcome

Fees: Entrance is free, some activities have nominal fees

Hours/Dates: 11 a.m.-4 p.m.

[April 30 \(Saturday\)](#)





FARM HISTORY

The farm's history began in 1921, when the Duey Family rented 190 acres and began delivering cream and butter stamped with the name Twin Valley Dairy. In August of 1933 the original barn burned. Mr. Duey, a skilled carpenter, along with some hired hands rebuilt the barn in two weeks. Today, this barn is the smaller of the two barns and is called the Animal Barn. Mr. Duey also built the Red Barn, originally used as a milk house.

The second dairy barn was built in 1943-44 by Mr. Michaels, the new owner, (this is the north barn now known as the Education Barn) and the dairy herd was increased in size. After the end of WWII, he sold the farmstead to Ray and Nettie Fisher. The Fishers phased out the dairy operation and began raising Hereford beef cattle. They built the current farm house in 1954 and moved to live on the property.

In 1968 neighbors to the farm began a movement to petition the Bellevue City Council to purchase the property and secure it as a public park. The neighbors' petition succeeded and the City negotiated with the Fisher family to purchase the 80 acres, including the farm house, barns and out buildings. The Fishers sold their farm property to the City at a price much reduced from what they knew that they could get from developers. They did so because they believed in preserving the beauty and legacy of the agricultural buildings and the land.

In 1972 the oldest barn was modified to house an assortment of farm animals for public viewing. The other, larger barn, commonly referred to as the Education Barn, was remodeled inside and used to accommodate a variety of community programs, including children's day camps, art classes, and farm-themed classes, to name just a few.

REGISTER ONLINE!

register.bellevuewa.gov

Scholarships available for
many programs.



For alternate formats, interpreters, or reasonable accommodation requests please phone at least 48 hours in advance 425-452-4253 (voice) or email asolomonson@bellevuewa.gov. For complaints regarding accommodations, contact City of Bellevue ADA/Title VI Administrator at 425-452-6168 (voice) or email ADATitleVI@bellevuewa.gov. If you are deaf or hard of hearing dial 711. All meetings are wheelchair accessible.



Kelsey Creek Farm | 410 130th Pl SE | Bellevue, WA 98005
425-452-7688 | KelseyCreekFarm@bellevuewa.gov