



## Utility Box Wraps Program

---

# *Coloring Pages*

**Produced by the Arts & Culture Program in partnership with artists Marsha Rollinger, Carmel Mercado, and Rohini Mathur.**

## Natural and man-made, past, present and future ...

These two utility box wrap pattern sets designed by Marsha Rollinger focus on the urban and natural aspects of Bellevue, while recognizing the City's farming past and technological present and future.

The designs feature repeating patterns that contain various shapes and elements specifically relating to Bellevue attractions, locations, architecture, and history.



You can find Rollinger's wrapped utility boxes at NE Spring Boulevard and 123rd Avenue NE, and NE Spring Boulevard and 124th Avenue NE in the BelRed Arts District.



## Urban Tech

This design has an urban “tech” feel, relating to the established and growing technology sector in Bellevue and is created using shapes inspired by well-known Bellevue Locations and architecture.

Tying to the tech feel, some of the shapes-such as the Bellevue Square windows and the Kelsey Creek Farm barn window-resemble pixels within the design.

The companion pattern features the computer chip inspired icon from the main pattern, which has elements similar to the Bellevue Downtown Park waterfall shape.



Kelsey Creek Farm barn  
roof shape and window



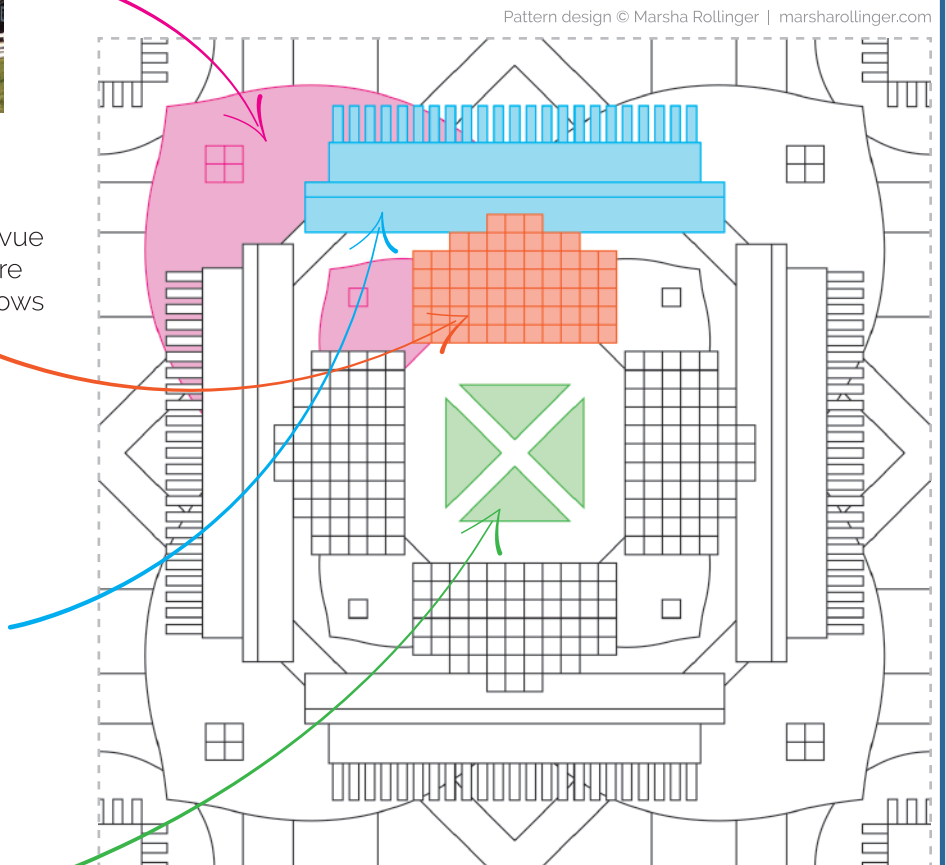
Bellevue  
Square  
windows



Bellevue Downtown Park waterfall

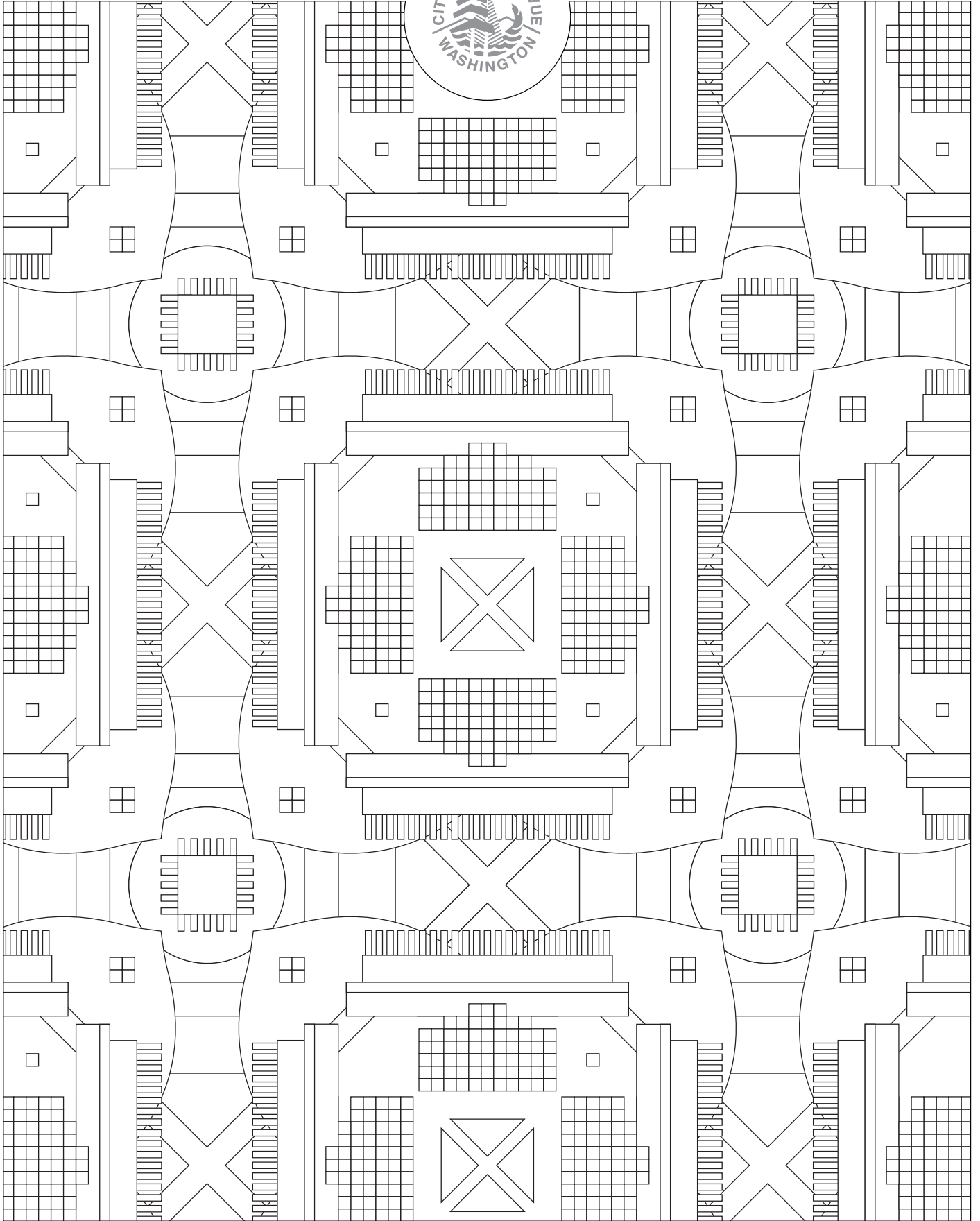


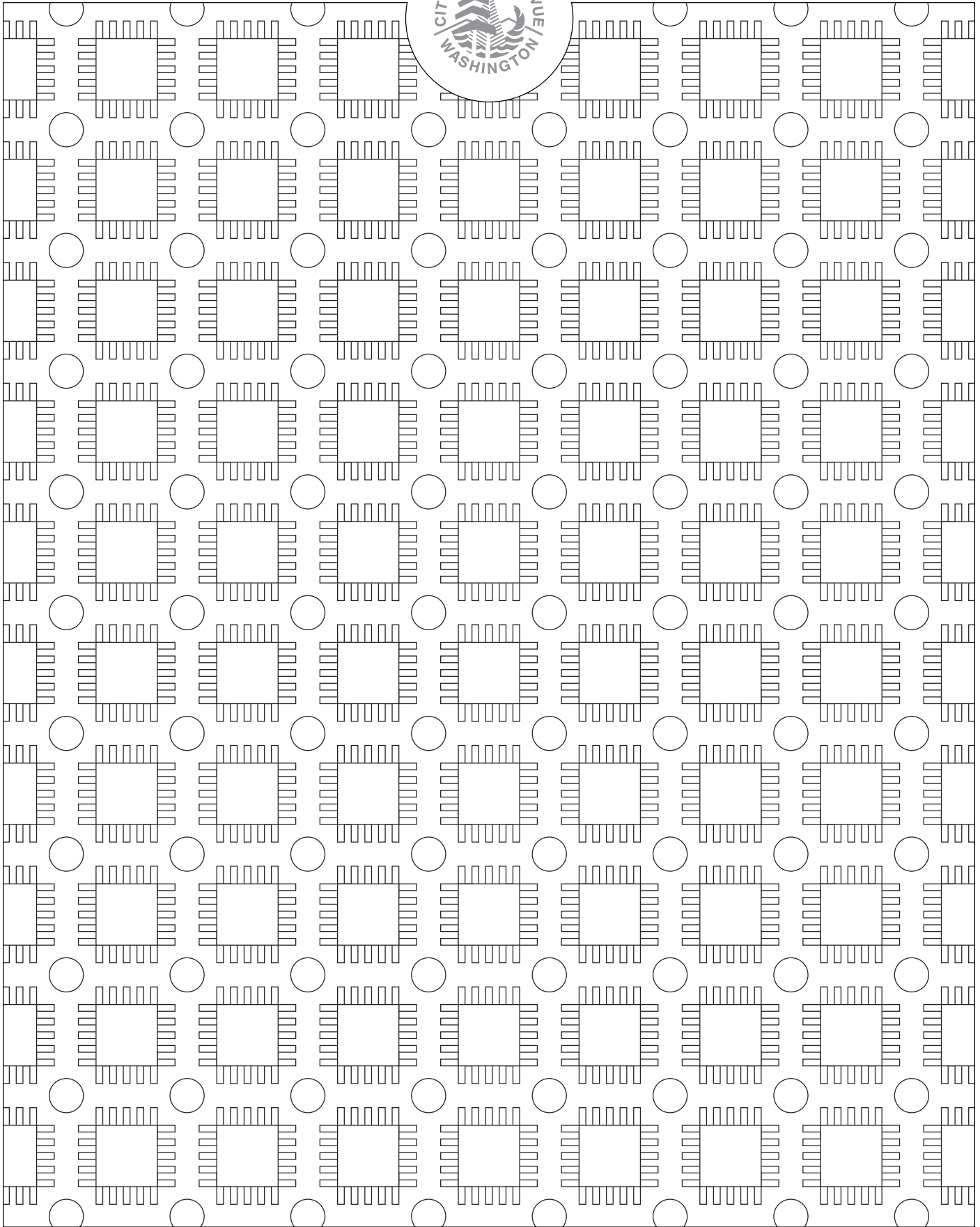
Mercer Slough bridge



Pattern design © Marsha Rollinger | marsharollinger.com

**FULL REPEAT TILE OF MAIN PATTERN WITH  
COLORS HIGHLIGHTING INSPIRED SHAPES**







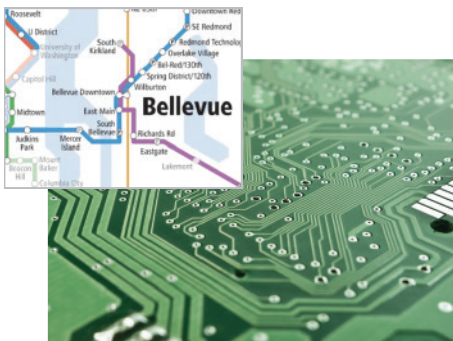
## Past Present

This design has a more “organic” feel that pays homage to Bellevue’s natural spaces and farming history while still incorporating tech elements in the layout.

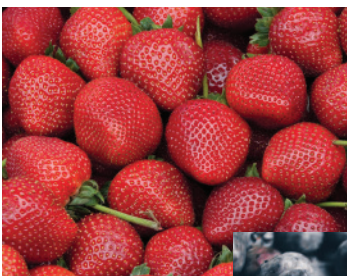
There are flowers, leaves, and water ripples incorporated into the designs that represent the parks, green spaces, and waterways within Bellevue.



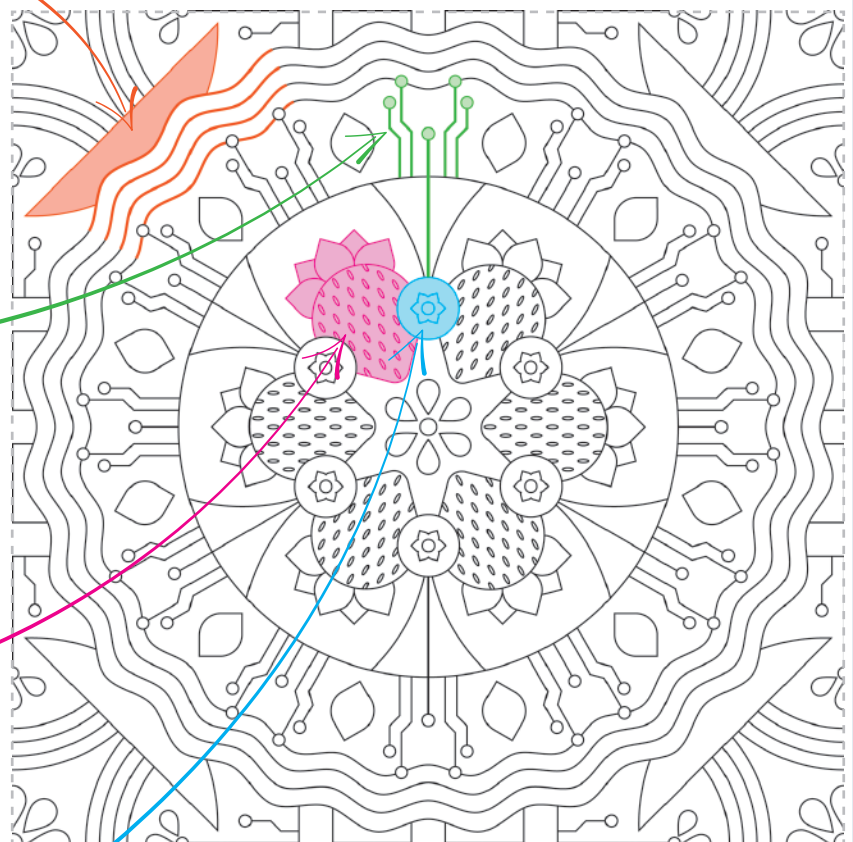
Boating on the Mercer Slough and other waterways in Bellevue



Nodes on the light rail map and traces and vias on a circuit board

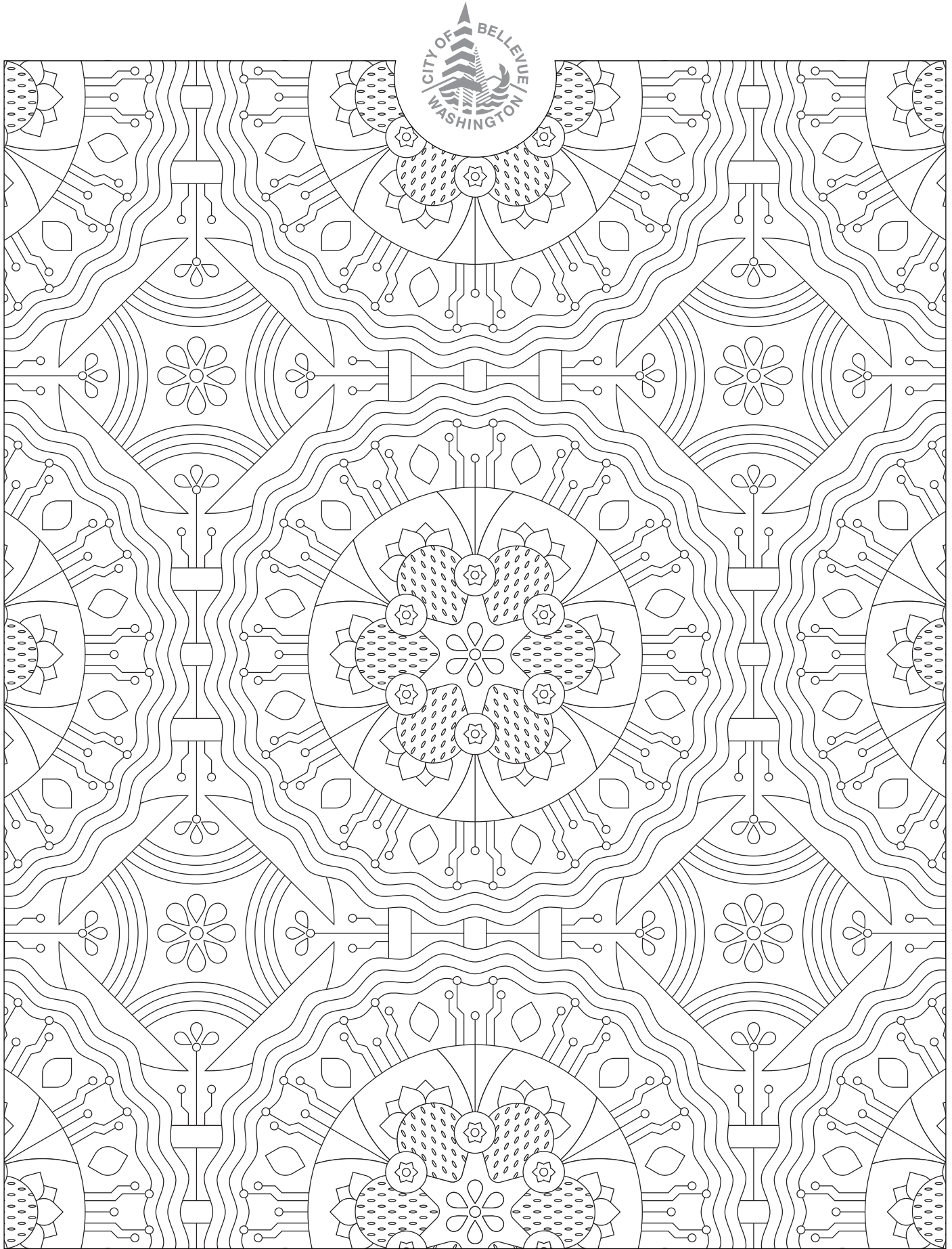


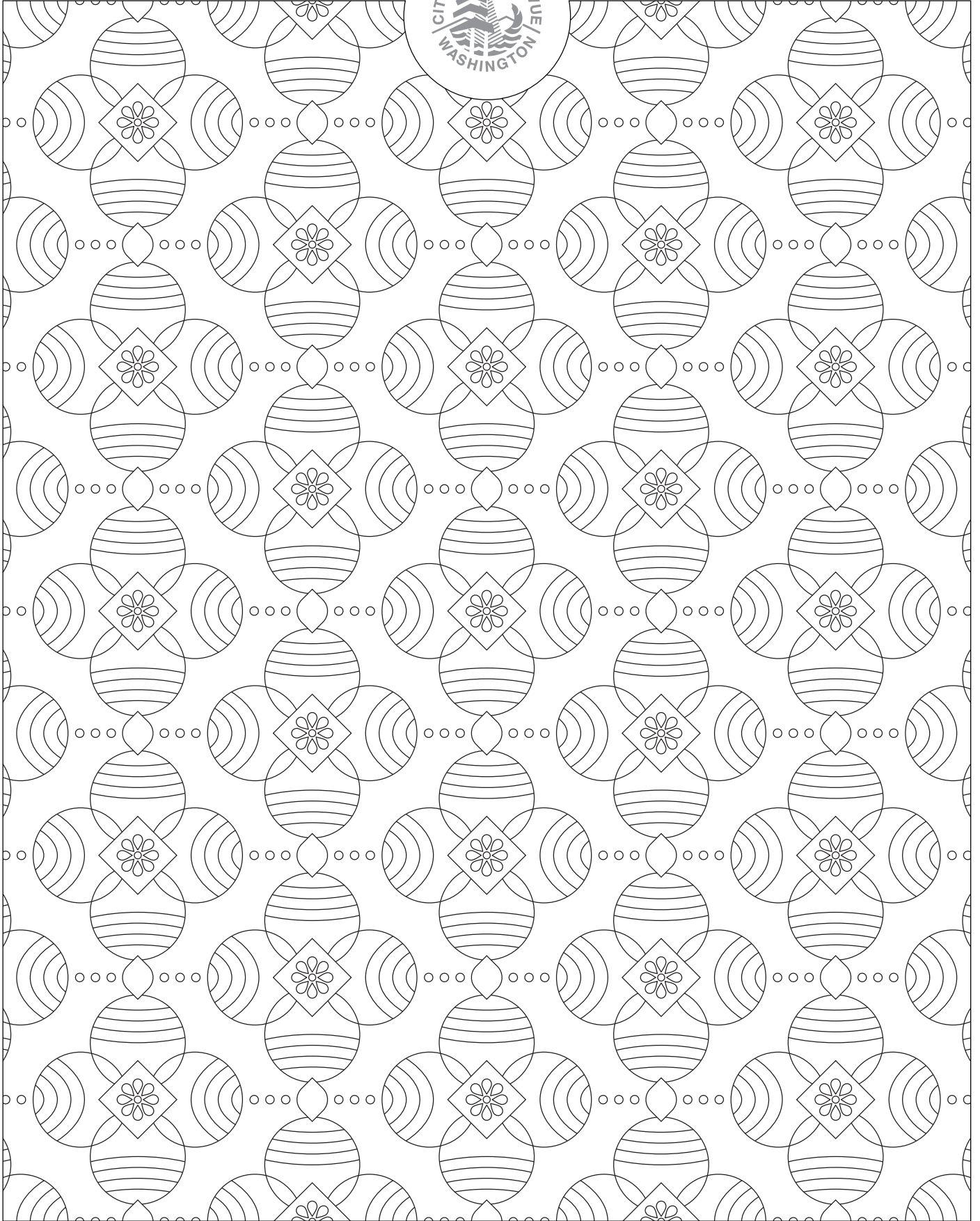
Strawberries and blueberries from farms located in Bellevue



Pattern design © Marsha Rollinger | marsharollinger.com

**FULL REPEAT TILE OF MAIN PATTERN WITH COLORS HIGHLIGHTING INSPIRED ELEMENTS**





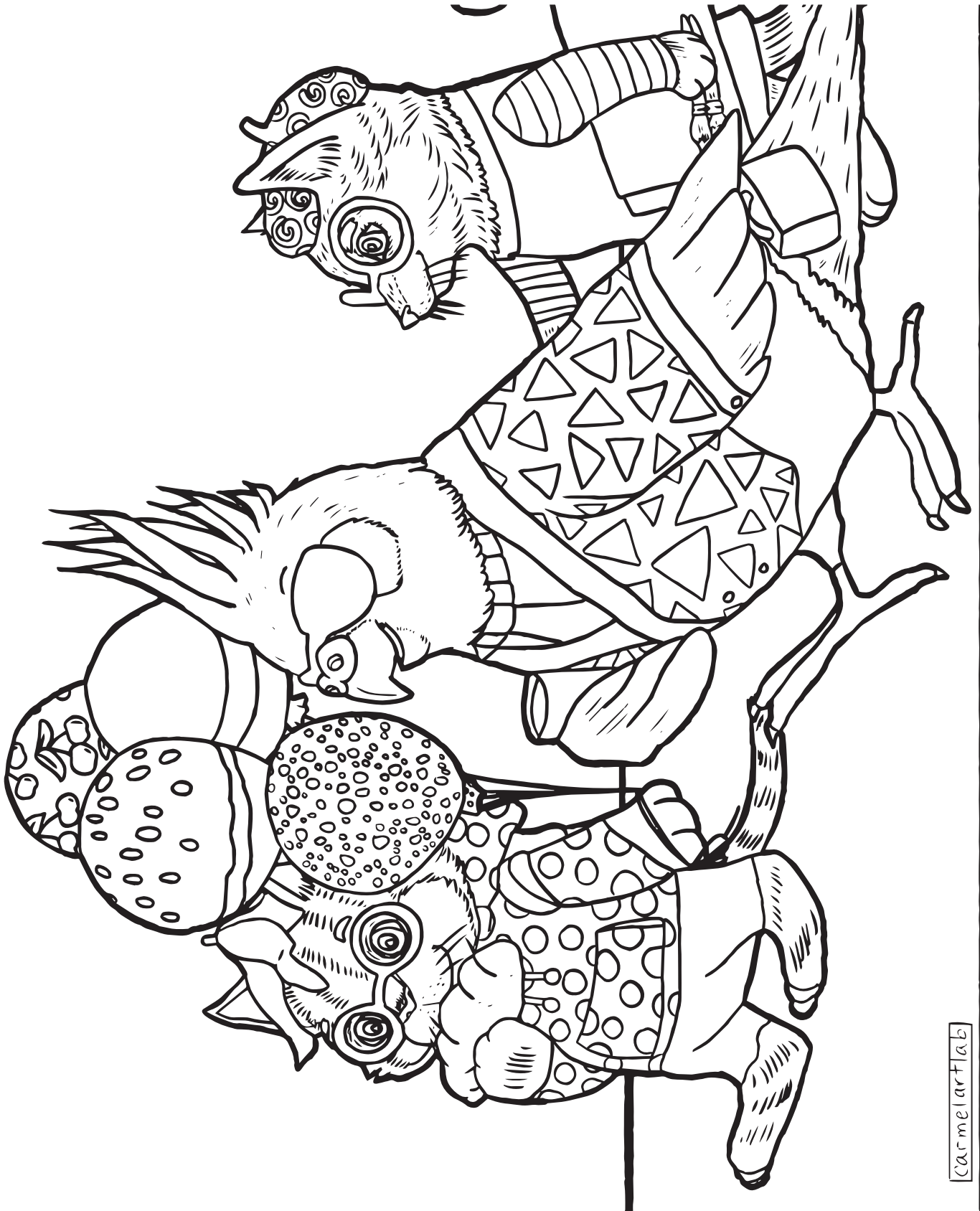


## A Tutti Fruit Crossing

These two utility box wrap pattern sets are designed by Carmel Mercado. The first two pages and the last two pages can be cut out and taped together to form a cohesive progression of animals, as seen below.

Mercado's wrapped utility box is located in Downtown Bellevue at NE 10th Street and 108th Avenue NE.





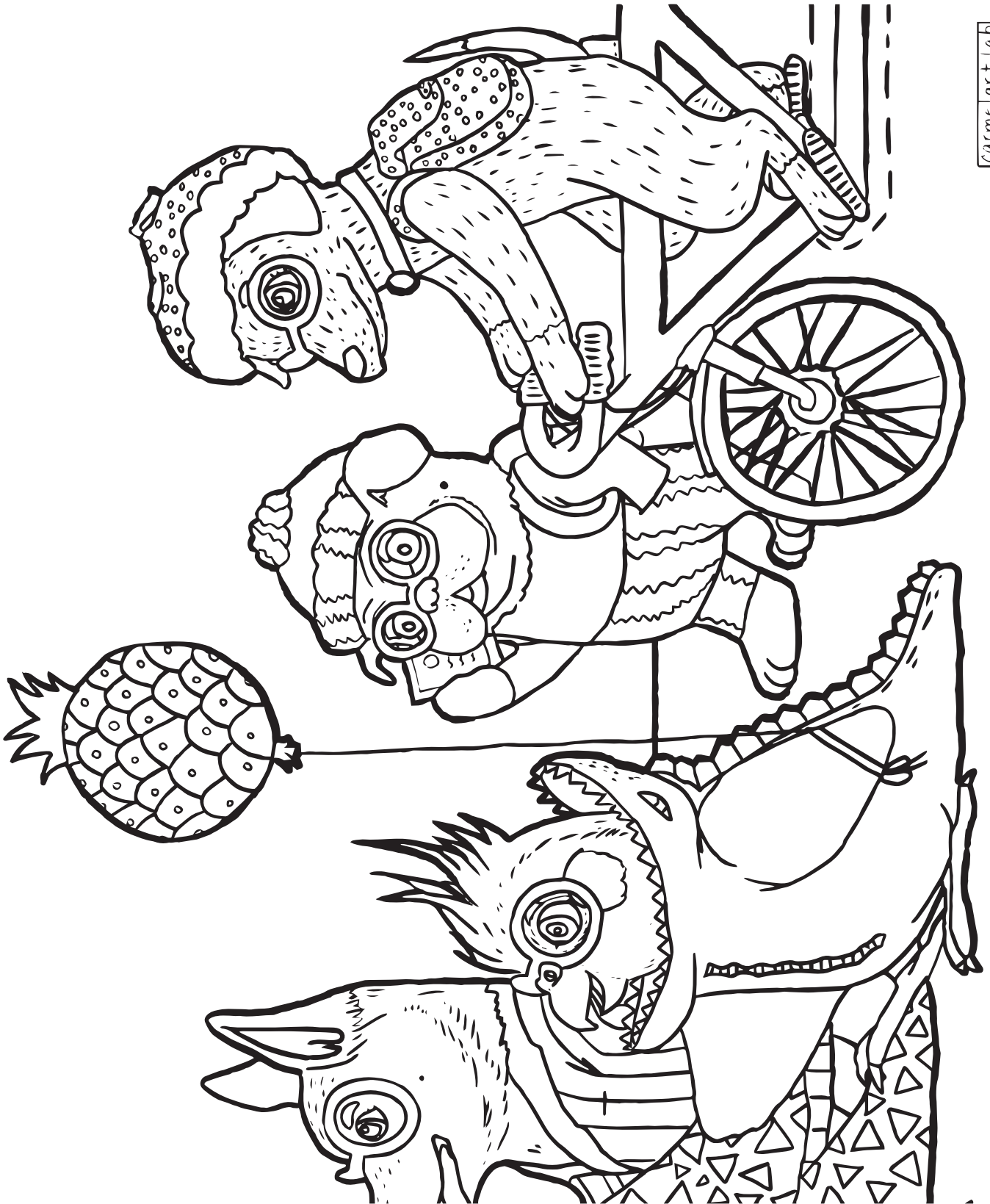
carmelartlab











## ***Colors of Joy I***

## ***Colors of Joy II***

These utility box wrap pattern sets are designed by Rohini Mathur. The body of work is titled *Colors of Joy I and II*, and in order, each following page artwork titles are thus: *Showstopper Sunflowers And Dreamy Peonies Have A Visitor*; *Heartwarming Sunflowers And Romance Roses With Wandering Butterflies*; *Fiery Dahlias And Poppies Garden Have A Curious Visitor*; and *Whispering Lilies And Sunshine Sunflowers With The Fluttering Friend*

Mathur's wrapped utility box is located in Downtown Bellevue on NE 10th Street between Bellevue Way and 106th Avenue NE.













