



Neighborhood News



January 2023



Save the Date:

Virtual Dr. Martin Luther King Jr. Celebration and Health Fair

Monday, Jan. 16 | 10-11:30 a.m.

The 2023 Virtual MLK Celebration and Health Fair will take place on Monday, Jan. 16, 10-11:30 a.m. The program theme this year is reinvesting in health, highlighting the importance of a holistic approach and concerted investment in personal wellbeing, so that you can maintain overall health, enjoy life and effectively serve your community.

The city is working with partners, including the Bellevue alumnae chapter of Delta Sigma Theta Sorority, to develop an engaging, informative and entertaining program for Dr. Martin Luther King Jr. Day.



For alternate formats, interpreters, or reasonable accommodation requests please phone at least 48 hours in advance 425-452-2735 (voice) or email mheilman@bellevuewa.gov. For complaints regarding accommodations, contact City of Bellevue ADA/Title VI Administrator at 425-452-6168 (voice) or email ADATitleVI@bellevuewa.gov. If you are deaf or hard of hearing dial 711. All meetings are wheelchair accessible.

The teachings of the Rev. King will be a prominent focus of the program. Content is expected to include a panel discussion, youth involvement, entertainment, presentations and resources for health screenings. Register for this event at eventbrite.com/e/2023-dr-martin-luther-king-jr-virtual-health-fair-and-celebration-tickets-476786660737

Check out BellevueWA.gov/mlk-health-fair for information in multiple languages and details on this year's program as elements are confirmed.

Final call:

An opportunity to join Centering Communities of Color Coordinating Team



Applications must be received by Tuesday, Jan. 3.

The City of Bellevue is welcoming applications from community members interested in joining the Centering Communities of Color Coordinating Team (CCC), which supports and guides the city's relationships with diverse communities in Bellevue. For more information, please visit: BellevueWA.gov/city-news/ccc-team-recruitment-22?utm_medium=email&utm_source=govdelivery

The three-year initiative includes a three-tiered approach:

- Develop trust through dialogue
- Build racial literacy skills through education and training
- Co-create recommendations for action

Subscribe to Neighborhood News electronically:
BellevueWA.gov/neighborhood-news

Sharing New Year traditions from around the World

Crossroads Community Center
16000 Northeast 10th Street, Bellevue
Tuesday, Jan. 17 | 1-2:30 p.m.

Celebrations of a new year may follow the Western calendar, the phases of the moon or dates tied to religious observances.

The January program will include a preview of Lunar New Year, "Year of the Rabbit," celebrated globally on Jan. 22. Bellevue residents Gazel Tan and Angela Cheung will share their traditions and ways we might participate locally.

Following the presentation, we'll enjoy tea, cultural treats and table conversation, as you share your own new year memories and traditions.



Cultural Conversations is a program in its 13th season and has transformed relationships and perspectives among diverse women in our community through education and storytelling.

For more information, accommodation needs and to register, please contact NeighborhoodOutreach@Bellevuewa.gov or 425-452-6836. Parking is available in front of the community center; the overflow lot is off NE 8th beside the fire station. Walk-off parking is not permitted at the nearby Crossroads Shopping Center.

For alternate formats, interpreters or reasonable accommodation requests, please phone at least 48 hours in advance at 425-452-6917 (voice) or email cross@bellevuewa.gov. For complaints regarding accommodations, contact the City of Bellevue ADA/Title VI Administrator at 425-452-6168 (voice). If you are deaf or hard of hearing, dial 711. All meetings are wheelchair accessible.



Neighborhood Enhancement Program is coming to the Eastgate/Factoria neighborhood area!

BellevueWA.gov/nep

Eastgate/Factoria NEP Virtual Kickoff Meeting

Wednesday, Jan. 25, 6:30 p.m.

Neighborhoodoutreach@bellevuewa.gov
for Zoom meeting link

The NEP process will launch in January for the Eastgate/Factoria area, which has been allocated \$370,000 for enhancements.

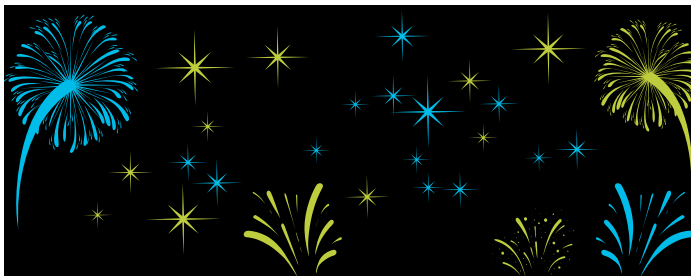
A virtual kickoff meeting will be held online Wednesday, Jan. 25, 6:30-8 p.m. City staff will provide you with a brief overview of the program guidelines and schedule, answer questions and invite residents to discuss and submit project ideas. Project managers will be available in breakout rooms for specific project discussions. Following the kickoff meeting, each household in Eastgate/Factoria will receive a postage-paid NEP Project Request Form in the mail. Residents are encouraged to use this form, or the online project request form on the NEP website, to submit as many NEP project requests by March 3.

The Neighborhood Enhancement Program (NEP) is a city-funded, capital improvements program that allows residents to propose and select projects that improve their neighborhood's quality of life and enhance its character. The program rotates through the city's 14 NEP Neighborhood Areas, serving two areas each year. In 2023, NEP kicks



off a new seven-year cycle of rotating through the 14 areas.

To find out which NEP Neighborhood Area you call home, when NEP will be in your area and how much funding your area has been allocated, please visit bellevuewa.gov/nep. For more information about NEP, please contact Theresa Cuthill at tcuthill@bellevuewa.gov.



South Bellevue Community Center celebrates 17 years

Jan. 9-14

14509 Southeast Newport Way, Bellevue

We're celebrating South Bellevue Community Center's 17th birthday with a variety of FREE classes, activities and programs Jan. 9-14.

Come celebrate with Indoor cycling, Cycle/stretch, Drop-in sports, Jazzercise, Adult line dancing, Fit 360, Active Adult Fitness, ZUMBA, Indoor play, Open Art Studio, Total Body Fitness, Yoga, Small group training, Family Drop-in basketball and Pilates.

For more details, visit BellevueWA.gov/city-government/departments/parks/community-centers/sbcc or call 425-452-4240.

Local Small Business Resource: Entrepreneurs' Roadmap

In 2023, the Eastside's Small Business Development Center (Washington SBDC) small business advisor, Shawn Palmer, will continue his impactful series of entrepreneurial workshops, Entrepreneurs' Roadmap, featuring topics including "Financing and Pricing Strategies" and "Employee Retention and Marketing."

In conjunction with SBDC advising services and OneEastside SPARK small business programming, Entrepreneurs' Roadmap is an impactful local resource for small businesses and aspiring

entrepreneurs to find their success amidst the challenges of launch, growth, and sustainability. Launching in 2023, OneEastside will introduce a group advising cohort consisting of six weekly meetings, covering many of the workshop topics in addition to some business fundamentals.

The Entrepreneurs' Roadmap series is presented live at the Bellevue Library. Check the library's calendar of events for more information: kcls.bibliocommons.com/v2/events?locations=1492; Shawn Palmer can be reached directly at ShawnP@OneEastside.org. To schedule a meeting, please access his online calendar: calendly.com/shawn-at-washingtonsbdc

City exploring changes to the land use code to enable micro-apartments

Bellevue is about to begin updating its land use code to remove barriers to constructing micro-apartments in mixed-use areas near jobs, shopping, services and transit. Micro-apartments are small square-footage units, typically 200-400 square feet in size, with a living/bedroom area, bathroom and kitchen. These small units offer lower-priced housing options for people moving to Bellevue, young professionals, students and individuals without children.

On Oct. 10, the Bellevue City Council initiated this work and directed the planning commission to process amendments to the land use code to encourage and enable micro-apartments. Amendments will address barriers relating to minimum parking requirements, multi-family play area standards, recycling areas and density limits. Additional details on this work can be found at bellevuewa.gov/micro-apartments.

The planning commission will begin reviewing code changes to encourage and enable micro-apartments in late January.

For more information on micro-apartment amendments, email mmenard@bellevuewa.gov or call 425-452-5264.



Bellevue Fire's CPR program is back!

Third Saturday of every month
9-11 a.m.

Bellevue Fire Station 1
766 Bellevue Way Southeast

After a two-year COVID-19 break, the Bellevue Fire Department is launching our new and improved resident CPR program. You can learn adult, child and infant CPR, choking interventions and how to properly use an AED (automated external defibrillator) from your neighborhood firefighters and paramedics. This no-cost, two-hour class will be held on the third Saturday of every month.

To facilitate immersive learning, class sizes will be capped at 10 participants with a minimum age of 10 years.

If you'd prefer to have us bring the class to you, we can schedule private training for groups of six or more at your location during a time and date that fits your schedule. This option has a cost of \$20 per student, which goes directly back into community instruction.

Please note that although our course meets and exceeds the guidelines established by the American Heart Association, it does not offer certification. If you require an American Heart Association certificate, please contact the Medic One Foundation ([mediconefoundation.org/programs/cpr/](https://www.mediconefoundation.org/programs/cpr/))

To register for Saturday classes or to schedule a private training, please email ems@bellevuewa.gov



Become a Neighborhood TreeAmbassador!

Applications are due Jan. 31.

Are you looking for an opportunity to learn about trees, collect volunteer service hours and build outdoor education skills? Consider becoming a Neighborhood Tree Ambassador!



Neighborhood Tree Ambassadors are volunteers who help to promote the value and benefits of trees in Bellevue by educating their friends and neighbors about the importance of urban trees and assisting with city efforts to preserve and plant more trees.

Ambassadors do not need any prior knowledge or experience. Neighborhood Tree Ambassadors will receive training in tree identification and environmental education techniques and will work with Bellevue's Urban Forestry Specialist to support Bellevue tree programs and support forestry projects in their neighborhoods.

Neighborhood Tree Ambassadors must attend three training workshops and participate in four education or outreach events over a one year period.

To learn more and apply, visit [BellevueWA.gov/city-government/departments/community-development/environmental-stewardship/trees-open-space-0](https://www.bellevuewa.gov/city-government/departments/community-development/environmental-stewardship/trees-open-space-0).

Please email cjenkins@bellevuewa.gov with questions.





Information on end-of-life resources from BNOA

Hospice services provide crucial assistance to persons who have a terminal condition, are expected to live fewer than six months, and have chosen to accept comfort or palliative care, instead of care to cure their terminal illness. Hospice can be provided at home, in an outpatient clinic or an inpatient facility. The care provided includes care by doctors, nurses, and social services, medicines and equipment for pain management, spiritual and grief counseling for the patient and family members, physical therapy, homemaker services, inpatient respite care and medical supplies.

Hospice provides needed and varied assistance, and is covered by Medicare, Medicaid, HMOs, the Veteran's Administration and most private health insurers.

In addition to utilizing hospice and palliative care, Washington residents with a terminal illness may have additional choices, and more information is available by the Washington State Department of Health: doh.wa.gov/you-and-your-family/illness-and-disease-z/death-dignity-act/frequently-asked-questions-about-death-dignity.

New map tracks which Bellevue streets have been plowed

In anticipation of snow and ice season, the city's Transportation Department launched an online map that tracks which streets are plowed almost in real time during winter weather events.

In a beta version still being tested and refined, the winter response map pulls data from GPS tracking technology attached to the city's snowplows, sanders and de-icers. During or right after a snowstorm, people considering going out on the roads can consult the map and see when a primary or secondary arterial street was most recently serviced. The map is only activated when a widespread snow or ice event occurs and is refreshed every hour.

When snow and/or ice accumulate in Bellevue, Transportation crews in the city's 15-truck fleet diligently work 12-hour day and night shifts to plow, sand and de-ice roads based on the snow response priority map: bit.ly/snow-resreponse-priority-map

Main streets are cleared before neighborhood ones to allow access for emergency vehicles, transit, school buses and commuter traffic.

After servicing, streets may still have ice, snow or slush. Always use caution when driving in winter conditions and leave extra distance when following snowplows or other vehicles.

To report road hazards such as flooding, fallen trees or blocked streets, call the city's 24-hour response line at 425-452-7840. For emergencies, call 911.

Bookmark the winter response map at bellevuewa.gov/winter-response-map to track when it is active and city crews are clearing snow and ice.





New Main Street Bridge open to vehicle traffic; full opening later this month

The new Main Street Bridge over I-405 partially reopened on Sunday, Nov. 20 and is scheduled to fully open at the end of this month. It is currently open to one lane of vehicular traffic in each direction.

Once fully open, the new bridge will feature two lanes in each direction, an eight-foot sidewalk and five-foot bike lane on one side, and a 12.5-foot multi-use path on the other side. The old Main Street Bridge, which was demolished in June, only had four-foot-wide sidewalks and no dedicated space for people bicycling. The new bridge was built by WSDOT's contractor as part of their I-405 Renton to Bellevue Widening and Express Toll Lanes project.

This replacement was required because the old bridge, built in the 1960s, would not accommodate the additional lanes on I-405 that are planned as part of the widening project. See [WSDOT.wa.gov/I405Widening](https://www.wsdot.wa.gov/I405Widening) for more information on this work. Look for updates on the City of Bellevue Transportation Department's Twitter, [@BvueTrans](https://twitter.com/BvueTrans), for when the new Main Street Bridge is fully opened!

New Choose Your Way Bellevue app available

Did you know that the city has resources to help you get around Bellevue more easily and economically? Choose Your Way Bellevue is an outreach program run by the city that provides information and resources for traveling throughout Bellevue. It is part of the city's effort to make the transportation system work better for everyone, regardless of how you are traveling.



At the end of 2022, Choose Your Way Bellevue released a new app for Apple and Android to make it even easier to access their services. The app provides you with:

- The ability to log trips with the tap of a calendar icon
- A convenient way to request custom commute assistance, a hardcopy bike map or sign up for informative newsletters
- Easy access to tools such as transit trip planners and real-time transit information
- Information about how to get around using transit, carpool, vanpool, walking, biking and about teleworking

In addition to offering these helpful services, you can earn a \$50 gift card just for logging 25 days of non-drive alone travel on the app or website! Visit ChooseYourWayBellevue.org/app to learn more, or search "Choose Your Way Bellevue" on your phone's app store.





Bellevue Essentials 10th Anniversary Event

Over 260 residents gathered at City Hall on Dec. 7 to celebrate 10 years of Bellevue Essentials graduates and their impact in our community!

Applications for the 2023 class will be accepted in May.

[BellevueWA.gov/city-government/departments/
community-development/neighborhoods/classes-and-
events/bellevue-essentials](https://BellevueWA.gov/city-government/departments/community-development/neighborhoods/classes-and-events/bellevue-essentials)



**Bellevue
Essentials**
CELEBRATING 10 YEARS OF IMPACT

Boards and Commissions Meetings

Stay updated on meetings and cancellations:
BellevueWA.gov

All meetings are conducted at City Hall unless otherwise noted. Agendas are subject to change. If a holiday occurs on a Monday, please check the updated calendar. Agendas can be downloaded from the city's web pages listed below. Meeting alerts are available through subscribing to the City's Special Meeting Notices page.
BellevueWA.gov/city-government/departments/city-clerks-office/special-meeting-notice

Bellevue Diversity Advisory Network

(6 p.m., Bellevue City Hall) Last Tuesday of each month
BellevueWA.gov/city-government/departments/city-managers-office/diversity/bellevue-diversity-advisory-network

Arts Commission (4:30 p.m., 1E-109)

First Tuesday of each month BellevueWA.gov/city-government/departments/community-development/arts-and-culture/arts-commission

Environmental Services Commission

(6:30 p.m., 1E-113) First Thursday of each month
BellevueWA.gov/city-government/departments/utilities/conservation-and-the-environment/environmental-services-commission

Planning Commission (6:30 p.m., 1E-113) Second and fourth Wednesday of each month BellevueWA.gov/city-government/departments/community-development/planning-commission

Transportation Commission

(6:30 p.m., 1E-113) Second Thursday of each month with fourth Thursday as needed.
BellevueWA.gov/planning/transportation-commission

Human Services Commission (6 p.m., 1E-113)

First and third Tuesday of each month BellevueWA.gov/city-government/departments/city-clerks-office/boards-and-commissions/human-services-commission

LEOFF 1 Disability Board (6 p.m., Room 1E-118) First Wednesday of each month BellevueWA.gov/city-government/departments/human-resources/retirees-former-employees/leoff-1-disability-board

Library Board (5p.m., Lake Hills, Bellevue or Newport Way Library) Third Tuesday of each month BellevueWA.gov/city-government/departments/city-clerks-office/boards-and-commissions/library-board

Parks & Community Services Board

(6 p.m., 1E-113) Second Tuesday of each month BellevueWA.gov/city-government/departments/city-clerks-office/boards-and-commissions/parks-and-community-services-board

The Bellevue Network on Aging (BNOA) 8:30 a.m., North Bellevue Community Center 4063 148th Ave NE, Bellevue) First Thursday of each month BellevueWA.gov/bnoa

Special Events Committee (8:30 a.m., 1E-112) Second Thursday of each month BellevueWA.gov/city-government/departments/city-clerks-office/boards-and-commissions/special-events-committee

Youth Link Board (6 p.m., 1E-120)

Second and fourth Wednesday of each month BellevueWA.gov/city-government/departments/city-clerks-office/boards-and-commissions/youth-link-board

Bellevue's Neighborhood Services Division offers a variety of programs and partnerships for neighborhood leaders and active residents. To learn more about citizen involvement opportunities and programs to enhance neighborhoods, please visit our website at: BellevueWA.gov/city-government/departments/community-development/neighborhoods or call 425-452-6836 or email: neighborhoodoutreach@bellevuewa.gov.

To subscribe to this newsletter, visit: BellevueWA.gov/neighborhood-news

City Council Bellevue.Legistar.com/Calendar.aspx

Day	Scheduled Meeting(s)	Location	Public Comment Opportunity
First four Mondays of each Month, except August and December	6 p.m. Regular Meeting	Council Chamber Bellevue TV channel 21 and BTV YouTube channel youtube.com/user/BellevueWashington	Emails to Council are accepted at council@bellevuewa.gov at any time. Further opportunities for public comment are published on each Council agenda and can be found at bellevue.legistar.com/Calendar.aspx
August – first Monday only			
December – first and second Mondays only			