



Neighborhood News



September 2022



WELCOMING WEEK



Welcoming Week 2022 in City of Bellevue

Sept. 9-18

The tenth year of Welcoming Week kicks off this month, a celebration of inclusion that is now a global movement. The City of Bellevue along with many other nearby communities is recognizing Welcoming Week, whose theme this year is "Where We Belong," with several events and activities designed to enhance community and create spaces that foster belonging, connection and learning. See below for scheduled events taking place in and near Bellevue this year.

"Celebrate Bellevue"

North Bellevue Community Center
Saturday, Sept. 10 | 10 a.m.-2 p.m.
Hosted by the City of Bellevue

Enjoy games, arts and crafts, cultural performances, food and a presentation from the Eastside Heritage Center.



For alternate formats, interpreters, or reasonable accommodation requests please phone at least 48 hours in advance 425-452-2735 (voice) or email mheilman@bellevuewa.gov. For complaints regarding accommodations, contact City of Bellevue ADA/Title VI Administrator at 425-452-6168 (voice) or email ADATitleVI@bellevuewa.gov. If you are deaf or hard of hearing dial 711. All meetings are wheelchair accessible.

Events:

- 10-11 a.m.: Eastside Heritage Center presentation on the history of Bellevue
- 11 a.m.-1 p.m.: Ian Dobson and his steel drum trio perform
- Noon-2 p.m.: Performance by Native American flutist Peter Ali

Food: For sale, La Chingona Taqueria taco truck

Other activities:

Games, lawn games, arts and crafts

"Ukrainian Fest"

Crossroads Park
Saturday, Sept. 10 | 10 a.m.- 8 p.m.
Supported by the City of Bellevue

The festival will feature Ukrainian customs including delicious and authentic Ukrainian food, vendor booths featuring local businesses, stage performances including bands, soloists, and choirs, and activities for children and adults, including inflatables, games and a trout fishing pond.

Continued on next page

Subscribe to Neighborhood News electronically:
BellevueWA.gov/neighborhood-news

Continued from previous page

"Bellevue Welcomes All at Mini City Hall"

Mini City Hall at Crossroads Shopping Center
Monday, Sept.12 | 2:30-4:30 p.m.
Hosted by the City of Bellevue

Join us for Welcoming Week and learn about how Mini City Hall offers a place where you belong and provides access to critical services. Mini City Hall has been serving the Bellevue community for more than 25 years. Mini City Hall has several partnerships that provide in-person services to assist a variety of different needs, including:

- Employment and Entrepreneurship Assistance, providing employment support and small business consultations.
- Indian American Community Services (IACS) programs, ranging from women's career services, early childhood education, crisis care, a youth leadership program and much more.
- SHIBA Specialists, providing one-on-one Medicare counseling appointments.
- Chinese Information Service Center (CISC), offering specialists who speak Russian & Chinese to help customers navigate public services and systems.
- King County Library System (KCLS), providing computer coaching geared toward beginners who want to improve their technical skills.

For more information, please visit BellevueWA.gov/mini-city-hall

"Cultural Conversations"

Crossroads Community Center
Tuesday, Sept.13 | 1-2:30 p.m.
Hosted by the City of Bellevue

Cultural Conversations begins a new season of storytelling and connection during Welcoming Week 2022. Aligning with the theme for this year's Welcoming Week, this Cultural Conversations session will explore places that foster belonging, how belonging occurs and how to welcome those newly arrived. Enjoy tea and table conversation as you immerse yourself in storytelling, reflecting on what you've learned during the past two years and discovering practices for welcoming work today.

"Planning for Just, Sustainable and Inclusive Communities"

Redmond City Hall
Friday, Sept. 16 | Noon-3 p.m.
Supported by the City of Bellevue

As our cities embark on major Comprehensive Plan Updates, we invite the community to explore the intersection of social justice, racial equity, urban planning, economic development, environmental sustainability, and placemaking. Event hosts include Eastside For All, Move Redmond, Eastrail Partners, Futurewise, and 350 Eastside. **Keynote Speaker: Julian Agyeman, Ph.D.**

Space is limited, register today at welcomingamerica.org, search "Planning"

RNR Marathon and 5K

Sept 3-4, 5:45 a.m.-11:30 a.m.
It's Time to Rock and Roll- and cheer on our 600 Bellevue participants!



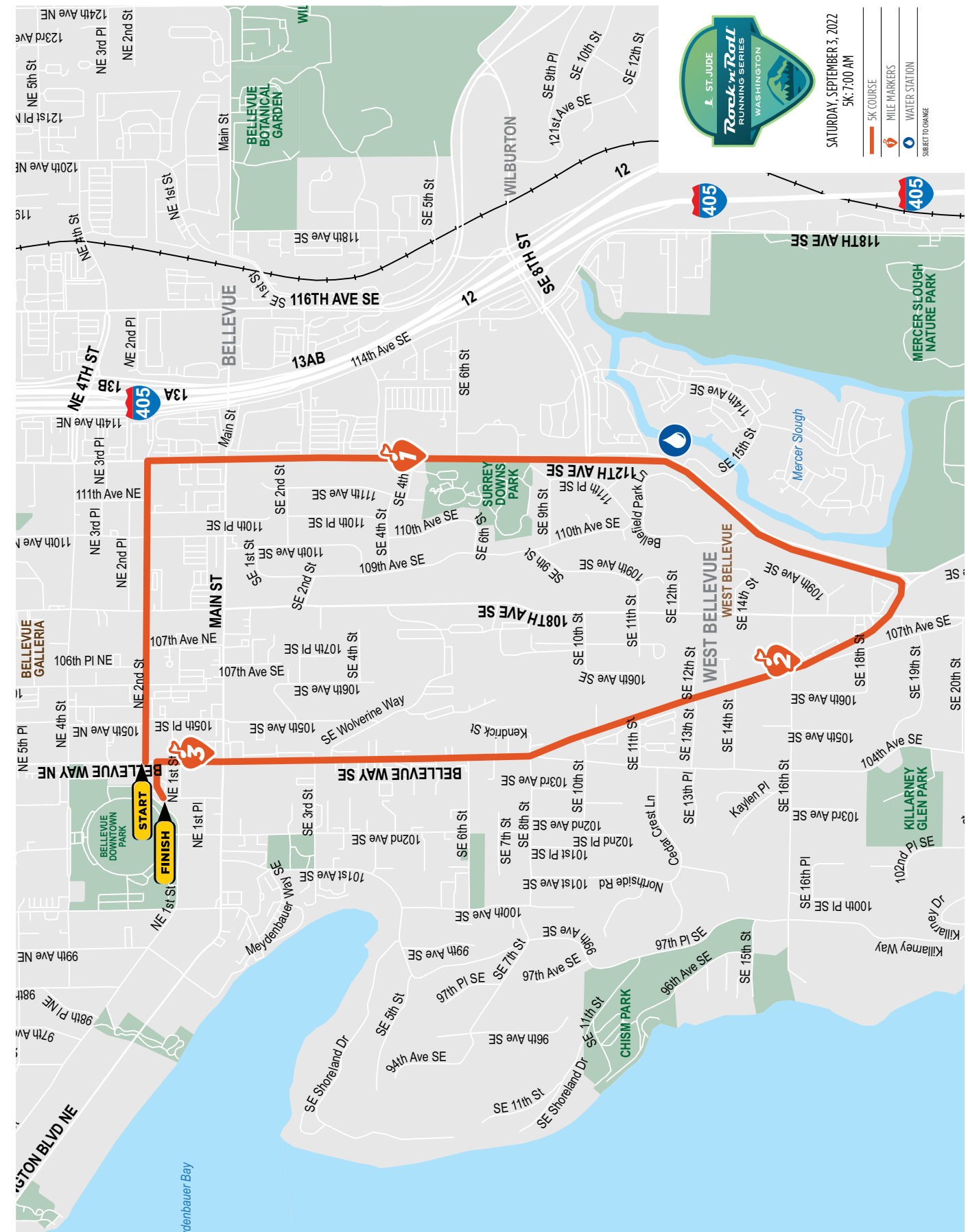
Streets throughout Bellevue will be rocking for the Rock 'n' Roll Washington running event Sept. 3-4. The event includes a 5K, half marathon and kids distance running events. It's the first time Bellevue plays host to the event, which brings thousands of runners and spectators to town and requires some road closures you should be aware of if you need to travel through Bellevue over Labor Day weekend.

The 5K takes place Saturday morning, Sept. 3, and the half marathon will be on Sunday morning, Sept. 4, with both events closing down some roads on the course between about 5:30 a.m. and noon. All details on road closures, detours, and times are available at runrocknroll.com/washington-road-closures.

The signature feature of Rock 'n' Roll running events is the music. There will be live bands stationed roughly every mile of the half marathon course playing for event participants and spectators on Sunday, so expect to hear tunes throughout Bellevue that morning. The course map with the locations of the live performances marked is at tinyurl.com/Bellevuehalfmarathon.

More event details, including interactive course maps for all events, detours, volunteer opportunities and event times are available at runrocknroll.com/washington. In addition,

event detours should be active on common GPS platforms including Waze, so use GPS apps to navigate around town during the morning hours of Sept. 3 and Sept. 4.



See insert for a street closures.

Neighborhood Enhancement Program Updates

Somerset Projects Open House
Tuesday, Sept. 13, 6:30-8 p.m.
South Bellevue Community Center
14509 SE Newport Way



Let us know that you're coming! Email:
neighborhoodoutreach@bellevuewa.gov

The opportunity to vote for your top three project choices is on the way! Look for your **NEP Voter's Pamphlet** to arrive in the mail in early September, and then return the enclosed postage-paid ballot. Voting is by mail only and is limited to one ballot per household address. Ballots must be postmarked by **Tuesday, Oct. 18** to be valid.

Newport residents: The votes are in! Look for your *NEP Project Announcement Newsletter* to arrive in mailboxes in mid-September with details on the projects that you and your neighbors chose to fund with the \$282,000 allotted NEP budget. Please let us know how you liked the NEP process in your area by returning the postage-paid evaluation form postcard, or submit your comments online using the NEP evaluation form found at BellevueWA.gov/nep

Evaluations must be postmarked or submitted online by **Thursday, Oct. 27**. The Neighborhood Enhancement Program is a city-funded program that allows residents to propose and select modest, capital projects to enhance their neighborhoods. The program rotates through the city's 14 NEP neighborhood areas, serving two areas each year. The \$5 million program allocation is distributed among each of the NEP neighborhood areas, according to the number of households in each area.

Comp Plan Corner Join Us for a Discussion on Housing

By Brooke Brod, Community Development Department

Housing is a key issue in Bellevue and throughout our region. It is the issue raised most often by community members. Over half of all respondents to the Bellevue 2044 Questionnaire said progress toward the city's vision to provide a range of

housing options that are affordable for people to rent or own was "below average" or "very poor".

Responses to the open-ended questions in the survey touched on a range of housing issues including, but not limited to, increased density, concern over tearing down smaller homes and replacing them with much larger homes, the importance of socio-economic diversity, the future of single-family neighborhoods, and a need for more affordable housing for low- and middle-income households.

"The largest issue is the lack of affordable housing. Teachers and workers important to our community cannot afford to live here. Long-time Bellevue homeowners are being priced out by large property taxes and forced to sell."

"Ensuring a mix of housing that allows a diverse population to live here, regardless of economic level, and to interact with each other."

"Over development in housing suburbs. Too much high density and condos ruining ecology and quality of life..."

Planning for a range of housing types at different affordability levels is a key focus of Bellevue's Periodic Update to the Comprehensive Plan. The plan will consider what types of housing are needed, where to put more housing, and how much housing it will take to meet our goals.

Community members are invited to join the Comprehensive Planning Team at the final **Community Deep Dive** discussion on **Thursday, Sept. 15**. During this interactive event, people will have an opportunity to explore data related to housing and housing affordability, speak with the planning team, and provide input that will help shape the direction of the city's work over the next twenty years.

The Community Deep Dive will take place at Bellevue City Hall at 450 110th Avenue NE. Doors will open at 5:30 p.m. for a self-paced review of data and the program will begin at 6 p.m. People can register at bellevue-2044-community-deep-dives.eventbrite.com. Anyone who cares about the future of Bellevue is welcome to attend. Light refreshments will be served.

To learn more about the Comprehensive Plan Periodic Update, share feedback, and find out how to get involved, visit engagingbellevue.com/bellevue-2044.

The City of Bellevue offers a new program for job and business support

Whether you are starting a new career or you're finally turning that business idea into reality, the beginning of these journeys can feel like being on a boat with open ocean in every direction. The city's Employment and Entrepreneurship Assistance program at Mini City Hall started at the end of May, and it has been a connection point for community members in starting their journey.

Program assistance examples have included:

- Hearing-based assistance for a resident trying to make career connections
- Spanish-language assistance for a resident pursuing a specific career opportunity
- A student was home for the holidays and wanted to transition to a career closer to home
- A house painter wanted to start their own business using the experience they gained through years of painting
- A language coach wanted to improve her business and connect with more customers

These members of the community were connected to resources to help them progress toward their goals step-by-step.

Bellevue is part of a vast network of assistance for careers and business on the Eastside, including the newly released Eastside Job Board, and the Employment and Entrepreneurship program at Mini-City Hall, which can be a first stop to connecting you on your journey.

Visit us on Mondays, 2:30-4:40 p.m. and visit bellevuewa.gov/biz for more information.

Addressing Homelessness in Bellevue

Homelessness is a complex issue being addressed in many ways throughout the city of Bellevue. From staff in libraries to patrol officers with

Bellevue Police Department, many people are involved in providing support to those in our community experiencing homelessness.

The City of Bellevue also has a Homelessness Outreach Program, facilitated by Nathan Hord, Homelessness Outreach Administrator and Nico Quijano, Homelessness Outreach Program Manager. Any time a resident in the city has a concern about homelessness or becomes aware of someone in need, they can notify Nico or Nathan via the MyBellevue app by clicking '+New Request' and selecting Homelessness Assistance and Outreach.

Nathan or Nico will respond to the request, setting expectations for a response to the requester and connecting with any individuals experiencing homelessness who might be involved in the request.

The City of Bellevue takes a "compassionate enforcement" approach to addressing homelessness, seeking both to connect to and support people with the resources they need for stability while also ensuring that city code is followed for the safety and well-being of all of Bellevue's residents. This can include visiting a site where an individual may be camping in order to identify what barriers they face in finding stable housing and working alongside law enforcement to help with enforcement of city code.

In addition to the Homelessness Outreach Program, the City of Bellevue has taken a number of steps to support the unhoused in our community. This includes funding and supporting the development of the soon-to-be-completed Eastside Men's Shelter in Bellevue, funding nonprofit human service organizations in the community, and working alongside many partners throughout the Eastside and the whole of King County.

You can find more information about Bellevue's efforts to address homelessness by going to BellevueWA.gov and searching for "homelessness in Bellevue." You can also contact Nico with any questions at NQuijano@bellevuewa.gov or 425-229-5819.

2023 Bellevue Arts Grants Program now open

Applications for 2023 grants are due Oct. 3.

Organizations and individuals providing art or cultural and educational programming, events or services for Bellevue residents can now apply for a grant through the City of Bellevue's Arts and Culture Program.

The Arts and Culture Program provides grants to nonprofits and individuals planning to deliver arts and culture programming in Bellevue or for Bellevue residents. This year, the program offers updated and more straightforward applications with new add-on grant opportunities for both programs. Program details for each are below:

- The Eastside Arts Partnership (EAP) Support grants offer two-year operating support to nonprofit organizations to support high-quality arts, cultural and heritage programs in Bellevue.
- The Projects grants provide one-time project support to artists and nonprofits for projects that fill cultural gaps and inspire new forms of creative participation, particularly for underserved groups.
- Through both grants, applicants can select to add on a bonus grant for additional funding.
- Applicants are eligible for either an EAP or Project grant; please review the eligibility criteria in the guidelines to determine which grant is best for you or your organization.

Interested individuals and groups can apply online. For the 2023 Arts Grants cycle, applications are due Oct. 3, 2022. An eligibility checklist is required before submitting a complete application.

All applications are reviewed by members of the professional arts community and the Bellevue Arts Commission. The Arts Commission and the Bellevue City Council approve the grants. Applicants can expect to know the status of their award in December 2022. All projects eligible for grant funding must occur in 2023.

Visit BellevueWA.gov/artsgrants for more information, including guidelines, FAQs, timelines, and directions to apply. Please get in touch with Manette Stamm at mstamm@bellevuewa.gov or 425-452-4064 with any questions.

Portable Art Collection Opening Reception

Wednesday, Sept. 14 | 5-7 p.m.

Bellevue City Hall Concourse and Mezzanine
450 110th Avenue Northeast

BellwetherArt.org

Join us as we celebrate more than 40 artists whose work recently entered the portable collection at the City of Bellevue during the COVID-19 pandemic. The artists' works span styles, subject matter and media, and are unified by artistic excellence.

Full lists of purchased work, along with artist bios and statements, can be found here: 2021 artworks ([BellevueWA.gov/sites/default/files/media/pdf_document/2021/Portable Art Collection 2021.pdf](https://BellevueWA.gov/sites/default/files/media/pdf_document/2021/Portable%20Art%20Collection%202021.pdf)), 2022 artworks ([BellevueWA.gov/sites/default/files/media/pdf_document/2022/COB Portable Art 2022.pdf](https://BellevueWA.gov/sites/default/files/media/pdf_document/2022/COB%20Portable%20Art%202022.pdf))

Planning home improvement projects inside or out? Development Services welcomes your questions!

Bellevue has welcomed many new residents to the city recently. Development Services staff understand that new homeowners often have improvements and other projects in mind to make a house, townhouse or condominium feel like their own.

Did you know that many projects both inside and outside of your home may require permits issued by the City of Bellevue? Whether you are adding living space, updating kitchens or bathrooms or you are creating an outdoor oasis in your backyard, we welcome your inquiries and can help you through the process.

Development Services reviews plans and issues permits for all sorts of projects, from landscaping to upgrading plumbing, or adding a deck or addition to your home. Our services ensure that projects are safe and aligned with federal, state and city codes. We strive to provide convenient options to meet the needs of all customers.

Learn more on our website: BellevueWA.gov/city-government/departments/development. We

have several ways for members of the community to connect with our knowledgeable staff. Schedule one-on-one time with Development Services staff by making a Virtual Permit Center appointment. Visit BellevueWA.gov/virtual-permit-center.

Whether you are brand new to Bellevue or have lived here for many years, Development Services staff are happy to answer questions about projects, permits and much more.

Learning about and living with dementia

The Bellevue Network on Aging would like to share information about dementia and related resources, as Alzheimer's disease and related dementia affects nearly six million people in the United States.



The National Institute on Aging defines dementia as: "the loss of cognitive functioning—thinking, remembering, and reasoning—to such an extent that it interferes with a person's daily life and activities." There are many types of dementia; the most common is Alzheimer's disease. Dementia is not a normal part of aging.

The Alzheimer's Association has a 24/7 helpline at 800-272-3900. The website of the Washington State Chapter of the Alzheimer's Association, alz.org/alzwa, has many useful articles on important topics including 'Know the 10 Signs', which shares early signs and symptoms of Alzheimer's, 'Alzheimer's & Dementia Treatments' and '10 Steps to Approach Memory Concerns in Others.'

The Alzheimer's Association also has information on support groups for caregivers and educational programs on Alzheimer's disease and dementia.

The Dementia Action Collaborative dshs.wa.gov/altsa/dementia-action-collaborative has created many useful resources available on their website. These include 'Dementia Road Map: A Guide for Family and Care Partners', which can be viewed in Spanish or English, 'Tip Sheets for Family and Care Partners', which gives caregivers

suggestions on how to handle challenges and situations with dementia, 'Dementia Legal Planning Toolkit', and 'Let's Talk Dementia', composed of short video features.

The University of Washington has programs, articles, and services relating to dementia including:

- Neurologists and dementia professionals at The Memory and Brain Wellness Center at Harborview who can be reached at 206-520-5000, or visit uwmedicine.org/locations/memory-wellness for more information;
- A handbook available online called "Living with Memory Loss, a Basic Guide" at depts.washington.edu/mbwc/resources/living-with-memory-loss;
- The Memory & Brain Wellness Center calendar, which lists forums and chats for persons with memory loss and their caregivers is available at depts.washington.edu/mbwc/calendar or call 206-744-2190.

Momentia (momentiaseattle.org) is an organization that publishes a monthly calendar of activities and events for persons with memory loss and their care partners. Some of the programs are virtual and others are in-person. For information, visit the website or call Dan Lassiter at the North Bellevue Community Center at 425-452-7681.

Bellevue programs Overlake Medical Center has a senior health clinic and also offers a free program on the third Monday of each month, "Caring for the Caregiver". For more information or to register for this program contact Regina Bennett at 425-643-4943. The North Bellevue Community Center (NBCC) at 425-452-7681 has activities that are dementia friendly with the help of one's caregiver such as Coffee & Coloring, Fridays at 9:30 a.m. and the NBCC chorus on Friday at 10:30 a.m. On September 7, the NBCC has arranged a walk at the Bellevue Botanical Gardens for persons with dementia and their caregivers who have registered.

Evergreen Health, 425-899-6800, has a memory clinic for persons at least age 65 who are concerned about memory loss. Because Bellevue residents do not reside in King County Public Hospital District No. 2, they cannot participate in this program. HOWEVER, there appears to be an exception for Bellevue seniors who are on Medicaid.

Bellevue's Tree Tours are back!

Our popular Tree Tours Program is returning after being on hold due to COVID-19. As a part of our Neighborhood Tree Ambassador Program (BellevueWA.gov/city-government/departments/community-development/environmental-stewardship/trees-open-space-0), community volunteers create and lead walking tours of the trees in their neighborhoods.



This fall we are featuring a Wilburton Hill Park tour and Kelsey Creek Park tour. Each tour will take you along trails through parts of the respective park. The Wilburton Hill Park tour lasts approximately 1.5 hours and discusses trees as a part of Bellevue's history in 1 mile. The Kelsey Creek Park tour is a short $\frac{3}{4}$ mile walk that will introduce you to 40 different trees and their benefits in less than an hour.

Take a tour and enjoy the fresh air, learn about some of the area's fascinating trees, and deepen your connection with your neighborhood. You can sign up for the tours signupgenius.com/go/10C0F4EAAA22A2FAC61-city

Note that the tours contain sections with steep terrain and uneven surfaces. It is recommended you wear closed-toe shoes. For more information about the program and to see a PDF of the tour maps BellevueWA.gov/city-government/departments/community-development/environmental-stewardship/trees-open-space/trees



Wilburton Vision Implementation

Janet Shull, Community Development Department



Bellevue is proactively planning for growth and change over the next twenty years. The Wilburton Vision Implementation initiative will transform the west edge of Wilburton into Bellevue's next mixed-use, transit- and trail-oriented area that supports future housing, jobs, and amenities for Bellevue's growing and diverse communities. The city will implement the vision established by a Citizen Advisory Committee (CAC) in 2018 by amending city policies and development regulations. The effort is being coordinated with the Comprehensive Plan Periodic Update so that changes in Wilburton fit within the citywide 20-year vision for accommodating housing and job growth.

Your ideas can help shape future land use alternatives and policies for the Wilburton study area. Citywide growth targets, housing policy, affordable housing, Grand Connection and Eastrail integration, sustainability, equitable access, multimodal access, and universal design will all be considered. To share your ideas for enhancing and implementing this vision, here are a couple of things you can do today:

- **Learn** about the Wilburton Vision Implementation initiative and project timeline, view and download related reports and presentations, and sign up for initiative updates at Wilburton Vision Implementation, City of Bellevue (BellevueWA.gov/city-government/departments/community-development/planning-initiatives/wilburton)
- Share your voice through our Wilburton Questionnaire and Interactive Map of the study area at Wilburton Vision

Implementation, Engaging Bellevue
engagingbellevue.com/wilburton-vision-implementation



- Objects such as a damaged mailbox, fallen fence, garbage can, hazardous tree, junk or other obstruction that impacts the city right-of-way.

Did you know?

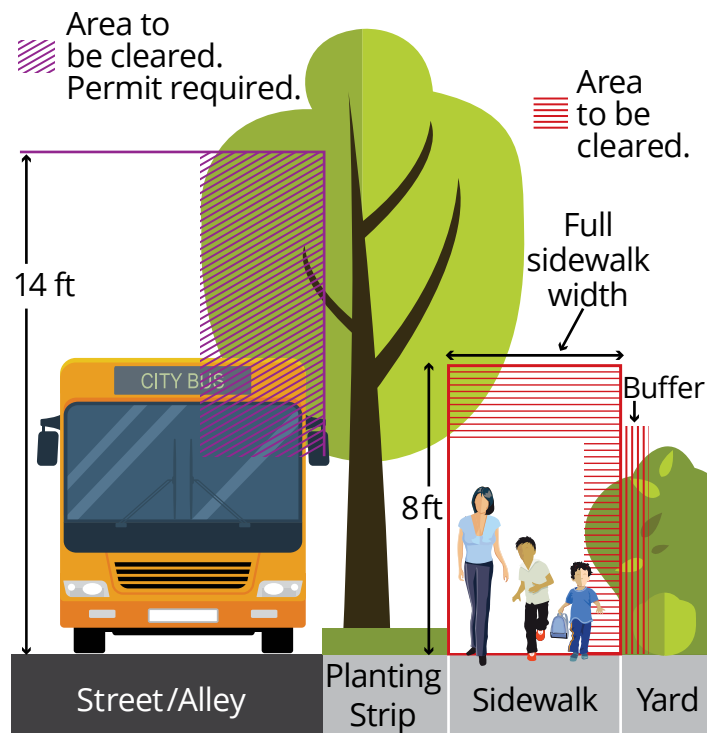
- By law (Bellevue City Code 14.06.010 | bellevue.municipal.codes/BCC/14.06.010), property owners are responsible for trimming or removing vegetation that overhangs a sidewalk, street or other public right-of-way, obstructs the vision of an intersection or causes one of several other obstructions.
- Vacant residences in the City of Bellevue are subject to specific property maintenance requirements for overgrown vegetation, in addition to the transportation and right-of-way provisions. The city's Code Compliance team works to provide comprehensive education and consistent, fair, equitable and responsive enforcement that promotes voluntary compliance with Bellevue's code. The team responds to concerns about possible code violations on private property. Suspected violations can be reported via the [MyBellevue app](#).

Maintain a safe environment by trimming overgrown vegetation

The Transportation Department's Street Maintenance division works to maintain all public streets in Bellevue. You can do your part to help the city maintain a safe environment for people who walk, roll, bicycle, drive and take transit by trimming overgrown vegetation on your property that might be encroaching into sidewalks, parking areas or streets.

When trimming trees, plants, shrubs or vegetation that has encroached into the city's right-of-way, watch for and correct the following:

- Vegetation or limbs that block street visibility for drivers or other road users.
- Vegetation overhanging or obstructing a street or sidewalk.
- Vegetation or limbs blocking the view of a traffic control sign.



A little “sweat equity” can greatly reduce the spread of a wildland fire

We may have made it through a record-breaking wet spring that crept into summer, but we are not out of the woods when it comes to urban wildland fire risk. In fact, September is historically an active month for wildland fires in Washington.

One of the many benefits of living in Bellevue, the abundance of trees and lush vegetation, is also



the source of our greatest wildland fire risk. We all need to do our part to keep our homes and neighborhoods safe from everything from small beauty bark smolders to large brush fires.

Fortunately, all it takes is a little sweat equity and minimal time to maintain our landscaping and protect our homes. In 60 minutes, you can greatly decrease the risk of a wildland fire spreading. Grab your gloves, pruners and rakes and start with cutting back overgrown vegetation and removing dead plant and tree materials, such as leaves and needles, from under shrubs and around your home. Not only will these steps make your home more attractive, but they will also positively influence fire behavior by decreasing available fuels.

More information on home wildland fire mitigation strategies is available at [nfpa.org/-/media/Files/Firewise/Fact-sheets/FirewiseHowToPrepareYourHomeForWildfires.pdf](https://www.nfpa.org/-/media/Files/Firewise/Fact-sheets/FirewiseHowToPrepareYourHomeForWildfires.pdf).

Crosswalk enhancements coming to intersections near light rail

As part of the East Link Station Area Crosswalk Enhancements project, the Transportation Department will install continental-style crosswalks (crosswalks containing thick, highly visible stripes like in the image to the **left/right/above/below**) at more than 20 intersections near six light rail stations.

These pavement markings will allow drivers to better anticipate pedestrians in locations that will experience increased



pedestrian travel when light rail opens. Additionally, these updated markings will meet Bellevue’s new high-visibility crosswalk design standards. Work is expected to begin and finish this fall.

Flashing beacons and radar signs arriving at locations around the city

The Transportation Department will replace or add new radar signs to address speeding concerns at various intersections in Bellevue, including the 3000 and 3200 blocks of 113th Avenue Southeast, 116th Avenue Southeast and Southeast 65th Place and Highland Drive near Southeast 46th Place. A radar sign paired with a school zone flashing beacon will be installed in the 20-mph school zone near Sherwood Forest Elementary on Northeast 24th Street at 167th Avenue Northeast.



Radar signs are an effective tool for reducing vehicle speeds by encouraging drivers to slow down.

Bennett and Cougar Ridge elementary schools will see the replacement of nine solar-powered school zone flashing beacons. Near Bennett Elementary, locations include the 1400 block of 176th Place Southeast and the 1800 and 1400 blocks of 180th Avenue Northeast. Near Cougar Ridge Elementary, locations include the 4500 and 4700 blocks of 164th Avenue Southeast, 16500 and 16700 blocks of Southeast 46th Street and 4200 and 4700 blocks of 171st Avenue Southeast.

These beacons are an effective measure for reducing the speed of people driving in school zones. When flashing, the school zone speed is 20 mph whether children are present or not.

Back-to-school time calls for increased awareness on the roads

The 2022-2023 school year has begun! Bellevue School District classes start Sept. 1, and children in the Issaquah School District returned to class on Aug. 30.

A reminder that the start of the school year brings more activity and traffic around schools during the morning arrival and afternoon dismissal times. Please drive safely and observe the following safety tips:

- Slow down and watch out for kids walking, biking, and rolling around schools, especially at intersections, crosswalks, and when entering and exiting school parking lots.
- When picking up or dropping off children at school, park responsibly and follow parking laws. Stopping in the middle of the street for drop-off/pick up is unsafe for kids and can create unnecessary traffic jams.
- Follow the 20 mph speed limit in school zones.
- If you are commuting, please find alternative routes around schools to avoid traffic congestion during the arrival and dismissal times.
- Pay attention while driving; don't be distracted by electronic devices/cell phones.

The city is committed to safe streets and has endorsed Vision Zero principles. Bellevue's Vision Zero initiative is an effort to eliminate traffic deaths and serious-injury collisions on city streets by 2030. See BellevueWA.gov/VisionZero for more information.

A key Vision Zero action item is conducting Road Safety Assessments (RSAs)— a tool proven to identify safety issues — near schools. If you'd like to participate, please visit EngagingBellevue.com/road-safety to respond to a questionnaire about safety and comfort while walking or biking along streets in the RSA areas. You can also join a walking audit near Lake Hills and Phantom Lake Elementary Schools, Big Picture and Tillicum Middle Schools, or International and Newport High Schools during this school year.

To learn more about school traffic safety, including information on the Bellevue SchoolPool Program, Walk & Roll to School Day, PedBee and more, visit BellevueWA.gov/schooltrafficsafety.

Bellevue's Main Street Bridge and Eastrail Taking Shape

WSDOT and their contractor continue to make progress on the new Main Street Bridge. New girders crossing I-405 were put in place in mid-August. The old Main Street Bridge was demolished in June, and the new bridge will allow for the expansion of I-405 as part of the state's I-405/Renton to Bellevue Widening and Express Toll Lanes Project. See WSDOT.wa.gov/I405Widening for more information.

This project also includes construction of portions of King County's Eastrail. When completed, the trail will be 42 miles long and connect Bellevue to Renton, Kirkland, Woodinville, Snohomish and Redmond. Girders were set on Aug. 15 and 16 for a new bridge over I-405 specifically for people who walk and roll. To learn more about Eastrail, including an interactive map and the latest news, visit KingCounty.gov/Eastrail.



Boards and Commissions Meetings

Stay updated on meetings and cancellations:
BellevueWA.gov

All meetings are conducted at City Hall unless otherwise noted. Agendas are subject to change. If a holiday occurs on a Monday, please check the updated calendar. Agendas can be downloaded from the city's web pages listed below. Meeting alerts are available through subscribing to the City's Special Meeting Notices page.
BellevueWA.gov/city-government/departments/city-clerks-office/special-meeting-notice

Bellevue Diversity Advisory Network

(6 p.m., Bellevue City Hall) Last Tuesday of each month
BellevueWA.gov/city-government/departments/city-managers-office/diversity/bellevue-diversity-advisory-network

Arts Commission (4:30 p.m., 1E-109)

First Tuesday of each month BellevueWA.gov/city-government/departments/community-development/arts-and-culture/arts-commission

Environmental Services Commission

(6:30 p.m., 1E-113) First Thursday of each month
BellevueWA.gov/city-government/departments/utilities/conservation-and-the-environment/environmental-services-commission

Planning Commission (6:30 p.m., 1E-113) Second and fourth Wednesday of each month BellevueWA.gov/city-government/departments/community-development/planning-commission

Transportation Commission

(6:30 p.m., 1E-113) Second Thursday of each month with fourth Thursday as needed.
BellevueWA.gov/planning/transportation-commission

Human Services Commission (6 p.m., 1E-113)

First and third Tuesday of each month BellevueWA.gov/city-government/departments/city-clerks-office/boards-and-commissions/human-services-commission

LEOFF 1 Disability Board (6 p.m., Room 1E-118) First Wednesday of each month BellevueWA.gov/city-government/departments/human-resources/retirees-former-employees/leoff-1-disability-board

Library Board (5p.m., Lake Hills, Bellevue or Newport Way Library) Third Tuesday of each month
BellevueWA.gov/city-government/departments/city-clerks-office/boards-and-commissions/library-board

Parks & Community Services Board

(6 p.m., 1E-113) Second Tuesday of each month
BellevueWA.gov/city-government/departments/city-clerks-office/boards-and-commissions/parks-and-community-services-board

The Bellevue Network on Aging (BNOA) 8:30 a.m., North Bellevue Community Center 4063 148th Ave NE, Bellevue) First Thursday of each month BellevueWA.gov/bnoa

Special Events Committee (8:30 a.m., 1E-112) Second Thursday of each month BellevueWA.gov/city-government/departments/city-clerks-office/boards-and-commissions/special-events-committee

Youth Link Board (6 p.m., 1E-120)

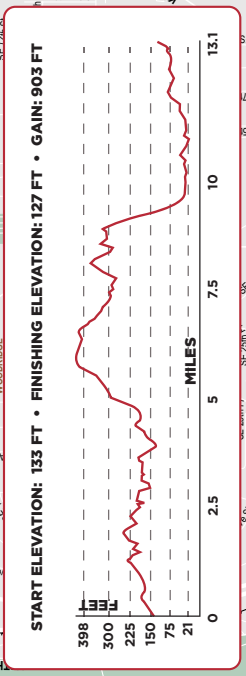
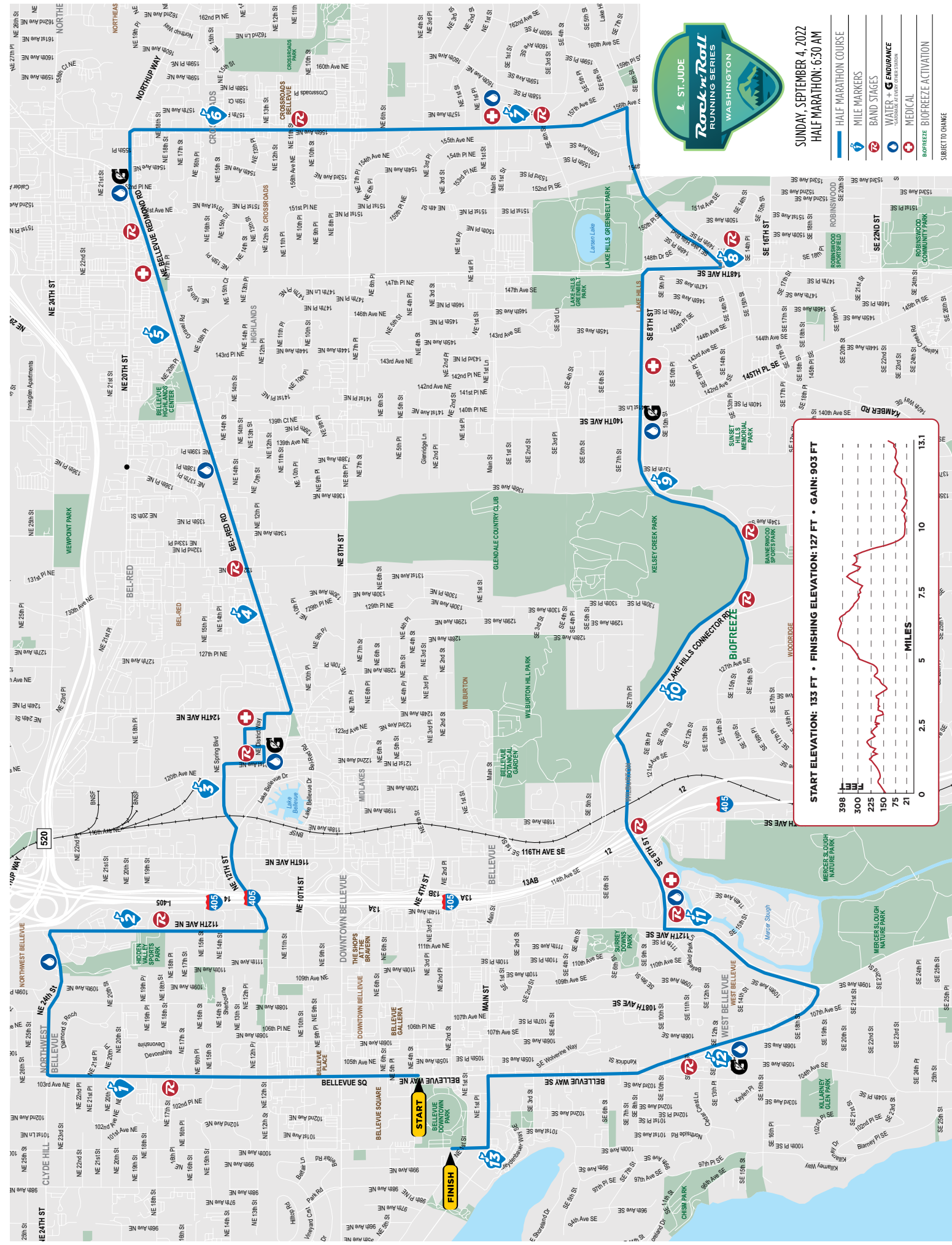
Second and fourth Wednesday of each month
BellevueWA.gov/city-government/departments/city-clerks-office/boards-and-commissions/youth-link-board

Bellevue's Neighborhood Services Division offers a variety of programs and partnerships for neighborhood leaders and active residents. To learn more about citizen involvement opportunities and programs to enhance neighborhoods, please visit our website at: BellevueWA.gov/city-government/departments/community-development/neighborhoods or call 425-452-6836 or email: neighborhoodoutreach@bellevuewa.gov.

To subscribe to this newsletter, visit:
BellevueWA.gov/neighborhood-news

City Council Bellevue.Legistar.com/Calendar.aspx

Day	Scheduled Meeting(s)	Location	Public Comment Opportunity
First four Mondays of each Month, except August and December	6 p.m. Regular Meeting	Council Chamber Bellevue TV channel 21 and BTV YouTube channel youtube.com/user/BellevueWashington	Emails to Council are accepted at council@bellevuewa.gov at any time. Further opportunities for public comment are published on each Council agenda and can be found at bellevue.legistar.com/Calendar.aspx
August – first Monday only			
December – first and second Mondays only			



SUNDAY, SEPTEMBER 4, 2022
HALF MARATHON: 6:30 AM

- | |
|---|
| HALF MARATHON COURSE |
| MILE MARKERS |
| BAND STAGES |
| WATER + ENDURANCE
MANAGE AT EVERY OTHER STATION |
| MEDICAL |
| BIOFREEZE ACTIVATION |
| SUBJECT TO CHANGE |



ROCK 'N' ROLL WASHINGTON 5K & HALF MARATHON ROAD CLOSURES | SUNDAY SEPTEMBER 3RD & 4TH, 2022

STREET	FROM	TO	SIDE OF ROAD	BEGIN	END
SATURDAY SEPT 3RD, 2022					
FINISH LINE VENUE					
100th Ave NE	NE 4th St	Main St	Whole Road	Sat 7:00 AM	Sun 3:00 PM
SAT 5K CLOSURES					
NE 2nd St/NE 1st	Bellevue Way NE	102nd Ave NE	Whole Road	5:00 AM	9:00 AM
NE 2nd St	Bellevue Way NE	112th Ave NE	Whole Road	6:45 AM	7:45 AM
112th Ave NE	NE 2nd St	Bellevue Way SE	Southbound	6:45 AM	8:15 AM
Bellevue Way SE	112th Ave NE	NE 2nd St	1 Southbound Lane	6:45 AM	8:45 AM
SUNDAY SEPT 4TH, 2022					
START LINE VENUE					
Bellevue Way NE	NE 4th St	NE 2nd St	Whole Road	2:00 AM	9:30 AM
Bellevue Way NE	NE 2nd St	Main St	Whole Road	2:00 AM	12:00 PM
COURSE					
Bellevue Way NE	NE 4th St	NE 8th St	Whole Road	5:45 AM	8:15 AM
Bellevue Way NE	NE 8th St	NE 24th St	Northbound	5:45 AM	8:15 AM
Southbound Bellevue Way NE remains open down to NE 8th St					
NE 24th St	Bellevue Way NE	112th Ave NE	Whole Road	5:45 AM	8:15 AM
112th Ave NE	NE 24th St	NE 12th St	Northbound	5:45 AM	8:15 AM
Southbound 112th Ave NE remains open down to NE 12th St					
NE 12th St	112th Ave NE	NE Spring Blvd	Westbound	5:45 AM	8:30 AM
Eastbound NE 12 St remains open					
NE Spring Blvd	NE 12th St	124th Ave NE	Eastbound	5:45 AM	8:30 AM
121st Ave NE	NE Spring Blvd	NE District Way	Whole Road	5:45 AM	8:30 AM
NE District Way	121st Ave NE	124th Ave NE	Whole Road	5:45 AM	8:30 AM
122nd Ave NE	NE District Way	NE 14th Terrace	Whole Road	5:45 AM	8:30 AM
NE 14th Terrace	121st Ave NE	123rd Ave NE	Whole Road	5:45 AM	8:30 AM
123rd Ave NE	NE 14th Terrace	NE District Way	Whole Road	5:45 AM	8:30 AM
124th Ave NE	NE Spring Blvd	Bel-Red Rd	Southbound	5:45 AM	8:30 AM
Northbound 124th Ave NE only accessible to traffic via Westbound Bel-Red Rd					
Bel-Red Rd	124th Ave NE	152nd Place NE	Eastbound	5:45 AM	9:15 AM
NE 20th St	152nd Place NE	156th Ave NE	Eastbound	5:45 AM	9:15 AM
156th Ave NE	NE 20th St	NE 8th St	1 Northbound Lane	5:45 AM	9:45 AM
1 Northbound Lane & all Southbound Lanes on 156th Ave NE remain open					
156th Ave NE	NE 8th St	Lake Hills Blvd	Southbound	5:45 AM	9:45 AM
Northbound 156th Ave NE remains open					
Lake Hills Blvd	156th Ave SE	148th Ave SE	Westbound	5:45 AM	10:00 AM
Eastbound access from SE 5th Ct to 148th Ave SE					
148th Ave SE	Lake Hills Blvd	SE 8th St	Southbound	5:45 AM	10:00 AM
Northbound 148th Ave SE remains open					
SE 8th St	148th Ave SE	140th Ave SE	Eastbound	5:45 AM	10:15 AM
Westbound SE 8th St remains open to Northbound 140th Ave SE					
Lake Hills Connector	140th Ave SE	SE 8th St/SE 7th Place	Westbound	5:45 AM	10:45 AM
Eastbound Lake Hills Connector remains open to Southbound 140th Ave SE					
SE 8th St	Lake Hills Connector	112th Ave SE	Westbound	5:45 AM	10:45 AM
Eastbound SE 8th St remains open to Eastbound Lake Hills Connector					
112th Ave SE	SE 8th St	Bellevue Way SE	Southbound	5:45 AM	11:00 AM
Northbound 112th Ave SE remains open					
Bellevue Way SE	112th Ave SE	SE 16th St	Whole Road	5:45 AM	11:15 AM
Bellevue Way SE	SE 16th St	Main St	1 Southbound Lane	5:45 AM	11:30 AM
1 Southbound Lane & all Northbound Lanes remain open to/from Main St					
Main St	Bellevue Way SE	100th Ave NE	Whole Road	5:45 AM	11:30 AM