



# Neighborhood News

June 2022

## Juneteenth observations recognize historic, symbolic day of freedom

City of Bellevue facilities will be closed on Monday, June 20, in observance of Juneteenth and the city will raise the Juneteenth flag at city facilities from June 17-24.

Although the Emancipation Proclamation came 2½ years earlier on January 1, 1863, many enslavers continued to hold enslaved

Black people captive after the announcement. Juneteenth became a symbolic date representing African American freedom, and we recognize this day as the promise and lasting hope for freedom for African Americans. We gather and celebrate family, remember the past and honor the commitment to continue the essential work for attaining racial equity and social justice.



Also, we'd like to offer some suggestions on what the community can do to learn more about Juneteenth:

- Take time for reflection on that day, and discuss the following with friends and family, "How has African American culture influenced your life?"
- Consider making the holiday a day of service
- Drop by City Hall to see the "Unspoken Truth" traveling museum display and hear from storyteller Delbert Richardson Friday, June 10 and Monday, June 13.

## New Employment and Entrepreneurship Guidance Program at Mini City Hall

Bellevue Mini City Hall is returning to pre-pandemic operations at the Crossroads Shopping Center this summer and we are excited to kick off a new program to provide employment support and small business services to the community.

The City of Bellevue is fueled by an entrepreneurial, diverse and supportive community with a wealth of talent and skills. Connecting residents and business owners to resources and opportunity builds a better Bellevue for the future. If you want to explore employment opportunities but not sure what career is right for you or you have always dreamed about starting your own business, you are invited to come by for a visit every Monday 2:30-3:30 p.m. at Bellevue Mini City Hall, inside the Crossroads Shopping Center, 15600 NE 8th Street, Bellevue.



For alternate formats, interpreters, or reasonable accommodation requests please phone at least 48 hours in advance 425-452-2735 (voice) or email [mheilman@bellevuewa.gov](mailto:mheilman@bellevuewa.gov). For complaints regarding accommodations, contact City of Bellevue ADA/Title VI Administrator at 425-452-6168 (voice) or email [ADATitleVI@bellevuewa.gov](mailto:ADATitleVI@bellevuewa.gov). If you are deaf or hard of hearing dial 711. All meetings are wheelchair accessible.

Subscribe to Neighborhood News electronically:  
[BellevueWA.gov/neighborhood-news](http://BellevueWA.gov/neighborhood-news)

*Continued on next page*

*Continued from previous page*

Examples of services provided by the program include:

- One-on-one, in-person career exploration and entrepreneurship navigation
- Connect to community and state-based employment and business resources
- Job training, job search, and job application resources
- Résumé and interview support
- Internship and apprenticeship resources
- Small business information and resources
- Business licensing and permitting

Mini City Hall has been serving customers for over two decades in the community, specializing in personalized customer services provided by friendly staff in multiple languages. Many local nonprofit organizations and programs also have office hours at MCH. Besides processing city water bill payments and selling pet licenses, Mini City Hall offers information and referrals for a long list of items, including Medicare, ESL classes, affordable housing and shelters, legal and financial services, family counseling, childcare, job search resources, senior services and resources for people with disabilities.



For more information about the new Employment and Entrepreneurship Navigation Program, please contact Workforce Development Specialist Pranaya Sathe at [psathe@bellevuewa.gov](mailto:psathe@bellevuewa.gov) or 425-452-6864, and Economic Development Analyst Ashis Joshi at [bizsupport@bellevuewa.gov](mailto:bizsupport@bellevuewa.gov) or 425-452-2931. Mini City Hall is open Monday to Saturday, 10 a.m.-6 p.m. Services are also available by phone at 425-452-2800 and by email at [minich@bellevuewa.gov](mailto:minich@bellevuewa.gov). Staff offers help in English, Spanish, Cantonese, Mandarin, Russian,

Somali, Hindi and Telugu. For more information, please visit [BellevueWA.gov/mini-city-hall](http://BellevueWA.gov/mini-city-hall).

## Neighborhood Block Party Virtual Information Meetings

June 6, 6:30-7 p.m.

June 9, Noon-12:30 p.m.

Email [NeighborhoodOutreach@bellevuewa.gov](mailto:NeighborhoodOutreach@bellevuewa.gov) for Zoom link

Would you like to get your neighbors together for a block party this summer? Neighborhood Outreach can help you with party ideas, banners, signs and flyers. Join us at one of the information meetings, and gain ideas and support for your event. Even if you've never planned a neighborhood event, we're here to help you plan a party and meet your neighbors!



## Neighborhood Enhancement Program

### Newport Projects Open House

June 15

Join city staff and your neighbors at a public open house

on Wednesday, June 15 at Newport Heights Elementary School, 5225 119th Ave SE, Bellevue, WA 98006, 6:30-8 p.m. The meeting will invite residents to review the **10 small capital projects** that will be included on your Neighborhood Enhancement Program ballot and eligible for funding from the \$282,000 Newport NEP budget allocation. A brief overview of the project scoping and NEP voting processes will also be provided. Let us know that you plan to attend by sending an RSVP to [NeighborhoodOutreach@bellevuewa.gov](mailto:NeighborhoodOutreach@bellevuewa.gov)





## NEP project scoping begins for Somerset neighborhood area

The project submission phase for the Somerset NEP closed on May 18. City staff are now in the scoping and review phase for over 130 project ideas that were submitted for your neighborhood area and will present projects eligible for funding from the \$217,000 Somerset NEP budget allocation at a Sept. 13 public open house at the South Bellevue Community Center.

The Neighborhood Enhancement Program is a city-funded program that allows residents to propose and select modest capital projects to enhance their neighborhoods. The program rotates through the city's 14 NEP neighborhood areas over the course of seven years, serving two areas each year. The \$5 million program allocation is distributed among each of the NEP neighborhood areas, according to the number of households in each area.

**Questions?** Contact Theresa Cuthill at [tcuthill@bellevuewa.gov](mailto:tcuthill@bellevuewa.gov). Detailed program information can be found at [BellevueWA.gov/nep](http://BellevueWA.gov/nep).

## Volunteer with Parks & Community Services!

Bellevue Parks & Community Services has resumed hosting volunteer projects at parks throughout the city. We're inviting individuals, students, families, faith organizations, clubs and businesses to join us and make a difference in your community! [BellevueWA.gov/volunteering/environmental-stewardship](http://BellevueWA.gov/volunteering/environmental-stewardship)



## “State of the City” event will feature Bellevue Mayor and Deputy Mayor

June 28, 7:30-9 a.m. at Bellevue Club

[BellevueDowntown.com](http://BellevueDowntown.com)

Bellevue Mayor Lynne Robinson and Deputy Mayor Jared Nieuwenhuis will deliver the annual State of the City address on June 28. Hear updates on the local economy, mobility projects, equity and inclusion work, and community safety. The event is hosted at Bellevue Club, 7:30-9 a.m., and is produced by the Bellevue Downtown Association in partnership with the City of Bellevue and mayoral leadership. A plated breakfast is included with registration. Learn more at [BellevueDowntown.com](http://BellevueDowntown.com).

## Lake to Lake Bike Ride

The ninth annual Lake to Lake Bike Ride on **Saturday, June 11** will provide riders of all levels and abilities an opportunity to experience Bellevue by bicycle on some of the city's beautiful trail systems. Riders can choose between three different routes: an approximately nine-mile Greenbelt Loop perfect for families and less-experienced cyclists, a more challenging 24-mile Lake to Lake loop with some climbs or a free Kids Ride in the park.

*Continued on next page*

Continued from previous page

To register, visit [BellevueWA.gov/bike-ride](https://BellevueWA.gov/bike-ride) and enter activity code 2202460 or call 425-452-6885. Space is limited, so pre-registration is recommended. Pending availability, on-site registration will take place 8-9 a.m. at the event. Registration for the Kids Ride is at parks. [bellevuewa.gov/ride](https://bellevuewa.gov/ride) with activity code 2202729.



Overlake Medical Center and Crossroads Bellevue are the title sponsors. REI is an event sponsor. Supporting sponsors include: Choose Your Way Bellevue, Gregg's Bellevue Cycle, QFC, Kate's Real Food and WheelLab.

For more information, call 425-452-4882, email [bikeride@bellevuewa.gov](mailto:bikeride@bellevuewa.gov) or visit [BellevueWA.gov/bike-ride](https://BellevueWA.gov/bike-ride).

## Join the Bellevue Essentials program in 2022!

Applications are now being accepted for the 10-week course that begins Sept. 28. Bellevue Essentials is designed for individuals interested in gaining skills and knowledge around how city government works and how to effectively be involved. A cohort of 35 participants will be selected who are demographically representative of Bellevue's



diverse community and are committed to the future of Bellevue and to serving their community.

Course participants will get the opportunity to work with city councilmembers, city staff and leadership as they learn about the past, present and future of Bellevue through presentations, interactive experiences and site tours. Participants must live or work in Bellevue and attend eight of ten sessions to graduate.



Neighborhood association board members are especially encouraged to apply.

**"The Bellevue Essentials experience goes beyond learning about how the city functions. I was immersed in the complexities of city government and can understand how successful cities manage complexities. The course is highly enjoyable and a spectacular educational experience. I have strongly recommended it to my neighbors. It will help you understand and better your community."**

**Randy Dearth, Class of 2019**

### You are invited to learn more about Bellevue Essentials at an Information Session!

Join course alumni and staff for an informative presentation and question and answer session

Thursday, June 9, 6-7 p.m., City Hall, 450 110th Ave NE, Room 1E-112

Tuesday, June 14, Noon-1 p.m., via Zoom

Thursday, June 16, 5-6 p.m., Crossroads Community Center, 16000 NE 10th St.

To reserve your space at an information meeting, email [jellenhorn@bellevuewa.gov](mailto:jellenhorn@bellevuewa.gov) or call 425-452-5372

A brochure with course dates, tuition and an easy application are available at [BellevueWA.gov/bellevue-essentials](https://BellevueWA.gov/bellevue-essentials).



## Summer roster of Greener Living classes

By Erin Hislop, Utilities Conservation and Outreach

Bellevue Utilities is pleased to offer free interactive classes on a variety of environmental conservation topics. Summer classes are offered either in-person at the Bellevue Botanical Garden Education Center or virtually via Zoom.

To learn more visit [BellevueWA.gov/greener-living-classes](https://BellevueWA.gov/greener-living-classes).

Registration is required for all classes. To register, email [recycle@bellevuewa.gov](mailto:recycle@bellevuewa.gov) or call Sam Wilder at 206-949-1787.

Classes include the following:

- **Curbside Composting and Beyond** Dig into how to identify compostable products and how to set up a composting service for your house, apartment, or condominium.
  - ◆ Friday, June 24, Noon-1 p.m., virtual class
- **Plastics: Problems and Possibilities Deepen** your knowledge about which plastics can be recycled and how you can help reduce global impact.
  - ◆ Wednesday, July 13, 7-8 p.m., virtual class
- **Reduce Wasted Food** Learn how to maximize your food use through proper storage, label reading and innovative recipes.
  - ◆ Wednesday, July 20, 7-8 p.m., virtual class
  - ◆ Monday, August 8, Noon-1 p.m., in-person class at Bellevue Botanical Garden
- **Safer Cleaning** Learn how to shop for safer cleaning products and how to make your own safer cleaners with common household items.
  - ◆ Thursday, June 23, 7-8 p.m., virtual class
  - ◆ Friday, July 15, Noon-1 p.m., in-person class at Bellevue Botanical Garden
  - ◆ Tuesday, August 9, 7-8 p.m., virtual class
- **Super Sorter** Learn where common items belong in recycle, compost or garbage. Find out how to handle unusual or hazardous items.
  - ◆ Wednesday, June 29, 7-8 p.m., virtual class
  - ◆ Friday, July 29, Noon-1 p.m., in-person class at Bellevue Botanical Garden

- ◆ Tuesday, August 16, 7-8 p.m., virtual class

- **Sustainable Shopping** Sharpen your skills for reducing consumption and making environmentally friendly choices while shopping.

- ◆ Monday, August 15, Noon-1 p.m., in-person class at Bellevue Botanical Garden

---

## Project CATCON ID program helps to reduce catalytic converter thefts

By Crime Prevention Officer Ruby Daly

Bellevue Police started the Project CATCON ID program to help reduce the number of catalytic converter thefts.

The department partners with local businesses, which etch the last seven numbers of your vehicle's identification number and spray paint a bright orange high temp paint onto the catalytic converter.

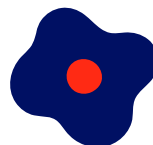
Police have conducted three Catalytic Converter Etching Events. The first one was a five-day partnership with Honda of Bellevue, and the other two events were Saturdays at Bellevue High School with the auto technology department.

The students received extra credit and community service hours for participating. Over 340 vehicles have been etched and painted, and we are continuing to search for additional business partnerships.

Check the website for future events: Project CATCON ID | City of Bellevue ([BellevueWA.gov](https://BellevueWA.gov))

If your business is interested in becoming a partner, please contact [CrimePrevention@bellevuewa.gov](mailto:CrimePrevention@bellevuewa.gov), or call 425-452-6915

---



## 29 New Artworks coming to the City of Bellevue!

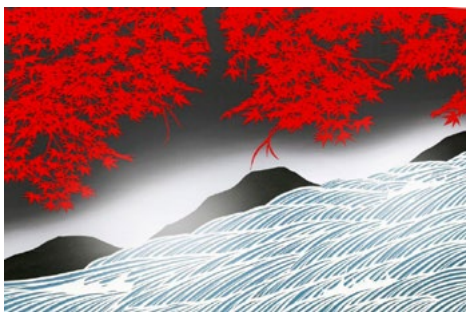
In May, the Bellevue Arts Commission approved the purchase of 29 artworks from 24 artists to be added to the city's Portable Works Collection. The works come from a diverse group of artists working and living within King, Kitsap, Snohomish and Pierce counties.

The call was open for two months in early 2022 and received 200 artist submissions with over 1,000 individual artworks reviewed by a panel of community members and arts professionals.

The collection of new artworks will be on display on the City Hall Lobby Mezzanine in summer 2022. Artwork currently on display in the mezzanine, purchased in 2020 for the Portable Works Collection, will be transitioned to displays throughout the city in accessible locations within neighborhood community centers and Mini City Hall at Crossroads Shopping Center. More information, including the complete list of purchased artwork, artist bios and statements, is at [BellevueWA.gov/arts](https://BellevueWA.gov/arts).



*"Resistors" by Chandra Wu, quilt*



*"Autumn Falls 8" by Akiko Sogabe, paper cutting*



*"Carnelian Crystal" by KT Hancock, blown glass and stainless steel*

## New bills enacted by the Washington State Legislature

The Bellevue Network on Aging would like to share with you information about several of the bills enacted this year by the Washington State Legislature that will affect seniors.



- SSB 5745 may allow more independence for some seniors. To continue living at home, older persons often need help with various activities such as preparing meals, housekeeping and personal care. If one qualifies financially, Medicaid can provide these services. However, Medicaid imposes a personal needs allowance (PNA), which limits the income a client can keep for personal needs and household expenses such as rent or mortgage, utilities, home maintenance, transportation and groceries. SSB 5745 raises the PNA and will enable many more seniors to receive Medicaid assistance at home.

The 2022 legislature also passed multiple health care bills.

- SB 5546, from January 1, 2023, through January 1, 2024, reduces the amount that health plans can require enrollees to pay for a 30-day supply of insulin from \$100 to \$35.
- HB 1616 increases access to affordable health care for over two million residents, by raising both the income threshold for patients to qualify for free hospital care and the threshold to receive a discount on hospital charges.
- SB 5532 establishes a five-member prescription drug affordability board, with the power to conduct up to 24 affordability reviews each year of prescription drugs priced above designated thresholds and the power, beginning January 2027, to set an upper payment limit for 12 prescription drugs per year.
- SB 1646 formally establishes the Dementia Action Collaborative (DAC) and delineates its

membership. In 2014, the legislature directed the Department of Social and Health Services to convene a working group to develop a state plan addressing Alzheimer's Disease and other dementias. The plan was released in 2016. Since the completion of the plan, the Dementia Action Collaborative, a group of public-private partners, many of whom helped create the Alzheimer's plan, have worked to implement the plan.

- SB 1646 also describes the duties of the DAC, which include review and revision of the prior Alzheimer's plan. The DAC website includes information on Alzheimer's and other dementias and is directed toward a variety of persons including medical professionals, caregivers, persons with dementia and others. <https://www.dshs.wa.gov/altsa/dementia-action-collaborative>

## WSDOT's Main Street bridge replacement work starts week of June 13

Delayed project requires closure of Main Street, weekend closure of I-405

After being rescheduled multiple times due to a lengthy concrete strike, the state Department of Transportation now plans to close Main Street, between 112th and 116th Avenue Northeast, starting the week of June 13, as it prepares to replace the Main Street bridge over Interstate 405. The new overpass will include a multipurpose path for people who walk and bicycle.

In addition to the five-month closure of Main, WSDOT will close I-405 in both directions through downtown to demolish the bridge. That closure is scheduled to begin at 11 p.m. Friday, June 17, and end at 4:30 a.m. Monday, June 20, depending on weather and other factors.

State and City officials understand the closures will have significant traffic impacts and encourage travelers to use alternate routes.

The overpass project is part of WSDOT's I-405 Renton-to-Bellevue Widening and Express Toll Lanes Project. The new bridge will span the new, wider I-405.

- The principal detour for Main Street will be on Northeast Fourth Street. Main Street across I-405 will remain closed for up to five months while crews build a new bridge. The closure of Main Street will then be followed by a 60-day period when one lane in each direction is open.
- The detour route for the I-405 closure will move traffic onto city streets between the highway ramps at Northeast Fourth and Southeast Eighth streets.



Continued on next page



*Continued from previous page*

- Additional I-405 weekend closures will be scheduled in the coming months to set girders for the new bridge, but those closures will be in one direction only.

More about the Main Street bridge replacement and all WSDOT closures on I-405 is at [WSDOT.wa.gov/I405Widening](https://www.wa.gov/I405Widening). Get the latest information on street closures citywide at [BellevueWA.gov/trafficadvisories](https://BellevueWA.gov/trafficadvisories).

---

## Neighborhood Greenway boosted bike traffic, lowered vehicle speeds

The city's first neighborhood bicycle greenway achieved most of the goals established for the demonstration project, including lower vehicle speeds and increased bike traffic. The findings are part of a recently released evaluation report that recommends making the route permanent and enhancing its design features.



Installed in August 2021, the two-mile long East Bellevue Demonstration Greenway is located primarily along 166th and 165th avenues, from Southeast 14th Street to Northup Way. It's intended to make it easier for people to bicycle and walk the neighborhood to reach nearby destinations.

Project improvements include bicycle pavement markings, rapid-build traffic circles with pavement artwork, relocated stop signs, wayfinding signs and new 20 mph speed limit signs (down from 25 mph).

The "demonstration" part means the city used quick-build, low-cost treatments, and residents were encouraged to provide feedback before, during and after installation. Based on

traffic analyses and a community survey, the evaluation showed several project goals were met. The Greenway:

- Increased the number of bicyclists and pedestrians along the corridor: pedestrian usage increased 16% and bicycle usage increased 160%.
- Lowered vehicle speeds: of all traffic measured at four locations along the Greenway, a lower share of traffic traveled above 25 mph following installation.
- Improved perceived safety along the Greenway route: of people who biked along the greenway, 68% agreed they felt safer; 21% did not feel safer.

The Greenway cost \$153,209 to build and was funded by the voter-approved Neighborhood Safety, Connectivity and Congestion Levy, and by the Neighborhood Traffic Safety program.

Based on the data and public feedback, the city will explore creating a new program to evaluate other possible locations for neighborhood greenways in Bellevue. More information and the evaluation report are available at [BellevueWA.gov/east-bellevue-greenway](https://BellevueWA.gov/east-bellevue-greenway).

---

## West Lake Sammamish Pkwy., other transportation projects resume

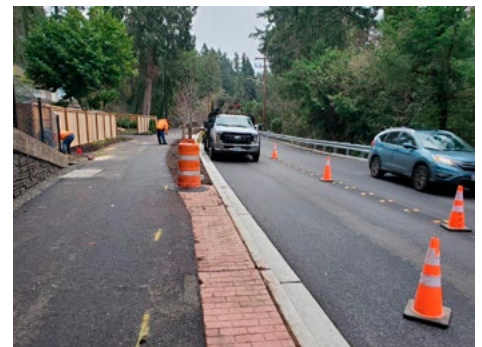
With the concrete strike over, work on several roadway projects in Bellevue, including

West Lake Sammamish Parkway, is resuming.

Construction

on the Parkway will require two weekend full closures starting in June – in the Northup Way and NE 2<sup>nd</sup> Place areas – with detours for traffic around the closure areas. The closures are needed to finish the pedestrian and bicycle improvements.

Details about the detour routes are available at [BellevueWA.gov/trafficadvisories](https://BellevueWA.gov/trafficadvisories).





Final paving south of Southeast 1<sup>st</sup> Street could occur as early as mid-June; it's anticipated the full project will be substantially completed by the end of July. The project is the second of five West Lake Sammamish Parkway segments planned for upgrades as funding becomes available.

Thank you for driving safely and obeying detour signs and flaggers. We appreciate your patience during the unforeseen delays the city and its contractors have encountered.

Several other projects affected by the concrete strike also are starting. Concrete is used for curbs, sidewalks, wheelchair ramps and some traffic islands; almost all Bellevue streets are paved with asphalt.

- Southeast 46th Way Curb Ramp Improvements: Construction was expected to start in late May and extend into August to make improvements along Southeast 46th Way, between 150th Place Southeast and 164th Ave. Southeast. A total of 44 new sidewalk ramps are being installed at 12 intersections. Flaggers will direct people who drive, walk and bicycle around the work zones.
  - Eastgate ADA Curb Ramp Replacements: Work was scheduled to resume in late May on a project that began in 2021 to replace 40 curb ramps, upgrading them to meet Americans with Disabilities Act requirements. Intersection locations include 167th Avenue Southeast and Southeast 46th Street, 150th Avenue Southeast at Southeast 43rd Street and Southeast 54th Place, Southeast 45th Court at 162nd Way Southeast, and multiple intersections on Southeast Allen Road. Expect intermittent lane closures and delays. Weather permitting, the grinding, repaving and restriping work is expected to wrap up in June.
  - Crosswalk Improvement Project on Kamber Road SE: Work began in early May to install flashing beacons, signs, pedestrian refuge islands, new curb ramps and other improvements at two locations on 140th Place SE (Kamber Road), at Southeast 24th Street and at Southeast 20th Street. Expect intermittent lane closures. Project completion is expected in late August.
- 

## Resources for the community

**Compiled by City of Bellevue Human Services and Neighborhood Services.**

This guide is provided as a complementary hard-copy resource, serving anyone who may prefer or need to receive printed information rather than information online. The City of Bellevue also posts the latest information on several financial assistance programs and community resources to assist residents through pandemic recovery at [BellevueWA.gov/COVID-19-community-resources](https://BellevueWA.gov/COVID-19-community-resources).

**Call 2-1-1 to find assistance for most basic needs**

### Domestic Violence & Sexual Assault Support

- Consejo Counseling & Referral Service 24/7 hotline: 1-888-847-7205
- LifeWire 24-Hour Helpline: 425-746-1940 or 800-827-8840
- King County Sexual Assault and Resource Center Resource Line: 1-888-99-VOICE (1-888-998-6423)

### Emergency Financial Assistance

- 4 Tomorrow: 425-891-0346\*
- Attain Housing (Families with children): 425-576-9531
- Catholic Community Services: 425-213-1963 (Do not leave a voicemail; call back to speak to a staff member) \*
- Centro Cultural Mexicano: 425-896-7067 \*
- Hopelink: 425-943-7555\*
- Indian American Community Center: 253-234-9989, Extension 5
- Bellevue LifeSpring (Bellevue School District Families with Children): 425-451-1175, Extension 5
- LifeWire (domestic violence survivors): 425-749-8369 or 425-746-1940
- Salvation Army: 425-452-7300 \*
- Solid Ground (available through 2-1-1): 206-694-6780 or 2-1-1
- YMCA Social Impact Center: 253-656-3551 \*

Struggling to pay your mortgage? Free housing counseling and civil legal aid is available now to income-qualified homeowners facing foreclosure by the Washington Homeownership Resource Center. For information, visit [homeownership-wa.org](http://homeownership-wa.org)

\*These rental and mortgage assistance programs are supported, in whole or in part, by federal award number SLFRP4086 awarded to City of Bellevue, Washington by the U.S. Department of Treasury.

## Food

- Hopelink Market will open enrollment on May 2: 425-943-7555
- Renewal Food: 425-736-8132
- Salvation Army free take-out dinner Mon.-Fri. 5:30-7 p.m.: 425-452-7300
- Sound Generations-Meals on Wheels: 206-448-5767

## Legal Assistance

- Catholic Community Services (Tenant Legal Assistance Center): 206-324-6890
- Eastside Legal Assistance Program: 425-747-7274
- King County Bar Association: 206-267-7090
- Tenant Services Hotline: 206-723-0500 or 206-694-6767

## Healthcare Needs

### Medical and Dental Care

- Eastgate Public Health Center: 206-477-8000
- International Community Health Services: 425-373-3030
- HealthPoint, Medical: 425-882-1697; Dental: 425-883-8000
- Sea Mar Bellevue Medical Health Clinic: 425-460-7140

### Behavioral Health Hotlines

- Crisis Connections 24-Hour Emotional Crisis Line: 866-427-4747
- The Washington Recovery 24-Hour Helpline, call or text: 1-866-789-1511
- Teen Link Evening Helpline, call or text: 866-833-6546

## Clinical Services

- Asian Counseling and Referral Services: 206-695-7511
- HealthPoint: 425-882-1697
- International Community Health Services: 425-373-3030
- IKRON of Greater Seattle: 425-439-9101
- Sea Mar Medication Assisted Treatment (MAT): 425-460-7140
- Therapeutic Health Services: 425-747-7892
- Youth Eastside Services (YES): 425-747-4937
- Support, Education and Advocacy Services
- NAMI (National Alliance on Mental Illness) Eastside: 425-885-6264

## Utilities

- Hopelink, energy and water assistance: 425-658-2592
- **City of Bellevue Utility & Tax Relief Programs: 425-452-5285**

### Utility bill assistance programs

Bellevue Utilities has several programs to help qualifying low-income residents and residents facing financial hardship. For more information on who qualifies and how to apply for these programs, please see [BellevueWA.gov/utility-relief](http://BellevueWA.gov/utility-relief) contact us at 425-452-5285 or [utilityrelief@bellevuewa.gov](mailto:utilityrelief@bellevuewa.gov)

### Emergency Assistance Program

If you pay a Bellevue utility bill directly and are not eligible for the Utility Rate Discount Program, you may qualify for a 100 percent discount on a basic level of service for up to 2 bills (4 months) of utility service charges\*\* if you are experiencing a one-time financial shock that interferes with your household's ability to cover basic needs. There are no age or disability requirements. Certain residency and income requirements must be met. This assistance is available to customer once every 3 years. Please call 425-452-5285 to request an application.

\*\*Some charges, such as capital recovery charges (CRC) cannot be waived. For information about CRC fees, visit [BellevueWA.gov/utility-relief](http://BellevueWA.gov/utility-relief).



## Utility Rate Relief

The City of Bellevue offers low-income seniors (62 and older) and low-income persons with permanent disabilities a discount on their basic utility costs for water, wastewater and drainage. Customers must meet specific residency and income guidelines. Customers who are receiving home kidney dialysis treatments may qualify for a discount on the water and wastewater required to provide those medical treatments without an income requirement.

### Utility Rate Discount

If you pay a Bellevue utility bill, you may qualify for a rate reduction on your utility bills. This program is typically open February-October of each year.\*\*\*

### Utility Rate Rebate

If your utility costs have been paid through rent or other third party, you may qualify for a rebate check on utility costs. This program is typically open April-October of each year.\*\*\*

### Utility Tax Relief

This program provides utility occupation tax relief to low-income households within the Bellevue service area in the form of a rebate check from utility occupation taxes paid to the city. The program is typically open October 1-November 15 of each year.\* Checks are issued in December of the year in which households apply and are approved for the program.

\*\*\* Please check the program website for exact start and end dates for each program.

## Rental or mortgage assistance

Bellevue City Council authorized \$7 million of Bellevue's federal American Rescue Plan Act (ARPA) funding to support the Residential Rental and Mortgage Relief program. The organizations below are contracted by the City to provide rental, mortgage and move-in assistance to low- and moderate-income Bellevue residents impacted by the pandemic. Please visit the city's rental and mortgage assistance page at: [tinyurl.com/2p8rnu47](https://tinyurl.com/2p8rnu47), and contact the providers directly.

## City of Bellevue Home Repair Program

The Home Repair Program provides 0% interest deferred loans for up to \$35,000 the first year and up to \$50,000.00 total per household for eligible major home repairs to low- and moderate-income Bellevue homeowners.

Loans only need to be paid back when the home is sold or the title is transferred.

The program is intended to help low- and moderate-income homeowners maintain and preserve their homes by providing access to deferred loans and grants to increase health and safety and improve the integrity of the home. Examples of eligible repairs: roof and gutter replacement, siding and exterior painting, electrical and plumbing repairs, heating systems, windows and insulation and more.

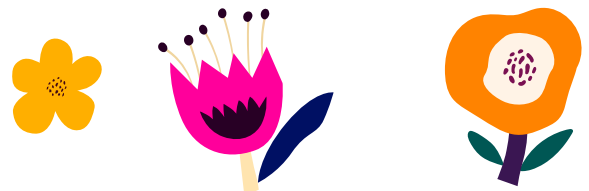
Bellevue residents interested in applying for the Home Repair Program can contact Donna Adair at (425) 452-4069 or [dadair@bellevuewa.gov](mailto:dadair@bellevuewa.gov) for questions and to request an application or visit our website at Home Repair Assistance | City of Bellevue ([bellevuewa.gov](https://bellevuewa.gov))

### Residents can receive home repair help through "Day of Sharing and Caring"

*Requests for outdoor home projects are due by July 1*

Residents needing assistance with outside home maintenance can apply for help from a team of volunteers who will complete one-day improvement projects through the Day of Sharing and Caring program. Past projects of all sizes have included yard clean-up, power washing, fence/gate/shed repair and painting, green debris and junk hauling, wood-round removal and bark spreading.

Residents can request more information, learn of additional resources and begin the application process by contacting Carol Ross at [cross@bellevuewa.gov](mailto:cross@bellevuewa.gov) or 425-452-7917.



Bellevue residents and visitors enjoyed a combination of skill-building classes, walking tours, bus tours and opportunities to visit in-person at the Experience Bellevue! event on May 14.





## Boards and Commissions Meetings

Stay updated on meetings and cancellations:  
[BellevueWA.gov](http://BellevueWA.gov)

All meetings are conducted at City Hall unless otherwise noted. Agendas are subject to change. If a holiday occurs on a Monday, please check the updated calendar. Agendas can be downloaded from the city's web pages listed below. Meeting alerts are available through subscribing to the City's Special Meeting Notices page. [BellevueWA.gov/city-government/departments/city-clerks-office/special-meeting-notice](http://BellevueWA.gov/city-government/departments/city-clerks-office/special-meeting-notice)

### Bellevue Diversity Advisory Network

(6 p.m., Bellevue City Hall) Last Tuesday of each month  
[BellevueWA.gov/city-government/departments/city-managers-office/diversity/bellevue-diversity-advisory-network](http://BellevueWA.gov/city-government/departments/city-managers-office/diversity/bellevue-diversity-advisory-network)

**East Bellevue Community Council** (6:30 p.m., Lake Hills Clubhouse, 15230 Lake Hills Blvd) First Tuesday of each month  
[BellevueWA.gov/city-government/east-bellevue-community-council](http://BellevueWA.gov/city-government/east-bellevue-community-council)

**Arts Commission** (4:30 p.m., 1E-109)  
First Tuesday of each month  
[BellevueWA.gov/city-government/departments/community-development/arts-and-culture/arts-commission](http://BellevueWA.gov/city-government/departments/community-development/arts-and-culture/arts-commission)

**Environmental Services Commission**  
(6:30 p.m., 1E-113) First Thursday of each month  
[BellevueWA.gov/city-government/departments/utilities/conservation-and-the-environment/environmental-services-commission](http://BellevueWA.gov/city-government/departments/utilities/conservation-and-the-environment/environmental-services-commission)

**Planning Commission** (6:30 p.m., 1E-113) Second and fourth Wednesday of each month  
[BellevueWA.gov/city-government/departments/community-development/planning-commission](http://BellevueWA.gov/city-government/departments/community-development/planning-commission)

**Transportation Commission**  
(6:30 p.m., 1E-113) Second Thursday of each month with fourth Thursday as needed.  
[BellevueWA.gov/planning/transportation-commission](http://BellevueWA.gov/planning/transportation-commission)

**Human Services Commission** (6 p.m., 1E-113)  
First and third Tuesday of each month  
[BellevueWA.gov/city-government/departments/city-clerks-office/boards-and-commissions/human-services-commission](http://BellevueWA.gov/city-government/departments/city-clerks-office/boards-and-commissions/human-services-commission)

**LEOFF 1 Disability Board** (6 p.m., Room 1E-118)  
First Tuesday of each month  
[BellevueWA.gov/city-government/departments/human-resources/retirees-former-employees/leoff-1-disability-board](http://BellevueWA.gov/city-government/departments/human-resources/retirees-former-employees/leoff-1-disability-board)

**Library Board** (5p.m., Lake Hills, Bellevue or Newport Way Library) Third Tuesday of each month  
[BellevueWA.gov/city-government/departments/city-clerks-office/boards-and-commissions/library-board](http://BellevueWA.gov/city-government/departments/city-clerks-office/boards-and-commissions/library-board)

**Parks & Community Services Board**  
(6 p.m., 1E-113) Second Tuesday of each month  
[BellevueWA.gov/city-government/departments/city-clerks-office/boards-and-commissions/parks-and-community-services-board](http://BellevueWA.gov/city-government/departments/city-clerks-office/boards-and-commissions/parks-and-community-services-board)

**The Bellevue Network on Aging (BNOA)** 8:30 a.m., North Bellevue Community Center  
4063 148th Ave NE, Bellevue) First Thursday of each month  
[BellevueWA.gov/bnoa](http://BellevueWA.gov/bnoa)

**Special Events Committee** (8:30 a.m., 1E-112)  
Second Thursday of each month  
[BellevueWA.gov/city-government/departments/city-clerks-office/boards-and-commissions/special-events-committee](http://BellevueWA.gov/city-government/departments/city-clerks-office/boards-and-commissions/special-events-committee)

**Youth Link Board** (6 p.m., 1E-120)  
Second Wednesday of each month  
[BellevueWA.gov/city-government/departments/city-clerks-office/boards-and-commissions/youth-link-board](http://BellevueWA.gov/city-government/departments/city-clerks-office/boards-and-commissions/youth-link-board)

Bellevue's Neighborhood Services Division offers a variety of programs and partnerships for neighborhood leaders and active residents. To learn more about citizen involvement opportunities and programs to enhance neighborhoods, please visit our website at: [BellevueWA.gov/city-government/departments/community-development/neighborhoods](http://BellevueWA.gov/city-government/departments/community-development/neighborhoods) or call 425-452-6836 or email: [neighborhoodoutreach@bellevuewa.gov](mailto:neighborhoodoutreach@bellevuewa.gov).

To subscribe to this newsletter, visit:  
[BellevueWA.gov/neighborhood-news](http://BellevueWA.gov/neighborhood-news)

**City Council** [Bellevue.Legistar.com/Calendar.aspx](http://Bellevue.Legistar.com/Calendar.aspx)

Day	Scheduled Meeting(s)	Location	Public Comment Opportunity
First four Mondays of each Month, except August and December	6 p.m. Regular Meeting	Virtual Bellevue TV channel 21 and BTV YouTube channel <a href="http://youtube.com/user/BellevueWashington">youtube.com/user/BellevueWashington</a>	Emails to Council are accepted at <a href="mailto:council@bellevuewa.gov">council@bellevuewa.gov</a> at any time. Further opportunities for public comment are published on each Council agenda and can be found at <a href="http://bellevue.legistar.com/Calendar.aspx">bellevue.legistar.com/Calendar.aspx</a>
August – first Monday only			
December – first and second Mondays only			

