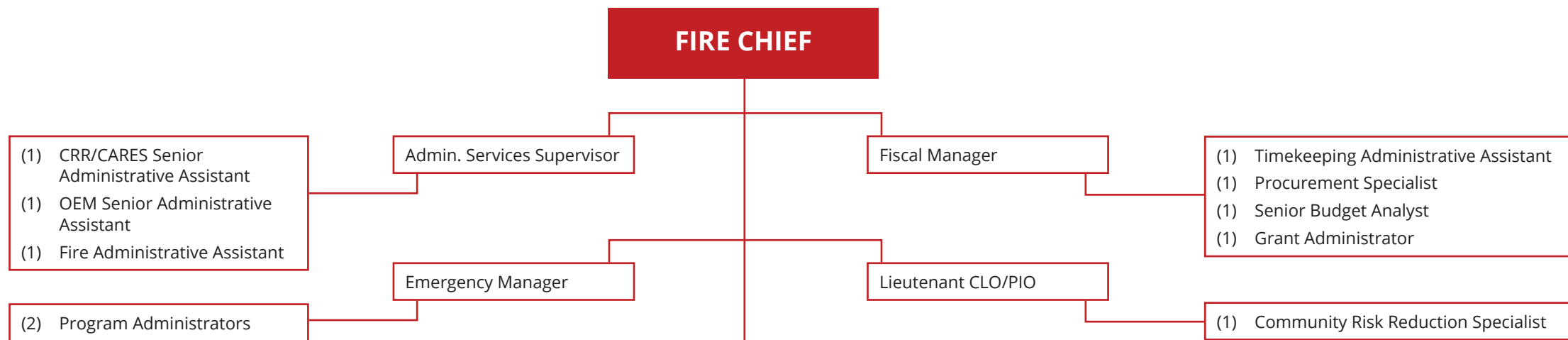


# BELLEVUE FIRE ORGANIZATIONAL CHART

**FIRE CHIEF**



## 2022 PERSONNEL

**268** EMPLOYEES  
**9** CHIEF OFFICERS  
**179** FIREFIGHTER-EMTs  
**34** FIREFIGHTER-PARAMEDICS  
**46** CIVILIAN EMPLOYEES

**DEPUTY CHIEF**  
Bureau of Operations

**DEPUTY CHIEF**  
Bureau of Support Services

