

BELLEVUE ARTS COMMISSION



The Root detail by Dan Corson



Community Development

January 11, 2022
ZOOM MEETING

“The arts are an important expression of how people think of and experience the city and each other. Bellevue seeks to foster a strong arts and cultural community chiefly supported through a wide range of artists, art and cultural institutions, and arts groups offering a variety experiences to an engaged audience.”

-City of Bellevue, Comprehensive Plan, Urban Design & the Arts Element



Community Development

Agenda

Agenda

Tuesday, January 11 2022

Bellevue Arts Commission

Zoom Meeting: 4:30 p.m.

Commission Staff Contact: 425.452.4064

The City of Bellevue Arts Commission meeting for January 11 will be conducted virtually via Zoom Webinar. The public can access the meeting here, <https://cityofbellevue.zoom.us/j/96646676486> using Password: 451735 or by connecting to the Zoom Webinar using Webinar ID: 966 4667 6486 and Password: 451735. For those members of the public unable to access internet services, a telephone option will be made available to listen to the proceedings. The phone number to access the meeting is PHONE #+1 253 215 8782, Webinar ID: 966 4667 6486 and Password: 451735.

1. **CALL TO ORDER** 4:30
Chair will call the meeting to order.
2. **APPROVAL OF AGENDA AND MINUTES** 4:30 – 4:35
 - A. Chair will ask for approval of the agenda.
 - B. Chair will ask for approval of the December regular meeting minutes.
3. **ORAL COMMUNICATIONS** 4:35 – 4:45
There will be no opportunity for oral communications at this meeting. All written comments received prior to 3 p.m. on January 11 will be read or summarized into the record at the meeting. If you wish to provide written comment to the Arts Commission, please email mstamm@bellevuewa.gov with the subject line “Written Communications – January 11”.
4. **ACTION, DISCUSSION, AND INFORMATION ITEMS**
 - A. 121st Scramble Artwork Concert Design Update 4:45 – 5:15
 - B. 2022 Work Planning 5:15 – 5:45
 - C. Portable Artworks Call 5:45 – 6:00
 - D. BelRed Mural Program 6:00 – 6:20
5. **COMMISSION QUICK BUSINESS** 6:20 – 6:25
6. **REPORTS** 6:25 – 6:30
 - A. Commissioners’ Committee and Lead Reports
 - B. Project Updates from Staff
8. **ADJOURNMENT** 6:30 pm
Chair will adjourn the meeting.

Bellevue Arts Commission meetings are wheelchair accessible. Captioning, American Sign Language (ASL), or language interpreters are available upon request. Please phone at least 48 hours in advance 425-452-6168 (VOICE) for ADA accommodations. If you are hearing impaired, please dial 711 (TR). Please contact the Arts Program at least two days in advance at mstamm@bellevuewa.gov or call 425-452-4064 if you have questions about accommodations.

ARTS COMMISSION MEMBERS

Maria Lau Hui, Chair

Ashmita Gulati, Vice Chair

Carl Wolfteich

Lydia Aldredge

Judy Gowdy

Monik Martinez

Bhavna Bhargava

COUNCIL LIAISON

John Stokes

STAFF CONTACTS

Lorie Hoffman, Arts Community Manager, 425-452-4246

Manette Stamm, Arts Program Analyst, 425-452-4064



Community Development

Minutes

BELLEVUE ARTS COMMISSION
REGULAR MEETING
MINUTES

December 7, 2021
4:30 p.m.

Bellevue City Hall
Virtual Meeting

COMMISSIONERS PRESENT: Chairperson Lau Hui, Commissioners Aldredge, Bhargava, Gowdy, Gulati, Wolfteich

COMMISSIONERS ABSENT: Commissioner Martinez

STAFF PRESENT: Manette Stamm, Lorie Hoffman, Department of Planning and Community Development

OTHERS PRESENT: Councilmember Stokes; Scott MacDonald, Ambergris Project

RECORDING SECRETARY: Gerry Lindsay

I. CALL TO ORDER

The meeting was called to order at 4:32 p.m. by Chair Lau Hui who presided. All Commissioners were present with the exception of Commissioner Martinez.

2. APPROVAL OF AGENDA AND MINUTES

A. Approval of Agenda

Motion to approve the agenda was made by Commissioner Aldredge. The motion was seconded was by Commissioner Gowdy and the motion carried unanimously.

B. Approval of Minutes

Motion to approve the November 2, 2021, minutes as submitted was made by Commissioner Aldredge. The motion was seconded was by Commissioner Bhargava and the motion carried unanimously.

3. ORAL COMMUNICATIONS – None

4. ACTION ITEMS AND DISCUSSION ITEMS

A. BelRed Arts District

Arts consultant Scott MacDonald said historically the arts have largely focused on intangible measures and community benefits, things like representation, livability and storytelling. The arts also supplement education. There has been a push lately to turn STEM into STEAM, but when comparing the two, in most instances the A, art, is left out, primarily because for those in charge it is difficult to quantify what the arts add to the equation. Private arts education, to a large extent fills out what the public education fails to provide. There are many ranging from kids to seniors who are highly engaged in arts education, and many of them utilize BelRed for that specific purpose. Also among the intangible elements are exposure to cultural traditions, art for the sake of art, and healthcare. With regard to the latter, there is a lot of arts practice

incorporated into therapy and rehabilitation. While important and comprising the personal for why one likes living in a particular place, the intangible elements are hard to use to tell the story.

Mr. MacDonald said the tangible representations of the benefits of the arts comes down to economic development. There is a wide push within the arts world to talk about the impacts of the arts in terms of economic development, all while not forgetting about the more intangible benefits. The economic development category includes the arts economy, or the dollars and cents raised; tourism; revitalization; and workforce attraction and retention. Nationwide, the arts share of the Gross National Product is almost seven times that of all farming activities. There are things called Creative Vitality Indices, which are tools used by arts organizations to quantify the more intangible elements, but they vary widely from tool to tool and the benefits are difficult to explain to the community and to leadership.

The economic and personal benefits of the arts are not separate. The tangible feeds into the intangible and vice versa. The full scope of the community benefit flows from that relationships. The BelRed arts district implementation plan should seek to maximize the community benefit, not just economic development or the role of the arts in any specific area. The aim should be to achieve critical mass creative growth, a force moving on its own that does not need constant city engagement and is not reliant on a specific player.

Mr. MacDonald said what makes something an arts district is a very interesting question. Arts districts are essentially planning mechanisms. A creative community or cluster, is just a high concentration of artists and other creatives within a given space. BelRed currently has a creative cluster, though it is dispersed. It is comprised of musicians, teachers, dancers, educators, writers, painters and sculptures. The idea is to have the BelRed arts district be recognized as a specific contingency that is focused on arts and culture. The idea is also to convey a formal benefit through the arts district designation and all associated supportive measures.

Three arts district examples were shared with the Commission: Valley Arts District in Providence, Rhode Island; Wynwood Arts District, Miami, Florida; and Western Gateway District, Des Moines, Iowa. Mr. MacDonald said Rhode Island has a statewide program that allows for the formation of arts districts within which work created or sold is exempt from paying sales or income tax. The Wynwood district came about when business and property owners came together to create a business improvement district, which is a self-taxed district. The taxes generated go toward the development of the area as an arts district. The smallest of the three is the Western Gateway at only 13 acres overall, including a 4.5-acre sculpture park. Its focus is on arts education.

BelRed is a 900-acre area sandwiched between the Downtown and Overlake and is home to Amazon, Microsoft and other large and small companies. It is situated in a unique confluence of a lot of different pressures, including the development happening in Overlake and the Downtown. There is no room to grow either north or south. The 2009 upzone brought with it a lot of pressure to densify and redevelop. The thinking is that an arts district would not take up the entire BelRed area, rather it would more focused on the core of where the arts organizations and businesses are located.

The history of the BelRed area is important when it comes to creating an implementation plan that is about transforming a place. The history of the area has involved a long line of transformations that have sometimes erased people and cultures, and more recently the light industrial uses. The area is part of the ancestral home of the Snoqualmie and Duwamish, and more broadly the Coast Salish people. Prior to non-native settlement, BelRed had numerous wetlands and old growth forest. In the early 1800s it was almost completely logged of its old

growth timber, leaving behind a field of stumps which remained until the early 1900s when most Japanese American farmers removed the stumps and created farmland. In WWII the Japanese American people were pulled from their homes and incarcerated, and because most of them leased their properties, the landowners considered the leases to be broken. Of the 60 Japanese American families in the areas that are now the Downtown, Wilburton and BelRed, only two came back after the war.

Going forward, the implementation plan will provide the opportunities to think about how to transform the area in a positive, non-erasure and inclusive way. In 2009 there was a arts village designated in the BelRed subarea plan, roughly where the original Francia Russell Center was off of 136th Avenue NE. Passage of the Economic Development Plan in 2020 specifically called out the BelRed arts district. The intent of the Council was to push forward the creative economy and to help support tourism. The plan specifically calls out helping to develop and establish the district with institutional and built infrastructure. It also calls for removing barriers in the Land Use Code. There is a long list of manufacturing uses that are no longer allowed in most zones in BelRed, but art as a manufacturing use is not defined in the LUC, so should a company or collective come to the city seeking to be allowed to have ceramics studio that includes a retail space, the outcome would be left to the person reviewing the permit. The communities that are intentional about supporting arts districts are very intentional about defining art as a manufacturing use and allowing the use everywhere within the district.

Also in 2020, the city contracted with consultant Katie Miller to produce the Arts District Engagement Report. The report included research about arts districts and a lot of outreach work. A survey of over 200 people connected to BelRed in some way, in addition to more than 60 personal interviews with stakeholders from executive directors for arts organizations to independent businesses, major developers and multinational companies. Some of the issues identified included confusion about the role of the city; a desire to see the city step up; a desire to see some sort of management infrastructure of the district along the lines of a business improvement district; affordability in BelRed; and how to develop support, be it financial or social, for the district.

Mr. MacDonald explained that what previously was called the Framework Plan has now been termed the Implementation Plan. The scope involves looking at Land Use Code precedents from across the country; specific policy precedents from other cities, states and counties; and programming different district models. The draft is focused on implementation and currently includes four specific areas: management, visibility of the district, creative space and connection. In terms of management, the focus is on a coordinating community organization and attaining a Creative District designation from the state. On the financial side, the draft considers having conversations about how to create a sustainable level of support. Visibility is a huge issue for the district. While there is a large concentration of arts and culture uses in BelRed, much of it exists in the back of warehouses or buildings away from the street, putting the onus of creating awareness on the branding and identity work. One technical centers on where the district boundaries should be drawn. There are also physical improvements that could be made in furtherance of the creation of the district.

With regard to creating a creative space, Mr. MacDonald said the list of actions to remove barriers could be as simple as determining permitted levels of sound, when an event or business would need to obtain a permit, and defining allowable uses. Measures will need to be developed that will protect existing spaces and create new spaces, such as through incentives for new development and public/private partnerships. The creative space issue should not leave out public spaces, including streetscapes and parks facilities. The city has far more acreage dedicated to streets than it does to parks, thus the role the streets should play as public space in BelRed is important to consider. Pedestrian streets that serve as linear parks, outdoor

galleries or event spaces could be developed within the street network. Additionally, supportive spaces such as small retail, bars and restaurants are very important to the success of arts districts.

Mr. MacDonald said his research of arts districts nationally turned up the fact that most of them have a defining center dedicated to the district where people can come together. Such centers are great places for crosspollination. More broadly, filling the district must be considered in terms of art walks and open studios, music and cultural events, and farmers and artist markets.

Mr. MacDonald said he would utilize the Commission's feedback in completing the draft plan which will then be shared with staff and the BelRed Arts District subcommittee of the Arts Commission. Once a completed plan is in hand, it will be brought back to the Commission.

Commissioner Gulati voiced support for the idea of a tax-free zone. She noted that Vancouver's Granville Island is a good example of an arts district. In Bellevue there are sculptures that are coming down as development and redevelopment takes place and she said the city should consider having a sculpture park where the works could be relocated. She said affordability is certainly an issue and commented that unless the city specifically allots spaces for artists, property owners are unlikely to charge affordable rents. Mr. MacDonald said there are two things happening in BelRed. First is the general pressure of price increases and property values across the whole district. Second is the identification in the 2009 BelRed subarea plan of what was called nodal development. Within the nodes there are tremendous density increases that are triggering the redevelopment of sites. The Spring District node is a good example. The nodes are primarily concentrated around the light rail stations. The arts organizations where artists are working are primarily located in the periphery areas. The best way to create new spaces is through incentivized development. Protecting existing spaces is of great importance, but incentivizing new spaces is equally important. A number of ideas are being kicked around but nothing is settled yet.

Commissioner Gulati stressed the importance of having all arts and culture uses concentrated into a single area. Development incentives, while effective, too often result in spaces that are scattered and widely separated.

Chair Lau Hui agreed. She concurred that most arts district have a defined center from which everything radiates out. That element is missing from the BelRed arts district. The city may have a parcel that could be made into a center in collaboration with a developer. It would be good to hold the city accountable for accomplishing certain tasks within certain timelines. Mr. MacDonald said the bulk of the plan will be focused on a three- to five-year time period, though it will also include some more aspirational elements. The desire is to develop a plan that can hit the ground running, thus demonstrating the city's commitment.

Commissioner Aldredge suggested that there are some economic opportunities the city could take advantage of in association with some of the changes being seen, much of which is pandemic driven. Retail continues to struggle and no one can say for sure where it will end up. Both Seattle and Tacoma have engaged in storefront programs where retail spaces are given over to artists to work in for six month periods. The programs have done a lot to activate spaces that otherwise have been empty. She said she saw nothing in the plan about artist housing, an important element in allowing artists to live closer to and work in the district. Mr. MacDonald agreed that housing is important both for artists and in terms of how to grow the district. In the engagement report, affordable space was a primary topic, but affordable housing was given much less emphasis, in part because many of the artists who are able to live in Bellevue are able to work out of their homes. Commissioner Aldredge added that if

long-term goal is for Bellevue to become a draw for artists from other places, affordable housing needs to be included.

Commissioner Gowdy noted that there are several affordable housing projects under way in the city and she asked if any of those units are specifically targeted to artists. Mr. MacDonald said the negotiations regarding the affordable housing projects on the Sound Transit began some six years ago at a time when there was no data to make the case regarding artist housing. Commissioner Gowdy noted that Imagine Housing owns a property on 132nd Avenue NE. Development of the site is in the planning stage and it would be a good place to consider artist housing units.

Mr. MacDonald concurred with the suggestion to see art made or showcased in empty storefronts. Chair Lau Hui said Pacific Center in Seattle saw a lot of retail uses leave because of the pandemic. A recently article in the *Seattle Times* outlined how Pacific Center has made space available for marketing locally made art and craft products.

Commissioner Bhargava asked if the city is thinking about how it can leverage its arts and culture community as a tourism draw, and how local businesses can market themselves to draw in more people, adding to the tourism economy. Additionally, consideration should be given to creating spaces for use by traditional artists as well as digital artists. Mr. MacDonald agreed there should be a focus on how the traditional and digital art forms can work together and on offering the full gamut of experiences. The BelRed Art District's niche within the regional tourism draw should be considered along with what the character of the area is when thinking about building awareness of the district.

Arts Program Assistant Annette Stamm clarified that the BelRed Arts District subcommittee members are Commissioner Gulati, Commissioner Wolfteich and Chair Lau Hui.

Commissioner Gulati asked what is to be done with the sculptures being removed to make way for redevelopment activities. Arts Community Manager Lorie Hoffman said the city is working with the property owners in regard to Bellgate on 106th Avenue NE. It is likely the work will simply be relocated within the same property.

B. 2021 Year in Review

Ms. Stamm reminded the Commissioners that the 2021 arts grants totaled \$145,000. The number of requests submitted was the highest ever at 46 totaling \$255,711. There were 12 new organizations and artists making application. No consultant was tapped to help manage the applications and market the program.

The year saw a lot of activity in the public art realm. The Council approved the contract for the Downtown Park Northeast Corner artwork by Marc Fornes. Installation of the work is anticipated for 2022. The 130th streetscape artwork by Po Shu Wang was approved for final design and work to develop a contract for fabrication and installation is under way. The BelRed streetscape artwork concepts by Jill Anholt continue to move forward for the site at 121st Avenue NE and Spring Boulevard. The artist is working with members of the Snoqualmie tribe and the Japanese American community to refine the concepts. The portable art collection was installed at City Hall while waiting to find more permanent homes. A contract was signed with ArtTech for restore some critical public artworks and to clean some others. The work is expected to continue in 2022. Finally, the utility box wrap program was launched with eight locations in BelRed.

With regard to Bellwether, Ms. Stamm said the event supported more than 65 artists and creatives. More than 2,000 people visited the Bellevue Arts Museum to see the installations

there, and over a hundred people showed up for events that included a panel discussion, workshops, live music and performance art. A total of 34 artworks were installed throughout the city, and the first Bellwether film festival was conducted online along with a panel discussion.

The artist roster continues to grow. Near the end of 2020, there were 30 artists on the roster, and currently there are 110. The roster has proved to be a good resource for Bellevue as well as for other cities. The Eastside Arts and Culture Coalition, started during the pandemic, has become the Eastside Culture Coalition. The organization has meetings every other week and continues to grow. King County Councilmember Claudia Balducci authorized a grant to continue the work of the organization.

There was some turnover relative to the Commission and staff during 2021. Chair Malkin left the Commission, but Commissioner Bhargava joined. Scott MacDonald chose to leave his employment with the city as Arts Community Manager, but Lorie Hoffman was tapped to take his place.

Ms. Stamm said in early January the Commission will be given an update on everything planned for 2022. The Commissioners will at that time be asked to offer their comments and suggestions.

Chair Lau Hui thanked Ms. Stamm for her amazing work on behalf of the Commission.

Councilmember Stokes agreed that 2021 was an amazing year. In light of all the changes, the Commission worked hard to keep things moving forward. The Council and Mayor Robinson have indicated how impressed they are with the work of the Commission. He said the BelRed Arts District has been a topic of conversation for a long time and it is good to see progress being made. Coming up is the BelRed look-back planning exercise. The plan for the BelRed area was developed more than ten years ago and since then much has changed, including the new focus on arts and culture in the district. The BelRed as envisioned in the original planning is not the BelRed that has developed. It will be interesting to see what happens as the look-back kicks off. The exercise will actually be a look-forward that will result in some big changes. The Commission is in a position of being able to provide input to and exert a lot of influence on the Council, particularly in regard to the BelRed Arts District. Nationally arts districts that exist in isolation do exist and do survive, but they do better when integrated with the rest of the community. The need to increase arts and culture throughout the city is clear and the Commission is in the forefront of helping the Council make decisions that will bring Bellevue forward regionally in a very strong way.

C. Artspace Market Study

Ms. Hoffman reminded the Commissioners that in 2017 the city engaged with Artspace to conduct an arts market study. Artspace is a non-profit developer of affordable commercial and housing spaces for artists and arts organizations. Their developments are family friendly and often include two or three bedrooms of mixed live/work space. Along with affordable living space comes affordable commercial spaces on the ground floors. The 2017 preliminary feasibility study was the first of six phases. The second phase, about to be launched, will involve an art market study to determine things like how much space is needed for affordable artist housing and commercial spaces, and the price ranges involved. The organization, based in Minnesota, has quite a few projects around the Puget Sound region, including the Mt. Baker Lofts, the Hiawatha Lofts, the Tashiro Kaplan Artist Lofts, and the Everett Lofts. Once the spaces are developed, Artspace stays on as the property manager.

After the arts market study is completed, the study work will be completed and it will be the time to step back and review the data, to determine if such a development makes sense for Bellevue, and if all assumptions are correct. If the review brings up a green light, the next phase will be the first of three pre-development phases. The pre-development phase will cost about \$750,000. A deliverable report on the arts market study is expected to be in hand in August 2022.

Answering a question asked by Commissioner Gowdy, Ms. Hoffman said there is a small city-owned property near the 136th light rail station. The initial feasibility study had that parcel in view. She added that one thing that sets Artspace apart is that their properties run in the black and as such do not have to return to municipalities once their projects are open.

Councilmember Stokes expressed his excitement about the possibilities. He said it is great to see things moving forward.

Chair Lau Hui asked about the steps in the process. Ms. Hoffman said she needed to gather some more information on that topic. She said her impression was that the results of the survey will be brought to the Commission first before forwarding it to the Council. She allowed that funding will have to be found for the pre-development phases, but it will not necessarily have to come from the city. She said she will be delving into various funding paths while the arts market study is underway. Funding to actually begin development will likely come in part through a partnership with the city.

D. Donation

Ms. Hoffman shared with the Commissioners the fact that Jerry Lee approached the city with an offer to donate a work by Gerard Tsutakawa. The bronze work, titled *Josho #5* and created in 2003, is 7 feet 9 inches tall and was valued at between \$30,000 and \$40,000 at its last appraisal. If the Commission recommends accepting the donation, the issue will go to the City Manager for final approval. The work will cost the city nothing except for installation and any storage costs prior to finding a suitable location for it. Mr. Lee has indicated he would like to see the piece sited along the Grand Connection. Artist Gerard Tsutakawa is well known and adding one of his works to the city's collection would only raise the tone and tenor of the collection.

Ms. Hoffman said the work has traveled the world. On loan from the artist, it was displayed in Washington, D.C. at the office of the then Secretary of Commerce and former Washington state Governor Gary Locke. It traveled to Beijing when Locke was appointed US Ambassador to China. Brought back to the United States, the work was sold by the artist to the current owner and it has since been sited at MG2 Corporate Headquarters in Seattle.

Ms. Hoffman said the recommendation of the staff was to accept the donation pending the approval of the City Manager.

Commissioner Bhargava asked how the work would actually be moved. Ms. Hoffman said the work would be done by contracting with an art handler.

Commissioner Aldredge said it would be wonderful to have a Tsutakawa piece in the city's collection. She agreed the Grand Connection would be an excellent location for the work. Commissioner Bhargava concurred.

A motion to accept the donation of *Josho #5* for the city's art collection was made by Commissioner Aldredge. The motion was seconded by Commissioner Gulati and the motion carried unanimously.

5. COMMISSION QUICK BUSINESS – None

6. REPORTS

A. Commissioners' Committee and Lead Reports – As Noted

B. Project Updates from Staff

Ms. Stamm reported that the 2020-2021 grants have all been completed. There were a few organizations that were unable to make their scope of work and were therefore not awarded any funding. Some of those organizations have reapplied for 2022. The East Link public art work at the South Bellevue park and ride is now in place.

Ms. Hoffman added that the Council had planned to return to in-person meetings in January, but they have since pushed that back. Accordingly, the plan is for the Commission to continue meeting virtually for at least the first part of 2022.

8. ADJOURNMENT

Chair Lau Hui adjourned the meeting at 6:20 p.m.



Community Development

Action & Discussion

Information

Tuesday, January 11, 2022

Bellevue Arts Commission

Zoom Meeting: 4:30 pm

Commission Staff Contact: 425.452.4064

121st and Spring Boulevard Artwork Concept Update

At this meeting, the Arts Commission will be presented an update on the concept design for an artwork planned for the intersection of 121st and Spring Boulevard in BelRed by artist Jill Anholt.

BACKGROUND

Artist Jill Anholt was selected to consult as the planning artist for the BelRed Streetscape Plan in 2017. A part of her scope was to develop two artwork pre-concepts for BelRed for early adoption of the public art component of the streetscape plan. The artist developed a concept for a series of mobile artworks and one fixed artwork at the intersection of 121st and Spring Boulevard. The Arts Commission recommended to proceed with the fixed artwork, at that time entitled *Cut and Fill*. The artwork's form was an exaggerated representation of the topography that was cut and filled to build the original BNSF alignment just to the west of the site. On the artwork, it was proposed to include the words cut and fill translated into different languages of people that have been "cut from" or moved into BelRed.

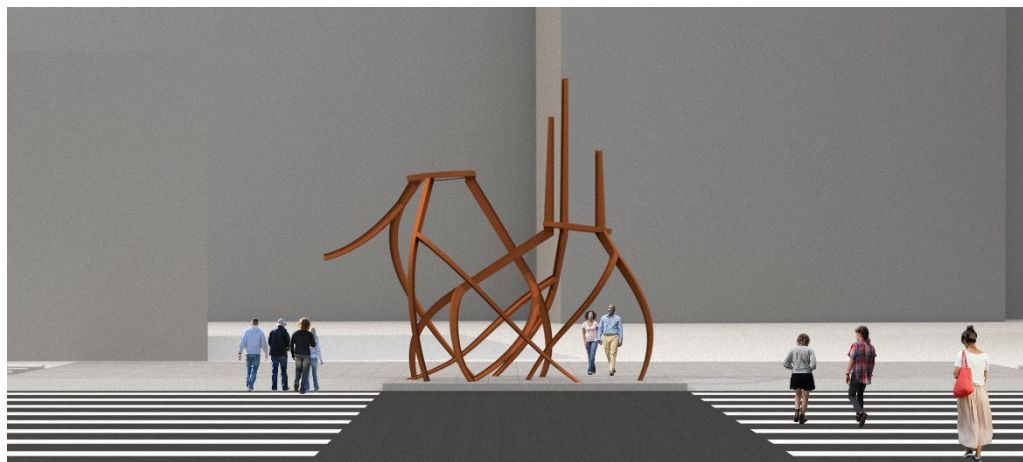


Original *Cut and Fill* concept

The artist has met with both Isan Bellevue, the organization working to commemorate the impact and presence of the Japanese American community in Bellevue, and the Snoqualmie Tribe. Isan Bellevue saw the original concept and approved of the direction of the artwork. After an initial meeting with the Snoqualmie Tribe, it was clear that the original artwork concept needed to evolve to address their concerns. Artist Jill Anholt then developed an evolved concept that received extremely positive feedback from the tribe representatives. To date, the artist and staff are working to schedule a second meeting with Isan Bellevue to review and get feedback on the current design.

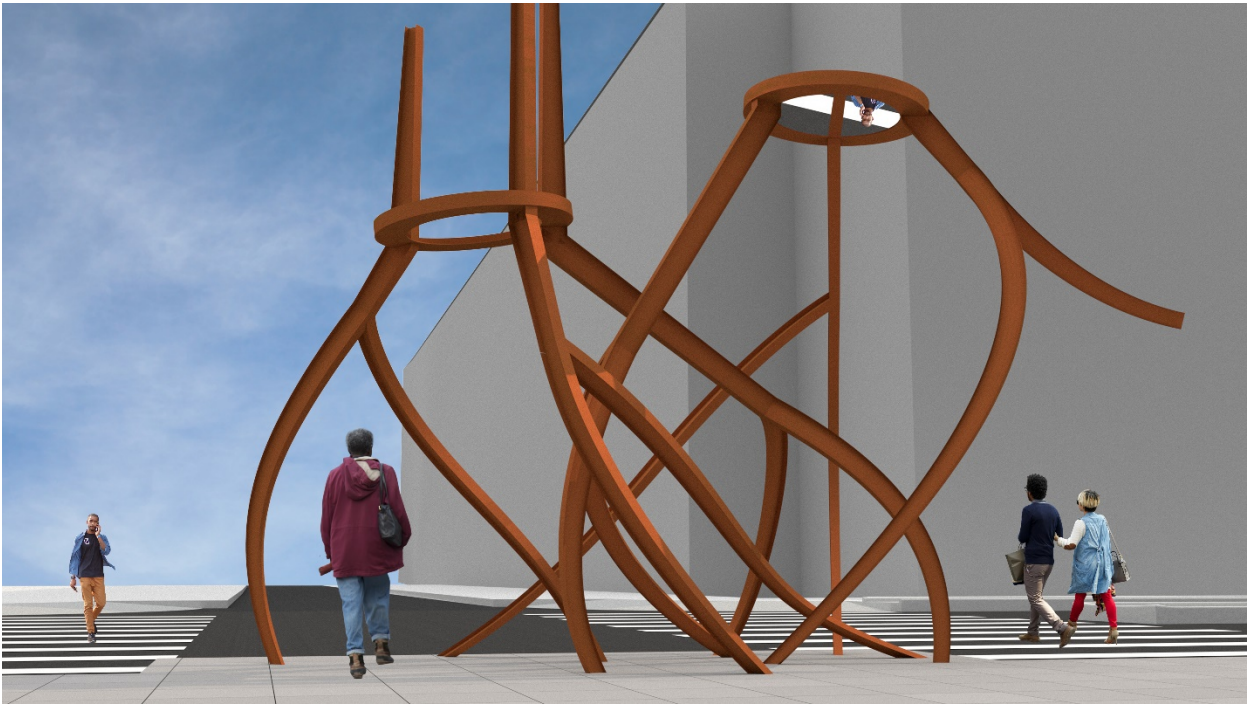
UPDATED CONCEPT

The updated artwork concept includes two forms resembling tree roots seemingly intertwined.



From artist Jill Anholt:

Our review of our Cut and Fill concept with the Snoqualmie Tribe revealed cultural sensitivities and a much different perspective on this place in Bellevue than what we had previously been working with. To summarize their feedback, they felt that the original artwork concept somewhat “glorified” an engineering feat that manipulated and destroyed the vast forest that existed in this area that Snoqualmie peoples have had a deep connection to for thousands of years. The feedback from this meeting allowed for an opportunity to rethink the colonial lens through which this initial concept was created.



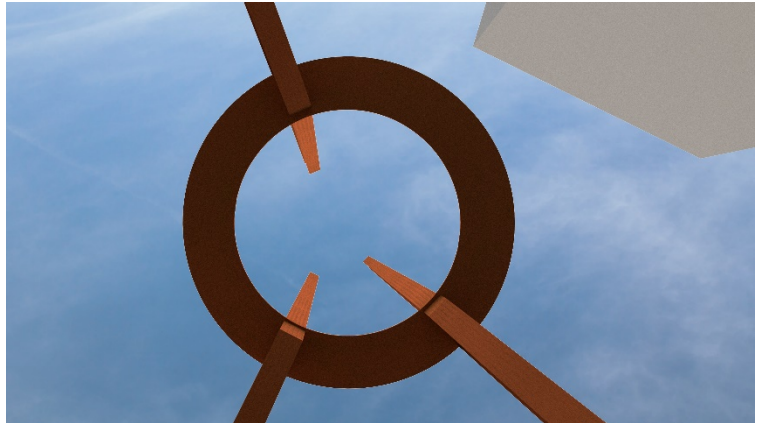
Utilizing the same material – rail line profiles/I-beams which are the ubiquitous language of industry beginning in the 19th century, our new concept, rather than celebrating the control and manipulation of nature and natural resources, instead celebrates the resilience and adaptability of nature and its rich inter-connections to all things. Our new concept acknowledges the deep roots to this land and their connections existing physically below the ground as well as through time via memory and stories. Our revised concept offers a new opportunity for connections and conversations between different people and the built and natural environment.

Understory (working title) is an organically shaped gateway sculpture that resemble tree roots hidden below the forest floor. The two forms appear to reach for each other, their roots interconnecting, creating a space for occupation and interaction within them. Circular elements at the apex of each form mark where a tree trunk might have existed above.

One circle contains a mirror polish stainless reflective surface below that places humans within the natural system, rather than in opposition or in control of it. This form also references the story of the early Japanese Americans that turned previously logged areas into farmland and worked and lived with the land until their incarceration in World War II.



The other circle is left as a void. Roots from below extend toward the sky evoking the memory of the tall trees that once occupied this space. The artwork forms are composed of tapered custom I-beam sections made Corten steel, an industrial material that changes visibly over time as it is exposed to the natural environment.



NEXT STEPS

The artist will be meeting with Isan Bellevue to get their feedback on the new artwork concept. Once that process has been completed, staff will present a recommendation to approve the artwork concept to the arts commission. If the commission recommends to approve the concept as designed, the artist will move forward with the final design of the artwork.

ATTACHMENTS

None.

PRESENTER CONTACT

Scott MacDonald, Arts Consultant
Ambergris Project, scott@ambergris-project.com

Jill Anholt, Artist
Jill Anholt Studio, jill@jillanholt.ca

STAFF CONTACT

Manette Stamm, Arts Program Assistant
425-452-4064, mstamm@bellevuewa.gov

Tuesday, January 11 2022

Bellevue Arts Commission

Zoom Meeting: 4:30 pm

Commission Staff Contact: 425.452.4064

2022 Work Planning

At this meeting, staff will present information about the Arts Program's 2022 work plan.

OVERVIEW

Staff has divided planned work into six different categories and major initiatives: grants, BelRed Arts District, Bellwether 2022 and 2023, public art, planning projects and other.

A key disclaimer: Like 2020 and 2021, the ongoing COVID-19 pandemic may create ongoing disruptions to the Arts Program's planned work as staff and project schedules shift in response to changing conditions and priorities. Additionally, staff recognizes that current staffing levels do not support fulfilling all aspects of the work plan and may necessitate some work being contracted out or delayed or reduced in scope.

ARTS PROGRAM 2022 WORK PLAN		
CATEGORY/PROGRAM	WORK ITEMS	Commission Action Needed in 2022
GRANTS PROGRAM		
2022 Grants Program	Administer program	None
2023 Grants Program	Update guidelines & present to Commission	Approve Guidelines
BELRED ARTS DISTRICT		
BelRed Mural Program	Artwork selection, implementation	Approve Call, Artists, Designs
130 th Streetscape Public Art	Fabrication and Installation Coordination	None
121 st Streetscape Public Art	Completion of concept design	Approve Final Design
Creative Business Association	Stakeholder Engagement/Organizing	None
BelRed Arts Implementation Plan	Strategies for Arts District implementation	None
BelRed LUPI	Possibly hold for 2023	None
Artspace Market Study	Core group & focus group facilitation	Review Final Deliverable
BelRed Look Back	SME and Arts District implementation	None
Bellwether 2022	"Bellwether Lite"	None
Bellwether 2023	Planning for 2023	None
PUBLIC ART (note two items in BelRed above)		
Downtown Park NE Corner	Fabrication and Installation Coordination	None
Jerry Lee Donation	Artwork Acceptance policy, siting	None
Crossroads Public Art	Start the process for new installation in 2023 (\$100,000)	Approve Call
Wilburton Children's Tiles	Clean all tiles, crate new works in 2023 (\$54,000)	None
When Then Becomes Now	Site and stop accruing storage fees	None
Maintenance & Restoration	Ongoing	None
Fire station 10 & 5	SME on Fire funded public art projects	Approve Selected Artwork
Portable Works Collection	Site 2020 acquired artworks, 2022 call	Approve Call, Selected Artwork
Downtown Utility Box Wraps	Artwork selection, implementation	Approve Artists, Designs
Utility Box Wraps Phase 3	Box Wraps beyond BelRed & Downtown	Approve Call
Possible project: Black History Month	Curator developed content on Black excellence in art	None

PLANNING PROJECTS		
Public Art Policies	Donation, Deaccession, & Accession policy updates	Approve Updates
City Planning Projects: Eastrail, Wilburton, others	Subject matter experts, arts community engagement	None
Japanese American Cultural Legacy Project	Assist Community Organizations as needed	None
Arts Business Retention/Tourism		None
OTHER		
Arts Community/Partner Engagement		None
Arts Commission		Participate at Monthly Meetings

NEXT STEPS

In the first quarter of 2022, staff will be launching several new initiatives including the Artspace Arts Market Study, Americans for the Arts: Arts & Economic Prosperity 6 Study, a new BelRed Mural Program, and a major update to the Arts Grants. Throughout the year, ongoing attention will be paid to public art projects currently in development like the project planned for the NE Corner of Downtown Park, by Marc Fornes, 130th and Spring by Po Shu Wang, and 121st and Spring by Jill Anholt. Staff will continue to care for the collection, implement the utility box wrap program, and support the arts community as is possible during the pandemic.

STAFF CONTACT

Lorie Hoffman, Arts Community Manager
425-452-4246, lhoffman@bellevuewa.gov

Portable Artworks Call

At today's meeting, staff will present the call for portable artworks to be included in the Bellevue Art Collection.

Motion: A motion to recommend to approve the Portable Artworks Call as written.

BELLEVUE ART COLLECTION'S MISSION

The City of Bellevue seeks to be a vital platform for cultural exchange and creative inspiration. The City turns to living artists to enrich the collective experience of Bellevue's public places through permanent commissions and a growing collection of moveable artworks funded through the Public Art Program. A segment of the collection is devoted to artworks that raise the discourse on the defining aspects of Bellevue's civic life, exploring the diverse identities of our residents, converging cultures, international connections, technological currents and interplay between nature and the urban experience that make Bellevue's environment unique. Bellevue's art collection helps document the dynamic moments and complexities of Bellevue's cultural life and is an important resource for future generations.

BACKGROUND

In 2020, the Arts Commission approved a call for portable artworks to help artists during COVID-19. That call was open to all artists living in King, Pierce and Snohomish counties. Artists were able to submit up to ten works, each worth \$2,400 or less. The Arts Commission chose to purchase 20 artworks from 17 artists, recommended from a panel working from a budget of \$24,000 plus sales tax. All works are now on display along the second-floor City Hall catwalk and will soon be placed in more semi-permanent homes.

NEW PORTABLE ARTWORKS CALL

For this call, the City of Bellevue Public Art Program is seeking to purchase artworks from submitted two-dimensional visual art (drawings, mixed media, painting, photography, prints, and textiles), electronic art (digital, film, new media, and video) and small three-dimensional artwork (no larger than 18" in any direction and easily moved by one able-bodied person). Staff see this call as a relatively easy way to continue supporting artists during COVID-19.

The total budget for the purchase of portable artworks is \$38,000 plus sales tax (10.1%). An additional framing budget will be accounted for and the responsibility of the city. Balancing the desire to purchase quality artworks for the collection and to purchase artwork from more artists, particularly during the ongoing pandemic, the new call has a maximum price of \$3,800 per artwork and/or per artist. The panel can choose to purchase multiple pieces from the same artist as long as the total does not exceed \$3,800. The online deadline for submission is February 25th with the call posted one month or more prior. The call is open to all professional artists and artists working towards being professional that live in King County.

Following the deadline, staff will convene a panel comprised of the Chair of the Arts Commission, or their designee, and two arts professionals. The selection criteria will include artistic merit and compelling themes relevant to the mission of the collection. Artworks that contain violence, profanity, or nudity will not be purchased. Recommended artworks for purchase will be presented to the full Arts Commission for approval prior to purchase. The call is included on the following pages. If the Arts

Commission recommends approving the call, staff will work to include details about where online to apply once the online application has been built.

TIMELINE

Below is a proposed timeline for the call.

January 12-17, 2022	Call published
March 11	Call closes, complete applications due at midnight.
March	Panel review of applications
April 4-15	Panel meeting, recommendations for purchase
April 18	Notification of selection and confirmation of artwork availability
May 3	Presentation of Panel recommendations to BAC for approval
May-onward	Collection of artworks and presentation at City Hall

CALL FOR PORTABLE ARTWORKS

CITY OF BELLEVUE ARTS PROGRAM

Deadline: March 11, 2022, midnight

OPPORTUNITY

The City of Bellevue seeks to purchase portable artworks that exemplify the mission of the Bellevue Art Collection. The maximum purchase price of selected artwork(s) per artist is \$3,800 (plus 10.1% sales tax). The call is open to all professional visual artists and visual artists working towards being professional that live in King County. The deadline for consideration is March 11, 2022. Purchased artworks will be included in the Bellevue Art Collection and will eventually be located throughout City-owned and publicly accessible buildings and offices. The future locations of the purchased artworks are at the City of Bellevue's discretion.

BELLEVUE ART COLLECTION'S MISSION

The City of Bellevue seeks to be a vital platform for cultural exchange and creative inspiration. The City turns to living artists to enrich the collective experience of Bellevue's public places through permanent commissions and a growing collection of moveable artworks funded through the Public Art Program. A segment of the collection is devoted to artworks that raise the discourse on the defining aspects of Bellevue's civic life, exploring the diverse identities of our residents, converging cultures, international connections, technological currents and interplay between nature and the urban experience that make Bellevue's environment unique. Bellevue's art collection helps document the dynamic moments and complexities of Bellevue's cultural life and is an important resource for future generations.

BACKGROUND

Purchased portable art will join a growing collection of portable artworks within the Bellevue Art Collection. The current collection is comprised of over 70 permanently sited and integrated artworks and portable works by acclaimed artists such as Lois Graham, Judy Onofrio and Jae Hyo Lee and coming artworks by artists Marc Fornes and Po Shu Wang. Most of these artworks are sculptures. The goal of growing the collection of portable artworks is to diversify the collection by adding a range of visual art mediums and artistic voices. Portable art will also increase the number of artworks accessible in city-owned buildings in Bellevue neighborhoods.

ELIGIBILITY

This call is open to all active professional visual artists in King County, Washington. Artists must be able to deliver or arrange for the delivery of artwork to Bellevue. Galleries and representatives of artists are eligible to submit on behalf of artists, but the artist themselves must still be an active visual artist in King County, regardless of where the gallery or representative is located.

WHAT WE'RE LOOKING FOR

Available unframed two-dimensional visual art (drawings, mixed media, painting, photography, prints, and textiles), electronic art (digital, film, new media, and video) and small three-dimensional artwork (no larger than 18" in any direction and easily moved by one able-bodied person). The artwork will enter a rotating portable works collection. Artists may submit up to five images of or links to available artworks. Framing, hanging, and presentation costs will be managed completely by the City of Bellevue and is not a part of the \$3,800 maximum purchase price of an artwork. The Arts Program has a limited stock of electronic equipment; if digital artworks are chosen for purchase, City of Bellevue staff will work directly with the artist to determine the best presentation method given available equipment.

BUDGET

A total of \$38,000 will be used to purchase portable artworks with a price of \$3,800 or less per artwork. Only one selected artwork will be purchased from an artist unless the total purchase price of the artworks adds up to \$3,800 or less. Sales tax is in addition to the purchase price. Please note that the purchase will not be finalized until City of Bellevue staff has an opportunity to view the artwork in-person, if requested, and the Arts Commission votes to approve the purchase.

If electronic artwork is submitted, a link or digital file easily viewable by the panel should be included in the submission. Artists that need to arrange to ship their artwork will need to cover their own shipping costs or can include that in the \$3,800 artwork cost. Artists can alternatively choose to hand deliver artworks to Bellevue City Hall. In some cases, City of Bellevue staff may be able to pick up artworks from studios or galleries.

APPLICATION DEADLINE

Friday, March 11 at midnight. Please allow ample time to complete your application; applications submitted after the deadline will not be accepted. If you are experiencing technical difficulties, please reach out before the deadline. If you do not have access to a computer, arrangements can be made to submit paper applications; in this case, please contact us no later than February 14.

APPLICATION REQUIREMENTS (to be submitted online)

- **ARTIST APPLICATION** Please fill out all required fields in the online application, including your primary location, artistic medium, and the below items.
- **ARTIST'S STATEMENT** (not to exceed 150 words) Please write a brief description of your artistic intent - inspiration, interests, point-of-view, techniques, etc.
- **ARTIST'S BIO** (not to exceed 150 words) Please summarize your background as well as artistic influences, training and major achievements.
- **UP TO FIVE IMAGES (OR LINKS) OF AVAILABLE ARTWORK** Artists are encouraged to submit up to 5 images or links to available artworks – this could be five different artworks or multiple images of the same artwork. If your work is digital, we encourage you to submit a link to videos and not the actual artwork file. These images will be used by the panel to determine what artworks to purchase, so good-quality images (1-2MG each) are encouraged.
- **IMAGE DESCRIPTIONS** Please describe your work samples by including title, year made, medium, dimensions and price. Artworks listed without a price will not be considered for purchase. Artists that are not able to deliver artwork to Bellevue must include shipping costs for each artwork included in the price of the artwork. If a submitted artwork is no longer available, City of Bellevue staff will consider other artworks and artists selected by the panel as backups.
- **RÉSUMÉ** (optional)

SELECTION CRITERIA

Artwork will be selected based on the following criteria: artistic merit and compelling themes relevant to the mission of the Bellevue Art Collection. Artworks that contain violence, profanity, or nudity will not be purchased.

SELECTION PROCESS

A panel composed of the Chair of the Arts Commission, or their designee, and two arts professionals, will recommend artworks for purchase. City of Bellevue staff will reach out to artists with recommended works to schedule a time to view the artwork safely in-person unless other viewing means are deemed sufficient. City of Bellevue staff will present the panel's

recommendations to the full Arts Commission for approval of purchase before arrangements are made with artists to view and drop-off/pick up artworks.

The City of Bellevue reserves the right not to select any of the submitted artworks.

NOTIFICATION RESULTS

Artists will be notified by email no later than April 18 to confirm artwork availability. Artists will receive a final notification to make arrangements for the delivery of the artwork no later than May 6, 2022, whether their artwork has been recommended by the selection panel. City of Bellevue staff will present their recommendations to the Arts Commission for approval in May. The approval schedule is subject to change if deemed necessary.

CONTACT US

For questions regarding the call and how to apply, please contact Manette Stamm at mstamm@bellevuewa.gov.

NEXT STEPS

If the commission approves this call, then staff will begin building out the online application, advertising the call, collecting applications, and forming a panel for review. Staff will use the Eastside Artist Roster to find two outside reviewers for the panel.

STAFF CONTACT

Manette Stamm, Arts Program Analyst
425-452-4064, mstamm@bellevuewa.gov

BelRed Mural Program Pilot

At this meeting, staff will give an overview of a new Mural Program for Bellevue, piloting in BelRed.

BACKGROUND

Currently, the BelRed Creative Arts District has very low visibility. Only 26% of respondents to the recent 4Culture Creative Consultancy Report were aware of the Arts District Designation.

There is also a sense of urgency to do something that fosters the BelRed Arts District identity with one community member describing the pace of City implementation as “Glacial.”

The proposed BelRed Mural Program Pilot would build off the positive public reception to the recent Box Wrap initiative in BelRed and continue to use Public Art for creative placemaking. Murals are highly visible, relatively low-cost, and can have a fairly quick turnaround. Murals are an ideal way to show visible progress on the Creative Arts District while other, longer initiatives like Land Use Code Updates work their way through the system.

Affected organizations would include businesses and property owners who could apply to have a mural painted on their walls, as well as artists would be contracted to create the artworks.

THE FUTURE CALLS

Next month, staff will present the official call for artists to cover up to 2,000 square feet of walls in BelRed. Simultaneously, staff will present a call for local businesses owners for wall space.

The artist call will be for qualifications and will include artists living in King County.

The selection panel will select both businesses and artists (independent of each other) and staff will work with both parties to establish final designs and installation. The City will require agreements with both parties and will provide a stipend of \$25/square foot to artists painting murals directly on walls, covering supplies and labor. The City will also be responsible for any required permits and for priming the wall, if required, before the mural is installed.

In addition to this call, staff will present a call for projection-based light art murals. The artist payment would be a flat rate per artwork. The budget for this pilot project is \$135,000 and comes from a combination of public and private funds, at least \$90,000 from corporate sponsors and up to \$45,000 from the Arts CIP. Staff are continuing efforts to solicit funding from corporate entities.

If the Arts Commission approves the calls presented at their next meeting staff will work to advertise the calls and develop a selection panel. Staff will collect artwork submissions via SurveyMonkey Apply, the program used to collect and manage our Grants Program and other calls. Artists will be required to be residents of King County. The call will be advertised to artists on the Eastside Artist Roster and shared with 4Culture and cities on the Eastside. Once the call closes, staff will work with a review panel comprising one Arts Commissioner, one community stakeholder from the BelRed Arts District Stakeholder group and one art professional to select artwork. The panel's recommendations will be presented to the Arts Commission for their approval before staff works to implement the wraps.

PROPOSED TIMELINE

Below is a proposed timeline for the call.

January 31, 2022 Sponsorship solicitation ends

February 1	Calls go to Arts Commission
Feb 2	Calls for Walls and Artists published
March 9	Calls close
March	Panel review and meeting
April 5	Selected Artists go to Arts Commission
May	Development of designs
June 7	Final Designs go to Arts Commission
June	Permitting and contracting (agreements)
July - Sept	Wall preparation and installation
Oct - Dec	Review and evaluate for project continuation

NEXT STEPS

Staff will finalize calls and incorporate any Commission feedback. Staff will present final calls at the next Commission meeting.

STAFF CONTACT

Manette Stamm, Arts Program Analyst
425-452-4064, mstamm@bellevuewa.gov



Community Development

Reports

PROJECT UPDATES

GENERAL

CIP Cultural Arts Fund

No update to report.

2022 Funding Cycle and Allocations Committee

Update: 2022 awards are currently being accepted.

2023 Funding Cycle and Allocations Committee

No update to report.

PLANNING PROJECTS

Artspace

Update: We have received a draft scope of work for phase 2: Art Market Study. The contract is getting drafted and should be sent for signature routing in January 2022. Work should start in Q1 2022 and be complete in Q3 2022. This is the last study phase to be completed before predevelopment could begin.

BelRed Arts District

Update: Tonight, you will receive an informational report on an upcoming Pilot Mural Program to promote creative placemaking in BelRed.

Cultural Compass

No update to report.

PUBLIC ART

130th Streetscape Public Art

No update to report.

121st and Spring Artwork

Update: An update will be given at this meeting.

Bellwether 2021

No update to report.

Downtown Park Public Art

No update to report.

East Link Public Art

No updates to report.

Eastside Artist Roster

Update: An update will be given at this meeting.

Grand Connection

No updates to report.

Mural Program

Update: An update will be given at this meeting.

Public Art Collection & Maintenance

No updates to report.

Portable Art Collection

Update: An update will be given at this meeting.

Utility Box Wraps Program

Update: The review panel is meeting in mid-January and recommended artists will be presented for approval to the Arts Commission at the next meeting.



Community Development

Information

2022 Grant Acceptance thank you notes

Applicant: Martha Garrett, Lake Washington Symphony Orchestra

Applicant note: Thank you so much for the award! We appreciate your continued support.

Applicant: Caitlin M. Bell, Pacific Northwest Ballet

Applicant note: Thank you so much! We are grateful to be in partnership with the Bellevue Arts Commission once again.

Applicant: Emiko Karunamrita Noor Nakamura, Eurasia Arts Foundation

Applicant note: Thank you so much for the GRANT. We do appreciate it greatly!!!!

Applicant: Susan Den, Performing Arts Center Eastside

Applicant note: Our sincere thanks for your support as PACE contributes to the magic of the arts shared with the Bellevue community.

Applicant: Vania Bynum, Artist

Applicant note: Thank you kindly for awarding me this exciting opportunity to expand the artistic experiences in Bellevue, WA. Although I live in Bellevue, I have done most of my work outside of the city. I look forward to sharing my art more on the Eastside in the future. I am happy to accept this Bellevue Arts Funding grant.

Applicant: Kyoko Maruyama, Japanese in America Foundation

Applicant note: We are grateful and honored to receive a grant from Bellevue. Thank you very much for your support.

Applicant: Caroline Faflak, Bellevue Youth Symphony orchestra

Applicant note: Thank you very much for your generous funding, on behalf of all the BYSO's staff, students, and musicians!

Applicant: Frank Stilwagner, Village Theatre

Applicant note: We are truly grateful for the Commission's ongoing support of our Youth Education programs. Thank you, Frank Stilwagner Director of Advancement

Applicant: Era Pogosova, Theatre33

Applicant note: Thank you so very much for the great news!

Village Theatre

Mainstage + New Works + Youth Education

December 3, 2021

Paul Manfredi, Chair
Bellevue Arts Commission
450 110th Ave NE
Bellevue WA 98004

Dear Paul,

Village Theatre is grateful to have received payment for the \$7,000.00 grant from the Bellevue Arts Commission in support of our Youth Education programming for students on the Eastside (funds received December 3, 2021). The support of the Bellevue Arts Commission plays a vital part in fulfilling Village Theatre's important mission.

Village Theatre's productions have been recognized for their achievements in both performance and technical categories, our youth education programs continue to grow and adapt to reach students in new ways, and our new works program has expanded to include activities across the nation in addition to serving our local writers and creators.

It is through the support of organizations like the Bellevue Arts Commission that we have become an enriching cultural center of our community. Your donation directly supports our ability to provide educational experiences for our students.

We are pleased to publicly recognize your gift and intend to list your name as: **Bellevue Arts Commission**. If you would like to change the way your name is listed, our Donor Services & Database Specialist, Sue Short, would be happy to assist you. She can be reached at (425) 392-1942 x120 or sshort@villagetheatre.org.

Please feel free to contact Tracie Mahadeo, Stewardship Manager, at (425) 392-1942 x151 or tracie@villagetheatre.org with any questions you may have.

Thank you again for investing in Village Theatre's Youth Education programming.

Sincerely,



Robb Hunt
Executive Producer



Frank Stilwagner
Director of Advancement

Village Theatre, located in Issaquah and Everett, is registered with Washington State's Charities Program as required by law. Your donation is tax deductible to the extent allowed by law. For more information, please contact your own tax advisor. In return for your contribution, you have received no goods or services.

Francis J. Gaudette Theatre
303 Front Street North, Issaquah, WA, 98027

Everett Performing Arts Center
2710 Wetmore Avenue, Everett, WA, 98201

VillageTheatre.org • Box Office: (425) 392-2202 • Administration (425) 392-1942

City of Bellevue Arts Program
450 110th Ave NE, PO Box 90012
Bellevue, WA 98009

Dear City of Bellevue Arts Program,

On behalf of Bellevue Arts Museum, thank you for your generosity and commitment to artists, makers, designers, and our community! Your contributions in the amount of \$8,500.00 and \$5,000.00, received on 11/19/2021 create opportunities for community members of all ages to explore art, craft, and design.

Your support helps us to bring the best of BAM to the community through our BAM from Home program. This online series of videos and activities offers virtual curator talks exploring works on view at the Museum, as well as how-to videos for crafts that families can make together.

Also, Following Washington state's recent reopening under the Washington Ready plan, Bellevue Arts Museum's building is now open at full capacity. A few of our current and upcoming exhibitions are highlighted below.


Trace: Terry Grant & Purnima Patel, through January 2, 2022

Tip Toland: Empathy in Clay, through January 2, 2022

BAM Biennial 2021: Architecture & Urban Design, through April 24, 2022

Again, on behalf of the staff and the Board of Trustees, thank you for your support of Bellevue Arts Museum. We are inspired by your generosity and belief in BAM's mission, and together we can do even more.

Sincerely,



Rebecca A. Lyman
Board President
Bellevue Arts Museum

P.S. Your employer might match your donation to BAM! Many employers match contributions dollar-for-dollar, or more. Find out if your company participates in matching gift programs by contacting its Human Resources, Personnel, or Community Relations Department and follow their instructions. Thank you for taking the extra step to increase your impact!

Bellevue Arts Museum recommends consulting with a tax professional regarding the tax deductibility of specific gifts. Bellevue Arts Museum is a 501(c)(3) nonprofit organization; tax ID #91-6028261. Your donation is tax-deductible to the extent allowed by law. No goods or services were provided in exchange for this gift.

12/21/2021

City of Bellevue
ATTN: Lori Hoffman
PO Box 90012
Bellevue, WA 98009

Dear Lori,

Thank you for the City of Bellevue's recent gift of \$8,500 on 12/6/2021 to KidsQuest Children's Museum for the 2021 Eastside Arts Partnerships Grant. As we move towards the end of the year and embark on the pace of a new season, KidsQuest is continuing to focus on accessible options for families to engage with the Museum. We are so grateful for your support of our programs.

A few of the programs your gift supports:

- **Free In-Museum Programs** - We are excited to welcome back beloved in-museum programs, including Story Time, Science Hour, Engineering Hour, Play with Clay, Play with Paint, and Weekend Playshops!
- **Class Scholarships** – KidsQuest offers a variety of in-person and virtual classes for infants, preschool, and school aged children! Donors like you make class scholarships possible.
- **Membership** – In partnership with the Museums for All initiative, KidsQuest offers a reduced rate on memberships for patrons who utilize an EBT, WIC, Chip, Provider One, or a Foster Parent card. KidsQuest also offers membership scholarships for patrons who need assistance beyond the Museums for All program. This expands KidsQuest's access offerings and allows families who want to visit frequently to become annual members.



With the help of our donors, KidsQuest's mission reaches far beyond the Museum's walls. As we look back on 2021, we acknowledge those that pushed us forward. **Thank you again for supporting KidsQuest Children's Museum!**

Sincerely,

A handwritten signature in black ink that reads "Putter Bert".

Putter Bert
President and CEO
KidsQuest Children's Museum



December 21, 2021

Manette Stamm, Arts Program Assistant
City of Bellevue
mstamm@bellevuewa.gov

"I've been able to move closer to a place where I accept myself for who I am, where I feel I am welcome, and where I belong. I went from isolation to inclusion, to a place where despair could be exchanged for delight."

– Aileen, Path with Art participant artist

Dear Manette,

Thank you to the City of Bellevue for your payment of \$2,000.00 (check# 00383240) which recognizes the fulfillment and completion of our 2021 Bellevue Arts Grant. We appreciate this recognition and support of our programming efforts, particularly as we continue our online learning opportunities, providing immediate stability and hope for students like Aileen, and others, enrolled in our arts engagement programming.

With your help and generosity, Path with Art ensures access to the transformative power of art, making Seattle a more vibrant place for all. As noted by Aileen, our participant quoted above, Path with Art provides our most vulnerable neighbors with needed opportunities for healing, connection, and joy. Thank you for your commitment to Path with Art participants and to our greater community.

Art has the capacity to do many things: entertain, instruct, console, inspire, and transform. Art fosters perspective, empathy, and understanding by taking us deeper inside ourselves and others. Art also creates opportunities to: develop new neural pathways; build resilience, and rewrite personal histories from pain to hope.

We are honored The City of Bellevue Arts Program became a part of our Path with Art community. We believe in the power of Art and in the ability of each Path with Art participant artist to alter past traumas, connect with a supportive community and reach their own goals. By working together, we make positive change possible for each member of our community.

With gratitude,

A handwritten signature in dark ink that reads 'Laura Rattner'. The signature is fluid and cursive, with the first name 'Laura' being more prominent than the last name 'Rattner'.

Laura Rattner
Associate Development Director

312 Second Avenue South, Seattle, WA 98104 | www.pathwithart.org | (206)-650-0669

Path with Art is a registered 501(c)3 corporation. All donations are tax deductible to the fullest extent of the IRS tax code. Path with Art's EIN number is: 26-0599518.
This letter ensures that no goods or services were given in consideration for this contribution.

S | 6 STUDIOS



OUR GENEROUS SPONSORS:



Bainbridge Island
STUDIO TOUR
The heart of local art!

Bainbridge Island Studio Tour
P.O. Box 10623
Bainbridge Island, WA 98110

Bellevue Arts Commission
450 110th Ave NE
Bellevue, WA 98004-5514

www.bisstudiotour.com | Friday, Saturday & Sunday 10-5

DEC 3-5, 2021

ON BEAUTIFUL BAINBRIDGE ISLAND

Bainbridge Island **STUDIO TOUR**

DEC 3-5, 2021 FRI / SAT / SUN 10-5



1 ELEMENTAL FURNISHINGS

6685 Kojima Ave NE

R



George Brooks and Kathryn Lafond built their brightly lit, craftsman style home in 2017, near their woodshop studio on 2-1/2 acres. Flower and vegetable gardens surrounding the home bring an abundance of wildlife. Medicinal teachings,

cooking classes, and other events have welcomed the community to experience their art.

2 AMERICAN LEGION HALL

7880 NE Bucklin Hill Road

R



In 1949, the eight-year-old American Legion purchased the South Wing of Barracks Bldg. #62 of the Fort Ward Naval Radio Station and shipped it to Bucklin Hill - all for \$960. It now sits on land donated by the parents of Colin Hyde, who died in World War I and for whom the Post is named.

Besides Post Legion events, the hall is used for various civic activities.

3 FILIPINO-AMERICAN HALL

7566 NE High School Road

R



In the 1920's and 30's, many Filipino immigrants came to work on the island's thriving berry farms. When World War II forced Japanese families to leave their properties, Filipino farmhands stepped up to manage the farms. The hall, purchased by the Filipino Farmers Association and built partly of wood

salvaged from the Port Blakely Mill, has served as a social center since 1943. Remodeled in the 1990's, the Filipino-American Hall is one of four island sites listed on the National Register of Historic Places.

4 BAINBRIDGE ISLAND MASONIC CENTER

1299 Grow Avenue NW

R



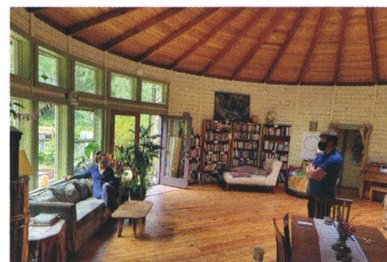
William Renton Lodge #29 of the Free & Accepted Masons of Washington continues a Masonic presence on Bainbridge Island which began in the mid 1800's with Kane Lodge. The local Masons purchased the land on High School Road and built a new

lodge in 1957, after the original lodge building near Blakely Mill burned down in an accidental fire. The Masonic Temple is currently used for fundraising activities for local non-profits, various scouting organizations, and private events.

5 SACRED GROVES

9255 Holly Farm Lane NE

R



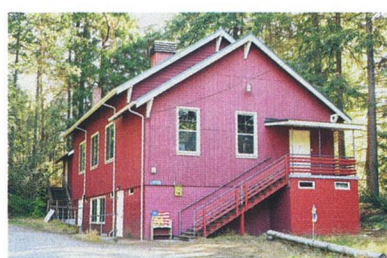
The "Round House" at Sacred Groves is a 34 ft diameter yurt that functions as a space for ceremony and celebration as well as a common space for the residential community on the property. It was built in 2008 and is surrounded

by gardens, forest, and resident chickens and ducks. The space is magical, inviting, and unique.

6 GRANGE HALL

10340 Madison Avenue NE

R



Dating from the 1930's, the simple wooden structure was constructed by the Washington State Grange, a fraternal organization for improving the farm population. Today the Grange membership is focused on community service, and the building is used for a variety of community activities, classes, and events.

R - Restroom Available

Suggested driving & biking route



2022 Commissioner Committee Assignments

GRANTS AND FUNDING COMMITTEE

Review of equity and process updates to the Grants Program guidelines and application and other issues that involve funding the arts. Note: commissioners serving on the grants committee should not also serve on the allocations committee.

- Ashmita Gulati
- Maria Lau Hui

ALLOCATIONS COMMITTEE

Review grant applications and make recommendations to the commission on awards.

-
-
-

PUBLIC ART COMMITTEE

Review and inform arts policies, future public art projects, and other issues specific to the Commission's work of providing guidance on public art. One member from the committee would be assigned to serve on the artist or artwork selection panel for each upcoming public art project that involves an artist or artwork selection panel (one commissioner per project). Note: due to the need to draft art policies, it is recommended that at least one commissioner familiar and/or passionate about diversity, equity and inclusion serve on this committee.

- Ashmita Gulati
- Lydia Aldredge

BELLWETHER COMMITTEE

Advise planning for Bellwether 2022.

- Carl Wolfeich
- Monik Martinez

BELRED ARTS DISTRICT COMMITTEE

This committee would work to help plan inform implementation of the BelRed Arts District. 2022 projects include planning for a future implementation plan for the arts district, engagement with the BelRed Look Back, a land use code update, and other initiatives. Note: at least one commissioner on this panel should be familiar with how land use codes work, with some knowledge of the land use incentive system.

- Ashmita Gulati
- Carl Wolfeich
- Maria Lau Hui

COMMUNITY PARTNERSHIPS COMMITTEE

This committee will be focused on any work that may come up throughout the course of 2022 that involves community partnerships. Example work could be programs developed in partnership with outside organizations to further arts development. An example project could be the Artspace Market Survey.

- Judy Gowdy
- Monik Martinez