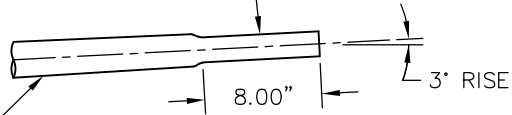


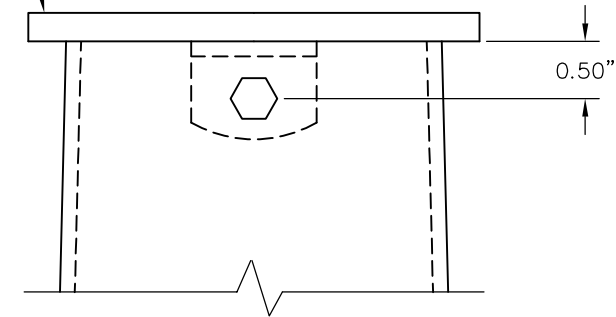
8.00" NOMINAL STRAIGHT
SECTION REFORMED TO
APPROX. 2.38" O.D.

TAPERING SECTION,
SEE DETAIL 2, STD
DWG SL-102-1



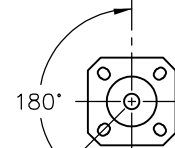
DETAIL 3 - ARM END

SQUARE, 0.229" THICK COMMERCIAL
QUALITY HOT ROLLED MILD STEEL CAP.
CAP HELD IN PLACE WITH A MOUNTING CLIP
AND 0.25" STAINLESS STEEL HEX HEAD
SCREW. CAST ALUMINUM POLE TOP CAP
WITH SET SCREWS ALSO ACCEPTABLE.

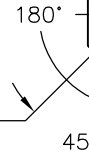


DETAIL 4 - POLE CAP PLATE

- 6"X11" HANDHOLE @ 1'-6" FROM BOTTOM OF HOLE
- 4"X6" HANDHOLE @ 15'-0" FROM BOTTOM OF POLE
- 4"X6" HANDHOLE @ 10'-4" FROM TOP OF POLE
- 2.5"X5" HANDHOLE @ 1'-0" FROM TOP OF POLE



ANCHOR BOLT SLOT



ALL ANGLES MEASURED
CLOCKWISE FROM
LUMINAIRE ARM

- 4"X6.5" HANDHOLE @ 1'-6" FROM BOTTOM OF POLE
- FESTOON OUTLET FRAME @ 11'-7" FROM BOTTOM OF POLE
- 2.5"X5" HANDHOLE @ 6'-1" FROM TOP OF POLE
- INTERNAL DIVIDER
- LUMINAIRE ARM

DETAIL 5 - RADIAL INDEX



City of
Bellevue

STEEL ROADWAY LIGHTING POLE DETAILS
(SMALL WIRELESS FACILITY COMPATIBLE)

DRAWING NUMBER	SL-103-1
SCALE	NONE
REVISION DATE	6/21
DEPARTMENT	TRANS