



Utility Box Wrap Design

Coloring Pages

Natural and man-made,
past, present and future...

These two utility box wrap pattern sets designed by Marsha Rollinger focus on the urban and natural aspects of Bellevue, while recognizing the City's farming past and technological present and future.

The designs feature repeating patterns that contain various shapes and elements specifically relating to Bellevue attractions, locations, architecture, and history.



Pattern Design Set #1. - *Urban Tech*

This design has an urban “tech” feel, relating to the established and growing technology sector in Bellevue and is created using shapes inspired by well-known Bellevue locations and architecture.

Tying to the tech feel, some of the shapes—such as the Bellevue Square windows and the Kelsey Creek Farm barn window—resemble pixels within the design.

The companion pattern features the computer chip inspired icon from the main pattern, which has elements similar to the Bellevue Downtown Park waterfall shape.



Kelsey Creek Farm barn
roof shape and window



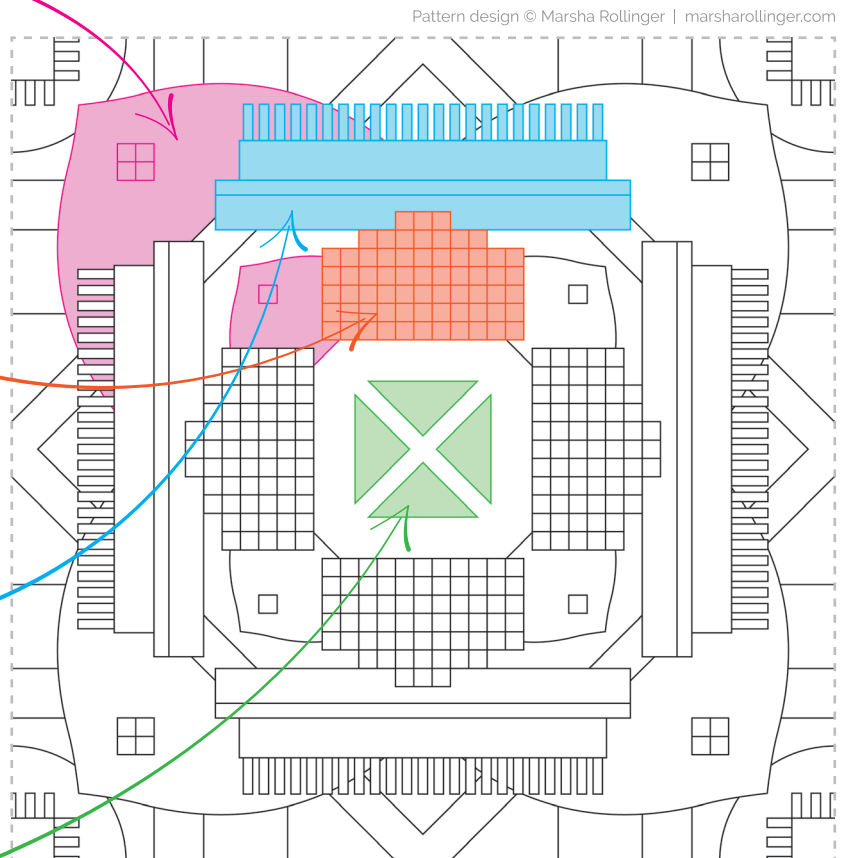
Bellevue Square
windows



Bellevue Downtown Park waterfall

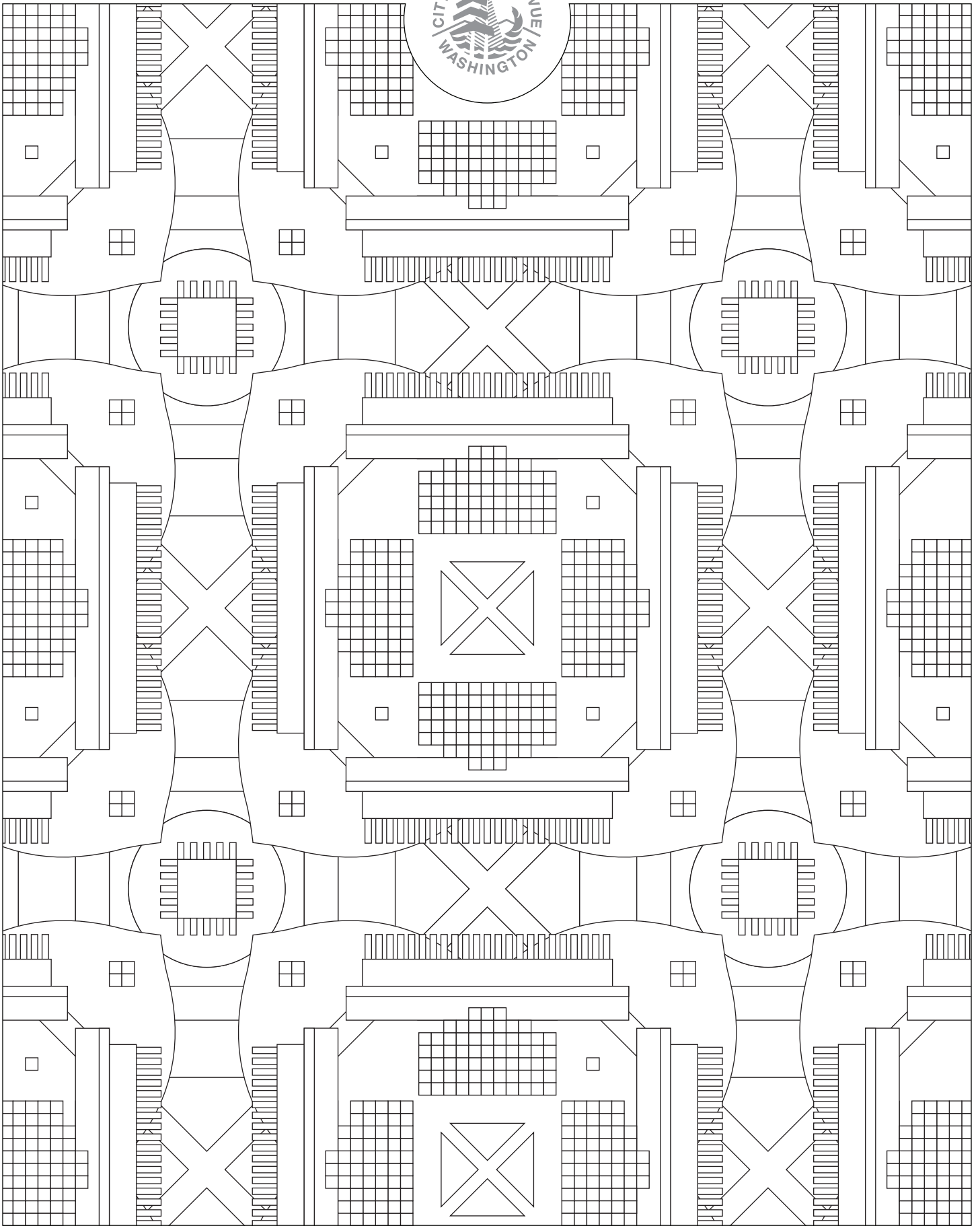


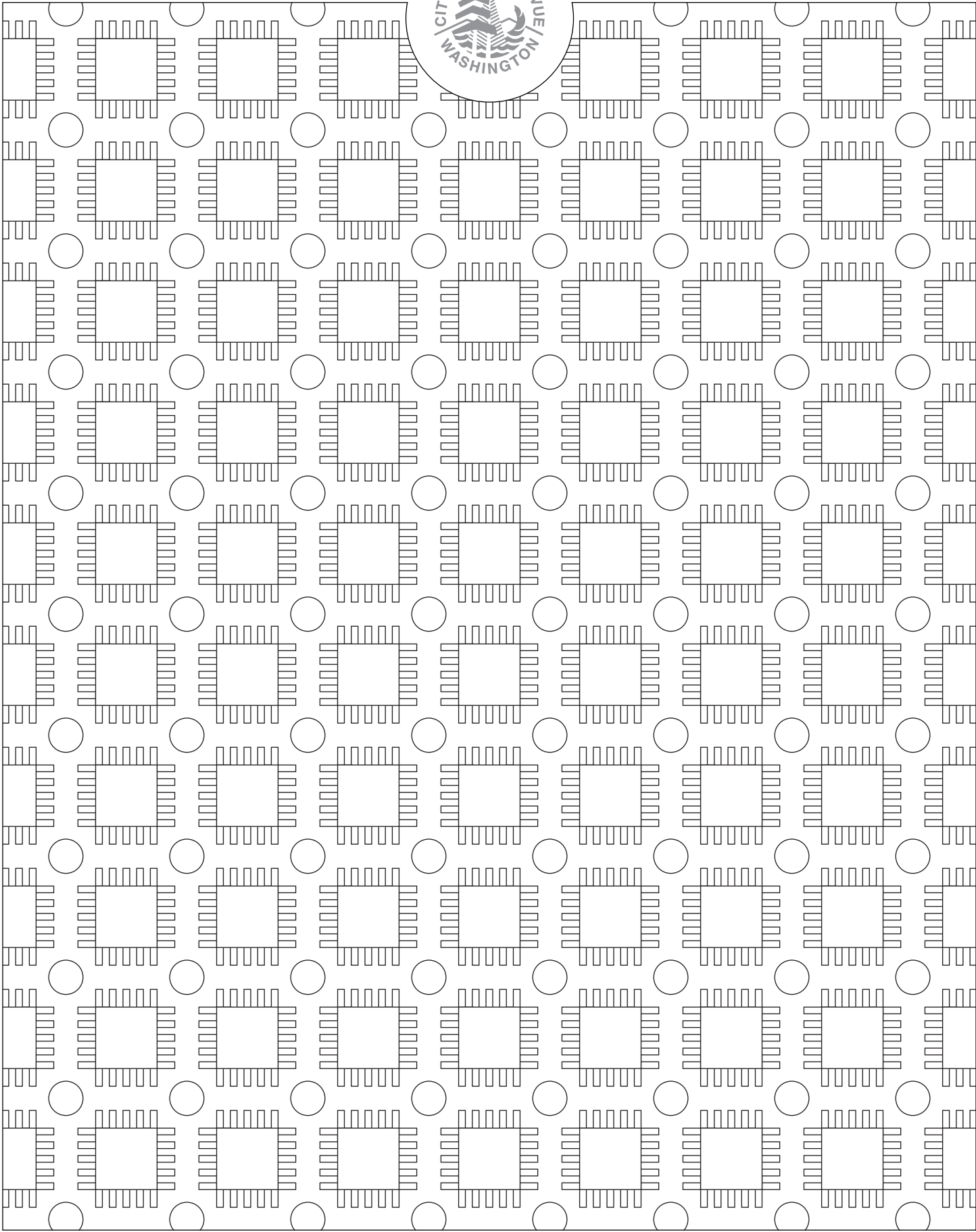
Mercer Slough bridge



Pattern design © Marsha Rollinger | marsharollinger.com

**FULL REPEAT TILE OF MAIN PATTERN WITH
COLORS HIGHLIGHTING INSPIRED SHAPES**







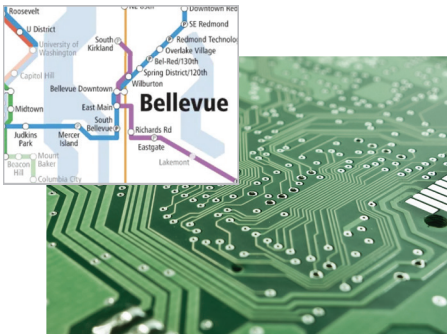
Pattern Design Set #2. - *Past Present*

This design has a more "organic" feel, that pays homage to Bellevue's natural spaces and farming history while still incorporating tech elements in the layout.

There are flowers, leaves, and water ripples incorporated into the designs that represent the parks, green spaces, and waterways within Bellevue.



Boating on the Mercer Slough and other waterways in Bellevue

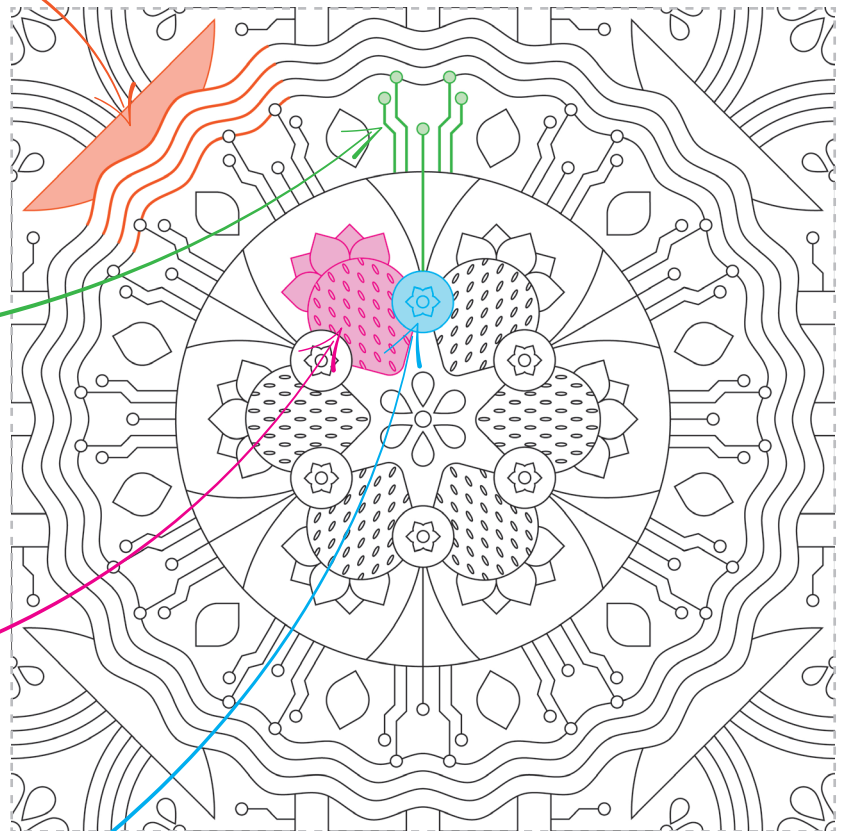


Nodes on the light rail map and traces and vias on a circuit board



Strawberries and blueberries from farms located in Bellevue

Pattern design © Marsha Rollinger | marsharollinger.com



FULL REPEAT TILE OF MAIN PATTERN WITH COLORS HIGHLIGHTING INSPIRED ELEMENTS

