

Photo courtesy of HNTB

2021 State Legislative Agenda

Growth, Economic Vitality and Recovering from COVID-19: Bellevue has experienced exponential growth over the last several years which is expected to continue with another 30,000 jobs expected by 2025. The economic vitality of Bellevue and the Eastside of Lake Washington provides an excellent return on investment for the regional and the state economy. Continued infrastructure investments by the state are urgently needed and are critical to sustain this growth and economic vitality. Bellevue supports state incentives for partnerships that advance transportation and other critical infrastructure projects and urges the Legislature to eliminate barriers to partnerships, including restrictions on the use of state land.

Small businesses and micro-businesses throughout the state, including Bellevue, are struggling as a result of the COVID-19 pandemic. The City urges the Legislature to adopt a statewide economic recovery strategy that includes additional financial support for businesses and new economic tools, such as tax increment financing and public-private partnerships. The City supports additional resources to ensure childcare providers and school districts can safely reopen. The City requests that the state preserve and increase city state-shared revenues and provide greater flexibility to cities through the pandemic and the recovery from the pandemic.

Social and Criminal Justice: Implicit bias and racism exist throughout our society. Bellevue recognizes the need to address racism and implicit bias and supports systemic reforms that are timely, reasonable and effective. Specifically, the City supports proposals that address reforms in the criminal justice system that bring equity to our institutional practices and provide greater safety for communities that have been historically

harmed by racism and implicit bias. The City supports efforts to fill gaps in existing local public safety response, including enhanced professional mental health services and other social support services. Bellevue supports state funding to augment locally funded programs that build community capacity to address racial equity and inclusion initiatives such as the City of Bellevue's Diversity Advantage Plan, Communities of Color Program and the Cross-Cultural Center Project.

Transportation Investments: The strength of our region's economy depends on a multimodal, well-integrated, and well-performing transportation network to reliably move people and goods within and between job centers. In 2019, the Legislature authorized tolling and the bonding of toll revenue on the entire I-405/SR 167 corridor to generate funds to continue implementation of the I-405 Master Plan and fund much-needed improvements on this critical transportation route. Bellevue encourages the state to honor its commitment to make these improvements in a timely manner to ensure that the planned bus rapid transit service can be constructed on this vital corridor.

Bellevue encourages the state to adopt a transportation revenue package to fund new projects and maintenance and preservation of the state and local system. The City encourages the state to identify a stable revenue source that accounts for emerging smart technologies such as autonomous vehicles, and the impact of our transportation system on climate and the environment. The City of Bellevue joins with the Bellevue Chamber of Commerce to request funding for the following projects:

Key Capacity Improvements

- **SR 520/124th Ave NE Interchange:** The SR 520/124th interchange is one of the most congested and

unsafe in East King County. Improvements to this interchange will reduce congestion, improve safety and provide access to the Spring District – an urban neighborhood and job center with connections to light rail and regional trails. Preliminary engineering and right-of-way acquisition are funded and underway. \$175 million is needed to fund the project.

- **I-405 Access to Downtown Bellevue:** In order to decrease traffic congestion and provide greater access into the City, a direct connection is needed from I-405 into Downtown Bellevue south of NE 4th street. Funding is needed to move the project to design and construction of the preferred alternative.

Multimodal Improvements

- **Mountains to Sound Greenway Trail - \$6.9 million next phase:** This non-motorized 100-mile long trail along I-90 stretches from the Seattle Waterfront to Ellensburg. It features a regional trail network used by pedestrians and bicyclists for recreation and transportation. The “Bellevue Gap” is a 3.6-mile trail segment between Factoria Boulevard and Lakemont Boulevard. The next phase to close this gap is a \$33.9 million overcrossing from I-405 to 150th Avenue. Approximately \$27 million in local, state, and federal funds is committed for the overcrossing, leaving a \$6.9 million shortfall. The remaining amount needed to fully complete the Bellevue Gap is \$36.5 million.
- **Eastrail - \$18 million:** The Eastrail will be an uninterrupted 42-mile multi-use trail from Renton into Snohomish County along a former BNSF rail right-of-way. Once completed, this multi-use trail will provide pedestrians and bicyclists 42 miles of uninterrupted trail and direct access to East Link light rail. The following investments are needed to complete the trail through Bellevue:
 - \$5.5 million for the Wilburton Trestle
 - \$10 million for the I-90 Steel Bridge
 - \$2.5 million SE 5th to NE 6th

Planning for the Future

- **I-405/SR 520 Interchange Improvements:** To maximize significant investments in the SR 520 and I-405 corridors, system-to-system connection is needed to relieve a significant congestion point where I-405 and SR 520 intersect. Funding is needed for design that will link the eastbound SR 520 HOV lanes to the I-405 express toll lanes to keep transit moving, improve safety and access to one of the fastest growing areas of Bellevue and the region.

- **I-405/I-90 Interchange Improvements:** Congestion on I-405 at the I-90 interchange is a regional choke point that creates significant safety issues, slows transit and vehicle traffic at all hours. Funding is needed to design direct access from the north and southbound ramps that connect eastbound traffic off I-90 onto I-405. The design will enable future improvements and identify the most cost-effective means of improving safety, reducing congestion and keeping all modes moving through this area.

Affordable Housing, Homelessness and Human Services:

The City supports increased assistance to mitigate the impacts of the eviction moratorium on tenants, landlords and homeowners as a result of lost income due to the impacts of the COVID-19 pandemic. The City supports efforts to provide funding and funding tools to construct and/or preserve affordable housing units and housing for people experiencing homelessness, with a focus on a broad array of income levels, including very low-income and workforce housing.

As the state balances its budget, the City opposes cuts to programs that serve our most vulnerable populations, including funding for treatment and prevention programs that focus on the root causes of homelessness, mental and behavioral health services, addiction, domestic violence, diversion programs such as community courts to keep people out of the criminal justice system and re-entry programs for previously incarcerated people.

Climate and the Environment: The City supports policies and investments to reduce greenhouse gas emissions and improve environmental health, including reducing carbon emissions, implementing energy-efficient building codes, funding electric vehicle infrastructure, reducing the waste stream, and advancing habitat restoration. Bellevue will advocate for a balanced approach that ensures consistency with the City's Environmental Stewardship Plan, other policy goals and does not harm people already negatively impacted by the pandemic. The City supports state proposals that include funding for local governments to implement environmental stewardship actions that move the dial from bold actions to leading edge actions.

Capital Budget Investments: Bellevue recognizes the unprecedented impacts of the COVID-19 pandemic and the need for the state to prioritize capital investments that respond to this crisis and reinvest in our economy. Given these capital funding priorities, the City requests \$2 million in matching funds for acquisition of a property to provide single-room-type shelter to serve our most vulnerable people experiencing homelessness.

In addition to funding investments in facilities to serve vulnerable populations, the City requests support for funding in two Washington Wildlife and Recreation Programs (WWRP) where Bellevue projects scored well:

Washington Wildlife and Recreation

Program: The City of Bellevue supports continued investments in the Washington Wildlife Recreation Program (WWRP), including:

- **WWRP Water Access Category:** Bellevue is ranked 5th to receive a \$1.8 million grant to buy a half-acre on the western shore of Lake Sammamish. The land connects to 1.2 acres of undeveloped, city-owned land on the lake. This is part of a larger project to build Bellevue's first park on Lake Sammamish, which is surrounded by mostly private land with limited public access points.
- **WWRP Trails Category:** Bellevue is ranked 13th to receive a \$1.18 million grant to develop 665-feet of trail along the eastern edge of Mercer Slough, to connect the Mountains to Sound Trail to a ramp to the Eastrail. In addition to connecting regional trails, this project fills a long-standing gap in the Mercer Slough Nature Park internal trail system and is part of the City's Lake to Lake Trail.

Brian Abbott Fish Barrier Removal Board

Program: The City supports investments in the Brian Abbott Fish Barrier Removal Board Program which is proposing funding for 87 local culvert projects in the 2021-2023 budget. Bellevue's project is ranked 71st to receive \$600,000 in planning funds to improve the Coal Creek culvert.

Preserve Fiscal Sustainability and Local

Control: Bellevue strongly urges the Legislature to honor local decision-making authority. The City strongly opposes unfunded mandates and state pre-emption of local authority.

Bellevue supports protecting and enhancing state-shared revenues (e.g. liquor taxes/profits, marijuana revenue sharing as the initiative intended) and retaining programs and authority benefitting local government. The City encourages the state to consider providing additional revenue to local agencies facing revenue shortfalls caused by the COVID-19 pandemic.

Invest in Bellevue

A GREAT RETURN
FOR ALL OF WASHINGTON

↗ **\$1 Billion**
Tax Revenue

Returned to the state
government in 2020 by Bellevue
businesses and residents

\$500 Million
Sales Tax

Second largest producer
of sales tax in the state

\$124 Million
B&O Tax

\$205 Million
**State School
Property Tax**

\$85 Million
REET Tax

INVESTMENT



\$2.3 Billion

total investment in Bellevue's
Spring District, the West Coast's
single largest transit-oriented
redevelopment underway



126,000

workers use the region's multi-
modal transportation network to
commute into Bellevue each day



17 Percent

of Washington's exports are
technology projects from the
Innovation Triangle of
Bellevue-Redmond-Kirkland



For alternate formats, interpreters, or reasonable accommodation requests please phone at least 48 hours in advance 425-452-5265 (voice) or email scovay@bellevuewa.gov. For complaints regarding accommodations, contact City of Bellevue ADA/Title VI Administrator at 425-452-6168 (voice) or email ADATitleVI@bellevuewa.gov. If you are deaf or hard of hearing dial 711. All meetings are wheelchair accessible.

Future Major Projects



FUTURE CAPITAL AND TRANSPORTATION AND PLACE-MAKING FUNDING REQUESTS

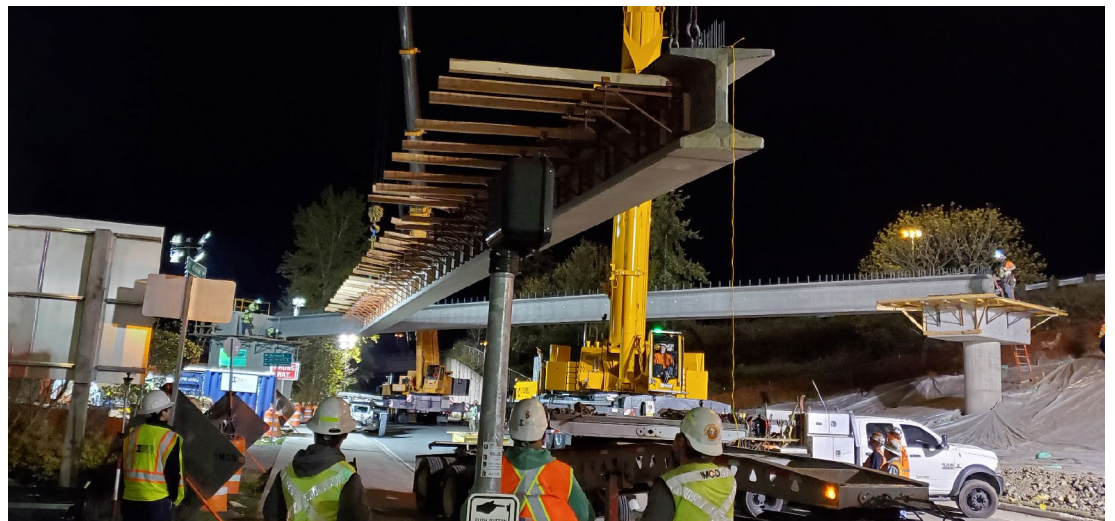
Grand Connection: One of Bellevue's highest priorities is a once-in-a-lifetime opportunity to provide a transformative connection from Meydenbauer Bay Park on Lake Washington through Downtown across I-405 to light rail, the Eastrail Corridor, the BelRed and Wilburton Development Districts.

The vision for this multi-modal connection is about moving people, fostering economic development, arts and culture and creating public spaces for residents, businesses, workers and visitors to enjoy. In 2021, the City will work to refine a design and meet with local, regional, state and federal partners to make the Grand Connection a reality.

Regional Aquatics Center: The legacy swimming pools in East King County funded by Forward Thrust in the 1970's have reached the end of their useful life. Bellevue is exploring opportunities to partner with King County, surrounding cities, Bellevue College and the Bellevue School District to develop a regional aquatics center.

Such a facility could offer swimming classes, water aerobics and water therapy opportunities, provide health, safety and wellness education and host competitive events. The City and potential partners will be meeting with legislators to discuss potential future funding opportunities for this.

Cross-Cultural Center: About half of Bellevue's 150,000 residents identify as a person of color. For many years, Bellevue's Diversity Advantage Initiative and Diversity Advisory Network have implemented cross-cultural programming to better connect with and support a diverse community. One of the City Council priorities adopted in 2018 focuses on "achieving human potential" and increasing access to multi-cultural programming. An extensive public outreach effort assessed residents' values, concerns and aspirations for cross-cultural programs, revealing that existing opportunities were effective for those who participated. That input led the city to begin exploring the feasibility of creating public and private gathering spaces dedicated to cross-cultural programming and services. The city is now formally investigating options to acquire or construct a Cross-Cultural Center to support the increasing demand for places to gather, celebrate culture and diversity, and inspire residents to foster a welcoming and inclusive community. As Bellevue finalizes options and enlists partners, Bellevue may request state funding assistance to make this facility a reality.



For alternate formats, interpreters, or reasonable accommodation requests please phone at least 48 hours in advance 425-452-5265 (voice) or email scovay@bellevuewa.gov. For complaints regarding accommodations, contact City of Bellevue ADA/Title VI Administrator at 425-452-6168 (voice) or email ADATitleVI@bellevuewa.gov. If you are deaf or hard of hearing dial 711. All meetings are wheelchair accessible.