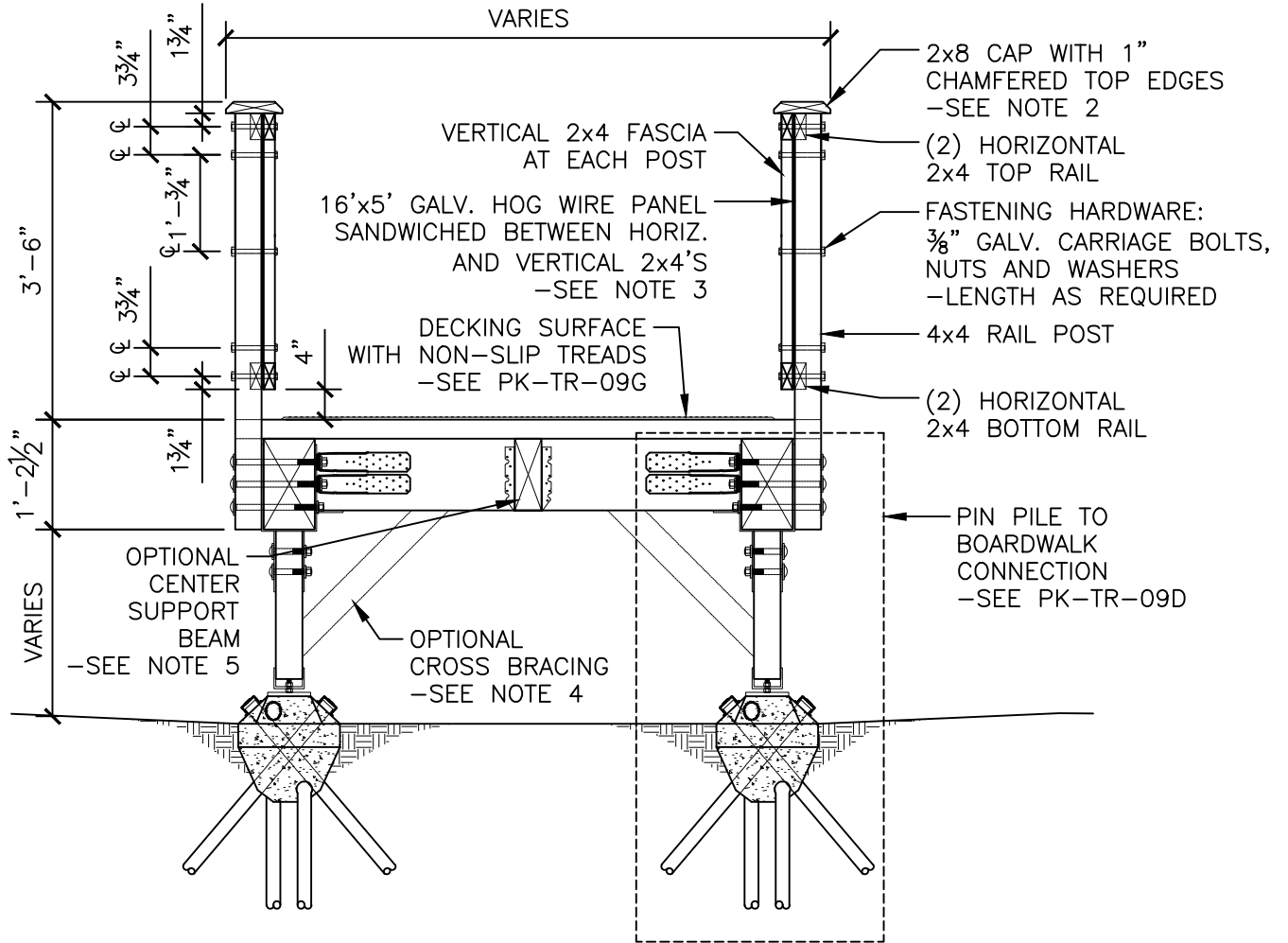


**NOTES:**

1. UNLESS OTHERWISE SPECIFIED, ALL WOOD TO BE D.F. #2 OR BETTER, PT ACQ/CBA, OR APPROVED EQUAL.
2. TOP CAP JOINTS TO BE ALTERNATED WITH 2x4 HORIZONTAL RAIL JOINTS.
3. HOG WIRE PANELS: 0.25" DIA. GALV. ROD WIRING WITH 2x4" MESH OPENINGS.
4. USE 4x4 CROSS BRACING AT BOARDWALK SECTIONS GREATER THAN 2'-6" IN HEIGHT (TYP.). CONNECT TO POST AND FRAME WITH 3/4" DIA. GALV. LAG BOLTS AND WASHERS, RECESSED 1/2", TYP.
5. USE 4x10 CENTER SUPPORT BEAM WHEN WIDTH IS GREATER THAN 6', TYP.



City of  
Bellevue

TITLE:

**TRAIL - FOOTBRIDGE/BOARDWALK - WITH PIN PILE FOOTINGS - SAFETY RAIL OPTION - SECTION**

DRAWING #:	PK-TR-09A
SCALE:	N.T.S.
REVISION DATE:	03-2021
DEPARTMENT:	PARKS