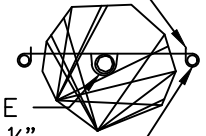


10' LONG ROOT BARRIER AT EDGE OF PLANTER CENTERED ON TREE PER COB STD. DWG. SW-130-1, TYP.

ELECTRICAL LINE, SEE SECTION A

CURB AND GUTTER

PROVIDE 2 SPARE LINKS MIN. TO ALLOW FOR TENSION ADJUSTMENT



USE 2 PIECES OF TIE AND POSITION WITH 1/2" MIN. CLEARANCE ON ALL SIDES OF TRUNK

PLACE STAKES AT ROOTBALL EDGE, TYP.

STAKING PLAN

PLAN

NOTES

1. SEE BELLEVUE ENVIRONMENTAL BEST MANAGEMENT PRACTICES AND DESIGN STANDARD (CURRENT VERSION) FOR TREE SOIL VOLUME REQUIREMENTS AND ADDITIONAL TREE PLANTING GUIDELINES.
2. SEE BELLEVUE LAND USE CODE TABLE 20.25A.110.A.1 PLATE B FOR DOWNTOWN BELLEVUE STREET TREE SPECIES PLAN.
3. 24" MIN. WIDTH STEP OUT ZONE MAY BE REQUIRED WHEN TREE IS ADJACENT TO ON-STREET PARKING.

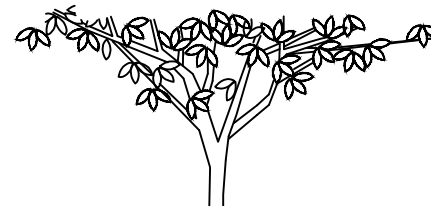
TREE PLANTING PER COB STD. DWG. PK-IM-03A

TOPSOIL AND TOPSOIL PLACEMENT PER COB STD. DWG. SW-130-1, TYP.

ROOT BARRIER PER PLAN AND COB STD. DWG. SW-130-1, TYP.

EXISTING ROADWAY

SET TREE IN FINAL PLANTING POSITION. CUT AND REMOVE TOP HALF OF BURLAP AND/OR WIRE BASKET, AND REMOVE ALL NON-BIODEGRADABLE MATERIAL PRIOR TO BACKFILLING SOIL, TYP.



IF REQUIRED BY PROJECT ENGINEER, ELECTRIC LINES TO BE HOUSE IN FLEXIBLE ARMORED CABLE WITH MINIMUM 24" SLACK

SIDEWALK THROUGH JOINT

SCARIFY SIDES OF PLANTING HOLE, TYP.

COMPACT SOIL TO 85% PROCTOR TO PREVENT SETTLING

SECTION A



City of Bellevue

TITLE:

PLANTING - R.O.W. TREE

DRAWING #:	PK-IM-07B
SCALE:	N.T.S.
REVISION DATE:	08-2020
DEPARTMENT:	PARKS



Standard detail revised with support of King Conservation District