



PSH (PH

CFH (PHASE II)

POLARIS (PHASE I)

INITIAL GNAAC RECOMMENDATIONS AND SAFETY AND SECURITY DISCUSSION

13620 SE Eastgate Way

GNAAC Meeting #3

June 23, 2021

6:00 PM



GNAAC Recommendations – Meeting #2

GNAAC RECOMMENDATIONS TO Conditional Use Permit Recommendation

1. Signage: No loitering, no derelict vehicles
2. Parking monitoring in the lots to address issues with abandoned vehicles
3. Specific review of overflow and self-referral process of CFH
4. Length of time for data storage of security cameras
5. Blue lights on building campus with direct line to emergency services
6. Review parking lot for clear visibility through the site
7. Create consistency with campus wide Transportation Management Plan (TMP)

GNAAC RECOMMENDATIONS FOR FUTURE STUDY AND ACTION BY OTHERS

1. Increased lighting on SE 32ND Street – Transportation Department - Lighting Analysis
2. Continuous sidewalk to Richards Road – Transportation Department – TFP – Project 247
3. Bike lanes review for safety analyses– Transportation Department – Review and analyses during Master Development Plan project review – Meeting standards

GNAAC RECOMMENDATIONS PREVIOUSLY EVALUATED WITH MDP

1. City revisit the traffic estimates and come up with action to minimize impact - Reviewed with traffic study and analyses during MDP, all phases were found to comply with standard requirements.
2. Neighborhood outreach on safety and traffic – Public meetings held to gain input during the MDP process
3. Traffic – At peak times, limit the left turn capability coming out of the facility (not) onto Eastgate create a Center lane – Reviewed possibility during MDP analyses, traffic conditions did not warrant required left turn lane
 - Opportunity to reassess the area if safety concerns arise in the future as the City reserves the right to control access and restrictions on City streets.
4. Secure and tall fences on the boundary of SE 32nd - Was not required through MDP, no direct access to SE 32nd Street from the site



Presentation by Congregations for the Homeless

LINDA HALL



RESPECT

INTEGRITY

SERVICE

Safety and Security Discussion

CFH EASTGATE



OVERVIEW

CFH Client Focus

- Bringing In vs Keeping Out / Low Barrier Shelter
- Maintain Safety and Support Culture
- Behavior Based Conduct
- **Code of Conduct**
 - Drugs, Alcohol, Weapons - Prohibited
 - Progressive “Discipline”
 - Verbal Reinforcement to Banning from Shelter
 - CFH will Trespass and Does Prosecute
- **Facility / Magnet Areas**
 - 25-1 Staff Ratio / 30-minute Rounds
 - Magnet Areas – Within 1 Walking Mile

OVERVIEW

Magnet Areas

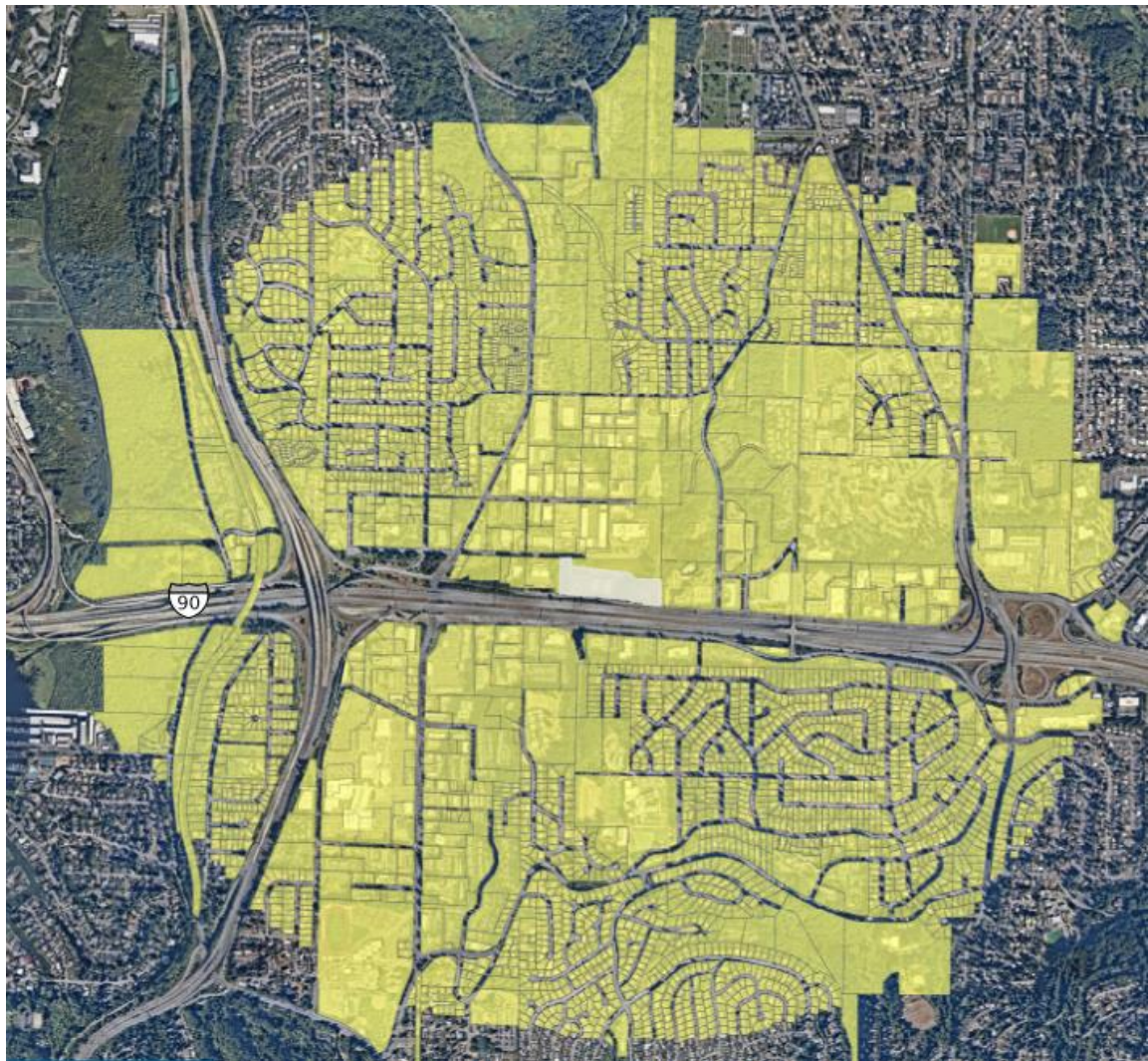
- Camping Out and Aggressive Panhandling
 - Within 1-mile Walking Distance to Shelter
- Identify Shelter Residents Involved
 - Potential Loss of access to shelter and services

Denial of Services

- Lack of Space, Prior Behaviors, etc.
- Provided bus ticket and list of other resources

BPD Notification

- Life Safety Concern for Client or to Wider Community



One Mile Radius

CFH SITE

REGISTERED SEX OFFENDER (RSO) REQUIREMENTS

No Radius Requirements

- Unless on Probation (DOC Set Conditions)

Reporting Requirements

- Level 1 (12 months) / Level 2 (6 months) / Level 3 (3 months)
- Frequency Adjustment
 - Focus on maintaining balance

RSO's in Bellevue

- 81 Total (2021)
 - 4 registered at shelter on 116th Ave NE
 - 5 registered as Homeless in Bellevue

REGISTERED SEX OFFENDER CONCERNS

CFH Responsibilities

- Check King County Registry (Level 2 and Level 3 only)
- Ensure Maintain Compliance with Registry Requirements
- Staff Cooperate with Fail to Register Cases

CFH RSO's

- Accountability / Access to Services
 - Contact Point for RSO Detective

Homeless RSO's

- Less Accountability
 - Check In Weekly in Seattle with KSCO Deputy (County-wide Responsibilities)

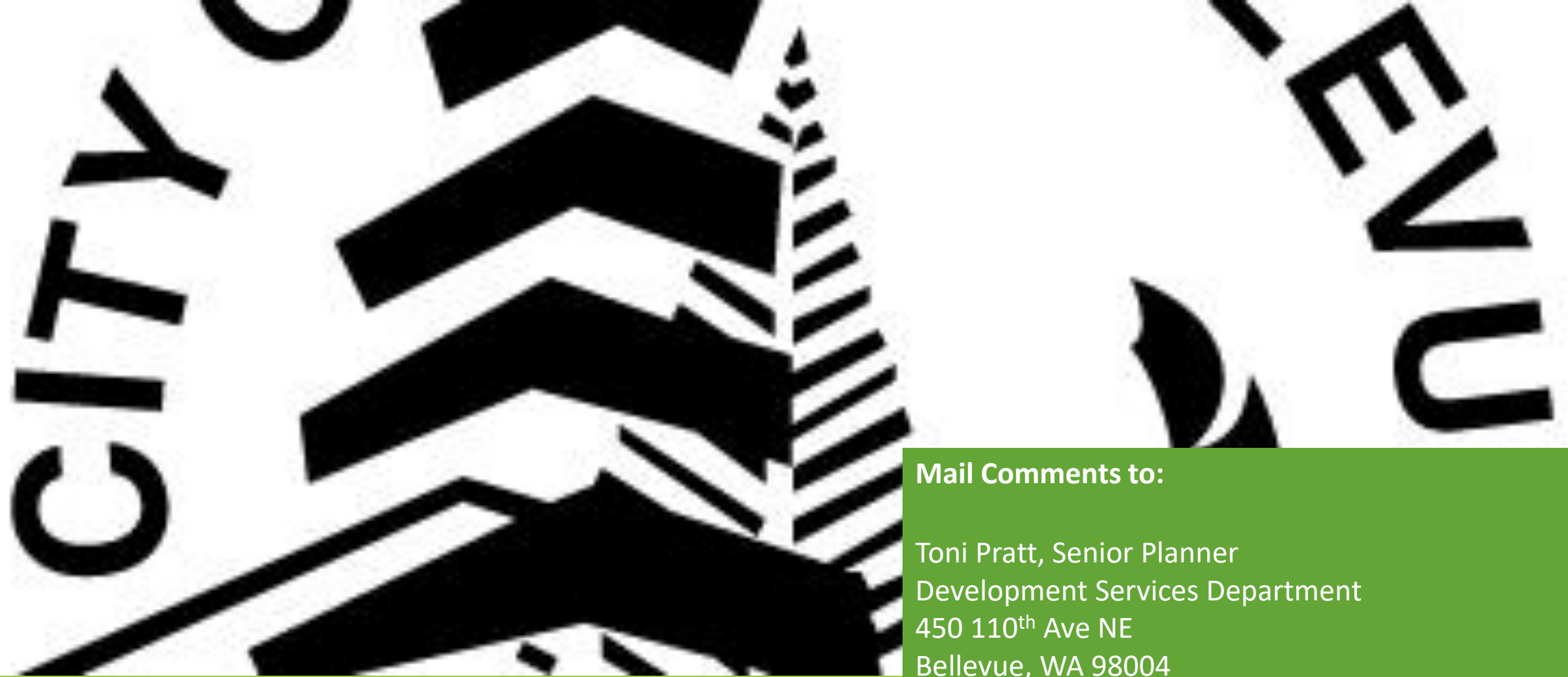
FOLLOW UP

Meet and Confer Memorandum

- Still in Development
 - GNAAC Recommendations
 - Access Routes / Staging
 - Establish Lockdown / Lockout Procedures

Establish Schedule BPD / CFH Meetings

- South Sector Captain / Factoria Sub Station Officer
- Review Incidents / Identify Issues / Coordinate Responses



Mail Comments to:

Toni Pratt, Senior Planner
Development Services Department
450 110th Ave NE
Bellevue, WA 98004

Or

tpratt@bellevuewa.gov