

# neighborhood news



November 2021

news for and about  
Bellevue neighborhoods

## Police volunteer program resumes; applications are available.



The Bellevue Police Department's award-winning Community and Police in Partnership Volunteer Program is restarting after a 20-month hiatus due to COVID-19 restrictions. If you are looking for an opportunity to serve your community, BPD would like to hear from you.

Some volunteer jobs include staffing the police substations, disabled and fire lane parking enforcement, vehicle maintenance coordination, bicycle recovery, event ambassadors and more.

At the beginning of the pandemic, the department suspended the volunteer program to protect



the health of volunteers and the public, which included closing the police substations in Crossroads and Factoria. The police

department is continuing to take precautions to ensure a safe return.

"Our volunteers are incredibly important to the operation of the Bellevue Police Department," stated Major Andrew Popochock, who oversees the program. "The volunteers allow our officers to better serve and protect the public



by lessening the workload and allowing officers to focus on primary policing duties."

The volunteer program is designed for both long-term and short-term commitments and requires candidates to undergo a rigorous application and screening process. Candidates will be considered for specific assignments based on their qualifications, interests and availability.

If you are interested in joining the Community and Police in Partnership Volunteer program or for more information, please visit the Bellevue Police Department ([bellevuewa.gov/city-government/departments/police/about-police/police-jobs/volunteer](https://bellevuewa.gov/city-government/departments/police/about-police/police-jobs/volunteer)), or contact the Police Department Volunteer Coordinator, Nicole Bells at [nbells@bellevuewa.gov](mailto:nbells@bellevuewa.gov).



For alternate formats, interpreters, or reasonable accommodation requests please phone at least 48 hours in advance 425-452-2735 (voice) or email [mheilman@bellevuewa.gov](mailto:mheilman@bellevuewa.gov). For complaints regarding accommodations, contact City of Bellevue ADA/Title VI Administrator at 425-452-6168 (voice) or email [ADATitleVI@bellevuewa.gov](mailto:ADATitleVI@bellevuewa.gov). If you are deaf or hard of hearing dial 711. All meetings are wheelchair accessible.

Subscribe to Neighborhood News electronically:  
[BellevueWA.gov/neighborhood-news](https://BellevueWA.gov/neighborhood-news)

## Free master naturalist training

Do you have a passion for the environment and Bellevue's parks, trails and open space? Applications are being accepted for a free master naturalist training program, designed to develop a group of dedicated volunteers



Continued on next page



trained in environmental awareness and stewardship.

The training, open to adults, is Feb. 24 to April 28. Virtual classes are on Tuesdays and Thursdays, 6-8 p.m. with four in-person outdoor sessions. The program is free with a volunteer commitment of 100 hours of service.

Ideal candidates will have an enthusiasm for learning and a passion for the outdoors. Bellevue residents will have priority for selection, but residents of other cities will be considered if space allows.

Packets must be postmarked by Nov. 30. To apply, complete and return by mail an application packet available at: [BellevueWA.gov/city-government/departments/parks/nature-and-environment/visitor-centers-environmental-programs/environmental-stewardship-volunteer-opportunities/master-naturalist-training-program](http://BellevueWA.gov/city-government/departments/parks/nature-and-environment/visitor-centers-environmental-programs/environmental-stewardship-volunteer-opportunities/master-naturalist-training-program).

## Virtual Cultural Conversations “Going Home During Time of Pandemic”

Tuesday, Nov. 16, 1-2:30 p.m.

Cultural Conversations presents “Going Home During Time of Pandemic,” Nov. 16, 1-2:30 p.m.

Joining us will be a panel of women who will share what it is like during the COVID-19 pandemic to plan travel to far away homes to connect with loved ones. Those of us who travel have a level of privilege, including financial, time, healthcare access and safety. What if one is presented with a set of different challenges and global barriers to freely enter other countries? What can we learn from these stories and how to support those in our community who cannot make the trip?



Following the presentation and storytelling, we invite you to share your story in small group conversation.

Cultural Conversations, in its twelfth season, has transformed relationships and perspectives among diverse women in our community through education and storytelling.

For more information, to register and any accommodation needs, please contact [neighborhoodoutreach@bellevuewa.gov](mailto:neighborhoodoutreach@bellevuewa.gov) or 452-452-6836.

For alternate formats, interpreters, or reasonable accommodation requests please phone at least 48 hours in advance 425-452-6917 (voice) or email [cross@bellevuewa.gov](mailto:cross@bellevuewa.gov). For complaints regarding accommodations, contact City of Bellevue ADA/ Title VI Administrator at 425-452-6168 (voice). If you are deaf or hard of hearing dial 711. All meetings are wheelchair accessible.

---

## “Foundations” series provides free help for hopeful entrepreneurs

# STARTUP425

Have you ever dreamed of starting your own business but don't know where to begin? Startup425's free fall Foundations series can help!

Foundations continues with the sessions listed below, and is meant to provide you with the basic building blocks you need to start forming the structure of your small business. Foundations is brought to you by Startup425, the King County Library System and SCORE Greater Seattle, a nonprofit dedicated to business mentorship. The classes are held over five consecutive Tuesdays, covering a variety of topics, each presented by local specialists and subject matter experts.

### Fall Foundations Schedule

Tuesday, Nov. 2, 6-7 p.m.:

“Understanding How Marketing Can Help You Launch Your Small Business”

Tuesday, Nov. 9, 6-7 p.m.:

“Small Business Finance”

Tuesday, Nov. 16, 6-7 p.m.:

“Risk Management and Cybersecurity”

Classes are held online through Zoom, and are free to attend. Participants will exit the series with the skills and tools necessary to start or grow a business, including information on developing business plans and strategies, pitching to financial partners, marketing a product or service, and how to best protect your business against cyberthreats.

For more about the Foundations series, please visit the Startup425 website:

[startup425.org/programs/foundations](https://startup425.org/programs/foundations)



## **Parks, trails and open space: What are your big ideas?**

The Parks and Community Services Department is updating the Parks and Open Space System Plan. The plan contains the big ideas for parks, trails, and open space citywide developed through input from the city and community members. Many of the Bellevue parks and trails that we enjoy and treasure today started as ideas in the Parks Plan.

Residents and park users are encouraged to provide input on how they use the park system and what they would like to see in the future by visiting [EngagingBellevue.com](https://EngagingBellevue.com) and completing a survey. The survey is open through Nov. 8, and the data is critical to understanding the interests and trends in our community. The Engaging Bellevue website provides additional ways to share input on the parks system, including identifying ideas on a map or submitting written comments. You may also write to Ryan Walker, Planner, at [rwalker@bellevuewa.gov](mailto:rwalker@bellevuewa.gov) or 425-453-4280.

The Parks Plan provides policy and guidance on the acquisition, development and management of parks and open space citywide. It is also a foundational tool for city capital budgets that fund development of parks. The plan is updated every six years. Public outreach for the 2022 parks plan is happening this fall. The current plan can be found at [BellevueWA.gov/park-plan](https://BellevueWA.gov/park-plan).

Thank you for helping to shape the future of Bellevue's parks and open space!

## **Environmental Stewardship: 711 trees distributed!**

The first annual Trees for Bellevue Tree Giveaway Event was a huge success! The Environmental Stewardship team received over 900



applicants and with our amazing volunteers, we gave away 711 trees to residents and community organizations. We targeted neighborhood areas with lower tree canopy cover using American Forest's Tree Equity Score and provided planting assistance to residents in need. We want to thank our volunteers and our nonprofit partner, 300 Trees, who helped make the event possible. We look forward to continuing this event and living up to Bellevue's motto of being a "City in a Park."



The tree giveaway is part of the updated Environmental Stewardship Plan which aims to increase canopy cover in the city and achieve our 40% tree canopy goal by 2050. To achieve this goal, we need to plant about 75,000 trees over the next 30 years, or one tree per Bellevue household. Residential private lots, with over 70% of possible planting space, have the most room for much-needed, new trees. We started this program to encourage planting and to make it easier for people who want a tree but would otherwise not plant a new tree. Our households, neighbors and the whole city benefit when we increase canopy cover and we encourage all our residents to apply for trees in the future.

Tree recipients also received guidance on how to plant and care for a tree, and how to select a good planting location. More information can be found at [BellevueWA.gov/trees](https://BellevueWA.gov/trees).



*Continued on next page*



*Continued from previous page*

If you have any questions email us at [trees@bellevuewa.gov](mailto:trees@bellevuewa.gov) and consider signing up for our newsletter to receive updates on next year's giveaway, and other opportunities to get involved, such as through the Tree Ambassadors program.

## Holiday Ships Festival

Join Bellevue Parks & Community Services in welcoming the annual Holiday Ships Festival

**Saturday, Dec. 18 at 8:40 p.m.**

**Meydenbauer Bay Park**

**9899 Lake Washington Blvd NE.**

Gather between 8-9:30 p.m. to enjoy a beach fire.



## Vaccine verification required at Bellevue recreation facilities

Visitors to Bellevue's recreation facilities are required to show proof of full COVID-19 vaccination or a negative COVID-19 test result within the last 72 hours, in compliance with Public Health — Seattle & King County regulations. The new rules, which apply to the entire county, went into effect on Oct. 25.

Recreation facilities in Bellevue include community centers, environmental education

visitor centers and the Aaron Education Center at the Bellevue Botanical Garden.

The purpose of the vaccine verification is to keep customers, staff and the community safe as the Delta variant continues to persist in King County.



Close to 94% of eligible Bellevue residents are vaccinated against COVID-19, according to public health data.

Based on the King County Health Officer Order ([kingcounty.gov/depts/health/covid-19/current-guidance/verify.aspx](https://kingcounty.gov/depts/health/covid-19/current-guidance/verify.aspx)), Parks & Community Services recreation facilities must require people ages 12 and older to show proof of full COVID-19 vaccination or a negative test result from the last three days to enter the facility and participate in all indoor programs and activities.

Valid forms of verification include:

- Vaccination card
- Photo of vaccination card
- Record from [MyIRMobile.com](https://MyIRMobile.com)
- Printed record from vaccine provider or [MyIRMobile.com](https://MyIRMobile.com) or
- Negative COVID test taken in the last 72 hours.

More information on the county requirements can be found at [kingcounty.gov/verify](https://kingcounty.gov/verify). For COVID-19 testing locations and resources, visit [kingcounty.gov/covid/sites](https://kingcounty.gov/covid/sites).

## Improvements, open enrollment for Medicare

Thousands of Bellevue residents are enrolled in a federally funded Medicare health insurance plan.

In 2022, Medicare

will offer some service improvements. Enrollees can change their plans during open enrollment, available through Dec. 7.

Improvements to Medicare next year will include:

Expanded access to video and telephone (telehealth) treatment for mental health disorders, including diagnosis and evaluation.

Gradual reduction in patient cost-sharing for treatment provided during colorectal cancer screening tests such as colonoscopies.

Part D and Medicare Advantage (Part C) Plans can have a second "preferred" specialty tier for prescriptions with lower cost-sharing than the existing specialty tier.



Enrollees considering changing plans during open enrollment can go to [Medicare.com](https://www.medicare.com) and select the Health & Drug Plans tab, clicking on "Find health and drug plans," to compare Part D (prescription) plans and Medicare Advantage Plans. Improvements in the plan finder include:

Enrollees will be able to save their lists of preferred (in-network) pharmacies as well as their lists of prescription drugs.

The detail information for Part D and Advantage plans will show preferred pharmacies and out-of-network pharmacies.

If you have questions about accessing the Plan Finder webpage or about Medicare changes in 2022, you can get free, unbiased information from Statewide Health Insurance Benefits Advisors (SHIBA), a program of the state Office of the Insurance Commissioner, sponsored in King County by Solid Ground. Call 1-800-562-6900. Lists of the 2022 Part D Plans for Washington and the 2022 Medicare Advantage Plans for King County are on the SHIBA website ([Insurance.wa.gov/medicare](https://insurance.wa.gov/medicare)).

## Mini City Hall welcomes new community partnership

The Crossroads Mini City Hall (MCH) reopened for limited in-person services this summer after closing its facility temporarily due to the pandemic. Starting in October, the Indian American Community Services of Western Washington (IACSWA), formerly known as India Association of Western Washington (IAWW), joined MCH as a partner to extend services on site for the community.

As one of the longest-serving Indian community-based organizations in the Pacific Northwest, the IACSWA not only supports the Indian American community, their services are open to all, with a goal to foster inclusivity and diversity with every community. Their programs and resources range from rental assistance, women's career services, early childhood education, crisis care, a Youth Leadership Program and much more. These services can be a lifeline for many families, especially those who have struggled during the pandemic.

"We want our community to reach out to us for the wrap-around and emergency assistance services that we have built over decades of community advocacy," said IACSWA Executive Director Lalita Uppala. "Our staff and volunteers are from the community for the community."

IACSWA staff is at the community table in front of MCH every Wednesday, 10 a.m.-3 p.m. Stop by to see their resources and meet their staff who can provide services in English, Hindi, Telugu, Punjabi, Gujarati, Marathi, Tamil and Kannada. The MCH team, along with staff from partner agencies, strive to ensure that residents and the community feel supported, and to advocate for their needs.

Located in the most diverse neighborhood of the Eastside, MCH has been serving the community for more than 25 years at the Crossroads Shopping Center. MCH provides culturally appropriate and linguistically accessible services to the community in English, Hindi, Spanish, Somali, Mandarin Chinese, Cantonese, Russian, Ukrainian and Spanish. MCH is open with limited in-person services on Monday, Wednesday, and Friday, 10 a.m.-12 p.m., and 1-3 p.m. Services are available by phone at 425-452-2800 and email [minich@bellevuewa.gov](mailto:minich@bellevuewa.gov), 10 a.m.-6 p.m., Monday through Saturday.



## Two information resources published by the City of Bellevue

The city has two publications available that can be helpful in locating city and community resources.

The “Bellevue by the Numbers” calling guide provides contact information for hundreds of Eastside organizations and resources. It is available in six languages and was recently updated in English and Spanish. Bellevue by the Numbers is available in electronic form at Bellevue by the Numbers, City of Bellevue ([BellevueWA.gov/resident-resources/bellevue-by-the-numbers](https://BellevueWA.gov/resident-resources/bellevue-by-the-numbers)).

The alphabetical guide is a handy reference for services provided by the city and local nonprofit organizations. The guide has listings for categories such as education, health and medical, housing, immigrant assistance, permits, community services and public transportation.

Bellevue’s newcomer’s guide, “Welcome to Bellevue,” is a new condensed guide with links to key services, information, and resources to help newcomers get familiarized and comfortable with their new home! It introduces newcomers to our schools, parks and recreation, businesses, neighborhoods, city government and more. The online version can be found at Newcomers Guide,

City of Bellevue ([BellevueWA.gov/resident-resources/newcomers-guide](https://BellevueWA.gov/resident-resources/newcomers-guide)) A printed version is available in English, Spanish and Chinese.

Printed copies of both “Bellevue by the Numbers” and “Welcome to Bellevue” can be picked up at Service First on the first floor of City Hall, at Mini City Hall in the Crossroads Shopping Center and at the North Bellevue, South Bellevue and Crossroads community centers.

---

## Caution: Car prowls usually spike in November

Just in time for the holiday season, car prowlers are working overtime. Every year in November, we see a spike in car prowls as more people are out shopping and enjoying themselves. These thieves are opportunists looking for easy targets. However, there are many things you can do to protect yourself from becoming a victim!

Get into the habit of always removing valuables from your vehicle, both at home and away. The most common items stolen are laptops, GPS devices, cellphones and chargers, stereos, cash, workout bags, and garage door openers. Usually, criminals decide to break into a car only after seeing something of value inside. If they don't see anything worth their time and effort, they often move on.

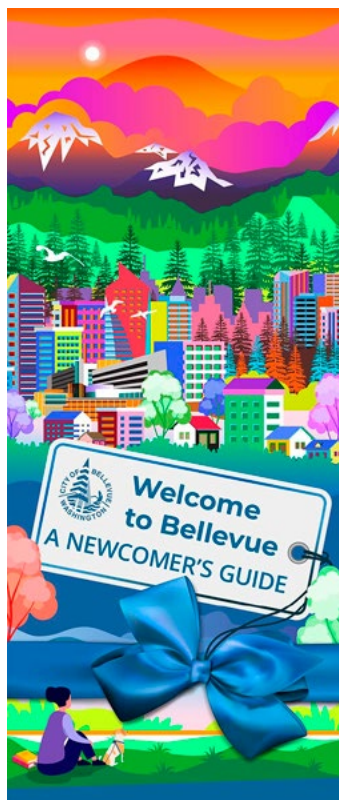
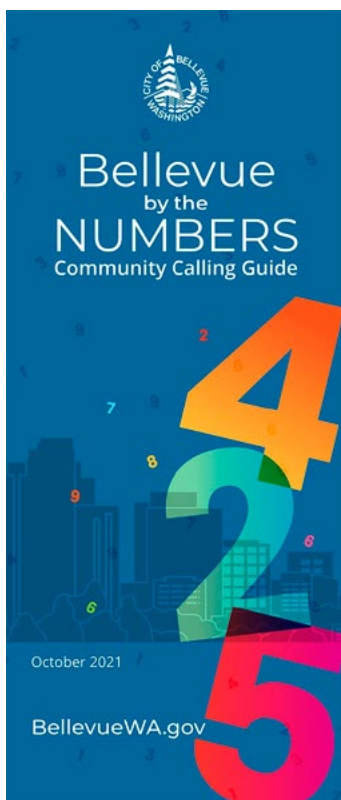
Also, never leave a weapon in your car. So far this year in Bellevue, 20 firearms have been stolen during car prowls.

If you must leave something in your vehicle, such as packages or a backpack, hide it or place it in the trunk before you get to your location. Crooks monitor parking lots and wait to pounce after you've left your car. So, don't make it easy for them.

Remember to always lock your car doors. Just recently, we saw six cars prowled in one night. The suspect entered each car through unlocked doors.

Being prepared and taking a few precautions can help keep you from being a victim. If your car is prowled, be sure to report the crime online: [bellevuewa.gov/city-government/departments/police/report-and-prevent-crime/report-crime-online](https://bellevuewa.gov/city-government/departments/police/report-and-prevent-crime/report-crime-online).

---





# EASTRAIL

## Eastrail taking shape through Wilburton

The Eastrail is a multi-purpose path along a former railroad grade that will total 42 miles from Renton to Snohomish when fully completed.

The seven-mile stretch of Eastrail through Bellevue will be the most urban section of the trail corridor and the city is working with partners to imagine what the trail could look like through the Wilburton neighborhood. One unique aspect of developing the regional trail section through a neighborhood being concurrently developed such as Wilburton is the opportunity to create a sense of place between the trail, public space and the private access points to buildings and businesses along the trail, making Eastrail an integrated piece of the neighborhood plan.

Recent business investments in the project, including \$2.5 million from Facebook, Kaiser Permanente and R.E.I. and a \$7.5 million grant from Amazon to develop the trail over the historic Wilburton Trestle, have provided funding necessary to help complete key segments of the trail in Bellevue.

In coordination with King County, Bellevue has connected with the community about development of the Eastrail through engagements including a virtual walk, survey and public meetings with several stakeholder groups. The early work revealed that residents want to see amenities, activities, public art and performance space along the trail, as well as trees and vegetation with areas for seating and shade. The city will continue to gather public input and collaborate with business partners and other stakeholders as the county develops the framework plan for the trail through the Wilburton neighborhood.

You can learn more about Eastrail at: [kingcounty.gov/services/parks-recreation/parks/trails/regional-trails/popular-trails/eastrail.aspx](https://kingcounty.gov/services/parks-recreation/parks/trails/regional-trails/popular-trails/eastrail.aspx)

## Vehicle traffic count technology evolves

Recently, transportation staff decommissioned the last city-owned, pneumatic road tube counter—used to measure vehicle traffic—which was in the Bellevue Botanical Garden parking lot. Tube counter technology is still used, but the city contracts this work out because it's more cost effective and because newer counting technologies are rapidly evolving.

Since the 1980s, the black, hose-like tube counters that are stretched across lanes of traffic and connected to a power source have been used in Bellevue to capture both traffic volume and speed data. The numbers generated are used by the city's modeling and analysis group to predict future transportation demand. Transportation engineers also use the data to help determine whether new traffic signals are needed and to monitor system performance.

At one time, about 160 locations were monitored using 31 counters, and each location was counted three times per year. Staff would place, maintain, monitor and pick up the units, then download the data. An early generation of counters was powered by batteries only; later models were solar-powered. Today, the technology is improving and data from newer counters can be retrieved remotely or collected without the need for tubes.



*Continued on next page*

*Continued from previous page*

While counting traffic remains an important way to monitor the system, Bellevue's Transportation Department has expanded its traffic counting toolkit, as well as the types of transportation modes it measures. Newer ways of tracking include:

- Loop detectors, buried in the pavement at signalized intersections, that detect vehicle traffic volume.
- Specialized, in-pavement detectors along multiuse paths or bike lanes, that count bicycles.

- Traffic cameras that are used in the city's video analytics program to collect volume data but also classify different types of road users—such as cars, trucks, bikes and pedestrians—provide information on speed, and identify near-miss collisions.

For more detail on ways the city uses traffic counting data, visit [BellevueWA.gov/city-government/departments/transportation/safety-and-maintenance/traffic-safety/traffic-analysis-reports](https://BellevueWA.gov/city-government/departments/transportation/safety-and-maintenance/traffic-safety/traffic-analysis-reports).

## **“Greetings of peace, dear neighbor”**

*By Farida Hakim, Eastgate resident*

I was first introduced to sunflowers by my previous Eastgate neighbor, Maybin Chisubuka, who created and operates the heavenly space at the Bellevue Urban Garden, 1608 156th Ave. SE. Maybin grew the sunflowers from seeds at his home and brought me one plant each year to blossom forth to share its beauty and good cheer!



In 2007, I began taking photographs and printed them into notecards. In subsequent years, I planted the seeds and they bloomed most profusely in 2020 and 2021. This year, as I walked through my neighborhood and came across signs from the City of Bellevue, which stated “Hate has no home

here,” I thought of a sign which would provide a welcome and spread greetings of peace and connections to our Eastgate neighbors with some of the sunflowers from my garden: “Greetings of peace, dear neighbor!”

If you would like a sign, you may contact Farida at: [faridahakim.com](https://faridahakim.com).





## Boards and Commissions Meetings

As of April 1, no meetings are taking place at City Hall. Stay updated on meetings and cancellations: [BellevueWA.gov](http://BellevueWA.gov)

All meetings are conducted at City Hall unless otherwise noted. Agendas are subject to change. If a holiday occurs on a Monday, please check the updated calendar. Agendas can be downloaded from the city's web pages listed below. Meeting alerts are available through subscribing to the City's Special Meeting Notices page. [BellevueWA.gov/city-government/departments/city-clerks-office/special-meeting-notice](http://BellevueWA.gov/city-government/departments/city-clerks-office/special-meeting-notice)

### Bellevue Diversity Advisory Network

(6 p.m., Bellevue City Hall) Last Tuesday of each month [BellevueWA.gov/city-government/departments/city-managers-office/diversity/bellevue-diversity-advisory-network](http://BellevueWA.gov/city-government/departments/city-managers-office/diversity/bellevue-diversity-advisory-network)

**East Bellevue Community Council** (6:30 p.m., Lake Hills Clubhouse, 15230 Lake Hills Blvd) First Tuesday of each month [BellevueWA.gov/city-government/east-bellevue-community-council](http://BellevueWA.gov/city-government/east-bellevue-community-council)

### Arts Commission

(4:30 p.m., 1E-109) First Tuesday of each month [BellevueWA.gov/city-government/departments/community-development/arts-and-culture/arts-commission](http://BellevueWA.gov/city-government/departments/community-development/arts-and-culture/arts-commission)

### Environmental Services Commission

(6:30 p.m., 1E-113) First Thursday of each month [BellevueWA.gov/city-government/departments/utilities/conservation-and-the-environment/environmental-services-commission](http://BellevueWA.gov/city-government/departments/utilities/conservation-and-the-environment/environmental-services-commission)

**Planning Commission** (6:30 p.m., 1E-113) Second and fourth Wednesday of each month [BellevueWA.gov/city-government/departments/community-development/planning-commission](http://BellevueWA.gov/city-government/departments/community-development/planning-commission)

**Transportation Commission** (6:30 p.m., 1E-113) Second Thursday of each month with fourth Thursday as needed. [BellevueWA.gov/planning/transportation-commission](http://BellevueWA.gov/planning/transportation-commission)

### Human Services Commission

(6 p.m., 1E-113) First and third Tuesday of each month [BellevueWA.gov/city-government/departments/city-clerks-office/boards-and-commissions/human-services-commission](http://BellevueWA.gov/city-government/departments/city-clerks-office/boards-and-commissions/human-services-commission)

### LEOFF 1 Disability Board

(6 p.m., Room 1E-118) First Tuesday of each month [BellevueWA.gov/city-government/departments/human-resources/retirees-former-employees/leoff-1-disability-board](http://BellevueWA.gov/city-government/departments/human-resources/retirees-former-employees/leoff-1-disability-board)

### Library Board

(5p.m., Lake Hills, Bellevue or Newport Way Library) Third Tuesday of each month [BellevueWA.gov/city-government/departments/city-clerks-office/boards-and-commissions/library-board](http://BellevueWA.gov/city-government/departments/city-clerks-office/boards-and-commissions/library-board)

### Parks & Community Services Board

(6 p.m., 1E-113) Second Tuesday of each month [BellevueWA.gov/city-government/departments/city-clerks-office/boards-and-commissions/parks-and-community-services-board](http://BellevueWA.gov/city-government/departments/city-clerks-office/boards-and-commissions/parks-and-community-services-board)

### The Bellevue Network on Aging (BNOA)

8:30 a.m., North Bellevue Community Center 4063 148th Ave NE, Bellevue) First Thursday of each month [BellevueWA.gov/bnoa](http://BellevueWA.gov/bnoa)

### Special Events Committee

(8:30 a.m., 1E-112) Second Thursday of each month [BellevueWA.gov/city-government/departments/city-clerks-office/boards-and-commissions/special-events-committee](http://BellevueWA.gov/city-government/departments/city-clerks-office/boards-and-commissions/special-events-committee)

### Youth Link Board

(6 p.m., 1E-120) Second Wednesday of each month [BellevueWA.gov/city-government/departments/city-clerks-office/boards-and-commissions/youth-link-board](http://BellevueWA.gov/city-government/departments/city-clerks-office/boards-and-commissions/youth-link-board)

Bellevue's Neighborhood Services Division offers a variety of programs and partnerships for neighborhood leaders and active residents. To learn more about citizen involvement opportunities and programs to enhance neighborhoods, please visit our website at: [BellevueWA.gov/city-government/departments/community-development/neighborhoods](http://BellevueWA.gov/city-government/departments/community-development/neighborhoods) or call 425-452-6836 or email: [neighborhoodoutreach@bellevuewa.gov](mailto:neighborhoodoutreach@bellevuewa.gov). To subscribe to this newsletter, visit: [BellevueWA.gov/neighborhood-news](http://BellevueWA.gov/neighborhood-news)

## City Council [Bellevue.Legistar.com/Calendar.aspx](http://Bellevue.Legistar.com/Calendar.aspx)

Day	Scheduled Meeting(s)	Location	Public Comment Opportunity
First four Mondays of each Month, except August and December	6 p.m.  Regular Meeting	Virtual  Bellevue TV channel 21 and BTV YouTube channel <a href="#">youtube.com/user/BellevueWashington</a>	Emails to Council are accepted at <a href="mailto:council@bellevuewa.gov">council@bellevuewa.gov</a> at any time. Further opportunities for public comment are published on each Council agenda and can be found at <a href="http://bellevue.legistar.com/Calendar.aspx">bellevue.legistar.com/Calendar.aspx</a>
August – first Monday only			
December – first and second Mondays only			



Happy  
Thanksgiving