

During the COVID-19 pandemic, the City of Bellevue is doing what it can to help residents remain healthy and support business resiliency through information sharing and relief programs. The city created a number of web pages specifically focusing on COVID-19 Business Resources, Community Resources, a tally of key updates and details on the city's broader response, including city actions, facility hours, key messages from public health officials and government health orders. Our main COVID-19 Response page is available in the following languages:



한국어 [BellevueWA.gov/korean/covid-19](https://www.belleuve.wa.gov/korean/covid-19)



Subscribe to Neighborhood News electronically:
BellevueWA.gov/neighborhood-news



To register for this virtual event, please email
NeighborhoodOutreach@bellevuewa.gov.

A photograph of a modern playground structure. The central feature is a slide with a green upper half and a blue lower half. The slide is part of a larger structure with a blue frame and green panels. To the right of the slide is a set of stairs with blue railings. The entire structure is set on a bed of brown mulch. In the background, there are tall evergreen trees and a cloudy sky. A black tire is visible on the right side of the slide.

Continued on next page

Continued from previous page

During the gathering, Parks staff will share the scope of the department's many assets and services and the purpose of a master Parks Plan. Residents will have opportunity to share their priorities and dreams for the future of the parks system.

Public outreach in a variety of formats for the 2022 Parks Plan is occurring this fall, with adoption of the plan expected in spring 2022.

Additional opportunities for input will occur through the Parks Plan assessment process. The public is encouraged to communicate interests and feedback directly to Parks planner Ryan Walker at rwalker@bellevuewa.gov or 425-453-4280. More information on the available ways to participate and share feedback, as well as project updates, can be found at BellevueWA.gov/park-plan.htm



Neighborhood Enhancement Program Updates for Woodridge and West Bellevue neighborhood areas

Woodridge residents: Vote for your top three project choices. Please return the postage paid ballot each household received in the mail in September. Voting is by mail only and is limited to one ballot per household. Ballots must be postmarked by **Friday, Oct. 22** to be valid. Information on the nine enhancement projects on your ballot can be found on the Woodridge webpage in the Neighborhood Areas section of the NEP website at BellevueWA.gov/nep

West Bellevue residents: Please let us know how you liked the NEP process in your area! You have



four new capital improvement projects that will be coming to the West Bellevue neighborhood area:

1. **Chism Beach Park invasive vegetation removal & native planting**
2. **Street and stair lighting to South Bellevue Light Rail Station:**
SE 28th St between 108th Ave SE and 110th Ave SE;
SE 28th PL east of 110th Ave SE; and
Stairs Lighting from 11400 blk of SE 28th Pl to 2800 blk of 112th Ave SE.
3. **West Bellevue gateway and streetscape improvements**
West Bellevue gateways and median including 108th Ave SE, Bellevue Way SE
4. **Additional benches in Surrey Downs Park**

Please return the postage paid evaluation postcard each household received in the mail last month or submit your comments online using the NEP evaluation form found at BellevueWA.gov/nep

Evaluations must be postmarked or submitted by **Wednesday, Oct. 27.**

The Neighborhood Enhancement Program is a city-funded program that allows residents to propose and select modest, capital projects to enhance their neighborhoods. The program rotates through the city's 14 NEP neighborhood areas, serving two areas each year. The \$5 million program allocation is distributed among each of the NEP neighborhood areas, according to the number of households in each area.

Next on the list for NEP in 2022, are the Newport and Somerset neighborhood areas. Newport will kick off in late January and look for NEP to come to Somerset in early April. To find out which NEP Neighborhood Area you call home, please visit BellevueWA.gov/nep.





Make a difference today!

The Bellevue Network on Aging is an advisory board to the Bellevue Parks & Community Services Department. Their mission: "Dedicated to healthy aging in our community by promoting awareness of needs and resources that support older adults through life's transitions."

Recruitment for new members of the Bellevue Network on Aging who live, work or serve older adults in Bellevue is now underway.

Application deadline is **Friday, Oct. 17.**

Applications and more information can be obtained online at BellevueWA.gov/bnoa or contact Community Services Supervisor Dan Lassiter at dlassiter@bellevuewa.gov or 425-452-4470.

Interviews will be held in October. Member terms are three years on a 15-member board and the monthly time commitment is between eight and 15 hours. The next term begins the first week of Jan. 2022.

Join the Bellevue Network on Aging



Help to pay utility bills through COVID-19

As the COVID-19 pandemic continues, Bellevue Utilities is committed to helping our customers facing financial impacts and difficulty paying utility bills. The Governor's water shut off moratorium is anticipated to end on Sept. 30. However, Bellevue Utilities will continue to suspend water shut offs and late fees for non-payment through Jan. 1, 2022, to allow customers additional time to pay past-due balances or set up payment plans.

We encourage all customers who have or may face a past-due balance to contact us as early as possible about available support options, some of which



are listed below. Other financial assistance programs are listed on the city's COVID-19 Community Resources at BellevueWA.gov/COVID-19-community-resources.

- **Payment Plans:** Utilities staff can help set up flexible payment plans that work with customer needs. Please contact 425-452-6973 or email utilities@bellevuewa.gov to discuss possible payment plan options.
- **Emergency Assistance Program:** This can help cover up to four months of basic water, sewer and drainage service charges for customers who have faced a one-time financial shock, such as job or income loss due to COVID. To be eligible, customers must meet the program's low-income guidelines for the past 30 days and not receive other Utilities financial assistance. For more information and to apply, visit BellevueWA.gov/utility-relief, or contact 425-452-5285 or utilityrelief@bellevuewa.gov.
- **Utility Rate Relief Program:** This program provides a discount on basic utility costs for water, wastewater and drainage to low-income seniors (62 and older) and low-income persons with permanent disabilities. Customers must meet specific residency and income guidelines. Visit BellevueWA.gov/utility-relief or contact 425-452-5285 or utilityrelief@bellevuewa.gov to learn more and apply.
- **NEW! Low-Income Household Water Assistance Program (LIHWAP):** This federal program can provide an additional source of utility assistance for customers who meet the state's low-income guidelines. More information on this program will be available soon on the City's COVID-19 Community Resources page BellevueWA.gov/covid-19.

Tricks and Treats

Creative ideas for a zero-waste Halloween

Need ideas for Halloween crafts and recipes? Try these zero waste tips for eco-friendly fun at home this holiday.



Crafty Tricks

- Build a robot costume from cardboard boxes: Cut a hole in a box that your head can fit through. Decorate box with scrap paper, markers, and bottle caps. Use a smaller box for a hat! **Cardboard boxes are recyclable. Remember to flatten boxes before recycling.**
- Paper Towel Roll Bats: Color paper towel or toilet paper rolls, use a cardboard box or scrap paper to cut out a wing shape. Draw a face and hang by a string! **When you're finished with your bats, the paper and cardboard are recyclable.**

Delicious Treats

- Jack-o-Lantern Stuffed Peppers: Before you stuff peppers with your favorite recipe, carefully cut out a Jack-O-Lantern face! **Zero waste and delicious!**
- Ghost bananas: Cut bananas in half so they stand on the flat end and use chocolate chips for eyes and a mouth. **Banana peels can go in your compost cart!**

Contamination is scary! Remember: it's important to recycle right. Candy wrappers and plastic bags belong in the garbage. Never put plastic in your compost. It's OK to throw it away if it belongs in the garbage! For more zero waste Halloween ideas, visit BellevueWA.gov/recycle-at-home.



Keep Bellevue litter-free!

Our community relies on everyone to do their part to keep our city clean. Litter pollutes waterways, roadways and our environment. Litter is managed differently based on where it is located, the amount of litter and the type of litter. Throughout the pandemic, we have seen a surge in single-use disposable items and garbage being disposed of improperly.

What can you do to keep Bellevue litter-free?

- Set an example! Never let trash escape from your car, and make sure household garbage carts are sealed so that animals cannot get the contents.
- If safe, pick up litter that you see and place it in the garbage. Consider working with your neighbors or homeowners' association to form a litter patrol in your neighborhood.
- Avoid using single-use items when possible. Avoiding disposable items reduces the potential for litter and reduces overall waste!
- Secure your load for safer roads. The Washington Department of Ecology and partners are asking that everyone secure materials in truck beds to prevent litter and avoid traffic accidents.

Working smoke alarms saved a family and their pet's life. They could save yours, too.

In mid-September, Chewie's family awoke in the early morning hours to the sound of their smoke alarms alerting them to a fire in their house. The early notification allowed the family to grab their puppy Chewie and all escape safely and quickly. It may have been a much different outcome had their smoke alarms not been working.

In the United States, three of every five residential fire fatalities occur in homes where no smoke alarms are present (41%) or the ones in place are non-operational (16%). The facts speak for themselves: Working smoke alarms save lives.



However, much like we nurture those we love, we need to also pay attention to our smoke alarms. Fortunately, the care they require is relatively simple.

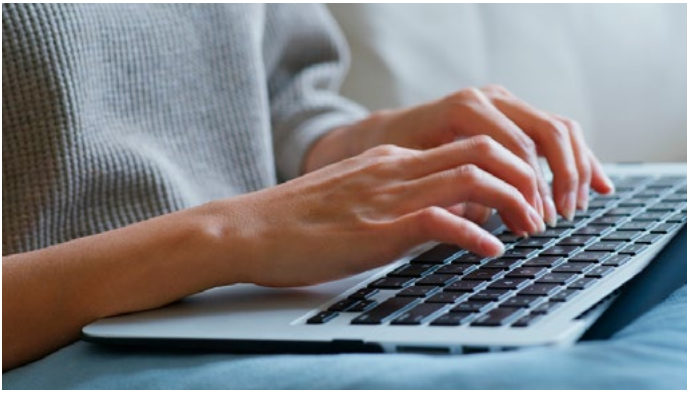
The first step in smoke alarm care is to recognize that nothing lasts forever. All smoke alarms must be replaced every ten years from the date of manufacture. Locating this date is as simple as looking on the back of your smoke alarm. If the date of manufacture is 2011 or before, it's time to get new smoke alarms.

The second important step is testing your smoke alarms monthly. This show of love is as simple as pushing the test button to assure that you hear the beep.

Lastly, make sure that you have at least one smoke alarm on every level of your home. Ideally, smoke alarms should be in every sleeping area, in the hallway outside of bedrooms and near the kitchen. In the kitchen, alarms should be more than 10 feet away from cooking appliances, helping to reduce nuisance alarms, which condition us to not take an activated smoke alarm seriously.

For Chewie and his family, the love and care they showed their smoke alarms saved them all from potential harm, and that's doggone great.





Virtual Permit Center Appointments Available

Development Services is offering Virtual Permit Center appointments for residents and customers with general questions about permits and the permitting process. Instead of traveling to City Hall, customers can schedule virtual, one-on-one meetings with a permit technician or plan reviewer. Visit the Virtual Permit Center page at BellevueWA.gov/virtual-permit-center to learn more and to book an appointment.

More information about permits, the paperless permitting process and how to submit applications and upload plans is available on the Development Services website BellevueWA.gov/development-services

Project concluding to make SR 520 Trail intersections safer for bicyclists

Work is targeted for completion in October on a project to improve bicycle safety on the SR 520 Trail route that runs along city streets in Bellevue.

The improvements are at three busy intersections where people must bicycle on busy city streets – alongside vehicle traffic, rather than on dedicated trail segments just for pedestrians and bicyclists. The improvements will make it safer and more comfortable for riders in these locations. The three areas and a summary of the upgrades are:

- Northup Way and 108th Avenue NE – Restripe Northup to add a high-visibility bike box for westbound bicyclists; and add a westbound-to-northbound right turn pocket for vehicles; reconstruct curb ramps on the south side of Northup Way.

- Northup Way and NE 24th Street – Add bike signal for eastbound riders; repurpose second eastbound lane on Northup Way, underneath the SR 520 bridge; and repurpose second westbound lane to extend the westbound bike lane under the SR 520 bridge.
- 148th Avenue NE and NE 29th Place – Add a bike signal for a new diagonal bike crossing through the intersection.

The work has been a collaboration between the City of Bellevue, City of Redmond and state Department of Transportation. The approximately \$650,000 project was partially funded by Bellevue's voter-approved Neighborhood Safety, Connectivity and Congestion Levy.

Project construction began in spring 2021. Since the trail opened in late 2017, bicycle traffic on the portion of the trail running through Bellevue has increased more than 140%.



Tell us what you think of new greenway project in East Bellevue

The city's first neighborhood greenway opened in early Sept. on 165th and 166th avenues in East Bellevue. The greenway aims to create a safer, more comfortable corridor for people to walk and bicycle through the neighborhood.

Now we want to hear from you about the project. Please respond to a short questionnaire at EngagingBellevue.com/east-bellevue-greenway. Feedback will help determine whether to keep or refine project features and will provide insights for use in planning future greenways. The questionnaire, available in seven languages, takes



5-10 minutes to complete and will be live through January 2022.

The two-mile-long greenway runs from Southeast 14th Street to Northup Way. The “demonstration” aspect refers to quick-build, low-cost treatments that have been temporarily installed. In addition, soliciting community feedback is an important part of the project. Features of the East Bellevue Demonstration Greenway include:

- Bicycle pavement markings to raise awareness about bicyclists in the corridor
- Rapid-build, decorative traffic circles at five intersections
- Stop sign repositioning at key intersections
- Speed reduction to 20 mph from 25 mph
- Wayfinding signs directing people to nearby destinations

Amazon contributes \$7.5 million for Wilburton Trestle, Eastrail upgrades

The Bellevue segment of Eastrail, a regional trail along the Interstate 405 corridor for people who walk and bicycle, got an enormous boost recently with the announcement that Amazon has committed \$7.5 million to King County Parks to rehabilitate the landmark Wilburton Trestle and address a key gap in the trail.

The trestle restoration is a critical component to complete the continuous 42-mile Eastrail system from Renton to Snohomish County, including seven miles that run through Bellevue.

Mayor Lynne Robinson and other officials were on hand Sept. 20 to share the news. In thanking Amazon, Robinson noted the extensive collaboration that has made progress on Eastrail possible.

“This really is about partnerships. It’s about regional partnerships with all the cities along this trail and with King County,” she said. “It’s also about community partnerships. We’ve had contributions from REI, from Facebook, from Kaiser Permanente, and now this very generous one from Amazon.”

Along with funding from King County, which owns and manages much of Eastrail, Amazon’s contribution will be used to preserve and upgrade the 100-year-old, 1,000-foot-long trestle. The 100-foot-tall former railroad bridge features an impressive skyline view of downtown Bellevue that eventually will be accessible to residents, workers and visitors.

“This is kind of the missing link Amazon is putting in place here,” Robinson said. “When you combine it with the Mountains to Sound Greenway Trail, our Lake to Lake Trail, and, ultimately, our Grand Connection, what a tremendous community asset this will be.”





CULTURAL CONVERSATIONS



During the September Welcoming Week Cultural Conversations at Bellevue Botanical Garden, artists and sensei Mrs. Price of Lake Washington Chapter of the Ikenobo Ikebana Society shared the beauty of flowers, the harmony of nature, the environment and the heartfelt expression of beauty and belonging. Participants discussed the concept of home for those who have moved here from across the globe, and what is universal about flowers, gardens, traditions and the connections that they create.

Boards and Commissions Meetings

As of April 1, no meetings are taking place at City Hall. Stay updated on meetings and cancellations: BellevueWA.gov

All meetings are conducted at City Hall unless otherwise noted. Agendas are subject to change. If a holiday occurs on a Monday, please check the updated calendar. Agendas can be downloaded from the city's web pages listed below. Meeting alerts are available through subscribing to the City's Special Meeting Notices page. BellevueWA.gov/city-government/departments/city-clerks-office/special-meeting-notice

Bellevue Diversity Advisory Network

(6 p.m., Bellevue City Hall) Last Tuesday of each month BellevueWA.gov/city-government/departments/city-managers-office/diversity/bellevue-diversity-advisory-network

East Bellevue Community Council (6:30 p.m., Lake Hills Clubhouse, 15230 Lake Hills Blvd) First Tuesday of each month BellevueWA.gov/city-government/east-bellevue-community-council

Arts Commission

(4:30 p.m., 1E-109) First Tuesday of each month BellevueWA.gov/city-government/departments/community-development/arts-and-culture/arts-commission

Environmental Services Commission

(6:30 p.m., 1E-113) First Thursday of each month BellevueWA.gov/city-government/departments/utilities/conservation-and-the-environment/environmental-services-commission

Planning Commission (6:30 p.m., 1E-113) Second and fourth Wednesday of each month BellevueWA.gov/city-government/departments/community-development/planning-commission

Transportation Commission (6:30 p.m., 1E-113) Second Thursday of each month with fourth Thursday as needed. BellevueWA.gov/planning/transportation-commission

Human Services Commission

(6 p.m., 1E-113) First and third Tuesday of each month BellevueWA.gov/city-government/departments/city-clerks-office/boards-and-commissions/human-services-commission

LEOFF 1 Disability Board

(6 p.m., Room 1E-118) First Tuesday of each month BellevueWA.gov/city-government/departments/human-resources/retirees-former-employees/leoff-1-disability-board

Library Board

(5p.m., Lake Hills, Bellevue or Newport Way Library) Third Tuesday of each month BellevueWA.gov/city-government/departments/city-clerks-office/boards-and-commissions/library-board

Parks & Community Services Board

(6 p.m., 1E-113) Second Tuesday of each month BellevueWA.gov/city-government/departments/city-clerks-office/boards-and-commissions/parks-and-community-services-board

The Bellevue Network on Aging (BNOA)

8:30 a.m., North Bellevue Community Center 4063 148th Ave NE, Bellevue) First Thursday of each month BellevueWA.gov/bnoa

Special Events Committee

(8:30 a.m., 1E-112) Second Thursday of each month BellevueWA.gov/city-government/departments/city-clerks-office/boards-and-commissions/special-events-committee

Youth Link Board

(6 p.m., 1E-120) Second Wednesday of each month BellevueWA.gov/city-government/departments/city-clerks-office/boards-and-commissions/youth-link-board

Bellevue's Neighborhood Services Division offers a variety of programs and partnerships for neighborhood leaders and active residents. To learn more about citizen involvement opportunities and programs to enhance neighborhoods, please visit our website at: BellevueWA.gov/city-government/departments/community-development/neighborhoods or call 425-452-6836 or email: neighborhoodoutreach@bellevuewa.gov. To subscribe to this newsletter, visit: BellevueWA.gov/neighborhood-news

City Council Bellevue.Legistar.com/Calendar.aspx

Day	Scheduled Meeting(s)	Location	Public Comment Opportunity
First four Mondays of each Month, except August and December	6 p.m. Regular Meeting	Virtual Bellevue TV channel 21 and BTV YouTube channel youtube.com/user/BellevueWashington	Emails to Council are accepted at council@bellevuewa.gov at any time. Further opportunities for public comment are published on each Council agenda and can be found at bellevue.legistar.com/Calendar.aspx
August – first Monday only			
December – first and second Mondays only			

