

BELLEVUE ARTS COMMISSION



Newly installed BelRed utility box wraps by Marsha Rollinger, Molly Keen, Raili Janese, and Vikram Madan.



Community Development

September 7, 2021
ZOOM MEETING

“The arts are an important expression of how people think of and experience the city and each other. Bellevue seeks to foster a strong arts and cultural community chiefly supported through a wide range of artists, art and cultural institutions, and arts groups offering a variety experiences to an engaged audience.”

-City of Bellevue, Comprehensive Plan, Urban Design & the Arts Element



Community Development

Agenda

Agenda

Tuesday, September 7 2021

Bellevue Arts Commission

Zoom Meeting: 4:30 p.m.

Commission Staff Contact: 425.452.4064

The City of Bellevue Arts Commission meeting for September 7 will be conducted virtually via Zoom Webinar. The public can access the meeting here, <https://cityofbellevue.zoom.us/j/95850191619> using Password: 166336 or by connecting to the Zoom Webinar using Webinar ID: 958 5019 1619 and Password: 166336. For those members of the public unable to access internet services, a telephone option will be made available to listen to the proceedings. The phone number to access the meeting is phone number +1 253 215 8782, Webinar ID: 958 5019 1619 and Password: 166336.

1. **CALL TO ORDER** 4:30
Chair will call the meeting to order.
2. **APPROVAL OF AGENDA AND MINUTES** 4:30 – 4:35
 - A. Chair will ask for approval of the agenda.
 - B. Chair will ask for approval of the June 2021 regular meeting minutes.
3. **ORAL COMMUNICATIONS** 4:35 – 4:45
There will be no opportunity for oral communications at this meeting. All written comments received prior to 3 p.m. on September 7 will be read or summarized into the record at the meeting. If you wish to provide written comment to the Arts Commission, please email mstamm@bellevuewa.gov with the subject line “Written Communications – September 7”.
4. **ACTION, DISCUSSION, AND INFORMATION ITEMS**
 - A. 130th Final Design 4:45 – 5:25
 - B. Downtown Utility Box wraps 5:25 – 5:45
 - C. Bellwether 2021 Review 5:45 – 6:20
5. **COMMISSION QUICK BUSINESS** 6:20 – 6:25
6. **REPORTS** 6:25 – 6:30
 - A. Commissioners’ Committee and Lead Reports
 - B. Project Updates from Staff
8. **ADJOURNMENT** 6:30 pm
Chair will adjourn the meeting.

Bellevue Arts Commission meetings are wheelchair accessible. Captioning, American Sign Language (ASL), or language interpreters are available upon request. Please phone at least 48 hours in advance 425-452-6168 (VOICE) for ADA accommodations. If you are hearing impaired, please dial 711 (TR). Please contact the Arts Program at least two days in advance at mstamm@bellevuewa.gov or call 425-452-4064 if you have questions about accommodations.

ARTS COMMISSION MEMBERS

Maria Lau Hui, Chair

Ashmita Gulati, Vice Chair

Carl Wolfteich

Lydia Aldredge

Judy Gowdy

Monik Martinez

Bhavna Bhargava

COUNCIL LIAISON

John Stokes

STAFF CONTACTS

Manette Stamm, Arts Program Analyst, 425-452-4064

Philly Marsh, Economic Development Manager, 425-452-7909



Community Development

Minutes

BELLEVUE ARTS COMMISSION
REGULAR MEETING
MINUTES

June 1, 2021
4:30 p.m.

Bellevue City Hall
Virtual Meeting

COMMISSIONERS PRESENT: Commissioners Aldredge, Gowdy, Gulati, Lau Hui, Martinez, Wolfteich

COMMISSIONERS ABSENT: None

STAFF PRESENT: Manette Stamm, Philly Marsh, Department of Planning and Community Development

OTHERS PRESENT: Councilmember Stokes; Mike Ogliore, Apryl Battin, Bellevue Downtown Association

RECORDING SECRETARY: Gerry Lindsay

I. CALL TO ORDER

The meeting was called to order at 4:31 p.m. by Commissioner Lau Hui who presided. All Commissioners were present.

2. ELECTION OF OFFICERS

Commissioner Lau Hui nominated herself to serve as chair.

There were no additional nominations.

The nomination of Commissioner Lau Hui to serve as chair carried unanimously.

Commissioner Wolfteich nominated Commissioner Gulati to serve as Vice Chair.

There were no additional nominations.

The nomination of Commissioner Gulati to serve as Vice Chair carried unanimously.

3. APPROVAL OF AGENDA AND MINUTES

A. Approval of Agenda

Motion to approve the agenda was made by Commissioner Martinez. The motion was seconded was by Commissioner Wolfteich and the motion carried unanimously.

B. Approval of Minutes

Motion to approve the May 4, 2021, minutes as submitted was made by Commissioner Aldredge. The motion was seconded was by Commissioner Gulati and the motion carried unanimously.

4. ORAL COMMUNICATIONS – None

5. ACTION ITEMS AND DISCUSSION ITEMS

A. Bellevue Downtown Arts Market Update

Mike Ogliore, Vice President of Events and Operations for the Bellevue Downtown Association, said the 6th Street Fair had been renamed the Bellevue Downtown Arts Market. He also noted that the original name of the event in the 1970s was Funsville and it was comprised of a collection of artists who did not make it into the Bellevue Arts Museum Arts Fair. He introduced his colleague Apryl Battin who oversees marketing and partnerships for the BDA. He said the mission of the BDA is to strengthen the economic and cultural vitality of the Downtown. The organization was established in 1974 and it supports its members with best-in-class advocacy, major community events and strategic programs that help the Downtown area thrive. The last year under the pandemic shifted dramatically away from events and toward a program that elevated and spotlighted local businesses in and around the Downtown core. The BDA helped support the el fresco dining program in Old Bellevue during 2020 and continues to do so in 2021. The organization is excited to get back to in-person events, including the Bellevue Downtown Arts Market.

Continuing, Mr. Ogliore said neither the Bellevue Arts Museum Arts Fair and the 6th Street Fair occurred in 2020. Now in 2021, the Bellevue Arts Museum Arts Fair has elected to hold only a virtual marketplace, though with some in-person experiences occurring over a ten-day to two-week period of time in late July through early August. The Bellevue Downtown Association has chosen to delay what is now called the Bellevue Downtown Arts Market to Labor Day Weekend, September 4 to 6. The event will be once again held in late July in 2022.

Ms. Battin said the decision to update the name to the Bellevue Downtown Arts Market because it feels more inviting than “fair,” which can be interpreted as something very large. The term “market” was chosen to allow for different applications, such as pop-up markets, throughout the year. Additionally, the 6th Street name has had staying power, but the new name will allow for expanding the arts market to other areas in the city. Keeping “Bellevue Downtown” in the title helps to promote the Downtown. She shared with the Commissioners the new colorful and bright logo for the event.

Mr. Ogliore said applications for participants in the event were opened early in the new year and was encouraging to see the number of artists wanting to participate. Artists are excited to have in-person events again. Over 140 applications were received, including from every artist who applied for the cancelled 2020 event and from artists around the country and local artists. With the restrictions that are currently in place, the event footprint will allow for artists along 106th Avenue NE on the Pedestrian Corridor on the north side of the former California Pizza Kitchen, and in the south end of the DOXA church parking lot. With the July 1 reopening, there is the potential that the six-foot buffer between artists booths could be eliminated, which would allow for bringing in another 30 or so artists. The Special Events Committee has vetted and approved the date, time and location of the event, and details are still being worked out with the police and fire departments. It will be interesting as it will be the first time the BDA will be putting on its arts event on Labor Day weekend and without the Bellevue Arts Museum fair going on at the same time. It is anyone’s guess as to how large a crowd will be generated.

The BDA has combined forces in sharing details and planning methods with a handful of other arts fairs around Western Washington. The Downtown Arts Market will occur on the sixth of six consecutive weekends in August and September in various cities. The events are being marketed as opportunities for people to come out and support local artists. Of the 83

artists signed up, more than a quarter are from the greater Eastside. Less than half are from out of state, and all have been juried and ranked based on a number of criteria.

The BDA is excited about the event name change and about being able to hold an in-person event again, and is looking forward to seeing what kind of a draw the event will have. The timing is exciting in that it allows for partnering with the Bellwether event.

Mr. Ogliore noted that the BDA also co-produces the annual Bellevue Family Fourth event at Downtown Park. The organization is holding out its last vestiges of hope that somehow it will be possible to hold the event, but the go/no-go deadline is rapidly approaching. The backup plan would be to possibly delay the fireworks celebration to Labor Day weekend and combine it with the Arts Market event.

Commissioner Gulati asked if there are concrete advertising plans to let the community and surrounding cities know about the Arts Market. Mr. Ogliore said the BDA is a member-based organization with a robust list of members that help promote events throughout the year. He said that resource will be tapped into first and foremost. He reiterated that the BDA is working with other arts events regionally to advertise, and there will be plenty of regional and local promotional postings.

Ms. Battin said a robust campaign is being planned that squares up in part with people returning to the workforce. The event will be promoted in the office towers. A residential outreach is also planned that will include dropping cards off at apartments and condominiums. Connections are being made with small businesses and restaurants around town where posters will be put up. The marketing campaign involves a combination of grass roots actions, paid advertising and trade. Press releases will also be released in the community, and some radio and television coverage is expected given that it will be an in-person event.

Commissioner Wolfteich observed that a significant portion of the event is planned to occur in the DOXA church parking lot. He asked if the redevelopment of that site will cause a conflict. Mr. Ogliore said his first draft of the 2021 Arts Market did not include that location because of the pending redevelopment activity. However, after circling back with the property owner it was learned there will be some delays, and full permission to use the site was given. The property owner has also given permission to utilize any monthly parking spots for artists.

Councilmember Stokes asked about the tie-in with the Bellwether event. Mr. Ogliore said his team is still in talks with Ms. Stamm. He said it is the combination of what has been created with the Heart of Bellevue and the timing of the Arts Market that anticipates supporting each other with marketing and promoting. What it will ultimately look like is yet to be determined. Ms. Stamm added that by coordinating each event can avoid stepping on the other's feet. She agreed that talks between the parties are continuing.

Ms. Battin said the focus has been on the Heart of Bellevue grand celebration, which ties to the Grand Connection, but using the September timeframe as a welcome back campaign. The yellow lanterns will be put up and there will be over 600 of them this year. There will be live music going on every Wednesday during September, and there will be a resident lingo event, most likely at the Bellevue Arts Museum. There are also talks of putting together some fun walking tours.

Commissioner Lau Hui asked if the BDA will be offering subsidies to artists to encourage more participation. Mr. Ogliore said the booth fees across the board have been reduced by just over 30 percent. The DOXA sites have been reduced by almost 50 percent. The artists pay an up-front booth fee to the BDA but nothing else.

B. Utility Box Wraps Final Designs

By way of reminder, Ms. Stamm noted that in April the Commission approved the selection of six artists chosen by a panel to wrap 15 utility boxes in BelRed, primarily along the new portion of NE Spring Boulevard. She said staff worked with the artists in drafting their designs. Box wraps usually are replaced about every ten years. Some of the boxes will be seen from the light rail line.

Ms. Stamm reviewed with the Commissioners the final designs from each of the selected artists Larine Chung, Juiliana Kang Robinson, Marsha Rollinger, Molly Keen, Raili Jänese and Vikram Madan. She noted that each work will include a QR code for people to scan and learn about each artist and the back stories.

The Commissioners were informed that if the designs are approved, staff would begin the process of permitting the work on each box, and work with the installer to schedule and install each work during the summer.

Commissioner Gulati asked if all of the boxes will be covered and if some artists will have their works repeated. Ms. Stamm said the budget is sufficient to only address 15 boxes. Each box will have a unique work covering it. In the next phase if utility box wraps, which will likely focus on the Downtown, a new set of artists and designs will be selected.

Answering a question asked by Councilmember Stokes, Ms. Stamm said the wraps not only make the public realm more interesting and inviting, they help to cut down on graffiti. Each will be coated with a material that makes it easier to remove graffiti.

Commissioner Gulati said she found the designs to be very charming and hoped the community will as well.

Commissioner Aldredge said she liked the diversity of artwork, noting that they do a great job of expressing the different parts of the community.

Commissioner Lau Hui asked about the installation schedule and Ms. Stamm said the installation process will have to happen during the summer when the weather is good.

A motion to approve the final designs was made by Commissioner Lau Hui. The motion was seconded by Commissioner Wolfteich and the motion carried unanimously.

6. COMMISSION QUICK BUSINESS – None

7. REPORTS

A. Commissioner's Committee and Lead Reports

Ms. Stamm pointed out that with the departure of Chair Malkin the Funding and Grants Committee has an open seat that will need to be filled soon.

B. Project Updates from Staff

Ms. Stamm reported that she was working with the facilities staff to get works from the city's portable art collection placed in City Hall. There have been talks about possibly doing something along the catwalk on the second floor for the public to enjoy once City Hall is open again to the public and staff. Other places to site the works include mini City Hall and the King County district court.

Ms. Stamm said she was working with the vendor for maintenance on the work *Arc With Four Forms, Garden of Alternatives* and two other pieces that are in need of some attention.

Ms. Stamm took a moment to introduce Philly Marsh who will be filling in for Mr. MacDonald on an interim basis.

With regard to filling the vacant Commission seat, Councilmember Stokes explained that as the Commission's liaison he will work with the Chair and staff on reviewing the applications, conducting interviews, and making recommendations to the Council for approval.

8. ADJOURNMENT

Commissioner Lau Hui adjourned the meeting at 5:25 p.m.



Action & Discussion

Action

Tuesday, September 7, 2021

Bellevue Arts Commission

Zoom Meeting: 4:30 pm

Commission Staff Contact: 425.452.4064

130th Streetscape Artwork Final Design

At this meeting, the Arts Commission will be presented final design plans for the 130th Streetscape Artwork developed by artist Po Shu Wang. The commission will be asked for their recommendation to approve final design.

Motion: A motion to recommend the approval of the final design of the 130th Streetscape Artwork by Po Shu Wang as presented.

BACKGROUND

The 130th Streetscape project is a major Transportation initiative that will anchor the east side of the 130th light rail station and connect Bel-Red Rd with Northup Way with a new streetscape. 130th Ave NE, planned as BelRed's Shopping Street, will be built in anticipation of large numbers of pedestrians in the future. Construction of the street will be complete prior to the opening of the Eastlink light rail line and 130th Light Rail Station. As roughly the center of what has been called the "BelRed Arts District," 130th was determined to be an optimal location for a landmark artwork.

Artist Po Shu Wang was selected by an artist selection panel in 2018 to create an artwork design for the street. The total project budget, including design, fabrication and installation was set at \$200,000. 20% of that total, or \$40,000, was allocated towards design. On December 1, 2020, the Arts Commission recommended to approve Conceptual Design of Po Shu's artwork.

The artwork, currently untitled, will be made of stainless steel with lighting and sound components activated as pedestrians closely approach the artwork. It is planned to be installed at the conclusion of the construction of the streetscape project, anticipated in early 2023. Please refer to the attached materials for additional details on the artwork's final design.

NEXT STEPS

If the commission votes to recommend the approval of final design of this artwork, staff will begin drafting a contract for fabrication and installation. Since the fabrication and installation budget is \$160,000 and above the threshold for Council approval, staff will present the contract to City Council for their approval at a future meeting. The Arts Commission will be provided regular updates on the project's progress, but no further action will be asked of the Commission regarding this project.

ATTACHMENTS

Attachment A – 130th Artwork Final Design

PRESENTER CONTACT

Scott MacDonald, Arts Consultant
Ambergris Project, scott@ambergris-project.com

STAFF CONTACT

Manette Stamm, Arts Program Analyst
425-452-4064, mstamm@bellevuewa.gov

ATTACHMENT A - 130TH ARTWORK FINAL DESIGN

ARTWORK TITLE: currently untitled

ARTIST: Po Shu Wang

Attachment A includes:

1. Project Narrative
2. Project Budget
3. Artwork Renderings
4. Site Plan
5. Structural Plan
6. Systems Plans (electrical, sound)

130TH ARTWORK CONCEPT DESIGN

PROJECT NARRATIVE

Po Shu Wang - LIVING LENSES

INSPIRATION AND CONCEPT

Site Identity - A straight forward way to identify the artwork site's relative position and relative time within the larger environment, is its magnetic declination.

Two useful relationships that gives meaning to how we manage to navigate on this finite yet unbounded surface of our Earth, a courtesy between the stability of the North Star (Polaris) directly above our Geographic north, and the wondering Magnetic Poles.

Magnetic Declination - Our site coordinates are 47°37'27.75"N - 122°10'1.42"W (47.6213 N - 122.16903 W in decimal). Its Magnetic Declination is 15.66° E - in the year of this conception.

Tone Circle, Sonic Identity - This simple place identity of 15.66° of magnetic declination when charted onto a Tone Circle (used by musicians and acousticians to visually display an octave's worth of notes and their tonal ratio relationships to each other) we can obtain the Tonal Center pitch of our site, a note at 269.7946 Hz. A slightly sharper pitch than our standard C# Note on the piano keyboard.

** Please refer to note below and Proposal file for calculations and tone assignment details.*

ARTWORK

Interactive Sculpture - An Info plaque in front of the sculpture invites the public to collaborate with the artwork to evolve a uniquely Bellevue's own musical composition in real time. Our software runs an on-going musical composition in Bellevue's scale, and a proximity sensor embedded at front of the sphere of the sculpture allows the public to place their hand over it and activate different layers of human vocals over the music.

See Electrical File drawing for interactive setup details.

CONCEPT EXPANDED APPLICATION

Pedestrian pavers' tiling design patterns along 130th's sidewalk follow a Bellevue music graphic sheet progression, designed in collaboration with project site architect, Michael Cannon.

GENERAL DETAILS

Sculpture overall dimensions: H 12'2" x W 7'0" x D 9'4".

Material: SS316 Stainless exterior, SS304 interior structure, footing, anchors.

Electronics: In modular off-the-shelf components parts, with custom software.

For more details, please see individual noted drawings.

** NOTE: C4 is 261.63 Hz and C#4 is 277.18 Hz, this tonal interval occupies a 30° angle on the Tone Circle, with a discrepancy of 15.57 Hz between them. Since each degree angle has $(15.57 \text{ Hz} / 30^\circ) = 0.519 \text{ Hz}$ Each degree angle has $1200/360^\circ = 3.3333 \text{ Cents}$. An octave in a musical scale has 1200 Cents in musical acoustics, so Each degree angle has $1200/360^\circ = 3.3333 \dots \text{Cents}$. Bellevue Magnetic Declination's 15.43° angle has 51.4332 Cents $(1.031207 \text{ Tonal Ratio} \times 261.626 \text{ Hz standard middle C})$ that makes our Site's Tonal Center Note to be 269.7946 Hz.*

Table 1

BUDGET SHEET		
Po Shu Wang- LIVING LENSES		
130TH STREETSCAPE ART PROJECT		
08/23/2021'		
ITEM	DESCRIPTION	AMOUNT
ARTIST FEE	At 5% - Administration and General Orchestration.	8000
ENGINEERING	All sculptural elements, foundations.	2400
CONSTR. DOC.	Shop Drawings for all subcontractors.	2800
ARTWORK FABRICATION	Forging, Internal Structure, footing, and anchors. Electronics hardware and software.	112,000
ELECTRICAL	Site works.	5,800
INSURANCE	General and Professional Liabilities.	1200
DOCUMENTATION	Process and Final Documentation. Stills and Video.	1800
SHIPPING AND INSTALLATION	Installation by Local Subcontractor	22000
CONTINGENCY	Unused contingency reverts to Artist Fee	4000
TOTAL	160.000	160000

SCULPTURE DESIGN 2

GENERAL SPECIFICATIONS:

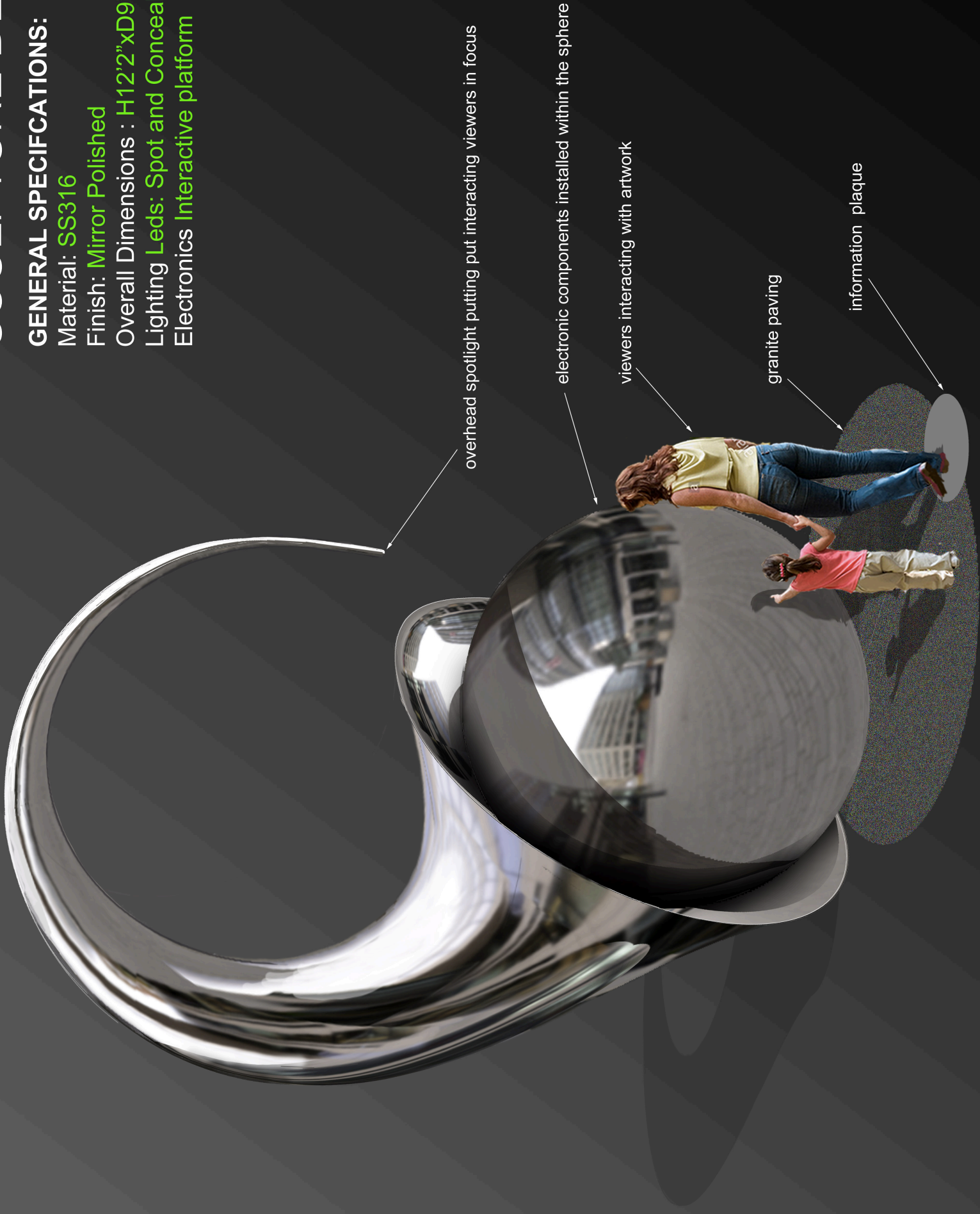
Material: **SS316**

Finish: **Mirror Polished**

Overall Dimensions : **H12'2"xD9'4"x8'0"**

Lighting **Leds: Spot and Concealed Array**

Electronics **Interactive platform**



Technical drawing of a mechanical part, likely a flange or a similar component, showing dimensions and a 3D model.

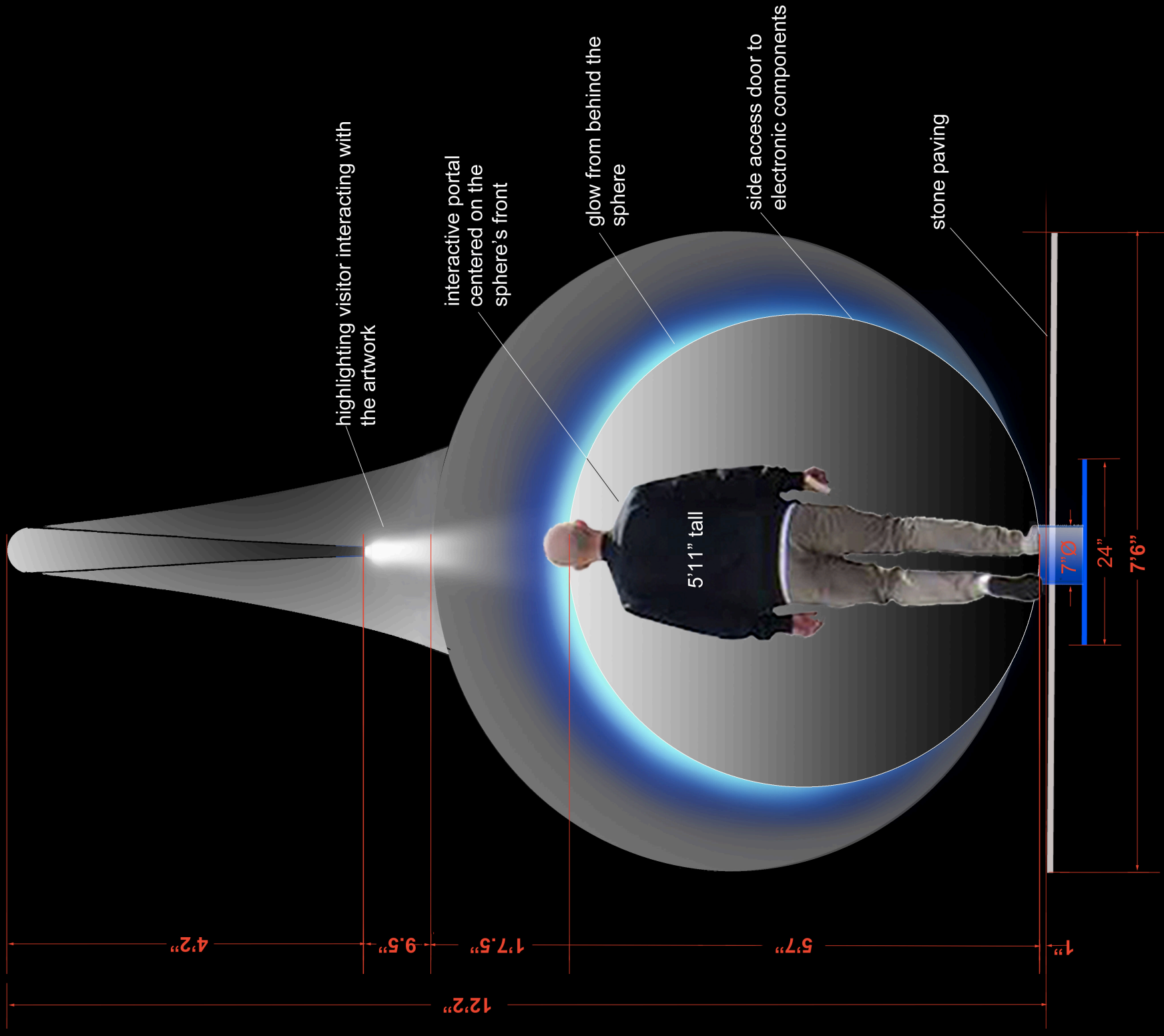
Dimensions (inches):

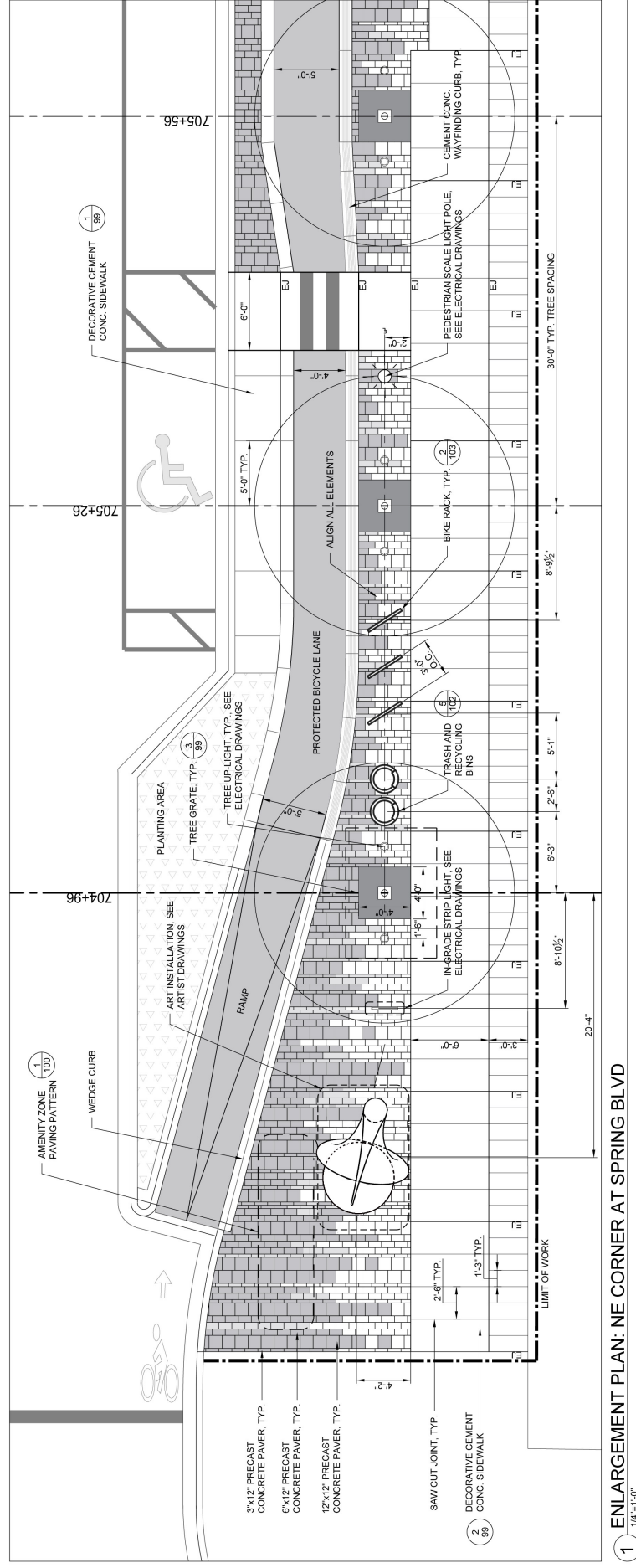
- Overall width: 12.2"
- Overall height: 9.4"
- Top flange thickness: 1.1"
- Top flange outer diameter: 20.0"
- Top flange inner diameter: 8.0"
- Top flange hole diameter: 5.7"
- Top flange hole spacing: 3.0"
- Top flange hole diameter: 6"
- Top flange hole diameter: 1.75"
- Top flange hole diameter: 9.5"
- Top flange hole diameter: 4.2"
- Top flange hole diameter: 8.0"
- Top flange hole diameter: 7.0"
- Top flange hole diameter: 5.6"
- Top flange hole diameter: 2"

3D Model:

The 3D model shows the part with a blue highlight on the top flange, indicating the area of interest. The model is rendered in a perspective view, showing the top and side of the part.

FRONT ELEVATION





NOTES:

1. SEE DETAIL 1, SHEET 97 FOR PAVING TYPES, COLORS, AND SIZES.
2. REFER TO ENGINEERING PLANS FOR PAVING SECTIONS AND DETAILS.
3. REFER TO ARTIST DRAWINGS FOR ART INSTALLATION DETAILS.

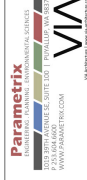
CHECK PRINT STAMP		
	SIGNATURE	DATE
CHECKER	PT	9/25/2019
CORRECTOR	VK	9/25/2019
VERIFIER	MC	9/25/2019



90 % REVIEW SUBMITTAL
NOT FOR CONSTRUCTION

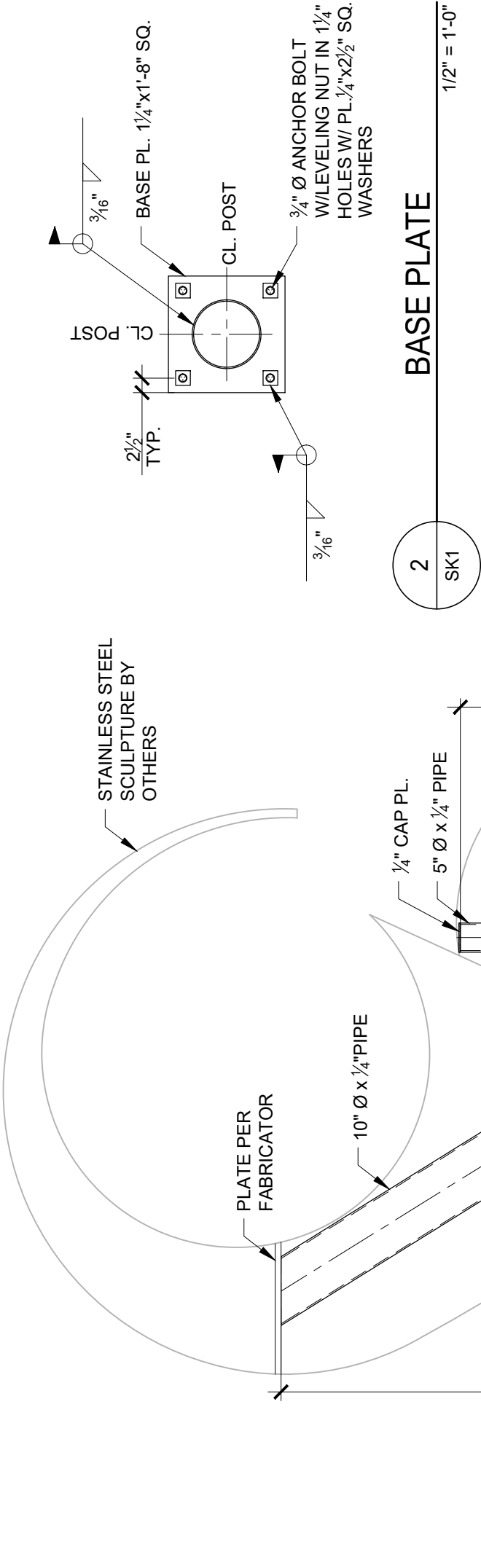
[illegible]

City of
Bellevue
Transportation Department



130TH AVENUE NE -
BEL-RED ROAD TO
NE 20TH STREET

GENERAL NOTES	
1.	COORDINATE ALL GEOMETRY WITH ARTIST BEFORE FABRICATION
CONCRETE:	
1.	ALL MILD-STEEL REINFORCING SHALL HAVE A MINIMUM YIELD STRESS (Fy) OF 60 KSI.
2.	CONCRETE F'c = 3000 PSI W/CM RATIO NOT TO EXCEED 0.45. MAX AGGR. SIZE 1.5 IN.
3.	NONSHRINK & DRYPACK GROUT SHALL CONFORM TO ASTM STANDRAD C1107, NON-METALLIC, MINIMUM COMPRESSIVE STRENGTH OF 2400 PSI IN 48 HOURS, 5000 PSI IN 28 DAYS.
STRUCTURAL STEEL:	
4.	ALL STRUCTURAL STEEL TO BE STAINLESS STEEL TYPE 316 (Fy = 30 KSI, Fu = 75 KSI) INCLUDING: ANCHOR BOLTS, NUTS, WASHERS, PLATES & ROUND PIPE SECTIONS.
5.	ALL WELDING SHALL BE IN CONFORMANCE WITH AWS D1.6 SPECIFICATIONS.



Living Lenses - Horn and Sphere Sculpture
130th Ave NE Bellevue, WA

STRUCTURAL SUPPLEMENTAL DRAWING

TIPPING

STRUCTURAL ENGINEERS

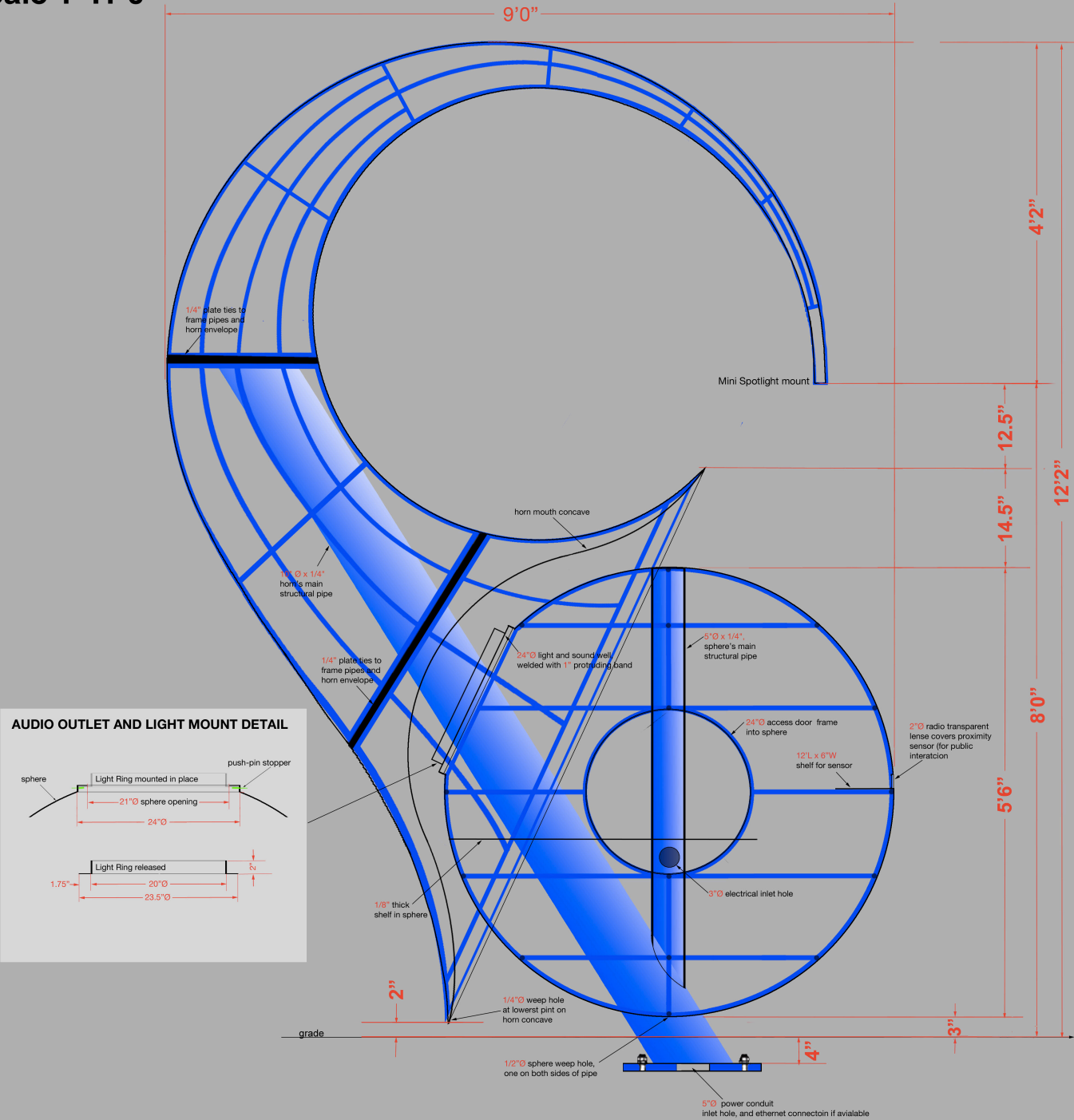
1506 SHATTUCK AVE | BERKELEY, CA 94704
510 549-1906 | www.tippingstructural.com

SSD-001	SCALE: 1/2" = 1'-0"
	DATE: 02.12.2021
	RE:
	REFERENCE
	DRAWING: SK1
	SPEC. SECTION:

HORN & SPHERE STRUCTURAL DETAILS

Tipping Job# 2021.030.00

FABRICATION - SIDE ELEVATION
Scale 1":1'0"

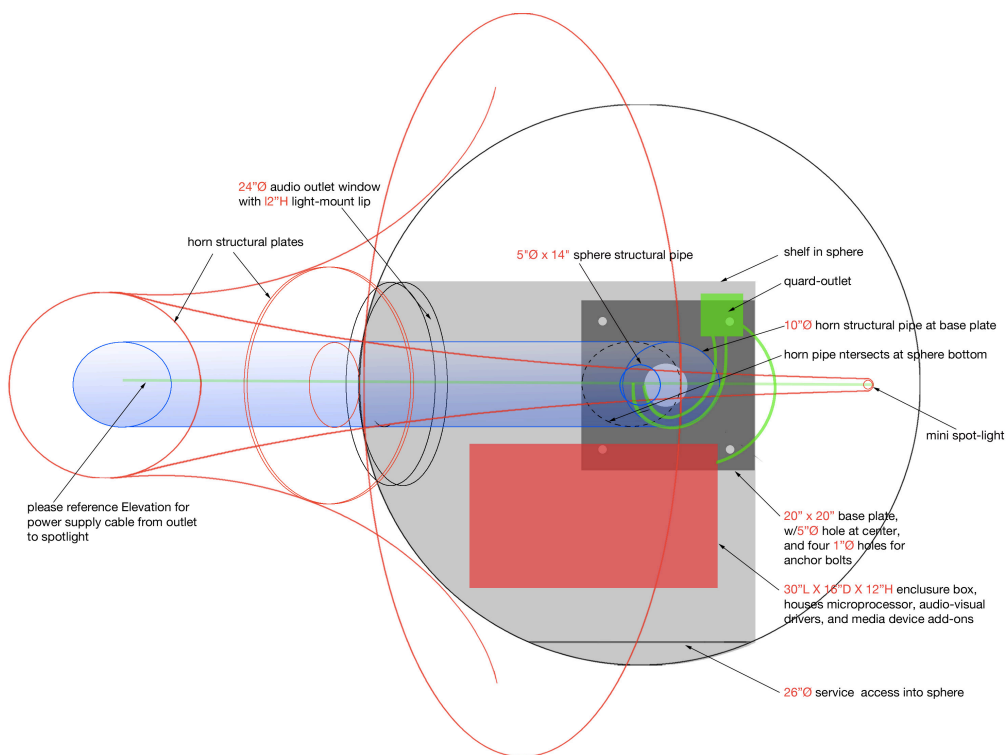


SCULPTURE PLAN - ELECTRICAL

Scale 1"= 1'0" (Original Drawing)

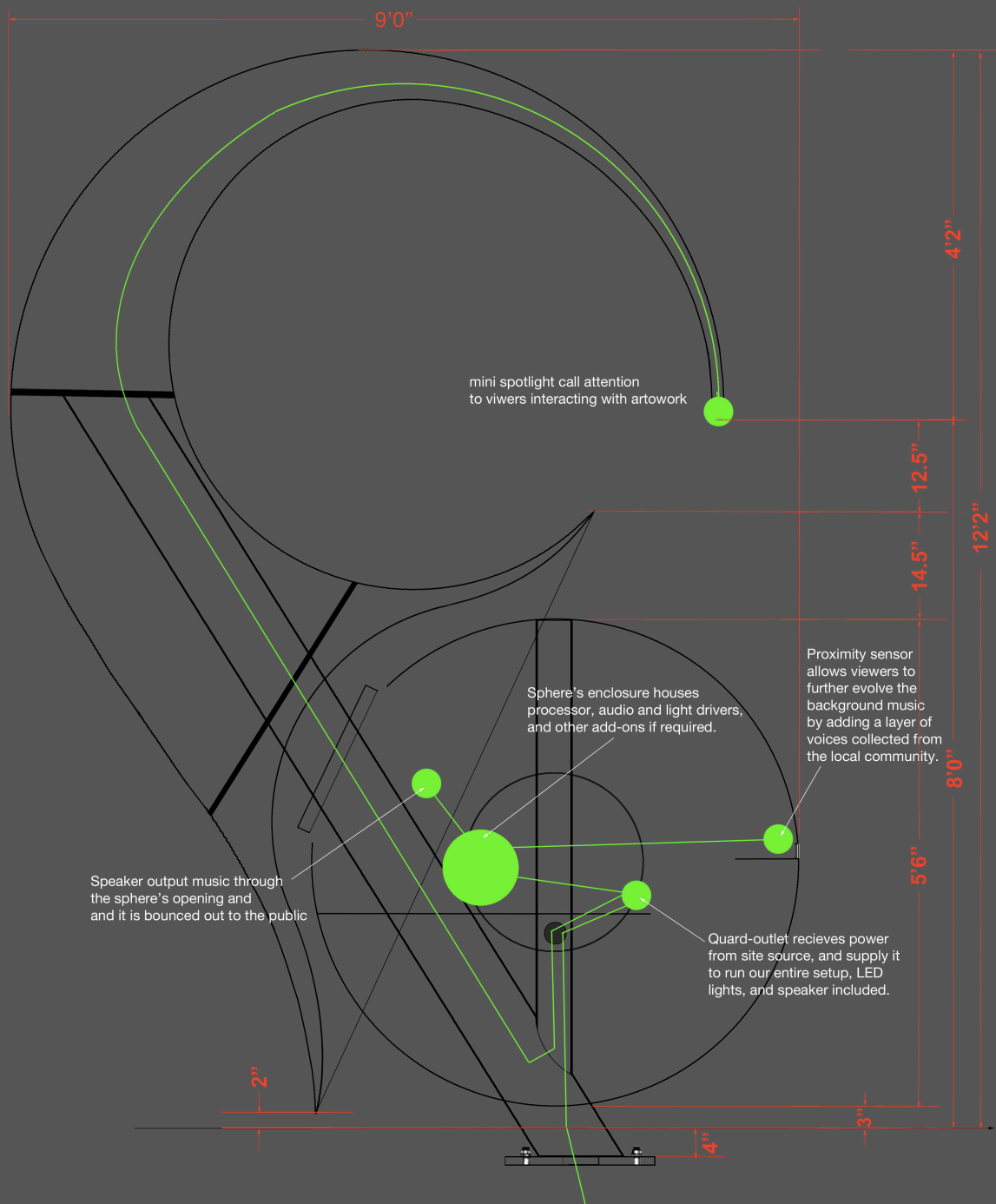
REQUIRED CITY POWER SUPPLY TO RUN SCULPTURE

- 110 power supply for max. 500 watts consumption
- from site source to sculpture foundation anchor plate center
- fullsize template of our sculpture's anchor plate will be provided
- please terminate with a 6ft. whip above grade



INTERACTIVE SCHEMATICS

Scale 1" = 1'0"



Utility Box Wraps Program

At this meeting, staff will present information about a future call for artists to wrap utility boxes in Downtown Bellevue.

BACKGROUND

The first round of this program has just about been completed, wrapping a total of eight locations in BelRed with commissioned art from six local artists. The call required artists to be on our Eastside Artist Roster, which grew considerably because of this call.

THE FUTURE CALL

At the next meeting, staff will present an official call for artists to design wraps for a series of boxes in Downtown Bellevue. The call will be for high-quality digital or scanned artworks that can be scaled and printed in vinyl for wrapping boxes. Submissions to the call will be restricted to King County and potentially other counties. The budget for this phase of art utility box wraps is \$40,000 and is funded entirely through a donation from Amazon. Artists with selected artwork(s) will receive an \$800 artist stipend for larger boxes and \$300 for the smaller service boxes. There is a chance this call could cover additional services boxes in various parks downtown, which do not follow the exact sizes of traffic signal boxes and could result in a lower or higher stipend. These wraps typically have a 7-10 years lifespan, although the wraps can last well over 10 years if the box does not need replacement.

If the Arts Commission approves the call presented at their next meeting, staff will advertise the call and develop a selection panel. Staff will collect artwork submissions via SurveyMonkey Apply, the program used to collect and manage our Grants Program. Artists will be required to be living in King County, and potentially other surrounding counties given the Arts Commission's guidance. The call will be advertised to artists on the Eastside Artist Roster and shared with 4Culture, cities on the Eastside and on social media. Once the call closes, staff will work with a review panel comprising of one to two Arts Commissioner, one to two community stakeholders (must include a member of the Bellevue Downtown Association as per Amazon's request), and one art professional. The panel must make up an odd number. The panel's artist recommendations and final designs will be presented to the Arts Commission for their approval before staff works to implement the wraps.

PROPOSED TIMELINE OVERVIEW

October 2021

- Call presented to Arts Commission
- If approved, advertise call and collect submissions

November

- Call closes, and panel review begins

December

- Review panel meets and creates recommendations for Arts Commission to review

January 2022

- Recommended artists presented to Arts Commission for approval
- Staff works to site artworks, confirm placement and final designs with artists, contract production and installation

February-June

- Final designs presented to Arts Commission for approval
- Contract with production and installation finalized

August, ongoing

- Installation complete
- Monitor boxes
- Review program - lessons learned, etc.
- Plan for second phase of wraps focused on Factoria or Crossroads

STAFF CONTACT

Manette Stamm, Arts Program Analyst
425-452-4064, mstamm@bellevuewa.gov

Information

Tuesday, September 7, 2021

Bellevue Arts Commission

Zoom Meeting: 4:30 pm

Commission Staff Contact: 425.452.4064

Bellwether Overview

At this meeting, staff will present an update and overview of Bellwether 2021.

BACKGROUND

This year, Bellwether is two shows in one with a myriad of two- and three-dimensional art and events. Bellwether will take place all of September, with a concentration of events Sept. 9-19, and will take place in the Bellevue Botanical Gardens, Bellevue Arts Museum, Downtown Park and Meydenbauer Center Theatre.

BELLWETHER EVENTS

Below is an overview of all that is planned for Bellwether this year. Two- and three-dimensional art will be on view all of September at Bellevue Arts Museum and Bellevue Botanical Gardens. All events are free and open to the public. BAM is open Wed-Sun, 11am – 5pm, and the Bellevue Botanical Gardens is open dawn-dusk, daily. Masks required in all indoor locations

September 10

Catherine Cross Uehara: *STRAWBERRY FIELDS FOREVER!*

Performance in Downtown Park. The artist will explore embodied ancestry and a journey of self-discovery.

Downtown Park, morning.

Swallowing Silence: A discussion on Power and Censorship in the Arts.

A panel discussion between Erin Shigaki and Anida Yoeu Ali moderated by Ploi Pirapokin, focusing on important topics that many artists are navigating and that may be of interest to local residents and artists more broadly given our city's diversity. In recent years local artists and others in our communities have been impacted by arts-related controversy. It is possible those events will resurface during the discussion as opportunities to learn and understand artists' diverse needs and perspectives.

1 - 3pm at the Bellevue Arts Museum

September 11

Jesus Benavente: *We Built This With The Weapons You Gave Us*

Collaborative/Interactive brick drawings in front of BAM with one table and art supplies. Bricks moved to Court of Light for a faux-fire pit and seating. Jesus will individually guide each participant to the court of light to place their work in the museum.

11am - 5pm at the Bellevue Arts Museum

Anida Yoeu Ali, *The Red Chador: Genesis I*

"The Red Chador: Genesis I" is a reimagined performance by Anida Yoeu Ali that engages public spaces both outdoors and indoors bringing a hypervisibility to both issues of Islamophobia and homophobia. The Red Chador series continues Ali's thematic interest in using religious aesthetics to provoke ideas of otherness. Cloaked in unique long sequin chadors or "Muslim" headdresses, Ali along with six other performers, silently encounter an "unsuspecting" public in small acts of interventions that challenge the public's perception and fears of the other. Together all seven performers or chadoras create a moving rainbow spectrum, an intentional colorful spectacle to reclaim the gaze of the Muslim woman. This iteration for the Bellwether Festival includes a large-scale video projection (a 9min looped original short film) inside the museum's gallery space. The performance itself begins with the seven chadoras inside the museum and ends with the performers in a procession in and around the city blocks of Bellevue. The goal is to perform a public durational walk, a colorful procession, similar to previous other iterations where fully veiled bodies traverse public streets, plazas and parks as well as enter shops, malls and institutional landmarks such as the Bellevue Art Museum. This performance on the twentieth anniversary of 9/11 marks an important political moment in which historically othered bodies reclaim spaces and the gaze of the public through their hypervisible presence.

Procession through Downtown, starting at the Bellevue Arts Museum at noon.

Gustavo Martinez, *The Guardian Within*

A public demonstration throughout the day of the artist's process used to create a sculpture that is mostly composed of wheel thrown forms. This will be done in the open for passerby to engage at the level of their comfort.

11am - 4pm at the Bellevue Botanical Gardens in the Gathering Space just to the left of the entrance. Drop in at your own comfort to watch, ask questions.

EastHUB Live Music - evening performances

Theme: Resilience – Honoring our first responders, EMTs, and Essential Workers

Meydenbauer Center Theater

September 18

Full Disclosure, curated by Mo Quick

This art show and market will provide a space for artists to display and/or sell their personal or collaborative works with transparency of making in mind. The space can be used as a platform to share skills and involve viewers in the process of making or performing their work. Consider it bringing the studio to the audience. The popup's theme, "Exposed" highlights the uncovering of methods of making and exploring processes from sketching, planning, handling materials, and execution. This show will be putting a metaphorical frame to the underbelly of the final product.

11am - 5pm at the Bellevue Arts Museum

EastHUB Live Music - afternoon and evening performances

Theme: Community – Celebrating the Eastside's rich cultural diversity

Downtown Park

NEXT STEPS

At the conclusion of Bellwether, city staff will sit down with partners and debrief and have the opportunity to understand what's working, what isn't, and what could be done differently and better in the future.

STAFF CONTACT

Manette Stamm, Arts Program Analyst
425-452-4064, mstamm@bellevuewa.gov



Community Development

Reports

Reports

Tuesday, September 7

Bellevue Arts Commission

Zoom Meeting: 4:30 pm

Commission Staff Contact: 425.452.4064

PROJECT UPDATES

GENERAL

Artspace

No updates to report.

GRANT PROGRAMS

2021 Funding Cycle and Allocations Committee

No update to report.

2022 Funding Cycle and Allocations Committee

Update: Now open for applications. Reminder, this year's Allocations Committee members from the Arts Commission are Judy Gowdy, Lydia Aldredge and Bhavna Bhargava

CIP Cultural Arts Fund

No update to report.

PLANNING PROJECTS

BelRed Arts District

Update: Report from Katie Miller is complete and published on the city's website.

Cultural Compass

Update: Applied for an NEA grant to fund this; this is the second time we are applying.

PUBLIC ART

121st and Spring Artwork

No update to report.

130th Streetscape Public Art

Update: An update will be given at this meeting.

Bellwether 2021

Update: An update will be given at this meeting.

Downtown Park Public Art

No updates to report.

East Link Public Art

No update to report.

Eastside Artist Roster

No update to report.

Grand Connection

No updates to report.

Public Art Collection & Maintenance

No updates to report.

Portable Art Collection Call

Update: Art is now on view through the end of the year along the second-floor catwalk at City Hall. City Hall is currently open to the public 8am to 4pm, masks required.

Utility Box Wraps Program

Update: An update will be given at this meeting.



Community Development

Information

2021 Commissioner Committee Assignments

GRANTS AND FUNDING COMMITTEE

Review of equity and process updates to the Grants Program guidelines and application and other issues that involve funding the arts. Note: commissioners serving on the grants committee should not also serve on the allocations committee.

- Ashmita Gulati
- Maria Lau Hui

ALLOCATIONS COMMITTEE

Review grant applications and make recommendations to the commission on awards.

- Judy Gowdy
- Lydia Aldredge
- Bhavna Bhargava

PUBLIC ART COMMITTEE

Review and inform arts policies, future public art projects, and other issues specific to the Commission's work of providing guidance on public art. One member from the committee would be assigned to serve on the artist or artwork selection panel for each upcoming public art project that involves an artist or artwork selection panel (one commissioner per project). Initial 2021 projects are the Utility Box Wrap Program and art policies. Note: due to the need to draft art policies, it is recommended that at least one commissioner familiar and/or passionate about diversity, equity and inclusion serve on this committee.

- Ashmita Gulati
- Lydia Aldredge

BELLWETHER COMMITTEE

Advise planning for Bellwether 2022.

- Carl Wolfeich
- Monik Martinez

BELRED ARTS DISTRICT COMMITTEE

This committee would work to help plan inform implementation of the BelRed Arts District. 2021 projects include planning for a future implementation plan for the arts district, engagement with the BelRed Look Back, a land use code update, and other initiatives. Note: at least one commissioner on this panel should be familiar with how land use codes work, with some knowledge of the land use incentive system.

- Ashmita Gulati
- Carl Wolfeich
- Maria Lau Hui

COMMUNITY PARTNERSHIPS COMMITTEE

This committee will be focused on any work that may come up throughout the course of 2021 that involves community partnerships. Example work could be programs developed in partnership with outside organizations to further arts development. An example project could be the Artspace Market Survey.

- Judy Gowdy
- Monik Martinez