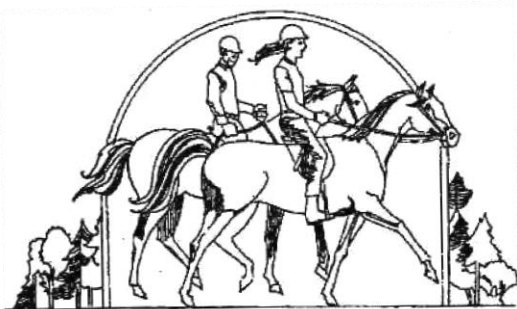


# Neighborhood Park Development **Bridle Trails**

**140<sup>th</sup> Avenue NE Park  
(Ginzburg Acquisition)**



Park Board Meeting  
May 10, 2016



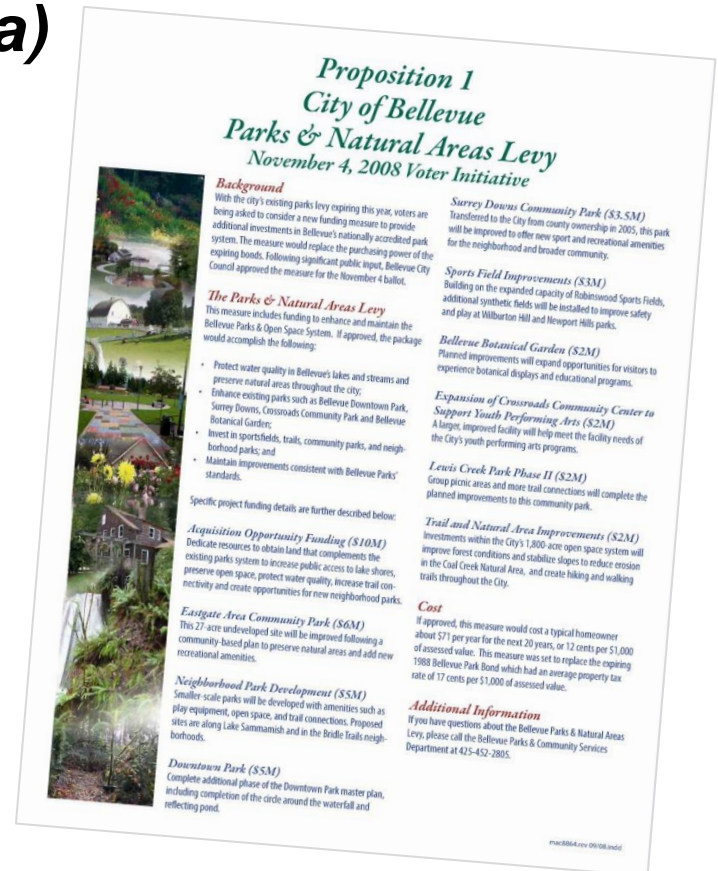
# Agenda

- Project Introduction/Review
- 4432 140<sup>th</sup> Ave NE (Ginzburg acquisition) Site
- Site Information, Opportunities & Challenges
- Timeline and Work Complete
- Site Photos
- Survey Results
- Proposed Park Program & Concept Design
- Preferred Design
- Comments Q&A

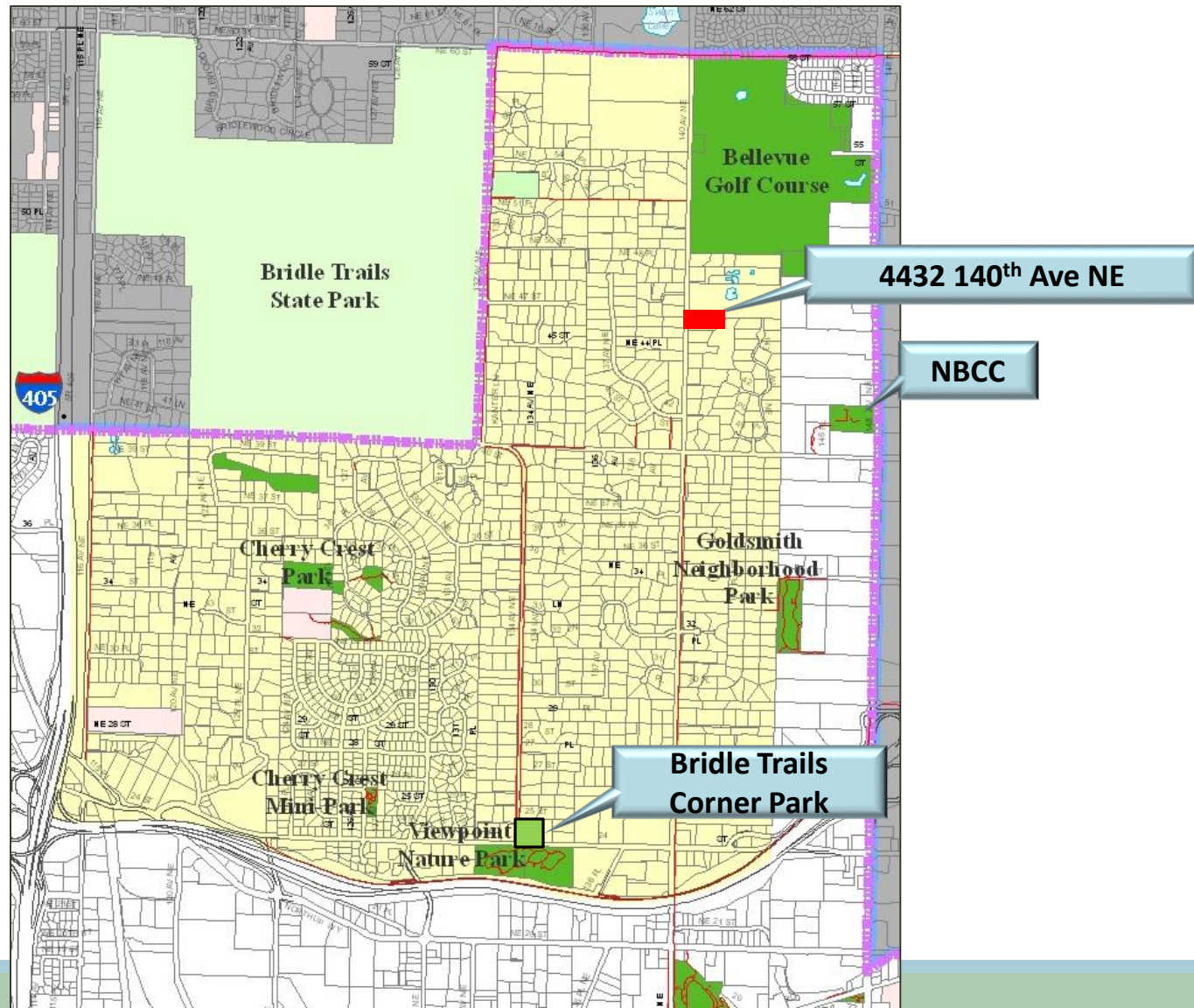
# Parks & Natural Areas Levy

## ***Neighborhood Park Development (\$5M) (2.5M for Bridle Trails Area)***

Smaller-scale parks will be developed with amenities such as play equipment, open space, and trail connections. Proposed sites are along Lake Sammamish and in the Bridle Trail neighborhoods.



# Bridle Trails Neighborhood

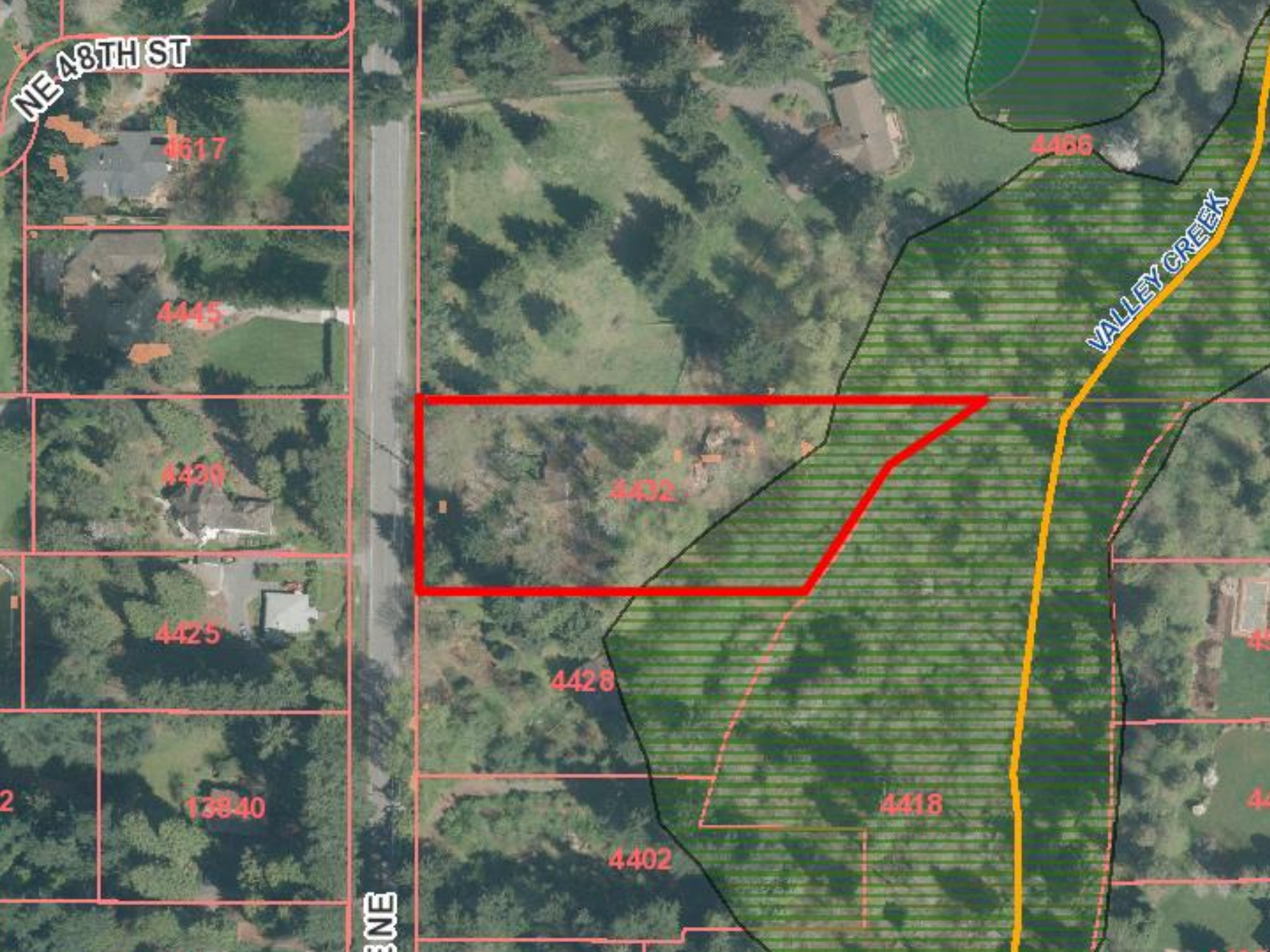


# Ginzburg

## Acquisition Site

4432 140<sup>th</sup> Ave NE  
Approx. 1.65 Acres





NE 48TH ST

4417

4466

4445

VALLEY CREEK

4439

4432

4425

4428

2

13840

4418

4402

3RD ST NE

# Project Milestones

- Property acquired by Bellevue CC (Oct 20, 2014)
- Kick-off community meeting- project intro (May 13, 2015)
- On-line survey (May-July 2015)
- House demolition complete (Aug 2015)
- Second community meeting-designs presented (Oct 7, 2015)
- Third Community meeting-preferred plan presented (Feb 10, 2016)
- Bridle Trails Community Club General Meeting (Mar 24, 2016)

**Site looking east  
from current  
140<sup>th</sup> Ave  
shared entry**



**Before demo**



**After house demo**

**Looking east from  
proposed park entry**



**Looking east  
toward NGPA  
from high point**



# On-line Survey & Comments Received Results

## Total Respondents 55 (presented 2<sup>nd</sup> Community Meeting)

**Question: What type of improvements would you like to see in the new neighborhood park?**

Playground	25
Trails-16 & Nature Viewing and/or Interpretive Elements	10 (26)
Open lawn area for play/non-programmed sports	10
Picnic shelter/covered gathering area	9
& Picnic Table/BBQ/Benches	6 (15)
Sports Court	5
Pedestrian access, improvements /crosswalk	4
Adequate Parking	4
Minimal improvements, no development or leave natural	4
Bathrooms	3
Dog Park	2
Adult activities	2
Bike Riding access	2
Community Garden	1
Did not respond to question	8

# Play Areas

## Ages 2-5, 5-12 & Adventure Play



# Open Space, Trails, Amenities Interpretive Elements



# Picnic- Gathering Shelter



**Concept  
only**

# Bridle Trails Neighborhood

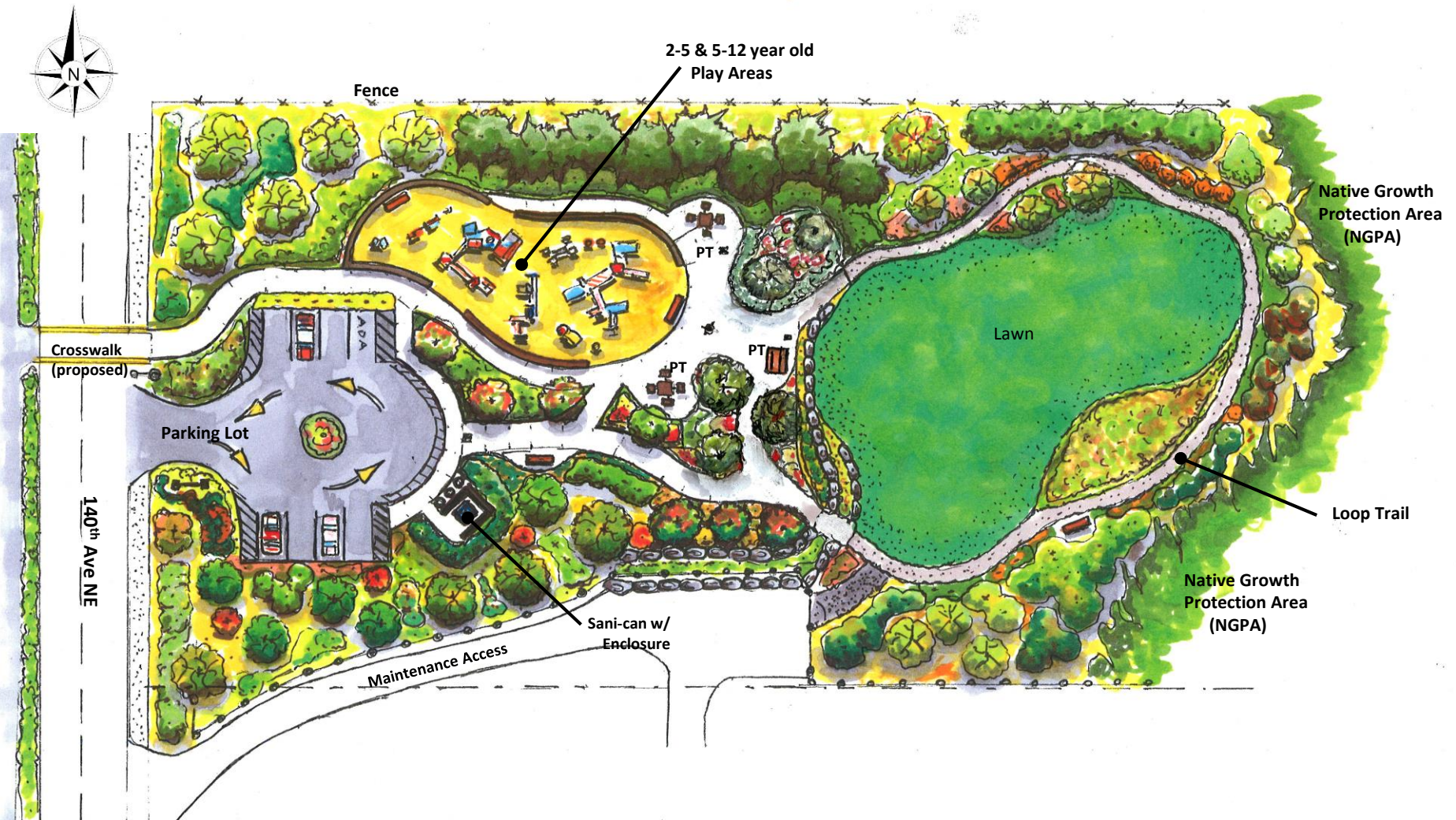
4432 140<sup>th</sup> Ave NE (Ginzburg Acquisition)



Concept Plan View - A (2<sup>nd</sup> Community meeting)

# Bridle Trails Neighborhood

4432 140<sup>th</sup> Ave NE (Ginzburg Acquisition)



Concept Plan View - B (2<sup>nd</sup> community meeting)

# What we heard at the 2<sup>nd</sup> community meeting & after (incorporations in preferred plan in *italic*)

- Sufficient parking (*increased capacity by 1/3*)
- Pedestrian park access and connections to surrounding neighborhoods (*flashing crosswalk proposed*)
- Picnic shelter (*smaller scale included*)
- Older kids-adventure play area (*included*)
- Interpretive elements and benches (*included*)
- Security of adjacent homeowners
- ROW improvements eastside of 140<sup>th</sup> (*walkway along park frontage proposed*)

# Bridle Trails Neighborhood

4432 140<sup>th</sup> Ave NE (Ginzburg Acquisition)



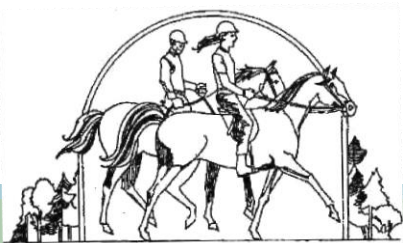
Preferred Park Plan

# Preferred Park Program

- Play areas ages 2-5, 5-12 & adventure play
- Picnic shelter for community gathering (Approx. 20'x20')
- On-Site parking (total spaces max.12)
- Crosswalk for pedestrian accessibility (proposed flashing)
- Picnic tables & benches
- Both hard and soft surfaces paths & loop trail
- Interpretive signage
- Open lawn area for non-programmed sports and play
- Native plantings and wildlife viewing
- ROW frontage improvements

# Next Steps:

- Park Board Recommendation
- Council Review & Approval
- Funding
- Design & Permitting
- Construction



# Opportunities for Feedback & Contact Information

## **Bellevue Parks & Community Services**

Attn: Scott Vander Hyden

450 110<sup>th</sup> Avenue NE  
Bellevue WA 98004

425-452-4169

[Svanderhyden@bellevuewa.gov](mailto:Svanderhyden@bellevuewa.gov)

## **Project Website**

[http://bellevuewa.gov/bridle\\_trails\\_levy.htm](http://bellevuewa.gov/bridle_trails_levy.htm)



# Questions & Comments

