

SUMMER
CAMPS
AND MORE

KELSEY CREEK FARM

Promoting learning
opportunities in a
farm environment



Bellevue Parks &
Community Services

MAY-AUGUST 2020



Kelsey Creek Farm provides the community an opportunity to cross the threshold of urban living into an agricultural experience, while maintaining the historic integrity of the farm, through interpretive displays and education. Our programs foster creativity and active play. The Farm's two historical barns sit prominently on the crest of a hill. There is no entrance fee; however, we welcome and appreciate your donations.

When visiting any of Bellevue's parks, all dogs and other pets must be kept on a leash. Out of consideration for our farm animals' health and wellbeing, please observe all posted signs prohibiting pets from the barnyard.

**FARM ANIMALS IN THE PASTURES DAILY FROM
9:30AM TO 3:30PM, 365 DAYS A YEAR
(R) RESIDENT / (N) NON-RESIDENT**



Child and Family Activities

Kelsey Creek Farm Story Time

Come enjoy story time in a farm setting. Each story session will involve a different farm-related theme and include a visit with one of our resident farm animals. The stories will come alive for your children as they see the featured animal characters from the stories in real life. Pre-registration not required. Children must be accompanied by an adult. Space is limited. Doors close when the program begins.

Ages: 3-6

Fees: Free

Hours/Dates: 10:30-11am

Friday

May 1	20011610
May 15	20011611
May 29	20011612
June 12	20011613



Pioneer Life on the Farm

Experience pioneer life in our historic log cabin.

Children will try their hand at pioneer chores, learn about historic farming at Kelsey Creek Farm, and go on a pony ride! We will learn how horses were an essential part of pioneer farm life and what it takes to care for animals.

Ages: 4-8

Fees: \$30 (R) \$36 (N)

Hours/Dates: 1:30-3pm

Saturday

May 2	2000390
-------	---------

Fun on the Farm

Join Mrs. Kandi for a fun time as an adult/child team. Each week we will have a different theme enhanced with sensory activities based on a farm topic or animal. We will cook, play, create, walk on the farm, pet a chicken, hug a bunny, and have lots more fun.

Ages: 2-5

Fees: \$90 (R) \$108 (N)

Hours/Dates: 10:30am-noon

Wednesday

May 6-27	2001706
----------	---------

Thursday

May 7-28	2001707
----------	---------



Mother's Day at Kelsey Creek Farm

Celebrate Mother's Day with your child in the company of our friendly farm animals. You and your child will pet a bunny, explore the log cabin, and prepare a special Mother's Day surprise. Adult/child teams only. A team is one child and one adult.

Ages: 4-8

Fees: \$25 (R) \$30 (N)

Hours/Dates: 1:30-2:30pm

Saturday

May 10 2001062

Let's Celebrate Ladybugs!

Grab your adult and join Mrs. Kandi for a ladybug release to populate our farm gardens. Learn about ladybugs, read a ladybug story, create ladybug art, and take home your own ladybugs to live in your garden.

Ages: 2-5

Fees: \$30 (R) \$36 (N)

Hours/Dates: 10-11:30am

Saturday

May 30 2000323

Spring Has Sprung

Spring on the farm is always busy and exciting with plants growing, babies arriving and the weather warming up. Adult/child teams will spend time together working on craft projects, meeting a farm animal, and taking a pony ride. Adult/child teams only. A team is one child and one adult.

Ages: 4-8

Fees: \$30 (R) \$36 (N)

Hours/Dates: 1:30-3pm

Saturday

May 30 2000365

Father's Day Fun at Kelsey Creek Farm

Celebrate Father's Day with the animals at the farm! You and your child will feed treats to the pigs, take a sheep on a walk, and prepare a special Father's Day surprise. Adult/child teams only. A team is one child and one adult.

Ages: 4-8

Fees: \$25 (R) \$30 (N)

Hours/Dates: 1:30-2:30pm

Sunday

Jun 21 2001065



Fraser Cabin Heritage Program

Presented by the Eastside Heritage Center in partnership with Bellevue Parks & Community Services, the Fraser Cabin, built in 1888, comes to life with hands-on activities that relate to 1880s settler life. For more information, contact the Eastside Heritage Center at 425-450-1049, or visit eastsideheritagecenter.org.

Ages: All ages

Fees: Free

Hours/Dates: 11am-3pm

Saturday

May 16	2001283
Jun 20	2001284
Jul 18	2001285
Aug 15	2001286

Holiday Farm Tour: Memorial Day

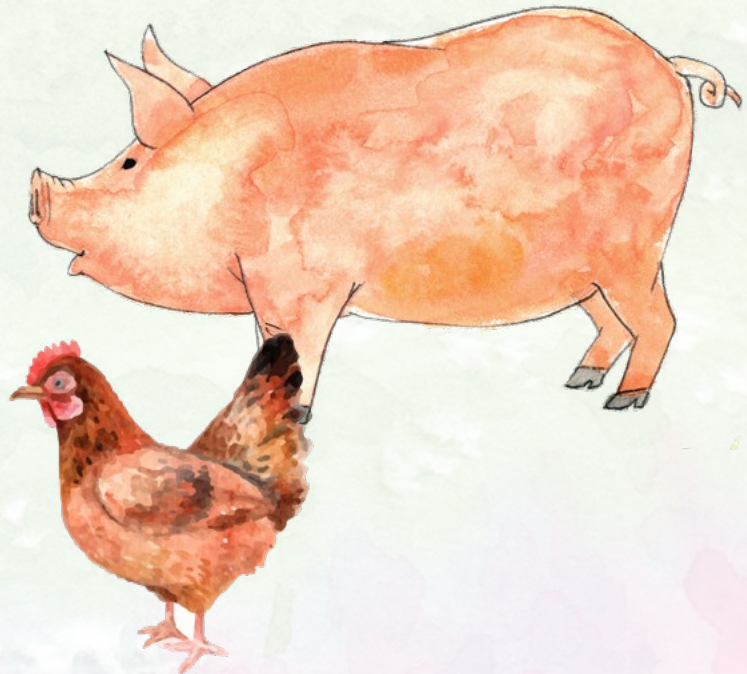
If you've always wanted a tour of the farm to meet our resident farm animals, this is your opportunity! You will get to meet our ponies, pigs, sheep, goats, chickens, and rabbits, and even pet some of them, all while discovering what it takes to be a farmer. This program is designed for children 2-6 but all ages are welcome. Each person that attends the tour must register and pay. Children must be accompanied by an adult. Pre-register to guarantee your spot. Day-of registration on site will be accepted as space allows. Cost is per person.

Ages: 2 and up

Fees: \$8 (R) \$10 (N)

Hours/Dates: Monday, May 25

10-10:45am	2018361
11-11:45am	2018362



Family and Friends Tour

If you've always wanted a tour of the farm to meet our resident farm animals, this is your opportunity! You will get to meet our ponies, pigs, sheep, goats, chickens, and rabbits, and even pet some of them, all while discovering what it takes to be a farmer. This program is designed for children 2-6 but all ages are welcome. Each person that attends the tour must register and pay. Children must be accompanied by an adult. Pre-register to guarantee your spot. Day-of registration on site will be accepted as space allows. Cost is per person.

Ages: 2 and up

Fees: \$8 (R) \$10 (N)

Hours/Dates:

Saturday, 10-10:45am

Jun 6 2008623

Wednesday, 5:30-6:15pm

Jul 8 2018352

Jul 22 2018353

Aug 12 2018354

Free Summer Kid's Shows

Bellevue Friends of the Library, in partnership with Bellevue Parks & Community Services, presents FREE children's events that will be held at Kelsey Creek Farm and Robinswood Parks. **Pre-registration: NOT required.**

Ages: All

Fees: Free

Hours: 11am-noon

Dates	Location	Performer
Jul 14	Kelsey Creek Farm	How to Fool a Dragon (And Save the World) Show, Presented by Eric Ode
Jul 28	Robinswood Park	Nursery Rhymes and Nonsense Songs Concert, Presented by Harmonica Pocket
Aug 11	Kelsey Creek Farm	The Choose Your Own Adventure Show, Presented by Mikey Mike the Rad Scientist



Day Camps

Kelsey Creek Day Camp & Kid's Connection Day Camp

Explore the farm, play active outdoor games, create crafts and make new friends. Trained staff will provide a safe and supportive environment in a small group setting.

Ages: 4-6 (Kelsey Creek Day Camp)

Ages: 7-10 (Kid's Connection Day Camp)

Fees: \$210 (R) \$252(N)

***Adjusted fees for weeks: Jun 23-26 & Jun 29-Jul 2 / \$168 (R) \$202 (N)**

Extended Care Available: 7:30am-5:30pm (No extended care Jun 22-26)

Fees: \$96 (R) \$115 (N)

***Adjusted fees Jun 29-Jul 2: \$77 (R) \$92 (N)**

Hours/Dates: Monday-Friday, 9:30am-3pm

In and Out of the Barnyard

Open the barn door and get to know some of the larger animals at the Farm. Help with barn chores, go on a goat walk and make a tasty treat for the animals. Enjoy a visit from the Humane Society's MaxMobile.

Jun 23-26*

Ages: 4-6	2001157 (No extended care offered this week)
Ages: 7-10	2001182 (No extended care offered this week)

Just Imagine

Envision a world of kings and queens, super heroes and dinosaurs. Let your mind soar through dramatic play, imagination and creativity. This week will include an interactive and educational presentation by the "Parrot Lady" and her talented trick birds.

June 29-July 2*

Ages: 4-6	2001158
Ages: 7-10	2001183

Science on the Farm

How far can an egg fall without breaking? Identify types of farm animals by the size of the animal track, number of toes, or the presence of claws. Campers will participate in a hands-on discovery workshop provided by a special guest from Mad Science.

July 6-10

Ages: 4-6	2001159
Ages: 7-10	2001184



Crazy Camp Olympics

On your mark, get set for a crazy week full of great games, sports and non-stop action. Challenge yourself through an inflatable obstacle course at our annual Kelsey Creek Camp Olympics. Develop sportsmanship skills and learn to be a team player.

July 13-17

Ages: 4-6	2001160
Ages: 7-10	2001185

Art Walk

Children will get a chance to put their creativity to work as they express themselves using paint, clay, oil pastels and more. Mix up the day with active play, fun games and exploration around the farm.

July 20-24

Ages: 4-6	2001163
Ages: 7-10	2001186

Splish, Splash

Get ready to get wet! Play sharks & minnows, run through the sprinklers and participate in wacky water relays. We will venture to Robinswood Park to join in at the annual water carnival, complete with an inflatable waterslide.

July 27-31

Ages: 4-6	2001161
Ages: 7-10	2001187

Nuts about Nature

Stay cool under the shade of the trees as we hike the Kelsey trails, discover local wildlife and create some nature-themed crafts. Campers will learn fun facts about rocks and minerals from a specialist with Geo Adventures.

Aug 3-7

Ages: 4-6	2001162
Ages: 7-10	2001188

Young Farmers

Gather eggs, get up close with the rabbits and learn what it takes to care for the smaller animals on the Farm. Create a squeakin' squawkin chicken craft and celebrate the warm summer days with an old-fashioned picnic in the park.

Aug 10-14

Ages: 4-6	2001164
Ages: 7-10	2001189



Robinswood Day Camp

Active play, imagination and creativity in a safe and caring environment. Trained and competent staff in a small group setting. Each week will bring a variety of new and different activities.

Location: Robinswood Park

Ages: 4-7

Fees: \$210 (R) \$252 (N)

***Adjusted fees for weeks: Jun 23-26 & Jun 29-Jul 2 / \$168 (R) \$202 (N)**

Extended Care Available: 8:30am-5:30pm

Fees: \$75 (R) \$90 (N)

***Adjusted fees Jun 29-Jul 2: \$60 (R) \$72 (N)**

Hours/Dates: Monday-Friday, 9:30am-3pm

Animal Planet

Do you love animals? This week is all about our furry, feathery friends. We will learn how to care for pets and go on a special excursion to Lewis Creek park. We will meet the park ranger, learn about local wildlife and enjoy a visit from the Humane Society's MaxMobile.

Jun 23-26* 2001194 (No extended care offered this week)

World of Make Believe

Your favorite stories and super heroes will come to life as we create crafts, play games and act out stories that will tickle the imagination. This week will include an interactive and educational presentation by the "Parrot Lady" and her talented trick birds.

Jun 29-Jul 2* 2001195

Ooey, Gooey Science Fun

Open the door to the world of science. Mix up some wacky experiments and see what cool concoctions you can make. This week campers will participate in a hands-on discovery workshop provided by a special guest from "Mad Science".

Jul 6-10 2001196

Tag, You're It

Get ready for some non-stop fun all week long. Run relays, challenge yourself through an obstacle course and participate in a variety of active sports and games. This week will include a field trip to Kelsey Creek Farm for camp-wide Olympics.

Jul 13-17 2001197

Paint a Rainbow

This week, camp is all things art. Children will get a chance to put their creativity to work. There will be fun projects that enable the campers to express themselves using paint, clay, oil pastels and more. Mix up the day with active play and fun games.

Jul 20-24 2001198



Wonderful Water!

Turn on the hose, grab a towel and celebrate the long hot summer daze. Get ready to get WET! Enjoy a water carnival with the Kelsey Creek Farm campers, complete with an inflatable waterslide.

Jul 27-31

2001199

A Walk in the Woods

Explore the wild world of bugs and other creatures that call Robinswood Park their home. Go on a scavenger hunt in search of hidden treasures. Campers will enjoy a special visit from Geo Adventures. Learn how to test fossils or minerals with the same tools as a professional geologist.

Aug 3-7

2001200

Tropical Explosion

Catch a wave and spend a week in a tropical paradise. Use sand and sea shells to create beachy scenes, play some island games and learn about undersea creatures. This week will include a field trip to a local beach where campers can create sandcastles and cool off in the water.

Aug 10-14

2001201

Farm Friends

Focus on a different farm animal each day. Take a trip to Kelsey Creek Farm, help with barn chores and get up close with the animals. End the week with an old-fashioned summer picnic in the park.

Aug 17-21

2001202

Go Go with Van Gogh Art Camp

Fine arts on the farm, inspired by the Kelsey Creek Farm environment. Your elementary-school child will celebrate their individual creative expressions through exploration of multiple-medias. Paint with colorful acrylics, sketch on the farm, develop watercolor style with color theory exploration, sculpting with molding clay, create collages, and use oil pastels too. Dress for creative mess and bring your playful imagination. Instructor Diane Culhane is a renowned artist in the Pacific Northwest with a master's degree in Art Education and extensive teaching experience. Her work is represented in galleries and shows across the country.

Ages: 6-11

Fees: \$315 (R) \$378 (N)

***Adjusted fees for weeks: Jun 23-26 & Jun 29-Jul 2 / \$252 (R) \$302 (N)**

Extended Care Available: 7:30am-5:30pm

Fees: \$96 (R) \$115 (N)

***Adjusted fees Jun 29-Jul 2: \$77 (R) \$92(N)**

Hours/Dates: 9:30am-3pm

Monday-Friday

Jun 23-26*	2010922
Jun 29-Jul 2*	2010923
Jul 6-10	2010924
Jul 13-17	2010925
Jul 27-31	2010926
Aug 3-7	2010927
Aug 10-14	2010928
Aug 17-21 (no extended care available)	2010929

Little Farmers Camp

Explore our farm full of animals with Farmer Jayne. We'll meet a different animal each day and 'work' on barn chores, feeding and petting. Add in 'play' with crafts and child-made snacks for a busy week. This special half-day camp will have your child loving our chickens, goats, cows, pigs, and rabbits. Farmer Jayne combines 25 years of early childhood education experience with her knowledge of animals to actively engage children in the joys of farm life.

Ages: 4-6

Fees: \$163 (R) \$196 (N)

***Adjusted fees Jun 29-Jul 2: \$130(R) \$157 (N)**

Hours/Dates: 10am-1pm

Monday-Friday

Jun 8-12	2010862
Jun 15-19	2010863
Jun 29- Jul 2 (M-Th)*	2010864
Jul 6-10	2010865
Aug 3-7	2010866
Aug 17-21	2010869

Ages: 5-7

Fees: \$250 (R) \$300 (N)

Hours/Dates: 10am-3pm

Monday-Friday

Jul 13-17	2010867
Aug 10-14	2010868



The Great Kelsey Baking Camp

Join Mrs. Kandi in the Farm House for the Great Kelsey Baking Camp. We will bake and decorate cookies, cupcakes, pie, and a small cake. Experience royal frosting, fondant, buttercream, and put them together to make a farm-themed masterpiece. We will visit a different animal daily to get inspiration for our work. Please bring your lunch and an apron to camp.

Ages: 6-11

Fees: \$250 (R) \$300 (N)

*** Adjusted Fees Jun 23-26 / \$200 (R) \$240 (N)**

Hours/Dates: 9:30am-2pm

Monday-Friday

Jun 23-26*	2011201
Jul 20-24	2011202
Aug 17-21	2011203

Crazy Kitchen Science at Kelsey Creek

Join Mrs. Kandi in the Farm House for a week of Crazy Kitchen Science. We will teach kids several recipes that use different cooking skills to transform ingredients into a yummy finished product that you will take home each day, plus a daily visit to the resident animals at the Farm. Please bring your lunch and an apron to camp.

Ages: 6-11

Fees: \$250 (R) \$300 (N)

Hours/Dates: 9:30am-2pm

Monday-Friday

Jul 6-10	2011242
Aug 3-7	2011243

Kelsey Creek Farm Kitchen Basics

Join Mrs. Kandi in the Farm House for a week of Kitchen Basics. We will learn knife skills, baking, food preservation, and farm to table cooking. We will spend time with the resident farm animals too! Also, each day, take home your creations and the recipe to recreate your masterpieces. Please bring your lunch and an apron.

Ages: 6-11

Fees: \$250 (R) \$300 (N)

***Adjusted fees Jun 29-Jul 2: \$200 (R) \$240 (N)**

Hours/Dates: 9:30am-2pm

Monday-Friday

Jun 29-Jul 2 (M-Th)*	2011261
Jul 27-31	2011262
Aug 24-28	2011263



Cartooniversity Day Camp

A unique opportunity for kids ages 9-14 to explore the art of cartooning with professional cartoonist/humorous illustrator Jeff Johnson. Multiple projects and a positive, encouraging, classroom environment make this one-of-a-kind cartooning class fun and exciting. Areas of study include expression, action/movement, character development, layout, backgrounds, perspective, lettering and much more. The emphasis is on developing each student's own style. All materials included! Bring a water bottle and a sack lunch each day.

Ages: 9-14

Fees: \$350 (R) \$420 (N)

Days/Hours: 10am-3pm

Monday-Friday

Jul 20-24 2011072

Aug 17-21 2011073

Aug 24-28 2011074

Summer Private Horseback Riding Lessons

Kelsey Creek Farm's private riding lessons allow your child to work one-on-one with our riding instructor to deepen your child's understanding of horsemanship and develop foundational riding skills. Each one-hour lesson includes brushing and saddling your pony, groundwork, and riding time. Skills taught include mounting, steering, backing, proper balance, and posting at the trot.

Ages: 4-5

Fees: \$233 (R) \$279 (N)

Hours/Dates: Monday-Friday

Jul 6-10

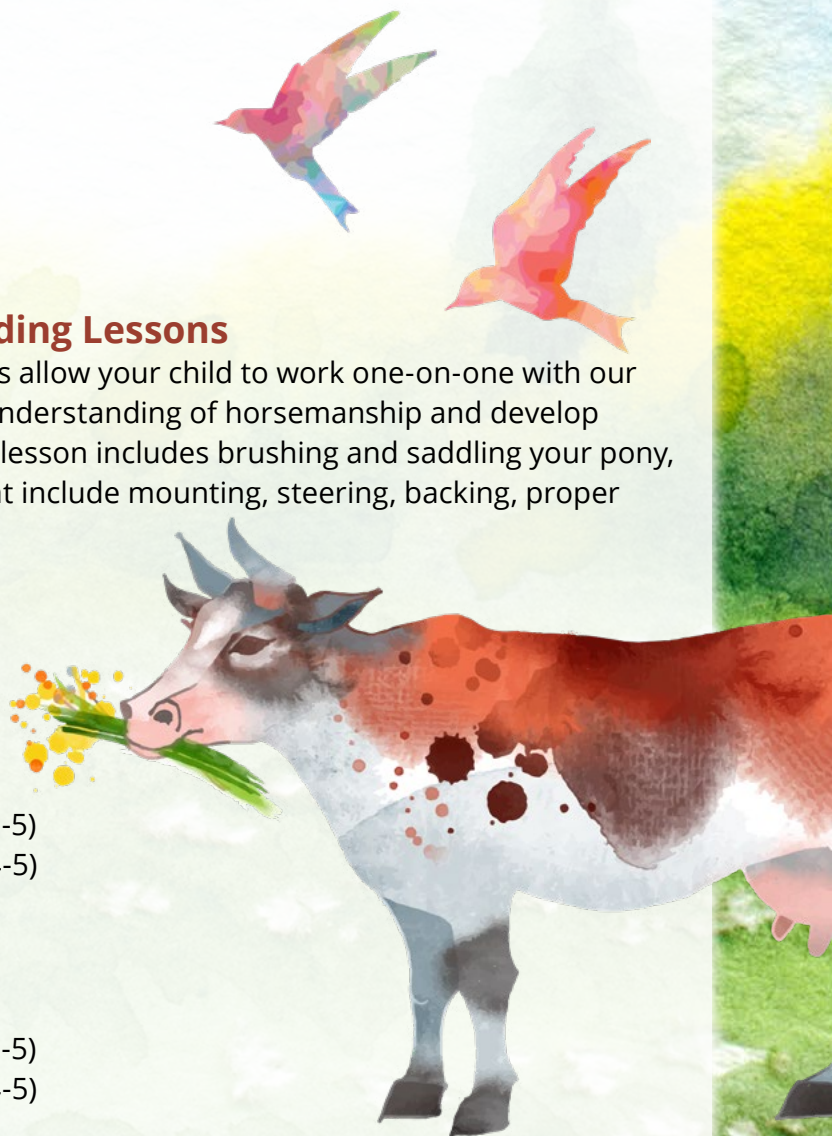
10-10:45am	2017001 (Age: 4)
11-11:45am	2017002 (Age: 4)
1-1:45pm	2017003 (Ages: 4-5)
2-2:45pm	2017004 (Ages: 4-5)

Jul 13-17

10-10:45am	2017005 (Age: 4)
11-11:45am	2017006 (Age: 4)
1-1:45pm	2017007 (Ages: 4-5)
2-2:45pm	2017008 (Ages: 4-5)

Jul 20-24

10-10:45am	2017009 (Age: 4)
11-11:45am	2017010 (Age: 4)
1-1:45pm	2017011 (Ages: 4-5)
2-2:45pm	2017012 (Ages: 4-5)



Jul 27-31

10-10:45am	2017013 (Age: 4)
11-11:45am	2017014 (Age: 4)
1-1:45pm	2017015 (Ages: 4-5)
2-2:45pm	2017016 (Ages: 4-5)

Aug 3-7

10-10:45am	2017017 (Age: 4)
11-11:45am	2017018 (Age: 4)
1-1:45pm	2017019 (Ages: 4-5)
2-2:45pm	2017020 (Ages: 4-5)

Aug 10-14

10-10:45am	2017021 (Age: 4)
11-11:45am	2017022 (Age: 4)
1-1:45pm	2017023 (Ages: 4-5)
2-2:45pm	2017024 (Ages: 4-5)

Pony Day Camp

Experience a full week packed with pony activities at Kelsey Creek Farm. Assist in grooming, saddling, care and feeding. This week's camp will include; pony rides, equine craft projects and games. End the week with a western style cookout. Trained staff will provide a safe and supportive environment in a small group setting.

Ages: 4-5

Fees: \$350 (R) \$420 (N)

Hours/Dates: 10am-3pm

Monday-Friday

Aug 17-21	2012151
Aug 24-28	2012152

Teen & Adult Activities

Make Cinnamon Rolls at the Farm

Join Kandi in the Farmhouse and learn the process of making cinnamon rolls from scratch. You will leave with a pan of cinnamon rolls, the recipe, and the confidence to make them at home.

Ages: 16 and up

Fees: \$30 (R) \$36 (N)

Hours/Dates: 7-8:30pm

Friday

May 1	2000333
-------	---------



Historical Walking Tour

Learn about the history of Kelsey Creek Farm during this one-hour walking tour of the park. In the 1920s and 1930s, this land was a working dairy farm that housed thirty cows and provided Bellevue residents with milk, cream, and butter. We'll put the story in the context of Bellevue's early development. We will tour inside both barns, visit some of the farm animals, and compare historic pictures of Twin Valley Dairy to the park as it is now. The program is designed for adults and teenagers.

Ages: 12 and up

Fees: Free

Hours/Dates: 1:30-2:30pm

Saturday

Jun 20

2001064

Bats at Twilight

Discover bats and the important role they play in Bellevue's ecology. Bats Northwest will teach us about the bats that live in the Pacific Northwest and beyond. After dusk, we will scan the evening skies to see the bats that live at Kelsey Creek Park and use a bat detector to see and hear the resident bats at work. Appropriate for teenagers and adults. Children must be accompanied by an adult.

Ages: 12 and up

Fees: Free

Hours/Dates: 7:30-9pm

Friday

Aug 28

2002229



Volunteer Opportunities

Kelsey Creek Summer Volunteers

Volunteers will help with the animal chores, learn responsible animal care and assist in summer programs in this week-long program at Kelsey Creek Farm. Qualifications include: understanding and following directions, ability to be on your feet for a physically active day, responsible around children, tolerance for being outside and working in a farm environment near animals, hay, vegetation and dust. Volunteers are required to start on Monday, complete a Criminal Background check and provide their Social Security number. Limit 1 (ONE) volunteer session per participant per summer.

Ages: 12-18

Fees: \$15 (R) \$18 (N)

Hours/Dates: 8:30am-4pm

Monday-Friday

Jul 6-10 (Ages: 14-18)	2018285
Jul 13-17 (Ages: 12-14)	2018286
Jul 20-24 (Ages: 14-18)	2018287
Jul 27-31 (Ages: 12-14)	2018288
Aug 3-7 (Ages: 14-18)	2018289
Aug 10-14 (Ages: 12-14)	20182810

Kelsey Creek Summer Art Volunteers

Volunteers will assist the Go Go with Van Gogh art camp instructor and children ages 6-11 with daily classroom activities. Qualifications include but are not limited to: attentive supervision during assigned activities, establish relationships with campers based on genuine interest and mutual respect, provide a positive role model for campers by exhibiting an upbeat, cooperative, and friendly attitude at all times, help campers learn and follow rules to ensure a safe and healthy environment, be punctual, organized, and follow directions, excellent verbal communication skills. Volunteers are required to start on Monday, complete a Criminal Background check and provide their Social Security number. Limit 1 (ONE) volunteer session per participant per summer.

Ages: 15 -18

Fees: \$15 (R) \$18 (N)

Hours/Dates: 9:15am-3:15pm

Monday-Friday

Jun 23-26	2016882
Jun 29-Jul 2	2016883 (M-Th)
Jul 6-10	2016884
Jul 13-17	2016885
Jul 27-31	2016886
Aug 3-7	2016887
Aug 10-14	2016888
Aug 17-21	2016889



Little Farmers Camp Volunteers

Volunteers will assist Farmer Jayne and children ages 4-7 with daily activities as they explore farm life with animal chores, games and crafts at Kelsey Creek Farm. Qualifications include but are not limited to; attentive supervision during assigned activities, establish relationships with campers based on genuine interest and mutual respect, provide a positive role model for campers by exhibiting an upbeat, cooperative, and friendly attitude at all times, help campers learn and follow rules to ensure a safe and healthy environment, be punctual, organized, and follow directions, excellent verbal communication skills. Volunteers are required to start on Monday. Limit 1 (ONE) volunteer session per participant per summer.

Ages: 13-18

Fees: \$15 (R) \$18 (N)

Hours/Dates: 9:30am-1:30pm

Monday-Friday

Jun 29-Jul 2 (Ages: 13-18)	2016893 (M-Th)
Jun 29-Jul 2 (Ages: 14-18)	2016894 (M-Th)
Jul 6-10 (Ages: 13-18)	2016895
Jul 6-10 (Ages: 14-18)	2016896
Aug 3-7 (Ages: 13-18)	2016899
Aug 3-7 (Ages: 14-18)	20168910
Aug 17-21 (Ages: 13-18)	20168913
Aug 17-21 (Ages: 14-18)	20168914

Hours/Dates: 9:30am-3:30pm

Monday-Friday

Jul 13-17 (Ages: 13-18)	2016897
Jul 13-17 (Ages: 14-18)	2016898
Aug 10-14 (Ages: 13-18)	20168911
Aug 10-14 (Ages: 14-18)	20168912



Kelsey Cooking Camp Volunteer

Volunteers will assist the camp instructor and children ages 5-11 with daily activities. Qualifications include but are not limited to; attentive supervision during assigned activities, establish relationships with campers based on genuine interest and mutual respect, provide a positive role model for campers by exhibiting an upbeat, cooperative, and friendly attitude at all times, help campers learn and follow rules to ensure a safe and healthy environment, be punctual, organized, and follow directions, excellent verbal communication skills. Volunteers are required to start on Monday, complete a Criminal Background check and provide their Social Security number. Limit 1 (ONE) volunteer session per participant per summer.

Ages: 12-18

Fees: \$15 (R) \$18 (N)

Hours/Dates: 9am-3pm

Monday-Friday

Jun 23-26	2016872
Jun 29-Jul 2	2016873 (M-Th)
Jul 6-10	2016874
Jul 20-24	2016875
Jul 27-31	2016876
Aug 3-7	2016877
Aug 17-21	2016878

Pony Camp Volunteers

Work directly with staff and camp participants in the Pony Camp program at Kelsey Creek Farm. Qualifications include but are not limited to: attentive supervision during assigned activities, comfortable working with horses and children, understanding and following directions, ability to be on your feet for a physically active day, tolerance for being outside and working in a farm environment near animals, hay, vegetation and dust. Volunteers will be required to attend one of the mandatory training sessions and must pass a skills test in order to qualify to volunteer for the session which they registered. **Session #1** Monday, Aug 10 and Tuesday, Aug 11, 9:30am-1pm, OR **Session #2** Wednesday, Aug 12 and Thursday, Aug 13, 3-6:30pm. Volunteers are required to start on Monday, complete a Criminal Background check and provide their Social Security number. Limit 1 (ONE) volunteer session per participant per summer.

Ages: 14-18

Fees: \$15 (R) \$18 (N)

Hours/Dates: 9:30am-3pm

Monday-Friday

Aug 17-21	2018432
Aug 24-28	2018433

Birthday Parties

Kelsey Creek Farm offers a variety of party packages to make your child's day special and give them an enriched educational experience. All party packages are two hours long. Each party begins with group activity led by a member of our farm team and is followed with a one-hour room rental for cake and presents. The locations of the room vary with the type of party, but all locations are indoors and include: 3 preschool-height tables (6-foot-long by 2.5-foot-wide) with children's chairs, a refrigerator/freezer, kitchen sink and trash cans. A restroom with hand-washing soap and paper towels is also available.

- **Ages: 2-11**
- **Fees:** \$200 (R) and \$220 (N), up to 10 children. Additional children-\$10/each (5 max additional children)
- **Times:** 10am-noon OR 12:30-2:30pm
- **Maximum Capacity** for all parties is 30 people and has been set to respect facility codes, the safety and wellbeing of the animals, and to ensure guest enjoyment. Total party size limited to 30 people with a maximum of 15 children (no exceptions).

Bunny Birthday Party

Celebrate your child's birthday by visiting the farm and meeting our friendly bunny. Enjoy a farm walk, a bunny craft, and special time with the birthday bunny. Package includes Bunny activities and a farm walk, followed by one hour of room rental.

Chicken Birthday Party

Celebrate your child's birthday by visiting the farm and meeting our friendly chicken. Enjoy a farm walk, a chicken craft, and special time with the birthday chicken. Package includes Chicken activities and a farm walk, followed by one hour of room rental.

Duck Birthday Party

Celebrate your child's birthday by visiting the farm and meeting our friendly duck. Enjoy a farm walk, a duck activity and special time with the birthday duck. Package includes: Duck activities and farm walk, followed by one hour of room rental.

Farm Birthday Party

Celebrate your child's birthday with a visit to our historic farm. Make memories learning about sheep, rabbits, pigs, chickens and ponies. Tour inside our 1930's era dairy barn to learn local lore, too. Package includes a farm tour and craft time, followed by one-hour room rental.



Farm Tours for Schools and Groups

Experience the Farm with a tour designed specifically for groups. Tour themes vary by season. Tours are available weekdays and are approximately one hour in length.

- **Ages:** Most tours appropriate for children ages 2+.
- **Fees:** \$90 (15 or fewer people, children & adults. Addt'l attendees: \$6 per child & \$2.50 per adult. Staff are free.)

Kids on the Farm Group Tour / Available January-April

Explore our farm with hands-on fun as you meet our goats, sheep, rabbits, chickens and ponies. Learn interesting animal facts then move inside to experience the old-fashioned skill of wool carding. Children create fuzzy sheep to take home.

Springtime in the Barnyard Group Tour / Available May only

Welcome springtime with a tour of our animals, which may include chicks, goat kids, piglets and a calf. Learn about their special care then finish up with planting pumpkin seeds in the garden.

Fall at the Farm Group Tour/ Available October only

Experience harvest season in a traditional way. Visit a pony and pig. Work on barn "chores" with child-sized pails and rakes. Tour the garden and pumpkin patch. Children finish up by choosing a pumpkin from our harvest-themed indoor pumpkin patch! Extra fee for pumpkins.

Pioneer Days Group Tour / Available November only

Imagine life in the 1880's in our authentic log cabin. Children participate in activity stations learning to grind wheat and coffee, churn butter, hammer nails, pump water, play dress up, and engage in more living history skills. Storytelling about pioneer life with Laura Ingalls Wilder's Little House books helps children compare their life based on electricity and modern conveniences with the life of Laura and Mary.



CRITTER ADOPTIONS

The animals at Kelsey Creek Farm are an essential part of our community's education and enjoyment. Your support helps maintain these animals in a natural farm setting. Become a Kelsey Creek Critter Sponsor! Simply call for an application; care and custody of your critter stays with Kelsey Creek Farm. You can adopt any of the following farm animals: pony, pig, sheep, goat, cow, rabbit, and chicken. Adoption levels are available from \$25 for Best Friend to \$200 for Grandparent.

FARM HISTORY

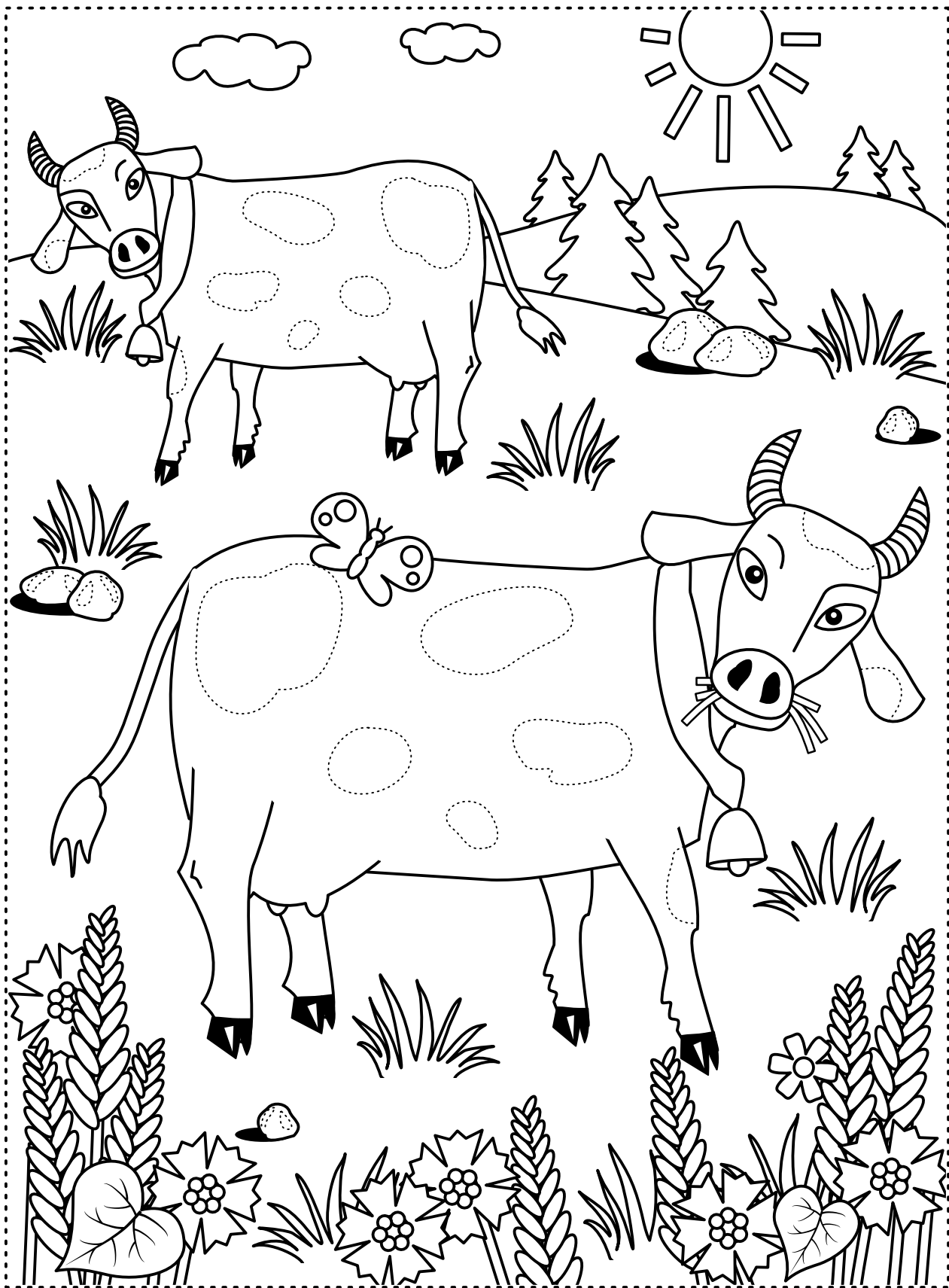
The farm's history began in 1921, when the Duey Family rented 190 acres and began delivering cream and butter stamped with the name Twin Valley Dairy. In August of 1933 the original barn burned. Mr. Duey, a skilled carpenter, along with some hired hands, rebuilt the barn in two weeks. Today, this barn is the smaller of the two barns and is called the Animal Barn. Mr. Duey also built the Red Barn, originally used as a milk house.

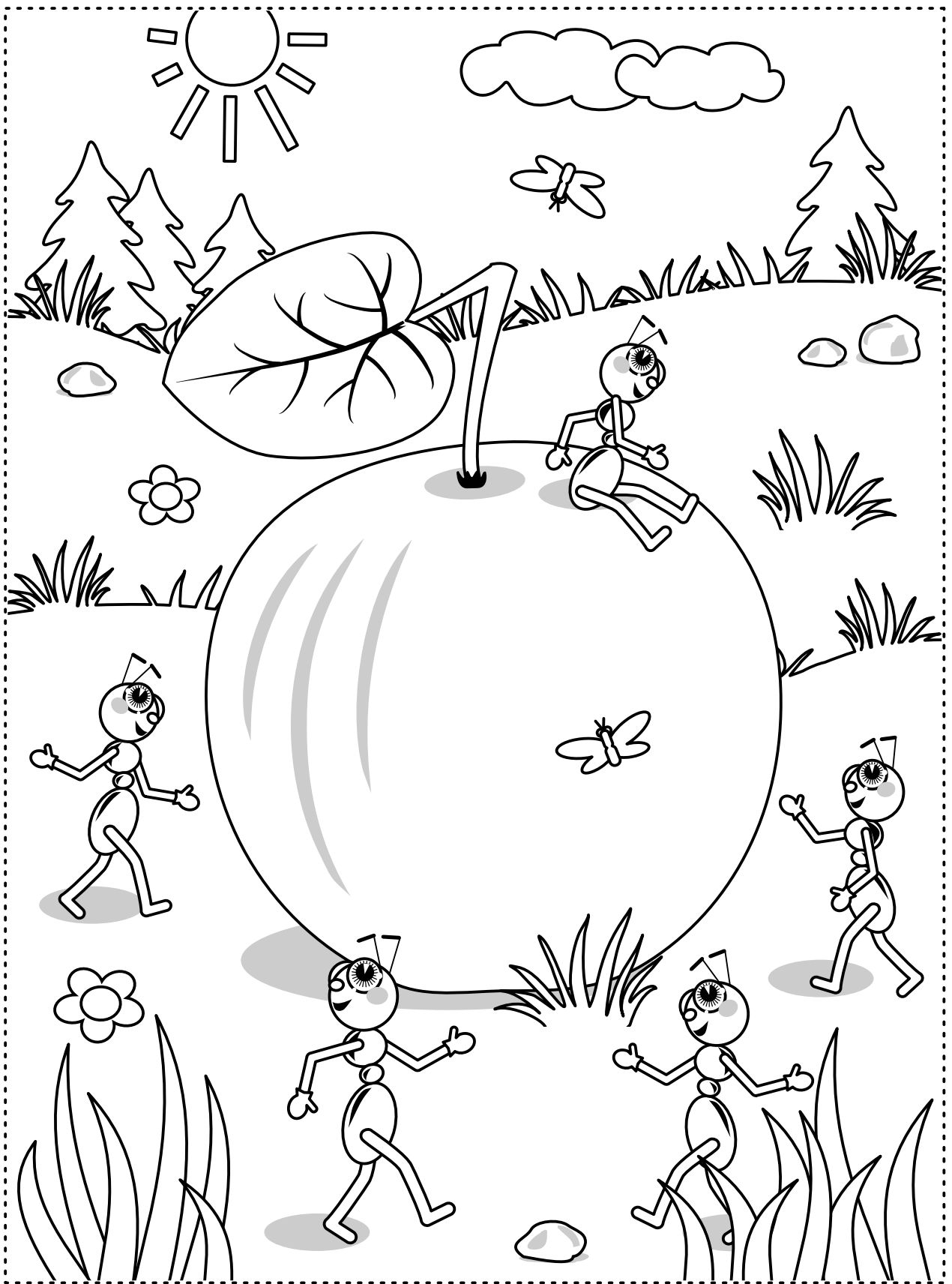
The second dairy barn was built in 1943-44 by Mr. Michaels, the new owner, (this is the north barn now known as the Education Barn) and the dairy herd was increased in size. After the end of WWII, he sold the farmstead to Ray and Nettie Fisher. The Fishers phased out the dairy operation and began raising Hereford beef cattle. They built the current farm house in 1954 and moved to live on the property.

In 1968 neighbors to the farm began a movement to petition the Bellevue City Council to purchase the property and secure it as a public park. The neighbors' petition succeeded, and the City negotiated with the Fisher family to purchase the 80 acres, including the farm house, barns and out buildings. The Fishers sold their farm property to the City at a price much reduced from what they knew that they could get from developers. They did so because they believed in preserving the beauty and legacy of the agricultural buildings and the land.

In 1972 the oldest barn was modified to house an assortment of farm animals for public viewing. The other, larger barn, commonly referred to as the Education Barn, was remodeled inside and used to accommodate a variety of community programs, including children's day camps, art classes, and farm-themed classes, to name just a few.









Bellevue Parks & Community Services

Kelsey Creek Farm

410 130th Pl SE, Bellevue, WA 98005

425-452-7688 • KelseyCreekFarm@bellevuewa.gov

REGISTER ONLINE!

register.bellevuewa.gov

Scholarships available for many programs



For alternate formats, interpreters, or reasonable accommodation requests please phone at least 48 hours in advance 425-452-4253 (voice) or email asolomonson@bellevuewa.gov. For complaints regarding accommodations, contact City of Bellevue ADA/Title VI Administrator at 425-452-6168 (voice). If you are deaf or hard of hearing dial 711. All meetings are wheelchair accessible.

