



# High Quality Built and Natural Environment

January 3  
**2020**

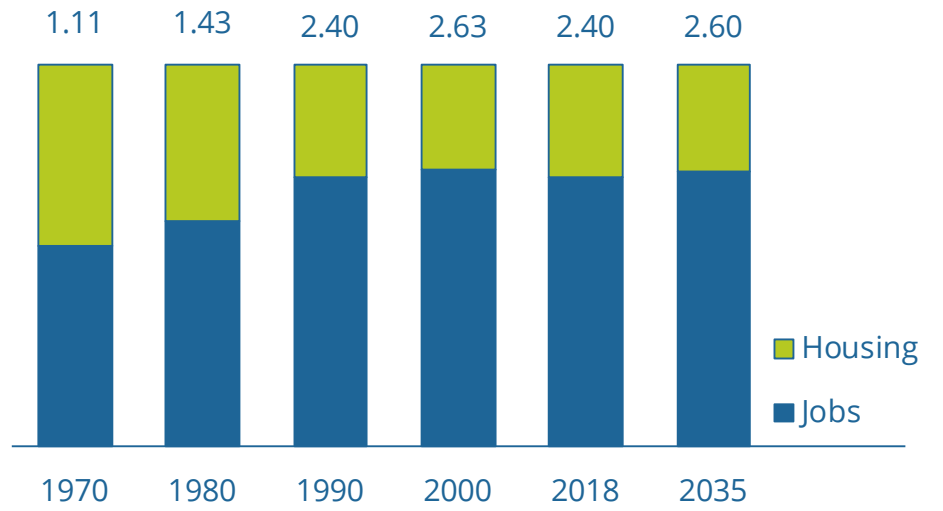
Neighborhoods and businesses transcend age, ethnicity and culture to create safe, welcoming places to live & work.

**73%**  
Live within  
1/3 mile of a  
park, trail or  
open space

**809 sq.ft.**  
of urban forest &  
natural areas  
per resident

**94%**  
+/- 2%  
of households  
with internet access

## Jobs-Housing Ratio

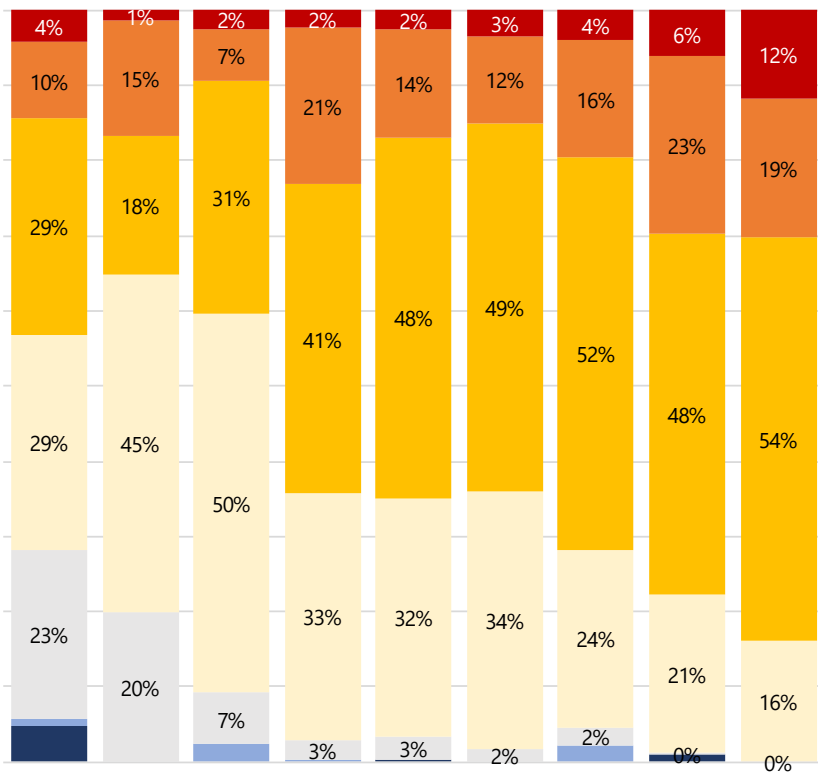


Source: City of Bellevue. 2019. Environmental Stewardship Initiative Strategic Plan Update; Washington State Office of Financial Management. 2019 April 1 Population Estimates. Calculations of distance to parkland made by Community Development staff based on US Census Bureau. 2013-2017 American Community Survey (5-year estimates), table B28002.

Source: Puget Sound Regional Council. 2019 Special Tabulation: Total Employment 1970-2019; Washington State Office of Financial Management; US Census Bureau. 2018 American Community Survey (1-year estimates), table DP04.

## Housing by Year Built

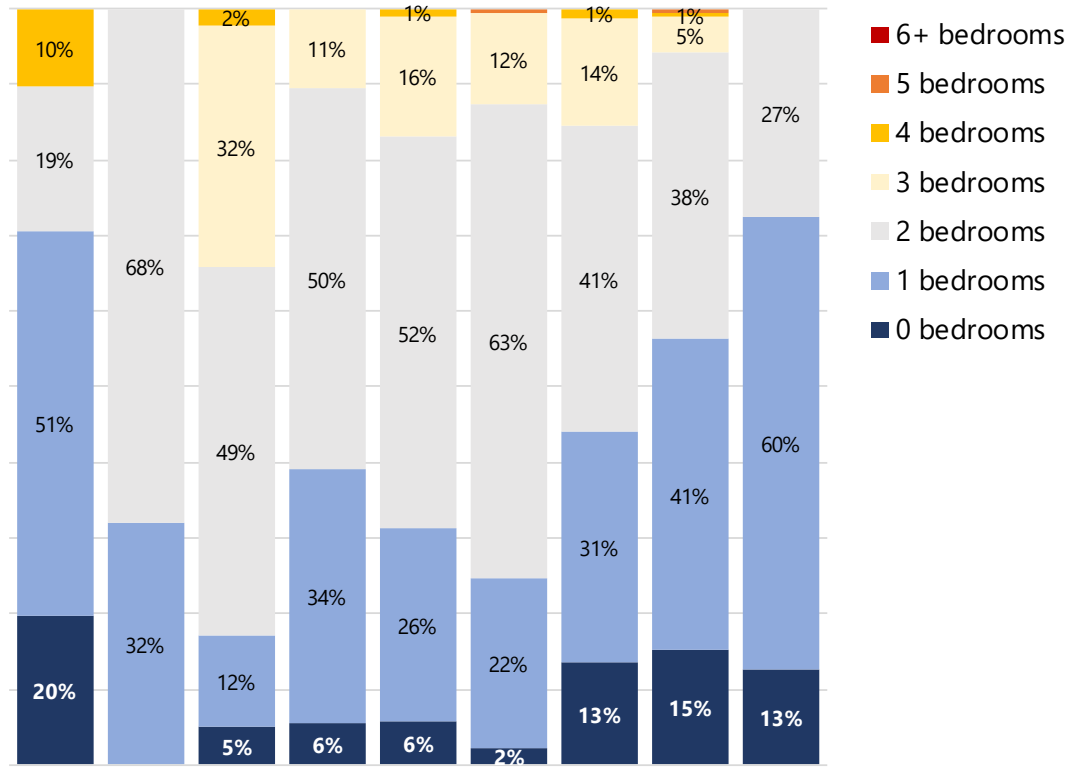
### Single Family



Before 1940s 1950s 1960s 1970s 1980s 1990s 2000s 2010+

US Census Bureau. Integrated Public Use Microdata Sample. 2013-2017 ACS, 5% sample.

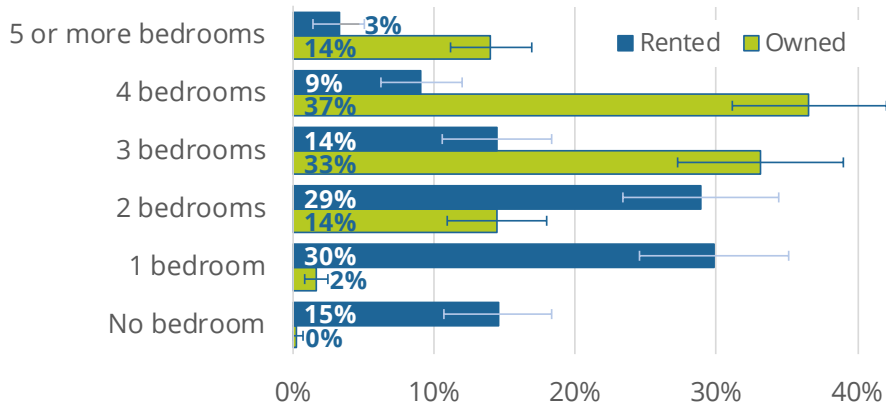
### Multi-family



Before 1940s 1950s 1960s 1970s 1980s 1990s 2000s 2010+

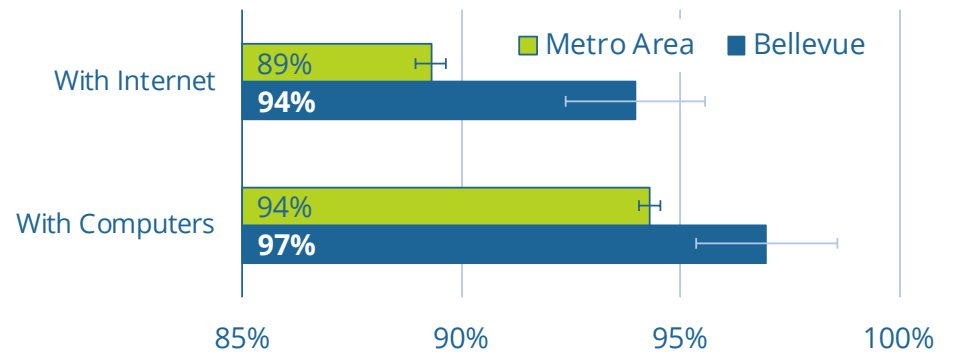
US Census Bureau. Integrated Public Use Microdata Sample. 2013-2017 ACS, 5% sample.

## Number of Bedrooms in Housing Units



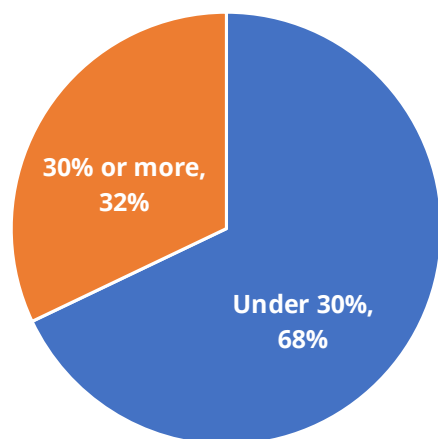
Source: US Census Bureau. 2018 American Community Survey (1-year estimates), table B25042.

## Household Technology Access



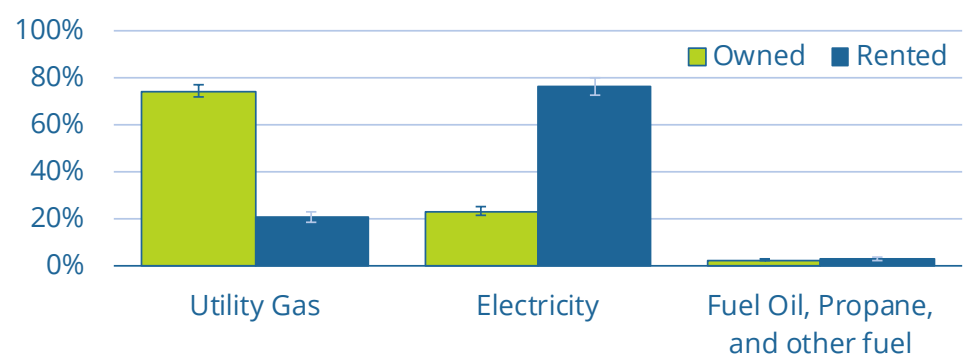
Source: US Census Bureau. 2014-2018 American Community Survey (5-year estimates), tables B28003 & B28002.

## Household Monthly Housing Costs as a Percent of Income



Source: US Census Bureau. 2014-2018 American Community Survey (5-year estimates), table DP04.

## Heating Fuel by Tenure



Source: US Census Bureau. 2014-2018 American Community Survey (5-year estimate), table B25117.