

Bellevue Utilities

Capital Investment Plan Overview



PHOTO: DAVID JOHANSEN VASQUEZ

“The **mission of Bellevue Utilities** is to actively support public health and safety, quality neighborhoods, and a healthy and sustainable environment and economy by effectively managing drinking water, wastewater, storm and surface water and solid waste”



Bellevue Utilities Provides

- High quality drinking water, sewer, and stormwater drainage services that sustain your quality of life
- Of the average \$6.02 a day for Bellevue utility services, \$1.80 (30%) pays for capital investments, as presented in this proposed Capital Investment Plan for Years 2021-2027
- Your rates support:
 - Delivery of high quality drinking water
 - Streams, lakes, and wetlands free from raw sewage
 - Pollution reduction in stormwater runoff
 - Protection of public health and safety by preventing flooding and sewer backups



What is the Capital Investment Plan (CIP)

- 7-year Plan updated every 2-years as part of the City's biennial budget process
- Water, Wastewater, and Stormwater Improvement Projects
- Activities include:
 - Project planning, design, and construction
 - Property acquisition when needed
 - Rehabilitation and replacement projects
 - Service enhancement projects
 - Expansion/growth projects



Why Are Capital Investments Important?

- *Maintain reliable services through the renewal/replacement of aging utility infrastructure*
- *Support growth and development of the City*
- *Provide environmental stewardship*
- *Ensure excellent utility services*



Bellevue Utilities Manages over \$4 Billion Dollars of Utility Assets

DRINKING WATER



606 miles of water mains
40,000+ water connections
24 Reservoirs
22 Pump Stations
5800+ fire hydrants

WASTEWATER



516 Miles Mainline Pipes
13,000+ Maintenance Holes
120 miles of lateral sewer pipes
47 pump and flush stations

STORM AND SURFACE WATER



408 miles of storm pipes
21,385 public storm drains
11 regional detention facilities
350+ city owned regional facilities



Your Utility Dollars at Work

Major Program Areas in 2021-2027 CIP

DRINKING WATER

Renewal/Replacement Aging Infrastructure

Water Main Replacements
Reservoir Rehabilitation
Pump Station Rehabilitation
System Controls

Capacity for Growth

New Inlet Station
Reservoir Siting
New Water Mains

Service Enhancements

Operations and
Maintenance Yard

WASTEWATER

Renewal/Replacement Aging Infrastructure

Sewer Pipeline Repairs
and Replacement
Pump Station
Rehabilitation
System Controls

Condition Assessments
Lakeline Sewer Planning

Capacity for Growth

Pump Station Upgrades

Service Enhancements

Operations and
Maintenance Yard

STORM AND SURFACE WATER

Renewal/Replacement Aging Infrastructure

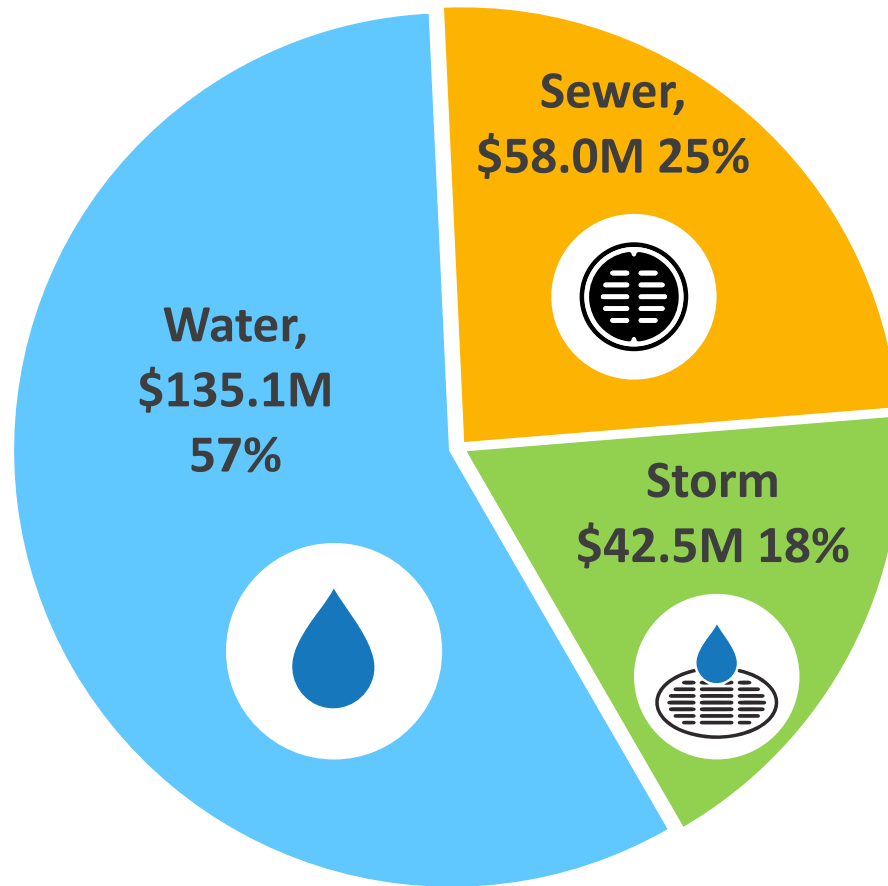
Storm Pipe Repair
Culvert Replacement
System Controls

Environmental Preservation

Flood Reduction
Culvert Replacement
Stream Improvements
Water Quality
Storm Water Planning



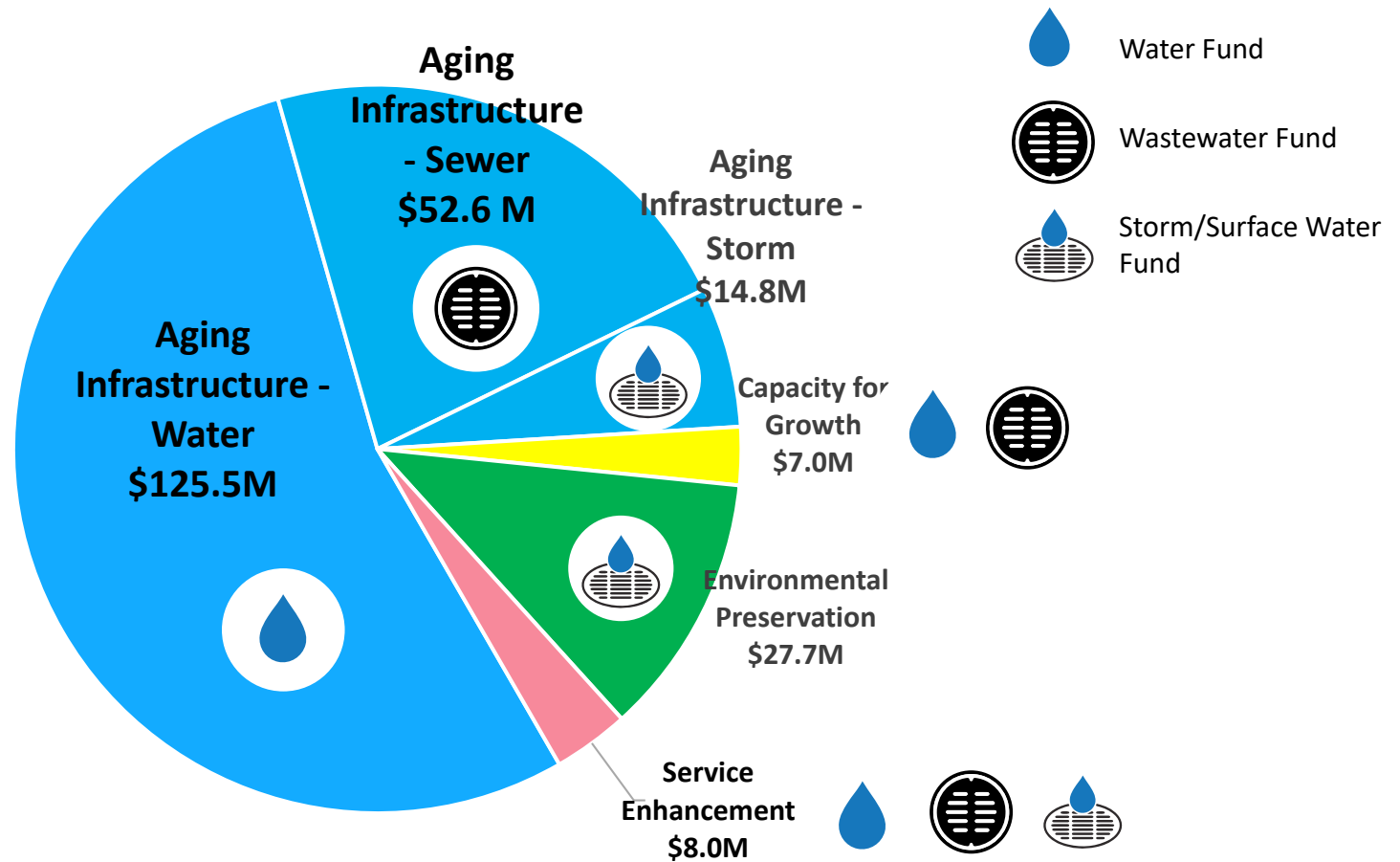
2021-2027 Capital Investments by Utility *\$236 Million*



CIP by Area of Investment

2021-2027

\$236 Million



For More Detailed Information
(click the links below):

[Bellevue Utilities Capital Projects](#)

[Bellevue Utilities 2019 Business Profile](#)

