

neighborhood news



February 2020

news for and about
Bellevue neighborhoods



**Celebrate the
10th Anniversary
of Cultural
Conversations!**

Pre-program reception, 6-7 p.m.

Storytelling and Conversation, 7-9 p.m.

Join with family, friends and neighbors for the annual evening of Cultural Conversations and a celebration of 10 years of connection. The evening will kick off with light refreshments on the concourse, followed by storytelling and table conversation.

"Just Between Us," is an invitation to lean in and bear witness to the cultural journeys of three Bellevue storytellers as they share how the "in-between" spaces in relationship, place and experience shaped who they are and what they stand for.

The Curry Belly Finds Home at Last

Tulika is a long-time local resident, originally from Mumbai India. Her story speaks to a shift in perspective about her home country that came with distance and time. In her years of self-discovery and embracing living in a different land so far away from her birthplace, she grew to both cherish her upbringing and use her voice to bring about change both here and abroad.

Child of an Immigrant

Fadumo, a Bellevue high school senior, will share her experiences growing up as a first-generation

Somali-American. She brilliantly forges her own path while staying true to her Muslim faith and her family's values.

The Bridge of Authenticity

Chris-Michael is recognized for his leadership skills. He grew up in Seattle and works in Bellevue. He has a unique experience of fitting in everywhere, because of not fitting in anywhere. His outlook on navigating life and identity inspires us to look within.

Cultural Conversations began formally in 2009-2010. The program was inspired by women who had a desire to increase their cultural awareness and build bridges of friendship within the growing community of diversity. Over the years, the group has grown from informal small meetings of women, to a program of storytelling, tea and conversation offered six times a year. An annual evening program was added to include men as storytellers and to reach a wider public audience.

The evening forum is free and open to the public. We welcome women and men, as well as children ages 13 and up. Parking on a first-come basis is available in the P2 level of the City Hall's parking garage, located off of 112th Avenue Northeast between Northeast 4th Street and Northeast 6th Street.

For alternate formats, interpreters or reasonable accommodation requests, please phone at least 48 hours in advance 425-452-6836(voice). For complaints regarding accommodations, contact City of Bellevue ADA/ Title VI Administrator at 425-452-6168(voice) or email ADATitleVI@bellevuewa.gov. If you are deaf or hard of hearing dial 711. All meetings are wheelchair accessible.

For more information and to RSVP please contact neighborhoodoutreach@bellevuewa.gov, 425-452-6836.

Subscribe to Neighborhood News electronically:
BellevueWA.gov/neighborhood-news

Neighborhood Enhancement Program: Crossroads

The project idea submission period is now open for the Crossroads Neighborhood Enhancement Program. The Neighborhood Enhancement Program is a capital improvements program that provides you and your neighbors with the opportunity to propose and select small-scale physical projects that improve your quality of life and enhance the character in your neighborhood area. The city has a budget of \$439,000 for Crossroads residents to spend on enhancement projects.

Don't miss the opportunity to let the city know what you'd like to see done in your neighborhood! If you live in the Crossroads area, send in your NEP project ideas. The submission deadline for ideas is Mar. 4.

Submit your ideas in two easy ways:

- **BY MAIL:** Return the prepaid Project Idea Request Card that all Crossroads residents received in the mail in late January.
- **ONLINE:** BellevueWA.gov/nep

There is no limit on the number of project ideas that you can submit, but all ideas must be received at City Hall or submitted online by Wednesday, Mar. 4.

NEP rotates through Bellevue's 14 neighborhood areas, serving two areas each year. To find out which NEP neighborhood area you call home, when NEP will be in your area, and how much funding your area has been allocated, please visit www.BellevueWA.gov/nep.

For more information about NEP, please contact Theresa Cuthill at tcuthill@bellevuewa.gov or 425-452-4186.



Neighborhood Leadership Gathering

"City Budgeting through a Neighborhood Lens"

Tuesday Feb. 25, 6:30-8:30 p.m.

City Hall, Room 1E-108

450 110th Avenue Northeast

Gather with other residents and get an inside look at the city budget process. Join Finance Director, Toni Call and her budget team as they present an overview of Bellevue's budget that puts the emphasis on community expectations for government services.

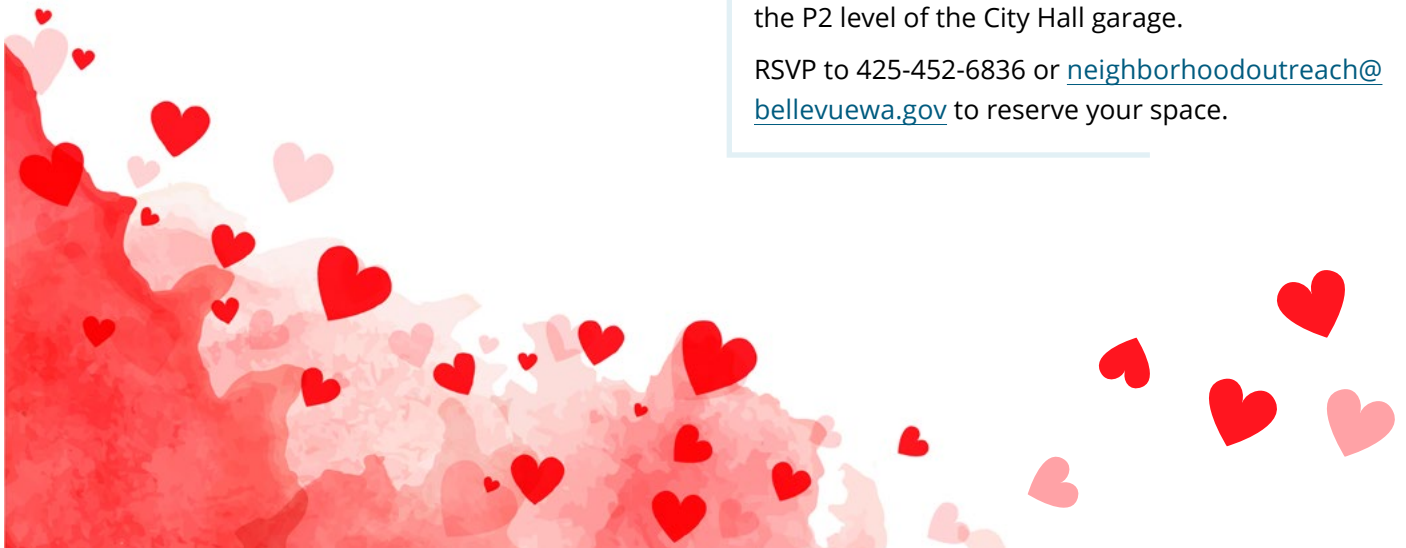
Bellevue's budget is produced every two years and includes a seven-year capital budget. This year, the city will adopt a budget for the 2021-22 General Budget and the 2021-2027 Capital Investment Program Plan.

The budget serves as a major policy document and describes how the city intends to finance its services and infrastructure. The city government is responsible for building and repairing roads, providing police and fire protection, as well as maintaining parks, open space and recreational centers, which help contribute to the high quality of life Bellevue residents enjoy.

You will learn about the city budget and provide your perspective on the city's budget priorities. Following an introduction to the budget process, participants will dive deep into a hands-on exercise and experience the challenge of making city budget decisions. Come and share YOUR priorities that the city should consider when preparing the budget.

Neighborhood Leadership Gatherings are open to all who are invested in the quality and health of their neighborhoods. Dessert and coffee will be served and parking is accessible from 112th Avenue Northeast, on the P2 level of the City Hall garage.

RSVP to 425-452-6836 or neighborhoodoutreach@bellevuewa.gov to reserve your space.



First mini-roundabout coming to downtown area

Construction is scheduled to begin as early as Feb. 17 on the city's first mini-roundabout in the downtown area, at the intersection of 100th Avenue Northeast and Northeast 10th Street, next to the Vuecrest neighborhood.

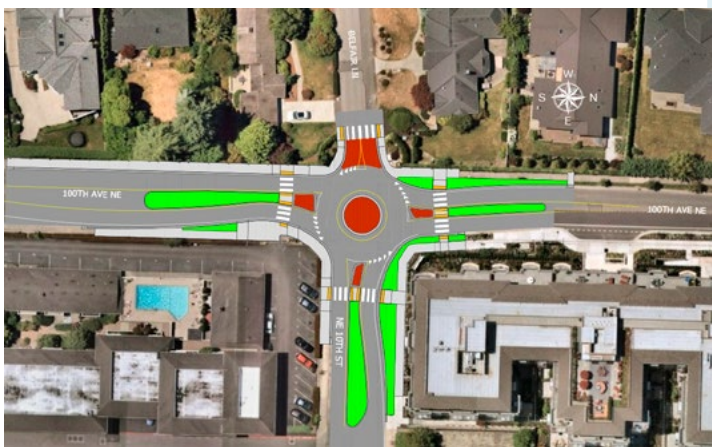
It will be the third mini-roundabout citywide; the others are located at 138th Avenue Southeast and Southeast 40th Street, and at 164th Avenue Southeast and Southeast Newport Way.


The newest roundabout will replace a four-way stop at the intersection; it's expected to help reduce collisions and improve pedestrian safety.

Construction is expected to run through May. During that time, the intersection will be closed for approximately 28 consecutive calendar days to accelerate construction. Intersection closure dates will be posted on project signs prior to the start of construction and detours will be in place during the closure.

There will also be lane closures at times. Whether it's a full intersection closure or a lane closure, please follow flaggers' instructions and traffic control signs.

For the latest information on closure dates and times, check the city's traffic advisories webpage at BellevueWA.gov/trafficadvisories. More information is on the project webpage: BellevueWA.gov/100thavecompletestreets.



 For alternate formats, interpreters, or reasonable accommodation requests please phone at least 48 hours in advance 425-452-2735 (voice) or email mheilman@bellevuewa.gov. For complaints regarding accommodations, contact City of Bellevue ADA/Title VI Administrator at 425-452-6168 (voice) or email ADATitleVI@bellevuewa.gov. If you are deaf or hard of hearing dial 711. All meetings are wheelchair accessible.

Getting to know the Bellevue Network on Aging

The mission of the Bellevue Network on Aging is to promote healthy aging in our community through awareness of needs and resources to support older adults through life's transitions. During 2020, our committees will be working on several ways to improve life for seniors in Bellevue. Watch for helpful tips and topics of interest to the community, and visit the Bellevue Network on Aging website for helpful information:

BellevueWA.gov/city-government/departments/city-clerks-office/boards-and-commissions/network-on-aging

Bold goals for environmental stewardship

The city has bold goals for protecting the environment and wants feedback as it considers ways to meet those goals.

As the city updates the road map for its Environmental

Stewardship Initiative, it has communitywide goals of reaching 100% renewable energy by 2045 and 30% less total energy use by 2050. For municipal operations, we're aiming for 100% renewable energy use by 2030 and 40% less energy use by 2040.

Residents, businesses and the City Council embraced these ambitious goals during outreach for the Environmental Stewardship Plan update last fall. The second phase of public engagement for the update – which focuses on potential actions for achieving those goals – includes:

- **Open House and Discussion**, Tuesday, Mar. 3, 5:30-8:30 p.m., Interlake High School: Residents can learn more about the Environmental Stewardship Plan, share their priorities and discuss ideas with fellow community members.
- **Environmental Stewardship Fair**, Saturday, Mar. 28, 10 a.m.-1 p.m., Mercer Slough Environmental Education Center: Residents can learn how to reduce their impact on the environment and support sustainability.

Each of these events is free and open to the public. To find out more information about these events and other opportunities to share your ideas, visit EngagingBellevue.com/environmental-stewardship.



Join a February Tree Tour!

Want to get outside and learn more about the trees that make up your 'City in a Park'? You're invited to attend an upcoming tree tour of one of Bellevue's parks! The city's urban forestry specialist will be hosting walking tours that focus on the urban forest, iconic native trees and the history of land uses in Bellevue.

The tours are lighthearted, educational and suitable for all ages. Each tour is about an hour long and covers about three-quarters of a mile.

Robinswood Park

Friday, Feb. 7, Noon–1:15 p.m.

Saturday, Feb. 8, 10–11:15 a.m.

Downtown Park

Friday, Feb. 21, Noon–1:15 p.m.

Saturday, Feb. 22, 10–11:15 a.m.

Please RSVP at BellevueWA.gov/trees



Attendees at the previous tree tours at Weowna, Robinswood and Downtown parks learned about the role of trees in Bellevue, shared their own tree stories, and made connections with their neighbors.

For more information, visit BellevueWA.gov/trees or email pmogilevsky@bellevuewa.gov.

FREE Sustainable Gardening classes through Cascade Gardener

As a member of Cascade Water Alliance, Bellevue residents have access to FREE sustainable gardening classes. This is a fantastic opportunity to learn from the pros how to



build beautiful, healthy landscapes and gardens that need less water and fewer chemicals.

25 free classes will be taught between February and April throughout the area (including eight classes hosted in Bellevue) by a team of expert gardeners and sustainable landscapers on a wide range of topics, including:

- Favorite northwest native plants
- Natural yard and lawn care
- Small-space food gardening
- Building healthy soil and composting
- And more!

Classes are FREE, but registration is required. For more information and to register, visit cascadewater.org/classes.php or call 425-453-0930.

South Bellevue Community Center survey

South Bellevue Community Center needs your input by Feb. 21 to help shape the future programming and activities at SBCC!

To fill out the survey, go online at

research.net/r/CommunitySurvey-SBCC

CommunitySurvey-SBCC or visit the center in person at 14509 Southeast Newport Way.

The survey is available in traditional Chinese, Korean and Spanish. To access these language options, click on the drop-down arrow in the upper righthand corner.

For alternate formats, interpreters or reasonable accommodation requests, please phone at least 48 hours in advance 425-452-6193 (voice) or email sbcc@bellevuewa.gov. If you are deaf or hard of hearing, dial 711.



2020 Census: The three “D”s are essential for the three “E”s

The decennial census counts everyone once, only once and in the right place.



**BELLEVUE
COUNTS**
2020 Census

You will be receiving a letter in mid-March inviting you to go online to fill out the 2020 Census. Knowing why the census is important for our community can be boiled down to the three “D”s for the three “E”s.

Democracy – The decennial census is required by the U.S. Constitution to ensure fair political representation in Congress. It determines how many seats each state gets in the U.S. House of Representatives. Getting a complete and accurate count of people living in Washington state will ensure that residents get their fair share of representation in Washington D.C. In 2010, Washington state gained a seat in the U.S. House of Representatives, going from nine to 10 seats.

Dollars – Because the census is the only 100 percent count of our country’s population, it is viewed as the most reliable data source for deciding how to distribute federal funding fairly across the country. Medicaid and Medicare are two of the largest federal spending programs allocated based on census data with over \$8 billion allocated to Washington state in 2016. Locally, Bellevue School District has received over \$112 million in federal funding over the past 10 years from Title I grants, Head Start, school breakfast and lunch programs, Title II for teacher quality, Special Education, and Title III grants for limited English programs to schools. Since 2010, the City of Bellevue has also received over \$76 million for transportation projects and \$5.8 million in Community Development Block Grants for human services.

Data – In addition to informing decisions about funding, census results inform numerous decisions that enable government, business, social service providers, and schools to be effective, efficient and equitable.

With a strong democracy, dollars to invest and data to tell us how, our community can make informed decisions enabling us to plan effective programs that operate efficiently and equitably.

Effective – Knowing who our customers are and who we are serving enables us to plan programs, goods and services that uniquely serve our population. With an accurate understanding of who lives in our community, we can tailor services to meet specific populations needs. Where should we focus on transportation for older adults, after school programs for children, and

job training for people who may be unemployed? What races and ethnicities are the people we’re serving, and how might different cultures view the programs, goods and services we provide? How might we tailor them to ensure our residents are not only being offered something they need but also something they want? One example is how data on race are used with age and language data to address language and cultural diversity needs in health care plans for the older population.

Efficient – Knowing how many people need a particular program, good or service helps us reduce waste and be fiscally prudent. How large of a water pipe should we install? How many and what size of buses are needed along a route? Should we plan to build a new elementary school? How many older adults are eligible for the City’s Utility Rate and Tax Relief program? With accurate population data, we have the information we need to make decisions about how to spend our limited resources wisely.

Equitable – Knowing how many people are of different races and ethnicities helps us ensure people of different races have the same opportunities for education, employment, voting, and home ownership. These data also help government enforce antidiscrimination laws, regulations, and policies. For example, race data are used to:

- Monitor compliance with the Voting Rights Act and enforce bilingual election requirements,
- Monitor and enforce equal employment opportunities under the Civil Rights Act of 1964,
- Identify segments of the population who may not be getting needed medical services under the Public Health Service Act, and to
- Allocate funds to school districts for bilingual services under the Bilingual Education Act.
- The National Science Foundation also uses these data to provide information on people of different racial backgrounds in the science and engineering workforce.
- Several federal agencies use these data to investigate whether housing or transportation improvements have unintended consequences for specific race groups.

To be **effective, efficient and equitable**, our community needs a strong **democracy**, fair allocation of federal and state **dollars** and accurate **data** on the people we serve. In other words, we need a complete and accurate 2020 census!

Boards and Commissions Meetings

All meetings are conducted at City Hall unless otherwise noted. Agendas are subject to change. If a holiday occurs on a Monday, please check the updated calendar. Agendas can be downloaded from the city's web pages listed below. Meeting alerts are available through subscribing to the City's Special Meeting Notices page. BellevueWA.gov/city-government/departments/city-clerks-office/special-meeting-notice

Bellevue Diversity Advisory Network

(6 p.m., Bellevue City Hall) Last Tuesday of each month BellevueWA.gov/city-government/departments/city-managers-office/diversity/bellevue-diversity-advisory-network

East Bellevue Community Council (6:30 p.m., Lake Hills Clubhouse, 15230 Lake Hills Blvd) First Tuesday of each month BellevueWA.gov/city-government/east-bellevue-community-council

Arts Commission (4:30 p.m., 1E-109) First Tuesday of each month BellevueWA.gov/city-government/departments/community-development/arts-and-culture/arts-commission

Environmental Services Commission

(6:30 p.m., 1E-113) First Thursday of each month Utilities.BellevueWA.gov/conservation-and-the-environment/environmental-services-commission

Planning Commission (6:30 p.m., 1E-113) Second and fourth Wednesday of each month BellevueWA.gov/city-government/departments/community-development/planning-commission

Transportation Commission (6:30 p.m., 1E-113) Second Thursday of each month with fourth Thursday as needed. BellevueWA.gov/planning/transportation-commission

Human Services Commission (6 p.m., 1E-113) First and third Tuesday of each month BellevueWA.gov/city-government/departments/city-clerks-office/boards-and-commissions/human-services-commission

LEOFF 1 Disability Board (6 p.m., Room 1E-118) First Tuesday of each month BellevueWA.gov/city-government/departments/human-resources/retirees-former-employees/leoff-1-disability-board

Library Board (5p.m., Lake Hills, Bellevue or Newport Way Library) Third Tuesday of each month BellevueWA.gov/city-government/departments/city-clerks-office/boards-and-commissions/library-board

Parks & Community Services Board (6 p.m., 1E-113) Second Tuesday of each month BellevueWA.gov/city-government/departments/city-clerks-office/boards-and-commissions/parks-and-community-services-board

The Bellevue Network on Aging (BNOA) 8:30 a.m., North Bellevue Community Center 4063 148th Ave NE, Bellevue) First Thursday of each month BellevueWA.gov/bnoa

Special Events Committee (8:30 a.m., 1E-112) Second Thursday of each month Parks.BellevueWA.gov/special-events/special-events-committee

Youth Link Board (6 p.m., 1E-120) Second Wednesday of each month BellevueWA.gov/city-government/departments/city-clerks-office/boards-and-commissions/youth-link-board

Bellevue's Neighborhood Services Division offers a variety of programs and partnerships for neighborhood leaders and active residents. To learn more about citizen involvement opportunities and programs to enhance neighborhoods, please visit our website at: BellevueWA.gov/city-government/departments/community-development/neighborhoods or call 425-452-6836 or email: neighborhoodoutreach@bellevuewa.gov. To subscribe to this newsletter, visit: BellevueWA.gov/neighborhood-news

City Council Bellevue.Legistar.com/Calendar.aspx

Day	Scheduled Meeting(s)	Location	Public Comment Opportunity
First and third Mondays except in August and December	6 p.m., Study Session	Council Conference Room	None
	8 p.m., Regular Session	Council Chambers	8 p.m., Oral Communications
Second and fourth Mondays except in August and December	6-10 p.m., Extended Study Session	Council Conference Room	6 p.m., Oral Communications
August – first Monday only	6 p.m., Study Session	Council Conference Room	None
	8 p.m., Regular Session	Council Chambers	8 p.m., Oral Communications
December – first and second Mondays only	6 p.m., Study Session	Council Conference Room	None
	8 p.m., Regular Session	Council Chambers	8 p.m., Oral Communications