



2019



Bellevue
Police Department

Report to the Community



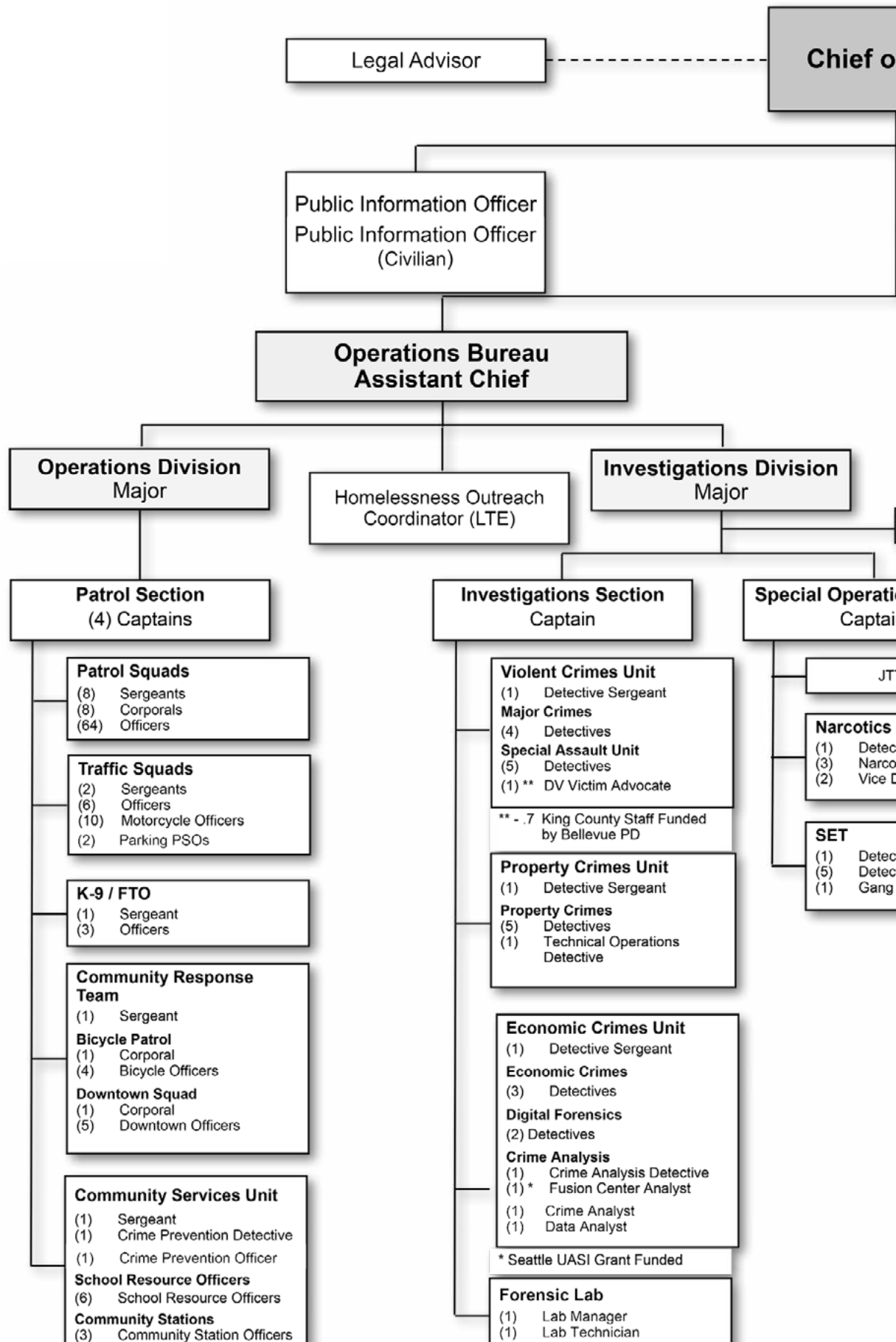
TABLE OF CONTENTS

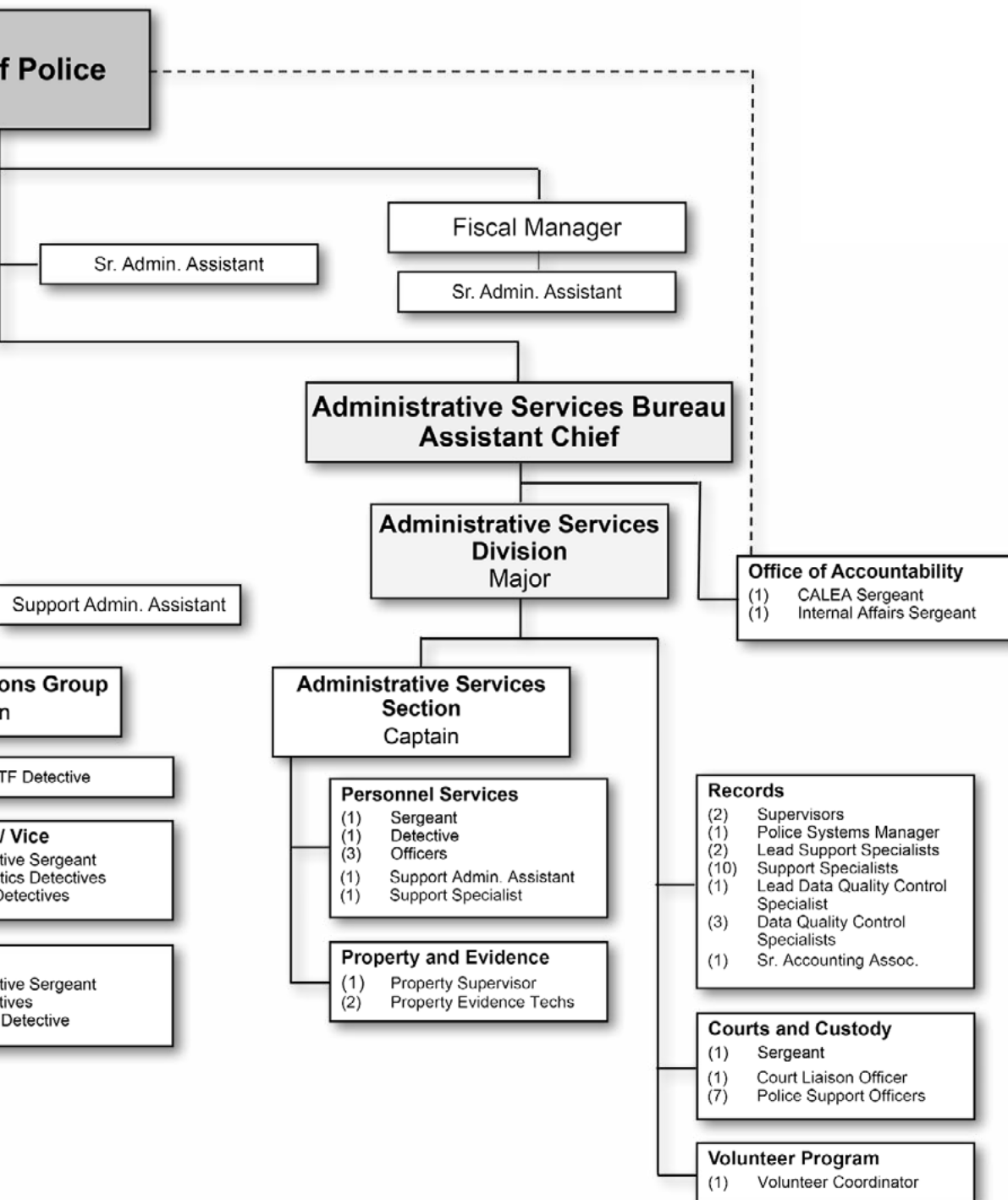
ORGANIZATIONAL CHART	4
EXECUTIVE LEADERSHIP TEAM	6
MESSAGE FROM CHIEF MYLETT	7
2018 FINANCIAL SUMMARY	8
BUDGET • EXPENDITURES AND REVENUES	9
OFFICE OF ACCOUNTABILITY	9
PUBLIC INFORMATION OFFICER	10
BELLEVUE AT A GLANCE	11
PERCEPTIONS OF PUBLIC SAFETY	12
CRIMES AND TRENDS	13
OPERATIONS	15
PATROL STATISTICS	17
OPERATIONS	19
BELLEVUE POLICE STATISTICS	25
TRAFFIC	27
INVESTIGATIONS	29
ADMINISTRATIVE SERVICES	35
HIRING AND TRAINING	39
AWARDS AND PROMOTIONS	41
VISION, MISSION AND GUIDING PRINCIPLES	42



For alternate formats, interpreters, or reasonable accommodation requests please phone at least 48 hours in advance 425-452-6917 (voice) or email bellevuepo@bellevuewa.gov. For complaints regarding accommodations, contact City of Bellevue ADA/Title VI Administrator at 425-452-6168 (voice) or email ADATitleVI@bellevuewa.gov. If you are deaf or hard of hearing dial 711. All meetings are wheelchair accessible.

2019 ORGANIZATIONAL CHART





Police Personnel			
		Commissioned	Non-Commissioned
Chief	1		
Assistant Chief	2		
Majors	3		
Captains	7		
Sergeants	22		
Corporals	10		
Detectives	35		
Officers	105		
	Administration	6	4
	Operations	130	4
	Investigations	41	5
	Administrative Services	8	34
	Total	185	47
Total Police Department Personnel		232	

EXECUTIVE LEADERSHIP TEAM



Patrick Arpin
Assistant Chief of Police



Carl Kleinknecht
Assistant Chief of Police



Jon Hoffman
Administrative Services
Major



John McCracken
Investigative Services Major



Andrew Popochock
Patrol Services Major



MESSAGE FROM THE CHIEF OF POLICE



Stephen L. Mylett
Police Chief

It is my pleasure to present the Bellevue Police Department's annual report to you for the calendar year 2019. We strive for excellence as we deliver superior law enforcement services with *respect, integrity, accountability, and service*. I want to highlight several of the accomplishments we achieved last year.

For the first time in eight years, the department achieved zero sworn vacancies. In a challenging law enforcement hiring environment, we hired 21 officers in 2019, 16 of whom transferred from other agencies. Lateral officers are experienced police officers who can be fully deployable in Patrol 9-12 months sooner than an entry-level officer. It is also reassuring to note that there are always eligible applicants ready to move forward in our hiring process as vacant positions come open. Throughout the hiring process, I was gratified that our intentional recruiting efforts resulted in a force that better reflects the city's demographics; more than half of the 21 hires were minority or female.

Being at full staffing allowed us to re-establish the Downtown Unit with six officers whose primary mission is to decrease crime and the perception of crime and improve the quality of life in the downtown core. The officers focus on organized retail theft, shoplifting, car prowls, and other crimes in the downtown area. These

officers will also help plan for future changes coming to Bellevue, such as light rail and significant growth. Additionally, each Downtown Unit member is part of our Special Weapons and Tactics team and can capably respond to any emergent incident.

In addition to filling commissioned vacancies, the department civilianized three positions, thereby enabling three officers to return to our Patrol Division to provide more direct service to you, our customer. Civilians now staff the Public Information Officer, Crime Prevention Officer, and the Court Liaison Administrator.

In 2019, Bellevue experienced its first homicide in more than three years. It was a complicated case that involved multiple suspects who fled the murder scene at Goldsmith Park before the arrival of Patrol officers. After a thorough six-month investigation, our detectives, SWAT, and Special Operations Group arrested four suspected gang members that all actively participated in the murder. We also significantly increased the visibility of uniformed patrols in the Crossroads area following the murder to reassure the community and reduce crime.

2019 was a very successful and, at times, challenging year. I want to thank the Bellevue City Council, City Manager Brad Miyake, the entire city leadership team, and most importantly, you the Bellevue community for the unwavering support you always provide **your** police department. I also want to thank the men and women of the Bellevue Police Department for your courage, commitment to serve, and dedication to deliver superior services to the public.

Stephen L. Mylett

2019 FINANCIAL SUMMARY



Bevely Ni
Police Fiscal Manager

2019 was a monumental year for the Bellevue Police Department. We reached zero sworn vacancies in September 2019 and maintained it at zero through year-end. A total of 22 new officers were hired, both entry-level and lateral from across the United States. Tremendous efforts were devoted to achieving full staffing

and bringing the best-qualified professionals to join the Bellevue Police Department. Remarkably, the Department accomplished this goal in a fiscally responsible manner.

The Bellevue Police Department met its 2019 Budget with success.

Operating on an adopted budget of \$48.9 million, the Department's total expenditure for 2019 was \$48.6 million, generating a savings of over \$320,000. The Police Department returns 100% of the budget savings to the City's General Fund.

There are 185 commissioned positions and 46 civilian positions in the Department, for a total of 231 budgeted positions in 2019.

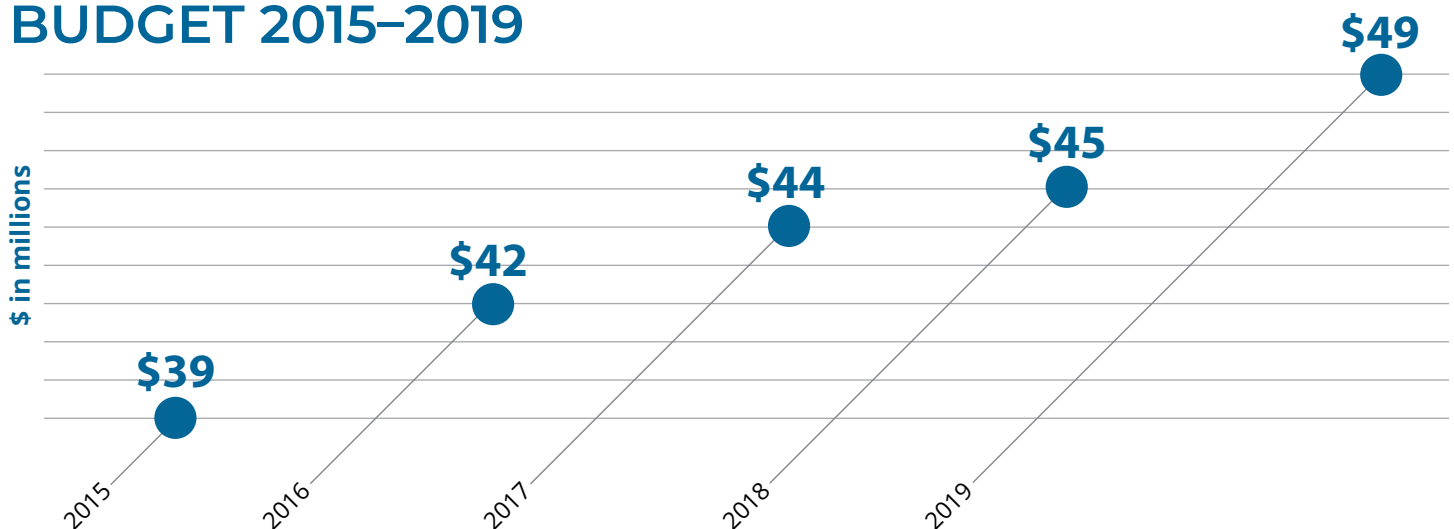
Personnel costs, including salary and benefits, make up 70% of the adopted budget. Direct

overhead costs represent approximately 16%, and another 9% is attributed to intergovernmental charges. Finally, the remaining 5% of the budget funds police operating costs, such as essential training and equipment purchases.

On the revenue side, the Bellevue Police Department generated \$1.05 million for the City of Bellevue in 2019, which directly supports General Fund operations on the City level. The Police Department also received reimbursements for security and flagging services provided at special events. Summer Movies in the Park, Snowflake Lane parades, and Garden d'Lights are among some of the favorite events the Bellevue community enjoys.

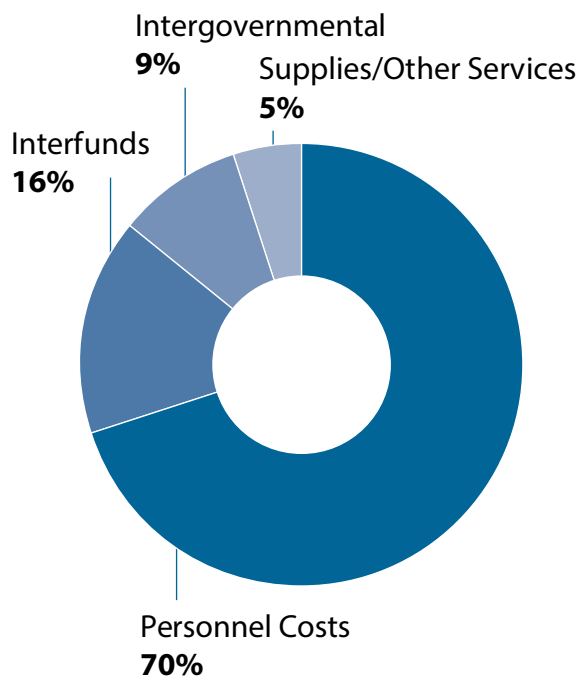
Founded in 2009, the Bellevue Police Foundation has been an integral partner to the Bellevue Police Department. BPF celebrated its 10th Anniversary in 2019. It contributed over \$110,000 to the Bellevue Police Department last year toward equipment purchases, including night vision monocular, throw phone, forensic camera, and VirTra simulator. For the first time in history, BPF participated in the Shop with a Cop program that has been a long-standing holiday tradition with the Bellevue Police Department and the Bellevue community. With the Foundation's generous contributions, the Bellevue Police Department was able to provide gifts to triple the number of children-in-need during the holiday season.

BUDGET 2015–2019

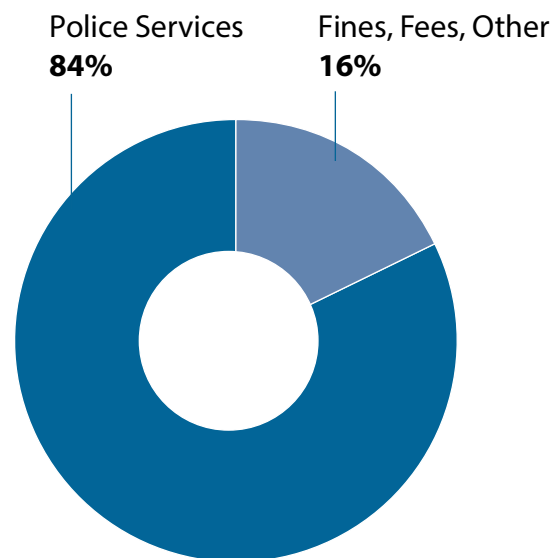


BUDGET • EXPENDITURES AND REVENUES

Expenditures: \$48.6 million



Revenue: \$1.05 million



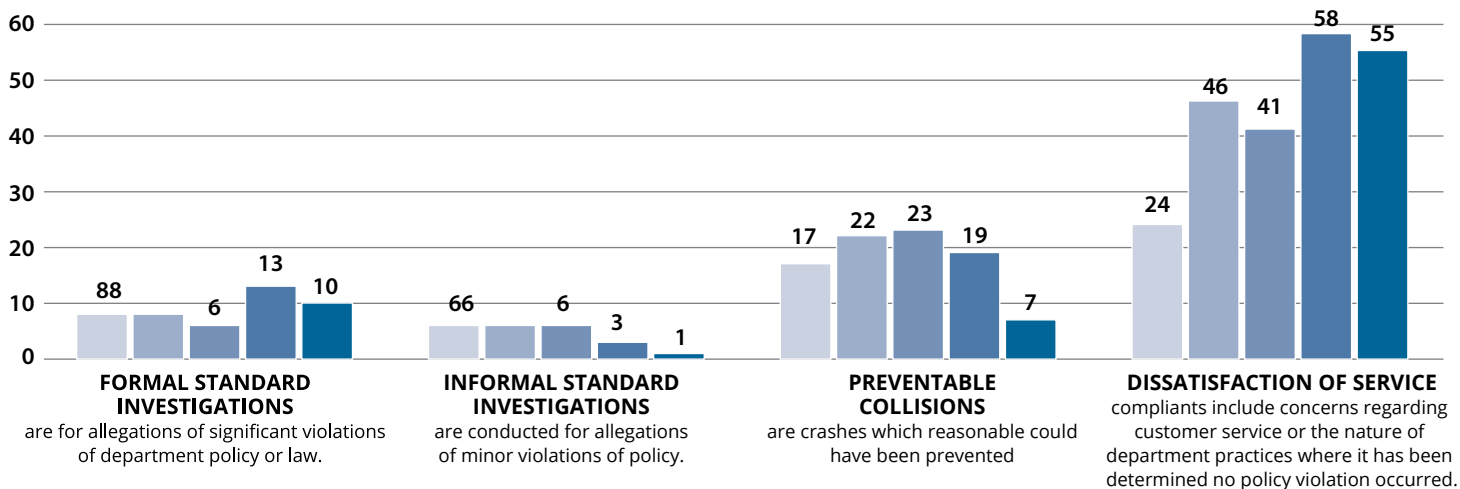
NOTE: Revenue generated by police goes to the City of Bellevue General Fund

OFFICE OF ACCOUNTABILITY

The Office of Accountability (OA) has several areas of responsibility, including internal affairs investigations, accreditation management, and policy management. Two Sergeants staff the office, and they report directly to the Chief. The department's legal advisor works closely with office staff. The Office of Accountability investigates internal and external complaints of alleged employee misconduct, violations of rules and regulations, and violations of law.

The Bellevue Police Department has attained the highest level of law enforcement accreditation from the Commission on Accreditation for Law Enforcement Agencies (CALEA), the "gold standard with excellence" level of accreditation. In 2017, the department began a new four-year assessment cycle, which concludes at the end of 2020 with an onsite visit by CALEA assessors.

Department Complaints by Type 2015 to 2019



PUBLIC INFORMATION OFFICER



Meeghan Black
Public Information Officer

The Public Information Officer (PIO) position was one of three positions civilianized in 2019. This change allows three officers to return to full-time traditional police work. The PIO's function is to represent the Chief of Police and the Bellevue Police Department to the community and

media. The PIO coordinates timely responses to media inquiries, provides information

about police incidents and cases, and works to educate the public about safety and crime prevention issues.

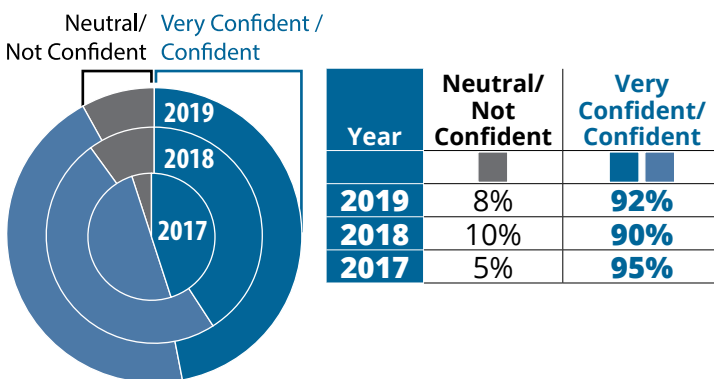
Additionally, the PIO maintains the Department's internet and intranet pages, social media accounts, and various other information sources. The Police Department routinely works with local media and organizations such as CrimeStoppers of Puget Sound to identify and locate wanted individuals and assist in recovering stolen property. Social media outlets such as Twitter, Facebook, Nextdoor, and the Department's blog, www.bellevuebeatblog.com, have allowed the Department to provide real-time information to residents and members of the media.

CONFIDENCE AND PROFESSIONALISM IN POLICE DEPARTMENT

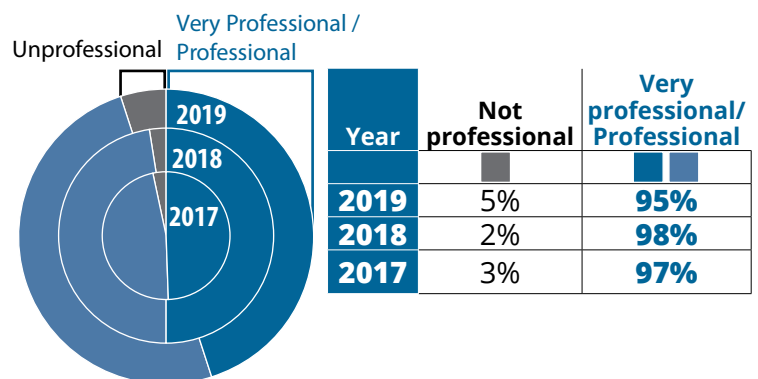
In 2017, the question, "How confident are you in the ability of the Bellevue Police Department to handle emergencies in an effective manner?" was introduced. While confidence in police decreased slightly when compared to 2017, nine-in-ten residents state they are "Confident" or "Very Confident" that the Police Department can handle emergencies in an effective manner.

Residents also rated the professionalism of Bellevue's police officers and employees. Just as in 2017, residents provide very high ratings of professionalism.

Confidence in Police



Professionalism of Police



BELLEVUE AT A GLANCE

1953

Year the City of Bellevue was incorporated

5,950

Bellevue's population at time of incorporation

145,300

Bellevue's 2019 population

7.5 million

Population of Washington State in 2019

33.5 square miles

City of Bellevue's footprint

2700 acres

Parks in Bellevue

92 miles

Multi-use trails

150,148

Employees in Bellevue (2018)

53,000

Employees in downtown Bellevue

44

Languages spoken in Bellevue

28

Schools

410

Downtown in acres (1.87% of city's total land area)

21 acres

Downtown Park

87,200

Downtown's average "daytime population"

1,700

Daily visitors to the Bellevue Regional Library

1,150

Buses coming into Bellevue Transit Center each weekday



Connect with the Bellevue
Police Department

WEBSITE: Police.BellevueWA.gov

BLOG: bellevuebeatblog.com

RECRUITING: protectbellevue.com

ONLINE REPORTING: reporttobpd.com



PERCEPTIONS OF PUBLIC SAFETY

Each year, Bellevue residents are randomly surveyed as part of the city's annual performance measures survey. The police department and perceptions of safety ratings are included here.

Percent of people surveyed who feel safe walking alone in **downtown business area during the day**

2015 99%
2016 98%
2017 99%
2018 97%



2019
99%

Percent of people surveyed who feel safe walking alone in **neighborhoods during the day**

2015 97%
2016 96%
2017 97%
2018 96%



2019
96%

Percent of people surveyed who feel safe walking alone in **downtown business area after dark**

2015 86%
2016 86%
2017 88%
2018 86%



2019
86%

Percent of people surveyed who feel safe walking alone in **neighborhoods after dark**

2015 86%
2016 84%
2017 87%
2018 91%



2019
87%

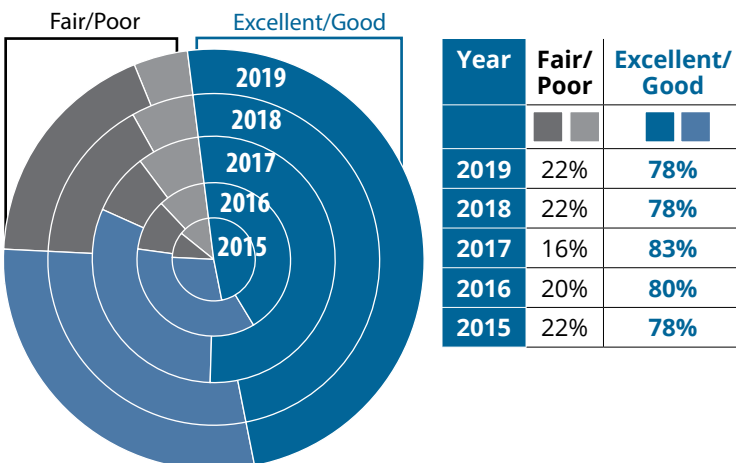
POLICE CONTACT

Ten percent (10%) of Bellevue residents say that they or someone in their household was the victim of a crime in the last 12 months—the same as previous years. Of those, sixty-two percent (62%) reported the crime to police.

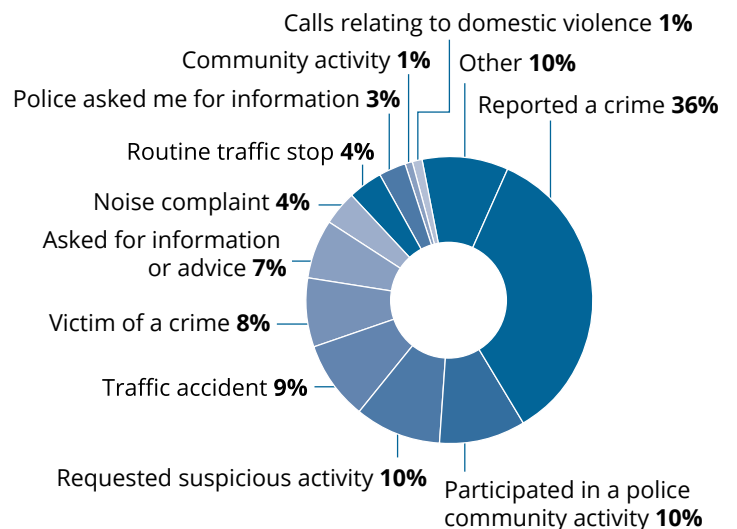
One in five Bellevue residents had contact with the police in the last 12 months. The most frequent reasons were to report a crime, witnessing a crime and reporting a suspicious activity.

Eight out of ten residents who had contact with the police reported a positive experience—half said the contact was "Excellent."

Ratings of Police Contact



Nature of Police Contact



CRIMES AND TRENDS

Bellevue has fully transitioned to National Incident-Based Reporting System (NIBRS) to collect and report crime data to the FBI. NIBRS replaced the Summary Uniform Crime Reporting (UCR) method. RIBRS categorizes crimes as: crimes against persons, crimes against property and crimes against society. While Summary UCR counted only eight offense types, NIBRS collects information on fifty-three different offenses. Bellevue's NIBRS data is submitted electronically monthly directly to the WASPC repository.

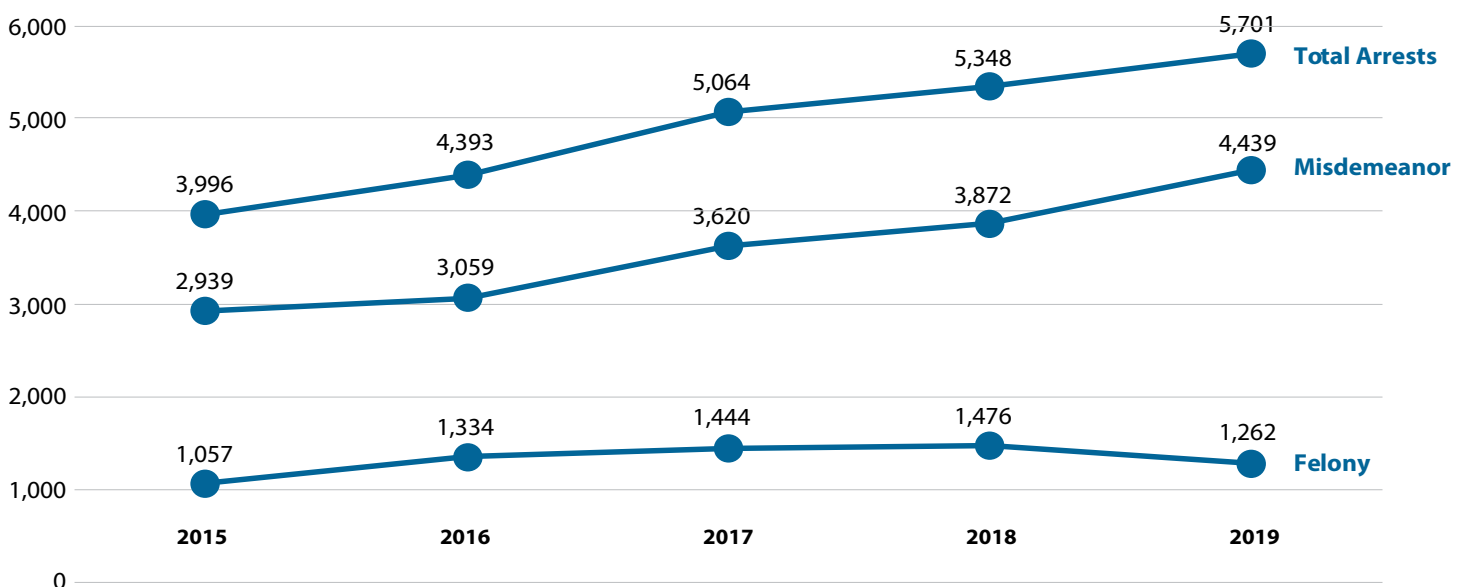
2018–2019 CRIME COMPARISON

Crimes against property		Crimes against persons		Crimes against society	
2018	2019	2018	2019	2018	2019
5,598	5,550 ↓	931	901 ↓	369	506 ↑

CRIMES OF INTEREST

YEAR	HOMICIDE	AGGRAVATED ASSAULT	RAPE	BURGLARY	ROBBERY	AUTO THEFT	VEHICLE PROWL
2015	2	78	26	737	63	228	1,436
2016	0	71	16	635	61	312	1,594
2017	0	71	28	573	58	328	1,377
2018	0	82	29	527	89	385	1,114
2019	1	84	28	403	77	358	1,103
5-Year Average	1	77	25	575	70	322	1,325

BELLEVUE ARRESTS BY YEAR





Bellevue Police Officers

OPERATIONS

PATROL



Andrew Popochock
Operations Major

The Patrol Operations Division is the largest section of the Bellevue Police Department. It consists of 131 commissioned Police officers, two limited commissioned Parking Enforcement officers, and a civilian crime prevention employee. The Patrol Operations Division comprises all uniformed police personnel, including

eight patrol squads, traffic enforcement, collision investigators, downtown police officers, school resource officers, bike patrols, community station officers, and the K-9 unit. The Patrol Division also includes several specialty units, including the SWAT Team, Crisis Response Team, Bomb Squad, Honor Guard, Field Training Officer Program, and the Civil Disturbance Unit. Our Patrol officers are responsible for immediate response to all 911 emergency calls, routine calls for service, and proactive policing.

The Patrol Division continues to make community relations and trust building a priority through the Sector Captain program and diversity outreach initiatives. The Sector Captain program divides the city into three sectors, with a patrol Captain responsible for each sector. The three Sector Captains have enhanced the department's community outreach by interacting with a diverse range of stakeholders throughout the community.

The Sector Captains also help coordinate department resources to identify and target crime trends and other quality of life issues within their areas of responsibility.

The Patrol Operations Division participates in several community safety forums organized in partnership with various community groups. These forums focus on personal safety, diversity outreach, and specific concerns about policing in minority or immigrant communities. The Patrol Division continues to work toward educating all officers and leaders in cultural competency and implicit bias.

The issue of homelessness continues to be a concern throughout the city and the region. Members of the Patrol Division joined in discussions with community stakeholders and other city departments about concerns related to this issue. The department focuses on enforcement and compassion when dealing with this issue. Officers work hard to provide resources to those experiencing homelessness while still enforcing the law.

Our bike team and neighborhood station officers have taken on much of the work in this area. These officers coordinate with other city departments, governmental organizations, and outreach agencies to ensure a unified response to the growing homelessness issue in Bellevue.

As the Bellevue Police Department's frontline division, the Patrol Division continues to accomplish its mission of reducing crime, reducing the fear of crime, and enhancing public trust. Patrol officers partner with other divisions within the Bellevue Police Department to identify and address crime trends as they develop in the city. Patrol officers also partner with businesses and organizations within the city to ensure that they are working in partnership with us to address crime trends they are seeing.

The patrol division would like to thank the residents of Bellevue for the support, and we will continue to work with our residents to keep Bellevue a great place to live, work, and play.

CITIZEN ADVISORY COUNCILS

The Bellevue Police citizen advisory councils were formed as an essential part of the Bellevue Tomorrows Program, a program designed to examine the past's successes and the current policies, practices, and procedures of the Bellevue Police Department, to make lasting improvements for the future. The six citizen advisory councils incorporate a broad cross-section of the Bellevue community.

The first Citizen Advisory Council formed in early 2016 with the African American Advisory Council. Since then, five additional councils have been formed: Muslim, Latino, LGBTQI, Interfaith, and Asian and Pacific Islander.

The advisory councils regularly meet to discuss how to improve the delivery of services that the Bellevue Police Department provides to the community. The councils collaborate with the department on projects and guide the Chief of Police on best practices and approaches.

They also help identify barriers between police officers and community members and develop strategies to eliminate the barriers.

The goal of the Tomorrows Program is to strengthen the relationship between police and the community through trust, respect, and mutual understanding. We do this by establishing an environment that promotes dialogue, education, and a genuine, sustainable partnership.

In 2019, BPD celebrated with the Islamic Center of the Eastside as they broke ground on a new mosque. This came after Bellevue and particularly the Muslim community, experienced a destructive arson fire to the Islamic Center of the Eastside house of worship in March of 2018. It was the second arson fire in less than 18 months and destroyed the structure. The new mosque is slated for completion in spring 2021.

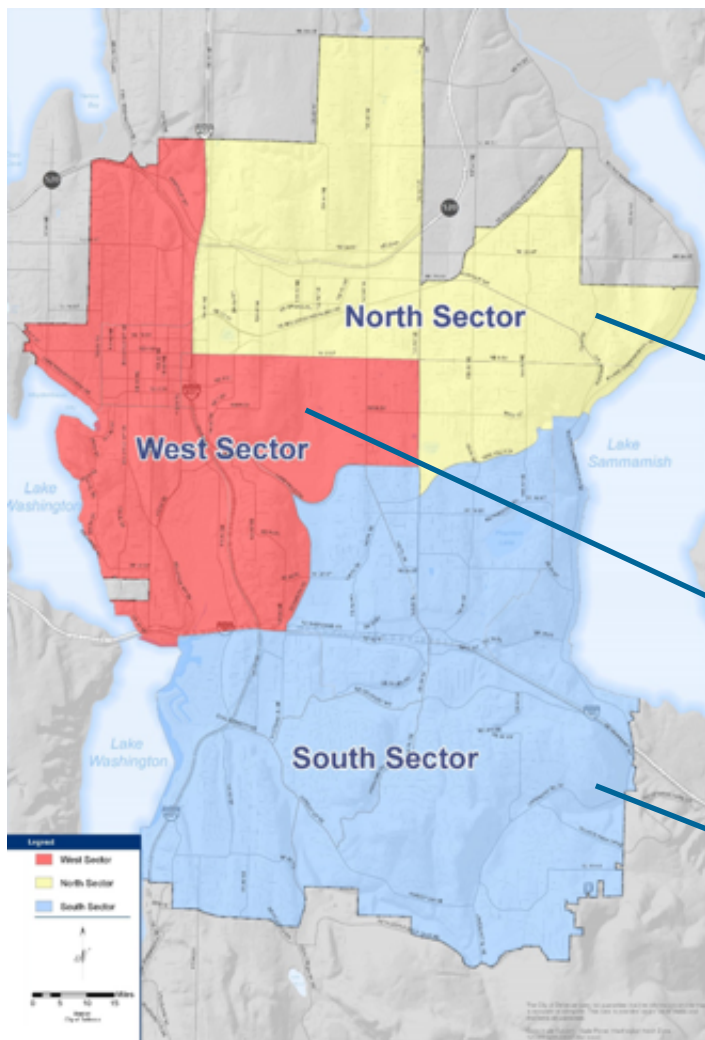


Bellevue Police at the Pride Parade in Seattle



Asst. Chief Carl Kleinknecht at the Mosque groundbreaking

SECTOR CAPTAIN PROGRAM



The Sector Captain program was formed in 2015 by Chief Mylett, who saw a need for a direct point of contact for Bellevue Residents or businesses with questions or concerns related to crime or police activity. The Sector Captains are each responsible for a defined area of the city, and work collaboratively with the residents and businesses in their area of responsibility to address problems and concerns.



North Sector

Captain Joe Nault

NorthSectorCaptain@bellevuewa.gov



West Sector

Captain Marcia Harnden

WestSectorCaptain@bellevuewa.gov



South Sector

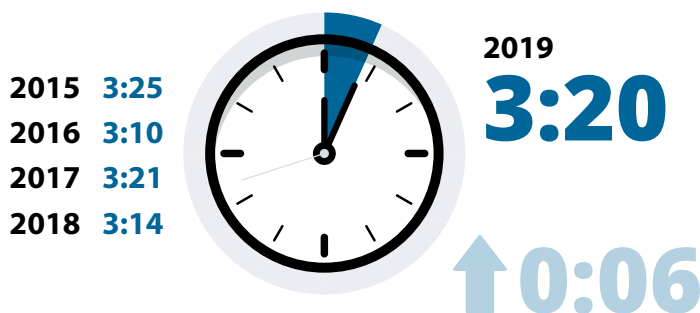
Captain Mark Tarantino

SouthSectorCaptain@bellevuewa.gov

PATROL STATISTICS

Priority One calls are life-threatening emergencies.

Time officer is dispatched to arrival on scene



Increase in response time compared to 2018

Total Calls for Service

2015 64,351
2016 65,630
2017 65,646
2018 65,944



2019
65,664

280 ↓

Decrease in number of calls from 2018



Snow patrol

OPERATIONS

Special Details

The Downtown Unit (DTU) was re-established and staffed in late winter 2019. It is a hybrid of a patrol squad and community outreach unit, featuring one corporal and five officers and is overseen by a sergeant.

The Downtown Unit's primary focus is proactive policing to cut crime primarily in the downtown corridor, including the bus and rail systems. Additionally, DTU officers assist patrol in responding to 911 calls and other calls for service in the downtown district. The unit provides tactical response to high priority calls, high-risk warrant services, Extreme Risk Protection Order Services, Special Operations Group and Detective arrest assists, uniformed emphasis patrols, and other critical incidents such as active shooter events. The Downtown Unit will also have ancillary duties identifying critical infrastructure and creating response plans for that infrastructure.

The DTU provides patrol officers ongoing active shooter, CUF, and breaching training.

They also staff Rescue Task Force details for special events like Snowflake Lane and Fourth of July.

The Bicycle Unit and Downtown Unit split into two separate units in 2019. The Bicycle Unit's mission continues to focus on the quality of life issues, ensuring that Bellevue is a safe place to live, work, and visit. The Bicycle Unit directs their high visibility efforts towards parks, malls, shopping centers, nature trails, park & ride lots, and high pedestrian traffic areas of Bellevue.

While the Bicycle Unit is no longer the primary point of contact for issues involving homelessness, the team still plays a pivotal role in this area.

Additionally, the Bicycle Unit has found its place as a "utility" team for the department. The unit routinely assists our Investigations and Patrol Divisions. Plus, during the summer and winter months, the Bicycle Unit attends many

community events such as the Family Fourth, Snow Flake Lane, and many neighborhood blocks parties. As the City of Bellevue's population continues to grow, the Bicycle Unit is committed to maintaining safety and building public trust in our community.

The Community Services Unit consists of one Sergeant, three Community Station Officers, and six School Resource Officers.

Community Police Stations are in the Factoria and Crossroads neighborhoods. The stations are staffed by a full-time uniformed Officer and civilian volunteers. They focus on proactive law enforcement, provide safety-related community presentations, and facilitate community meetings. Community Station Officers and the Crime Prevention Detective work closely with community stakeholders to develop relationships that promote cooperation and solve challenges.

Located inside the Factoria Square Mall, the Factoria Community Station is staffed by Officer Lucas Porter and eleven volunteers. Officer Porter started in this position in September and devoted much of his time addressing unlawful encampments and people living out of their vehicles. He worked with social services like Congregations for the Homeless and the city's new Homeless Coordinator to adopt a plan to help those in need. This year, the unit organized the annual Child Safety Fair at the Factoria Mall, and Officer Porter partnered with Target and Walmart to sponsor over forty Bellevue kids for the annual "Shop with a Cop" event in December.

Officer Craig Hanaumi, our Crossroads Community Station Officer, continues to reach out to the community by assisting families and individuals in need. The Crossroads community station is also staffed by nine volunteers who perform many day-to-day functions at the substation. In 2019, Officer Hanaumi coordinated with the Salvation Army to schedule BPD officers to serve meals to those in need once a month at the Bellevue location. This



Officer Craig Hanaumi and others regularly engage community members for a little fun

program has improved the Bellevue Police Department's reputation, increasing trust between Officers and the community that they serve. Officer Hanaumi also continued teaching self-defense tactics to women and children. The program helps build self-esteem and confidence. Officer Hanaumi also works closely with the Boys and Girls Club, mentoring youth throughout the City of Bellevue and organizing a monthly "teen feed" with the help of fellow officers.

School Resource Officers (SROs) support the Bellevue School District by dedicating six School Resource Officers to the schools, one assigned to each of the four high schools and two assigned to the four middle schools. BPD recognizes that schools are more than places where kids go to learn; they're de facto community centers. The Officers' presence at the schools helps to create a safe learning

environment for students and educators. The SROs also work with families and other community resources to intervene against at-risk or criminal behavior among youth. In 2019, the SROs handled over 6,500 school-related inquiries, a substantial increase from last year. These incidents included calls for service that Patrol Officers would otherwise have to manage, assisting fellow Officers and Detectives with investigations involving students, and complaints involving gangs, drugs, weapons, and threats of violence. In addition to these types of investigations, the Officers' work also includes crime prevention and community outreach activities such as classroom presentations, welfare checks for truant students, and dispute mediations. In its 23rd year, the SRO program is an example of the department's long-standing commitment to the community by building trust through service.

The Crime Prevention Coordinator

administers crime prevention related programs, the Bellevue false alarm reduction program, and monitors retail marijuana outlets in the city. In 2019, this position was civilianized, and Ruby Daly was hired. Daly is a former police officer and has extensive experience in crime prevention and community outreach. She responds to requests for community meetings, presentations and block watch coordination. She identifies emerging crime and safety concerns in the community and develops strategies for interceding. In addition, the crime prevention coordinator organizes outreach events, such as “Coffee With A Cop”, Child Safety Fair, National Night Out Against Crime, Paws on Patrol, and other community collaboration projects.

The Crisis Response Team (CRT) includes eight specially trained negotiators who work with patrol officers and the SWAT team to peacefully resolve incidents involving barricaded suspects, suicidal persons, and

hostage situations. Team members are trained in negotiating with individuals in situations in which mental illness or substance abuse are involved. The partnership between CRT and SWAT is vital, as officers must anticipate all potential outcomes for people who are facing an unprecedented crisis in their life. The team’s goals are to provide exceptional service to the community by responding to these dynamic incidents, de-escalating those situations through communication, building rapport and trust, and leading to peaceful resolutions. In 2017, the Bellevue Police Foundation generously funded a van for use in CRT operations. The specially outfitted van meets the team’s needs and is in service, assisting the residents of Bellevue.

The K-9 Unit is responsible for visible patrol, response to in-progress calls, tracking of fleeing suspects, searches, evidence location, and narcotics detection. In 2019, the K-9 Unit was deployed 93 times and located 29 suspects.



Police negotiator participates in a training exercise



Officer Brad Knudtsen and K9 Tyr

The K9 Unit consists of a Sergeant, three K-9 Officers specially trained and certified dog handlers, and three Police Dogs. In 2019, the K-9 Unit provided training sessions for several elementary school groups, two City of Bellevue Police Citizen's Academy classes, and several K-9 Experiences donated for several charitable auctions.

The Honor Guard is comprised of ten commissioned officers. They receive specialized training and dress uniforms to serve as ambassadors of the Bellevue Police Department for funerals, ceremonies, and other events. In 2019, the Honor Guard participated in 18 events ranging from the city of Bellevue ceremonies, regional officer funerals, and other momentous occasions. Two team members traveled to Biloxi, MS, to represent Bellevue PD at the funeral for Officer McKeithen, who had previously trained a recent lateral to BPD. In all, the team completed more than 762 event hours and 220 hours of training.

The Special Weapons and Tactics (SWAT) Team completed over 35 total missions in 2019 with 61 deployments. These operations included high-risk search warrants for the Investigations Section and Special Operations Group. To maintain their high level of proficiency, each SWAT member participated in nearly 300 hours of specialized training in 2019, including waterborne and land-based navigation. Sniper personnel and explosive breaching experts participated in additional specialized training.

Team highlights for 2019 include:

- SWAT provided immediate action teams for the 4th of July event in Downtown Park and the annual Snowflake Lane event downtown.
- Static displays for several community events, including National Night Out Against Crime, the annual Bellevue Police Foundation breakfast, and the annual Children's Safety Fair, and hosted instructional classes for those attending our community academies.
- SWAT operators provided instruction in and acted as role players for active shooter training for the entire department.
- SWAT added three new operators to the team and a Tactical Information Officer (TIO), to coordinate communication between the Crisis Response Team and the SWAT Command.

Field Training Officers (FTOs) are a dedicated group of officers responsible for the training of all new Bellevue Police Officers. In 2019, there were 12 certified Field Training Officers in the department. These officers are all department veterans who have completed a 40-hour Field Training Officer Academy. After completion of the basic police academy, new student officers follow a 15-week high intensity training program with an FTO acting as a mentor and trainer. 21 student officers completed some part of their field training process during 2018. Additionally, 11 officers successfully completed their one-year probationary period in 2019.

The Bomb Squad consists of a Commander and four certified Bomb Technicians. The squad is a regional team that responds to calls in Bellevue, Kirkland, Redmond, Issaquah, and Mercer Island. In 2019, the Bomb Squad responded to seven suspicious or unattended package calls in the region, and 20 recoveries of explosive materials and ammunition disposals. Technicians conducted eight security details, including coordinating with the U.S. Secret Service for visits made by dignitaries. The team presented to four area schools and community academies and provided local businesses training on bomb threat response. The Bomb Squad conducted protective sweeps for explosive threats for Snowflake Lane with assistance from the Washington State Patrol's explosive detection K-9 units.

All Bomb Squad members received approximately 300 hours of annual training required by the FBI to maintain certification. They attended specialized training classes to keep their skills, proficiency, and knowledge of current trends in explosive threats. Two Bomb Squad members are cross-trained as SWAT team members and are currently assigned to the SWAT Team.

Crime Scene Investigators (CSI) are patrol officers who receive additional training from the Criminal Justice Training Commission in fingerprinting, photography, and evidence collection. Additionally, CSI Officers receive an extra 40 hours of instruction in advanced crime scene processing. This training includes fingerprinting, photography, trace evidence collection, tool mark impressions, the collection of DNA evidence, and crime scene diagramming. In the coming year, the CSI program will conduct an in-depth concentrated training session taught in-house for those interested in becoming Crime Scene Investigators. The Patrol Division currently has eight CSI trained patrol officers. CSI Officers and BPD Forensics Technicians also serve as instructors for the Crime Scene Investigation portion of the Department's Community Academy.

The Civil Disturbance Unit (CDU) The Civil Disturbance Unit (CDU) consists of a Captain acting as the team commander, a second Captain filling the role of a back-up commander, four Sergeants, and 19 Officers. The CDU team receives specialized training in protecting the rights of demonstrators and community members gathered in large groups and in making mass arrests. The CDU team is divided into a line unit, a bicycle unit, a less-lethal munitions team, and a cut team. Line Unit officers deploy as a visible presence to deter criminal activity during a large-scale event and as a reactionary force in case of a disturbance. The less-lethal munitions team comprises officers who are specially equipped and trained to utilize impact munitions designed to protect Officers faced with violent crowds. Large scale demonstrations or rallies can overwhelm a single police department, so the Bellevue CDU team deploys in cooperation with officers from many other outside jurisdictions, including the Seattle Police Department, the Valley Civil Disturbance Unit, and the Washington State Patrol CDU team.



Officer watching over a peaceful protest

The Community Academy is a twelve-week instructional curriculum designed to familiarize Bellevue residents and those who work in Bellevue with how the Bellevue Police Department operates. The program allows officers to address myths and misconceptions about law enforcement and is an opportunity to interact with people on a more personal level in a positive environment. In 2019, the Community Services Unit hosted two community academy sessions. The three-month curriculum is interactive and allows attendees to hear from subject matter experts from each unit of the Bellevue Police Department. Attendees participate in a ride-along with a patrol officer, experience scenarios at the virtual range, observe how K-9 officers and their dogs track suspects and hear from detectives about their jobs and recent high-profile cases. Many Community Police Academy graduates become ambassadors for the Bellevue Police



Honor Guard Officer Paul Dill at National Police Week in Washington, DC

Department at community events, leaders of crime prevention efforts in their neighborhoods, and some become a part of our award-winning police volunteer program.

Emergency Vehicle Operations Course (EVOC)

Our Emergency Vehicle Operations instructors are a group of nine officers and sergeants who have received specialized training from the Washington State Patrol on the safe and effective operation of police vehicles. Among the duties of the EVOC cadre is the biannual in-service training. This training is mandatory for all uniformed commissioned personnel and optional for the remainder of the department. In 2019, the EVOC Instructors were able to provide training at Pacific Raceways, which was an excellent opportunity for our officers to practice higher speed maneuvers. EVOC instructors also provided quarterly remedial training to officers found to have been involved in preventable collisions.

Additionally, the instructors conducted commentary drives for all police department volunteers that operate department vehicles. All volunteers passed their annual driving tests. Finally, a significant amount of time in 2019 was devoted to reviewing policies and researching the possibility of adding Pursuit Intervention Techniques to our options in pursuit driving.



Sgt. Mike Shovilin motors training

2019 BELLEVUE POLICE DEPARTMENT STATISTICS



Hours Donated

6,113

Time donated by Bellevue Police volunteers

K-9 Unit

29



Number of suspects located and apprehended by Bellevue's three K-9 dogs.

Parking infractions

2,901



Number of accessible parking infractions issued by parking enforcement personnel



Number of Volunteer Paws on Patrol

215

45,000 hours donated by these 4-legged crime fighters



Arrests

5,701

Number of arrests made in 2019



Evidence Examined

1,072

Pieces of evidence examined by the forensics laboratory





Motorcycle Enforcement Officer

TRAFFIC

The Bellevue Police Department Traffic Unit consists of Collision Investigators, Motorcycle Officers, and two Parking Enforcement Officers. The unit's mission is to reduce vehicular collisions and injuries and facilitate the safe and expeditious flow of vehicular and pedestrian traffic by encouraging voluntary compliance with traffic regulations. A combination of education, engineering, and enforcement helps us achieve this goal.

The Traffic Unit also includes a group of police volunteers who enforce fire zone and disabled parking violations. As with every unit within the Police Department, the BPD's Traffic Unit continued to experience staffing challenges in 2019. The unit operated with a shortage of 40-60% authorized staff for the Motorcycle Unit and 17-33% of authorized personnel for the Collision Unit. Despite those challenges, the Traffic Unit continued to provide exceptional public service to the residents of Bellevue.

Members of the Traffic Unit responded to 917 traffic collisions in 2019, which was 62% of the 1,467 total reported crashes during the year. Of those, 401 collisions involved injuries that were investigated by members of the unit. Our Collision Investigators also investigated five fatality traffic collisions and numerous other serious injury and high-profile crash cases.

The Traffic Unit issued 7,849, or 81% of the 9,648-total officer-issued citations in the city.

The Motorcycle Unit was involved in providing traffic control and security at several major events throughout the year. These events included the Bellevue Family 4th event, the Bellevue Festival of the Arts, Snowflake Lane parades, and numerous other events requiring traffic control.

In 2019 the Traffic Unit continued its partnership with the Washington Traffic Safety Commission (WTSC) and participated in several regional grant-funded emphasis patrols. These included Target Zero (a statewide initiative to reduce fatalities from traffic collisions to zero by the year 2030), seat belt emphasis patrols, speed enforcement, cell phone, and texting while driving enforcement, and DUI-focused patrols.

The unit's two Police Support Officers (PSO) are primarily responsible for the enforcement of parking-related offenses throughout the city. The parking PSOs handled over 1000 online service requests and 600 calls for service, or a total of 1600 parking complaints in 2019, resulting in the issuance of over 290 parking citations and 500 warnings. The parking PSOs also assisted with traffic control at several significant incidents, and with transporting and processing arrestees during DUI emphasis patrols. Our Seven volunteers assist our PSOs with disabled parking enforcement. These volunteers have received specialized training in disabled parking enforcement, and in 2019 donated over 1,000 hours of their time, resulting in the issuance of 500 disabled parking citations and over 500 warnings.

The City of Bellevue continues to utilize photo enforcement cameras to enhance safety by supplementing our enforcement efforts in three school zones and four high-traffic intersections in the city for a total of nine cameras. The program resulted in 30,951 photo enforcement infractions in 2019, an increase of 7% compared with 2018. The goal of the photo enforcement program is to change drivers' behavior and reduce crashes caused by red-light violations and potential injuries caused by drivers speeding in school zones.

YEAR	TRAFFIC COLLISIONS	INJURY COLLISIONS	TRAFFIC FATALITIES
2015	1,994	475	3
2016	1,900	410	1
2017	1,639	420	2
2018	1,669	454	2
2019	1,467	401	5



2019 TRAFFIC ENFORCEMENT STATISTICS	
Traffic Service Requests	1,600
General Parking Infractions	2,900
Disabled Parking Infractions	500
Officer Issued Infractions	9,648
Photo Enforcement Infractions	30,951





Detectives search for evidence at the Goldsmith homicide scene

INVESTIGATIONS



John McCracken
Investigative Services Major

The Investigations Section enjoyed many successes this year, including several significant cases ending in a successful prosecution.

Following the first homicide in Bellevue in three years, detectives identified and arrested four suspects. Detectives also identified and dismantled several gym locker theft

rings, one of which interrupted a nationwide operation. Additionally, investigators arrested a thief preying on elderly residents at an assisted living facility.

Major John McCracken oversees the entire Investigations Section, Captain Travess Forbush leads the Investigations team, and Captain Dave Sanabria leads the Special Operations Group. Both Captains bring great skill and leadership to the division.

The continued success of the Investigations Section is dependent on the talented personnel that makes up our teams. These Detectives, Crime Analysts, Forensic Technicians, and others are dedicated to conducting quality investigations that help fulfill our department's mission to provide a safe place to live, work, and visit through quality law enforcement practices delivered by dedicated professionals. We focus our efforts and resources on reducing crime, reducing the fear of crime, and enhancing the quality of life for all who call Bellevue home.

The Violent Crimes Unit (VCU) consists of the Major Crimes Unit and the Special Assault Unit. The Major Crimes Unit (MCU) includes four senior detectives who investigate serious felony crimes, including homicides, robberies, sex crimes against adults, and felony assaults. MCU detectives also investigate crimes against

vulnerable adults. In 2019, investigations included:

- Gang-related homicide with four suspects in custody
- The arrest of rideshare driver believed to be responsible for multiple sexual assaults
- Arrests of home-invasion robbery suspects
- Assist with Mercer Island PD murder/suicide

The Special Assault Unit (SAU) comprises five detectives who investigate domestic violence cases and the sexual and physical abuse of children. These detectives require a high level of specialized training and expertise due to their work's sensitive nature. SAU also investigates Internet Crimes Against Children (child pornography) cases. In 2019, investigations included:

- Multiple Internet Crimes Against Children (child pornography) investigations and arrests
- Arrests of child rapists
- Returned long-term runaway engaging in self-harm

The Property Crimes Unit includes six detectives who investigate burglaries and other theft-related crimes and specializes in technical operations. The unit collaborates with other regional law enforcement partners and the King County Prosecuting Attorney's Office to target career criminals that operate in our jurisdiction and throughout the Eastside. Two detectives are trained as arson investigators, but residential burglary cases continue to be the primary focus of this unit. Our Technical Operations Detective duties are multi-faceted, and he routinely provides support to both the Investigations and Patrol Sections and other City of Bellevue departments as needed.

The Economic Crimes Unit (ECU) comprises three full-time detectives. ECU takes on complex financial investigations such as embezzlement, falsification of financial documents, and mortgage fraud. These types of investigations often require financial audits and records analysis. ECU detectives work with many outside

agencies, including the U.S. Attorney's Office, the U.S. Secret Service, Adult Protective Services, and the King County Prosecuting Attorney's Office. Examples of 2019 work are:

- 19-39222, A victim hired a CPA who pretended to help them with a \$500,000 overdue tax balance with the IRS. The suspect took \$144,000 and never sent any funds to the IRS. The suspect confessed to his actions and detectives forwarded charges to the King County Prosecutor.
- 19-30576, An elderly victim was convinced to invest close to \$1,000,000 in a fictional business by the relative of a caregiver. An intensive investigation resulted in charges sent to the King County Prosecutor.

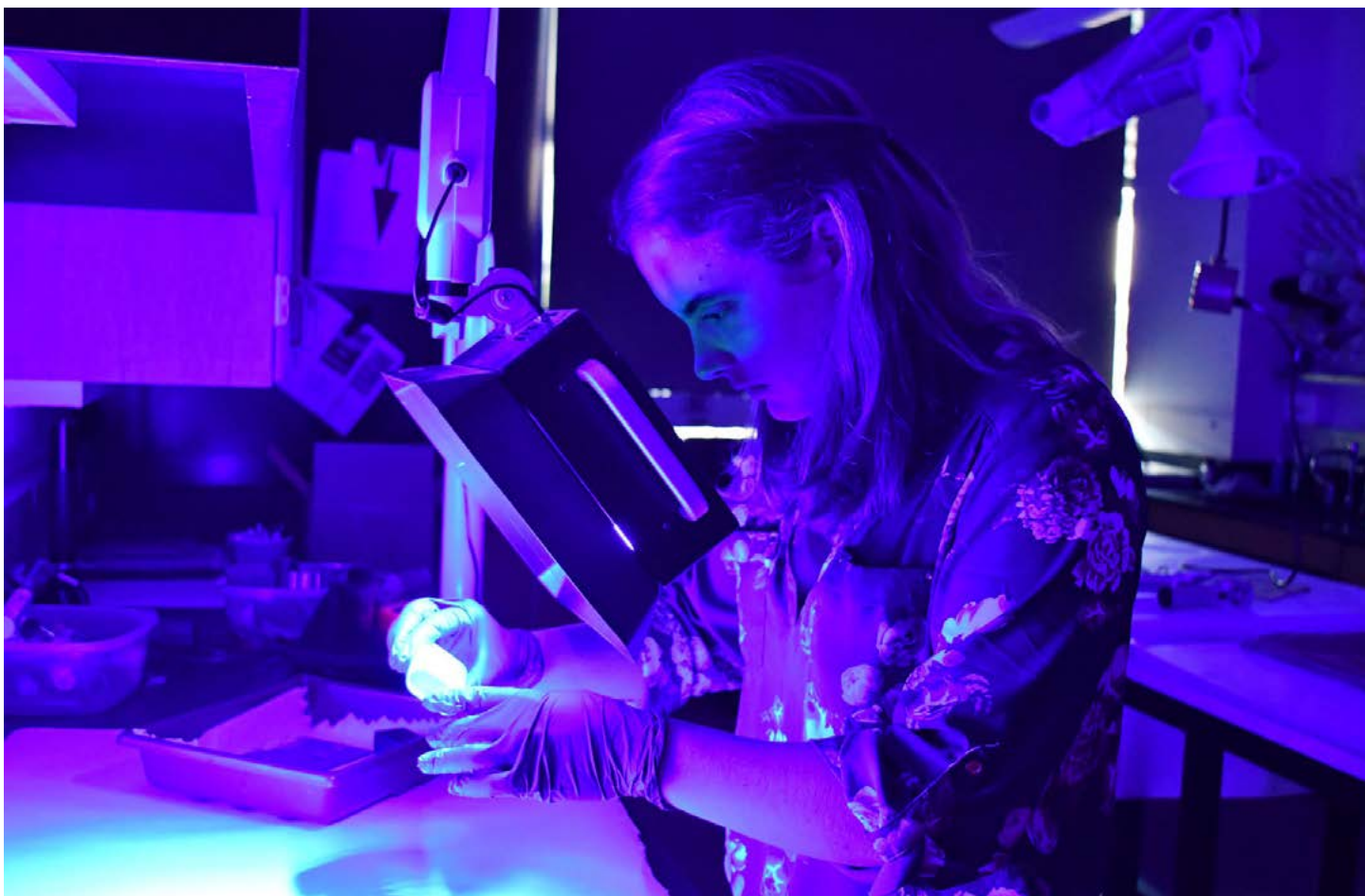
The Crime Analysis Unit (CAU) consists of a crime analyst and a data analyst, both civilians. Plus, a detective who serves in an analytical capacity and monitors Sex Offender Registrations. This group frequently identifies regional crime sprees that impact both Bellevue and neighboring jurisdictions. Unit members consistently provide support to detectives engaged in the multi-jurisdictional investigations. In 2019, this section was responsible for compiling over 200 photomontages in support of active investigations, which assist in identifying suspects, leading to criminal charges. The CAU works closely with the sector captains to

provide statistical and historical information about crime patterns and trends throughout the city. In addition to analyzing crimes, this unit maintains a regional focus, working closely with other analytical assets from neighboring law enforcement agencies. Critical to that mission is hosting an on-site Intelligence Analyst from the WA State Fusion Center under the Department of Homeland Security's urban area security initiative. Examples of 2019 work are:

- Assisted in identifying numerous crime trends impacting the City of Bellevue to include an extensive series of locker thefts that spanned several states
- Provided technical and analytical support during Goldsmith Park homicide investigation
- Produced and disseminated over 125 bulletins in support of local and regional investigations
- Served on the NORCAN conference committee and assisted in the bi-annual conference's organization in support of regional best practices among Northwest Analysts

Digital Forensics Lab consists of two full-time examiners responsible for recovering and examining data from computers and other electronic storage devices. Prosecutors use the data as evidence in criminal prosecutions. Digital Forensic Examiners use forensic tools and





Examining fingerprints in the Forensics Laboratory

investigative methods to find specific electronic data, including internet history, word processing documents, images, and other files. The Examiner also gives testimony in court regarding the evidence collected and keeps current on new methodologies and forensic technology.

Most requests handled by the examiners relate primarily to persons' crimes, which include child exploitation, rape of a child, and disclosure of intimate images. The remainder of the requests dealt with cases of death investigations, robbery, domestic violence, theft, and narcotics violations. Examples of 2019 work are:

- Assisted with evidence extraction during the Goldsmith Park homicide investigation
- Assisted with evidence extraction during multiple ICAC cases
- Assisted MIPD with murder/suicide case at Luther Burbank Park
- Assisted MIPD with accidental drowning of two missing boaters

The Bellevue Police Forensic Evidence Laboratory

is staffed by a Laboratory Manager and a Forensic Examiner. The lab provides forensic identification services, including latent fingerprint development and identification. The lab also collects and preserves biological and trace evidence and assists other law enforcement agencies. The Bellevue lab works in cooperation with the King County Regional Automated Fingerprint Identification Program and the Washington State Patrol Crime Laboratory system.

In 2019, the forensic lab received 491 laboratory examination requests, 1,359 pieces of evidence were analyzed, and 85 latent print case identifications were made. This highlights the critical role evidence plays in the resolution of criminal offenses. Many of these pieces were directly responsible for identifying unknown offenders across a wide range of crimes.

The forensic lab's primary service is to provide timely and reliable information to investigating



officers and detectives. Evidence processing techniques include physical, chemical, and fluorescent development of latent fingerprints. Potential suspects are generated by searching unknown latent fingerprints in the King County Regional, Western Identification Network, and the FBI's Next Generation Identification fingerprint databases. Biological and trace evidence is collected in their lab to facilitate a quicker response from the Washington State Patrol Crime laboratory.

The Forensic Examiner is also a Certified IBIS (Integrated Ballistics Identification System) Technician and submits the cartridge casings to the NIBIN (National Integrated Ballistic Identification Network). They also submit shoe impressions collected at crime scenes to SICAR (Shoeprint Image Capture and Retrieval) database.

The forensic lab helps facilitate training for our Crime Scene Investigators, officers, and detectives.

Special Operations Group

The Special Operations Group (SOG)

consists of 12 detectives, two sergeants, and a captain, who collectively bring vast experience to investigations, proactive practices, and considered regional leaders in proactive law enforcement. All members of the group actively engage in community meetings and outreach.

In 2019, SOG seized over 18 pounds of illegal narcotics, including 1500 pills of oxycodone and fentanyl. They also seized over \$114,000 from several narcotics dealers and took six handguns or similar weapons off the street.

The Narcotics Unit reduces the number of drug dealers in our community, disrupts and dismantles drug trafficking organizations, reduces the influence that drugs have in crimes committed and their negative impacts on our community, and makes drug dealing in Bellevue less profitable. The Narcotics Unit consists of three detectives.

In 2019, detectives worked with the US Postal Service to disrupt the delivery of illegal party drugs from the dark web, seizing 15 vials of Ketamine, ecstasy pills, and a large amount of cash. They also worked with Renton SET to arrest a mid-level narcotics dealer operating throughout King and Snohomish Counties. The street value of the narcotics seized from this dealer is estimated to be more than \$70,000.

The Special Enforcement Team (SET) works proactively to reduce crime in the City of Bellevue through traditional and innovative means. The unit is flexible and responsive to shifts in crime trends. Members of the team assist other department units and outside law enforcement agencies in targeting repeat offenders. The Special Enforcement Team consists of six detectives and a sergeant.

In 2019, SET detectives assisted in locating and surveilling the suspects in the Goldsmith Park homicide. They located one of the weapons used in the homicide and traveled to Everson, WA, to arrest one of the suspects. SET also investigated a rash of gym locker thefts from health clubs in multiple Bellevue locations. Thieves would

break into lockers to steal credit cards and make fraudulent purchases while victims worked out. Their investigation tied these suspects to a nationwide ring of thieves who targeted locker rooms in Washington, California, Minnesota, Colorado, and Texas clubs.

The Vice Unit reduces prostitution-related crimes in the City of Bellevue through the identification and intervention of sex trafficking victims, enforcement of prostitution-related criminal enterprises, and by reducing the demand for prostitution-related services. There are two detectives assigned to the unit.

The unit uses an innovative and multiprong approach to combat human trafficking and prostitution in our city. Detectives created a BPD Vice Account on an adult web-site offering services to sex providers to assist them out of the life of prostitution. This approach, which involved law enforcement reaching out directly and offering assistance before prostitutes were contacted as part of an investigation, received praise from both anti-trafficking groups and prosecutors.

The Vice Unit conducted a successful two-day “John” Prostitution sting operation out of a downtown hotel. Throughout two afternoons, the team arrested 12 men who came to Bellevue

to patronize a prostitute. Further, the suspects arrested in this operation are the first group of offenders who will be required to complete a 12-week Men’s Accountability diversion program hosted by the Seattle Against Slavery organization. Detectives continue to locate and shut down any brothels operating in our city.

The Joint Terrorism Task Force Detective works with the FBI to investigate terrorist acts and apprehend individuals who may commit or plan to commit terroristic crimes within the region. The JTTF Detective provides the city with access to global intelligence of threats and trends that may impact Bellevue citizens’ safety. There is one detective assigned to this position, and as an auxiliary assignment, he is a member of the Threat Management Team (TMT) at the City of Bellevue. The TMT responsibilities include preventing workplace violence by assessing the danger or harm that may result from a threat to city employees or city facilities. One example of the JTTF Detective’s work in 2019 was related to threats made by an individual using a Bellevue-based internet platform. Based on the information developed by the JTTF Detective, the suspect was arrested in California for the threats. The suspect possessed weapons that could have been used to accomplish his threat.



Assistant Chief Carl Kleinknecht gives an interview at a crime scene



Officer Denzel Kankam shops with some kids during the annual Shop with a Cop event

ADMINISTRATIVE SERVICES



Jonathan Hoffman
Administrative Services Major

The Administrative Services Section is the “behind the scenes” section vital to the Police Department’s smooth operation.

It also represents the department’s public face in the form of the records unit and volunteers that provide essential services to the community. The section consists of the Personnel Services

Unit (Training and Hiring), Courts and Custody, Property and Evidence, Records, and our Volunteer Program.

The Records Unit provides the public with non-emergency services and is responsible for managing all case reports and public records created by the department. Walk-in services include processing requests for local clearance letters, fingerprinting services, concealed pistol license (CPL) applications, firearm dealer license applications, and requests for information on services provided by other departments or agencies. The Records Unit is also responsible for fulfilling public records requests. Records personnel are responsible for fingerprinting applicants for concealed pistol licenses as well as all police and city contract employees. The

records unit also provides support services to the Operations and Investigations Divisions, including assistance with criminal background checks.

The Courts & Custody Unit (CCU) manages our holding facilities at Bellevue City Hall and Bellevue District Court, and all in-custody prisoners, and paperwork associated with the District, Juvenile, and Superior Courts. The Sergeant manages and monitors prisoners who are being transported to and from court appearances, serving jail sentences, assigned to electronic home detention, or on work release. The Sergeant also analyzes the daily jail population and the location of currently detained inmates to ensure the Department is utilizing the most cost-effective incarceration options. The Sergeant is the primary liaison between our contract jails, the District Court, and other supporting agencies.

The Court Liaison Officer (CLO) tracks all criminal cases referred by police officers to court for filing charges.

The CLO facilitates follow-up work requests from the prosecutor and acts as an information source for Department personnel who request case disposition or court information.

The CLO delivers completed criminal cases to District, Juvenile, and Superior Courts. The CLO is also responsible for tracking all court subpoenas delivered to the Police Department.



RECORDS STATISTICS	
Public Disclosure Requests	4,798
Persons Fingerprinted	844
Active NCIC Records Validated	1,310
Domestic Violence Protection Orders Processed	1,101
Gun Purchases/Transfers	1,980
Concealed Pistol Licenses	952
Record Checks: CJIS Security Background Checks	344
Expungements/Vacates	71

Includes protection orders, missing persons, stolen vehicles & boats, stolen license plates, stolen firearms, stolen parts, violent persons, and identity theft victims)

Police Support Officers (PSOs) are responsible for prisoner processing and transports to and from our court and the three contract jails. They assist police officers by picking up and transporting prisoners from the field and providing booking assistance to help our officers get quickly back in the field. PSO's provide seven days a week assistance to the patrol unit, participate in the training of all newly hired officers, and assist with completing CALEA proofs and standards.

The Property and Evidence Unit consists of four civilian team members, one supervisor, and three technicians. They manage the intake, storage, and disposal of property and evidence collected by Bellevue Police officers during public safety operations. The team works closely with patrol officers, detectives, and Records personnel by providing assistance and information regarding the handling and booking of evidence. Members provide support during search warrants and other events which require the processing of large quantities of evidence or property. The unit ensures all booked evidence and property is tracked properly stored according to state and federal regulations. The

unit also manages the test firing of firearms and entry of casings into the Integrated Ballistics Identification System and the National Integrated Ballistic Information Network (IBIS/NIBIN). Additionally, it's responsible for tracking and timely testing of Sexual Assault Kits recovered during the investigation of rape and sexual assault cases. Once the property or evidence items are no longer needed, they are responsible for returning items to their rightful owner or destruction of the items.

The Personnel Services Unit (PSU) is responsible for recruiting, hiring, and training new employees for the Bellevue Police Department. They also manage the in-service and continuing professional development for Bellevue Police Department officers and staff.

The Personnel Service Unit Captain oversees a staff of twelve including a sergeant, two background investigators/recruiters, three training officers, a quartermaster, and an administrative assistant.

Defensive Tactics (DT) and Use of Force

The safety of the public and our officers are among the Personnel Services Unit's highest



Weapons training at the shooting range

priorities. In 2019, each Bellevue police officer received 174 hours of training in a variety of disciplines. The critical areas of training included confrontation de-escalation techniques, certification in TASER use, and the yearly required pistol and patrol rifle recertification. Additionally, the defensive tactics training team conducted quarterly defensive tactics and integrated force training. It provided all officers and detectives with eight hours of practical hands-on training in the use of control and defensive tactics. Each commissioned officer also completed active shooter training, including classroom and realistic scenarios involving role players to simulate what officers might face in a real-life event. Other training emphasized realistic de-escalation, proper use of force under various lighting conditions, using control techniques, and the use of a TASER, and/or pistol, when justified. All officers and detectives completed five hours of dynamic firearms

training that included movement, shooting, addressing multiple targets, and reloading. All armed personnel also completed two separate comprehensive firearms qualifications in May and November.

Newly hired officers with no experience (entry-level) receive 720 hours of training from the State's Basic Law Enforcement Academy. Additionally, the department provided each of our entry-level officers hired in 2019 with an additional 47 hours of defensive tactics training, 62 hours of firearms training, and eight hours of TASER training. Lateral officers (experienced officers that are new to BPD) received 25 hours of defensive tactics training, 46 hours of firearms training, and eight hours of TASER training. New hire training continues to increase each year, requiring more PSU resources than ever before.



Active shooter training

Volunteers

The Bellevue police volunteer program celebrated its 25th year in 2019. Many volunteers continue to staff our Factoria and Crossroads substations. Others provide disabled and fire lane parking enforcement throughout the city, shuttle police vehicles to and from the city's vehicle service center, retrieve abandoned bicycles, assist detectives with pawned property investigations, and provide informational resources to burglary and identity theft victims.

We expanded the volunteer program this year added two new groups, event ambassadors and Paws on Patrol. Event Ambassadors assist with special events such as Snowflake Lane and the Bellevue Arts Fair. Paws on Patrol enlists dog owners to be alert to and report suspicious activity they observe in their neighborhood while out of their daily walks. These two initiatives significantly increased opportunities for people to volunteer with the department and resulted in a total of almost 46,000 hours of service.



Bellevue Police volunteers

HIRING AND TRAINING

Officer and Non-Commissioned Staff Hiring

year	Officers	Non-Commissioned
2015	18	0
2016	15	6
2017	19	5
2018	19	7
2019	22	5



Training Hours for Commissioned Officers

year	Hours Trained	2019
2015	40,077	32,455 HOURS
2016	34,392	
2017	20,749	
2018	24,593	
2019	32,455	



Average Hours of Training per Officer
2019
174
HOURS



Assistant Chief Kleinknecht swearing in Officers Jackson and Fairfax



Community engagement

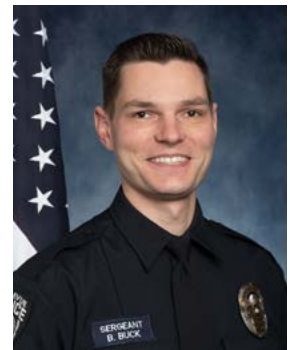
2019 AWARDS AND PROMOTIONS



Civilian Employee of the Year
Kristina Galloway



Officer of the Year
Tyler Cornmesser



Sergeant of the Year
Benjamin Buck

Years of Service Awards

30 Years

Detective Jennifer Robertson

25 Years

Captain Debbie Ingram

Sergeant Michael Shovlin

Sergeant Dave Deffenbaugh

Detective Bob Dentz

Volunteer Coordinator Marj Trachtman

20 Years

Sergeant Colin Sullivan

Detective Andy Norton

Detective Rob Welty

Detective Doug Brennan

Budget Analyst Julie Orta

15 Years

Detective Justin Hodges

Detective Marc Halsted

Detective Amir Mousavi

Detective Rachel Neff

Detective Greg Oliden

Promotions

Bryan Marin to Corporal

Scott White to Corporal

Brooke Markham to Courts and Custody
Administrator

John Hill to Lead Police Support Specialist

Sarah Kasperski to Police Support Administrative
Assistant

Ruby Daly to Crime Prevention Coordinator

Retirees

Lynne Zirkle – 34 Years

Jim Lindquist – 32 Years

Sheila Evans – 30 Years

Tory Mangione – 28 Years

Marcia Harnden – 26 Years

Brad Estill – 22 Years

Suzanne Johnson – 20 Years

Penny Kerksen – 18 Years

Carl Krikorian – 15 Years



VISION

WE WILL STRIVE TO DELIVER THE HIGHEST STANDARD OF POLICE SERVICES TO THE PUBLIC BY WORKING IN PARTNERSHIP WITH THE COMMUNITY, EMBRACING DIVERSITY, BUILDING TRUST AND EMBODYING TRANSPARENCY.

MISSION

TO PROVIDE A SAFE PLACE TO LIVE, WORK AND VISIT THROUGH QUALITY LAW ENFORCEMENT PRACTICES DELIVERED BY DEDICATED PROFESSIONALS.

WE FOCUS OUR EFFORTS TO REDUCE CRIME, REDUCE THE FEAR OF CRIME, AND ENHANCE THE QUALITY OF LIFE FOR ALL WHO CALL BELLEVUE HOME.

GUIDING PRINCIPLES

RESPECT INTEGRITY ACCOUNTABILITY SERVICE





Bellevue
Police Department