



# 136th Ave NE Water Inlet Station and NE 8th St Transmission Main Project

Fact Sheet - Summer 2020

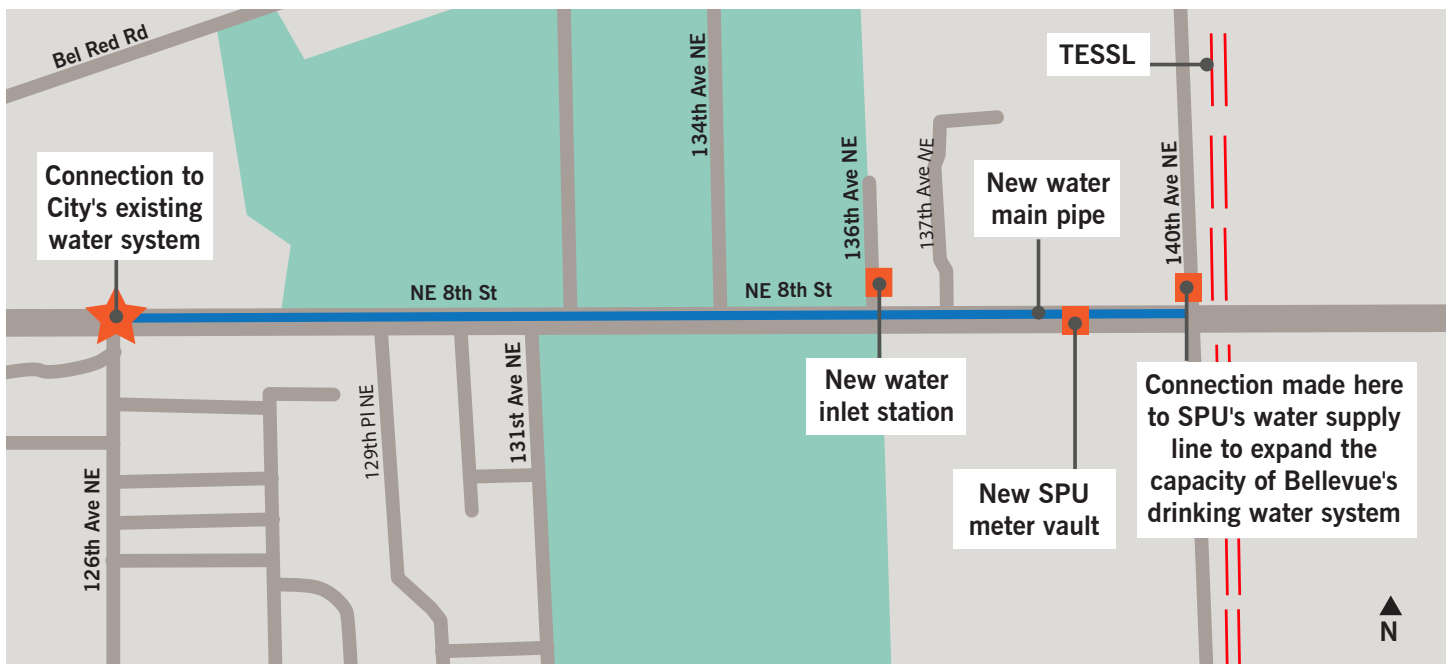
## ABOUT THE PROJECT: Planning for growth

As Bellevue continues to grow, Bellevue Utilities has a program to expand the supply and reliability of Bellevue's water system for domestic use and fire protection. As part of this program, Bellevue Utilities plans to build a new water inlet station with underground vaults and a large pipe to draw water from the Seattle Public Utilities (SPU) regional supply line that is in the area. Bellevue purchases its water from SPU.

The site for the new inlet station is located on 136th Ave NE, just north of NE 8th St. The connection to the SPU supply line (called the Tolt Eastside Supply line or "TESSL") will be made at the intersection of 140th Ave NE and NE 8th St. A large water main pipe (20 to 24 inches in diameter) will be installed along NE 8th St from 140th Ave NE and will connect to the existing pipe system at the intersection of NE 8th St and 126th Ave NE. See map below.



Bellevue continues to grow. Picture of Downtown Bellevue by Colin Walker, City of Bellevue.



The project area includes the new water inlet station site on 136th Ave NE and new transmission main pipes and connections on NE 8th St extending east from 126th Ave NE to 140th Ave NE. The new pipes will connect to the Seattle Public Utilities (SPU) Tolt Eastside Supply Line (TESSL), the regional water supply pipeline.

# BELLEVUE UTILITIES: 136th Ave NE Water Inlet Station Project and NE 8th St Transmission Main Project

Bellevue Utilities began construction on the 136th Ave NE Water Inlet Station and NE 8th Transmission Main in June 2020. Construction is expected to last for approximately one year. Review the project map to see the work areas.

## HOW TO STAY UP TO DATE

Visit our website where we will post the most up to date information:

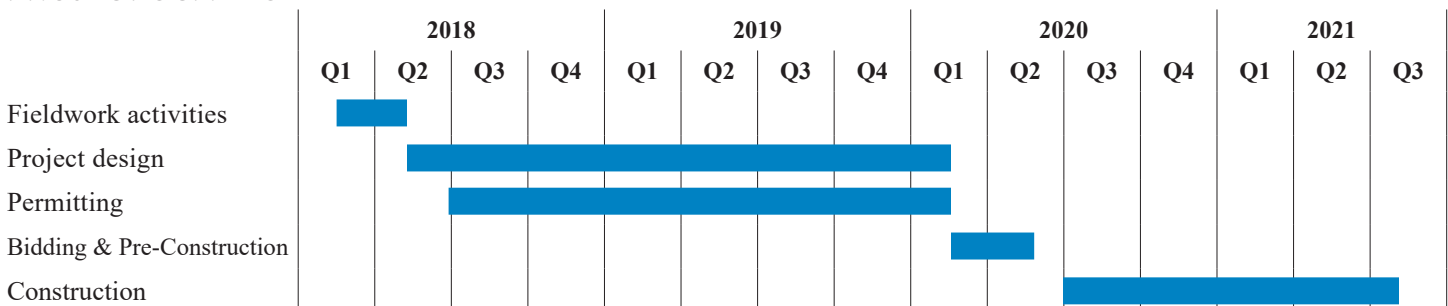
[www.bellevuewa.gov/136thInletStation](http://www.bellevuewa.gov/136thInletStation)

## WHAT TO EXPECT DURING CONSTRUCTION:

- **Noise and vibrations:** Crews will install a shoring wall by auguring (drilling) steel columns into the ground to hold back soil during the excavation for the inlet station installation, followed by concrete forming and pouring, and other related work. This work will involve trucks and machinery, could be noisy at times, and vibrations may be felt. All work will be conducted within the permitted limits for noise and vibrations.
- **Temporary bypass road on 136th Ave NE:** To build the water inlet station, the entrance of 136th Avenue NE will be blocked and used for the work area. A temporary bypass road will be created around the work site to allow property owners on 136th Ave NE to access to their driveways at all times.
- **Trucks, excavators, and other machinery will regularly occupy work areas to complete work:** The active work zone on NE 8th St will move as the transmission mainpipe is installed. Lane closures can be expected while crews install the transmission main pipe on NE 8th St.
- **Traffic impacts on NE 8th St:** Work in the intersection of NE 8th St and 140th Ave NE will connect the new transmission main pipe to the TESSL. This work may last up to a month and may create traffic backups as some lanes will be closed to complete work. Flaggers will direct traffic and pedestrians around the work area. One crosswalk will be closed to complete the work in the intersection. It is possible some of this work may be completed overnight to alleviate traffic impacts during the day (yet to be determined).

When construction is complete, areas on 136th Ave NE and NE 8th St will be restored to previous existing conditions, including a new asphalt pavement overlay.

## PROJECT SCHEDULE\*



\*Schedule subject to change

## QUESTIONS? CONTACT US:

Jay Hummel, P.E.  
Project Manager / Bellevue Utilities  
425-452-4160  
[JHummel@bellevuewa.gov](mailto:JHummel@bellevuewa.gov)

Engineering and Design Construction  
425-452-6977 (24 hours)



Learn more at our website: [www.bellevuewa.gov/136thInletStation](http://www.bellevuewa.gov/136thInletStation)