



136th Ave NE Water Inlet Station Project

Fact Sheet - Winter 2020

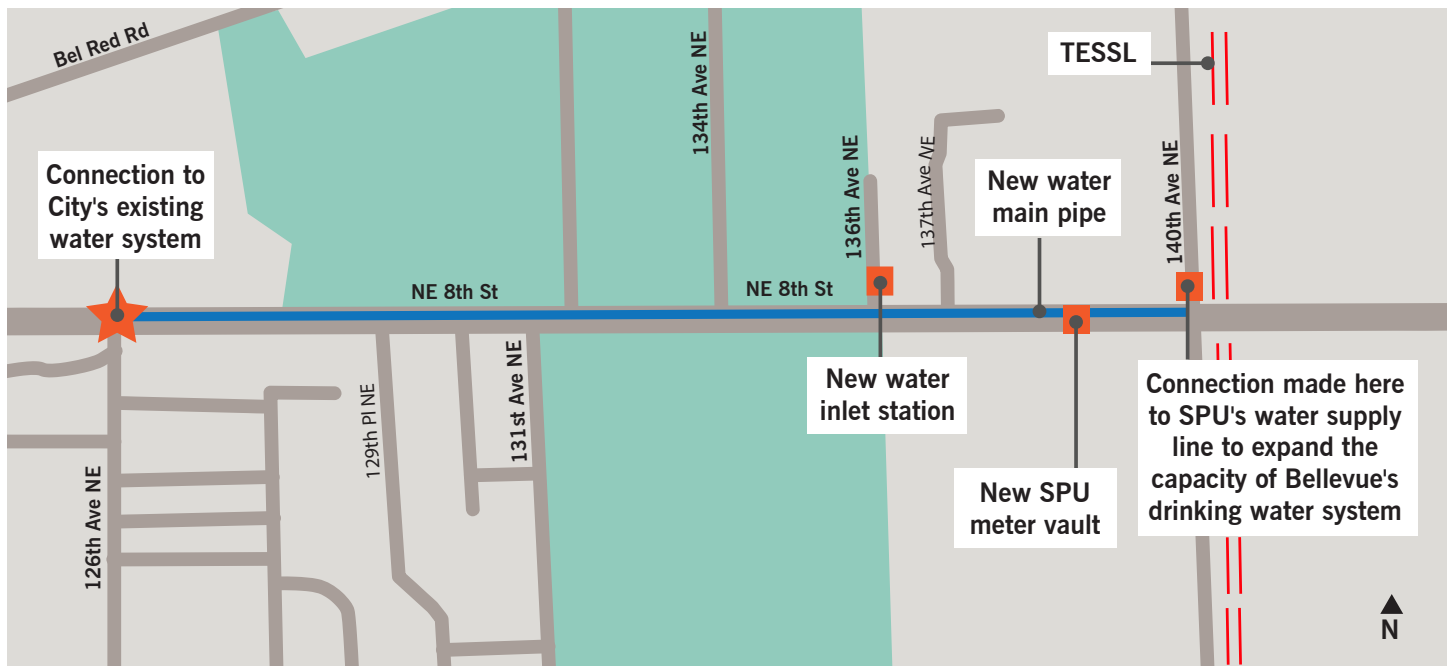
ABOUT THE PROJECT: Planning for growth

As Bellevue continues to grow, Bellevue Utilities has a program to expand the capacity of the City's drinking water system. As part of this program, Bellevue Utilities plans to build a new water inlet station with underground vaults and a large pipe to draw water from the Seattle Public Utilities (SPU) regional supply line that is in the area. Bellevue purchases its water from SPU.

The site for the new inlet station is located on 136th Ave NE, just north of NE 8th St. The connection to the SPU supply line (called the Tolt Eastside Supply line or "TESSL") will be made at the intersection of 140th Ave NE and NE 8th St. A large water main pipe (20 to 24 inches in diameter) will be installed along NE 8th St. from 140th Ave NE and will connect to the existing pipe system at the intersection of NE 8th St and 126th Ave NE. See map below.



Bellevue continues to grow. Picture of Downtown Bellevue by Colin Walker, City of Bellevue.



The project area includes the new water inlet station site on 136th Ave NE and new transmission main pipes and connections on NE 8th St extending east from 126th Ave NE to 140th Ave NE. The new pipe will connect to the Seattle Public Utilities (SPU) Tolt Eastside Supply Line (TESSL), the regional water supply pipeline.

BELLEVUE UTILITIES: 136th Ave NE Water Inlet Station Project

Construction is anticipated to begin in late spring 2020 and last for approximately one year. This schedule is subject to change once a construction contractor has been selected this spring. Review the project map to see the work areas.

WHAT TO EXPECT DURING CONSTRUCTION:

- **Noise and vibrations** from construction activities. All work will be conducted within the permitted limits for noise and vibrations.
- **Trucks, excavators, and other machinery** occupying work areas in the road and rights of way.
- **Traffic impacts on NE 8th St.** Flaggers will direct two-way traffic around work areas and lane closures during work hours (Typically 7:30 a.m. - 4:00 p.m.). Traffic control measures will remain in place at all times, such as signage and steel plates, so travelers are able to move through the area safely.
- **Work at the intersection of 140th Ave NE and NE 8th St.** Work in this intersection will connect the new transmission main pipe to the regional Tolt Eastside Supply Line (TESSL). It is a busy intersections so some of the work may be completed overnight from 8:30 p.m. - 4:30 a.m. One crosswalk will be closed temporarily as well for the duration of this work. This work is anticipated to last about two to three weeks.

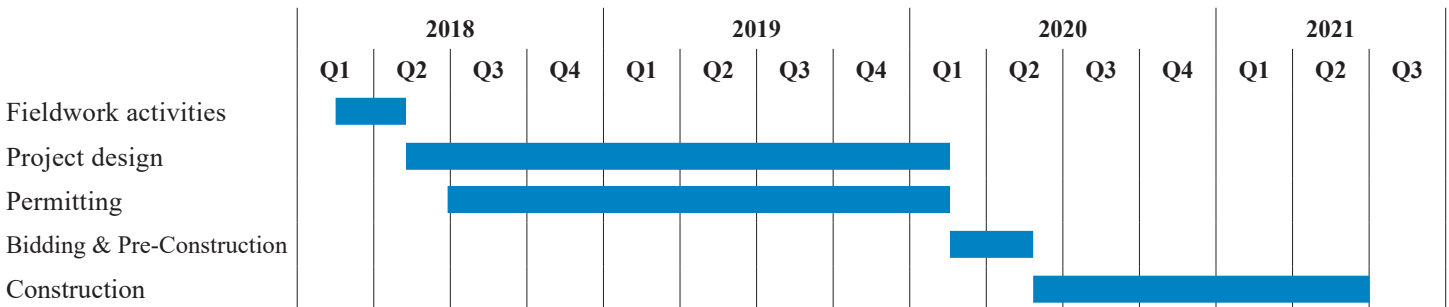
When construction is complete, areas on 136th Ave NE and NE 8th St will be restored to previous existing conditions, including a new asphalt pavement overlay.

HOW TO STAY UP TO DATE

The city is hosting a drop-in session during the winter of 2020 before construction begins for the community to learn about the project and construction and have conversations with the project team. Updates are posted on our website, and will be posted throughout construction.

If you have any questions or concerns, please reach out to the Project Manager, Jay Hummel.

PROJECT SCHEDULE*



*Schedule subject to change

QUESTIONS? CONTACT US:

Jay Hummel, P.E.
 Project Manager / Bellevue Utilities
 425 452 4160
 JHummel@bellevuewa.gov

Learn more at our website: www.bellevuewa.gov/136thInletStation

