

# neighborhood news



October 2019

news for and about  
Bellevue neighborhoods

## Tour a fire station and you might win an epic ride to school!

Saturday, Oct. 12, 10 a.m.-4 p.m.

Imagine a child you know pulling up to school in a lights-flashing fire engine. At this year's Bellevue Fire Department Open House, children can complete a home escape plan for a chance to win a "Red Hot Ride to School" in a Bellevue fire engine!

But that's not all – Bellevue fire crews have a full day of fun and safety awareness planned at all of the city's nine fire stations. Meet your local firefighters and paramedics and get an inside look at the fire station. You can also tour the fire engines and aid cars, learn how to use a fire extinguisher, practice hands-only CPR, watch stove-top fire demonstrations and learn about emergency preparedness.

All nine stations will have their doors open to welcome you, and light refreshments will be served.

### Fire Station Locations:

- Station 1 – 766 Bellevue Way SE
- Station 2 – 2802 148th Ave SE
- Station 3 – 16100 NE 8th ST
- Station 4 – 4216 Factoria Blvd. SE
- Station 5 – 9621 NE 24th ST
- Station 6 – 1850 132nd Ave NE
- Station 7 – 11900 SE 8th ST
- Station 8 – 5701 Lakemont Blvd. SE
- Station 9 – 12412 Newcastle Way



## Neighborhood Enhancement Program (NEP)

### Update for Lake Hills and Downtown/BelRed



Lake Hills residents: Vote for your top three enhancement project choices. Please return the postage-paid ballot each household received in the mail in September. Voting is by mail only and is limited to one ballot per household. Ballots must be postmarked by Oct. 23 to be valid. Information on the 24 enhancement projects on your ballot can be found at: [BellevueWA.gov/city-government/departments/community-development/neighborhoods/neighborhood-improvement/neighborhood-enhancement-program/neighborhood-areas/lake-hills-nep](http://BellevueWA.gov/city-government/departments/community-development/neighborhoods/neighborhood-improvement/neighborhood-enhancement-program/neighborhood-areas/lake-hills-nep)

Downtown/BelRed residents: Please let us know how you liked the NEP process in your area. Two new capital improvement projects are coming to your neighborhood area:

- NE 8th Street pedestrian enhancements over Interstate 405
- Downtown Park southeast corner stairs

Please return the postage-paid evaluation form postcard each household received in the mail in September or submit your comments online using the NEP evaluation form found at [BellevueWA.gov/nep](http://BellevueWA.gov/nep).

Evaluations must be postmarked or submitted by Oct. 30.

The NEP is a city-funded program that allows residents to propose and select modest capital improvement projects to enhance their neighborhoods. The program rotates through the city's 14 NEP neighborhood areas, serving two areas each year. The \$5 million annual

*Continued on next page*



Subscribe to Neighborhood News electronically:  
[BellevueWA.gov/neighborhood-news](http://BellevueWA.gov/neighborhood-news)

Continued from previous page

program allocation is distributed among each of the NEP neighborhood areas, according to the number of households in each area.

Next on the list for NEP, in 2020, are the Crossroads and Wilburton neighborhoods. Crossroads will kick off in late January. Look for NEP to come to Wilburton in early April. To find out which NEP neighborhood area you call home, when NEP will be in your area and how much funding your area has been allocated, please visit [BellevueWA.gov/nep](http://BellevueWA.gov/nep).



## Learn about the trees of Downtown Bellevue!

Trees are a very important element of Bellevue's neighborhoods, and that includes Downtown Bellevue! The city's Tree Tour program, which began in 2018, helps participants explore the urban forests right outside their doors. Previous tour attendees learned about the beautiful natural elements throughout Ardmore Park and Weowna Park. This fall, we're kicking off a new round of tours at Downtown Park!

You're invited to join Bellevue's urban forestry specialist for one of our upcoming October walking tours! You'll learn a bit about our urban forest, notable trees and the history of land uses downtown. The tree tours will be lighthearted, educational, and suitable for all ages.

### Upcoming Tours:

- Friday, Oct. 11, 12 p.m. RSVP at [BellevueWA.gov/trees](http://BellevueWA.gov/trees)
- Saturday, Oct. 12, 11 a.m. RSVP at [BellevueWA.gov/trees](http://BellevueWA.gov/trees)
- Meet at the main parking lot on the west side of Downtown Park.
- You can learn more about the tree tours at [BellevueWA.gov/trees](http://BellevueWA.gov/trees).

## "What's age got to do with it?"

Tuesday, Oct. 29, 1-2:30 p.m.

Crossroads Community Center

16000 NE 10th St, Bellevue, WA



During October's Cultural Conversations, speaker Dori Gillam will pose the question, "How can we talk about age in a more positive and affirming way?" In employment decisions, family discussions, medical

care, and even in birthday cards, assumptions about being "over the hill" or "a lazy kid" are common. Society sometimes expresses stereotypes about generations using the phrases "You look good for your age" or "You're too young to understand." In this interactive and fun talk, Dori welcomes every generation to explore how we can begin to value all ages. Diverse cultural perspectives can add another valuable component to this conversation.

Dori Gillam has researched and spoken on ageism and aging for over 30 years. Her past roles include community organizer, trainer, and speaker for AARP and the King County Library System. Gillam is the board chair for the Northwest Center for Creative Aging. She writes for 3rd Act Magazine and is a charter member of Age Friendly Seattle.

Cultural Conversations, a program in its tenth season, has transformed relationships and perspectives among diverse women in our community through education and storytelling. Please join us for tea and conversation. Women of all ages, faiths and cultures are encouraged to attend. To fully participate in the sharing, attendees should plan for childcare. Your RSVP is appreciated, [NeighborhoodOutreach@bellevuewa.gov](mailto:NeighborhoodOutreach@bellevuewa.gov) or 425-452-6836.





## Coffee with a Cop

Enjoy a cup of coffee with officers from the Bellevue Police Department in another “Coffee with a Cop” Event. We’ll be hanging out at local coffee shops and ready to talk about anything that concerns you. We encourage you to come with your questions, compliments, and even complaints! We’re here to listen.

“Coffee with a Cop” is an event designed to build trust and create relationships between the Police Department and the community it serves. There’s no agenda; it’s just an opportunity to have coffee with a cop and chat. Here are the times and locations for this year’s event:

- **Wednesday, Oct. 2**
- **8:30-10 a.m.**  
**Starbucks, 1645 140th Ave NE, Bellevue**
- **1-2:30 p.m.**  
**Cypress Coffee, 3080 148th Ave SE, Bellevue**

The “Coffee with a Cop” program began in 2011 when the Hawthorne, Calif., police department was looking for better ways to connect with residents. Since then, the program has spread like wildfire with events in all 50 states. It is one of the most successful community-oriented policing programs across the country, allowing residents to interact with officers outside of a crisis. Be sure to stop by and enjoy “Coffee with a Cop” at one of the scheduled Bellevue locations!

## Barn animals, live music and pumpkins at Kelsey Creek Farm Fair

Kelsey Creek Farm Fair delivers old-fashioned fun!

Families with electronics-loving children can look forward to a break from screen time at the 37th annual Kelsey Creek Farm Fair.

**Saturday, Oct. 5, 11 a.m.-4 p.m.**

The fair includes live music and dance by Nancy Stewart and the duo Cowboy Buck and Elizabeth, hands-on pioneer activities, Kelsey Creek Critter 4-H, pony rides, tractor-pulled wagon rides by Northwest Vintage Tractor Club, a food truck, and a pumpkin patch plus decorating.

Free shuttles to Kelsey Creek Farm will run from Bannerwood Sports Park, 16830 132nd Ave. SE, and the Wilburton Park and Ride, 720 114th Ave. SE. The last shuttle will leave the farm at 4:15 p.m.

The annual fall gathering started in 1982 when art classes pooled their crafts for an old-fashioned holiday arts fair. Over 200 visitors briefly enjoyed the pasture decorated with bows and ribbons before the goats ate the decorations.

Over time, the Kelsey Creek Farm Fair has grown in popularity, becoming a fall staple with over 5,000 visitors annually. For more information, call 425-452-7688 or email [kelseycreekfarm@bellevuewa.gov](mailto:kelseycreekfarm@bellevuewa.gov).

Please note that there is not an ATM on site, and pets are not allowed in the barnyard area. For more information, call 425-452-7688 or email [kelseycreekfarm@bellevuewa.gov](mailto:kelseycreekfarm@bellevuewa.gov).

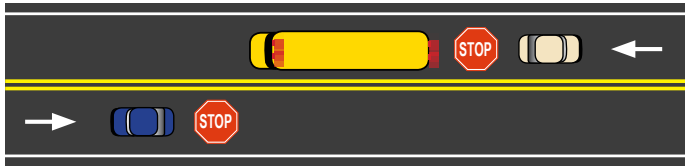


## Know when to stop for school buses

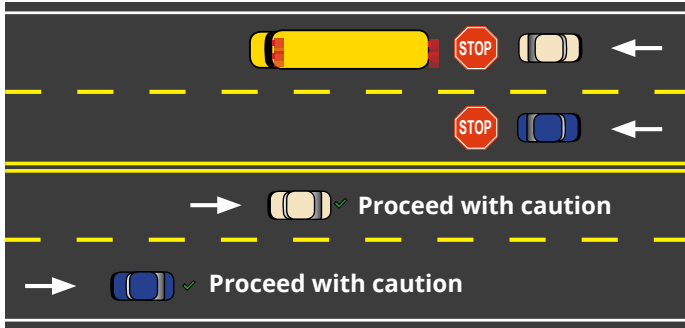
With more students on our roadways and sidewalks, and the days getting shorter, please drive, ride and walk safely. Slow down in school zones; it's the law! As a refresher, check out our graphic below detailing the scenarios in which you would stop for a school bus.

### When to stop if school bus lights are flashing or stop bar is out.

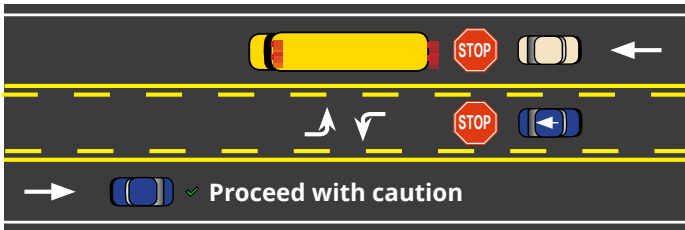
#### 1 2-lane roadway: both directions stop



#### 2 3+ lanes: stop if traveling same direction as bus



#### 3 Turning lane: stop if traveling same direction as bus



#### 4 Median: stop if traveling same direction as bus



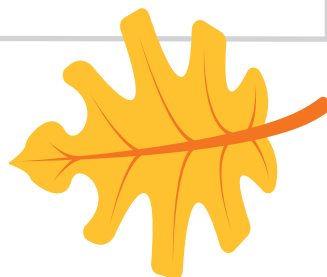
 \$422 fine if violating any of the above

## Protect your home from flooding

When heavy fall and winter rains begin, many homes can face problems with flooding. As a homeowner, it's important to understand your home's vulnerabilities and how to prevent flooding issues and damage.

Before this season's storms hit, consider taking the following important steps:

- Remove leaves from clogged storm drain grates near your home. Bellevue Utilities services 20,000 storm drains around the city. "Adopting" your local drain can make a big difference to help prevent a flood emergency before it occurs;
- Call Bellevue Utilities 24-hour hotline at 425-452-7840 if the storm drain appears blocked below the street surface, or if it is unsafe to clear a clogged drain;
- Install a sump pump to protect your basement from water damage – and test it before storms;
- Preserve natural drainage systems by not filling in ponds, wetlands or ditches;
- Keep debris like trash and grass clippings out of streams. If you see dumping, please call Utilities at 425-452-7840;
- Leave natural vegetation on steep slopes and along streams and lakes. Plants slow stormwater runoff, filter pollutants and stabilize the earth to prevent landslides.



If you have any questions or need advice about drainage problems, we are here to help. Please contact Utilities any time at 425-452-7840.

## Tips on handling disputes with neighbors



Have you left a conversation with a neighbor feeling frustrated - like they didn't hear a single thing you said about the barking dog, the parking, the property line or your fence?

You can use conflict as an opportunity to build and strengthen neighbor relations!

Here are a couple of quick tips for dealing with the frustration:

Ask yourself whose problem is it? Your response affects your neighbors, just as what they do affects you.

Take time to cool off before approaching neighbors.

To learn how to communicate directly and politely, consider registering for "The Art of Listening" classes through the Bellevue Conflict Resolution Center. Contact [BCRC@bellevuewa.gov](mailto:BCRC@bellevuewa.gov) for details.

**Still need help?** Seek the help of an impartial resource at the Bellevue Conflict Resolution Center. [BCRC@bellevuewa.gov](mailto:BCRC@bellevuewa.gov) or 425-452-4091.

## Never approach a car prowler

Twice recently, Bellevue Police had direct encounters with armed car prowler suspects. It's rare for officers to catch a car prowler in action, and even more unusual for a suspect to be armed, but these incidents show just how dangerous car prowler situations could be. In one case, the suspect fired at an officer as he fled the scene. In the other situation, the prowler tossed his weapon and ran. Luckily no one was injured during these encounters, but the situation prompted a warning for residents from Bellevue PD.

"While we want residents to be good witnesses if they see a crime, our top priority is their safety," said Captain Travess Forbush. "Please, never confront a criminal. They may be armed or desperate, and you don't know how they'll react. Call 911 and if possible, get the best description of the suspect you can, but never put yourself in danger."

To prevent car prowls, Bellevue Police recommend adopting the "lock it, hide it, keep it" method.

**Lock it:** Always lock your car, even if you're away for only a short time. An experienced car prowler can break

into a parked vehicle in less than a minute.

**Hide it:** If you must leave items in your car, make sure they are well hidden before you arrive at your destination. Car prowlers might be watching you.

**Keep it:** Whenever possible, keep your valuables with you. Among the top items stolen from vehicles are laptops, cell phones and chargers, cash, mail, workout bags and garage door openers. You should never leave a garage door opener in a parked car.

It's also important to park in a well-lit area. Cut back trees or bushes for more visibility around your home and be aware of your surroundings when you leave or return to your car.

If you are a victim of a car prowler, you can report it [online](#). It is important to report prowls so Bellevue detectives can track where and when they are happening. If you'd like more information, check out the [crime prevention](#) section on the Bellevue Police website.



## Free program counters congestion with commute options for businesses



With regional traffic challenges, a commercial building boom and construction impacts from the East Link light rail project impacting commuters, what's an employer to do? The City of Bellevue can help with convenient, cost-effective solutions tailored to businesses.

The city's Choose Your Way Bellevue Business Services program ([ChooseYourWayBellevue.org/business](http://ChooseYourWayBellevue.org/business)) is a collaboration with King County Metro and TransManage, a service of the Bellevue Downtown Association.

The program offers Bellevue employers with five or more employees a free consultation to inform them of commute options and resources customized for their worksites. Taking part can boost your company, help your employees choose optimal commuting options and ease the strain on the transportation system.

Resources include financial support for employee transit passes, ORCA starter cards, help with pre-tax commuter benefits, rideshare matching and information about telework. The products and services provide Bellevue companies of all sizes and budgets a way to increase commute options for employees.

Get started by filling out a form ([ChooseYourWayBellevue.org/business-signup](http://ChooseYourWayBellevue.org/business-signup)) to receive a Business Commute Starter Packet.

## City gets first bike signals

When it comes to bicycling in Bellevue, there have been several firsts in recent years:

- Green pavement markings to help make bicyclists safer and more visible;
- Bike lanes that run the length of downtown;
- Those colorful, rentable shared bicycles available across the city!

We can now add one more first to the list — bike signals! Recently, city crews installed the new signals designed specifically for bicycle traffic at Southeast Newport Way and Factoria Boulevard Southeast, near

Newport High School, and at Eastgate Way at 150th Avenue Southeast.

The purpose of the signals is to improve safety by keeping people who bicycle separate from people who drive as they travel through these busy intersections.

At these locations, right-turn arrows for vehicles are red while bike signals are green, and vehicles may not turn right until the bike signal

turns red. The signals are only activated when a bike is present – either by a loop sensor in the pavement or by a rider pushing a button on a post by the curb – so impacts to turning vehicles are limited.





## Boards and Commissions Meetings

All meetings are conducted at City Hall unless otherwise noted. Agendas are subject to change. Agendas can be downloaded from the city's web pages listed below. Meeting alerts are available through subscribing to the City's Special Meeting Notices page. [BellevueWA.gov/city-government/departments/city-clerks-office/special-meeting-notice](http://BellevueWA.gov/city-government/departments/city-clerks-office/special-meeting-notice)

### Bellevue Diversity Advisory Network

(6 p.m., Bellevue City Hall) Last Tuesday of each month [BellevueWA.gov/city-government/departments/city-managers-office/diversity/bellevue-diversity-advisory-network](http://BellevueWA.gov/city-government/departments/city-managers-office/diversity/bellevue-diversity-advisory-network)

**East Bellevue Community Council** (6:30 p.m., Lake Hills Clubhouse, 15230 Lake Hills Blvd) First Tuesday of each month [BellevueWA.gov/city-government/east-bellevue-community-council](http://BellevueWA.gov/city-government/east-bellevue-community-council)

**Arts Commission** (4:30 p.m., 1E-109) First Tuesday of each month [BellevueWA.gov/city-government/departments/community-development/arts-and-culture/arts-commission](http://BellevueWA.gov/city-government/departments/community-development/arts-and-culture/arts-commission)

**Environmental Services Commission** (6:30 p.m., 1E-113) First Thursday of each month [Utilities.BellevueWA.gov/conservation-and-the-environment/environmental-services-commission](http://Utilities.BellevueWA.gov/conservation-and-the-environment/environmental-services-commission)

**Planning Commission** (6:30 p.m., 1E-113) Second and fourth Wednesday of each month [BellevueWA.gov/city-government/departments/community-development/planning-commission](http://BellevueWA.gov/city-government/departments/community-development/planning-commission)

**Transportation Commission** (6:30 p.m., 1E-113) Second Thursday of each month transportation. [BellevueWA.gov/planning/transportation-commission](http://BellevueWA.gov/planning/transportation-commission)

**Human Services Commission** (6 p.m., 1E-113) First and third Tuesday of each month [BellevueWA.gov/city-government/departments/city-clerks-office/boards-and-commissions/human-services-commission](http://BellevueWA.gov/city-government/departments/city-clerks-office/boards-and-commissions/human-services-commission)

**LEOFF 1 Disability Board** (6 p.m., Room 1E-118) First Tuesday of each month [BellevueWA.gov/city-government/departments/human-resources/retirees-former-employees/leoff-1-disability-board](http://BellevueWA.gov/city-government/departments/human-resources/retirees-former-employees/leoff-1-disability-board)

**Library Board** (5p.m., Lake Hills, Bellevue or Newport Way Library) Third Tuesday of each month [BellevueWA.gov/city-government/departments/city-clerks-office/boards-and-commissions/library-board](http://BellevueWA.gov/city-government/departments/city-clerks-office/boards-and-commissions/library-board)

**Parks & Community Services Board** (6 p.m., 1E-113) Second Tuesday of each month [BellevueWA.gov/city-government/departments/city-clerks-office/boards-and-commissions/parks-and-community-services-board](http://BellevueWA.gov/city-government/departments/city-clerks-office/boards-and-commissions/parks-and-community-services-board)

**The Bellevue Network on Aging (BNOA)** 8:30 a.m., North Bellevue Community Center 4063 148th Ave NE, Bellevue) First Thursday of each month [BellevueWA.gov/bnoa](http://BellevueWA.gov/bnoa)

**Special Events Committee** (8:30 a.m., 1E-112) Second Thursday of each month [Parks.BellevueWA.gov/special-events/special-events-committee](http://Parks.BellevueWA.gov/special-events/special-events-committee)

**Youth Link Board** (6 p.m., 1E-120) Second Wednesday of each month [BellevueWA.gov/city-government/departments/city-clerks-office/boards-and-commissions/youth-link-board](http://BellevueWA.gov/city-government/departments/city-clerks-office/boards-and-commissions/youth-link-board)

*Bellevue's Neighborhood Services Division offers a variety of programs and partnerships for neighborhood leaders and active residents. To learn more about citizen involvement opportunities and programs to enhance neighborhoods, please visit our website at: [BellevueWA.gov/city-government/departments/community-development/neighborhoods](http://BellevueWA.gov/city-government/departments/community-development/neighborhoods) or call 425-452-6836 or email: [neighborhoodoutreach@BellevueWA.gov](mailto:neighborhoodoutreach@BellevueWA.gov). To subscribe to this newsletter, visit: [BellevueWA.gov/neighborhood-news](http://BellevueWA.gov/neighborhood-news)*

## City Council [bellevue.legistar.com/Calendar.aspx](http://bellevue.legistar.com/Calendar.aspx)

Day	Scheduled Meeting(s)	Location	Public Comment Opportunity
First and third Mondays except in August and December	6 p.m., Study Session	Council Conference Room	None
	8 p.m., Regular Session	Council Chambers	8 p.m., Oral Communications
Second and fourth Mondays except in August and December	6-10 p.m., Extended Study Session	Council Conference Room	6 p.m., Oral Communications
August – first Monday only	6 p.m., Study Session	Council Conference Room	None
	8 p.m., Regular Session	Council Chambers	8 p.m., Oral Communications
December – first and second Mondays only	6 p.m., Study Session	Council Conference Room	None
	8 p.m., Regular Session	Council Chambers	8 p.m., Oral Communications