

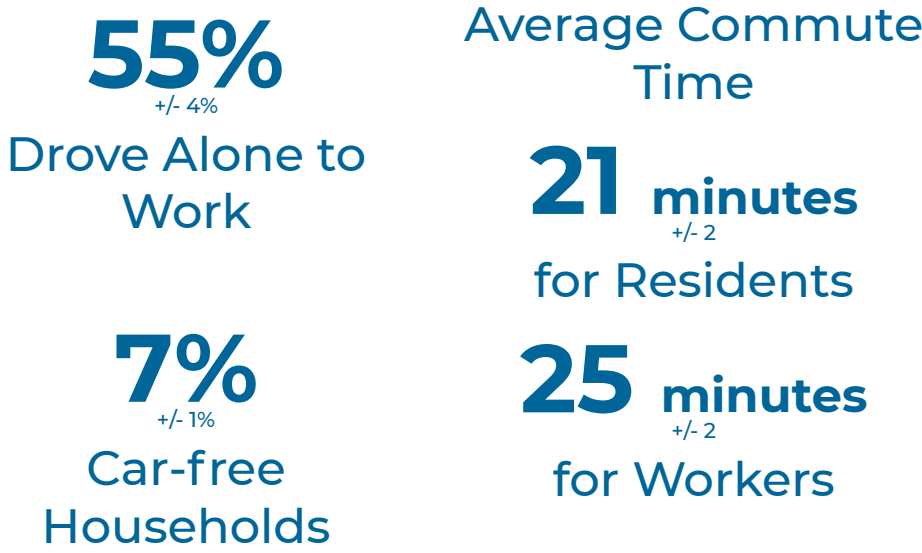


# Transportation and Mobility

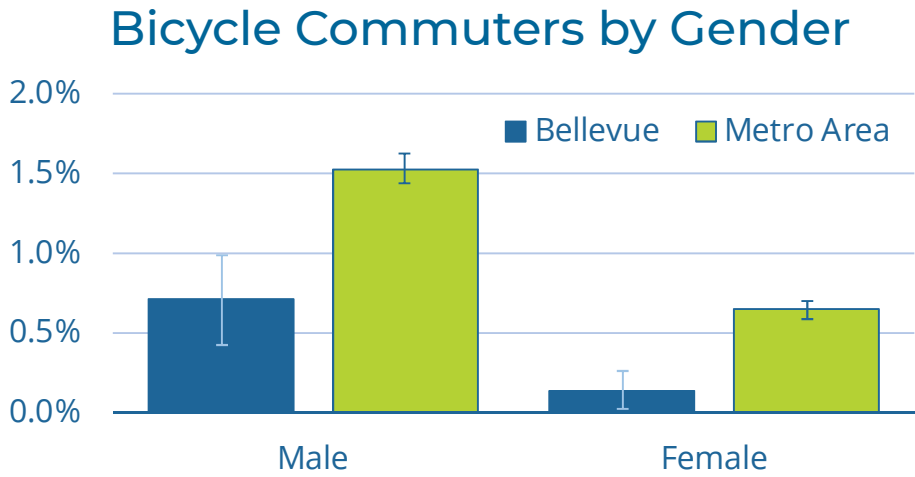
Bellevue is well connected to the rest of the region and its activities via roads and transit.

December 30

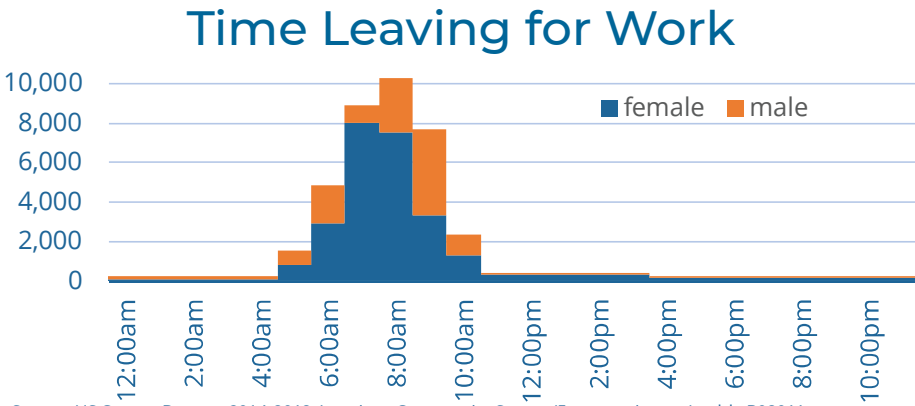
2019



Source: US Census Bureau. 2018 American Community Survey, Tables B08111, B08601, B08536, B08136. 2012-2018 American Community Survey (5-year estimates), table B08201.

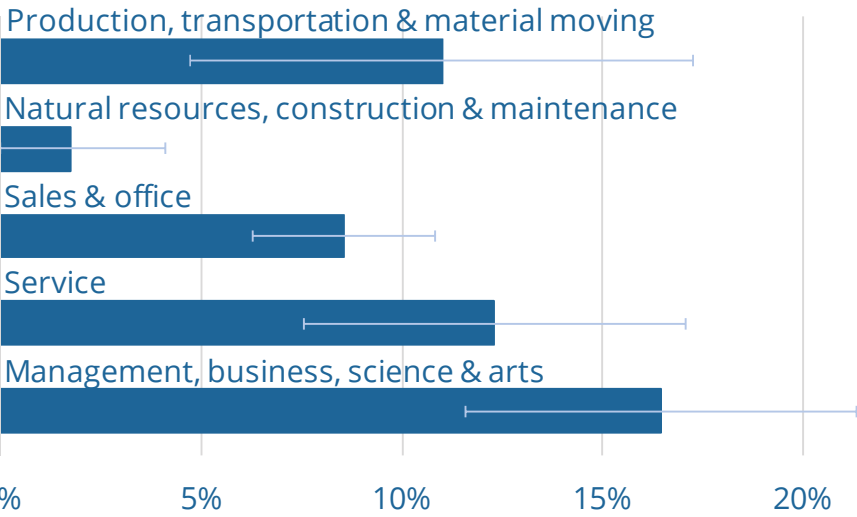


Source: US Census Bureau. 2014-2018 American Community Survey (5-year estimates), table B08006.



Source: US Census Bureau. 2014-2018 American Community Survey (5-year estimates), table B08011.

## Use of Public Transit by Occupation



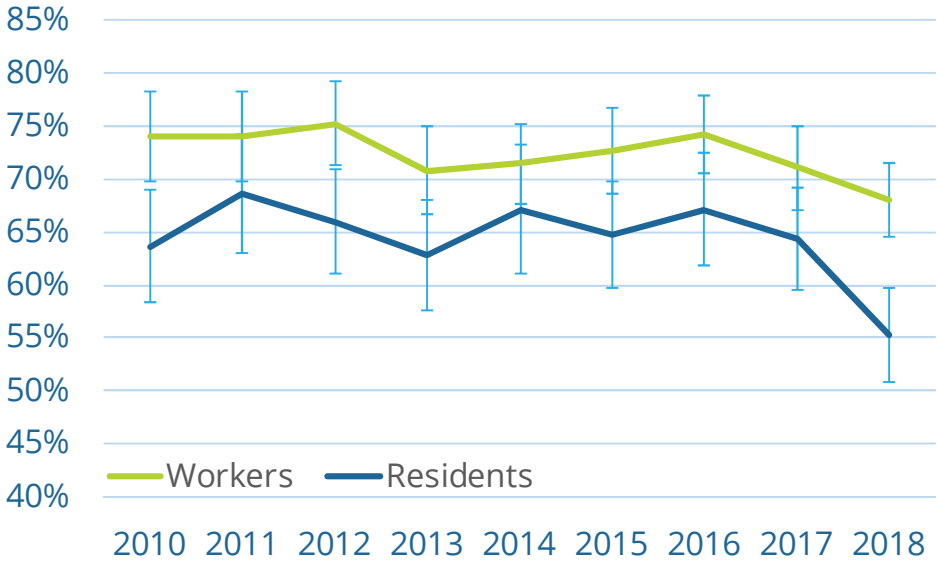
Source: US Census Bureau. 2014-2018 American Community Survey (5-year estimates), tbale B08124.

## Vehicles Available to Households



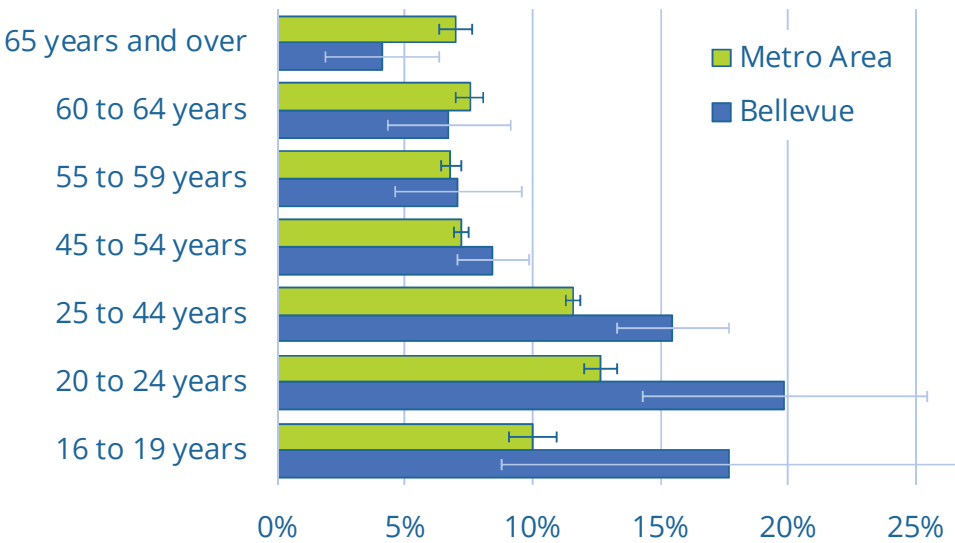
Source: US Census Bureau. 2014-2018 American Community Survey, table B08201.

## Percent of Workers Who Drove Alone to Work



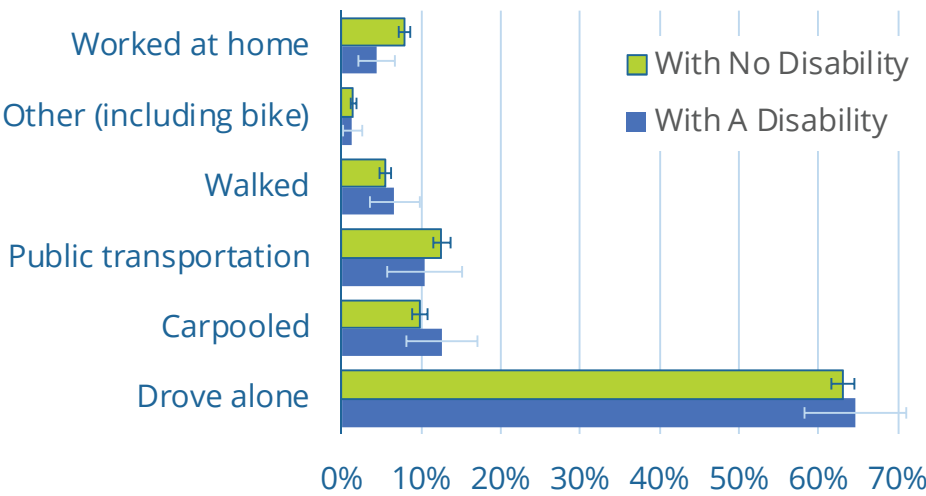
Source: US Census Bureau. 2010-2018. American Community Survey (1-year), tables B08601 and B08111.

## Percent of Workers Who Commute by Public Transit



Source: US Census Bureau. 2014-2018 American Community Survey (5-year estimates), table B08101.

## Commute Mode Choice by Workers With and Without a Disability



Source: US Census Bureau. 2014-2018 American Community Survey (5-year estimates), table S1811.

## Percentage within the Frequent Transit Network



Calculations made by City of Bellevue staff based on King County Assessor's Office. 2019. Parcel Data & Commercial Section Use; US Census Bureau. 2013-2017 American Community Survey (5-year estimates), tables B25024, B25032, and B25033.