

City of Bellevue
ARTS
program

BELLEVUE ARTS COMMISSION



Bellgate by Lee Kelly in 1978.

COMMUNITY DEVELOPMENT DEPARTMENT

**December 3, 2019
REGULAR MEETING**



“The arts are an important expression of how people think of and experience the city and each other. Bellevue seeks to foster a strong arts and cultural community chiefly supported through a wide range of artists, art and cultural institutions, and arts groups offering a variety experiences to an engaged audience.”

-City of Bellevue, Comprehensive Plan, Urban Design & the Arts Element

Agenda

Department of Planning and
Community Development

Agenda

Tuesday, December 3, 2019
Meeting: 4:30 p.m.
Bellevue City Hall, 1E-109

Bellevue Arts Commission

Commission Staff Contact: 425.452.5236

-
1. **CALL TO ORDER** 4:30pm
Chair Manfredi will call the meeting to order.
 2. **APPROVAL OF AGENDA AND MINUTES** 4:30 – 4:35
 - A. Chair Manfredi will ask for approval of the agenda.
 - B. Chair Manfredi will ask for approval of the October 2019 regular meeting minutes.
 3. **ORAL COMMUNICATIONS** 4:35 – 4:40
Chair Manfredi will entertain oral communications limited to three minutes per person or five minutes if representing the official position of a recognized community organization for other than main agenda items and public hearing subject. A maximum of three people are permitted to speak to each side of any one topic.
 4. **ACTION ITEMS AND DISCUSSION ITEMS**
 - A. 2020 Grant Allocations 4:40 – 5:10
 - B. Creative Consultancies Overview & Update 5:10 – 5:30
 - C. Public Art Collection and Maintenance 5:30 – 6:00
 5. **COMMISSION QUICK BUSINESS** 6:00 – 6:05
 6. **REPORTS** 6:05 – 6:10
 - A. Commissioners' Committee and Lead Reports
 - B. Project Updates from Staff
 7. **CORRESPONDENCE, INFORMATION** 6:10 – 6:15
 - A. Written correspondence
 - B. Information
 - i. Committees
 8. **ADJOURNMENT** 6:15pm
Chair Manfredi will adjourn the meeting.

Bellevue Arts Commission meetings are wheelchair accessible. Captioning, American Sign Language (ASL), or language interpreters are available upon request. Please phone at least 48 hours in advance 425-452-6168 (VOICE) for ADA accommodations. If you are deaf or hard of hearing, dial 711 (TR). Assisted listening devices are available upon request. Please contact the Arts Program at least two days in advance smacdonlad@bellevuewa.gov ▪ 425-452-4852 (Voice) ▪ Please dial 711 for assistance for the hearing impaired.

ARTS COMMISSION MEMBERS

Paul Manfredi, Chair
Philip Malkin, Vice Chair
Lydia Aldredge
Ashmita Gulati
Maria Lau Hui
Rebecca Lewis
Carl Wolfteich

COUNCIL LIAISON

John Stokes

STAFF CONTACTS

Scott MacDonald, Arts Program Coordinator, 425-452-4852
Manette Stamm, Arts Program Assistant, 425-452-4064

Department of Planning and
Community Development

Minutes

BELLEVUE ARTS COMMISSION
REGULAR MEETING
MINUTES

November 5, 2019
4:30 p.m.

Bellevue City Hall
Room 1E -109

COMMISSIONERS PRESENT: Commissioners Aldredge, Lewis, Malkin, Wolfteich

COMMISSIONERS ABSENT: Chair Manfredi, Commissioners Gulati, Lau Hui

STAFF PRESENT: Manette Stamm, Gwen Rousseau, Department of Planning and Community Development; Jesse Canedo, Economic Development

OTHERS PRESENT: None

RECORDING SECRETARY: Gerry Lindsay

I. CALL TO ORDER

The meeting was called to order at 4:33 p.m. by Commissioner Malkin who presided. All Commissioners were present with the exception of Chair Manfredi and Commissioners Gulati and Lau Hui, all of whom were excused.

2. APPROVAL OF AGENDA AND MINUTES

A. Approval of Agenda

Motion to approve the agenda was made by Commissioner Lewis. The motion was seconded was by Commissioner Wolfteich and the motion carried unanimously.

B. Approval of Minutes

Motion to approve the October 1, 2019, minutes as submitted was made by Commissioner Lewis. The motion was seconded was by Commissioner Malkin and the motion carried unanimously.

3. ORAL COMMUNICATIONS

Ms. Mary Ellen Hunley, executive director of City Opera Ballet, said she was present just to observe.

4. ACTION ITEMS AND DISCUSSION ITEMS

A. 2020 Census: What, Why and How

Senior Planner Gwen Rousseau reminded the Commissioners that the next decennial census will occur in 2020. She shared a short video about the census and then noted that the census motto is to count everyone once, only once, and in the right place, which is mandated by the US Constitution to be done every ten years to ensure fair representation in the House of Representatives. In addition, the census figures are used to determine how to allocate money through the 55 federal programs that are guided by census data. In 2016, Washington state

received over \$16 billion through the federal programs, averaging about \$2300 per person. Since 2010, Bellevue has received more than \$76 million for transportation projects; \$7.1 million for park projects; and \$5.8 million by way of Community Development Block Grants. The state annually allocates tax dollars collected back to the city based on the population number, which over the last decade totaled about \$40.9 million.

Ms. Rousseau stated that as the city's demographer for the past ten years, she has come to understand the interest in having solid demographic data. The census is important for helping decision-makers make good decisions in equitable ways.

Beginning in mid-March 2020, postcards will be sent out via mail. For the first time, they will invite people to go online to fill out their census questionnaire. Moving to the online format will cost the government far less and there will be less room for error. Ms. Rousseau said the controversy around adding a question about citizenship to the census was resolved by not adding the question, which means some who might otherwise have elected not to fill out the questionnaire will choose to participate. It will, however, be challenging to help people understand how important the census is and that the data are confidential. It is understood that some will face challenges going online to fill out the census, and to address that assistance centers will be set up around the nation in places like libraries, social service agencies and community centers. People will be able to receive online and by phone assistance in 12 different languages. Those who do not respond either online or by phone by early April will receive in the mail another letter that will include a reminder and a paper questionnaire. Census takers will start knocking on doors in May to collect information face-to-face for those who have not responded by then.

Ms. Rousseau said the census questionnaire has questions about age, Hispanic origin, race, relationship to householder, sex, and whether the person is a homeowner or renter. Additionally, there will be operational questions about the number of people living at the address, any additional people staying at the residence, the telephone number of the person filling out the questionnaire, the names of the people living at the address, and whether anyone usually lives or stays somewhere else.

Commissioner Malkin asked why the census would include a question specifically about Hispanic origin. Ms. Rousseau said it has been found that many who are Hispanic or Latino view that as a race, so when they see the racial question, if Hispanic or Latino is not included they will check "other." Hispanic is a protected class and is the largest ethnic group in the United States, so it will be important to get solid data. Each time the census comes around there is talk about changing the racial questions. This time consideration was given to adding another category for Middle Eastern though it was not done.

Ms. Rousseau said the census will face a number of challenges, not the least of which is the move to primarily filling out the questionnaire online, affecting those with low digital skills or who lack access to the internet. There is also an increased level of distrust in government generally, and there is less funding for the census in terms of being able to open assistance centers. Bellevue has a very large number of recent immigrants. Some 24,000 Bellevue residents, which is 17 percent of the city's population, entered in the United States after 2010 and have never participated in the census. Helping them understand what the census is and why it is done will be very important. Bellevue also has a large number of its population who speak a language other than English at home.

Commissioner Malkin asked what will prevent people from outside the United States filling out the census online. Ms. Rousseau said the Census Bureau has spent a lot of resources compiling a master address file. The census is actually based on that file and everyone is associated with it. Bellevue has an address coordinator in the IT department. That person has

been combing through all of their addresses to make sure they have the correct ones. Hacking the system is certainly something people are concerned about. The Census Bureau has been testing the system, including getting people to try hacking in. Because the census is so important to the form of government in the United States, confidentiality and security is given the highest priority.

Commissioner Wolfteich of more concern than someone hacking person files is someone hacking the system to inflate or deflate numbers for their own reasons. Ms. Rousseau said those who work at the Census Bureau are statisticians and they are looking at things very closely and making sure people are counted only once. They are constantly focused on quality control to make sure the numbers are not off. Undercounts of some populations do occur and they are looking at that very closely as well. They send people out to verify addresses as part of their quality control efforts. If something that seems fishy arises, it will be checked out.

Commissioner Aldredge asked how homeless persons are counted and Ms. Rousseau explained that they are counted at the shelters. She allowed that getting an accurate count of the homeless is challenging. Certain groups of populations such as the homeless, people in nursing facilities and students in college dormitories fall into a category called special enumeration. Census workers actually go out before the census period to collection the locations and get counts for those populations.

Ms. Rousseau added that there are predicted mail non-response rate areas identified for the city. Those are areas with concentrations of hard-to-count populations. The locations are mainly places where there are a lot of renters, people who have lower incomes, and people who do not speak English very well.

The city's strategy has three prongs: publications, people and places. In terms of publications, the focus will be on making sure every way of getting the word out is utilized to the fullest. The people strategy focuses on the city's frontline staff, including all of the boards and commissions and all partner organizations. The places strategy will involve making sure every city facility has a census presence. There has been a lot of collaboration between local jurisdictions to make sure any gaps left by the federal government are addressed. Bellevue has contributed \$50,000 to the regional census fund. Seattle and King County have contributed \$250,000 each to the fund, and the Seattle Foundation contributed \$500,000. Redmond and Kirkland have contributed \$20,000 and \$30,000 respectively. Funds have also been received from philanthropists. In all, the dollars will be used to fund community based organizations that are in touch with harder-to-count populations. Eastside Refugee and Immigrant Coalition is one of those organizations.

Ms. Rousseau said everyone can help the process by becoming more informed and sharing information with others. The census website has been designed to be accessible and user friendly. Local residents will be hired to help with the census.

Commissioner Malkin asked if the census will be hiring homeless persons. Ms. Rousseau said they are willing to hire any viable candidates. Commissioner Aldredge suggested those hired would need to be reliable and persons residents will open their doors to.

Answering a question asked by Commissioner Wolfteich, Ms. Rousseau said the \$16 billion in federal funds that flowed to the state of Washington in 2016 alone took several forms. Some of it went to individuals via Medicaid and Medicare. Another large segment of the dollars were in the form of highway transportation funds.

B. Grant Program Update

Planner Manette Stamm announced that she has been put in charge of a large portion of the arts program. With regard to the grant program, she noted that 46 applicants had applied for the 2020 cycle. The applications are online, which has proved to be a difficult transition for some but the kinks are being worked out in conjunction with the consultant. Help is offered in different languages as well.

Commissioner Malkin said he has filled out the application both on paper and online and found the scoring mechanism online to be much better. It certainly is more consistent and easier to track. Commissioner Wolfteich concurred and stated that the version of the online application for 2020 is certainly an improvement over the 2019 version. Commissioner Malkin said he would prefer to see separate applications for each type of grant.

Ms. Stamm said three Commissioners are chosen to participate in the review process annually along with two outside artists. The consultants provide process training and the panel then has about three weeks to review all of the applications, discuss and score them. Selection of the two outside artists largely depends on who responds to emails that are sent out. The outside reviewers are compensated for their time.

Commissioner Malkin said he was concerned about the fact that neither of the outside artists chosen for the 2020 cycle live in Bellevue. He said he had no doubt that they have the qualifications needed to serve on the panel.

Ms. Stamm said the schedule calls for presentation of the grant recommendations to the City Council on December 9 for review and approval. Once approved, the grantees have a week or so to accept their grants. A post-grant report will be required to be submitted by late November 2020.

Ms. Stamm stressed that the requested dollar amounts far exceed the available allocation dollars. In part that is because the pool of applicants continues to increase each year and because the dollars available for allocation have not increased. Commissioner Malkin pointed out that the allocation amount has not increased for close to 20 years. Jess Canedo with Economic Development noted that the city will adopt a new budget in 2020. Commissioner Malkin said the budget funding requests put forward by the Commission have traditionally been pushed to the bottom of the list and it has always been thanks to the Council alone that the arts program has been funded at all. Mr. Canedo said the staff will be getting updates on the next budget process in December. He said he would keep the Commission informed.

Commissioner Malkin asked when the final report on the Cultural Compass survey being done by the consultant will be received. Ms. Stamm said the work was put on hold and will remain on hold until the position vacated by Mr. Heim is filled. That likely will not occur until the first quarter of 2020.

Commissioner Lewis observed that in past years the Commissioners had been given tickets to attend programs funded in part with grant dollars. She said it was a good way to be aware of what was being offered. The Commissioners who attended programs were asked to write up a review.

5. COMMISSION QUICK BUSINESS – None

6. REPORTS

A. Commissioners' Committee and Lead Reports – As Noted

B. Project Updates from Staff

Ms. Stamm reported that the Power Up program has a cohort that meets periodically throughout the year. They have a final meeting scheduled for November to close things out. She said she hoped to do a survey to determine what worked and what did not work in order to improve the program for next year. She stressed that the Power Up program is not fully budgeted for next year.

Ms. Stamm said she was currently working with the artist on the fabrication contract for the Downtown Park public art project. Mr. Canedo said once the contract is developed it will be handled by staff and will not be coming back before the Commission for review. Ms. Stamm said a maintenance plan and schedule will be included in the scope.

Commissioner Aldredge said she saw some basic design problems in the work that will lead to maintenance problems. Maintenance budgets rarely increase as collections constantly increase. She said she had been told that the concerns would be handled at the contract phase. Simply saying the issues will be addressed through the city's maintenance contract will not be enough. Mr. Canedo said maintenance is always a concern and that there is a need to make sure there is sufficient budget to do the required work. Commissioner Aldredge pointed out that the works done by the artist have for the most part tended to be located in dry and sunny climates. There is nothing in the design that addresses Bellevue's very different climate.

7. CORRESPONDENCE, INFORMATION

A. Written Correspondence – As Noted

B. Information

i. Committees – As Noted

8. ADJOURNMENT

Commissioner Malkin adjourned the meeting at 5:40 p.m.

Department of Planning and
Community Development

Action & Discussion

Action and Discussion

Tuesday, December 3, 2019
Meeting: 4:30 pm

Bellevue Arts Commission
Action and Discussion

2020 Grant Allocations

City Staff with support from the Allocations committee will present its funding recommendations for the 2020 Eastside Arts Partnerships, Special Projects, and Power UP Bellevue funding programs. The Commission will be asked to endorse these recommendations, and a Commission representative will bring these endorsements to Council for its review and approval on December 9, 2019.

Motion: A motion to endorse the Allocations Committee's 2020 funding recommendations for Eastside Arts Partnerships, Special Projects, and Power Up as presented for City Council for approval.

ALLOCATIONS COMMITTEE REVIEW PANEL

Philip Malkin, Bellevue Arts Commission, Allocations Committee Chair

Ashmita Gulati, Bellevue Arts Commission

Carl Wolfeich, Bellevue Arts Commission

Janell Johnson, Associate Development Director – Endowment & Planned Giving, Village Theatre

Jono Vaughan, Artist and Professor at Bellevue College

GRANT APPLICATION AND ALLOCATION PROCESS

Since 2001, the City Council has allocated annual grant funding generated by the general fund to support artists and arts organizations that provide arts, cultural, and heritage programs and services in Bellevue through three programs: Eastside Arts Partnerships, Special Projects, and Power Up Bellevue.

Recommendations are developed through an in-depth application process administered by the Arts Program and evaluated by an Allocations Committee appointed by the Arts Commission. The Committee considers the quality of the creative engagement, the public benefits generated for Bellevue residents and visitors, and the organizational capacity and sustainability of the applicants.

2020 FUNDING RECOMMENDATIONS

The Arts Commission has accepted the Allocation Committee's recommendation that a total of \$145,000 be allocated to 41 individuals and nonprofit organizations at their meeting on December 3, 2019:

- \$120,000 allocated to 32 nonprofit organizations in Eastside Arts Partnerships.
- \$10,000 allocated to four individuals and five nonprofit organizations in Special Projects.
- \$15,000 to three organizations in Power Up Bellevue, supported by 4Cutlure Sustained Support Grant

A list of each recommended allocation and a brief grant description is attached at the end of this action item.

2020 EASTSIDE ARTS PARTNERSHIPS ALLOCATIONS

Program goals

Eastside Arts Partnerships provides operating support to nonprofit organizations providing annual arts, cultural and heritage programs in Bellevue. The City provides annual support for organizations and individuals bringing arts to the community, recognizing the value the arts bring to our quality of life, the education and development of our children, the vitality of our businesses, and our sense of connectedness to the community. EAP encourages: programming quality and sustainability; arts access for Bellevue residents; artistic, managerial and fiscal excellence, and greater cooperation and collaboration among arts groups.

Process and criteria for evaluation

Panelists separately reviewed and scored the applications on how well they demonstrated the stated criteria on a scale of 1-10. The scale consists of six qualities in ascending order from no achievement to most achievement: not competitive (1); fair (2-3); good (4-5); great (6-7); excellent (8-9); exceptional (10). Panelists provided scores for the following criteria:

1. Creative Engagement

- Quality and effectiveness of the organization's existing and proposed arts, cultural, and heritage programming and services to meet the cultural needs of an audience and/or constituent group.
- Extent of creative and civic participation by Bellevue's diverse residents and visitors.
- Meaningful creative and civic opportunities for working artists, cultural workers and volunteers.
- Diversifies the forms of art, creative experiences and cultural resources available to Bellevue residents and visitors.

2. Public Access and Benefit for Bellevue Residents and Visitors

- Quality and extent of public benefits offered to Bellevue residents and visitors.
- Significant access to cultural opportunities to under-served groups, or, demonstrates improved access by underserved people and communities over time.
- Marketing strategies and reach are appropriate to target audience(s) and attendance.
- Effort and evidence of inclusive communications to new and/or underserved people and communities, particularly those who speak a language other than English at home.

3. Organizational Capacity and Sustainability

- Demonstrated financial capacity and stability.
- Evidence of community support, which may include, but is not limited to, in-kind or cash donations from individuals, foundations, corporations, or other government sources.
- Strength of organizational governance.

Then, the panelists' scores were averaged into single score for each applicant that determined their rank order. These scores were used to determine an allocation, based on rank and available funds for each type of grant. For EAP grants, applicants that scored higher received a larger percentage of funding based on their asking amount. For example, SIFF scored 9.48 from an average of the Allocations Committee's scores, and was awarded \$8,000, 80% of their request of \$10,000. 91.3 KBCS Bellevue College, for contrast, scored 7.7 and was awarded \$5,000, 50% of their request of \$10,000.

Recommended 2020 Allocations for Community Partners (awards up to \$5,000)

ORGANIZATION	GRANT PURPOSE	REQUEST Operating Budget (2020 estimate)	2020 GRANT ALLOCATION % of Request
Lake Washington Symphony Orchestra	For five children's educational programs that enhance musical exposure to children whose schools typically do not provide a musical program.	\$5,000 \$70,000 7% of OpB	\$2,475 49%
StoneDance Productions/CHOP SHOP: Bodies of Work (Fiscal Sponsor: Shunpike)	For a contemporary dance festival promoting work accessible to a diverse audience, offering free and open to all ages and abilities dance classes, providing a platform for dance artists, and contributing to Bellevue's cultural richness.	\$5,000 \$32,400 15% of OpB	\$2,450 49%
The Sustain Music Project ↑	For two chamber concerts in Bellevue - one featuring music with lighting effects, one telling the story of Eastside Academy, for free tickets for people with little access to arts, and for two community outreach concerts.	\$5,000 \$15,720 32% of OpB	\$2,400 48%
Bellevue Community Band	For sponsoring a music composition competition among area middle school and high school students, in coordination with local music businesses, to promote excellence in music education beyond the classroom experience.	\$5,000 \$12,300 41% of OpB	\$2,390 48%
Bellevue Chamber Chorus	For support in part for a thematic concert with student and professional guest artists featuring American and International composers' songs of hospitality, belonging, love, unity, and hope with free and discounted tickets for low income.	\$2,500 \$44,444 6% of OpB	\$1,170 47%
Orquesta Northwest* ↑	For Ballard Civic Orchestra/World Youth Orchestra performances, featuring Latinx guest artists and composers, at diverse Bellevue venues to celebrate Latino traditions, promote cultural pride, and increase civic engagement in Bellevue by underrepresented Latinx community members.	\$5,000 \$93,000 5% of OpB	\$1,900 38%
Asunaro d.b.a. Japan Fair	For promoting and cultivating both traditional and modern Japanese Culture in Greater King County through exhibits, workshops, vendors, and community organizations at Bellevue's Meydenbauer Center and opened free to public.	\$5,000 \$84,685 6% of OpB	\$1,700 34%
Evergreen Association of Fine Arts	For rental costs to hold 9 monthly meetings and pay guest artist fees, all free and open to the public. Proceeds from our December meeting rummage sale go directly to a selected local arts program.	\$5,000 \$13,600 37% of OpB	\$1,700 34%
Barvinok Ukrainian Dance Ensemble	For offering residents a discount and to perform at numerous Bellevue festivals and private events for free as a show of support to our beloved community.	\$5,000 \$18,000 28% of OpB	\$1,650 33%
Theatre33	For comfortable padded chairs and storage cart and Matlay dance floor to allow greater flexibility in production. We welcome seniors by providing discounted tickets, however we get regular complaints about our uncomfortable plastic chairs.	\$3,000 \$100,103 3% of OpB	\$1,000 33%
Performing Arts Festival of the Eastside	For a music festival consisting of 4 1/2 days of adjudication and 5 public concerts at St. Andrew's Lutheran Church from April 14 - 26, 2020 for students in piano, strings, woodwinds and voice.	\$2,000 \$32,330 6% of OpB	\$580 29%
Seattle Chinese Chorus	For a concert open to public scheduled on May 16, 2020 at city of Bellevue.	\$5,000 \$21,350 23% of OpB	\$1,250 25%
India Association of Western Washington	For providing opportunities for Bellevue residents regardless of age, ethnicity, gender, and socio-economics to explore the world of creative mindfulness through workshops on meditative art for all, preschool art and art marketplace.	\$5,000 \$650,000 0.8% of OpB	\$1,100 22%
Seattle-Tashkent Sister City Association ↑	For our 22nd annual Navruz celebration on Saturday, March 21, 2020, at the Vasa Park Ballroom in Bellevue. The event will be full of fun with delicious Central Asian food and entertainment.	\$3,000 \$13,000 23% of OpB	\$500 17%
Brass Band Northwest*	For a series of four concerts. One concert will focus on stewardship of the natural environment including partnerships with environmental groups based in Bellevue and Tacoma Ocean Fest.	\$3,000 \$19,870 15% of OpB	\$0 Not Eligible

* New EAP Applicant ↑ Power Up Applicant

Recommended 2020 Allocations for Pro Partners (awards up to \$10,000)

Seattle International Film Festival (SIFF)	For the opportunity to provide the Bellevue community with 20 eye-opening & diverse films over six days, May 15-20, 2020. We would also facilitate the visit of filmmakers to attend Q&A sessions and school visits.	\$10,000 \$6,457,162 0.2% of OpB	\$8,000 80%
Bellevue Arts Museum	For continued access to visual culture for over 44,000 individuals, families, and young adults who benefit from Bellevue Arts Museum's regular and free admission programs and public forum.	\$10,000 \$3,039,300 0.3% of OpB	\$7,800 78%
Wintergrass Music Festival	For an annual four-day indoor acoustic music festival at the Hyatt Regency Bellevue that offers an enriching experience of live performances, music education and volunteerism for all at affordable prices including full student scholarships.	\$10,000 \$562,861 2% of OpB	\$7,800 78%
Pacific Northwest Ballet	For school-year and summer dance education, free-of-charge to 400± Bellevue School District students in schools serving low-income, culturally/ethnically diverse communities and those experiencing homelessness, and benefiting 1,050± youth at PNB's Eastside School (scholarships offered).	\$7,500 \$26,035,419 0.03% of OpB	\$5,760 77%
Village Theatre	For Village Theatre's Pied Piper Educational Program, serving 7,380 Eastside students (about 6,708 Bellevue residents) in grades K-8 with professional touring theatre productions and in-school workshops.	\$10,000 \$14,281,801 0.07% of OpB	\$7,615 76%
Music Works Northwest	For community outreach events, including free concerts and free Instrument Discovery Days, increasing access to music experiences to low income families, persons on fixed incomes, seniors, youth and special needs populations.	\$10,000 \$1,131,825 0.9% of OpB	\$7,600 76%
KidsQuest Children's Museum	For 2020 arts programming onsite at KidsQuest Children's Museum and throughout the community.	\$10,000 \$3,142,000 0.3% of OpB	\$6,660 67%
Bellevue Downtown Association	For a NEW outdoor evening summer concert series, Bellevue Downtown Live after 5pm. Starting July 7, eight free concerts happen Wednesday evenings. Concerts are free, all ages, all music genres to encourage community and conversation.	\$10,000 \$2,205,890 0.5% of OpB	\$6,500 65%
Bellevue Youth Symphony Orchestra	For a season of 15 orchestra performances, which enhance the lives of student musicians by providing dynamic musical experience, foster collaboration, confidence, and personal responsibility through the pursuit of artistic excellence.	\$8,000 \$651,241 1% of OpB	\$5,100 64%
Emerald Ballet Theatre	For support of the 2019-2020 season of 7 dance performances accompanied by live orchestra, Bounding Boys scholarship program, Teaching Institute, and Magic Bus community outreach program.	\$10,000 \$170,000 6% of OpB	\$5,100 51%
Bellevue College 91.3 KBCS ↑	For diverse music programming featuring both live and recorded local artists, which will be available free to the public via broadcast and the KBCS website for their enjoyment and learning.	\$10,000 \$1,050,168 1% of OpB	\$5,000 50%
The Global Organization for Arts and Leadership (GOAL) ↑	For GOAL's performing arts and leadership training programs (LEAP Academy/Summer Intensive Performing Arts Leadership Camp) with inclusive community productions/presentations with offered reduced tuition and free tickets for the community senior citizens and low-income families, scholarships.	\$10,000 \$246,100 4% of OpB	\$5,000 50%
Evergreen City Ballet	For performances of ECB's perennially popular Nutcracker, to be performed at the Meydenbauer in December 2020 (days tbd), including photo opportunities for young patrons, a bilingual Q&A presentation, and reduced ticket options.	\$6,000 \$608,991 1% of OpB	\$2,900 48%
Tasveer	For a series thought-provoking South Asian Film screenings and dialog series, that will conclude with the 15th annual Tasveer South Asian Film Festival.	\$10,000 \$350,000 3% of OpB	\$3,800 38%
American Asian Performing Arts Theatre ↑	For Chinese Lunar New Year celebration in 2020 at Meydenbauer center. The show will include numerous local world-renowned artists and organizations. The celebration will enrich the Bellevue community by sharing our rich culture.	\$10,000 \$380,000 3% of OpB	\$3,750 37%
Eastside Heritage Center	For the preservation, acquisition, and interpretation of historical Bellevue communities, through documents, artifacts, and stories to be shared with the public both digitally and via exhibits, programs, and events for little to no cost.	\$10,000 \$149,137 7% of OpB	\$3,600 36%
One Reel*	For an event that enables neighborhoods to showcase Bellevue art and artists, generate public camaraderie with neighbors and bring communities together for free outdoor musical performance.	\$10,000 \$74,111 13% of OpB	\$3,300 33%
Pacific Ukrainian Society ↑	For 2020 NW Ukrainian International Festival (largest Ukrainian cultural/art event of the West Coast). Event is free for all with art masterclasses, dance performance, ethnic fashion show, ethnic singers, complimentary kids' area.	\$10,000 \$70,000 14% of OpB	\$2,450 24%
EAP TOTAL:		\$235,000 Requested	\$120,000 Awarded

2020 POWER UP GRANT ALLOCATIONS

Program Goals

Power Up Bellevue helps leaders of arts and cultural nonprofits reach the next level of organizational development. Rooted in Bellevue's unique cultural landscape and community assets, the program provides project funding, a learning community, and technical assistance to existing and recent Eastside Arts Partners. The goals are to strengthen our partners' ability to fulfill their mission and increase the capacity of organizations to serve Bellevue residents and visitors.

Process and criteria for evaluation

Panelists reviewed the proposals and recommended funding based on the following criteria:

- Readiness to engage in capacity building as determined in the *Five Elements Self-Assessment*.
- Clearly articulated capacity building need and a feasible project or proposal to address it.
- Commitment to capacity building.

The three Power UP grants were chosen based on the strength of the applicant's application and alignment with the purpose and goals of the Power UP grant. The award decision was also balanced with the applicant's overall score from an Organizational Self-Assessment offered by 501 Commons, a nonprofit support organization.

Recommended 2020 Allocations for Power Up Bellevue

ORGANIZATION	GRANT PURPOSE	IMPACT	2020 GRANT ALLOCATION Project Budget
Bellevue College 91.3 KBCS	For diverse music programming featuring both live and recorded local artists, which will be available free to the public via broadcast and the KBCS website for their enjoyment and learning.	Volunteer DJs are a fundamental part of the station's music programming block, and they help cultivate the station's identity, especially its connection to the local Bellevue community. With a training manager assisting with the necessary work of training new volunteer DJs, and helping refresh KBCS's training infrastructure, the station will be better positioned to continue and expand its volunteer DJ onboarding in the future.	\$5,000 \$5,000
The Global Organization for Arts and Leadership (GOAL)	For hiring a grant writer as a capacity-building prospect to apply for appropriate foundation grants.	A year from now with the assistance of the POWER-UP Grant, GOAL will have a measurable professional grant writing process and schedule in place.	\$5,000 \$5,000
Orquesta Northwest	For Ballard Civic Orchestra/World Youth Orchestra performances, featuring Latinx guest artists and composers, at diverse Bellevue venues to celebrate Latino traditions, promote cultural pride, and increase civic engagement in Bellevue by underrepresented Latinx community members.	As our organization moves into the future, the learning derived from the Power Up cohort meetings and other educational and consultant sources that have strengthened our infrastructure and built our capacity will help to improve our effectiveness and efficiency and to expand fundraising as the number of volunteers, participants, supporters, and new projects continues to increase.	\$5,000 \$14,800
The Sustain Music Project	For two chamber concerts in Bellevue - one featuring music with lighting effects, one telling the story of Eastside Academy, for free tickets for people with little access to arts, and for two community outreach concerts.	A POWER UP grant will allow us to hone our message to garner community engagement and involvement, vital to our growth as an organization. It will allow us to develop new skills that will raise our potential revenue, resulting in more concerts, more partnerships with other nonprofits and artists in the northwest, and more audience members.	\$0 \$5,000
Pacific Ukrainian Society	For 2020 NW Ukrainian International Festival (largest Ukrainian cultural/art event of the West Coast). Event is free for all with art masterclasses, dance performance, ethnic fashion show, ethnic singers, complimentary kids area.	This grant will help jump start the administrator's ability to focus on project planning and to increase number of cultural events happening in Bellevue. Support more people of culture of Ukrainian heritage and help them realize their talents. Spend more time on finding grant programs and sponsors to be able to grow Ukrainian Cultural programs in Bellevue and to eventually help to open a Ukrainian cultural center in Bellevue.	\$0 \$12,750
Seattle-Tashkent Sister City Association	For our 22nd annual Navruz celebration on Saturday, March 21, 2020, at the Vasa Park Ballroom in Bellevue. The event will be full of fun with delicious Central Asian food and entertainment.	A big majority of people we serve live in Bellevue area, with POWER UP we'll have the opportunity to strengthen our ties with them and even involve more.	\$0 \$7,700
American Asian Performing Arts Theatre	For Chinese Lunar New Year celebration in 2020 at Meydenbauer center. The show will include numerous local world-renowned artists and organizations. The celebration will enrich the Bellevue community by sharing our rich culture.	To support artists, creative workers, or cultural practitioners with subsidized (no or reduced fee) professional development opportunities or services.	\$0 \$87,200
Power Up TOTAL:		\$35,000 (\$5,000 each) Requested	\$15,000 Awarded

2020 SPECIAL PROJECTS GRANT ALLOCATIONS

Program Goals

Special Projects fosters creativity and innovation in the arts and access to art, culture and heritage by new and under-served people and communities. Project funding encourages innovative projects by artists and communities that fill in cultural gaps and inspire new forms of creative participation, particularly for under-served groups.

Process and criteria for evaluation

Panelists separately reviewed and scored the applications on how well they demonstrated the stated criteria on a scale of 1-10. The scale consists of six qualities in ascending order from no achievement to most achievement: not competitive (1); fair (2-3); good (4-5); great (6-7); excellent (8-9); exceptional (10). Panelists provided scores for the following criteria:

1. Artistic Innovation

- Quality and promise of the proposed arts, cultural, and heritage project to meet the cultural needs of an audience and/or constituent group.
- Innovative approach to foster creative and civic participation by Bellevue's diverse residents and visitors, particularly underserved people and communities.
- Fills a gap in art, cultural, or heritage offerings and opportunities not regularly available to Bellevue residents and visitors.

2. Public Access and Benefit for Bellevue Residents and Visitors

- Quality and extent of public benefits offered to Bellevue residents and visitors.
- One or more compelling, feasible public events in Bellevue is clearly described.
- Marketing strategies and reach are appropriate to target audience(s) and attendance.

3. Project Feasibility

- Demonstrated experience of project leaders to accomplish the scope and scale of the project.
- Evidence of thoughtful planning including clearly articulated goals and process for evaluation.
- Realistic budget and timeline.

For Special Project grants, applicants that scored higher received a larger percentage of funding based on their asking amount, similarity to EAP grants.

Recommended 2020 New and Renewal Special Projects Grant Allocations

ARTIST OR ORGANIZATION	ARTISTIC SERVICES & PUBLIC BENEFIT	REQUEST Project Budget % of project budget	2020 GRANT ALLOCATION % of Request
Seattle Young Philharmonic (Renewal)	For a Chinese New Year Concert by SYP on January 26th featuring music from China, Taiwan, Korea, Southeast Asia, and Western festive music to celebrate with the community with free/discount tickets to underserved groups.	\$2,500 \$16,970 15%	\$1,100 44%
Paulina Chalita-White*	For Special Needs Dancers! Teachers and students will get to take a workshop with Flamenco Star (And Ph.D. in Special Education) Jose Galan. And see his show with Lola Flores (Performing on a wheelchair)	\$2,800 \$7,000 40%	\$1,180 42%
ASKXXI Artist Team: Genevieve Tremblay and Nathan DiPietro*	For (1-2 week) VR Artists-in-Residency to create immersive Bellevue Virtual Garden (Tiltbrush) inspired by species at Bellevue Botanical Gardens & tBUG + invite garden volunteers, wider community to participate, co-create & share via multiple platforms.	\$5,000 \$7,180 70%	\$1,600 32%
Kai Chen	For a concert featuring movie/opera music by cellist Kai Chen, violinist Yuan Fang, Pianist Andrew Young, and Seattle Young Philharmonic with free/discount tickets offer to the underserved community or specific groups in King County.	\$3,000 \$29,645 10%	\$950 32%
Sammamish Symphony Orchestra (Renewal)	For 6 symphonic performances for the citizens of Bellevue. The concerts benefit Bellevue citizens by providing education, training, program expansion to improve orchestral and symphonic exposure for musical listeners.	\$5,000 \$5,000 100%	\$1,540 31%
Kennard Holley (Renewal)	For fostering inclusion by offering an arts or heritage project, program, or service designed specifically for a historically underrepresented group.	\$6,000 \$125,341 5%	\$1,780 30%
Japan Creative Arts	For two days free intensive workshop for teachers of Elementary school with Japanese Taiko artist Ringtaro Tateishi for learning how to study Taiko drumming to promote global mutual understanding for K-5 grades, because of Olympic year.	\$3,000 \$26,700 11%	\$650 22%
Ya-Li Lee*	For a concert to present the Art songs by a Taiwanese composer, Dr. Wei-Bin Chen, who has devoted his music creation to restore the once-banned Taiwanese dialect, his Mother Tongue, back to Taiwanese society.	\$3,000 \$15,645 19%	\$600 20%
The Huayin Performing Arts Group	For a series of free workshops and a grant performance in Meydenbauer Center to introduce Chinese arts to our community, especially youth and seniors who would not normally have the opportunity to participate.	\$3,000 \$8,500 35%	\$600 20%
Amy Fredericks	For a public event whereby drawing and painting are used to communicate as park-goers respond and reflect on a perspective from three Bellevue members whose limitations hinder participation to events outside the house.	\$2,502 \$2,502 100%	\$0 0%
Dabuli	For free "Nepal Festival" event showcasing Nepalese arts, music, dance, food, and various cultural activities for people of all ages and abilities to educate, engage and inspire the community to foster intercultural understanding and appreciation.	\$2,500 \$4,000 63%	\$0 0%
Joydeep Hazra	For the use of Bellevue Youth Theater to bring Filmmakers, artists to teach the youth of Bellevue how to put their thoughts in a script, make short films and express themselves artistically.	\$10,000 \$10,000 100%	\$0 0%
Sakiko Flower	Takarazuka Revue came to perform three times before in the Seattle area in 1939, 1959, and 2017, but never have come to Bellevue. This is a great opportunity to showcase our performance in Bellevue.	\$3,000 \$19,100 16%	\$0 0%
* New EAP Applicant			
Special Projects TOTAL:		\$51,302 Requested	\$10,000 Awarded

Action and Discussion

Tuesday, December 3, 2019
Meeting: 4:30 pm

Bellevue Arts Commission
Action and Discussion

Creative Consultancies Overview & Update

Staff will present an update on a possible future project focused on capacity building in the BelRed Art District. See following page for the application submitted for 4Culture's Creative Consultancies.

OVERVIEW

In the late summer and fall this year, the Arts and Economic Development Staff worked collaboratively on an application to 4Culture's Creative Consultancies. Now in its second year, Creative Consultancies provides funding to cities in King County that receive Sustained Support from 4Culture. Cities submit initial project ideas that consultants can choose to express interest in. Once these interests are collected, 4Culture notifies cities of potential consultants along with their bios and work examples. Cities review these consultants to choose a maximum of five to interview. After interviews, the cities and consultants submit their top three choices and a city and consultant will be matched to develop a scope together. Scopes are submitted to 4Culture at the end of January 2020, and then a committee will review them and make recommendations for funding, similar to Bellevue's grant program. Projects will kick off in March of 2020, and depending on the recommendations made by 4Culture's review committee, cities can expect an average of \$10,000 for the project. It is recommended that cities match the grant and keep in mind that there is a possibility that the project could carry into 2021, as 4Culture saw many applications this year continue work from the project's first year in 2019.

UPDATE

Last year, the City of Bellevue applied for a project with the King County Library's ideaX Makerspace in the Bellevue location, however, the project was not awarded funding. We gave the program another try this year with the BelRed Art District. Over the past few months, Staff have been reviewing possible consultants and interviewing our top five. We submitted our top three in early November and have been matched with our top candidate, Katie Miller.

It is important to note that the city is still in the developing and scoping phase with Katie Miller and that this project **has yet to be funded** by 4Culture. If the project is awarded funding, it is likely that the City of Bellevue will match this grant, as work in the BelRed Art District is a top priority in the coming years. Staff believe that this opportunity is perfect for BelRed as it demonstrates a commitment to furthering work on the Art District and provides an outlet for building capacity among businesses and organizations in BelRed.

DISCUSSION

Staff are open to Commissioners' feedback on the arts district concept and recommendations on work scopes or approaches that would help implement the concept.

A possible timeline of involvement for this project is as follows:

December 2019: Idea generation for possible scoping items

Late Spring 2020: Meet consultant and/or presentation on the final scope

Throughout 2020: Updates as needed

End of 2020: Consultant presentation on work and findings

CREATIVE CONSULTANCIES

City of Bellevue

District 6

The City of Bellevue seeks a creative consultant to facilitate collective action and capacity building within a neighborhood of artists, creatives, and knowledge workers in BelRed, a designated arts district in Bellevue.

Project Description

BelRed sits strategically at the intersection of I-405 and WA-520 – and benefits from the immediate access to the Eastside’s three core cities – Bellevue, Kirkland, and Redmond. The area was originally developed in the post-war era as a prime location for light industrial uses, warehouse spaces, and car repair facilities to service the Eastside’s growing population. As the area evolved with the rise of the information economy, many artists and creative firms found a home in the neighborhood’s emptying warehouse spaces. As a reflection of the area’s changing uses, and the need for more creative spaces, the city reimaged the neighborhood from a light industrial area into Bellevue’s innovation and arts district. A 2009 plan set a vision for a vibrant, mixed-use and transit-oriented neighborhood with a distinctive character based on arts and culture. The plan also calls for an arts district as a policy objective. The adopted policy and land use framework placed the City at the forefront of creating an arts district, but progress has been slow. In the ten years since adopting the BelRed Plan, the City has secured the construction of two light-rail stations at the heart of the community, but the idea of the arts district has only remained an idea. Now, the City wants to accelerate the pace of creative change and empower the community and other stakeholders to advance the arts district concept through partnership and collective action.

Anchored by the Global Innovation Exchange (GIX) and the Pacific Northwest Ballet, and running parallel to future light rail, this former industrial district boasts more than 100 cultural resources. Most of these are practice space for dance and music, as well as small creative businesses offering musical instruments, art supplies, portraiture, architectural and interior design, and education in the arts. Recent development has welcomed to the neighborhood REI’s new headquarters, a major Facebook presence, GIX—an innovative technology-oriented partnership between UW and Tsinghua University of Beijing. This new development begs the question: How can BelRed’s creative community persist in the face of change and adapt to redevelopment? Additionally, while the neighborhood is currently home to 5,000 residents and 30,500 workers, it is projected to support a residential population of 10,000 and 44,000 workers by 2040. What will it take to position BelRed’s creative sector as a central figure to part of this growth, ensuring existing artists and creative businesses both

benefit from future investment and attract new artists and creative businesses to the neighborhood?

The opportunity is for a creative consultant to turn the idea of an arts district into action. The goal of this project is to identify and realize opportunities to integrate BelRed's creative community into a model of sustainable neighborhood development. At the heart of this effort is establishing the vital linkage between art, culture and economic systems: where cultural heritage becomes the framework for community development and a tool for decision making, planning, and investments. With an eye toward action, the consultant will work with the community to establish a common vision, clear goals, and consensus on projects that develop a unique and authentic identity, strengthen local networks, and build real capacity among participants. An effective strategy must encourage investment in human and financial resources to prepare artists and creative firms to meet the challenges of the rapidly developing neighborhood. At the same time, the strategy must also recognize creativity and culture as a reliable source of sustainable income and employment. By the end of the year, the consultant will have created an arts district governance group such as a task force, a three to five-year action plan, a list of potential partners and funding sources, and a proposal for a demonstration project to be carried out by the governance group, the consultant, or both, and funded through additional resources.

The City of Bellevue Arts Program will partner with the Economic Development Program to host a creative consultant. The Arts Program brings local creative and cultural neighborhood contacts, expertise in artist-led placemaking projects and the creative economy, and capacity building resources for artists and nonprofits. The Economic Development Program brings business networks, expertise in public-private partnerships and small business development, and incubator programs for startups.

We will host a creative consultant for one year. The long-term nature of this project is important because it offers time to meaningfully investigate the central questions guiding the project, as well as time to network with and engage BelRed's creative community in the co-creation of a community-based arts district implementation plan.

Action and Discussion

Tuesday, December 3, 2019
Meeting: 4:30 pm

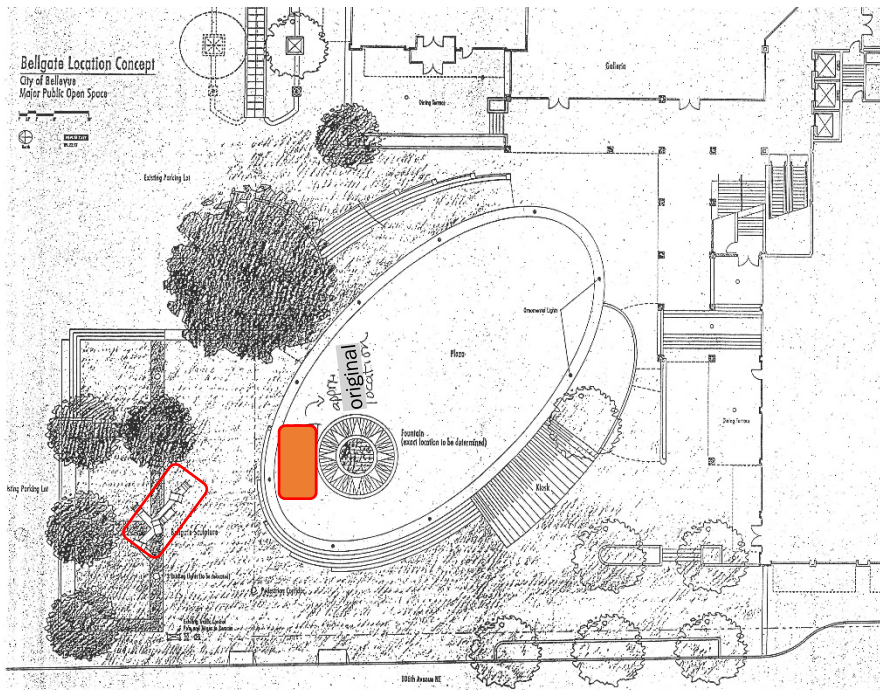
Bellevue Arts Commission Action and Discussion

Public Art Collection & Maintenance

Staff will present an update on two pieces of Public Art along with an update on the maintenance scope of work for a contracted position to be advertised soon. The purpose of this brief is to keep commissioners up to date on the various news and happenings related to the Public Art collection.

BACKGROUND

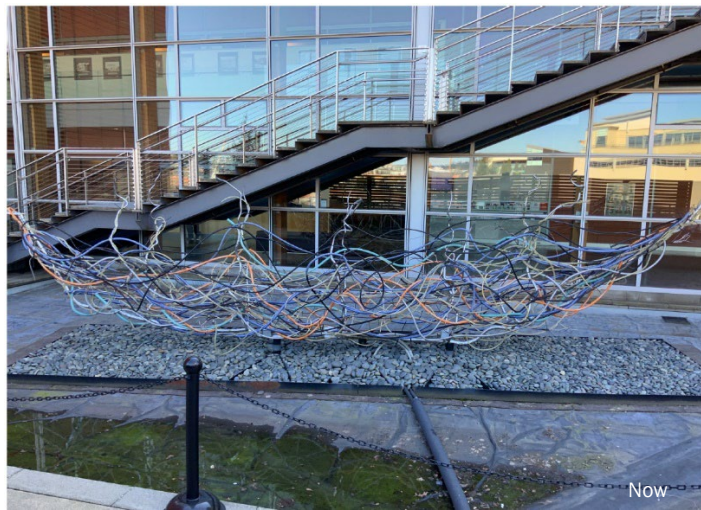
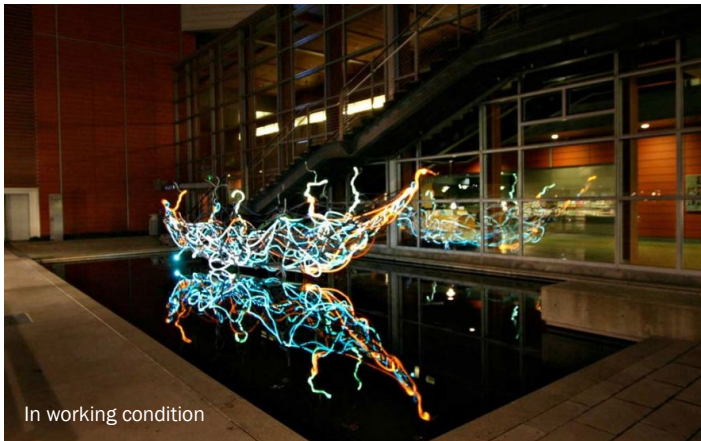
Currently, two pieces of public art in the City's permanent collection face requests for removal and significant maintenance needs. It is important to note that other public artworks, such as *The Garden of Alternatives*, also require considerable maintenance, but because of concurrent projects happening around these two pieces below, the arts program has had to address these pieces before the collection as a whole.



The first piece is *Bellgate* by artist Lee Kelly, a large sculpture that sits along the pedestrian corridor in downtown at 106th Ave NE. Onni Group, the developers for the site just north of the sculpture and owners of the property that Bellgate currently occupies, have requested the sculpture be removed to begin development in the coming year. Staff has been working with Development Services, Onni, and a city attorney to develop a plan for Bellgate. Several significant issues face the request to remove the sculpture, including the fact that the city only owns 23% of the large sculpture and the artist's intention of the piece to be a gateway to the pedestrian corridor, limiting some possible ideas for relocation.

Currently, the city is working on obtaining the current value of the piece which will help inform possibly proposing to assume full ownership. The 77% stakeholders are a nonprofit called Bellevue Allied Arts Council (BAAC), whose remaining member, according to their spouse, is terminally ill. The spouse expressed an interest in transferring ownership rights to the city in full. In the event that the BAAC transfers ownership to the city, a commissioner is required to Jury the accession of the gift, however,

details on the type of transfer (gift or purchase) have yet to be determined. All possible scenarios for the piece, including removal, repositioning on the same site or other, or storage are all still on the table.



The second piece is *Longboat Reed Rookery* (the “boat”) by artist Dan Corson. The piece currently sits in the east pond outside of City Hall, however, the ponds were drained a while ago after a leak was discovered in the boat’s section of the pond (both west and east ponds are connected under the first-floor entrance to City Hall from the parking lot). From concerns over the amounts of chemicals required to keep the ponds clear of algae and Washington facing more and more droughts, staff decided to keep the ponds drained, setting an example for residents on conservation and stewardship. This, coupled with the deterioration of the boat, has resulted in the piece sitting in an empty pond for the past few years, awaiting future plans to redesign the outdoor areas around City Hall. The conversation has been revisited recently and staff are working with the Facilities department and Mr. Corson on determining what to do with the artwork. Artech is working on developing a variety of options for the City, including a cost estimate of what each option could be. The commission will be updated as the future of this piece develops.

UPDATE

The Maintenance scope and schedule, assisted by the work previously contracted with 4Cutlure to assess the collection and propose a maintenance schedule, will be advertised soon. Staff hope the scope will be published before the holidays and that selection of a vendor can occur to start much-needed maintenance by the beginning of 2020.

Department of Planning and
Community Development

Reports

PROJECT UPDATES

GRANT PROGRAMS

2020 Funding Cycle and Allocations Committee

Update, December 3, 2019: An update will be provided at this meeting.

CIP Cultural Arts Fund

No updates to report.

Power Up Bellevue

Update, December 3, 2019: Final cohort meeting will be held in December. Survey will be sent to cohort members for feedback on program to help shape next year's cohort.

PLANNING PROJECTS

BelRed Arts District

Update, December 3, 2019: An update will be provided at this meeting.

BelRed Streetscape Plan Update

No updates to report.

Cultural Compass

No updates to report.

PUBLIC ART

130th Streetscape Public Art

No updates to report.

Bellwether 2019

No updates to report.

Downtown Park Public Art

No updates to report.

East Link Public Art

No updates to report.

Grand Connection

No updates to report.

Lattawood Park

No updates to report.

Public Art Collection & Maintenance

Update, December 3, 2019: An update will be provided at this meeting.

Department of Planning and
Community Development

Information



Christmas **SOUNDS** in *Burien*



Burien's favorite holiday tradition!

December 14 & 15, 2019 · 2pm
Highline Performing Arts Center

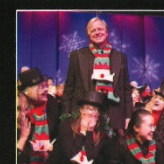
ADULTS \$20 · 17 & UNDER FREE WITH ADULT
NWASSOCIATEDARTS.ORG · 206.246.6040



NEW this season!
All seats
\$20



5 CHORUSES
150 SINGERS
A BURIED TRADITION



Christmas **SOUNDS** in *Burien*

Northwest Associated Arts proudly presents
our annual Christmas tradition,
ChristmasSounds in Burien!

Five choruses totaling nearly 150 singers, ages 9 to 90,
come together to sing in the season, delighting audience
members of all ages! We invite you to enjoy beloved favorites
like *Grown-Up Christmas List* and *The Wexford
Carol*, combined with the sing-along joy of
White Christmas and *Deck the Halls*. This festive
show is perfect Christmas fun for the whole
family and promise to leave you filled
with the spirit of the holidays!

17 & UNDER
ALWAYS FREE
WITH ADULT



NWAA thanks the following for their generous support of our 2019-2020 season:
The City of Burien · 4Culture · Tagney-Jones Foundation
KPFF Consulting Engineers · 909 Coffee & Wine Bistro
Ten Rosen Bar & Theater · JN Mailing Services, Inc.
and countless individuals, businesses and families who believe in our work.



Northwest Associated Arts
PO Box 48251
Seattle, WA 98148

Non-Profit Org.
US POSTAGE
PAID
Seattle, WA
Permit No. 4



*****AUTO**ALL FOR AADC 980
Bellevue Arts Commission
PO Box 90012
Bellevue, WA 98009-9012