



2018



Bellevue
Police Department

Report to the Community



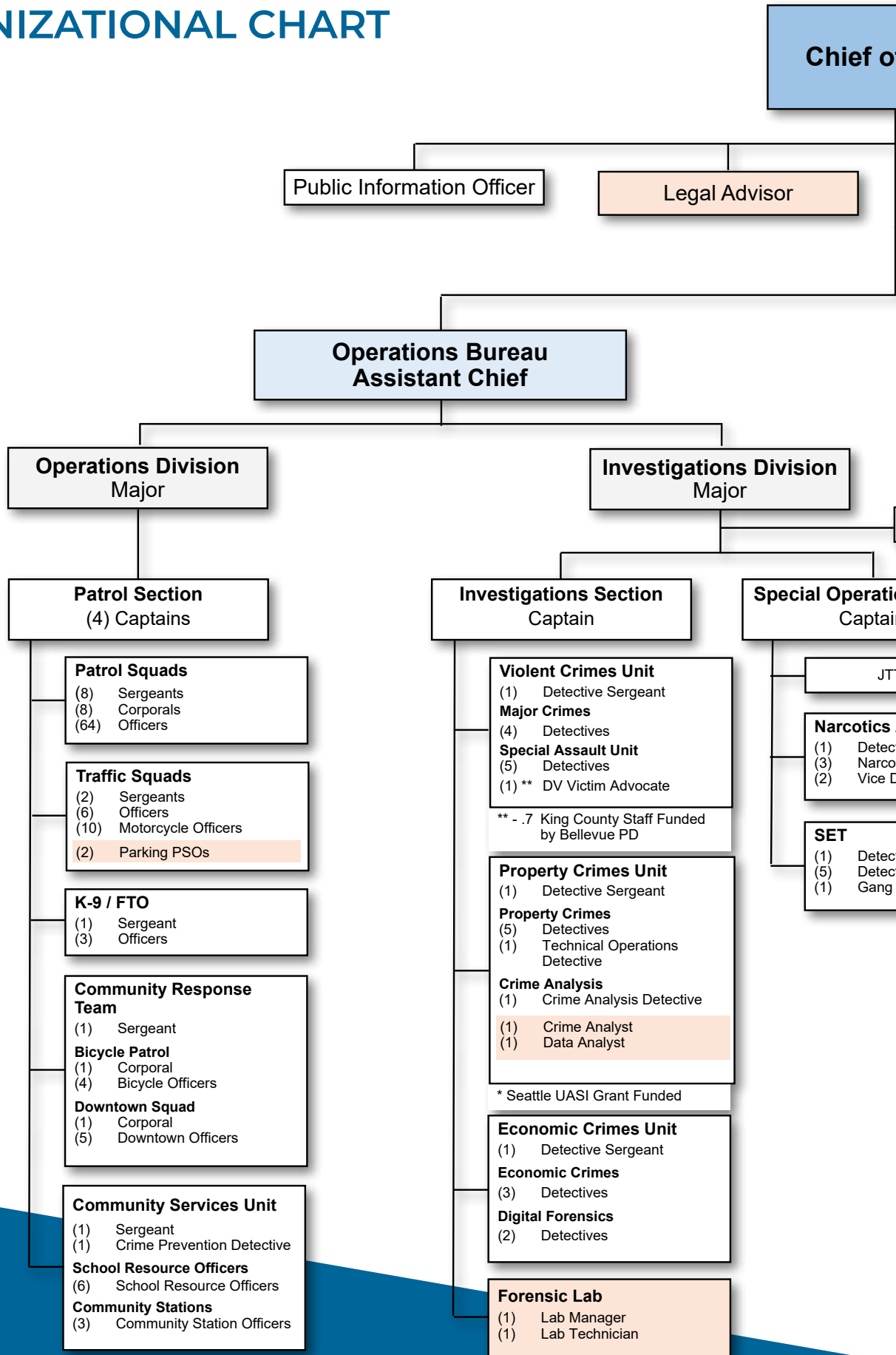
TABLE OF CONTENTS

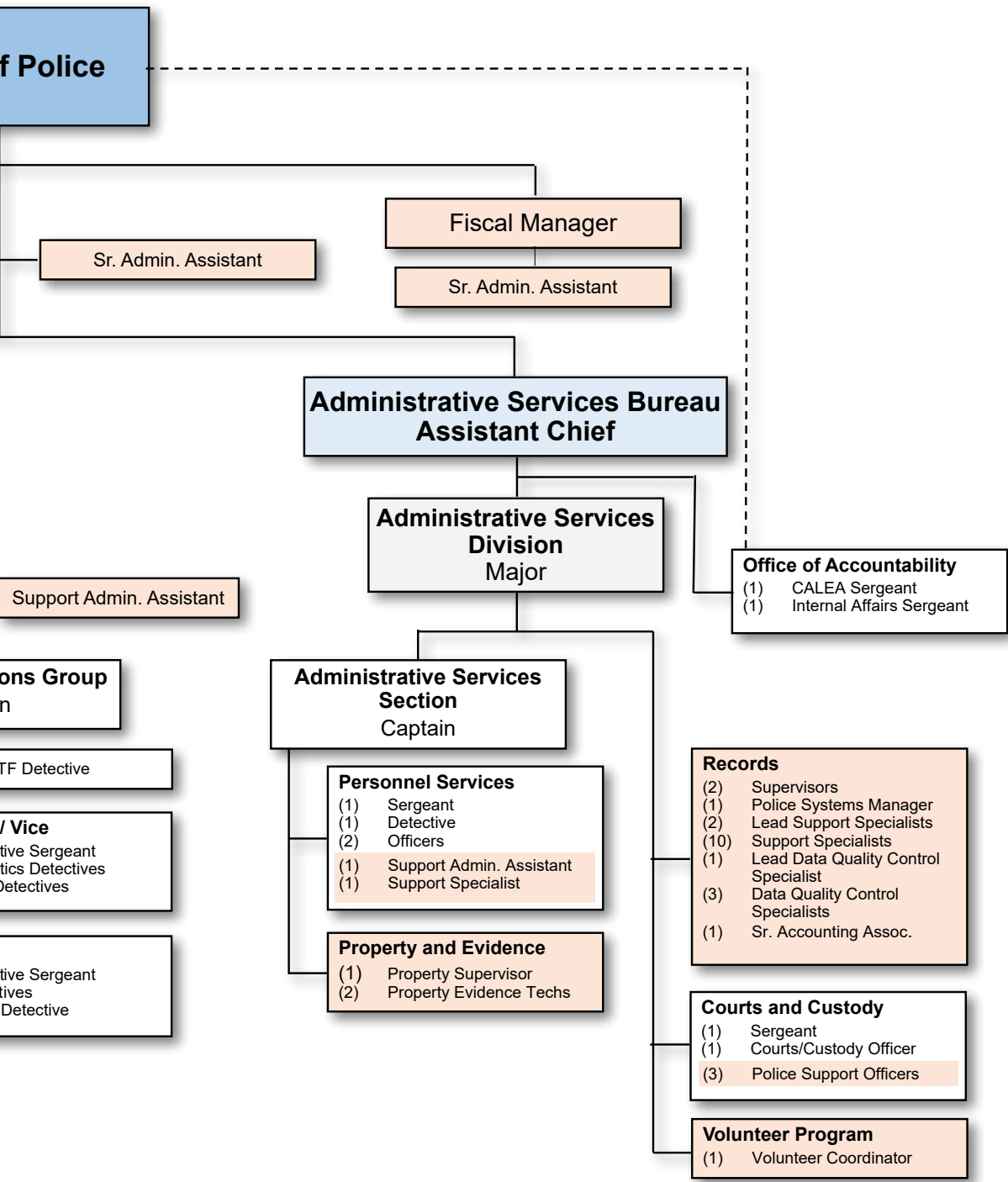
ORGANIZATIONAL CHART	4
EXECUTIVE LEADERSHIP TEAM	6
MESSAGE FROM CHIEF MYLETT	7
2018 FINANCIAL SUMMARY	8
BUDGET • EXPENDITURES AND REVENUES	9
OFFICE OF ACCOUNTABILITY	9
PUBLIC INFORMATION OFFICER	10
BELLEVUE AT A GLANCE	11
PERCEPTIONS OF PUBLIC SAFETY	12
CRIMES AND TRENDS	13
OPERATIONS	15
PATROL STATISTICS	17
OPERATIONS	19
BELLEVUE POLICE STATISTICS	25
TRAFFIC	27
INVESTIGATIONS	29
ADMINISTRATIVE SERVICES	35
HIRING AND TRAINING	39
AWARDS AND PROMOTIONS	41
VISION, MISSION AND GUIDING PRINCIPLES	42



For alternate formats, interpreters, or reasonable accommodation requests please phone at least 48 hours in advance 425-452-6917 (voice) or email bellevuepo@bellevuewa.gov. For complaints regarding accommodations, contact City of Bellevue ADA/Title VI Administrator at 425-452-6168 (voice). If you are deaf or hard of hearing dial 711. All meetings are wheelchair accessible.

2018 ORGANIZATIONAL CHART





Police Personnel			
		Commissioned	Non-Commissioned
Chief	1		
Assistant Chief	2		
Majors	3		
Captains	7		
Sergeants	22		
Corporals	10		
Detectives	35		
Officers	105		
		Administration	6
		Operations	130
		Investigations	41
		Administrative Services	8
		Total	185
			4
			2
			5
			29
			40
Total Police Department Personnel		225	

EXECUTIVE LEADERSHIP TEAM



Patrick Arpin
Assistant Chief of Police



Carl Kleinknecht
Assistant Chief of Police



Jon Hoffman
Administrative Services Major



John McCracken
Investigative Services Major



Andrew Popochock
Patrol Services Major



MESSAGE FROM THE CHIEF OF POLICE



Stephen L. Mylett
Police Chief

It is my pleasure to present to you the Bellevue Police Department's report to the community for calendar year 2018. As the city of Bellevue undergoes continued growth and change, the department continues to adapt to serve our diverse city. I hope you enjoy reading about our many accomplishments over the past year. We

strive to deliver superior

law enforcement services with respect, integrity, accountability, and service. I'm particularly proud of several notable accomplishments during 2018. These are best highlighted through three simple categories: Efficiencies, Operations and Community Outreach.

EFFICIENCIES

The Police Department has undergone several changes that will increase our overall efficiency. A plan to civilianize three existing sworn positions and hire four new Police Support Officers was approved by the City Council, and those changes will take place in 2019. Our hiring process for new employees, and specifically experienced lateral Police Officers was streamlined, and a new hiring bonus designed to attract experienced police officers to Bellevue was approved and implemented. Our records division acquired "GovQA", a new public records software that has resulted in a significant reduction in the workload related to the public disclosure process. A final example is a new process utilizing remote video cameras for a prisoner's arraignment in court instead of transporting him or her to make an in-person appearance.

OPERATIONS

Bellevue has continued to experience a reduction in certain property crimes for the third consecutive year. Residential burglaries and motor vehicle prowls are down by 20 percent and 21 percent respectively. This is a significant reduction that is a direct result of the diligent work of our investigators, bicycle officers, patrol officers and sector captains. The reduction in crime is also due to our engaged residents, workers and businesses that are proactive in notifying us of criminal activity.

COMMUNITY OUTREACH

The department has continued to be a leader in its outreach and engagement with the Bellevue community. Examples include our involvement in the annual Muslim and Immigrant Safety Forum, town hall and HOA meetings, and our continued involvement with the YMCA Youth and Government Program, the Boys and Girls Club of Bellevue, and the Bellevue School District's partnership with Rainier Athletes.

These are just a few examples of our many accomplishments this past year. We have had many successes and challenges over the past year, and I would like to personally thank the community, City Council, city staff, as well as each and every member of the Bellevue Police Department, for their continued dedication and support.

A handwritten signature in black ink that reads "Stephen L. Mylett". The signature is written in a cursive, flowing style.

Chief Stephen L. Mylett

2018 FINANCIAL SUMMARY



Carl Krikorian
Police Fiscal Manager

The Bellevue Police Department's primary fiscal goal each year is to acquire all necessary goods and services for department personnel that will enable them to deliver the highest standard of police services to the public, while being effective stewards of the resources provided by that same public.

In 2018, the Department achieved both of these goals. The Department met and even exceeded its 2018 budget target. With an annual budget of \$45,183,425, total spending for the year was \$44,985,746, a savings of \$197,679.

Staff vacancies continue to be an area of concern, despite significant efforts to recruit and retain quality police officers. Sworn officer vacancies peaked at sixteen in October, or about 9% of our total authorized strength, with an average of about thirteen vacancies per day during the year. Competition for both entry level and lateral officers is fierce, not only regionally but also nationally, and when combined with normal staff attrition, achieving a real reduction in vacancies is difficult. Ironically, however, those very same vacancies helped the Department achieve its budget savings.

The majority of police spending (70%) is driven by direct personnel costs, which includes salary plus benefits, for an authorized staff of 185 sworn officers and 40 professional support staff at year-end 2018. Another 18% of department spending is fixed overhead cost, leaving only 12% of its total budget as discretionary spending.

Police officers were required to work a large amount of overtime in 2018 in order to provide security and traffic safety coverage for a wide variety of special events occurring within Bellevue City limits, the cost of which was 100% reimbursed by the sponsoring agencies. Total special event overtime cost was \$206,932 for events such as the annual Snowflake Lane parades, Garden d'Lights, Movies in the Park, foot races within city limits, commercial television shoots, and community events.

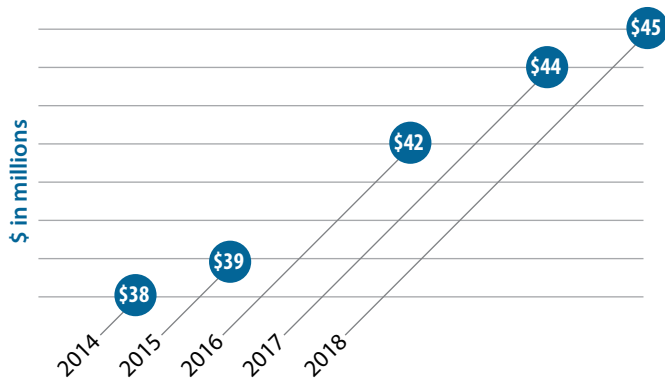
Grant revenue was relatively minimal in 2018, due to the elimination of the Eastside Narcotics Task Force in July 2016, which had been a major driver of grant revenue for over fifteen years. However, the department did receive over \$26,000 in both federal and state grant funding for bicycle team equipment and staff training.

In addition, the Bellevue Police Foundation, an independent 501(c)(3) charitable organization supporting the Police Department, contributed \$120,000 to the Department, with most of these funds directed toward the purchase of SWAT team equipment, crime analysis software, and bicycle team training.

The Department generated over \$900,000 in revenue for the city in 2018, with income from traffic flagging, false alarm fines, and reimbursements for police services as the major contributors.

BUDGET • EXPENDITURES AND REVENUES

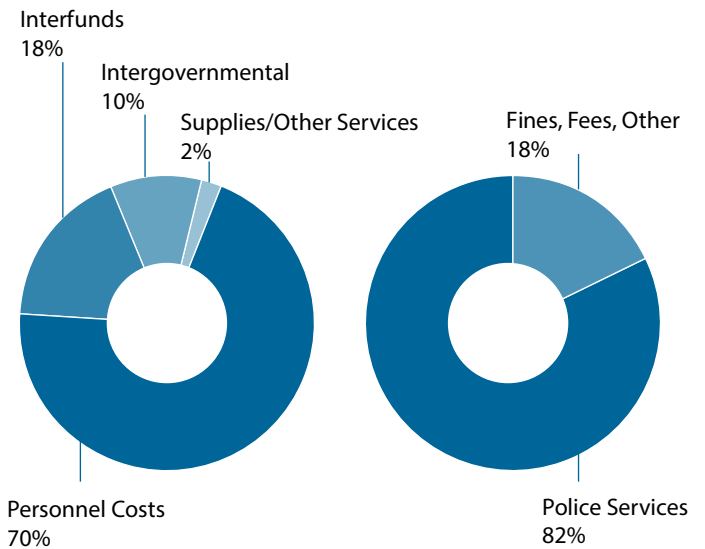
2013–2018 Budget



Expenditures and Revenues

Expenditures: \$43.1 million

Revenue: \$916,000

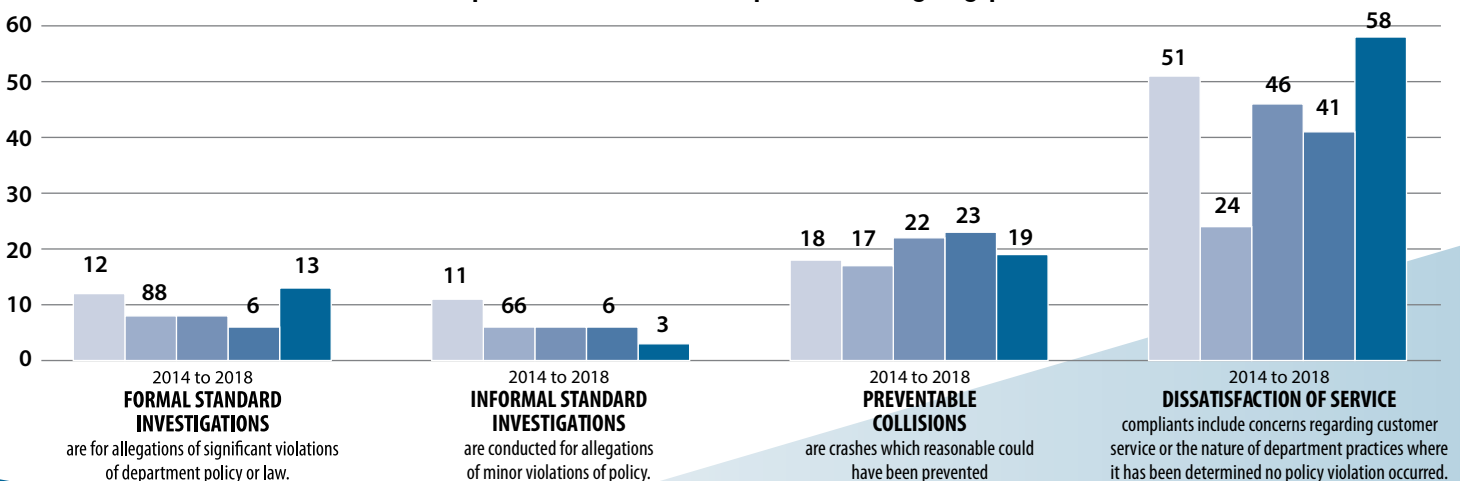


OFFICE OF ACCOUNTABILITY

The Office of Accountability (OA) has several areas of responsibility, including internal affairs investigations, accreditation management, and policy management. The office reports directly to the administrative services Assistant Chief and is staffed by two Sergeants. The department’s legal advisor works closely with office staff. The Office of Accountability investigates internal and external complaints of alleged employee misconduct, violations of rules and regulations, and violations of law.

The Bellevue Police Department has attained the highest level of law enforcement accreditation from the Commission on Accreditation for Law Enforcement Agencies (CALEA), the “gold standard with excellence” level of accreditation. In 2017, the department began a new four-year assessment cycle.

Department Complaints by Type



PUBLIC INFORMATION OFFICER



Seth Tyler
Public Information Officer

The Public Information Officer (PIO) is a commissioned police officer rotated into the assignment every three to five years. The function of the PIO is to represent the Chief of Police and the Bellevue Police Department to the community and media. The PIO coordinates timely responses to media inquiries, provides information about police incidents and cases, and works to educate the public about

safety and crime prevention issues. The PIO maintains the Department's internet and intranet pages, social media accounts, and various other information sources. The Police Department routinely works with local media and organizations such as CrimeStoppers of Puget Sound to assist in identifying and locating wanted individuals and also to assist in recovering stolen property. Social media outlets such as Twitter, Facebook, Nextdoor.com, and the Department's blog, www.bellevuebeatblog.com, have allowed the Department to provide real time information to residents and members of the media.

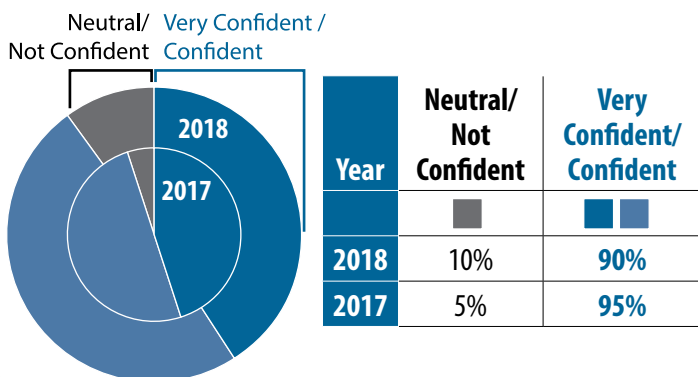
The Bellevue City Council approved the civilianization of three positions within the police department in 2018, including the PIO role. A new civilian Public Information Officer will be selected and hired in early 2019.

CONFIDENCE AND PROFESSIONALISM IN POLICE DEPARTMENT

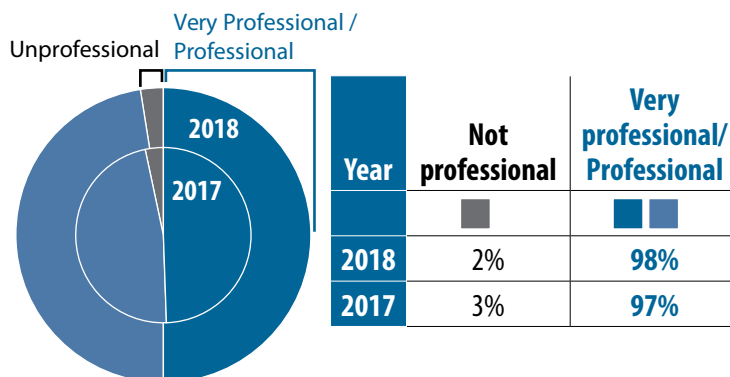
In 2017, the question, "How confident are you in the ability of the Bellevue Police Department to handle emergencies in an effective manner?" was introduced. While confidence in police decreased slightly when compared to 2017, nine-in-ten residents state they are "Confident" or "Very Confident" that the Police Department can handle emergencies in an effective manner.

Residents also rated the professionalism of Bellevue's police officers and employees. Just as in 2017, residents provide very high ratings of professionalism.

Confidence in Police



Professionalism of Police



BELLEVUE AT A GLANCE

1953

Year the City of Bellevue was incorporated

5,950

Bellevue's population at time of incorporation

142,400

Bellevue's population in 2018

1960s

Period of rapid growth in Bellevue – with floating bridges across Lake Washington, Bellevue becomes bedroom community to Seattle

147,600

Job total citywide (2017) – major employers include Bellevue College, Bellevue School District, Boeing, Concur, Expedia, Microsoft, Nordstrom, Overlake Hospital Medical Center, Puget Sound Energy, Symetra Financial, and T-Mobile USA

10

Bellevue's rank on Livability's national list of "Top 100 Best Places to Live" (2018)

4

Bellevue high schools receiving a Gold or Silver Medal from U.S. News and World Report's Ranking of Best High Schools (2018)

17,700

Average quarterly enrollment of all students at Bellevue College in 2016-2017 school year

Downtown Bellevue

410

Downtown in acres (1.87% of city's total land area)

21

Downtown Park in acres

50,800

Downtown jobs (2017)

74,200

Forecast workforce by 2035

22,200

Projected downtown residents in 2035

87,200

Downtown's average "daytime population"

1,700

Visitors to the Bellevue Regional Library each day

1,150

Buses coming into Bellevue Transit Center each weekday

Connect with the Bellevue Police Department

WEBSITE: police.bellevuewa.gov

BLOG: bellevuebeatblog.com

RECRUITING: protectbellevue.com

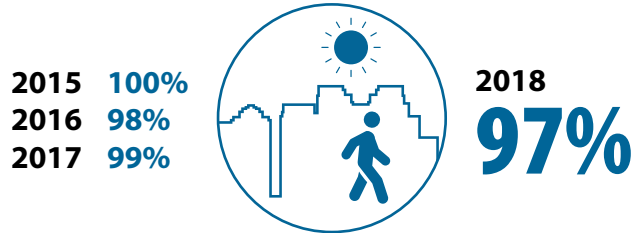
ONLINE REPORTING: reporttobpd.com



PERCEPTIONS OF PUBLIC SAFETY

Each year, Bellevue residents are randomly surveyed as part of the city's annual performance measures survey. Ratings related to the police department and perceptions of safety are included here.

Percent of people surveyed who feel safe walking alone in **downtown business area during the day**



Percent of people surveyed who feel safe walking alone in **neighborhoods during the day**



Percent of people surveyed who feel safe walking alone in **downtown business area after dark**



Percent of people surveyed who feel safe walking alone in **neighborhoods after dark**



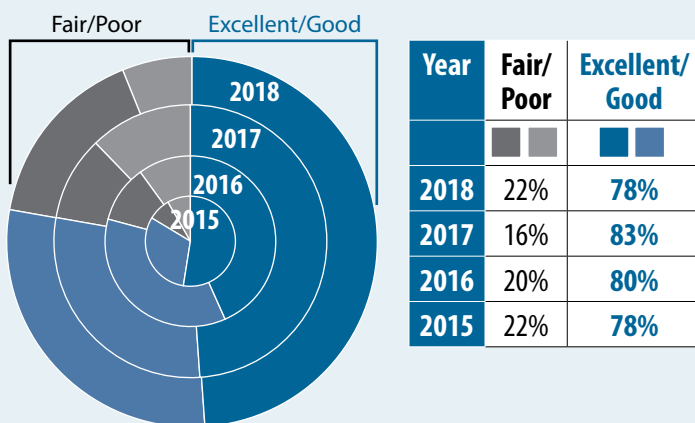
POLICE CONTACT

Eleven percent of Bellevue residents say that they or someone in their household was the victim of a crime in the last 12 months—the same as 2017. Of those, sixty-eight percent (68%) reported the crime to police.

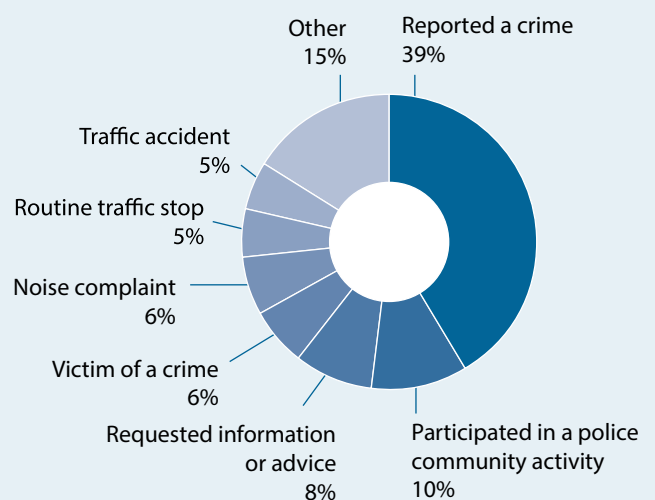
One quarter of Bellevue residents had contact with the police in the last 12 months. The most frequent reasons were to report a crime, participate in a community activity, or ask for information or advice.

Eight out of ten residents who had contact with the police reported a positive experience—half said the contact was “Excellent.”

Ratings of Police Contact



Nature of Police Contact



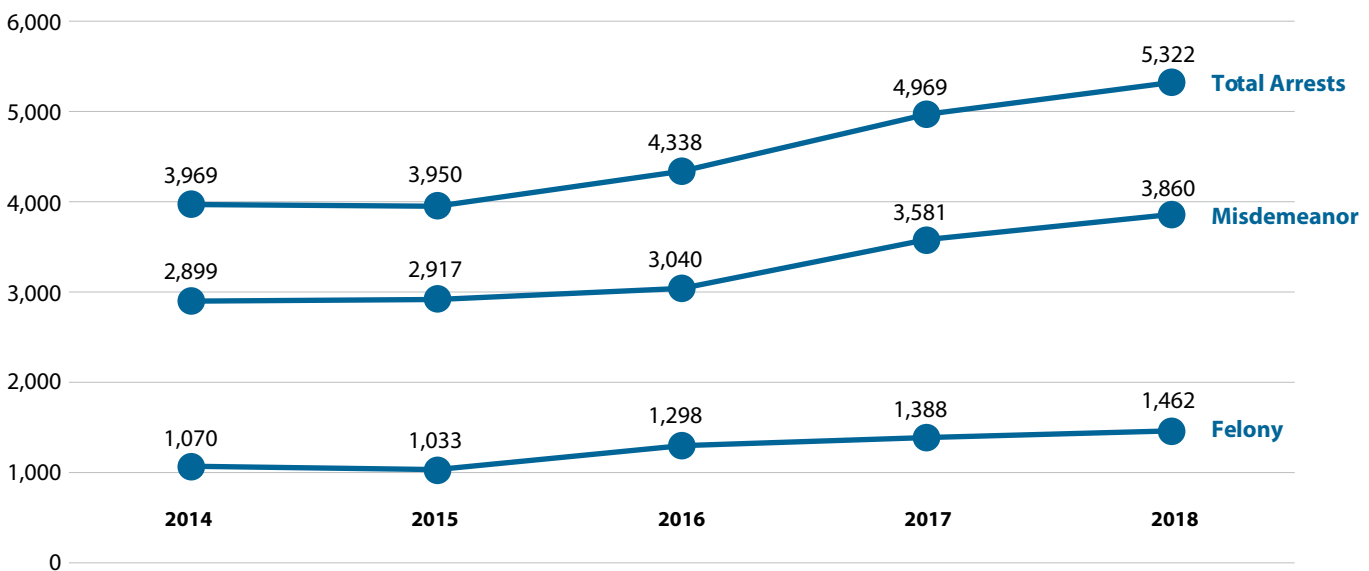
CRIMES AND TRENDS

Part One Crimes are reported to the FBI annually. The chart below shows the Part One Crimes included in Bellevue's report. No single measure or statistic can capture or define crime trends, but Part One Crimes is a good starting point as it is the industry standard.

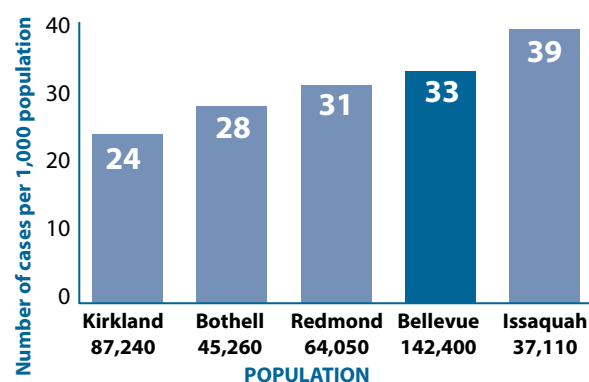
Summary and Crime Comparison Part One Index Crimes 2013-2017

YEAR	HOMICIDE	RAPE	ROBBERY	AGGRAVATED ASSAULT	TOTAL VIOLENT CRIMES	BURGLARY	LARCENCY	AUTO THEFT	ARSON	TOTAL PROPERTY CRIMES	TOTAL PART ONE CRIMES
2014	2	25	65	52	144	631	3,662	314	14	4,621	4,765
2015	2	25	64	63	154	732	3,484	221	23	4,460	4,614
2016	0	15	63	58	136	636	3,615	323	13	4,587	4,723
2017	0	24	59	65	148	570	3,568	331	21	4,490	4,638
2018	0	25	87	76	188	524	3,602	386	13	4,525	4,713
5 Year Average	1	21.8	59.8	58.8	141.4	651.4	3,468	287.6	19	4,426	4,568

Bellevue Arrests by Year



Part One Crime Comparisons



Other Crimes of Interest

YEAR	RESIDENTIAL BURGLARY	COMMERCIAL BURGLARY	CAR PROWLs	SIMPLE ASSAULTS	VANDALISM
2014	458	173	1,660	386	526
2015	480	252	1,459	426	553
2016	413	223	1,611	421	603
2017	344	226	1,394	454	496
2018	275	249	1,100	533	546



Bellevue's School Resource Officers

OPERATIONS

PATROL



Andrew Popochock
Operations Major

The Patrol Operations Division is the largest section of the Bellevue Police Department, and consists of 128 commissioned Police Officers, two limited commissioned Parking Enforcement Officers, and a Crime Prevention Detective. The Patrol Operations Division comprises all uniformed police personnel including eight patrol squads, traffic

enforcement and collision investigators, downtown policing officers, bike patrol, community station officers, and the K-9 unit. The Patrol Division also includes several specialty units, including the SWAT team, Crisis Response Team, Bomb Squad, Honor Guard, Field Training Officer program, and the Civil Disturbance Unit. Our Patrol Officers are responsible for immediate response to all 911 emergency calls, routine calls for service and proactive policing.

The Patrol Division continues to make community relations and trust building a priority through the Sector Captain program and diversity outreach initiatives. The sector Captain program divides the city into three sectors, with one patrol Captain responsible for each sector. The three sector Captains have enhanced the department's community outreach by interacting with a diverse range of stakeholders throughout the community. The sector Captains also help coordinate department resources to identify and target crime trends and other quality of life issues within their areas of responsibility.

The Patrol Operations Division participates in several community safety forums that are organized in partnership with various community groups. These forums focus on personal safety, diversity outreach, and specific concerns related to policing

in minority or immigrant communities. The Patrol Division continues to work toward educating all Officers and leaders in cultural competency and implicit bias. In 2018, the Bellevue Police Department invited two instructors from the FBI National Academy to further our education in these subjects. Over 100 officers attended this training.

The issue of homelessness continues to be an increasing concern throughout the city and the region. Members of the Patrol Division joined in discussions with community stakeholders and other city departments about concerns related to this issue. The department focuses on enforcement and compassion when dealing with this issue. Officers work hard to provide resources to those experiencing homelessness while still enforcing the law. Much of the work in this area has been taken on by members of our bike team. Team members work in concert with other city departments, governmental organizations, and outreach agencies to ensure a unified response to the growing homelessness issue in Bellevue.

As the front line division of the Bellevue Police Department, the Patrol Division continues to accomplish its' mission of reducing crime, reducing the fear of crime, and enhancing public trust. Patrol Officers partner with other divisions within the Bellevue Police Department to identify and address crime trends as they develop in the city. Patrol Officers also partner with businesses and organizations within the city to ensure that they are working in partnership with us to address crime trends they are seeing.

Staffing has continued to be a challenge in 2018. As we enter 2019, our hiring has increased with the addition of a lateral Officer signing bonus. In 2019, patrol will focus on re-staffing our motorcycle, bike, and downtown units with the mission of Community, Mobility, and Safety. The patrol division would like to thank the residents of Bellevue for the support and the partnership to keep Bellevue a great place to live, work, and play.

CITIZEN ADVISORY COUNCILS

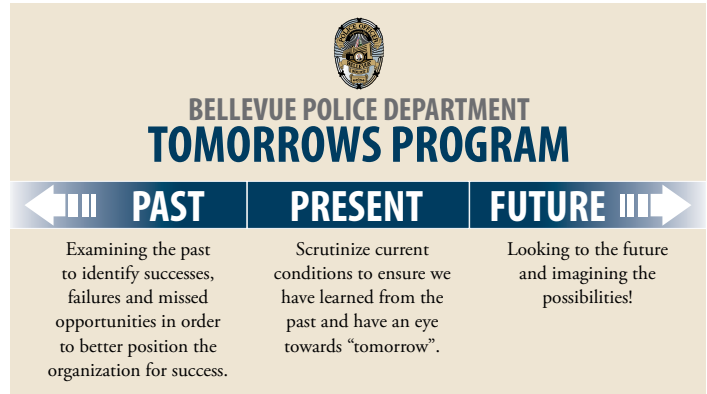
The Bellevue Police citizen advisory councils were formed as an important part of the Bellevue Tomorrows Program, a program designed to examine successes of the past, as well as the current policies, practices and procedures of the Bellevue Police Department, with an eye towards making lasting improvements for the future. The six citizen advisory councils incorporate a broad cross section of the Bellevue community.

The first Citizen Advisory Council formed in early 2016 with the African American Advisory Council. Since then, five additional councils have been formed: Muslim, Latino, LGBTQI, Interfaith, and Asian and Pacific Islander.

The advisory councils meet every three months for a two-hour discussion on how to improve the delivery of services that the Bellevue Police Department provides to the community. The councils collaborate with the department on projects and provide guidance to the Chief of Police on best practices and approaches. They also help to identify barriers that exist between police officers and members of the community and develop strategies to eliminate the barriers.

The goal of the Tomorrows Program is to strengthen the relationship between police and the community through trust, respect, and mutual understanding. We do this by establishing an environment that promotes dialogue, education, and a true, sustainable partnership.

The Bellevue community in general – and the Muslim community in particular – experienced another destructive arson fire to the Islamic Center of the Eastside house of worship in March of 2018. This was the second destructive arson fire in less than 18 months and the entire structure was lost in the inferno. Partners from our local, state, and

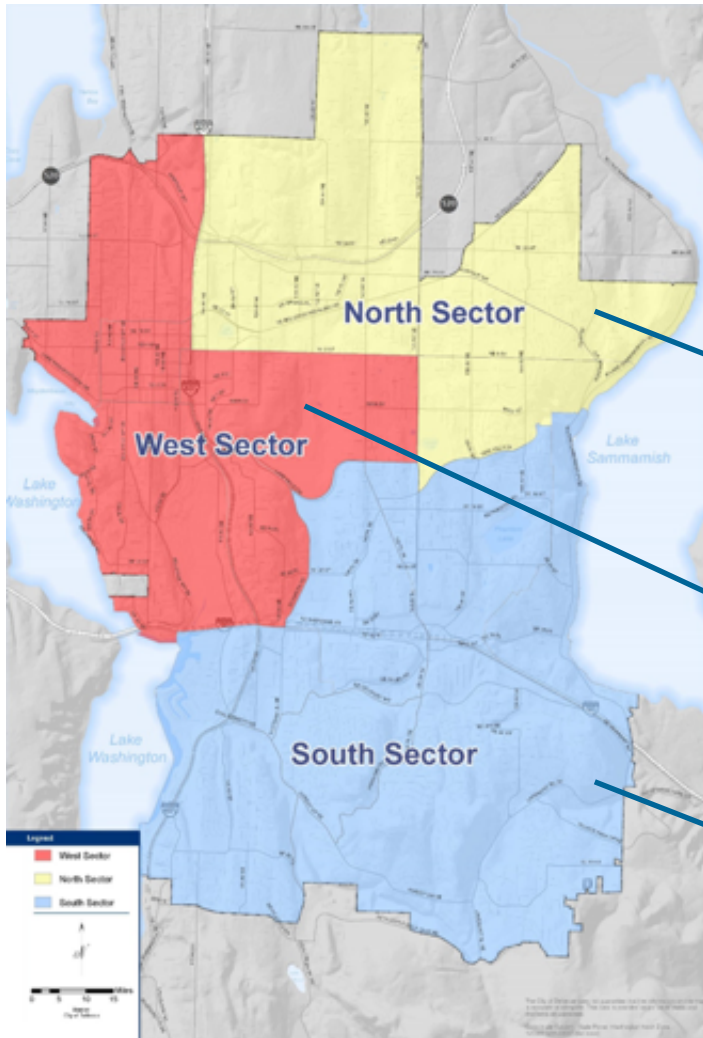


federal agencies came together to help us solve the case in a matter of just a few days. Although we were eventually able to rule out that the arson was the result of a hate crime, the community was again challenged with fear and uncertainty. All of our Advisory Councils partnered with the City's Neighborhood Outreach team and the Bellevue School District to host a community gathering in the wake of crime. The strong partnerships of trust and legitimacy that had been built over the previous two years were very evident and helped the community grow stronger together through the adversity.



Mohammed Bakr, a member of Bellevue's Muslim Community, provides training to officers on interacting with the Muslim community.

SECTOR CAPTAIN PROGRAM



The Sector Captain program was formed in 2015 by Chief Mylett, who saw a need for a direct point of contact for Bellevue Residents or businesses with questions or concerns related to crime or police activity. The Sector Captains are each responsible for a defined area of the city, and work collaboratively with the residents and businesses in their area of responsibility to address problems and concerns.



North Sector

Captain Joe Nault

NorthSectorCaptain@bellevuewa.gov



West Sector

Captain Marcia Harnden

WestSectorCaptain@bellevuewa.gov



South Sector

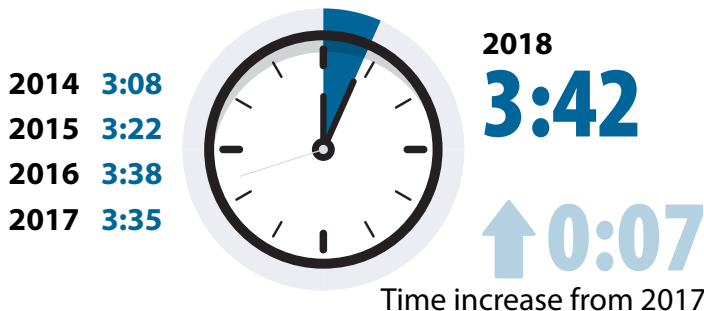
Captain Mark Tarantino

SouthSectorCaptain@bellevuewa.gov

PATROL STATISTICS

Priority One calls are life-threatening emergencies.

Average Priority One Response Times



Total Calls for Service

2014	58,889
2015	64,351
2016	65,630
2017	65,646



2018
65,944

↑ 298

Number of calls increased from 2017



Members of the Bellevue Police Department's Honor Guard

OPERATIONS

Special Details

The Community Response Team is made up of two separate units working together as one team. The team is comprised of the Downtown Unit consisting of one Corporal and three officers, and the Bicycle Unit consisting of one Corporal and four bicycle officers. The entire team is supported by one Sergeant and is part of the Patrol Division.

The Downtown Unit performs patrol services and proactive problem solving in downtown Bellevue. Downtown Unit Officers work hand in hand with community members, businesses and other stakeholders to combat chronic issues such as organized commercial burglaries, retail theft, motor vehicle prowls and a variety of nightlife related issues. In 2018, all the positions in the Downtown Unit were vacant due to staffing shortages throughout the police department. The police department looks forward to filling the vacant positions in the future as staffing allows.

The Bicycle Unit completed its second full year in 2018 after a five-year hiatus. The Bicycle Unit's mission is to focus on quality of life issues, ensuring that Bellevue is a safe place to live, work and visit. The Bicycle Unit directs their high visibility efforts towards parks, malls, shopping centers, nature trails, park and ride lots, and high pedestrian traffic areas of Bellevue.

The Bicycle Unit also is at the primary point of contact for issues involving homelessness. These type of calls for service require our officers to assess the situation and the people involved. Officers commonly must determine whether the call for service is medical in nature, such as a drug or alcohol related issue, a mental health issue, is criminal in nature, or whether it is a community caretaking function such as locating shelter or providing resources for people in need. The

Bicycle Unit has been successful in addressing these issues by involving our partners within the community, including the King County Mobile Crisis Team, property owners, Congregations for the Homeless, the Washington State Department of Transportation, other City of Bellevue departments and others.

The Community Services Unit consist of one Sergeant, two Community Station Officers, six School Resource Officers, and one Crime Prevention Detective.

Bellevue's two community Police Stations are located in the Factoria and Crossroads neighborhoods. The community stations are open to the public throughout the week during regular business hours. The stations are staffed by a full-time uniformed officer and civilian volunteers. The dedicated citizen volunteers work tirelessly to ensure the stations are open every day, and the Bellevue Police Department is represented at community events such as National Night Out Against Crime, child safety fairs, and DEA drug take-back events. Community Station Officers devote the majority of their time to problem-oriented and community-oriented policing. They also focus on proactive law enforcement, provide safety related community presentations, and facilitate community meetings. Community Station Officers and the Crime Prevention Detective work closely with community stakeholders to develop relationships that promote cooperation and solve challenges.

The Factoria Community Station, located inside the Factoria Square Mall, is staffed by veteran Officer Tory Mangione and eleven volunteers. This year, Officer Mangione and volunteers organized the annual child safety fair. The event was a success and brings out community members as well as businesses with a goal of keeping children safe.

Officer Mangione also devoted his time addressing parking complaints related to people living out in their vehicles on public right of ways. He worked with social services such as Congregations for the Homeless, and the City of Bellevue's legal department, to adopt a plan to help these individuals. Officer Mangione held community meetings to help educate and inform our citizens affected by the issue. We also partnered with Target to sponsor over twenty Bellevue youth for the annual "Shop with a Cop" event in December, providing holiday gifts to children that would otherwise not be able to afford them.

Officer Craig Hanaumi, our Crossroads Community Station Officer, continues to be an integral part of the Crossroads community. The Crossroads community station is also staffed by ten volunteers who perform many of the day to day functions

at the substation. In 2018, Officer Hanaumi coordinated with the Salvation Army to provide officers from the Bellevue Police Department to serve meals to those in need once a month at the organization's Bellevue location. This program has improved the reputation of the Bellevue Police Department, and has increased trust between officers and the community they serve. Officer Hanaumi also continued teaching self-defense classes. The program is intended to build self-esteem and confidence in the individuals who attend the class. Officer Hanaumi also works closely with the Boys and Girls Club and helps to mentor youth throughout the City of Bellevue. This includes a monthly "teen feed" which he organizes and is supported by other Officers to help serve dinner and build a positive relationship with youth in the community.



Factoria Station Officer Tory Mangione partnered with Target to organize a "Shop With a Cop" event.

School Resource Officers (SRO) support the Bellevue School District by dedicating six School Resource Officers to the schools; one assigned to each of the four high schools in the city and two assigned to the four middle schools. The Police Department recognizes that schools are much more than places to learn. They are de facto community centers, where needs and resources come together. The officers' presence in the schools helps to create a safe learning environment for students and educators. The SROs also work with families and community organizations to intervene with at-risk or criminal behavior among youth. In 2018, the SROs handled over 4,500 school-related inquiries, a large increase from the previous year. These incidents included calls for service that patrol officers would otherwise have to handle, assisting officers and detectives with investigations involving students, and complaints involving gangs, drugs, weapons and threats of violence, among others. In addition to these types of investigations, the SROs' work also involves crime prevention and community outreach activities such as classroom presentations, welfare checks for truant students, and dispute mediations. Now in its 22nd year, the School Resource Officer program is an example of the Police Department's long-standing commitment to the community, building trust through service.

The Crime Prevention Detective is responsible for administering crime prevention related programs, the Bellevue false alarm reduction program, as well as the monitoring of retail marijuana outlets in the city. This detective works closely with the Sector Captains to respond to requests for community meetings, presentations and block watch coordination. In 2018, the Crime Prevention Detective organized two "Coffee With a Cop" events and helped coordinate National Night Out. This position was staffed in 2018 after being vacant for over a year.

The Crisis Response Team (CRT) is comprised of eight specially trained negotiators who work with patrol officers and the SWAT team to peacefully resolve incidents involving barricaded suspects, suicidal persons and hostage situations. Team members are trained in negotiating with individuals

in situations in which mental illness or substance abuse are involved. The partnership between CRT and SWAT is vital, as the Police Department must anticipate potential outcomes for events that involve people who are likely facing an unprecedented crisis event in their life. The goals of the team are to provide exceptional service to the community by responding to dynamic events and to de-escalate those events by communicating to the involved people, building rapport and trust, leading to peaceful resolutions. One example of the excellent work provided by the CRT was on a



Bicycle Officer Larry Perreira at a May Day event in Seattle.

deployment with SWAT in July of 2018 for a subject who was highly intoxicated and was causing a disturbance inside a home. A neighbor who heard the disturbance called 911. First responding officers learned that the intoxicated male was a respondent in a no contact order which restricted his contact with the family member inside the home. Negotiators were able to reason with the

intoxicated male and he eventually came out of the home voluntarily. There were no injuries and the entire event lasted approximately 5 hours. This was an excellent example of the role of the team which is to defuse and peacefully resolve high risk situations. In 2017, the Bellevue Police Foundation generously funded a van for use in CRT operations. The van is outfitted specifically for the needs of this team. The van is now in service and already assisting the residents of Bellevue.

The K-9 Unit is responsible for visible patrol, response to in-progress calls, tracking of fleeing suspects, searches, evidence location and narcotics detection. In 2018, the K9 unit was deployed 141 times. The three handler/dog teams in the unit located 44 suspects, conducted numerous area searches, building searches and narcotics searches, and recovered critical pieces of evidence at crimes scenes.

The K-9 unit consists of a Sergeant, three K-9 Officers who are specially trained and certified dog handlers, and three police dogs. In 2018, the K9 Unit also provided training sessions for several elementary school groups as well as two City of Bellevue Police Citizen's Academy classes.

Field Training Officers (FTOs) are a dedicated group of officers responsible for the training of all new Bellevue Police Officers. In 2018 there were 12 certified Field Training Officers in the department. These officers are all department veterans who have completed a 40-hour Field Training Officer Academy. After completion of the basic police academy, new student officers follow a 15-week high intensity training program with an FTO acting as a mentor and trainer. Nineteen student officers completed some part of their field training process during 2018. Additionally, twelve officers successfully completed their one year probationary period in 2018.



Officer Ryan Lange and his partner, Ghost

The Honor Guard is authorized for ten commissioned members. These officers receive specialized training and dress uniforms and serve as ambassadors of the Bellevue Police Department at funerals, ceremonies, and other events. In 2018, three new team members were selected, bringing the team up to full staffing. The Honor Guard participated in more than 29 events ranging from City of Bellevue ceremonies, Bellevue Police Department retiree funerals, regional officer funerals, and other momentous events. The Bellevue Police Honor Guard team was specifically requested to fulfill a specialized detail as part of the Kent Police Department Line of Duty Death service for Officer Diego Moreno.

The Special Weapons and Tactics (SWAT) Team completed over 21 total missions in 2018 with 61 total deployments. These operations included high

risk search warrants for the Investigations Section and Special Operations Group. In addition, the team provided immediate action teams for the 4th of July event in Downtown Park as well as the annual Snowflake Lane events downtown.

To maintain their high level of proficiency, each SWAT member participated in nearly 300 hours of specialized training in 2018, which included waterborne and land-based navigation. Sniper personnel and explosive breaching experts participated in additional specialized training. Our team also provided static displays for several community events including National Night Out Against Crime, the annual Bellevue Police Foundation breakfast, and the annual Children's Safety Fair, and hosted instructional classes for those attending our community academies. The team also worked with the Bellevue Fire Department to focus on interoperability for a mass casualty incident by providing rescue task force training and "care under fire" training to patrol officers and firefighters. The team also improved their mobile arrest and apprehension tactics to better support the Investigations Section in their investigations.

The Bomb Squad consists of a Commander and four certified Bomb Technicians. The squad is a regional team that responds to calls in Bellevue, Kirkland, Redmond, Issaquah, and Mercer Island. In 2018, the Bomb Squad responded to five suspicious or unattended package calls in the region, as well as sixteen recoveries of explosive materials and ammunition disposals. Technicians conducted twelve security details, including coordinating with the U.S. Secret Service for visits made by dignitaries. In addition, four presentations were made to area schools and community academies. Members also provided training to local businesses on bomb threat response. The Bomb Squad also assisted with security measures for the nightly Snowflake Lane event in December. Technicians conducted protective sweeps for explosive threats for the event and were assisted by explosive detection K-9 units from the Washington State Patrol.

All Bomb Squad members received approximately 240 hours of annual training that is required by the FBI to maintain certification. Additionally, members



Bomb Squad members, Dave Rivera and Doug Brennan, use a robot to examine a suspicious device left at the Bellevue Transit Center.

attended specialized training classes to maintain their skills, proficiency, and knowledge of current trends in explosive threats. Two Bomb Squad members are cross trained as SWAT team members and are currently assigned to the SWAT Team.

Crime Scene Investigators (CSI) are Bellevue police officers that have received additional training from the Criminal Justice Training Commission in the area of fingerprinting, photography, and evidence collection. Additionally, CSI Officers receive an additional 40 hours of training in advanced crime scene processing. This training includes fingerprinting, photography, trace evidence collection, tool mark impressions, the collection of DNA evidence, and crime scene diagramming. In the coming year, the CSI program is organizing an in-depth concentrated training session that will be taught in-house for those officers interested in becoming Crime Scene Investigators. The Patrol Division currently has six CSI trained patrol officers who assist with crime scene processing. CSI Officers, along with Bellevue Police Department Forensics Technicians, also serve as instructors and presenters for the Crime Scene Investigation portion of the Department's Community Academy.

The Civil Disturbance Unit (CDU) consists of a Captain acting as the team commander, a second Captain filling the role of back-up commander, four Sergeants, and 19 Officers. The CDU team receives specialized training in controlling large groups of people, making mass arrests, and protecting the

rights of demonstrators and community members. The CDU team is divided into a line unit, a bicycle unit, a less lethal munitions team, and a cut team. Line Unit officers deploy as a visible presence to deter criminal activity during a large-scale event and as a reactionary force in case of a disturbance. The less-lethal munitions team is comprised of officers who are specially equipped and trained to utilize impact munitions that are designed to protect Officers faced with violent crowds. Large scale demonstrations or rallies can overwhelm a single police department, so the Bellevue CDU team deploys in cooperation with officers from many other outside jurisdictions. The team also works cooperatively with the Seattle Police Department, the Valley Civil Disturbance Unit, and the Washington State Patrol CDU team.

In addition to assisting with several events in the city of Bellevue, the Bellevue CDU team deployed to Seattle to support the Seattle Police Department during the Immigration March, as well as the multiple rallies and protests that occur throughout that day.

The Community Academy is a twelve-week instructional curriculum designed to acquaint Bellevue residents and those who work in Bellevue with how the Bellevue Police Department operates. The program affords officers the opportunity to address myths and misconception about law enforcement and is an opportunity to interact with people on a more personal level. In 2018, the Community Services Unit hosted two community academy sessions. The purpose of the Community Police Academy is to develop relationships between the Police Department and the community-at-large by introducing residents to officers in a positive environment, and by giving residents a glimpse of the job that our officers perform every day. The three-month curriculum allows attendees to participate in a variety of interactive lessons and an opportunity to hear from subject matter experts

from each unit of the Bellevue Police Department. Some of the blocks of instruction include a ride-along with a patrol officer, the opportunity to experience scenarios at the virtual range, a chance to observe how K-9 officers and their dogs track suspects, as well as presentations from detectives to include an overview of recent high-profile cases. Many Community Police Academy graduates have gone on to become ambassadors for the Bellevue Police Department at community events, leaders of crime prevention efforts in their neighborhoods, and some to become a part of our award-winning police volunteer program.

Emergency Vehicle Operations instructors are a group of nine officers who have received specialized training from the Washington State Patrol on the safe and effective operation of police vehicles. Three of those instructors joined the team in October of 2018. Among the duties of the training team is the annual in-service training. This training is mandatory for all uniformed commissioned personnel and optional for the remainder of the department. In 2018, the training focused on slower speeds and backing scenarios, as well as the safe extraction of individuals from vehicles. In 2019, officers will have the opportunity to attend training at Pacific Raceways in Kent, Washington to focus on higher speed emergency driving. Additionally, instructors also provided quarterly remedial training to officers found to have been involved in preventable collisions. The instructors also conducted commentary drives for all police department volunteers that operate department vehicles. All volunteers passed their annual driving test.



2018 BELLEVUE POLICE DEPARTMENT STATISTICS



Hours Donated

6,400

Time donated by Bellevue Police volunteers

Parking infractions

3,200



Number of accessible parking infractions issued by parking enforcement personnel



Arrests

5,322

Number of arrests made in 2018

K-9 Unit

44



Number of suspects located and apprehended by Bellevue's three K-9 dogs.



Evidence Examined

1,298

Pieces of evidence examined by the forensics laboratory





Motorcycle Enforcement Officers
Chad Cummings and Rob Welty


TRAFFIC

The Bellevue Police Department Traffic Unit is made up of Collision Investigators, Motorcycle Officers, and two Parking Enforcement Officers. The unit's mission is to reduce vehicular accidents and injuries, and to facilitate the safe and expeditious flow of vehicular and pedestrian traffic by encouraging voluntary compliance with traffic regulations. This goal is accomplished through a combination of education, engineering, and enforcement. The Traffic Unit also includes a group of police volunteers who enforce fire zone and disabled parking violations. As with every unit within the Police Department, the Bellevue Police Department Traffic Unit continued to experience staffing challenges in 2018. The unit operated with a shortage of 70% of authorized staff for the Motorcycle Unit and 17-33% of authorized staff for the Collision Unit for the year. Despite those challenges, the Traffic Unit continued to provide exceptional public service to the citizens of Bellevue.

Members of the Traffic Unit responded to 889 traffic collisions in 2018, which was 53% of the 1,669 total reported collisions that occurred during the year. This included 228 collisions involving injury that were investigated by members of the unit. Our Collision Investigators also investigated two fatality traffic collisions, as well as numerous other serious injury and high-profile crash cases. Members of the Traffic Unit issued 6,283, or 76% of the 8,315 total officer-issued citations in the city.

The Motorcycle Unit was involved in providing traffic control and security at several major events throughout the year. These events included the Strawberry Festival, the Bellevue Family 4th event, the Bellevue Festival of the Arts, Snowflake Lane parades, and numerous other events requiring traffic control.

YEAR	TRAFFIC COLLISIONS	INJURY COLLISIONS	TRAFFIC FATALITIES
2014	1,776	527	4
2015	1,994	475	3
2016	1,900	410	1
2017	1,639	420	2
2018	1,669	454	2




In 2018 the Traffic Unit continued its partnership with the Washington Traffic Safety Commission (WTSC) and participated in several regional grant funded emphasis patrols. These included Target Zero (a statewide initiative to reduce fatalities from traffic accidents to zero by the year 2030), seat belt emphasis patrols, speed enforcement, cell phone and texting while driving enforcement, and DUI-focused patrols.

The unit's two Police Support Officers (PSO) are primarily responsible for enforcement of parking related offenses throughout the city. The parking PSOs handled over 900 online service requests and 500 calls for service, or a total of 1,400 parking complaints in 2018, resulting in the issuance of over 2,700 parking citations and 500 warnings. The parking PSOs also assisted with traffic control at several major incidents, as well as with transporting and processing arrestees during DUI emphasis patrols. Our PSOs are assisted by seven volunteers who enforce disabled parking regulations. These volunteers have received specialized training in disabled parking enforcement, and in 2018 donated over 1,000 hours of their time, resulting in the issuance of 500 disabled parking citations and over 500 warnings.

The City of Bellevue continues to utilize photo enforcement cameras to enhance safety by supplementing our enforcement efforts in three school zones and at four high-traffic intersections in the city for a total of nine cameras. The program resulted in 28,719 photo enforcement infractions being issued in 2018, a decrease of 2% when compared with 2017. The goal of the photo enforcement program is to change the behavior of drivers and reduce accidents caused by red light violations and potential injuries caused by drivers speeding in school zones.

2018 TRAFFIC ENFORCEMENT STATISTICS	
Traffic Service Requests	1,200
General Parking Infractions	2,705
Disabled Parking Infractions	500
Officer Issued Infractions	6,283
Photo Enforcement Infractions	28,719





Members of the Investigations Division

INVESTIGATIONS



John McCracken
Investigative Services Major

This year was filled with successes in the Investigations Section which included many major cases being successfully prosecuted, the identification and arrest of several robbery suspects, the identification and arrest of several residential and commercial burglary suspects, and the dismantling of several large-scale identity theft operations. This was

all accomplished due to the outstanding work of the Detectives that make up the Investigations and Special Operations Groups.

The Investigations Section is overseen by Major John McCracken, with the Investigations Group being led by Captain Travess Forbush, and the Special Operations Group being led by Captain Dave Sanabria. Both Captains are new to the Investigations Section and bring great skill and leadership to the teams. Detective Bonnie Basile joined the Major Crimes Unit, replacing Detective Steve Hoover who retired after many years with our department. We also welcomed five new detectives to our Special Assault Unit. The Special Operations Group welcomed one new sergeant and three new members.

The continued success of the Investigations Section is dependent on the quality personnel that make up our teams. These Detectives, Crime Analysts, Forensic Technicians, and others are dedicated to conducting quality investigations that will ultimately help to fulfill our department's mission to provide a safe place to live, work, and visit through quality law enforcement practices delivered by

dedicated professionals. We focus our efforts and resources to reduce crime, reduce the fear of crime, and enhance the quality of life for all who call Bellevue home.

The Violent Crimes Unit (VCU) consists of the Major Crimes Unit and the Special Assault Unit. The Major Crimes Unit (MCU) is comprised of four senior detectives who investigate serious felony crimes including homicides, robberies, sex crimes against adults, and felony assaults. MCU Detectives also investigate crimes against vulnerable adults. In 2018, MCU detectives investigated several serious assaults, including shootings and stabbings. MCU detectives also investigated bank robberies, armed and strongarm robberies, rapes and other sexual assaults.

The Special Assault Unit (SAU) is comprised of five detectives who investigate sexual and physical abuse of children. These detectives require a high level of specialized training and expertise due to the sensitive nature of their work. SAU detectives frequently work with Child Protective Services, the King County Prosecuting Attorney's Office, the King County Sexual Abuse Resource Center, and the Department of Early Learning.

The Property Crimes Unit is comprised of six detectives who investigate burglaries and other theft-related crimes, and one detective who specializes in technical operations. The unit collaborates with other regional law enforcement partners and the King County Prosecuting Attorney's Office to target career criminals that operate not only in our jurisdiction but also throughout the eastside. Two detectives are also trained as Arson Investigators and one is assigned to the FBI Safe Streets Task Force, which focuses on the swift apprehension of bank robbery suspects. Residential burglary cases continue to be the primary focus of this unit. Our Technical Operations Detective duties are multi-faceted,

and the detective assigned to that role routinely provides support to both the Investigations and Patrol Sections in addition to other city of Bellevue departments as needed.

The Economic Crimes Unit (ECU) is comprised of three full time detectives. The unit is tasked with taking on complex financial investigations such as embezzlement, falsification of financial documents, mortgage fraud, and insurance fraud. These types of investigations often require financial audits and records analysis. ECU Detectives work with many outside agencies, including the U.S. Attorney's Office, the U.S. Secret Service, Adult Protective Services and the King County Prosecuting Attorney's Office. In 2018, ECU Detectives investigated multiple complaints of financial exploitation of vulnerable adults. They also investigated and made arrests in large embezzlement cases and bank fraud cases.

The Crime Analysis Unit (CAU) consists of a civilian crime analyst, a civilian data analyst and a detective who serves in an analytical capacity and monitors sex offender registrations. This group is often the key to the identification of suspects in regional crime series that impact both Bellevue and neighboring jurisdictions. Unit members consistently provide support to detectives engaged in the multi-jurisdictional investigations. The unit collects, analyzes, develops and disseminates information and data related to crimes occurring in Bellevue. Tactically, this unit focuses on short-term, specific crime patterns that emerge and, when possible, link those patterns to known offenders. This unit also provides in-depth investigative support on individual high-profile cases or crime series, such as homicides, missing person cases, burglaries and bank robberies. In 2018, this section was responsible for compiling over 200 photo montages in support of active investigations, which assist in suspect identification leading to criminal charges being filed. The CAU works closely

with the Sector Captains to provide statistical and historical information about crime patterns and trends throughout the city. During monthly internal COMPSTAT meetings, strategic analysis is provided to Sector Captains and other command staff. This in-depth review of the data as well as current and historical trend analysis enables Sector Captains and others to determine the best way to deploy police resources to address issues. In addition to analyzing crimes occurring in the city, this unit maintains a regional focus, working closely with other analytical assets from neighboring law enforcement agencies. Critical to that mission is the hosting of an on-site Intelligence Analyst from the Washington State Fusion Center under the urban area security initiative of the Department of Homeland Security.

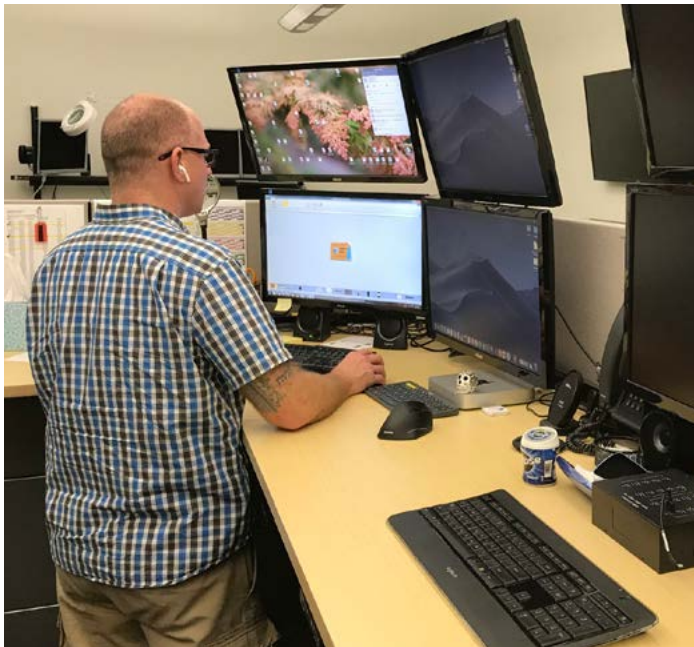
The Digital Forensics Laboratory consists of two full-time examiners who are responsible for recovering and examining data from computers and other electronic storage devices in order to use the data as evidence in criminal prosecutions. Digital Forensic Examiners use forensic tools and investigative methods to find specific electronic data, including internet history, word processing documents, images and other files. They use their technical skills to search for files and information that have been hidden, deleted or lost. Examiners help other detectives analyze data and evaluate its relevance to the case under investigation. Following data retrieval, the examiner writes up technical reports detailing how the computer evidence was discovered and the steps taken during the retrieval process. The examiner also gives testimony in court regarding the evidence collected and keeps current on new methodologies and forensic technology. Examiners also train other detectives and officers on proper procedures related to digital evidence.

The Digital Forensics Lab contains some of the most modern and sophisticated technology used today for the purposes of digital forensics. Two servers

within the lab are linked to four separate forensic computer systems. All evidence, hard drives and media cards such as thumb drives and SD cards are imaged using these computers and specialized forensic software is used to locate and document any files of evidentiary value. These systems are maintained and updated by the Digital Forensic Examiners themselves due to the sensitivity of the files stored on the hard drives and servers.

The lab also employs tools for the extraction of digital information from mobile devices such as cellular phones and tablet PCs. A dedicated digital camera system is also used in situations where our primary extraction tool is not successful or has no support for a particular electronic device. The camera system takes screenshots of the mobile device and then uses specialized software to create reports that can be provided to detectives to assist in their investigations.

The majority of requests handled by the examiners related primarily to persons' crimes, which include child exploitation, rape of a child, and disclosure of intimate images. The remainder of the requests dealt with cases related to death investigations, robbery, domestic violence, theft and narcotics violations.



Detective Carter works in the Digital Forensics Laboratory

The Bellevue Police Forensic Evidence

Laboratory is staffed by a Laboratory Manager and a Forensic Technician. The lab provides forensic identification services, including latent fingerprint development and identification. The lab also collects and preserves biological and trace evidence. The Bellevue lab also assists other law enforcement agencies on a case-by-case basis. The Bellevue lab works in cooperation with the King County Regional Automated Fingerprint Identification Program and the Washington State Patrol Crime Laboratory system.

In 2018 the forensic lab received 493 laboratory examination requests, 1,298 pieces of evidence were analyzed, and 88 latent print case identifications were made. This highlights the critical role evidence plays in the resolution of criminal offenses. Many of these pieces were directly responsible for the identification of unknown offenders across a wide range of crimes.

The primary service of the forensic lab is to provide timely and reliable information to investigating officers and detectives. Evidence processing techniques include physical, chemical, and fluorescent development of latent fingerprints. Potential suspects are generated by searching unknown latent fingerprints in the King County Regional, Western Identification Network, and the FBI's Next Generation Identification fingerprint databases. Biological and trace evidence is collected in their lab to facilitate a quicker response from the Washington State Patrol Crime laboratory.

The lab assists in the test firing of guns used in crimes and submits the cartridge casings to the NIBIN (National Integrated Ballistic Identification Network). They also submit shoe impressions collected at crime scenes to SICAR (Shoeprint Image Capture and Retrieval) database. Significant case information was obtained from these databases in 2018.

The forensic lab helps facilitate training for our Crime Scene Investigators, officers, and detectives. Twice a year lab personnel instruct the Community Police Academy and Bellevue Essentials classes about the role of the Bellevue forensics lab. Their outreach this year also included the demonstrations at multiple local high schools, the Bellevue Police Foundation's annual breakfast, a mock crime scene exercise at Bellevue International School, and at the Ardmore Elementary School science fair.

Special Operations Group

The Special Operations Group (SOG) was formed in July of 2016 by combining units from the former Eastside Narcotics Task Force, Patrol, and Investigations. The combined group was created to facilitate mutual support and coordination among units with similar operational methods, training, and equipment needs. The group consists of 12 detectives, two sergeants, and a captain, as well as a detective assigned to the Joint Terrorism Task Force. Collectively, these personnel bring a vast amount of experience to investigations, proactive practices, and are viewed as regional leaders in proactive law enforcement. All members of the group actively engage in community meetings and outreach.

The Narcotics Unit reduces the number of drug dealers in our community, disrupts and dismantles drug trafficking organizations, reduces the influence that drugs have in crimes committed and their negative impacts to our community, and makes drug dealing in Bellevue less profitable. The Narcotics Unit consists of three detectives when fully staffed. In 2018, the unit continued to see a steady presence of heroin and methamphetamine, as well as a rise in Fentanyl, an extremely dangerous synthetic narcotic. Detectives participated in several investigations to combat this rise, including one multi-state investigation involving a local Fentanyl dealer who was later tied to multiple

controlled substance related homicides in Oregon and Washington. Other cases investigated in 2018 involved drug dealing impacting neighborhoods and illegal and unlicensed marijuana grow operations. Also, detectives partnered with Renton Police to investigate and arrest a drug runner for a mid-level heroin dealer operating on the eastside. This investigation, arrest, and subsequent search warrants resulted in the seizure of almost a kilogram of heroin and \$6,000 in cash.

The Special Enforcement Team (SET) works proactively to reduce crime in the City of Bellevue through traditional and innovative means. The unit is flexible and responsive to shifts in crime trends. Members of the team assist other department units and outside law enforcement agencies in targeting repeat offenders. The Special Enforcement Team consists of six detectives and a sergeant when fully staffed. In 2018, the team continued to identify, locate and arrest suspects believed to be responsible for a variety of property and persons crimes committed in the city. In one case, unit detectives, following up on a lead involving a report of stolen bicycle being sold online, located and arrested a prolific car thief and burglar. This case resulted in over 20 new charges ranging from possession and trafficking in stolen property, residential burglary, and unlawful possession of firearms. Additionally, less than 72 hours after the initial arrest in that case, detectives identified, located, and arrested a previously unidentified group that was suspected of committing multiple violent robberies in the Crossroads area of Bellevue. In addition, SET Detectives investigated multiple Organized Retail Theft (ORT) cases. Suspects in these cases operated across jurisdictional boundaries and the cases required an extensive amount of investigation and follow-up that eventually led to successful prosecutions.



Brian Orr manages the Forensics Laboratory

The Vice Unit reduces prostitution related crimes in the City of Bellevue through the identification and intervention of sex trafficking victims, enforcement of prostitution related criminal enterprises, and by reducing the demand for prostitution related services. There are two detectives assigned to the unit when fully staffed. In 2018, the unit continued to actively locate and contact prostitutes advertising their services through various online sex trafficking websites. Detectives offered prostitutes support resources and worked with hotel and property managers to educate them about the activities going on at their properties and assist with trespassing individuals when necessary. Many sex workers are victims of serious felony crimes that are often not reported. In one case, Detectives identified five suspects of an armed robbery involving a prostitute who was operating out of a local hotel they had under surveillance. When the crime was later reported, detectives were able to use the information they gained from their surveillance to lead to the arrest and prosecution of those violent offenders.

The Joint Terrorism Task Force Detective works with our federal partners to disrupt and prevent terrorist acts and apprehend individuals who may commit or plan to commit such acts that affect United States interests. There is one detective assigned to this position and currently he is also the police representative to the Threat Management Team (TMT) at the City of Bellevue. The TMT responsibilities include preventing workplace violence by assessing the danger or harm that may result from a threat to city employees and vendors or guests at city facilities and operating an appropriate risk management plan. In 2018, the JTTF detective assisted in 24 cases with an Eastside nexus and conducted over 20 threat assessments for the TMT.



Members of the Records Unit manage all case reports and records generated by the department

ADMINISTRATIVE SERVICES



Jonathan Hoffman
Administrative Services Major

The Administrative Services Section is the “behind the scenes” section that is vital to the smooth operation of the Bellevue Police Department and represents the public face of the department in the form of the records unit professionals and volunteers that provide essential services to the community. The section consists of the Personnel Services Unit

(Training and Hiring), Courts and Custody Unit, Property and Evidence, the Records Unit and our Volunteer Program.

The Personnel Services Unit continues to be very busy, successfully hiring 24 new employees in 2018, an increase from 20 new employees in 2017.

The Records section completed a staggering 6,634 Public Disclosure Requests, an increase from 5,336 in 2017, along with handling 1,187 applications for Concealed Weapons Permits, an increase from 970 in 2017.

In 2018 the Property and Evidence Unit processed over 9,806 evidentiary items during intake along with disposing of 7,476 items. The unit manages nearly 80,000 pieces of property and evidence in total.



RECORDS STATISTICS	
Public Disclosure Requests	6,634
Persons Fingerprinted	823
Active NCIC Records Validated	1,355
Domestic Violence Protection Orders Processed	1,084
Gun Purchases/Transfers	1,568
Concealed Pistol Licenses	1,187
Record Checks: CJIS Security Background Checks	168
Expungements/Vacates	42

Includes protection orders, missing persons, stolen vehicles & boats, stolen license plates, stolen firearms, stolen parts, violent persons, and identity theft victims)

The Courts and Custody Unit is responsible for prisoner processing and transport between Bellevue District Court and three local contract jails.

Our police volunteer program continues to be a success and model for other agencies, and our volunteers donated nearly 6400 hours of their time to the Department in 2018. The Administrative Services Section is honored to support the mission of the City of Bellevue and to serve the community by providing the best possible services to the Bellevue community.

The Records Unit provides the public with non-emergency services and is responsible for the management of all case reports and public records created by the department. Walk-in services include processing requests for local clearance letters, fingerprinting services, concealed pistol license (CPL) applications, firearm dealer license applications, and requests for information on services provided by other departments or agencies. The Records Unit is also responsible for fulfilling public records requests. Requests for concealed pistol licenses and public records requests continue to increase each year. Records personnel are responsible for fingerprinting applicants for concealed pistol licenses, as well for as all police and city contract employees. The records unit also provides support services to the Operations and Investigations Divisions, including assistance with criminal background checks.

Information management continues to be one of the key responsibilities of the Records Unit. The retention and release of police records is governed

by state statute. Thousands of requests for the records we create and retain are received annually from residents, attorneys, insurance companies, probation officers, prosecutors, and other criminal justice agencies. All domestic violence orders (orders of protection, no contact orders, and anti-harassment orders) received for service and/or entry into the Washington State and National Crime Information Computer are processed by the unit. Orders for protection that we receive for service and warrants issued by Bellevue District Court are entered within 72 hours of receipt.

Throughout the year, Staff Support personnel continue to focus on serving the community with professionalism and a high level of customer service to both our internal customers as well as members of the public. Our vision: Quality – Efficient – Support.

The Courts & Custody Unit (CCU) is responsible for managing our holding facilities at Bellevue City Hall and Bellevue District Court. The unit manages all City of Bellevue in custody prisoners, and all paperwork associated with the District, Juvenile, and Superior Courts. In 2018, the unit continued to provide seven day a week Police Support Officer coverage to assist the Patrol Unit. The Courts and Custody Unit Sergeant is responsible for supervising unit employees and managing unit operations. The CCU Sergeant manages and monitors prisoners who are being transported to and from court appearances, serving jail sentences, assigned to electronic home detention, or on work release. The sergeant also analyzes the daily jail population and the location of currently detained inmates to ensure the department is utilizing the most cost-effective incarceration options. The sergeant is the primary liaison between our contract jails, the District Court and other supporting agencies. In 2018 Bellevue District Court implemented a video arraignment process which significantly reduced the need to transport prisoners from the jails to court. This

change created significant efficiencies in the Courts and Custody Unit operations. The city was able to restructure jail contracts, resulting in a savings of several thousand dollars per month. This change also freed up staff time for other duties in support of the police department's core function.

The Court Liaison Officer (CLO) tracks all cases referred for filing and organizes follow-up work as needed, acts as a focal information source for department personnel who request case or court information, and delivers completed cases for officers and investigators to District, Juvenile, and Superior Courts. The CLO is also responsible for entering and delivering all subpoenas delivered to the Police Department. When court is cancelled, or officers are needed in court without subpoena notification, the CLO makes every effort to assist the prosecutors in ensuring the officer arrives at court in a timely manner. The CLO's additional responsibilities include conducting background investigations to assist the Personnel Services Unit with hiring new officers. In 2018 the Bellevue City Council approved the civilianization of the CLO position. This change will free up a commissioned officer fill existing vacancies and will result in a significant savings in employee costs for the position. We anticipate hiring the new civilian court liaison in early 2019.

Police Support Officers (PSOs) are responsible for prisoner processing and transports to and from our court and the three contract jails. They assist police officers by picking up and transporting prisoners from the field and providing booking assistance to help get our police officers back in the field as soon as possible. They are also responsible for keeping our holding facility fully stocked and in working order. In 2018, PSO's provided seven day a week assistance to the patrol unit, participated in the training of all newly hired officers, and assisted with completing CALEA proofs and standards.

The Property and Evidence Unit manages the intake, storage, and disposal of property and evidence collected by the Bellevue Police



Officer Chris Pierce was one of 15 entry level officers hired in 2018

Department during public safety operations. The Property and Evidence Unit works closely with patrol officers, detectives, and records personnel by providing assistance and information concerning the handling and booking of evidence. Unit staff provide support during search warrants and other events which require the handling of large quantities of evidence or property. The unit consists of one civilian supervisor and two civilian technicians. The unit ensures all booked evidence and property is tracked and that storage complies with State and Federal regulations. Procedures are continually updated to meet industry standards and innovative methods are applied to improve efficiency and service. The unit manages the test firing of booked firearms and the subsequent entry of casings into a National Ballistics System (IBIS/NIBIN).

During 2018, the property room took in over 9,806 pieces of booked evidence and property and disposed of over 7,476 items. The Property and Evidence Unit is responsible for the storage and tracking of nearly 80,000 pieces of property. In 2018 the Property and Evidence Unit took on the task of reviewing every sexual assault kit, or "rape kit", in their custody. A complete inventory was conducted, and the status of each case was confirmed. The review confirmed that every kit was properly logged and submitted for testing per Washington State Patrol guidelines and state law, ensuring that none of the involved victims were unduly denied justice in their cases due to mishandling of evidence.

The Personnel Services Unit (PSU) Staffing shortages continue to be a significant challenge for law enforcement across the country, and Bellevue Police Department is no exception. Recruitment and hiring is one of the main missions of the Personnel Services Unit. In 2018 PSU changed its hiring processes to increase staff efficiencies and reduce the time from initial job application to job offer. The changes made it possible to identify and eliminate non-viable applicants earlier in the process, enabling staff to spend more time on viable candidates. Because of these efficiencies, the number of entry level candidate background investigations completed increased from 59 in 2017 to 117 in 2018. This is nearly a 100% increase. Efficiencies were also identified in the hiring process for experienced police officers. These changes increased the number of lateral officers that entered the background process. In 2018, the unit conducted 28 background investigations on experienced officer applicants, up from 18 in 2017.

In 2018 Bellevue Police Department hired 15 Entry level officers, four experienced officers, and seven civilian staff.

During 2018, there were a total of 20 commissioned officer separations due to retirement and other reasons. With the hiring of 19 officers, along with existing vacancies, at the end of 2018 there

remained 16 commissioned staff vacancies. PSU staff are committed to bringing that number down to 0 by the end of 2019.

In addition to the efficiencies created in the hiring process, in late 2018 the Bellevue Police Department introduced a \$16,000 hiring bonus for experienced police officers. This bonus program has significantly increased the number of applications received from experienced police officers.

In May of 2018, the department's recruiter, Detective James Brack was promoted to Sergeant and transferred to patrol. Officer's Chad Cummings and Craig Hanaumi continued the recruiting efforts in addition to their regular assigned duties.

During the year, new hire information sessions were provided to those interested in becoming a Bellevue Police Officer. There were 218 prospective applicants that attended these sessions either in person or by conference call. There were 150 tours of the police department provided to both entry level and lateral applicants. Potential applicants at certain stages of the pre-employment background were provided the opportunity to ride with our Patrol Officers. There were 97 applicants that went on these ride-alongs.

Officer Craig Hanaumi, who has been featured on the Today Show as the "Skateboarding Officer", worked hard to increase BPD recruiting's social media presence. Officer Hanaumi posted over 20 recruiting videos on Facebook which resulted in over 100,000 views. Also, there has been an increase of over 4000% in "likes" to recruiting posts. Because of these outreach efforts, we have received applicants from officers from across the nation.

The department established a Recruiting Team tasked with attending events and job fairs. During the year, the team attended over 20 such events, both in state and throughout the country. In February, the team attended the Southwest

Recruiting Conference in Phoenix, Arizona. In April, the team attended the Green River College job fair, and in June they attended the Pacific Northwest Women in Law Enforcement event.

Defensive Tactics (DT) and Use of Force The safety of the public and our officers are among the highest priorities of the Personnel Services Unit. In 2018, each Bellevue Police Officer received an average of 145.5 hours training in a variety of disciplines. The critical areas of training included confrontation de-escalation techniques, certification in TASER and Vascular Neck Restraint (VNR), along with the yearly required pistol and patrol rifle recertification. Additionally, the defensive tactics training team conducted quarterly defensive tactics and integrated force training, providing all officers and detectives with eight hours of practical hands-on training in the use of control and defensive tactics. At the end of the year, the department went through four hours of intensive force scenario training. This type of training, also known as "reality-based training" utilizes realistic scenarios and situations involving role players dressed in impact resistant suits to simulate what officers might face in a real-life event on the street. Training emphasized realistic de-escalation, proper use of force under various lighting conditions, using control techniques, as well as the use of a TASER, and/or pistol, when justified. All officers and detectives completed five hours of dynamic firearms training that included movement, shooting, addressing multiple targets, and reloading. The defensive tactics instructors also assisted with emergency vehicle operations training this year, teaching a block on high risk vehicle extractions. All armed personnel also completed two separate comprehensive firearms qualifications in May and November.

Newly hired officers with no experience (entry level) receive 720 hours of training from the State's

Basic Law Enforcement Academy. Additionally, the department provided each of our 15 entry level officers hired in 2018 with an additional 47 hours of defensive tactics training, 62 hours of firearms training, and eight hours of TASER training. Four lateral officers (experienced officers that are new to BPD) received 25 hours of defensive tactics training, 46 hours of firearms training, and eight hours of TASER training. New hire training continues to increase each year, requiring more PSU resources than ever before.

HIRING AND TRAINING

Officer and Non-Commissioned Staff Hiring



year	Officers	Non-Commissioned	2018
2014	24	3	26 TOTAL
2015	18	0	
2016	15	6	
2017	19	5	
2018	19	7	

Training Hours for Commissioned Officers

year	Hours Trained	2018
2014	24,677	24,593 HOURS
2015	40,077	
2016	34,392	
2017	20,749	
2018	24,593	



Average Hours of Training per Officer **145**
HOURS

Volunteers

The Bellevue police volunteer program celebrated its 24th year in 2018. Police volunteers served close to 6,400 hours during the year, supporting programs and operations in every section of the Police Department. Volunteers staff the front desk of our Factoria and Crossroads substations, provide disabled and fire lane parking enforcement throughout the city, shuttle police vehicles to and from the city's vehicle service center, retrieve abandoned bicycles, assist detectives with pawned property investigations, provide informational resources to burglary and identity theft victims, and staff special events during the year such as National Drug Takeback Days and the Bellevue Arts Festival.



Parking Enforcement Volunteers



2018 Retirees

Not pictured: Steve Lynch, Yong Lee

AWARDS AND PROMOTIONS



Civilian Employee of the Year
Heather McGrath



Officer of the Year
Russ Kelley



Sergeant of the Year
Joe Engman

Years of Service Awards

30 Years

Assistant Chief Patrick Arpin
Detective Frank Nunnelee

25 Years

Captain Marcia Harnden
Sergeant Mark Jordan
Detective Tim Stoutt
Officer Greg Neese
Lead Police Support Specialist Lisa Nomura
Police Support Accounting Associate Lisette Roberts

20 Years

Officer Brad Knudtsen
Officer Dennis Carlson

15 Years

Major Andrew Popochock
Senior Administrative Assistant Jean Morgan
Officer Raphael Park
Detective Will Hallifax

2018 Retirements

Pat Spak – 28 years
Curt Mclvor – 27 years
Lisa Patricelli – 28 years
Dion Robertson – 28 years
Steve Lynch – 32 years

Molly McBride – 40 years
Yong Lee – 27 years
Steve Hoover – 29 years

2018 Promotions

Carl Kleinknecht to Assistant Chief
Jon Hoffman to Major
Andrew Popochock to Major
Dave Sanabria to Captain
Mark Tarantino to Captain
Rob Spingler to Captain
Casey Hiam to Sergeant
Shelby Shearer to Sergeant
James Brack to Sergeant
Darryl McKinney to Sergeant
Dave Rivera to Sergeant
Tai Wotherspoon to Corporal
Roger Castellanos to Corporal
Joseph Prendez to Corporal
Jean Morgan to Senior Administrative Assistant
Lynn Boerner to Lead Police Data Quality Specialist
Kristina Galloway to Lead Police Support Specialist



VISION

WE WILL STRIVE TO DELIVER THE HIGHEST STANDARD OF POLICE SERVICES TO THE PUBLIC BY WORKING IN PARTNERSHIP WITH THE COMMUNITY, EMBRACING DIVERSITY, BUILDING TRUST AND EMBODYING TRANSPARENCY.

MISSION

TO PROVIDE A SAFE PLACE TO LIVE, WORK AND VISIT THROUGH QUALITY LAW ENFORCEMENT PRACTICES DELIVERED BY DEDICATED PROFESSIONALS.

WE FOCUS OUR EFFORTS TO REDUCE CRIME, REDUCE THE FEAR OF CRIME, AND ENHANCE THE QUALITY OF LIFE FOR ALL WHO CALL BELLEVUE HOME.

GUIDING PRINCIPLES

RESPECT INTEGRITY ACCOUNTABILITY SERVICE





Bellevue
Police Department