



SUMMARY OF FINDINGS

Below is a summary of the data we collected on **168th Avenue NE south of Northup Way** between 10/23/2017 and 10/29/2017.



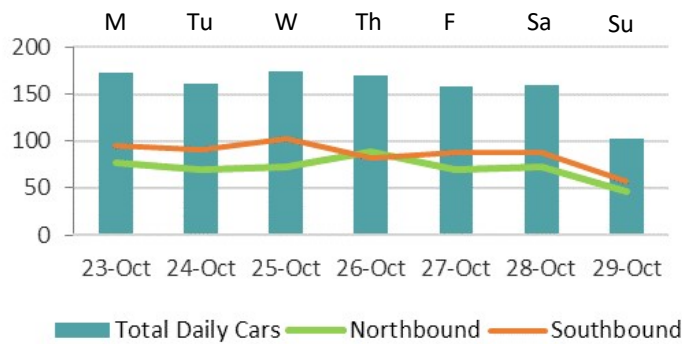
ROADWAY CHARACTERISTICS

168th Avenue NE is located south of Northup Way and north of NE 12th Street. 168th Ave NE is a local street approximately 400 ft long and 28 ft wide. The two-lane road has no sidewalk on either sides of the road. A section of sidewalk is at the northeast corner of 168th Avenue NE and NE 12th Street. The speed limit is 25 mph. STOP sign is installed on 168th Ave NE intersections turning onto Northup Way. Ivanhoe Performing Arts Theater and Park has pedestrian and maintenance car access from 168th Avenue NE.



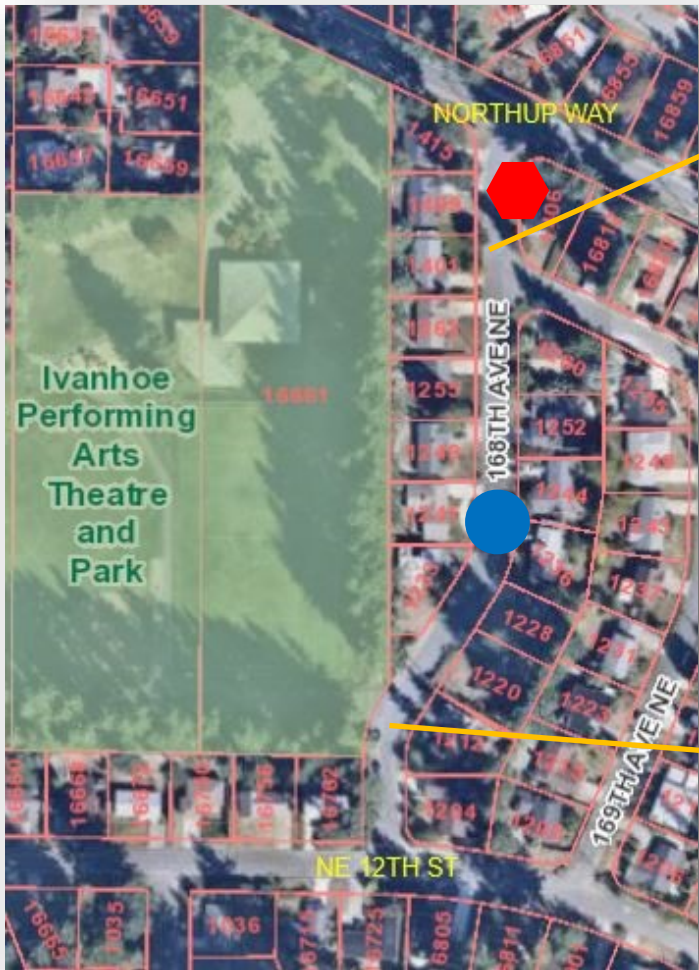
DAILY TRAFFIC

The Mid-Week Average on 168th Avenue NE is **168** cars per day. Mid-Week Average includes data between Tuesday and Thursday.



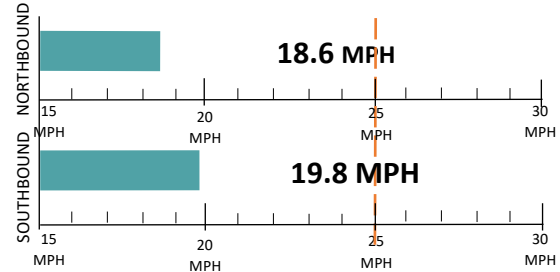
COLLISION HISTORY

A three-year collision study was conducted along 168th Avenue NE from NE 12th Street to Northup Way. There were no collisions reported.



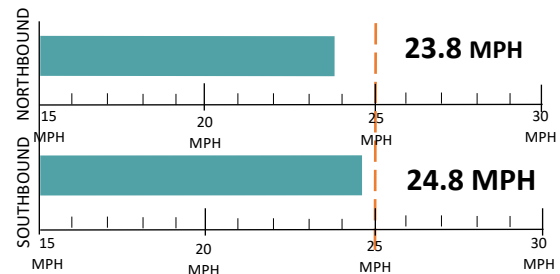
SPEED STUDY

Average Speeds



85th% Speed

85% of vehicles were traveling at or below this speed.



Speed Limit Car speeds on 168th Avenue NE



168th Avenue NE facing south.



168th Ave NE facing north.

LEGEND



Speed Study Location



STOP Sign Location





RECOMMENDATIONS

Below are our recommendations for 168th Avenue NE based on the field reviews, data collection, and engineering analysis. More details on these recommendations are outlined in the **Residential Traffic Guidebook** (BellevueWA.gov/ResidentialTrafficGuidebook). By educating the community and encouraging safe driving, we can begin to change driver behavior and reduce vehicle speeds.

-  EDUCATE THE COMMUNITY
-  REDUCE EXCESSIVE VEHICLE SPEEDS
-  HEIGHTEN SCHOOL ZONE AWARENESS
-  IMPROVE PEDESTRIAN AND BICYCLE SAFETY



SIGN & PLEDGE PROGRAM

This program involves lending communities portable signs that encourage motorists to respect the neighborhood, drive responsibly, and drive 25 mph. The signs are moved by community volunteers from place to place throughout the neighborhood every few days. The second part of the program is a neighborhood pace car program. Residents who pledge to drive responsibly and drive the speed limit on all neighborhood streets receive magnetic bumper stickers or window clings to place on their vehicle. As these motorists drive 25 mph on residential streets, they set the pace for drivers behind them.



RADAR DOLLY

You can borrow and place a radar dolly on your street for up to two weeks. This unit gives motorists feedback on the speed at which they are driving on a digital reader board, encouraging them to obey the speed limit. Should you like to borrow the radar dolly, please request it by calling (425) 452-6457 or sign up on BellevueWA.gov/RadarDolly. Once we receive a request, City staff will contact you to make arrangements for both the drop-off and pick-up of the radar dolly at your home.



TRAFFIC ENFORCEMENT

The Transportation Department works closely with the Bellevue Police Department to enforce speed limits and other traffic laws in neighborhoods. Using key traffic data provided by Transportation staff, officers focus their scheduled patrols on the times and places where speeding most often occurs. Typically, targeted enforcement occurs during a one week timeframe. Enforcement is also available by request. To request enforcement, go to <https://bellevuewa.gov/tsr> or call (425) 577-5656.

MORE INFORMATION

Find out more about these recommendations in our **Residential Traffic Guidebook** or by visiting the Neighborhood Traffic Safety Services website.

GUIDEBOOK: BellevueWA.gov/ResidentialTrafficGuidebook

WEBSITE: BellevueWA.gov/NTSS