



SUMMARY OF FINDINGS

Below is a summary of the data we collected on 166th Place NE north of NE 20th Street between 10/23/2017 and 10/29/2017.



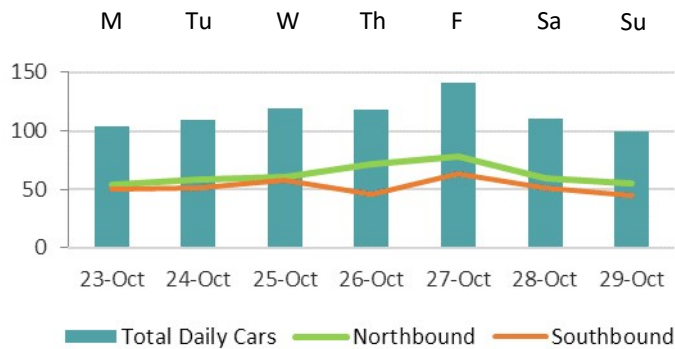
ROADWAY CHARACTERISTICS

166th Place NE is located north of NE 19th Place and south of NE 23rd Street. 166th Place NE is a local street approximately 1050 ft long and 27 ft wide. The two-lane street has no sidewalk on either side of the street. The legal speed limit is 25 mph.



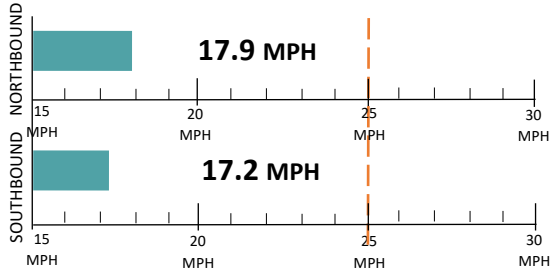
DAILY TRAFFIC

The Mid-Week Average on 166th Place NE is 115 cars per day. Mid-Week Average includes data between Tuesday and Thursday.



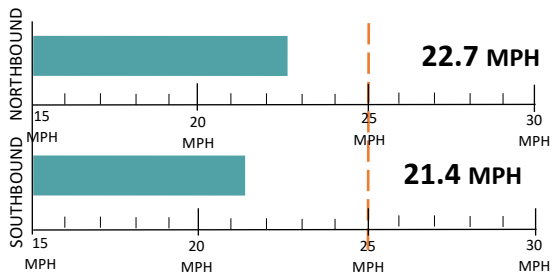
SPEED STUDY

Average Speeds



85th% Speed

85% of vehicles were traveling at or below this speed.

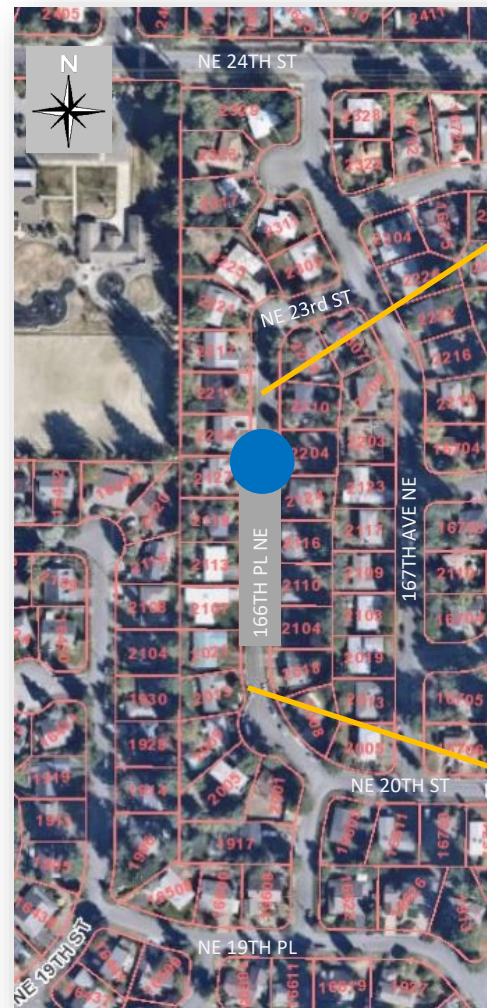


Speed Limit Car speeds on 166th Place NE



COLLISION HISTORY

A three-year collision study was conducted along 166th Place NE from NE 19th Place to NE 23rd Street. There were no collisions reported.



166th Place NE facing south.



166th Place NE facing north.

LEGEND



Speed Study Location



RECOMMENDATIONS

Below are our recommendations for 166th Place NE based on the field reviews, data collection, and engineering analysis. More details on these recommendations are outlined in the **Residential Traffic Guidebook** (BellevueWA.gov/ResidentialTrafficGuidebook). By educating the community and encouraging safe driving, we can begin to change driver behavior and reduce vehicle speeds.

-  EDUCATE THE COMMUNITY
-  REDUCE EXCESSIVE VEHICLE SPEEDS
-  HEIGHTEN SCHOOL ZONE AWARENESS
-  IMPROVE PEDESTRIAN AND BICYCLE SAFETY



SIGN & PLEDGE PROGRAM

This program involves lending communities portable signs that encourage motorists to respect the neighborhood, drive responsibly, and drive 25 mph. The signs are moved by community volunteers from place to place throughout the neighborhood every few days. The second part of the program is a neighborhood pace car program. Residents who pledge to drive responsibly and drive the speed limit on all neighborhood streets receive magnetic bumper stickers or window clings to place on their vehicle. As these motorists drive 25 mph on residential streets, they set the pace for drivers behind them.



RADAR DOLLY

You can borrow and place a radar dolly on your street for up to two weeks. This unit gives motorists feedback on the speed at which they are driving on a digital reader board, encouraging them to obey the speed limit. Should you like to borrow the radar dolly, please request it by calling (425) 452-6457 or sign up on BellevueWA.gov/RadarDolly. Once we receive a request, City staff will contact you to make arrangements for both the drop-off and pick-up of the radar dolly at your home.

MORE INFORMATION

Find out more about these recommendations in our **Residential Traffic Guidebook** or by visiting the Neighborhood Traffic Safety Services website.

GUIDEBOOK: BellevueWA.gov/ResidentialTrafficGuidebook

WEBSITE: BellevueWA.gov/NTSS