



SUMMARY OF FINDINGS

Below is a summary of the data we collected on **NE 13th Street between 179th Avenue NE and 180th Avenue NE** between 9/11/2017 and 9/17/2017.



ROADWAY CHARACTERISTICS

ROAD SPECIFICATIONS

NE 13th Street is a 34 ft wide street with parking allowed on both sides of the street. There are also sidewalks on both sides of street.

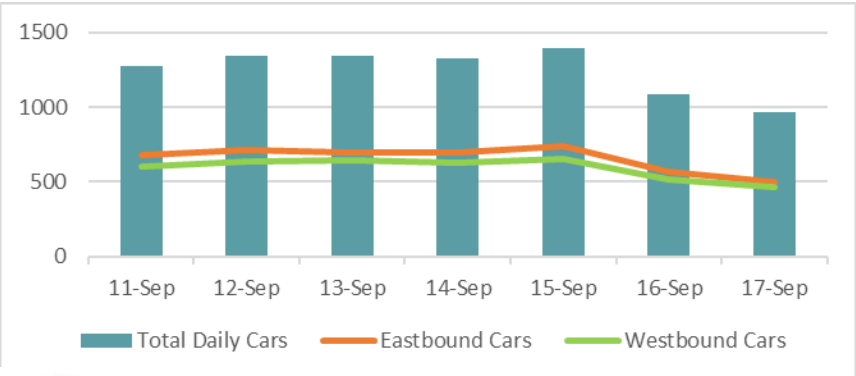
RESIDENTIAL STREET

NE 13th Street is a residential street in the Tam O’Shanter neighborhood. There are numerous residents in this neighborhood who use NE 13th Street to access their homes.



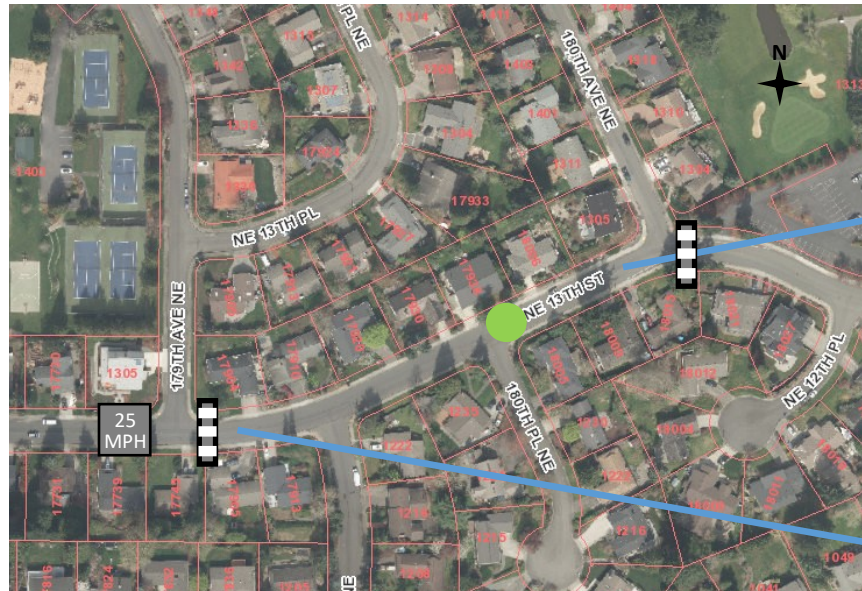
DAILY TRAFFIC

The Mid-Week Average on NE 13th Street is 1,338 cars per day.
Mid-Week Average includes data between Tuesday and Thursday.



COLLISION HISTORY

A three-year collision study was conducted along NE 13th Street between 179th Avenue NE and 180th Avenue NE. There were no reported crashes.



LEGEND

Speed Study Location

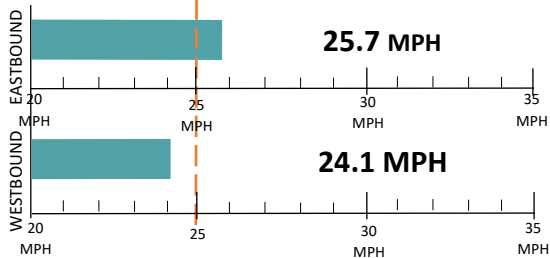
Speed Limit Pavement Marking

Raised Crosswalk



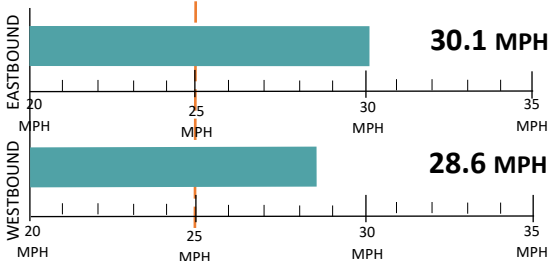
SPEED STUDY

Average Speeds



85th% Speed

85% of vehicles were traveling at or below this speed.



Speed Limit Car Speeds on NE 13th Street



NE 13th Street looking west



NE 13th Street looking east

RECOMMENDATIONS

Below are our recommendations for NE 13th Street based on the field reviews, data collection, and engineering analysis. More detail on these recommendations are outlined in the **Residential Traffic Guidebook** (Bellevuewa.gov/ResidentialTrafficGuidebook). By educating the community and encouraging safe driving, we can begin to change driver behavior and reduce vehicle speeds.



EDUCATE THE
COMMUNITY



REDUCE EXCESSIVE
VEHICLE SPEEDS



IMPROVE
PEDESTRIAN AND
BICYCLE SAFETY



SIGN & PLEDGE PROGRAM

This program involves lending communities portable signs that encourage motorists to respect the neighborhood, drive responsibly, and drive 25 mph. The signs are moved by community volunteers from place to place throughout the neighborhood every few days. The second part of the program is a neighborhood pace car program. Residents who pledge to drive responsibly and drive the speed limit on all neighborhood streets receive magnetic bumper stickers or window clings to place on their vehicle. As these motorists drive 25 mph on residential streets, they set the pace for drivers behind them.



RADAR DOLLY

You can borrow and place a radar dolly on your street for up to two weeks. This unit gives motorists feedback on the speed at which they are driving on a digital reader board, encouraging them to obey the speed limit. Should you like to borrow the radar dolly, please request it by calling (425) 452-6457 or sign up on Bellevuewa.gov/RadarDolly. Once we receive a request, City staff will contact you to make arrangements for both the drop-off and pick-up of the radar dolly at your home.



TRAFFIC ENFORCEMENT

The Transportation Department works closely with the Bellevue Police Department to enforce speed limits and other traffic laws in neighborhoods. Using key traffic data provided by Transportation staff, officers focus their scheduled patrols on the times and places where speeding most often occurs. Typically, targeted enforcement occurs during a one week timeframe. Enforcement is also available by request. To request enforcement, go to bellevuewa.gov/tsr or call (425) 577-5656.

MORE INFORMATION

Find out more about these recommendations in our **Residential Traffic Guidebook** or by visiting the Neighborhood Traffic Safety Services website.

GUIDEBOOK: BellevueWA.gov/ResidentialTrafficGuidebook

WEBSITE: BellevueWA.gov/NTSS