



SUMMARY OF FINDINGS

Below is a summary of the data we collected on **NE 11th Place between 148th Avenue NE and 151st Place NE** from 6/13/2017 to 6/19/2017.



ROADWAY CHARACTERISTICS

ROAD SPECIFICATIONS

NE 11th Place is a 20ft wide road. There are no sidewalks on either side of the road.

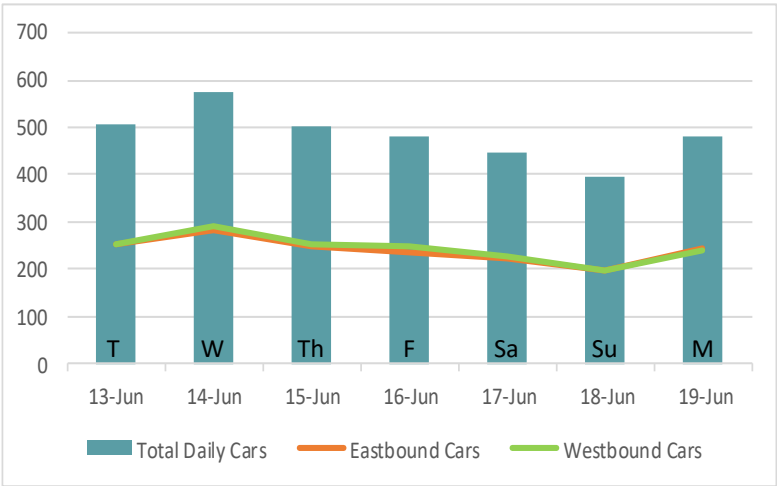
RESIDENTIAL STREET

NE 11th Place is a residential street in the Fox Glen neighborhood. Residents must use NE 11th Place to enter and exit the neighborhood of approximately 70 homes.



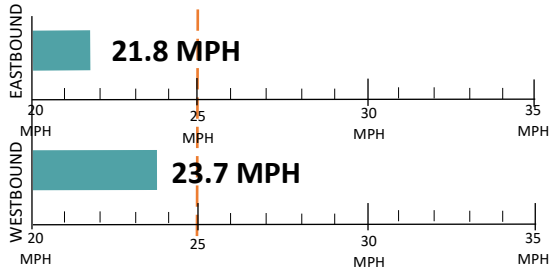
DAILY TRAFFIC

The Mid-Week Average on NE 11th Place is **526** cars per day.  
Mid-Week Average includes data between Tuesday and Thursday.



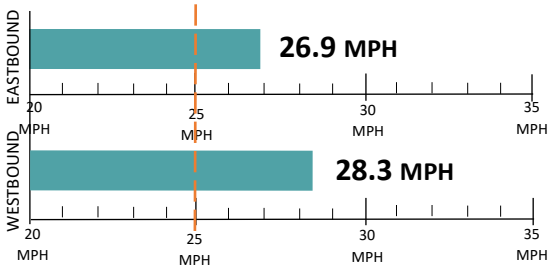
SPEED STUDY

Average Speeds



85th% Speed

85% of vehicles were traveling at or below this speed.



Speed Limit      Car Speeds on NE 11th Place



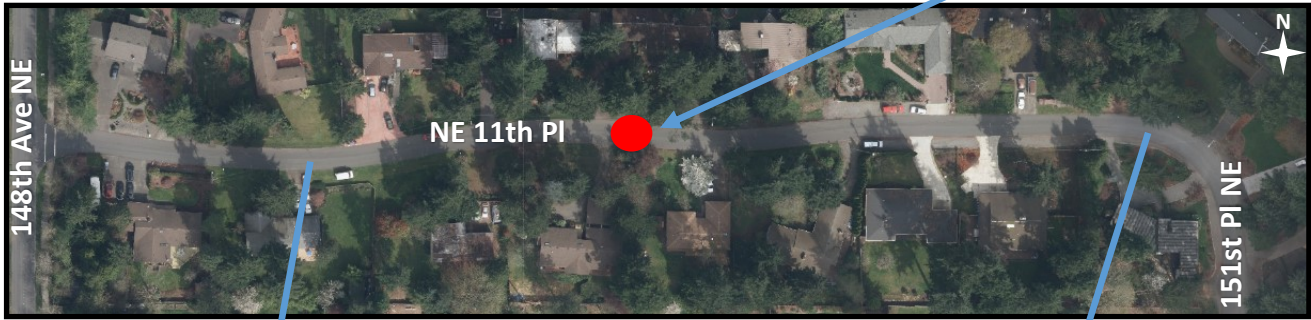
COLLISION HISTORY

A three-year collision study was conducted along NE 11th Place between 148th Avenue NE and 151st Place NE. There were no reported collisions.



FIELD REVIEW

Speed Study Location



NE 11th Place  
looking eastbound



NE 11th Place  
looking westbound





# RECOMMENDATIONS

Below are our recommendations for NE 11th Place based on the field reviews, data collection, and engineering analysis. More detail on these recommendations are outlined in the **Residential Traffic Guidebook** ([BellevueWA.gov/ResidentialTrafficGuidebook](http://BellevueWA.gov/ResidentialTrafficGuidebook)). By educating the community and encouraging safe driving, we can begin to change driver behavior and reduce vehicle speeds.



EDUCATE THE COMMUNITY



REDUCE EXCESSIVE VEHICLE SPEEDS



IMPROVE PEDESTRIAN AND BICYCLE SAFETY



## SIGN & PLEDGE PROGRAM

This program involves lending communities portable signs that encourage motorists to respect the neighborhood, drive responsibly, and drive 25 mph. The signs are moved by community volunteers from place to place throughout the neighborhood every few days. The second part of the program is a neighborhood pace car program. Residents who pledge to drive responsibly and drive the speed limit on all neighborhood streets receive magnetic bumper stickers or window clings to place on their vehicle. As these motorists drive 25 mph on residential streets, they set the pace for drivers behind them.



## RADAR DOLLY

You can borrow and place a radar dolly on your street for up to two weeks. This unit gives motorists feedback on the speed at which they are driving on a digital reader board, encouraging them to obey the speed limit. Should you like to borrow the radar dolly, please request it by calling (425) 452-6457 or sign up on [BellevueWA.gov/RadarDolly](http://BellevueWA.gov/RadarDolly). Once we receive a request, City staff will contact you to make arrangements for both the drop-off and pick-up of the radar dolly at your home.

# MORE INFORMATION

Find out more about these recommendations in our **Residential Traffic Guidebook** or by visiting the Neighborhood Traffic Safety Services website.

**GUIDEBOOK:** [BellevueWA.gov/ResidentialTrafficGuidebook](http://BellevueWA.gov/ResidentialTrafficGuidebook)

**WEBSITE:** [BellevueWA.gov/NTSS](http://BellevueWA.gov/NTSS)

