

My Action Plan for 164th Ave NE south of NE 21st Pl

Are you feeling inspired to take action to address the traffic concerns on 164th Ave NE south of NE 21st Place? Here is a checklist to help you get started:

Talk to my neighbors and share the City's findings and recommendations.

List interested neighbors who want to help me with efforts:

Decide the educational programs we want to participate in:

Radar Dolly

Sign and Pledge Program

Contact City staff to set-up a training session and get materials.

Notes:

More info

Find out more about these recommendations on the City of Bellevue website and in our Residential Traffic Guidebook.

Website: <https://bellevuewa.gov/ntss>

Guidebook: <https://bellevuewa.gov/residentialtrafficguidebook>



TRAFFIC ACTION PLAN



BELLEVUE NEIGHBORHOOD TRAFFIC SAFETY SERVICES

2017-001 164th Ave NE south of NE 21st Pl

August 30, 2017



Subject: Speeding Concerns on 164th Ave NE

Dear

Thank you for contacting Neighborhood Traffic Safety Services and letting us know your concerns with vehicle speeds and cut through traffic in your neighborhood. We have completed a field review and data analysis and compiled this information, as well as our recommendations, into this Traffic Action Plan.

What we found:

- **Data Collected**—On 164th Ave NE the posted speed limit is 25 mph, and 20 mph in school zones. Traffic studies conducted in February 2017, on 164th Ave NE south of NE 21st Pl recorded 85% of motorists traveling at or below 30 mph, with average speeds recorded at approximately 26 mph. These speeds are similar to those recorded in past speed studies. On an average mid-week school day 7061 vehicles are using 164th Ave NE.
- **Collisions**—A three-year collision study was also conducted along 164th Ave NE between Northup Way and NE 24th Street. In the 3 years over this half a mile segment 8 collisions occurred. Seven were vehicle collisions and one collision involved a bicyclist.
- **Roadway Characteristics**—164th Ave NE is a collector arterial roadway serving an area of Northeast Bellevue with Sherwood Forest and Ardmore Elementary Schools and Interlake High School. 164th Ave NE is approximately 36 ft wide with sidewalks on at least one side of the street. The roadway is visually narrowed with white shoulder striping on either side that also limits on-street parking south of NE 24th Street. There is existing school zone signing and a school crosswalk at Sherwood Forest Elementary School with a median island that serves as a pedestrian refuge area as well as traffic calming.

Our recommendations based on field reviews, data collection, and engineering analysis:

- **Education and Encouragement**—To address those motorists choosing to drive faster than the posted speed limit, we encourage you and your neighbors to participate in one of our education programs as described on page 3 of this report. One of the options that would work well for the situation you've described is to borrow a radar dolly. The radar dolly displays a vehicle's speed on a reader board. The radar dolly has been effective in decreasing vehicle speeds in many areas of Bellevue by encouraging motorists to reduce their speed. We encourage you to fill out the radar dolly request form. Once we receive this form from you, City staff will contact you to make arrangements for both the drop-off and pick-up of the radar dolly at your home.
- **Enforcement**—We have forwarded a copy of the speed studies to our Police Traffic Unit for review and enforcement activities. You are also welcome to request enforcement by calling (425) 577-5656 or by filling out and submitting a request at the following link: <https://bellevuewa.gov/tsr>.
- **Roadway Modifications**—In the next few weeks, 20 mph advisory speed limit signs will be installed to supplement the existing curve warning signs on 164th Ave NE between Northup Way and NE 24th Street. Next year the crosswalk between Interlake High School and Sherwood Forest Elementary School will be modified to include rectangular rapid flashing beacons, similar to those installed on NE 24th Street.



Other traffic calming measures involve stationary radar signs which direct a driver's attention to the posted speed limit and digitally displays the speed of the driver's vehicle on a large message board. This traffic calming measure has been shown to reduce vehicle speeds by as much as 6-8 mph. On 164th Ave NE between Northrup Way and NE 24th Street, we analyzed the site and added it to our candidate list of potential stationary radar signs in the future.

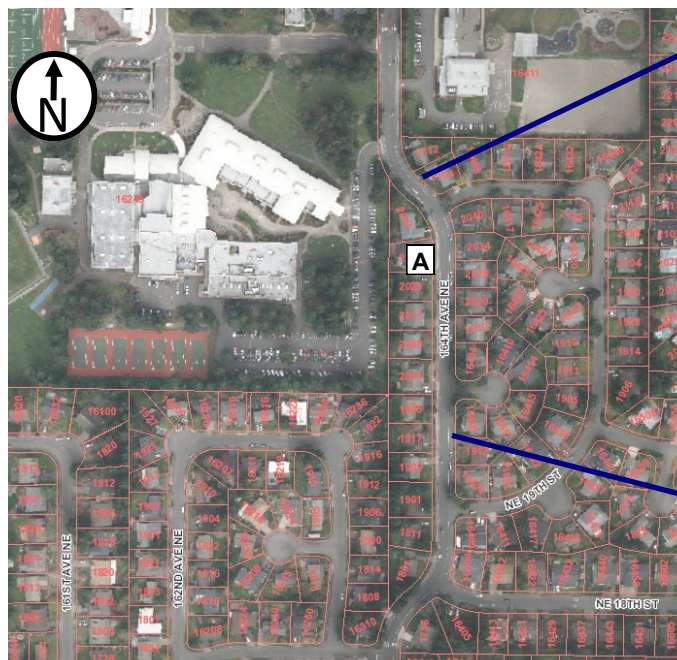
We are hopeful that a combination of these efforts will heighten motorist's attention to the posted speed limit and pedestrians in the area.

In the future, the City's Bicycle Rapid Implementation Program is proposing bike lanes along 164th Ave NE. The design and implementation of the new striping configuration is tentatively scheduled for the 2019-2020 biennium, though this scheduling is subject to change. The new striping configuration will have further traffic calming effects on 164th Ave NE. For more information about this plan, contact Andreas Pillar, Assistant Planner, at APillar@bellevuewa.gov or at (425) 452-2931.

Again, thank you for sharing your concerns with us about the speeding vehicles on 164th Ave NE. We look forward to working with you and your neighbors on the education programs suggested to address your traffic concerns. Please feel free to contact me at RAcel@bellevuewa.gov or at (425) 452-6133 to participate in any of the education programs described in this Traffic Action Plan.

Sincerely,

Reka Aczel, Transportation Engineer



164th Ave NE facing South.



164th Ave NE facing North.

Summary of Findings

Date	Location	Mid-Week Average Daily Traffic [^]	85th% Speeds*		Average Speeds	
			Northbound	Southbound	Northbound	Southbound
2/12—2/18	A 164th Ave south of NE 21st Pl	7061	30	29	26	25

[^]Mid-Week Average includes data between Tuesday and Thursday ^{*}85% of vehicles traveling at or below this speed



Customized Traffic Action Plan for 164th Ave NE south of NE 21st Pl

- Educate the Community**
- Enhance Neighborhood Identity**
- Reduce Excessive Vehicle Speeds**

Education, Encouragement, and Enforcement

By educating the community and encouraging safe driving, we can begin to change driver behavior and reduce vehicle speeds.

Radar Dolly



You can borrow and place a radar dolly on your street for up to two weeks. This unit gives motorists feedback on the speed at which they are driving, encouraging them to obey the speed limit. Should you like to borrow the radar dolly, please request it by calling (425) 452-6457 or sign up on <https://bellevuewa.gov/radardolly>.



Police Enforcement



If you would like to request enforcement, please do so by calling (425) 577-5656. You can also submit a Traffic Service Request at <https://bellevuewa.gov/tsr>. Please be specific about the location and times of your concern. The more information you can provide to Police, the better the chance they will be able to address your concern.

Sign and Pledge Program



This program involves lending communities portable signs that encourage motorists to respect the neighborhood, drive responsibly, and drive 25 mph. The signs are moved by community volunteers from place to place throughout the neighborhood every few days. The second part of the program is a neighborhood pace car program. Residents who pledge to drive responsibly and drive the speed limit on all neighborhood streets receive magnetic bumper stickers or window clings to place on their vehicles. As these motorists drive 25 mph on residential streets, they set the pace for drivers behind them.

