

My Action Plan for SE 56th St east of 126th Ave SE

Are you feeling inspired to take action to address the traffic concerns on SE 56th St east of 126th Ave SE? Here is a checklist to help you get started:

- Talk to my neighbors and share the City's findings and recommendations
- List interested neighbors who want to help me with efforts:

- Decide the educational programs we want to participate in:
 - Neighborhood Speed Watch
 - Radar Dolly
 - Sign and Pledge Program
- Contact City staff to set-up a training session and get materials

Notes:

Find out more about these recommendations in our **Residential Traffic Guidebook** or by logging on to **Streets are for Everyone (SAFE)**—Neighborhood Traffic Safety Services' blog.

More info

Blog: <http://bellevuentss.wordpress.com>

Guidebook: http://www.bellevuewa.gov/pdf/Transportation/Guidebook_Web.pdf



TRAFFIC ACTION PLAN



2016-027 SE 56th St east of 126th Ave SE

Subject: Speeding Concerns on SE 56th St east of 126th Ave SE

Thank you for contacting Neighborhood Traffic Safety Services and letting us know your concerns with vehicle speeds and cut through traffic in your neighborhood. We have completed a field review and data analysis and compiled this information, as well as our recommendations, into this Traffic Action Plan.

What we found:

- **Data Collected**—Traffic studies conducted in 2016 on SE 56th St recorded 85% of motorists traveling at or below 29 mph, with average speeds recorded at approximately 25 mph. These speeds are similar to those recorded in past speed studies. On an average mid-week school day, approximately 1,200 vehicles are using SE 56th St.
- **Collisions**—A three-year collision study was also conducted along SE 20th St and there were no reported crashes.
- **Roadway Characteristics**—SE 56th St is a main roadway serving an area of Newport with around 600 homes and Jing Mei Elementary, which has over 400 elementary and preschool students. It is approximately 30' wide with sidewalk on the south side of the street, except in front of the elementary school which has angled parking. The roadway is visually narrowed with white shoulder striping on either side that also limits on-street parking. There is existing school zone signing, as well as a raised crosswalk at 128th Ave SE.

Our recommendations based on field reviews, data collection, and engineering analysis:

- **Education and Encouragement**—Resident-led education and encouragement campaigns can be effective at reducing traffic speeds especially in neighborhoods, such as yours, with an active community club. We would encourage you to participate in some of our education programs available for residents' participation, which are detailed inside this report, as well as to share your concerns with other residents in your community, as well as with the Newport Hills Community Club Board of Directors. We will be sharing this information with Jing Mei Elementary School administration and encouraging them to participate in traffic safety education campaigns with their students and parents, as well.
- **School Walk Route Improvements**—Our investigation indicates that because the majority of motorists continue to drive the street appropriately, traffic calming measures, such as speed humps, are not warranted at this time. However, our review indicates school walk route improvements would be an appropriate traffic safety improvement for your street if Jing Mei Elementary School remains permanently in that location. During the next few years, the Bellevue School District will make decisions on what school facility will permanently use the SE 56th St site. When we know more, we'll investigate appropriate school walk route improvements appropriate for the use as resources become available.

Again, thank you for sharing your concerns with us. We look forward to working with you and your neighbors on the education programs suggested to address your traffic concerns. Please feel free to contact me at lglas@bellevuewa.gov or 425-452-2841 to participate in any of the education programs described in this Traffic Action Plan.

Sincerely,

Linda Glas, P.E.

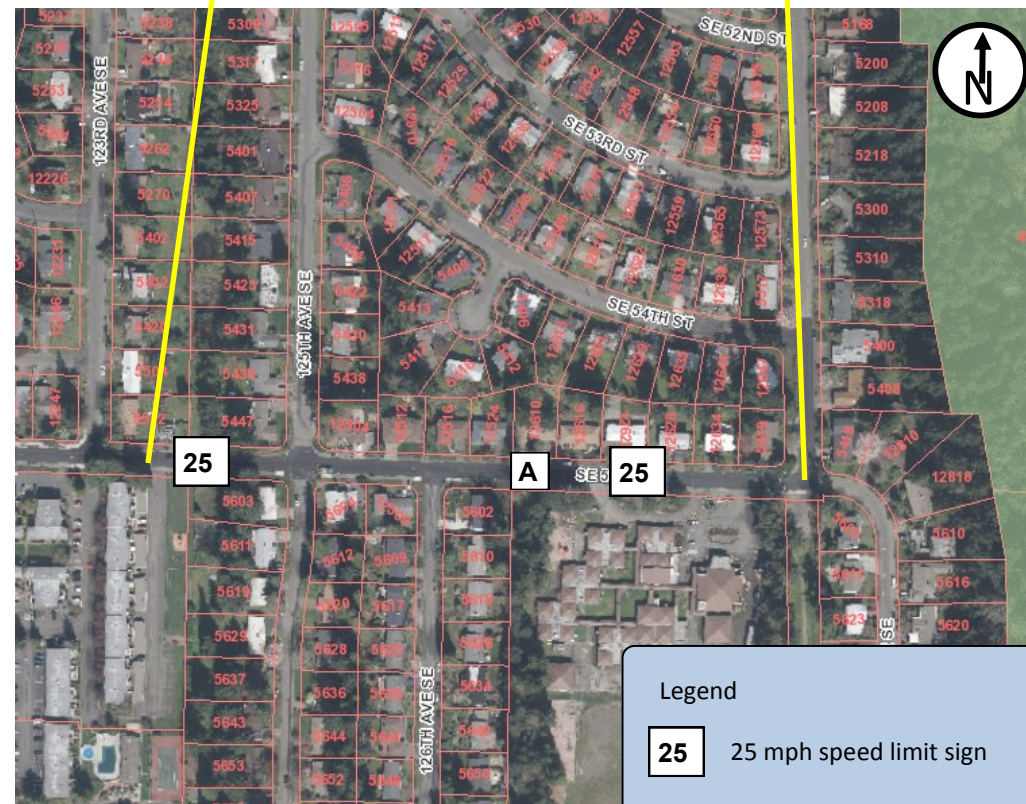




SE 56th St facing east



SE 56th St facing west



Legend
 25 25 mph speed limit sign

Summary of Findings

Date	Location	Mid-Week Average Daily Traffic^	85th% Speeds*		Average Speeds	
			Eastbound	Westbound	Eastbound	Westbound
9/20-9/26	A SE 56th St	1,292	28	29	23	25

^Mid-Week Average includes data between Tuesday and Thursday *85% of vehicles traveling at or below this speed



Customized Traffic Action Plan for SE 56th St east of 126th Ave SE

Education, Encouragement, and Enforcement

By educating the community and encouraging safe driving, we can begin to change driver behavior and reduce vehicle speeds.

- Educate the Community
- Enhance Neighborhood Identity
- Reduce Excessive Vehicle Speeds

Neighborhood Speed Watch

Using a borrowed radar unit, you record information about vehicles you observe traveling at or above 30 mph. NTSS staff then locate the registered owners of the vehicles and send a letter to them asking for their cooperation in reducing their speed. A partner to assist you with the data collection is recommended.

Radar Dolly

You can borrow and place a radar dolly on your street for up to two weeks. This unit gives motorists feedback on the speed at which they are driving, encouraging them to obey the speed limit. Should you like to borrow the radar dolly, please request it by calling (425) 452-6457 or sign up on www.bellevuewa.gov/radardolly.htm.

Sign and Pledge Program

This program involves lending communities portable signs that encourage motorists to respect the neighborhood, drive responsibly, and drive 25 mph. The signs are moved by community volunteers from place to place throughout the neighborhood every few days. The second part of the program is a neighborhood pace car program. Residents who pledge to drive responsibly and drive the speed limit on all neighborhood streets receive magnetic bumper stickers or window clings to place on their vehicles. As these motorists drive 25 mph on residential streets, they set the pace for drivers behind them.

